

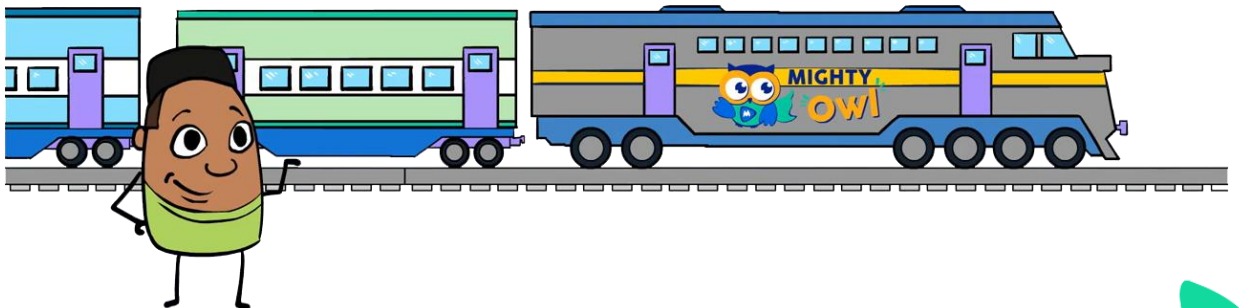
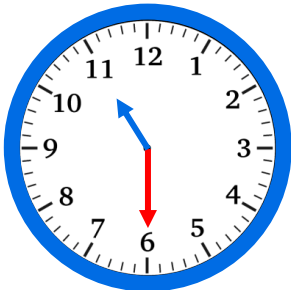
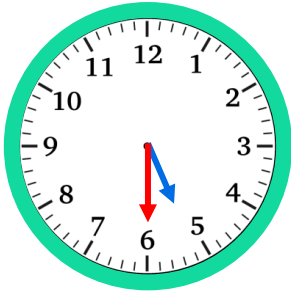
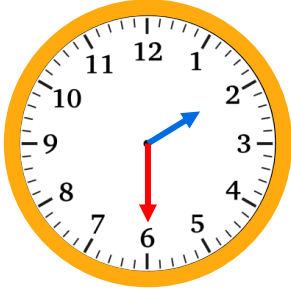


Name :

Date :

Telling time to the half hour: analog and digital clocks

Look at the time on the analog clock. Then, circle the matching time on the digital clock.

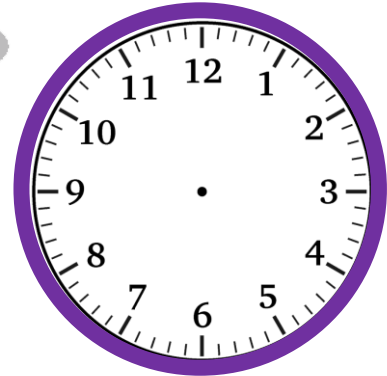
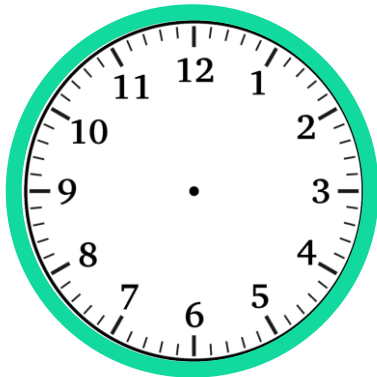
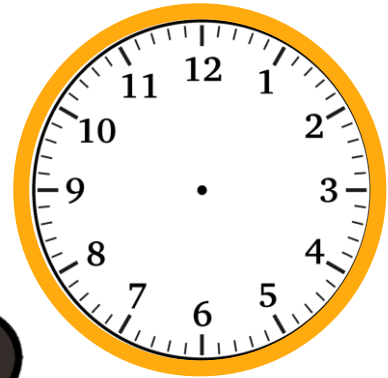
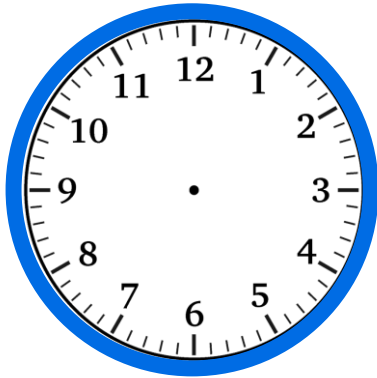


Visit us for much more at mightyowl.com



Telling time to the half hour: analog and digital clocks

Look at the time on the digital clock. Then, draw the hands on the analog clock to match the time.



Visit us for much more at mightyowl.com