

# How your body works: the most incredible machine



## Build a model of a pumping heart

### Objective

To construct a model demonstrating how blood is pumped into and out of the heart

### Materials



a mason jar or glass



1 small water balloon



1 regular balloon



2 rubber bands



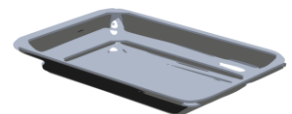
2 plastic straws



water



red food coloring



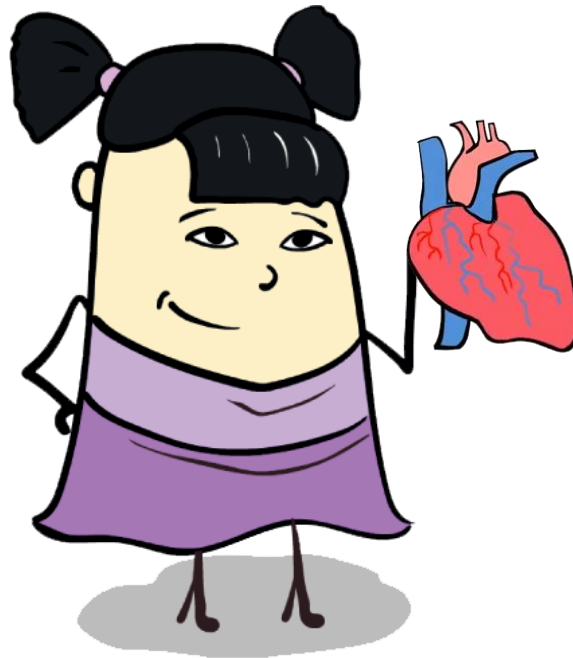
a tray to catch any messes

Visit us for much more at [mightyowl.com](http://mightyowl.com)

# How your body works: the most incredible machine

## Instructions

1. Fill the mason jar approximately  $\frac{1}{2}$ - $\frac{2}{3}$  with water, add the red food coloring.
2. Cut the end off of the regular sized balloon and secure it tightly over the top of your jar/glass using a rubber band.
3. Cut 2 small holes in the balloon for the straws to fit through, but be careful not to make the holes too big or air will get in and your “heart” won’t pump properly.
4. Attach the small water balloon to the top of one of the straws and secure it with the other rubber band.
5. Place both straws through the holes into the jar.
6. Place your jar on the tray to catch any excess “blood.”
7. Gently press the top of the balloon and watch as “blood” is pumped out of the “heart.”



Visit us for much more at [mightyowl.com](https://mightyowl.com)