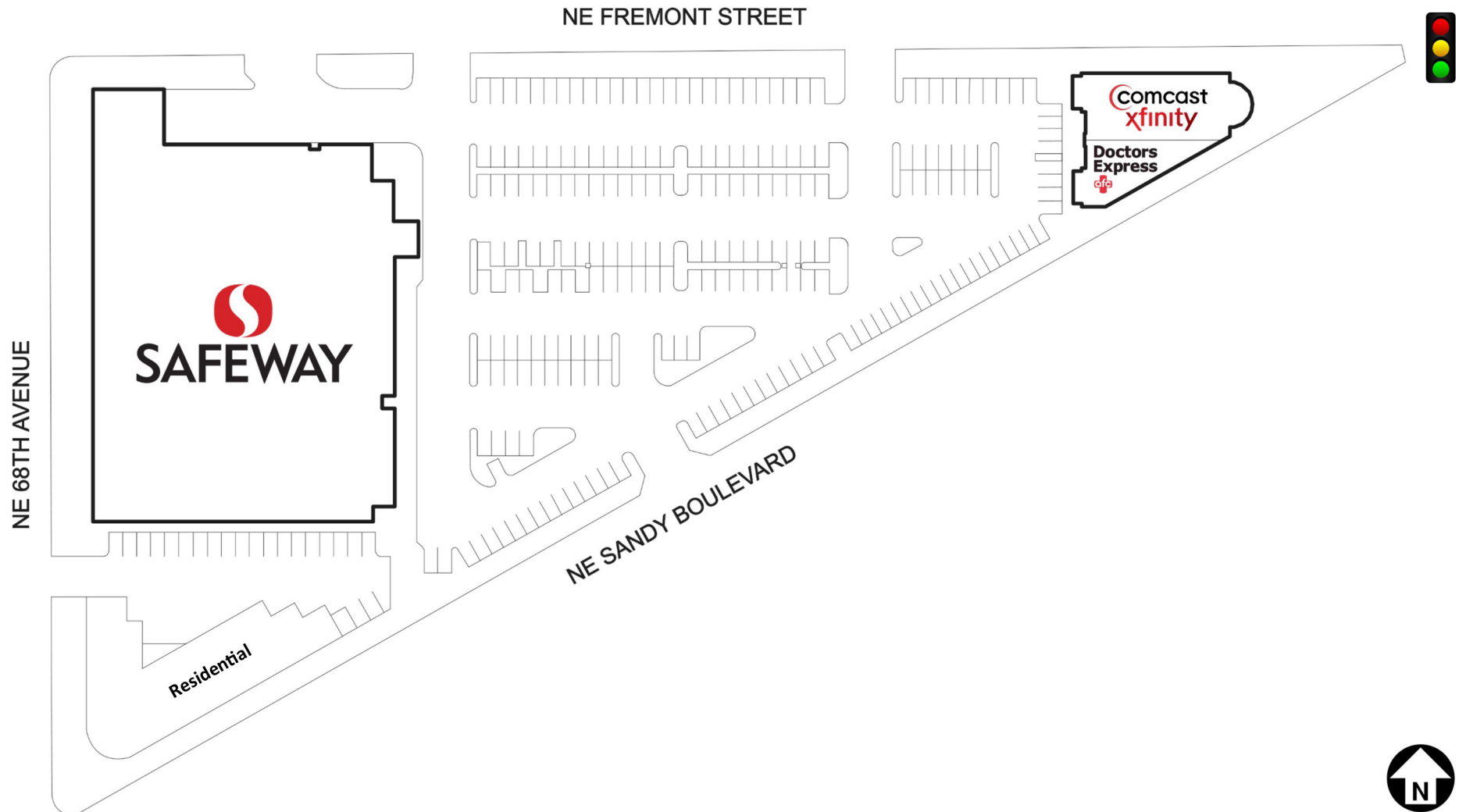


# Rose City Center

6819 NE Sandy Boulevard  
Portland, OR 97213



## Leasing Contact

**John Wynton** 510.368.5465 | 888.888.ROIC (7642) | [jwynton@roireit.net](mailto:jwynton@roireit.net) | [roireit.net](http://roireit.net)

Note: This site plan indicates the general layout of the shopping center and is not a warranty, representation or agreement on the part of the landlord that the shopping center will be exactly as depicted

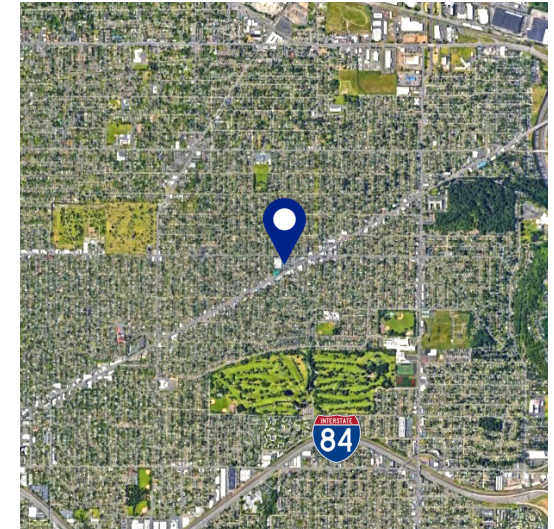
# Rose City Center

6819 NE Sandy Boulevard  
Portland, OR 97213



## Property Description

Rose City Center is a 60,680 square foot community center anchored by Safeway. The five-mile demographics supporting the property are strong with a population of 420,543 and an average household income of \$109,523.



## Property Overview

Total Number of Units: 3  
Total Square Footage: 60,680

## Major Tenants

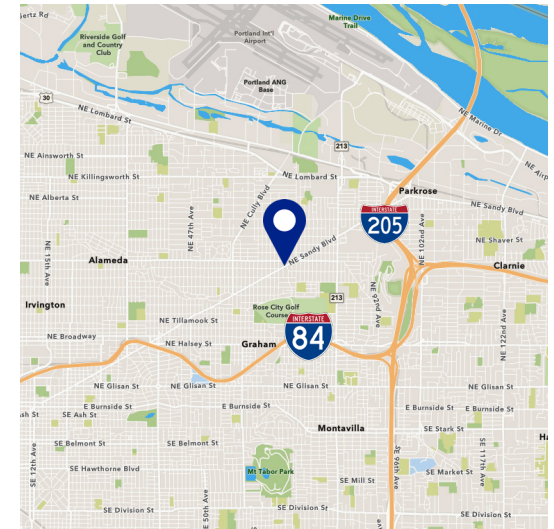
Safeway Supermarket

## Current Availability

100% Leased

## 2022 Demographics

	3-mile	5-mile
Population	162,027	420,543
Housing Units	74,418	202,700
Average Household Income	\$119,206	\$109,523



## Leasing Contact

**John Wynton** 510.368.5465 | 888.888.ROIC (7642) | [jwynton@roireit.net](mailto:jwynton@roireit.net) | [roireit.net](http://roireit.net)

All information contained herein was obtained from sources deemed reliable. No guarantee is made with respect to accuracy. Specifications subject to change without notice.