

{rewind}

REWIND / RIAVVOLGERE

REWIND is a reflection on time, the value of lived experiences and the importance of memory.

Rewinding the tape of an audio cassette.

Rewinding by pressing the button of a VCR as if it were a time machine to relive an image, a sound.

This is how the memory of time, recollection and vanished objects form a powerful imagery that becomes a tool for creativity in the present.

The collection pays tribute to the 90's: under the watchful eye of the present, iconic forms of Italian culture and Made in Italy have been re-interpreted.

REWINDEYEWEAR.COM

BACK TO THE FUTURE
CASUAL LOOPS
CHAOS THEORY
GRAVITY
HAPPY BIRTHDAY
SENSITIVE
SLIDING DOORS
SLOW MOTION
THE BUTTERFLY EFFECT
TIMELINE
INTERSTELLAR

LOST IN SPACE
MEMENTO
STOP TIME
TIME EFFECT

COUNTDOWN
DEJA' VU
DOUBLE LIFE
LOOPER

{ }

BACK TO THE FUTURE

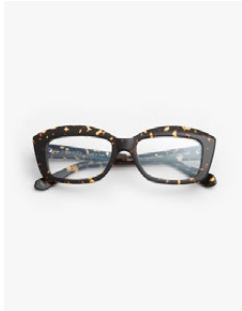
51-17-140

Soft features in a squared shape, emphasized by a prominent eyelash. The shape recalls the classics of the 1990s but projected into an ever-moving future. The colors are designed to emphasize the profile that frames the gaze with authority.





C01 / BLACK



C05 / DARK SPOTTED TORTOISE



C29 / COLORFUL BLUE TORTOISE



C35 / COLORFUL CAMOUFLAGE TORTOISE



C36 / OPALESCENT PEARL WHITE



C37 / BLUE PEARL



C38 / CHERRY RED PEARL



CASUAL LOOPS

52-16-140

Strictly feminine shape that will embrace your gaze. The small triangle on the sides, matted with laser, moves the shape and creates different layers of surface. The faceted worked hood plays with color transparencies for a seductive effect. Comfort and elegance are the words that immediately come to mind when wearing it.





C01 / BLACK



C02 / VINTAGE TORTOISE



C07 / GREEN TRANSPARENT



C12 / LIGHT PINK TRANSPARENT



C20 / NAVY BLUE TRANSPARENT



C23 / MARSALA RED TRANSPARENT



C44 / BLACK TORTOISE WITH PINK SPOTS



C45 / BROWN TORT. WITH BLUE/GOLD PEARL



CHAOS THEORY

51-17-140

An important eyeglass born to emphasize the gaze.
Love it or hate it. Narrow profiles that explode into the
well-pronounced snouts that exude character and enhance
colors by creating different thicknesses and profiles.





C01 / BLACK



C07 / GREEN TRANSPARENT



C18 / ORANGE SPOTTED TORTOISE



C24 / BUTTER WHITE PASTEL



C25 / PURPLE TRANSPARENT



C26 / LIGHT BLUE PASTEL



C27 / PINK PASTEL



C28 / TORTOISE WITH BLACK TOP



GRAVITY

51-19-140

This model interprets the design of the oval shape according to a feminine point of view; made with balanced and gentle proportions; it is developed in depth following the theme of glossy, transparent, pastel color, along with new solid colors, together with classic black and havana.





C01 / BLACK



C07 / GREEN TRANSPARENT



C12 / LIGHT PINK TRANSPARENT



C17 / ORANGE TRANSPARENT



C18 / ORANGE SPOTTED TORTOISE



C19 / CHERRY RED TRANSPARENT



C20 / NAVY BLUE TRANSPARENT



C21 / LIGHT BLUE TRANSPARENT



C22 / ACID YELLOW TRANSPARENT



C24 / BUTTER WHITE PASTEL



C37 / PEARL BLUE



C24 / PEARL MARSALA RED



C24 / OPALESCENT PEARL WHITE



HAPPY BIRTHDAY

53-15-140

Cat-eye silhouette, harmonious in its proportions, delicate in its design, and sophisticated in its shades, making this classic feminine design one of the all-time favorite shapes.

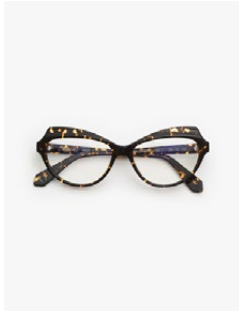




C01 / BLACK



C02 / VINTAGE TORTOISE



C05 / DARK SPOTTED TORTOISE



C07 / GREEN TRANSPARENT



C12 / LIGHT PINK TRANSPARENT



C14 / TURQUOISE BLUE TRANSPARENT



C19 / CHERRY RED TRANSPARENT



C20 / NAVY BLUE TRANSPARENT



SENSITIVE

51-17-140

Slightly rectangular design for this shape that unexpectedly softens with a smooth and rounded stroke, and warms up with a play of light suggested by the different processes of the glasses.





C01 / BLACK



C02 / VINTAGE TORTOISE



C05 / DARK SPOTTED TORTOISE



C07 / GREEN TRANSPARENT



C08 / DARK BROWN TRANSPARENT



C09 / BLUE TRANSPARENT (out of stock)



C12 / LIGHT PINK TRANSPARENT



C17 / ORANGE TRANSPARENT



C20 / NAVY BLUE TRANSPARENT



C24 / BUTTER WHITE PASTEL



C25 / PURPLE TRANSPARENT



C37 / BLUE PEARL



SLIDING DOORS

52-18-140

Feminine and sexy, this model reinterprets the concept of an easy-to-wear shape that is ignited with both glamorous content and simple, understated elegance, defined by colors interpreting it to perfection.





C01 / BLACK



C05 / DARK SPOTTED TORTOISE



C12 / LIGHT PINK CRYSTAL



C18 / ORANGE SPOTTED TORTOISE



C20 / NAVY BLUE TRANSPARENT



C23 / MARSALA RED TRANSPARENT



C07 / GREEN TRANSPARENT



C18 / PURPLE TRANSPARENT



SLOW MOTION

53-15-140

Ultrafeminine and elegant, with bold hues and detailed finish; slightly oversized, with easy-to-wear proportions: it won't go unnoticed on your face.





C01 / BLACK



C02 / VINTAGE TORTOISE



C04 / SPOTTED TORTOISE



C09 / BLUE TRANSPARENT



C13 / LIGHT BROWN TRANSPARENT



C15 / SPOTTED TORTOISE WITH BLACK TOP



C16 / GREY TORTOISE WITH DARK RED TOP



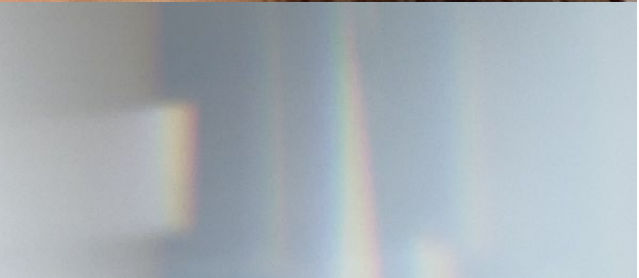
C40 / METALLIC RED



C41 / METALLIC PETROL GREEN



C42 / WHITE PEARL



THE BUTTERFLY EFFECT

54-16-140

Revisiting a classic feminine shape, with pronounced accents at the top, emphasizing the look and drawing the eye in a bold and elegant way.





C01 / BLACK



C06 / DARK TORTOISE



C13 / LIGHT BROWN TRANSPARENT



C15 / SPOTTED TORTOISE WITH BLACK TOP



C16 / GREY TORTOISE WITH DARK RED TOP

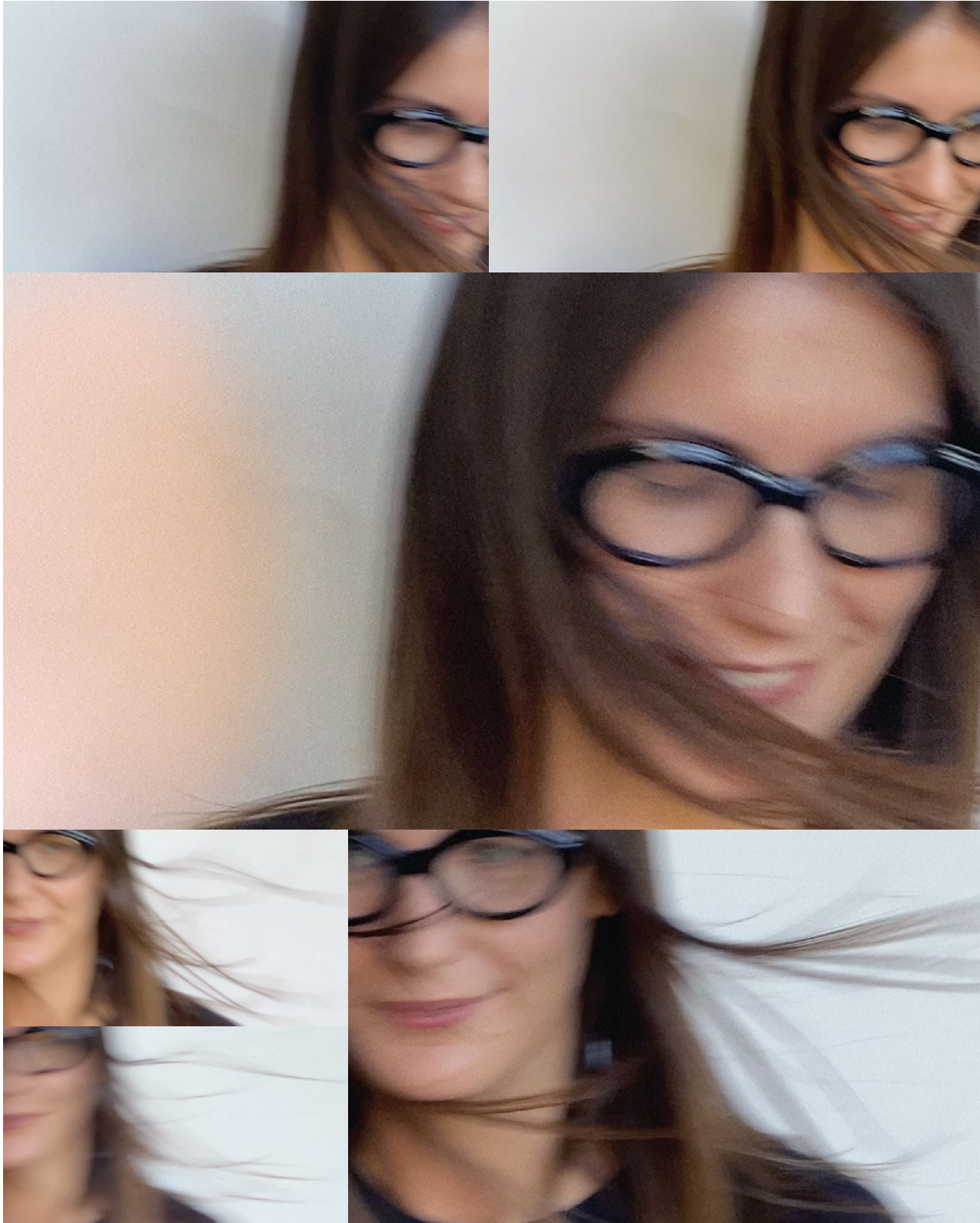


TIMELINE

50-19-140

Oval design by excellence. A thin line around the profile draws the eyewear creating plays of light and color. Different shades of color are imagined to catch every eye.





C01 / BLACK



C19 / CHERRY RED TRANSPARENT



C30 / WHITE PEARL WITH BLACK TOP



C31 / RED TORTOISE



C32 / PETROL GREEN TRANSPARENT



C34 / OPAL LIGHT ROSE WITH ROSE PEARL TOP



C33 / OPAL LIGHT ROSE WITH LIGHT BLUE PEARL TOP



INTERSTELLAR

51-18-140

This model will help you protect your eyes.

Its refined oval shape, enhanced by a small lamination, introduces the perfectly connected rod to give continuity.

The 5 colors offered go perfectly with every style and trend and never go out of fashion.





C46 - VINTAGE TORTOISE WITH DARK TORTOISE COMBO



C47 / BLACK + SPOTTED TORTOISE COMBO



C48 / GREEN+BROWN/PINK PEARL TORTOISE COMBO



C49 / BLUE + BROWN TORT. WITH BLUE/GOLD COMBO



C50 / MARSALA RED + DARK TORTOISE



LOST IN SPACE

52-19-145

A modern reinterpretation of a classic 1990s rectangular shape, enhanced in finishing and meaning by an elegant, bold, contemporary color palette.





C01 / BLACK



C05 / DARK SPOTTED TORTOISE



C07 / GREEN TRANSPARENT



C08 / DARK RED TRANSPARENT



C09 / BLUE TRANSPARENT



C11 / GREY TRANSPARENT



C22 / ACID YELLOW TRANSPARENT



C24 / BUTTER WHITE PASTEL



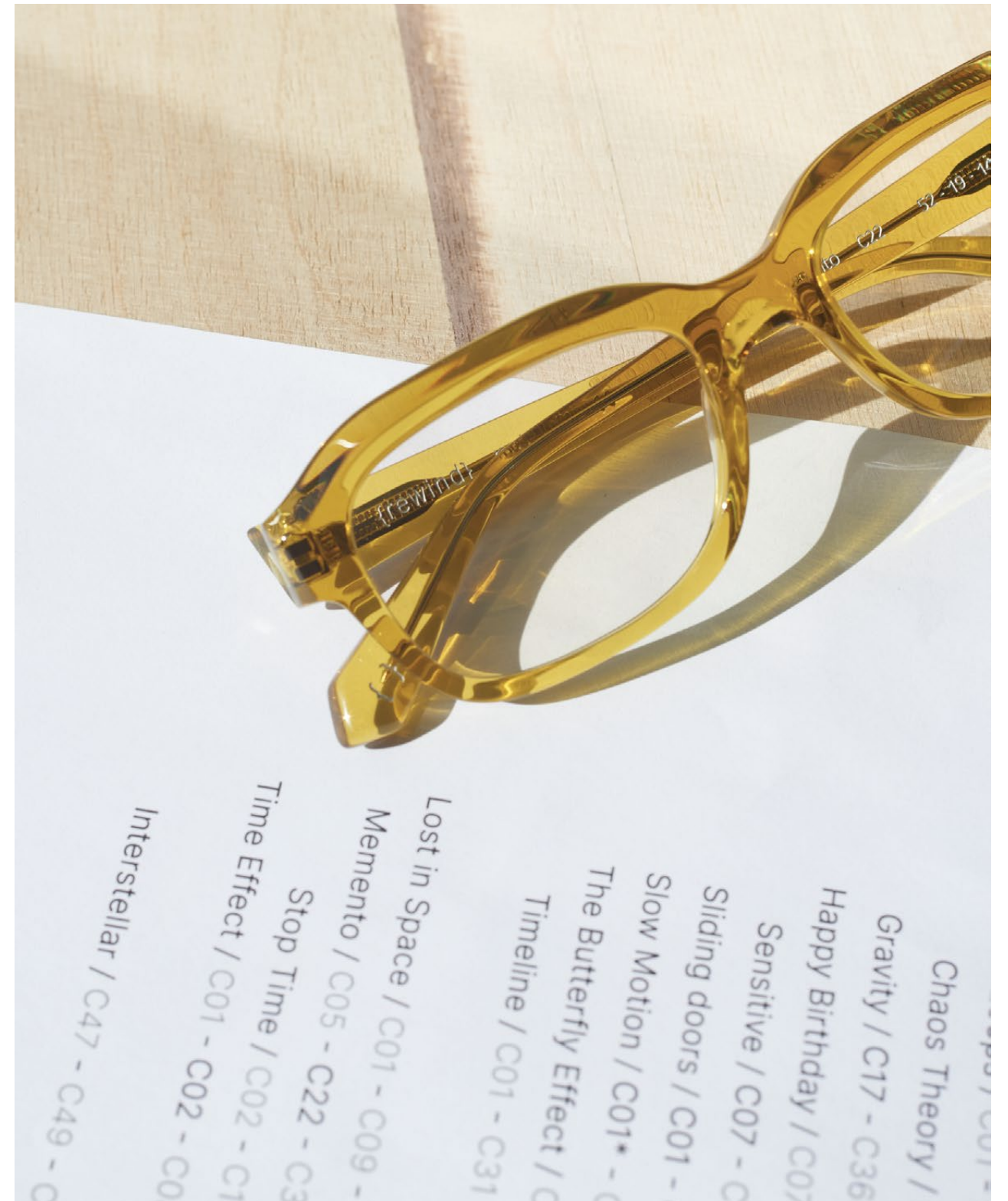
MEMENTO

52-19-145

Classic form, but not trivial. Researched in its simplicity.

Designed for those seeking comfort and elegance.

The colors are designed for both those who want quiet and those who like to be daring. It's designed for men, but also for women. Its style and value will not change over the years.





C01 / NERO



C01 / BLACK



C05 / DARK SPOTTED TORTOISE



C07 / GREEN TRANSPARENT



C11 / GREY TRANSPARENT



C22 / ACID YELLOW TRANSPARENT



C23 / MARSALA RED TRANSPARENT



C39 / BLACK TORTOISE WITH RED SPOTS



C43 / BLACK TORTOISE BLUE SPOTS



STOP TIME

52-21-145

Square silhouette, slightly oversized, that crosses time, with simplicity gives appeal to the face and easy portability, and enhances the content of a great and indispensable classic.





C01 / BLACK



C02 / VINTAGE TORTOISE



C05 / DARK SPOTTED TORTOISE



C07 / GREEN TRANSPARENT



C10 / CARAMEL TRANSPARENT



C11 / GREY TRANSPARENT



TIME EFFECT

52-16-140

Rectangular shape, with contained proportions even if accentuated in the profile, which dives into the '90s and re-emerges with a timeless charm and a little bit of boldness.





C01 / BLACK



C02 / DARK TORTOISE



C04 / SPOTTED TORTOISE



C08 / DARK RED TRANSPARENT



C13 / LIGHT BROWN TRANSPARENT



COUNTDOWN

52-18-140

The features of this model are well-defined and embellished with bold facets, matted by skilled hands. The colours are designed to be always up-to-date and to overcome the signs of time unscathed.





C01 / BLACK



C05 / DARK SPOTTED TORTOISE



C32 / PETROL GREEN TRANSPARENT



C37 / BLUE PEARL



C52 / OPAL LIGHT PINK



C55 / BROWN AND PINK TORTOISE



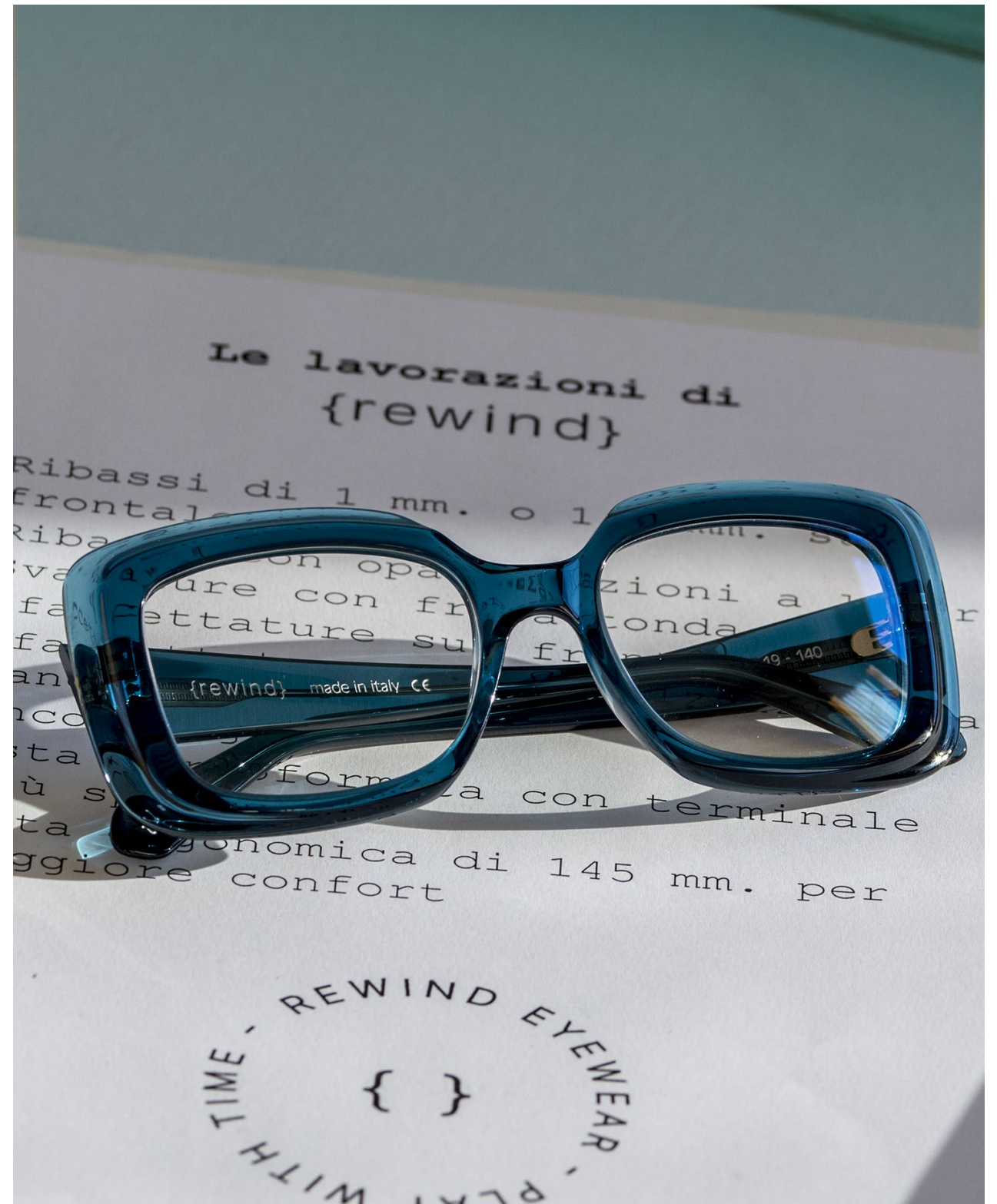
C56 / CRYSTAL SILVER GLITTER



DEJA' VU

51-19-140

This shape wants to express, in its simplicity, a confidence and strenght that endures over time, beyond the fashions and trends of the moment.





C20/ NAVY BLUE TRANSPARENT



C31 / RED TORTOISE



C07 / GREEN TRANSPARENT



C36 / OPALESCENT PEARL WHITE



C53 / GREY TRANSP.WITH BLACK NUANCES



C08 / DARK RED TRANSPARENT



C54 / DARK BLACK AND BLUE TORTOISE



DOUBLE LIFE

47-21-145

Round shape and voluminous profiles. A retro shape made modern by colors and matt finishes. They can add a touch of eccentricity or sophistication to a look, depending on the style and context in which they are worn.





C01 / BLACK



C28 / TORTOISE WITH BLACK TOP



C32 / PETROL GREEN TRANSPARENT



C45 / BROWN TORT. BLUE/GOLD PEARL



C61 / RED TRANSPARENT



C62 / TORTOISE WITH PEARL ROSE



C63 / COLOURFUL BLACK AND YELLOW



C64 / COLOURFUL BLACK AND RED



LOOPER

53-20-145

This model is massive and square, with a sturdy frame that catches the eye. The lenses are wide giving the face a bold and distinctive look. Sharp angles and bold lines, the shape has been reinterpreted in a modern way for a contemporary and fashionable look





C01 / BLACK



C05 / DARK SPOTTED TORTOISE



C57 / OPAL ICE/GREY TORTOISE TEMPLES



C58 / BLUE TORTOISE



C59 / GREEN TORTOISE



C60 / MARSALA RED TORTOISE



C06 / DARK TORTOISE



C07 / GREEN TRANSPARENT





REWINDEYEWEAR.COM

INFO@REWINDEYEWEAR.COM