



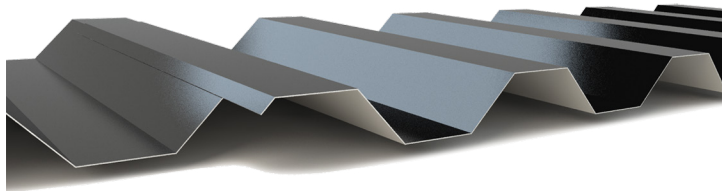
NRM-7000 PANELS • Industrial 7.2 Panel

NRM-7000 offers design flexibility in an architecturally attractive metal panel. This versatile 7.2 panel can be specified for a wide range of building envelope applications including roofs, walls, linear panels, walls and equipment screens.

NRM-7000 panels can be produced perforated and used for projects such as equipment and shade screens. Perforated panels are also excellent for interior acoustical applications as well. They are available factory roll-formed in a maximum panel length of 44' 0" and a minimum length of 4' 0".

FASTENERS

For roofing applications, use wood-type screws fastened on 36" centers. Other screw types are available applications over structural steel and steel decking.



TRIM

All flashing and trim shall be fabricated by Nu-Ray Metals or a qualified fabricator. Flashings for this panel shall be 20, 22, 24 or 26 gauge steel.

INSTALLATION

NRM-7000 panels are intended for use in architectural and structural roofing and siding. Substrates may include metal decking, purlins, rigid insulation and solid plywood. Minimum roof pitch is 3:12.

HANDLING

Vinyl masking is provided on all steel sheet to help protect materials where extra handling is expected.

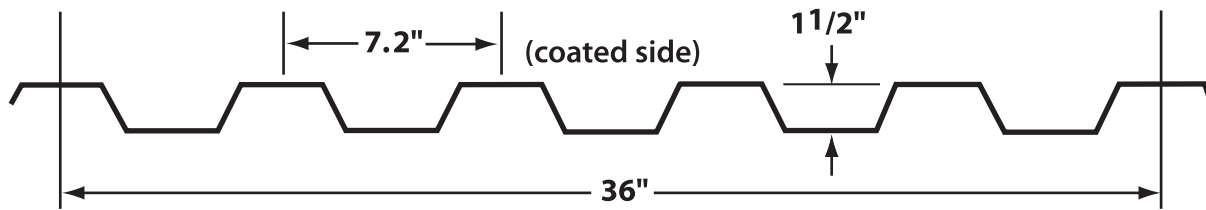
WARRANTY

A 40-year non-prorated finish warranty can be supplied covering finish performance.


Nu-Ray Metals
Steel Roofing & Siding Products

Nu-Ray Metal Products, Inc. 1234 37th Street NW Auburn, WA 98001
Tel. (800) 700-7228 Fax (253) 833-7268 Web NuRayMetals.com

NRM-7000 Exposed Fastener Panel



NRM-7000 FEATURES

- Great panel for architectural, commercial and industrial roof and wall applications
- Standard 7.2" span between major ribs
- Great load and span capacities
- Apply over open framing or solid substrates
- Export crating available
- Minimum 3:12 roof pitch
-

PANEL DEPTH : 1 1/2"

PANEL COVER WIDTH : 36"

PANEL LENGTHS: 5' 0" to 44' 0" standard

METAL OPTIONS

- 22 (special order) and 24 gauge G90 or AZ50 steel
- .032, .040 and .050 aluminum (special order)
- 16 oz. or 20 oz. natural copper (special order)

SURFACE OPTIONS

- Standard as shown in the cross-section above

FINISHES

- D2 Kynar 500® ULTRA-Cool™
- D2 Kynar 500® with Ocean Guard ULTRA-Cool™
- Zinalume Plus*
- Standard Kynar 500® ULTRA-Cool™

Kynar® and Kynar 500® are registered trademarks of Arkema Inc. used under sublicense by Nu-Ray Metal Products, Inc.

22 GAUGE PANELS x 36" WIDE

Gauge	Span	Condition	2' 0" Span	2' 6" Span	3' 0" Span	3' 6" Span	4' 0" Span	4' 6" Span	5' 0" Span
22	Single	L/240	1092	323	203	136	95	69	40
22	Double	L/240	2664	789	497	333	233	170	98
22	Triple	L/240	2087	618	389	260	183	133	77

24 GAUGE PANELS x 36" WIDE

Gauge	Span	Condition	2' 0" Span	2' 6" Span	3' 0" Span	3' 6" Span	4' 0" Span	4' 6" Span	5' 0" Span
24	Single	L/240	794	235	148	99	69	50	29
24	Double	L/240	1914	567	357	239	168	122	70
24	Triple	L/240	1499	444	279	187	131	95	55

All calculations for panel properties have been made in accordance with the 1996 edition of "Specification for Cold-Formed Steel Design Manual" published by the American Iron and Steel Institute. Material: FY = 40 KSI for steel panels minimum. All loads are in PSF. Minimum panel support bearing length = 3.00 in. Loads shown are limited by L/240 deflection.



(800) 700-7228

www.NuRayMetals.com

Questions? Contact our Technical Department at
info@nuraymetals.com