



Color: Moss Green

NRM-2200 PANELS • Mechanically Seamed

NRM-2200 panels combine structural panel performance and architectural panel aesthetics. A factory-applied sealant bead is an option for additional weather resistance. Maximum panel length is 44' from the factory and up to 200' when formed at the job site.

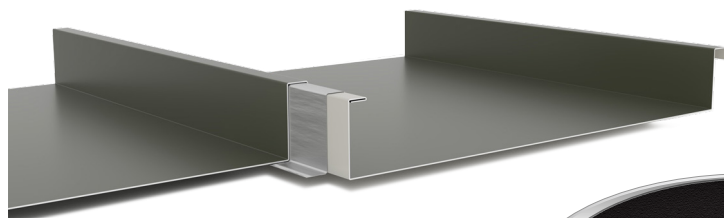
NRM-2200 panels feature a 2" leg height that requires mechanical field seaming after installation. The panel employs a concealed-fastener floating clip system that allows thermal expansion/contraction.

FASTENERS

For roofing applications, use wood-type screws fastened on 36" centers. Other screw types are available for applications over structural steel and steel decking.

TRIM

All flashing and trim shall be fabricated by Nu-Ray Metals or a qualified fabricator. Flashings for this panel shall be 26 or 24 gauge steel.



INSTALLATION

NRM-2200 panels are intended for use in architectural and structural roofing. Substrates may include 5/8" (min.) plywood, nailboard insulation or equivalent, with an underlayment of ice and water shield or 30# (min.) roofing felt applied horizontally from eave to ridge. Other substrates may include metal decking, purlins or rigid insulation in conjunction with bearing plates. A minimum of 1/2:12 pitch is required. Factory-injected seam sealant is required on pitches less than 2:12. Check with Nu-Ray Customer Service for further assistance with project details.

For coastal applications, NRM Coastal Guard panels can be used for a specialized finish warranty. Consult a local architect/engineer for compliance with local codes and conditions.

HANDLING

Vinyl masking is provided on all steel sheet to help protect materials where extra handling is expected.

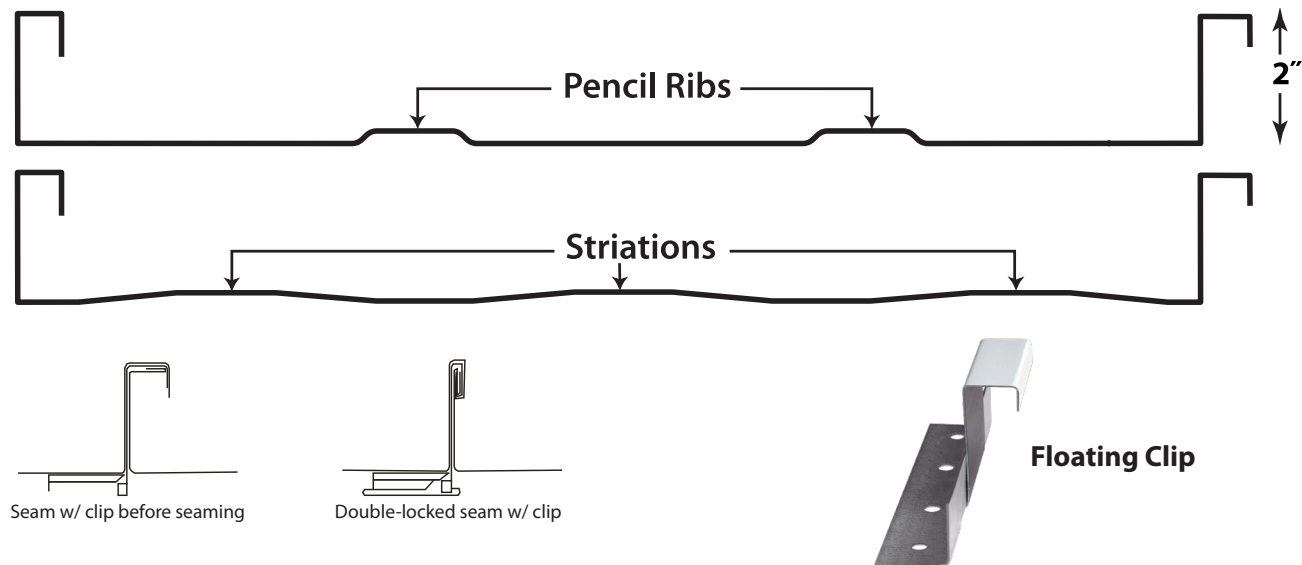
WARRANTY

A 40-year non-prorated finish warranty can be supplied covering finish performance.



Nu-Ray Metal Products, Inc. 1234 37th Street NW Auburn, WA 98001
Tel. (800) 700-7228 Fax (253) 833-7268 Web NuRayMetals.com

NRM-2200 Mechanically Seamed Panel



NRM-2200 FEATURES

- Great panel for commercial, industrial and architectural roof applications
- Factory-injected seam sealant available as an option
- Overall design provides great load and span capacities
- Apply over open framing or solid substrates
- On site forming available
- Minimum ½:12 roof pitch
- UL 580 Class 90 Rated and Listed

PANEL DEPTH : 2.00"

PANEL WIDTHS : 14", 16", 18" (14" and 18" standard)

PANEL LENGTHS: 5' 0" to 44' 0" standard; on-site roll forming available

METAL OPTIONS

- 22 (special order), 24 and 26 gauge G90 or AZ50 steel
- .032 and .040 aluminum (special order)
- 16 oz. or 20 oz. natural copper (special order)

SURFACE OPTIONS

- Smooth/flat
- Two Pencil Ribs
- Striations

FINISHES

- D2 Kynar 500® ULTRA-Cool™
- D2 Kynar 500® with Ocean Guard ULTRA-Cool™
- Zinalume Plus*
- Standard Kynar 500® ULTRA-Cool™

Kynar® and Kynar 500® are registered trademarks of Arkema Inc. used under sublicense by Nu-Ray Metal Products, Inc.

24 GAUGE PANELS x 16" WIDE

No. of Equal Spans	Condition	3' 0" Span	3' 6" Span	4' 0" Span	4' 6" Span
1	L/180	173	148	113	89
2	L/180	141	105	80	64
3	L/180	163	121	93	74

24 GAUGE PANELS x 18" WIDE

No. of Equal Spans	Condition	3' 0" Span	3' 6" Span	4' 0" Span	4' 6" Span
1	L/180	154	130	99	78
2	L/180	125	93	71	56
3	L/180	145	107	83	65

NOTE: When analyzing the double lock profile, multiply these live load values by a multiplier of 0.94.

All calculations for panel properties have been made in accordance with the 1996 edition of "Specification for Cold-Formed Steel Design Manual" published by the American Iron and Steel Institute. Material: FY = 40 KSI for steel panels minimum. All loads are in PSF. Minimum panel support bearing length = 3.00 in. Loads shown are limited by L/180 deflection.



(800) 700-7228

www.NuRayMetals.com

Questions? Contact our Technical Department at
info@nuraymetals.com