

Blueridge

Price List

Effective 11/1/2023

Order Information	13	Stationary, DF Straight	24
Specifications	14	Stationary, DF Curved	25
Terminology & Tips	16	Mobile, SF Straight	26
Shelf Counts & Spacing	18	Mobile, SF Curved	27
Stationary, SF Straight	22	Mobile, DF Straight	28
Stationary, SF Curved	23	Mobile, DF Curved	29



LIATfurniture.com

694 North Main Street · Troutman, NC 28166
TF 888 440 8205



Use this checklist to be sure you have all of the necessary information to place your order.

☐ **Catalog Number**

Use our build guides to create your catalog number.

☐ **Laminate Selection**

Standard Wilsonart or Formica. Please specify manufacturer, color, finish and model number.

☐ **PVC Edge Band**

See 7 for a complete list of standard LIAT PVC Edge Band options.

☐ **Metal Shelf Color** ***Metal shelf units only***

See page 8 for a complete list of standard LIAT PVC Edge Band options.

☐ **Accessories**

General Construction

Blueridge non-mobile shelving has a modular island/starter/adder/end design, which allows for easy reconfiguration. Blueridge mobile shelving is free standing only.

Sizes

Selected sizes are nominal and actual dimensions vary depending on the selected unit type. Adder units and End units have a width equal to the nominal width whereas Island and Starter units have a width that is 1" larger than the nominal width, creating a run of shelving that is the selected nominal width on centers.

Creep Factor

Due to variations in laminate thicknesses, there is a creep factor to the overall length of a shelving run where the actual length may be longer than expected. If there is a critical dimension that must be fit, it is the customer's responsibility to contact Project Management to notify LIAT of that situation.

Toe Kick

The toe kick is to be used on non-mobile shelving and is constructed of 1" thick particle board core with a vertical grade high pressure laminate on both sides, with a 3mm PVC band on two long edges. The toe kick is machined for recessed specialty cam lock connectors to engage metal inserts in the end & intermediate panels.

Modular Top

The modular top is to be used on non-mobile shelving and is constructed of 1" thick particle board core with a vertical grade high pressure laminate on both sides, with a 3mm PVC band on two long edges. The modular top is machined for specialty cam lock connectors to engage metal inserts in the end & intermediate panels.

Horizontal panel

The horizontal panel is to be used on mobile shelving and is constructed of 1" thick particle board core with a vertical grade high pressure laminate on both sides, with a 3mm PVC band on all edges. The horizontal panel is machined for metal inserts to engage with specialty cam lock connectors in the end & intermediate panels.

End and Intermediate Panel, Non-Mobile Shelving

The end and intermediate panels for non-mobile shelving are 1" thick particle board core with a vertical grade high pressure laminate on both sides, with a 3mm PVC band on two vertical edges and the top edge. The inside face(s) of the panels receive two rows of holes per face board to accept shelf pins, spaced 32mm apart on center. The panels are grooved to accept a 1/16" thick back panel unless otherwise noted. The panels are machined for metal inserts to engage with specialty cam lock connectors in the toe kicks and modular tops.

End and Intermediate Panel, Mobile Shelving

The end and intermediate panels for mobile shelving are 1" thick particle board core with a vertical grade high pressure laminate on both sides, with a 3mm PVC band on two vertical edges. Any mobile shelving unit over 36" in width will receive an intermediate panel. The inside face(s) of the panels receive two rows of holes per face board to accept shelf pins, spaced 32mm apart on center. The panels are grooved to accept a 1/16" thick back panel unless otherwise noted. The panels are machined for specialty cam lock connectors to engage metal inserts in the horizontal panels.

Back Panel

All double faced and single faced island units are two sheets of vertical grade high pressure laminate, glued back-to-back. Single faced perimeter shelving units are one sheet of vertical grade high pressure laminate glued to 1/8" MDF.

Adjustable Shelf (Book Case)

The adjustable shelves are constructed of 1" thick particle board core with a vertical grade high pressure laminate on both sides, with a 3mm PVC band on one long edges. The underside of the shelves are routed to accept shelf pins.

Picture Book Shelf

The adjustable shelves are constructed of 1" thick particle board core with a vertical grade high pressure laminate on both sides, with a 3mm PVC band on one long edges. The underside of the shelves are routed to accept shelf pins. The top of the shelf receives five evenly spaced black wire dividers which are inserted into 3/16" diameter holes. Shorter width shelves may receive less than five dividers due to space limitations.

Metal Shelf

The adjustable metal shell is constructed of 20 gauge steel and is 3/4" thick with the front and rear edges being square formed. The ends of the shelves are notched to accept shelf pins. The shelves are powder coated.

Fixed Shelf

All shelving units 60" and higher require a shelf to be attached to the end and/or intermediate panels by means of (2) L-shaped brackets and pan head wood screws that will align with the shelf pin holes on vertical panels.

Corner Fillers

The corner fillers are constructed of 1" thick particle board core with a vertical grade high pressure laminate on one side and a backing sheet on the back side. Solid hardwood cleats are provided for attachment to the shelving run and the wall.

NOTE: For a proper fit, corner fillers may require trimming on installation.

Top Fillers

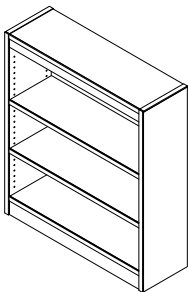
The top fillers are constructed of 1" thick particle board core with a vertical grade high pressure laminate on one side and a backing sheet on the back side, and receive a 3mm thick eased external band on one edge in the length dimension. Solid hardwood cleats are provided for attachment to the shelving run and the wall.

NOTE: For a proper fit, top fillers should be ordered oversized and require trimming on installation.

Face Fillers

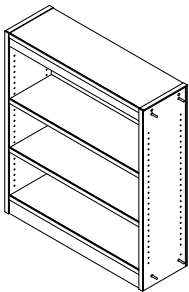
The face fillers are constructed of 1" thick particle board core with a vertical grade high pressure laminate on one side and a backing sheet on the back side. Solid hardwood cleats are provided for attachment to the shelving run and the wall.

NOTE: For a proper fit, face fillers should be ordered oversized and require trimming on installation.



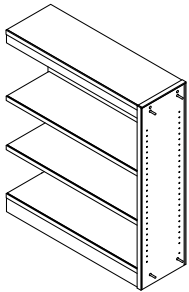
Island

Island units are stand-alone or free-standing, and come with two end panels.



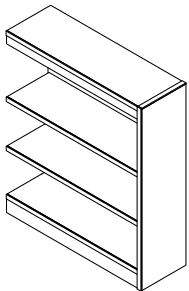
Starter

*Starter units act as a starting point for a run of shelving, and come with one end panel and one intermediate panel. **All starters must be ordered with an end.***



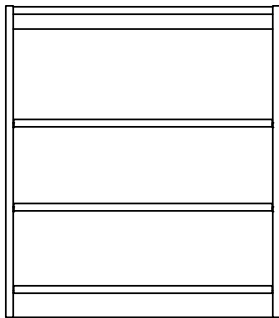
Adder

*Adder units act as an extension for a run of shelving units, and come with one intermediate panel. **All adders must be ordered with both a starter and an end unit. There is no limit to the amount of adders allowed in a given run.***

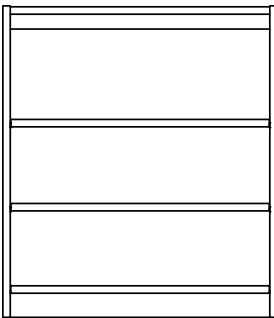


End

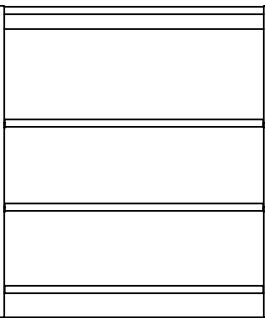
*End units act as an ending point for a run of shelving, and come with one end panel. **All ends must be ordered with a starter.***



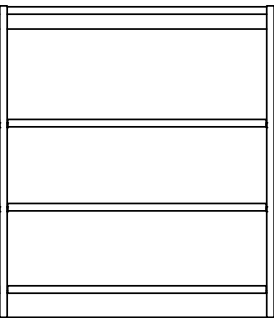
Island



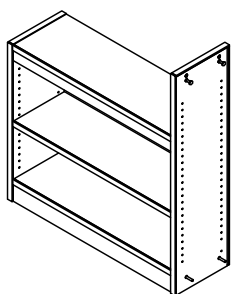
Starter



Adder

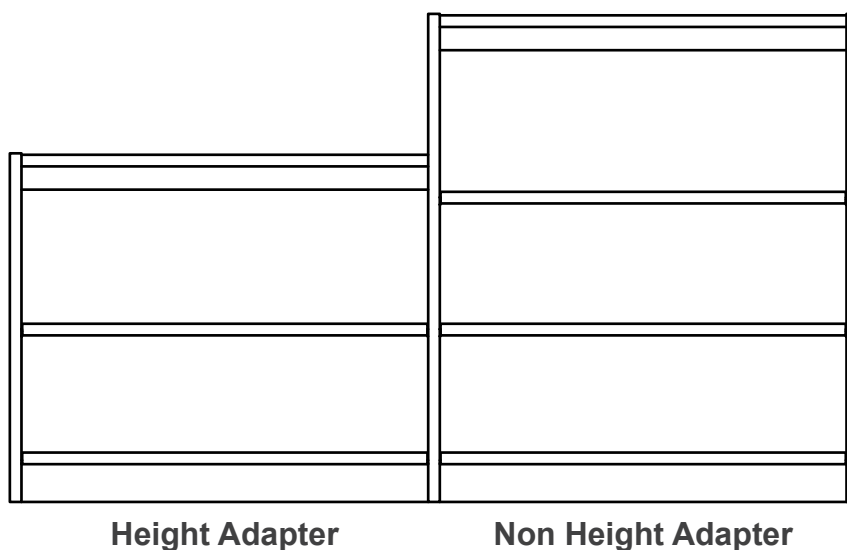


End



Height Adapter

Height adapter shelving units utilize an intermediate panel machined for different heights each side. The height adapter shelving unit is on the left side of the change in height. Only starters and adders can be height adapters.



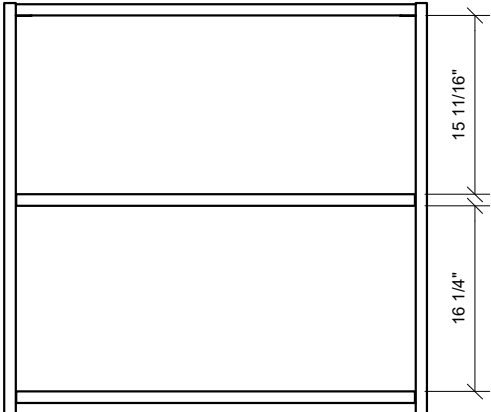
Height Adapter

Non Height Adapter

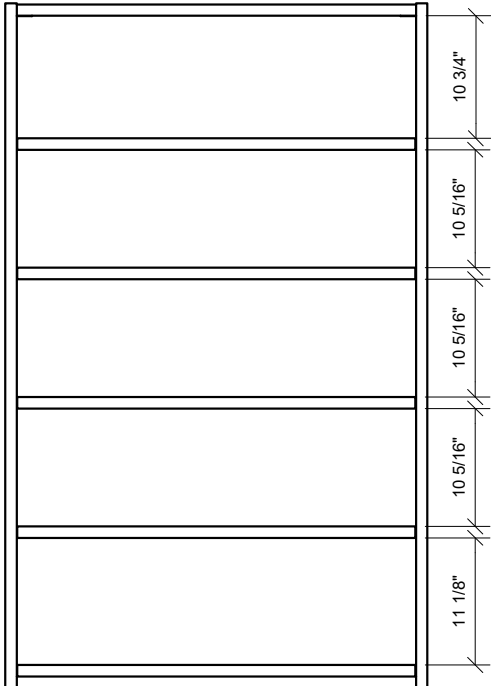
The following images are provided as a reference to show the spacing/details and number of shelves for each of our standard heights to help with the planning process.



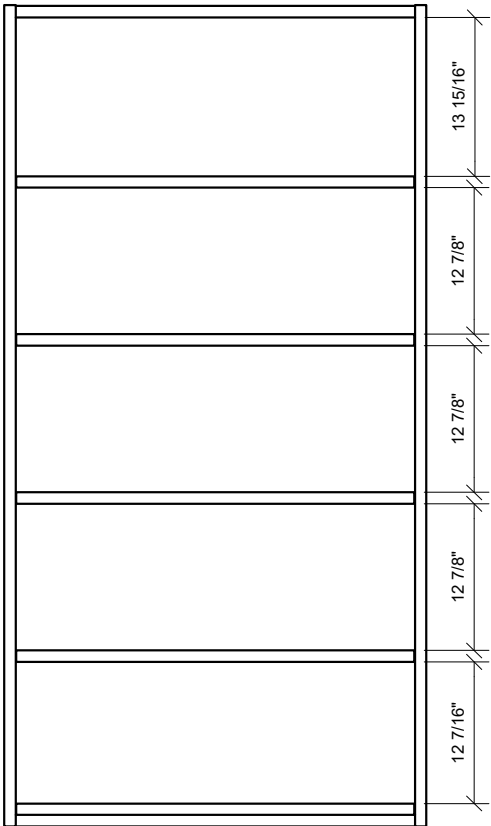
30" H Unit



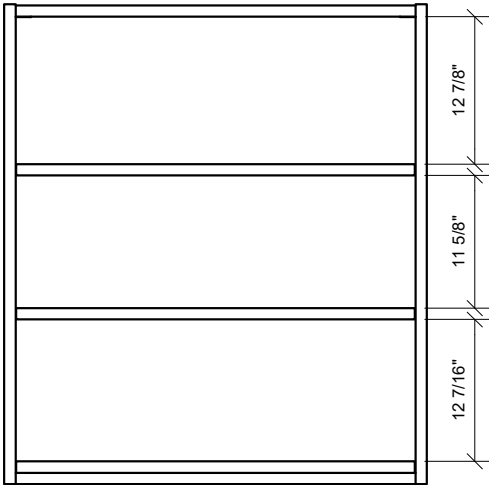
36" H Unit



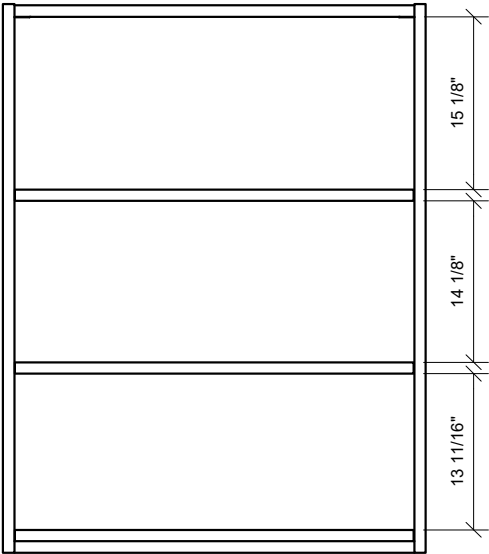
60" H Unit



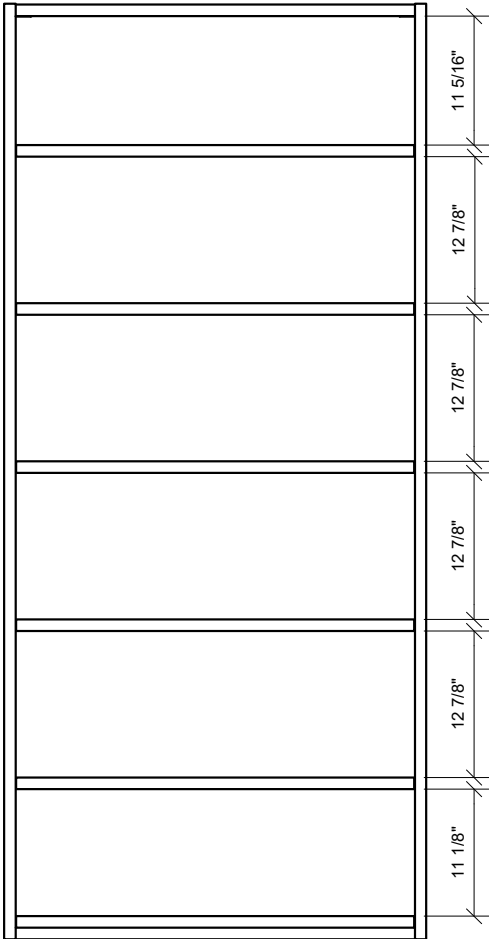
72" H Unit



42" H Unit

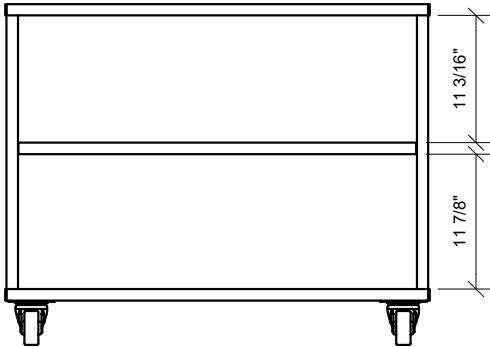


48" H Unit

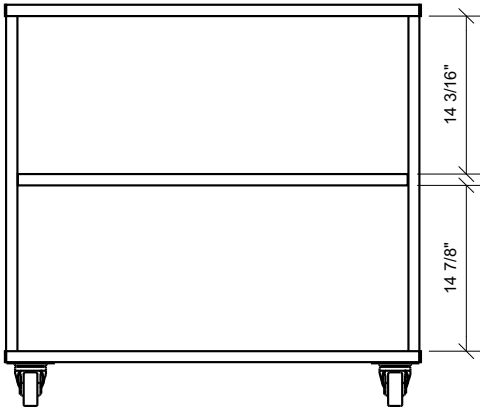


82" H Unit

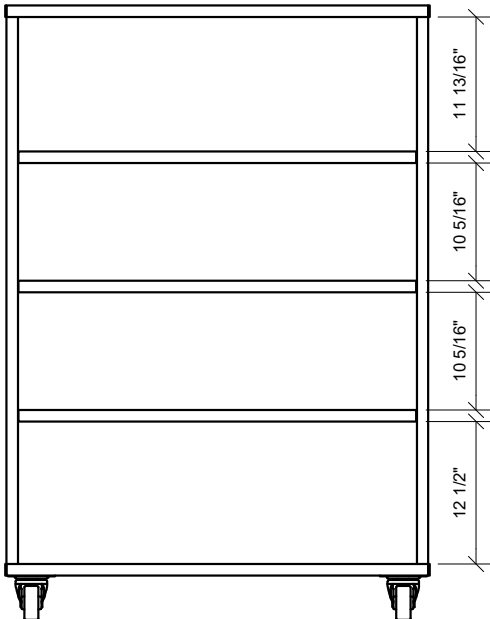
The following images are provided as a reference to show the spacing/details and number of shelves for each of our standard heights to help with the planning process.



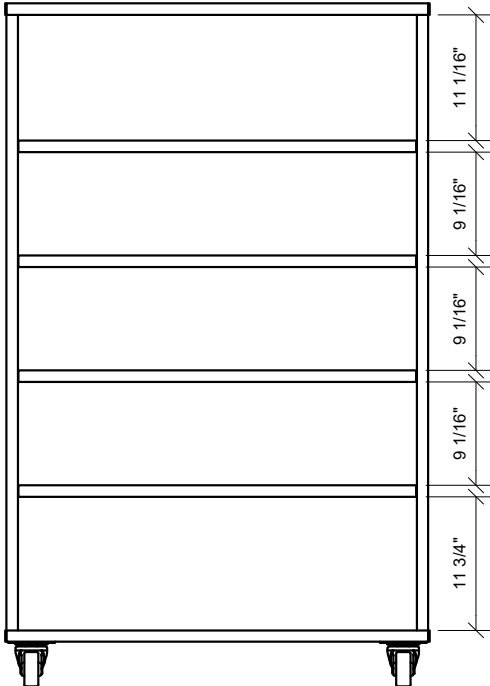
30" H Unit



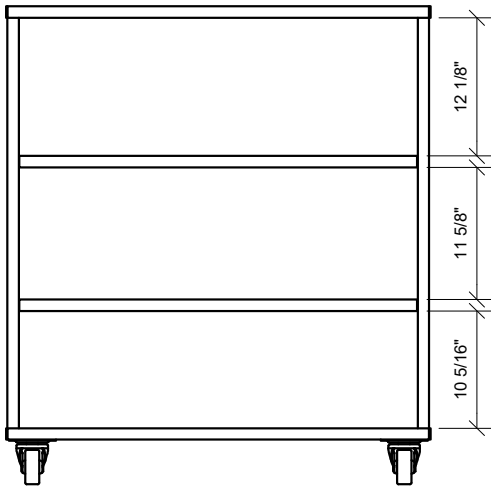
36" H Unit



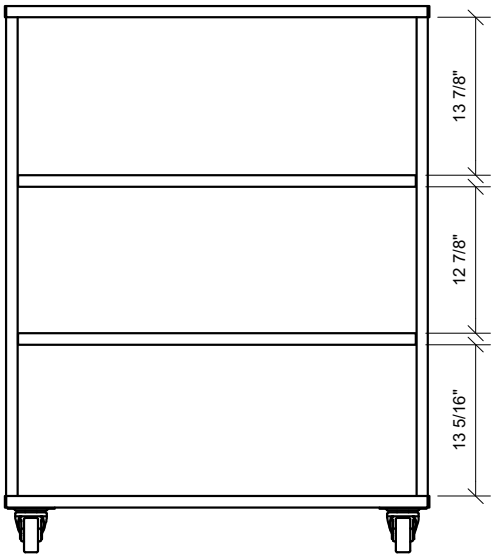
54" H Unit



60" H Unit



42" H Unit



48" H Unit

Part Number
Configurator

BL – **SH** – **1** **2** – **3** **4** – **5**

Required Selections

Component	Code	Description	30" High	36" High	42" High	48" High	60" High	72" High	82" High
1 Height	30	30" High Shelving	\$0	-	-	-	-	-	-
	36	36" High Shelving	-	\$0	-	-	-	-	-
	42	42" High Shelving	-	-	\$0	-	-	-	-
	48	48" High Shelving	-	-	-	\$0	-	-	-
	60	60" High Shelving	-	-	-	-	\$0	-	-
	72	72" High Shelving	-	-	-	-	-	\$0	-
	82	82" High Shelving	-	-	-	-	-	-	\$0
2 Depth	10	10" Deep Shelving	\$801	\$870	\$1,025	\$1,054	\$1,343	\$1,454	\$1,659
	12	12" Deep Shelving	\$801	\$870	\$1,025	\$1,054	\$1,343	\$1,454	\$1,659
3 Width	30	30" Wide Shelving	\$0	\$0	\$0	\$0	\$0	\$0	\$0
	31	31" Wide Shelving	\$0	\$0	\$0	\$0	\$0	\$0	\$0
	32	32" Wide Shelving	\$0	\$0	\$0	\$0	\$0	\$0	\$0
	33	33" Wide Shelving	\$0	\$0	\$0	\$0	\$0	\$0	\$0
	34	34" Wide Shelving	\$0	\$0	\$0	\$0	\$0	\$0	\$0
	35	35" Wide Shelving	\$0	\$0	\$0	\$0	\$0	\$0	\$0
	36	36" Wide Shelving	\$0	\$0	\$0	\$0	\$0	\$0	\$0
4 Shelves	BC	Book Case	\$0	\$0	\$0	\$0	\$0	\$0	\$0
	MS	Metal Shelf	\$140	\$140	\$210	\$210	\$350	\$350	\$420
	PB	Picture Book	\$140	\$140	\$210	\$210	\$350	\$350	\$420
5 Unit Type	I	Island	\$91	\$95	\$95	\$112	\$171	\$216	\$278
	S	Starter	\$91	\$95	\$95	\$112	\$171	\$216	\$278
	A	Adder	\$0	\$0	\$0	\$0	\$0	\$0	\$0
	E	End	\$0	\$0	\$0	\$0	\$0	\$0	\$0

Available Upgrades

Component	Code	Description	30" High	36" High	42" High	48" High	60" High	72" High	82" High
6 Fin. Back	-FB	Finished Back	\$0	\$0	\$0	\$0	\$0	\$0	\$0
7 Adapter	-HA30	Adapt to 30" High	-	\$46	\$46	\$46	\$46	\$46	\$46
	-HA36	Adapt to 36" High	\$180	-	\$46	\$46	\$46	\$46	\$46
	-HA42	Adapt to 42" High	\$180	\$180	-	\$46	\$46	\$46	\$46
	-HA48	Adapt to 48" High	\$180	\$180	\$180	-	\$46	\$46	\$46
	-HA60	Adapt to 60" High	\$180	\$180	\$180	\$180	-	\$46	\$46
	-HA72	Adapt to 72" High	\$180	\$180	\$180	\$180	\$180	-	\$46
	-HA82	Adapt to 82" High	\$180	\$180	\$180	\$180	\$180	\$180	-

-Height Adapters only available on Starter and Adder units.

Part Number
Configurator

BL – **SH** – **1** **2** – **3** **4** – **5** – **6**

Required Selections

Component	Code	Description	30" High	36" High	42" High	48" High	60" High	72" High	82" High
1 Height	30	30" High Shelving	\$0	-	-	-	-	-	-
	36	36" High Shelving	-	\$0	-	-	-	-	-
	42	42" High Shelving	-	-	\$0	-	-	-	-
	48	48" High Shelving	-	-	-	\$0	-	-	-
	60	60" High Shelving	-	-	-	-	\$0	-	-
	72	72" High Shelving	-	-	-	-	-	\$0	-
	82	82" High Shelving	-	-	-	-	-	-	\$0
2 Depth	10	10" Deep Shelving	\$1,054	\$1,170	\$1,345	\$1,378	\$1,832	\$1,910	\$2,197
	12	12" Deep Shelving	\$1,054	\$1,170	\$1,345	\$1,378	\$1,832	\$1,910	\$2,197
3 Radius	R48	48" Radius Shelving	\$0	\$0	\$0	\$0	\$0	\$0	\$0
	R60	60" Radius Shelving	\$0	\$0	\$0	\$0	\$0	\$0	\$0
	R72	72" Radius Shelving	\$0	\$0	\$0	\$0	\$0	\$0	\$0
4 Shelves	BC	Book Case	\$0	\$0	\$0	\$0	\$0	\$0	\$0
	PB	Picture Book	\$140	\$140	\$210	\$210	\$350	\$350	\$420
5 Curve Type	IC	Inner Curve	\$0	\$0	\$0	\$0	\$0	\$0	\$0
	OC	Outer Curve	\$0	\$0	\$0	\$0	\$0	\$0	\$0
6 Unit Type	I	Island	\$121	\$137	\$178	\$186	\$271	\$282	\$303
	S	Starter	\$121	\$137	\$178	\$186	\$271	\$282	\$303
	A	Adder	\$0	\$0	\$0	\$0	\$0	\$0	\$0
	E	End	\$0	\$0	\$0	\$0	\$0	\$0	\$0

Available Upgrades

Component	Code	Description	30" High	36" High	42" High	48" High	60" High	72" High	82" High
7 Adapter	-HA30	Adapt to 30" High	-	\$46	\$46	\$46	\$46	\$46	\$46
	-HA36	Adapt to 36" High	\$180	-	\$46	\$46	\$46	\$46	\$46
	-HA42	Adapt to 42" High	\$180	\$180	-	\$46	\$46	\$46	\$46
	-HA48	Adapt to 48" High	\$180	\$180	\$180	-	\$46	\$46	\$46
	-HA60	Adapt to 60" High	\$180	\$180	\$180	\$180	-	\$46	\$46
	-HA72	Adapt to 72" High	\$180	\$180	\$180	\$180	\$180	-	\$46
	-HA82	Adapt to 82" High	\$180	\$180	\$180	\$180	\$180	\$180	-

-Height Adapters only available on Starter and Adder units.

Part Number
Configurator

BL – **SH** – **1** **2** – **3** **4** – **5**

Required Selections

Component	Code	Description	30" High	36" High	42" High	48" High	60" High	72" High	82" High
1 Height	30	30" High Shelving	\$0	-	-	-	-	-	-
	36	36" High Shelving	-	\$0	-	-	-	-	-
	42	42" High Shelving	-	-	\$0	-	-	-	-
	48	48" High Shelving	-	-	-	\$0	-	-	-
	60	60" High Shelving	-	-	-	-	\$0	-	-
	72	72" High Shelving	-	-	-	-	-	\$0	-
	82	82" High Shelving	-	-	-	-	-	-	\$0
2 Depth	20	20" Deep Shelving	\$1,100	\$1,174	\$1,438	\$1,475	\$2,047	\$2,162	\$2,388
	24	24" Deep Shelving	\$1,100	\$1,174	\$1,438	\$1,475	\$2,047	\$2,162	\$2,388
3 Width	30	30" Wide Shelving	\$0	\$0	\$0	\$0	\$0	\$0	\$0
	31	31" Wide Shelving	\$0	\$0	\$0	\$0	\$0	\$0	\$0
	32	32" Wide Shelving	\$0	\$0	\$0	\$0	\$0	\$0	\$0
	33	33" Wide Shelving	\$0	\$0	\$0	\$0	\$0	\$0	\$0
	34	34" Wide Shelving	\$0	\$0	\$0	\$0	\$0	\$0	\$0
	35	35" Wide Shelving	\$0	\$0	\$0	\$0	\$0	\$0	\$0
	36	36" Wide Shelving	\$0	\$0	\$0	\$0	\$0	\$0	\$0
4 Shelves	BC	Book Case	\$0	\$0	\$0	\$0	\$0	\$0	\$0
	MS	Metal Shelf	\$280	\$280	\$420	\$420	\$700	\$700	\$840
	PB	Picture Book	\$280	\$280	\$420	\$420	\$700	\$700	\$840
6 Unit Type	I	Island	\$170	\$195	\$249	\$278	\$367	\$387	\$407
	S	Starter	\$170	\$195	\$249	\$278	\$367	\$387	\$407
	A	Adder	\$0	\$0	\$0	\$0	\$0	\$0	\$0
	E	End	\$0	\$0	\$0	\$0	\$0	\$0	\$0

Available Upgrades

Component	Code	Description	30" High	36" High	42" High	48" High	60" High	72" High	82" High
9 Adapter	-HA30	Adapt to 30" High	-	\$46	\$46	\$46	\$46	\$46	\$46
	-HA36	Adapt to 36" High	\$180	-	\$46	\$46	\$46	\$46	\$46
	-HA42	Adapt to 42" High	\$180	\$180	-	\$46	\$46	\$46	\$46
	-HA48	Adapt to 48" High	\$180	\$180	\$180	-	\$46	\$46	\$46
	-HA60	Adapt to 60" High	\$180	\$180	\$180	\$180	-	\$46	\$46
	-HA72	Adapt to 72" High	\$180	\$180	\$180	\$180	\$180	-	\$46
	-HA82	Adapt to 82" High	\$180	\$180	\$180	\$180	\$180	\$180	-

-Height Adapters only available on Starter and Adder units.

Part Number
Configurator

BL – **SH** – **1** **2** – **3** **4** – **5** – **6**

Required Selections

Component	Code	Description	30" High	36" High	42" High	48" High	60" High	72" High	82" High
1 Height	30	30" High Shelving	\$0	-	-	-	-	-	-
	36	36" High Shelving	-	\$0	-	-	-	-	-
	42	42" High Shelving	-	-	\$0	-	-	-	-
	48	48" High Shelving	-	-	-	\$0	-	-	-
	60	60" High Shelving	-	-	-	-	\$0	-	-
	72	72" High Shelving	-	-	-	-	-	\$0	-
	82	82" High Shelving	-	-	-	-	-	-	\$0
2 Depth	20	20" Deep Shelving	\$1,483	\$1,586	\$1,882	\$1,924	\$2,515	\$2,664	\$2,976
	24	24" Deep Shelving	\$1,483	\$1,586	\$1,882	\$1,924	\$2,515	\$2,664	\$2,976
3 Radius	R48	48" Radius Shelving	\$0	\$0	\$0	\$0	\$0	\$0	\$0
	R60	60" Radius Shelving	\$0	\$0	\$0	\$0	\$0	\$0	\$0
	R72	72" Radius Shelving	\$0	\$0	\$0	\$0	\$0	\$0	\$0
4 Shelves	BC	Book Case	\$0	\$0	\$0	\$0	\$0	\$0	\$0
	PB	Picture Book	\$280	\$280	\$420	\$420	\$700	\$700	\$840
5 Curve Type	DF	Double Faced	\$0	\$0	\$0	\$0	\$0	\$0	\$0
6 Unit Type	I	Island	\$121	\$137	\$178	\$186	\$271	\$282	\$303
	S	Starter	\$121	\$137	\$178	\$186	\$271	\$282	\$303
	A	Adder	\$0	\$0	\$0	\$0	\$0	\$0	\$0
	E	End	\$0	\$0	\$0	\$0	\$0	\$0	\$0

Available Upgrades

Component	Code	Description	30" High	36" High	42" High	48" High	60" High	72" High	82" High
7 Adapter	-HA30	Adapt to 30" High	-	\$46	\$46	\$46	\$46	\$46	\$46
	-HA36	Adapt to 36" High	\$180	-	\$46	\$46	\$46	\$46	\$46
	-HA42	Adapt to 42" High	\$180	\$180	-	\$46	\$46	\$46	\$46
	-HA48	Adapt to 48" High	\$180	\$180	\$180	-	\$46	\$46	\$46
	-HA60	Adapt to 60" High	\$180	\$180	\$180	\$180	-	\$46	\$46
	-HA72	Adapt to 72" High	\$180	\$180	\$180	\$180	\$180	-	\$46
	-HA82	Adapt to 82" High	\$180	\$180	\$180	\$180	\$180	\$180	-

-Height Adapters only available on Starter and Adder units.

Part Number
Configurator

BL – **MS** – **1** **2** – **3** **4** – **5**

Required Selections

Component	Code	Description	30" High	36" High	42" High	48" High	54" High	60" High
1 Height	30	30" High Shelving	\$0	-	-	-	-	-
	36	36" High Shelving	-	\$0	-	-	-	-
	42	42" High Shelving	-	-	\$0	-	-	-
	48	48" High Shelving	-	-	-	\$0	-	-
	54	54" High Shelving	-	-	-	-	\$0	-
	60	60" High Shelving	-	-	-	-	-	-
2 Depth	16	16" Deep Shelving	\$0	\$0	\$0	\$0	\$0	\$0
	18	18" Deep Shelving	\$0	\$0	\$0	\$0	\$0	\$0
	20	20" Deep Shelving	\$0	\$0	\$0	\$0	\$0	\$0
3 Width	30	30" Wide Shelving	\$1,385	\$1,435	\$1,741	\$1,771	\$1,978	\$2,220
	36	36" Wide Shelving	\$1,407	\$1,457	\$1,763	\$1,797	\$2,140	\$2,290
	42	42" Wide Shelving	\$1,954	\$2,028	\$2,561	\$2,590	\$3,053	\$3,301
	48	48" Wide Shelving	\$1,967	\$2,045	\$2,578	\$2,599	\$3,075	\$3,791
	54	54" Wide Shelving	\$1,976	\$2,054	\$2,587	\$2,739	\$3,101	\$3,813
	60	60" Wide Shelving	\$1,993	\$2,067	\$2,600	\$2,761	\$3,355	\$3,839
	66	66" Wide Shelving	\$2,186	\$2,264	\$2,727	\$2,787	\$3,591	\$4,119
	72	72" Wide Shelving	\$2,212	\$2,286	\$2,749	\$2,809	\$3,613	\$4,141
4 Shelves	BC	Book Case	\$0	\$0	\$0	\$0	\$0	\$0
	MS	Metal Shelf	\$280	\$280	\$560	\$560	\$840	\$1,120
	PB	Picture Book	\$280	\$280	\$560	\$560	\$840	\$1,120
5 Unit Type	SF	Single Faced	\$0	\$0	\$0	\$0	\$0	\$0

Part Number
Configurator

BL – **MS** – **1** **2** – **3** **4** – **5**

Required Selections

Component	Code	Description	30" High	36" High	42" High	48" High	54" High	60" High
1	Height	30 30" High Shelving	\$0	-	-	-	-	-
		36 36" High Shelving	-	\$0	-	-	-	-
		42 42" High Shelving	-	-	\$0	-	-	-
		48 48" High Shelving	-	-	-	\$0	-	-
		54 54" High Shelving	-	-	-	-	\$0	-
		60 60" High Shelving	-	-	-	-	-	-
2	Depth	16 16" Deep Shelving	\$0	\$0	\$0	\$0	\$0	\$0
		18 18" Deep Shelving	\$0	\$0	\$0	\$0	\$0	\$0
		20 20" Deep Shelving	\$0	\$0	\$0	\$0	\$0	\$0
3	Width	R48 48" Radius Shelving	\$2,526	\$2,718	\$3,379	\$3,531	\$4,087	\$4,743
		R60 60" Radius Shelving	\$2,526	\$2,718	\$3,379	\$3,531	\$4,087	\$4,743
		R72 72" Radius Shelving	\$2,526	\$2,718	\$3,379	\$3,531	\$4,087	\$4,743
4	Shelves	BC Book Case	\$0	\$0	\$0	\$0	\$0	\$0
		PB Picture Book	\$280	\$280	\$560	\$560	\$840	\$1,120
5	Curve Type	IC Inner Curve	\$0	\$0	\$0	\$0	\$0	\$0
		OC Outer Curve	\$0	\$0	\$0	\$0	\$0	\$0

Part Number
Configurator

BL – **MS** – **1** **2** – **3** **4** – **5**

Required Selections

Component	Code	Description	30" High	36" High	42" High	48" High	54" High	60" High
1 Height	30	30" High Shelving	\$0	-	-	-	-	-
	36	36" High Shelving	-	\$0	-	-	-	-
	42	42" High Shelving	-	-	\$0	-	-	-
	48	48" High Shelving	-	-	-	\$0	-	-
	54	54" High Shelving	-	-	-	-	\$0	-
	60	60" High Shelving	-	-	-	-	-	-
2 Depth	20	20" Deep Shelving	\$0	\$0	\$0	\$0	\$0	\$0
	24	24" Deep Shelving	\$0	\$0	\$0	\$0	\$0	\$0
3 Width	30	30" Wide Shelving	\$1,479	\$1,529	\$1,929	\$1,959	\$2,400	\$2,618
	36	36" Wide Shelving	\$1,641	\$1,691	\$2,021	\$2,055	\$2,588	\$2,924
	42	42" Wide Shelving	\$2,212	\$2,377	\$3,103	\$3,137	\$3,757	\$4,403
	48	48" Wide Shelving	\$2,352	\$2,426	\$3,125	\$3,163	\$3,779	\$4,521
	54	54" Wide Shelving	\$2,374	\$2,452	\$3,151	\$3,417	\$4,133	\$4,705
	60	60" Wide Shelving	\$2,400	\$2,592	\$3,405	\$3,465	\$4,155	\$4,801
	66	66" Wide Shelving	\$2,492	\$2,614	\$3,571	\$3,631	\$4,387	\$5,081
	72	72" Wide Shelving	\$2,518	\$2,640	\$3,593	\$3,653	\$4,413	\$5,103
4 Shelves	BC	Book Case	\$0	\$0	\$0	\$0	\$0	\$0
	MS	Metal Shelf	\$280	\$280	\$560	\$560	\$840	\$1,120
	PB	Picture Book	\$560	\$560	\$1,120	\$1,120	\$1,680	\$2,240
5 Unit Type	DF	Double Faced	\$0	\$0	\$0	\$0	\$0	\$0

Part Number
Configurator

BL – **MS** – **1** **2** – **3** **4** – **5**

Required Selections									
Component	Code	Description	30" High	36" High	42" High	48" High	54" High	60" High	
1 Height	30	30" High Shelving	\$0	-	-	-	-	-	
	36	36" High Shelving	-	\$0	-	-	-	-	
	42	42" High Shelving	-	-	\$0	-	-	-	
	48	48" High Shelving	-	-	-	\$0	-	-	
	54	54" High Shelving	-	-	-	-	\$0	-	
	60	60" High Shelving	-	-	-	-	-	-	
2 Depth	20	20" Deep Shelving	\$0	\$0	\$0	\$0	\$0	\$0	
	24	24" Deep Shelving	\$0	\$0	\$0	\$0	\$0	\$0	
3 Width	R48	48" Radius Shelving	\$2,934	\$3,362	\$4,195	\$4,229	\$5,079	\$6,331	
	R60	60" Radius Shelving	\$2,934	\$3,362	\$4,195	\$4,229	\$5,079	\$6,331	
	R72	72" Radius Shelving	\$2,934	\$3,362	\$4,195	\$4,229	\$5,079	\$6,331	
4 Shelves	BC	Book Case	\$0	\$0	\$0	\$0	\$0	\$0	
	PB	Picture Book	\$560	\$560	\$1,120	\$1,120	\$1,680	\$2,240	
5 Curve Type	DF	Double Faced	\$0	\$0	\$0	\$0	\$0	\$0	