

# SF-ONE™

## SPECIFICATION SHEET

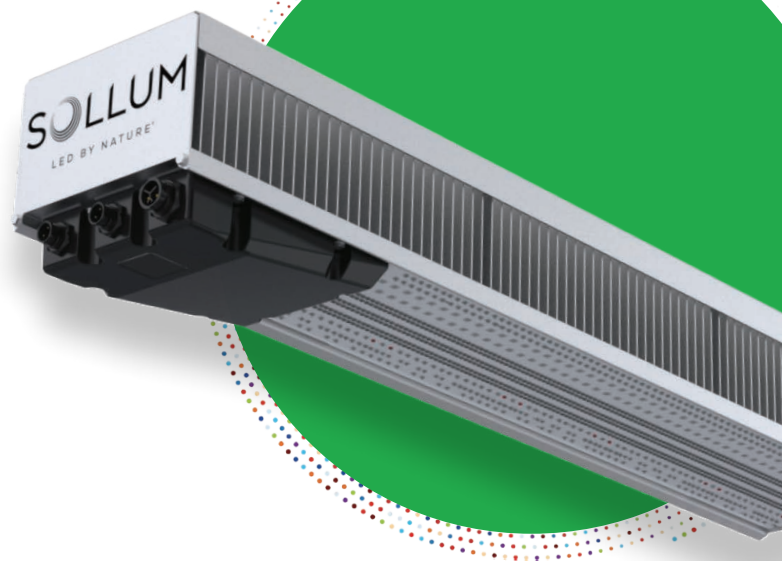
### SETTING THE STANDARD IN DYNAMIC GROW LIGHTS

No other solution equals Sollum's LED design.

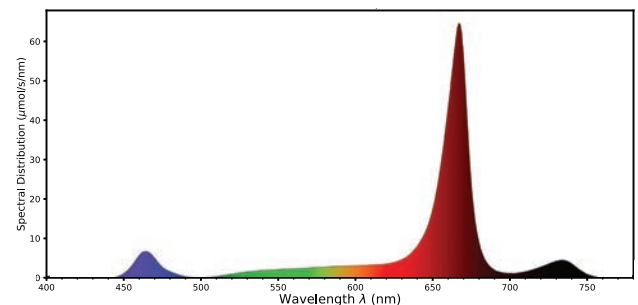
Do you manage a large greenhouse operation and need to bring to market high volumes of produce at the best price? Are you concerned about costs and looking to maximize the energy efficiency of your greenhouse? Sollum's unique **SF-ONE™** grow light is the product for your business.

- Our efficient multi-channel fixture is powered by artificial intelligence to recreate, and perfect, a significant segment of the Sun's spectra and intensity.
- The SF-ONE can handle any light recipe, enabling cost-effective multi-crop management and crop rotation all from one single fixture.
- The fixture is AI-powered by the fully programmable SUN as a Service® cloud platform for a truly dynamic lighting experience.
- Our unique solution is supported by our team of agronomists, technicians, engineers and chief horticultural specialist, available at all times to answer your questions and recommend solutions to help you grow your business.

This is why we say that our solution is LED by nature and that it's as simple as **Plug and Play Sun all Day**.



SPECTRUM



## Specifications

\*Output (+/-5%)

Photon delivery is light recipe and current dependent. The maximum useable output per channel is listed here.

Product code	SF-05DA-88A
PPE (400-700nm)	3.0 $\mu\text{mol/J}$
PPF (400-700nm)	2250 $\mu\text{mol/s}$
ePPE (400-800nm)	3.0 $\mu\text{mol/J}$
ePPF (400-800nm)	2405 $\mu\text{mol/s}$
PF Blue (400-500nm)	220 $\mu\text{mol/s}$
PF Green (500-600nm)	300 $\mu\text{mol/s}$
PF Red (600-700nm)	1730 $\mu\text{mol/s}$
PF Far Red (700-800nm)	155 $\mu\text{mol/s}$
Certifications / Approvals	UL 8800, UL 8750, CE, CSA 250.0, CSA 250.13
L90	80 000 hours
Warranty	5 Years
Dimming	0-100% (all channels) via SUNaaS™ platform
Ambient Temperature Range	0-35°C operating range
Cooling	Passive
Environment	Greenhouse / Indoor (Non-stacked)
Application	Top lighting, supplemental or sole-source
Tunable Spectrum	Yes
Heat Value BTU/hr	750
Power Factor	>0.98 at full load
Total Harmonic Distortion	5% at full load [ANSI]
Connection	Wieland RST20I3, IP65
Ingress Protection	IP65
Spectrum	Multi-channel, tunable
Spectral Range	400 to 800 nm
Beam angle	120 degrees

## Power

AC input voltage	277 / 347 / 400 VAC
AC power	785 / 781 / 779 W
Max Current	2.8 / 2.3 / 1.9 A

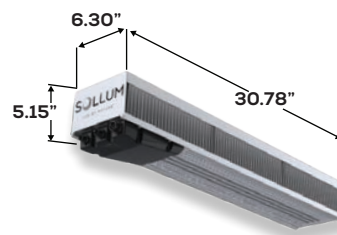


## CONTACT US

Phone: +1 866 220 5455 Email: [info@sollum.tech](mailto:info@sollum.tech) [sollum.tech](http://sollum.tech)

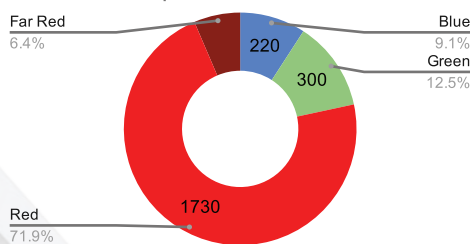
## Dimensions

Length	30.78"
Width	6.30"
Height	5.15"
Weight - Light	5.85 kg / 12.9 lbs
Weight - Driver	4.3 kg / 9.5 lbs

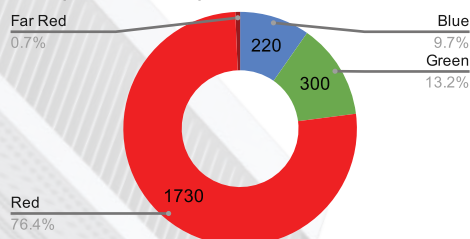


## Spectral flexibility examples

Global: 2405  $\mu\text{mol}$



Sample 1: 2265  $\mu\text{mol}$



Sample 2: 170  $\mu\text{mol}$

