



# ACTUE PASSENGER LIFTS



ACUTE

ELEVATORS





When ACUTE was established in November 2013 by a team of well trained lift engineers, its business course was very promising. Their experience of the UK lift market, but also their passion and vision, set a strong basis for the creation of a modern and innovative company.

The company's head offices based in Kent cover the south of England. In 2021, Acute Elevators (North) was founded, based in Manchester to increase the service levels in the North of England.

The staff consists of 14 engineers, technicians and office employees/engineers who have thorough knowledge of modern technologies and application in the installation and maintenance processes. Furthermore, the absolute coordination between the departments, After Sales, Procurement, Sales, Marketing and HR, is forming ACUTE's staff to a dynamical team.

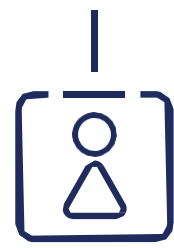
Therefore, a natural consequence of ACUTE's organisation, function and philosophy is not only to create, but most of all to maintain its long term cooperations with all clients.



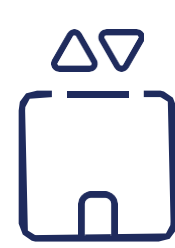
Elevators.



Passenger Lifts.



Panoramic Lifts.



Homelifts.



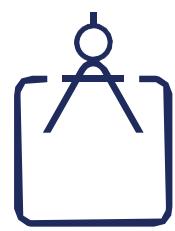
Hospital Lifts.



Spare Parts.



Accessories.



Technical Specs.



24h Support.



Safety.



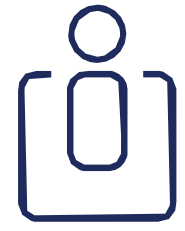
Ecology.



Accessibility.



Advantages.



Information.







# Advantages

A number of strategic advantages have contributed to ACUTE's profile as an innovative, constantly rising and particularly competitive company:

- ▶ Quality Assurance System complies with ISO 9001:2008.

All products fully meet the requirements of the relevant regulations of the European Union and the UK. Furthermore, ACUTE is paying attention so that all suppliers also have the necessary certifications to ensure the same high level of quality.

- ▶ Integrated lift solutions and lift components from design and final installation, to service and maintenance after sales.

- ▶ Adjustment according to the needs and specific requirements of every customer. We analyse, design and manufacture even the most demanding expectations.

- ▶ 24/7 technical support for the installation and maintenance of its products.

The company has given a new meaning to the term After Sales in order to be able to assure that there is always a qualified technician behind every ACUTE product.

- ▶ Research, management and service according to the different needs of every market.

- ▶ Reliable installation, maintenance and operational control systems strictly and only by authorized partners and distributors.



# Index

<b>Elevators</b>	<b>8</b>
Stainless Steel	10 - 11
Stainless Steel COLOR	11 - 13
Forest	14 - 15
Prestige	16 - 17
Galaxy	18 - 19
Epoxy	20 - 21
Epoxy myReflection	22 - 23
Panoramic Lifts	24 - 27
Hospital Lifts	28 - 31
<b>Technical Specifications</b>	<b>32</b>
Eco MRL Lifts	34 - 37
Traction MR	38
Traction Cargo	39
Basic Traction MRL	40
Hydraulic Lifts	41 – 43
Low Pit /Low Headroom Lifts EN81-21	44 - 45







## **Accessories**

**47**

False Ceilings & Handrails

48 - 49

Car and Landing Operating Panels

50 - 51

Floors

52

Wall Panels

53 - 54

## **Spare Parts**

**57**

Modernisation Kit

58 - 59

Doors

60 - 61

Electrical & Value added products

62 - 63







# ELEVATORS

High Aesthetics & Reliability

The high level of automation in the production process makes ACUTE a modern industry which is able to manufacture and supply as follows:

- ▶ Complete lift systems (hydraulic & traction lifts with machine room or machine room less)
- ▶ Cabins
- ▶ Panoramic cabins
- ▶ All type of components

Due to the collaboration with the biggest European companies, ACUTE is importing components from specialised suppliers in order to ensure high quality in every product used.

# Stainless Steel

Classic is the new modern

The industrial style finds its ultimate expression in the Stainless Steel series.

A wide range of finishing and false ceilings made entirely of brushed stainless steel or mirror – for a more impressive result - and carefully selected floors and handrails, compose high aesthetic and robust cabins.

At the same time and in order to underline how important ACUTE considers every detail, we offer the opportunity to construct corners – either the classic straight form or the curved - and the use of special or patterned Stainless Steel finishing.







## PROPOSED MATERIAL

### False Ceilings



FC2



FC6



FC8

### Side Walls



Stainless St.  
Mirror



Stainless St.  
Satine



Stainless St.  
Dama



Stainless St.  
Linen



Stainless St.  
Leather

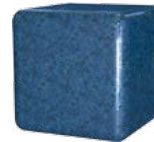


Stainless St.  
EtchSilv01

### Floors



Starlight  
Black



Starlight  
Sapphire



Assoluto  
Black



Nilos Porc.  
Grey



Plastic Floor  
G432



Plastic Floor  
PF5



#### Left Cabin

- Cabin Finishes: Stainless Steel Etched Silver 01 ► Handrail: HR4
- False Ceiling: FC2 ► COP: BC431 ► Mirrors on 1/3 of cabins width

#### Right Cabin

- Cabin Finishes: Stainless Steel Satin ► Floor: Starlight Black ► False Ceiling: FC6 ► COP: BCK191 ► Handrail: HR4 ► Mirror on 1/2 of cabin's height

In order to view the full range of our samples contact your ACUTE Sales Representative.

# Stainless Steel COLOR

Put color in your space

The industrial style evokes with...color in the ground breaking series Stainless Steel myColor, the updated version of the Stainless Steel series.

The new trends want to soften the “strictness” of the Stainless Steel with different shades, and ACUTE as an innovative company, manufactures trendy and elegant cabins which highlight their absolute modern design by creating a pleasant mood.

Therefore, they are being chosen by young couples, civil engineers and architects who emphasise on design and atmosphere at home or in the office







## Proposed Material

### False Ceilings



FC9



FC13



FC19

### Side Walls



Stainless St.  
Bronze Mirror



Stainless St.  
Bronze Satine



Stainless St.  
341 Blue



Stainless St.  
Blue Mirror



Stainless St.  
EtchGold01



Stainless St.  
Gold Mirror

### Floors



Starlight  
Black



Starlight  
White



Starlight  
Ruby



Granite  
GP10



Granite Wave  
Red



Nilos Porc.  
Grey



#### Left Cabin

- Cabin Finishes: Stainless Steel Bronze Satine ► Handrail: HR2 ► False Ceiling: 5 Spots
- COP: Full Height COP ► Mirror on 1/3 of cabin's width ► Curved Corners

#### Right Cabin

- Cabin Finishes: Stainless Steel 341 Blue ► Floor: Starlight White ► False Ceiling: FC19
- COP: Wave Shaped Stainless Steel Blue Mirror ► Handrail: HR2 ► Straight Corners

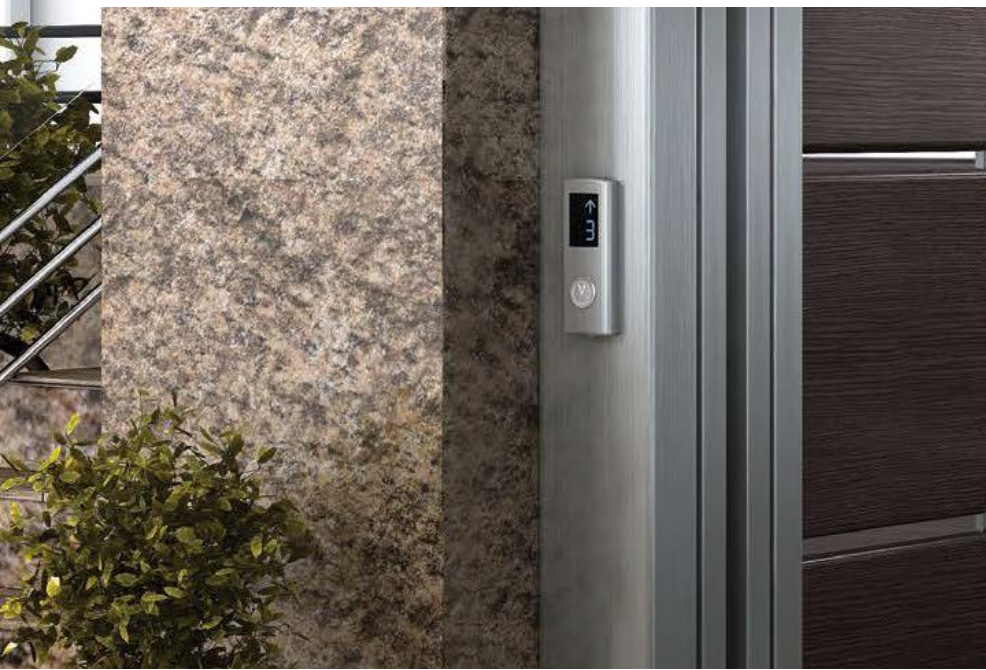
In order to view the full range of our samples contact your ACUTE Sales Representative.

# Forest

Travel... naturally

For the wood lovers, we created the Forest series. Horizontal wood panels with stainless steel details, high quality carpet floors and artificial granite, are perfectly combined creating a warm and familiar composition.

The cabins of the Forest series are ideal for residences and hotels.







## Proposed Material

### False Ceilings



FC3



FC4



FC7

### Side Walls



Wooden  
Panel 6380



Wooden  
Panel 6610



Wooden  
Panel P332



Wooden  
Panel 6678



Wooden  
Panel 1599

### Floors



Starlight  
Black



Morgan  
Mocha



Granite  
GP38



Mipolam  
0360 B



Plastic Floor  
G426



Plastic Floor  
PF1

### Left Cabin

- Cabin Finishes: Wooden Panels 1599 ► Stainless Steel Mirror Grooves
- Handrail: HR3 ► False Ceiling: FC7 ► COP: BCG 131

### Right Cabin

- Cabin Finishes: Wooden Panels 1516 ► Floor: Starlight Black ► False Ceiling: FC3 ► Full Height Car Operating Panel ► Handrail: HR2

In order to view the full range of our samples contact your ACUTE Sales Representative.

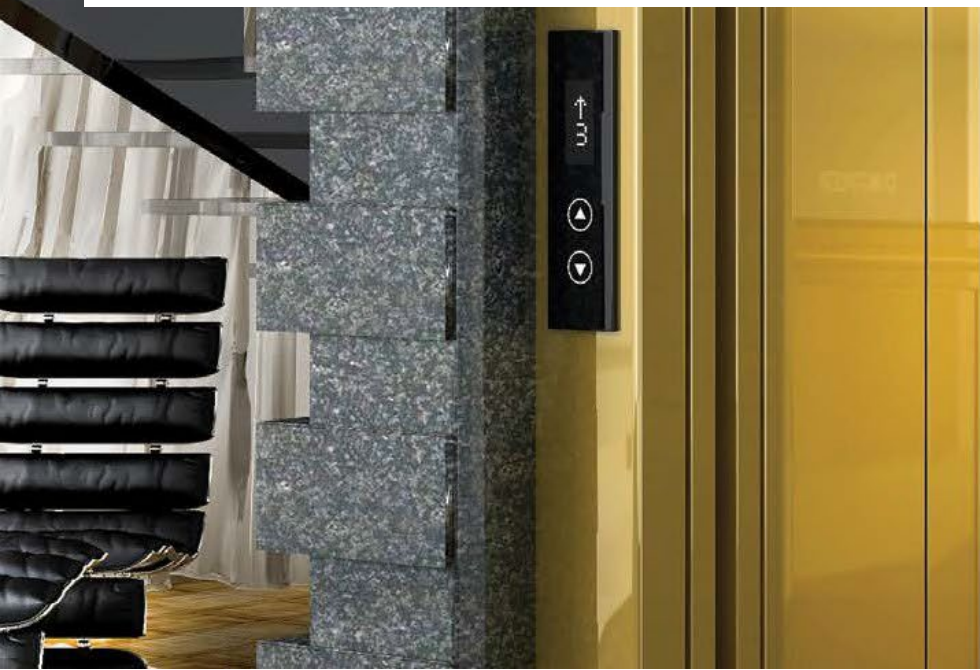


# Prestige

Worth every inch

The sophisticated elegance is reflected in the prestige series.

The variety in materials, false ceilings, handrails, floors and mirrors in unlimited combinations, create high class cabins, distinguished for their absolute design and luxury.





## Proposed Material

### False Ceilings



FC7



FC8



FC11

### Side Walls



Laminate  
421 Lucida



Laminate  
810



Laminate  
879



Laminate  
861



Stainless St.  
Gold Mirror



Stainless St.  
EtchGold01

### Floors



Starlight  
Black



Starlight  
Ruby



Morgan  
Mocha



Granite Nilos  
Porcelanico



Granite  
GP10



Starlight  
Sapphire



#### Left Cabin

- Cabin Finishes: Stainless Steel Gold Mirror ► Handrail: HR2 in Gold Mirror
- False Ceiling: FC8 ► COP: BCK191 ► Mirror on 1/2 of cabin's height

#### Right Cabin

- Cabin Finishes: Laminate 421 Lucida ► Floor: PF7 ► False Ceiling: FC8
- COP: Full Height COP ► Handrail: HR2 ► Mirror: Full Height

In order to view the full range of our samples contact your ACUTE Sales Representative.



# Galaxy

## Take a lift to the stars

The Galaxy may belong to ACUTE's basic line, however it offers unbelievable combinations.

Thanks to a system of multiple standardised options, we have the opportunity to differentiate according to our customers' needs.

A wide range of different coloured laminates and designs, Stainless Steel corners, floors, false ceilings and handrails, compose top class cabins.







## Proposed Material

### False Ceilings



FC1



FC4



FC11

### Side Walls



Laminate  
5372



Laminate  
5410



Laminate  
5610



Laminate  
861



Laminate  
1379



Laminate  
313

### Floors



Starlight  
Black



Granite Nilos  
Porcelanico



Plastic Floor  
PF1



Plastic Floor  
G426



Plastic Floor  
PF5



Oregon  
Natural

### Left Cabin

- Cabin Finishes: Laminate R5610HG ► Brushed Stainless Steel Corners ► False Ceiling: FC4 ► Full Height COP
- Handrail: HR3 ► Mirror on 1/2 of cabin's height

### Right Cabin

- Cabin Finishes: Laminate 313 ► Floor: CF2 Tile ► False Ceiling: FC5
- COP: Full height at the side ► Handrail: HR3 ► Mirror on 1/2 of cabin's height

In order to view the full range of our samples contact your ACUTE Sales Representative.

# Epoxy

Low cost but not shabby

Simplicity meets functionality in the Epoxy series. Powder coated\* ceilings and side walls in high quality and durability, modern spot lights on the ceilings and durable plastic floors, make up the affordable solution for many years of daily elevation, without compromises!

\*\* Powder coating is the manufacturing process of coating metal surfaces with special epoxy or polyester resins in order to achieve protection against corrosion and also the desired colour and appearance. For painting surfaces for architectural applications, polyester powders are used. These powders are characterized by high resistance to external conditions. ACUTE has a special oven of a total length of 32 meters, total area of 160 m<sup>2</sup> (square meters) and total volume of 400 m<sup>3</sup> (cubic meters). The unlimited variety of colours offered by electrostatic paint is one of the factors that led to today's widespread use. The colour codes are based on the RAL colour matching system.



**DOPPLER**  
HERZOG & NEUBAUER



## Proposed Material

### False Ceilings



FC1



FC5



FC11

### Side Walls



Epoxy 501  
Black



Epoxy 501  
Silver



Epoxy 501  
Gold



Epoxy 501  
Bronze



Epoxy  
7032



Epoxy  
7042

### Floors



Plastic Floor  
PF1



Plastic Floor  
PF2



Mipolam  
0360 B



Plastic Floor  
G429



Plastic Floor  
G424



Steel Themis  
Orzo (Painted)

### Left Cabin

- Cabin Finishes: Lotus & Snowflakes Epoxy 501 Black ► False Ceiling: 5 Spots
- COP: Wall mounted ► Handrail: HR1 ► Mirror on 1/2 of cabin's height

### Right Cabin

- Cabin Finishes: Epoxy 501 Bronze ► Floor: Starlight White ► False Ceiling: FC1
- RAL 9016 ► COP: Full Height COP RAL 9016 ► Handrail: HR3 RAL 9016

In order to view the full range of our samples contact your ACUTE Sales Representative.



# Epoxy myREFLECTION

Make it personal!

The advanced generation of the Epoxy line is the new series, Epoxy myReflection.

ACUTE offers the option of a digital printing in the interior of the cabin according to the desired image of the client and his personal style, or a slogan/logo for companies. Furthermore we can offer a library with a wide selection of images.





## Proposed Material

### False Ceilings



FC9



FC10

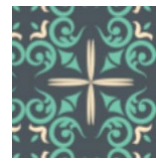


FC17

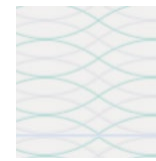
### Side Walls



Arabic  
Print



Vintage  
Print



Infinity  
Print



Colorful Tree  
Print



Bolshoi  
Print



Honeycomb  
Print

### Floors



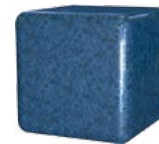
Starlight  
Black



Starlight  
White



Starlight  
Ruby



Starlight  
Sapphire



Mipolam  
1138 Sand



Plastic Floor  
9735

### Left Cabin

► Cabin Finishes: Elephant Digital Print ► False Ceiling: FC17 - RAL 3003

► Floor: Starlight Ruby ► LOP: Face Plate ► Mirror on 2/3 of cabin's width

### Right Cabin

► Cabin Finishes: Colourful Tree Digital Print ► False Ceiling: 5 Spots - 501 Black

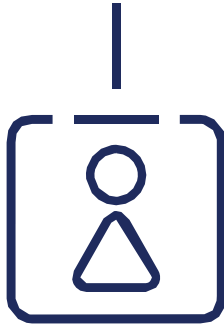
► COP: Horizontal with handrail ► Floor: Starlight Black & Starlight White

In order to view the full range of our contact your ACUTE Sales Representative.









# Panoramic Lifts

Carried Away by the View

We design panoramic cabins for those who want to enjoy the view from above in its entire splendour.

Square, semi-circular or completely circular, our panoramic cabins are perfectly covering the most demanding design requirements.

Due to the enormous flexibility in choosing forms and materials, each panoramic cabin is always designed and constructed in absolute harmony with the architectural style of each building.

This way the cabin is being upgraded from a simple means of transportation, to an architectural element. A real “ornament”, ideal for luxury stores, shopping malls and modern residences.







## Proposed Material

### False Ceilings



FC5



FC9



FC16

### Handrails



HR1



HR2



HR3

### Floors



Granite  
GP10



Plastic Floor  
G426



Plastic Floor  
9728



Starlight  
Black



Starlight  
Blue



Starlight  
Ruby



Cover Image  
Panoramic Lifts, Mall Globus

Left Image  
Panoramic Lifts, Rodić M&B

Right Image  
Panoramic Lift, Office Building

[www.acute-elevators.co.uk](http://www.acute-elevators.co.uk)







# Hospital Lifts

Safe & Sound...less

When it comes to hospitals, every second counts.

ACUTE meets the highest expectations through state-of-the-art technology.

ACUTE Hospital Lifts are the right choice for the demanding needs of medical facilities. Emergency situations, continuous traffic of patients, doctors, nurses and visitors, transportation of bulky beds, wheelchairs and medical equipment are everyday challenges that demand reliable and robust solutions.

Our hospital lifts offer high safety, great functionality, excellent riding comfort and cost reduction by energy saving systems along with modern design.







## Proposed Material

### False Ceilings



FC1



FC4



FC5

### Side Walls



Stainless St.  
Dama



Stainless St.  
Linen



Stainless St.  
Satine



Laminate  
R5411



Laminate  
AB810



Laminate  
388

### Floors



Mipolam  
0360 B



Mipolam  
1138 Sand



Plastic Floor  
9728



Plastic Floor  
9735



Starlight  
Blue



Starlight  
White



Cover Image

Hospital Lift, St. Luke's Hospital

Left Image

Hospital Lift, Falkland Care Home

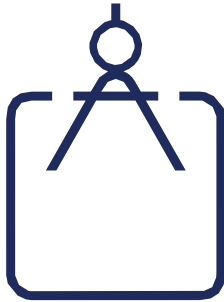
Right Image

Hospital Lift, Republican Blood Center

[www.acute-elevators.co.uk](http://www.acute-elevators.co.uk)







# Technical Specifications

Take a Look Inside

ACUTE offers a comprehensive range of elevator solutions designed to meet vertical transportation needs.

We have the right application for every kind of building either residential or commercial. We design and manufacture products keeping high quality and safety standards.

Our product range comprises both traction and hydraulic lifts for the transportation of passengers, cars as well as small and heavy freight.



# Eco 3 Traction MRL [2:1]

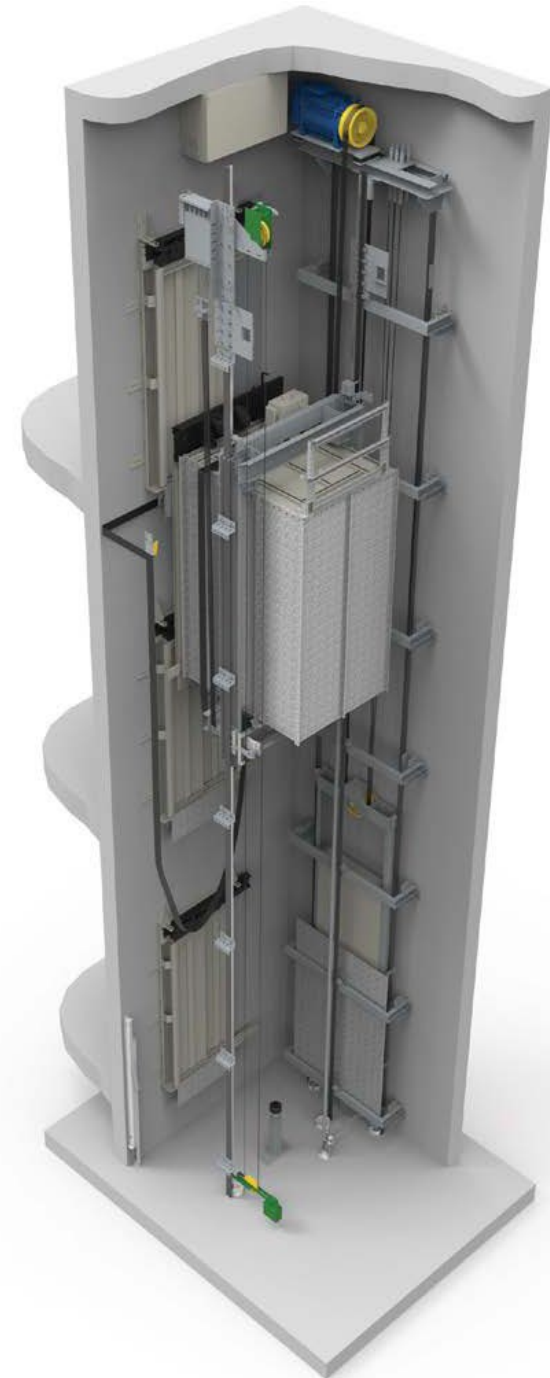
## Features:

- ▶ High quality sliding guide shoes with integrated isolation of vibrations (or rollers as an option)
- ▶ Isolation of the motor and the motor base using new vibration dampers with new philosophy for the mounting of the motor in the elevator shaft
- ▶ Isolation of the cabin and the car sling using vibration dampers between cabin and the ties which support it
- ▶ Redesigned guide rail brackets allowing larger tolerances  
on dimensions of the elevator shaft
- ▶ Low energy consumption integrating ACUTE's new Kinetic Energy Recovery System (RECO+).
- ▶ Modifications based on the EN 81-20

## Specifications

Rated Load (kg)	375	630	1.000	1.600
Passengers	5	8	13	21
Door Type	2PT	2PT	2PT	2PT
Door Opening (mm)	800x2.000	900x2.000	900x2.000	1.200x2.000
Car Depth (mm)	1.100	1.400	2.100	2.400
Car Width (mm)	950	1.100	1.100	1.450
Shaft Depth (mm)	1.550	1.800	2.500	2.800
Shaft Width (mm)	1.510	1.660	1.750	2.170
Pit Depth (mm)	1.060 (1m/s)	1.060 (1m/s)	1.150 (1m/s)	1.200 (1m/s)
	1.260 (1.6m/s)	1.260 (1.6m/s)	1.350 (1.6m/s)	1.400 (1.6m/s)
Headroom* (mm)	3.350 (1 m/s)	3.350 (1 m/s)	3.350 (1m/s)	3.450 (1 m/s)
	3.550 (1.6m/s)	3.550 (1.6m/s)	3.550 (1.6m/s)	3.650 (1.6m/s)

\* For internal Car height 2100mm





# Eco 2is Traction MRL [2:1]

## Features:

- ▶ Capacity range from 375kg up to 1000kg
- ▶ Speed up to 1 m/sec
- ▶ Travel up to 30m
- ▶ Standard Automatic Emergency Operation
- ▶ High efficiency VVVF gearless motor
- ▶ Frame type car sling
- ▶ Smooth and quiet driving unit
- ▶ Compliance with Directive 95/16/EC and European

Standards EN 81 Series

Specifications			
Rated Load (kg)	375	630	1.000
Passengers	5	8	13
Door Type	2PT	2PT	2PT
Door Opening (mm)	800x2.000	900x2.000	900x2.000
Car Depth (mm)	1.100	1.400	2.100
Car Width (mm)	950	1.100	1.100
Shaft Depth (mm)	1.550	1.800	2.500
Shaft Width (mm)	1.470	1.620	1.710
Pit Depth (mm)	250	250	250
Headroom* (mm)	3.300	3.300	3.300

\* For internal Car height 2100mm



# Eco 2 Traction MRL

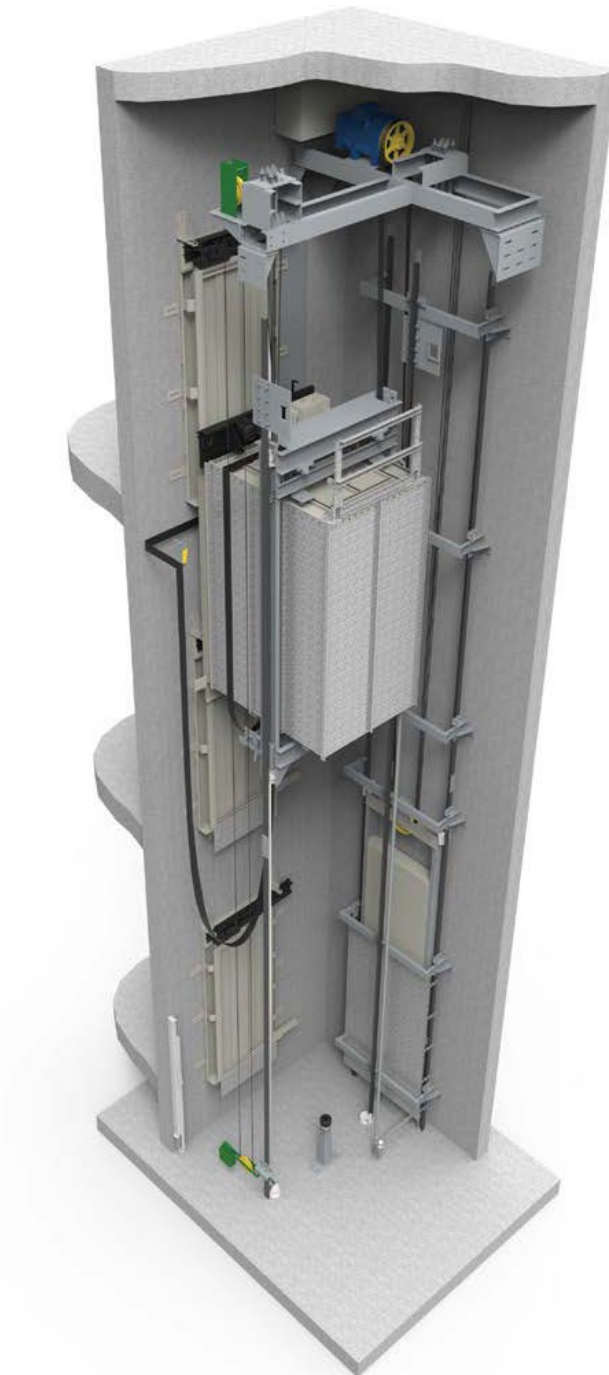
## Features:

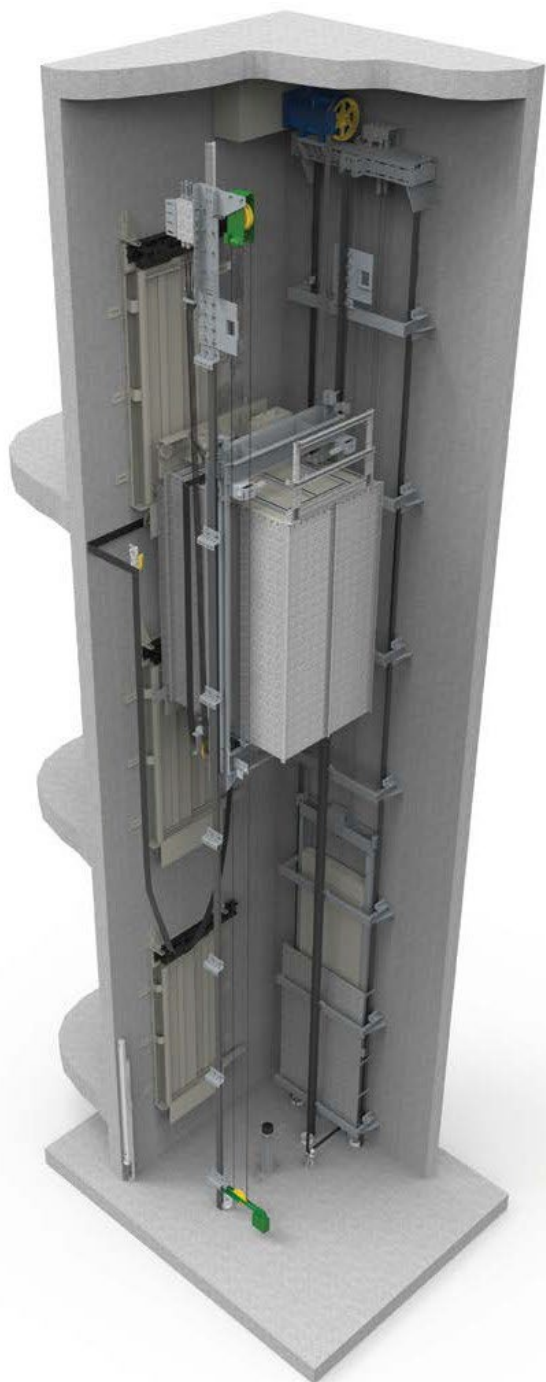
- Capacity range from 1.800kg up to 3.000 kg
- Speed up to 2m/sec
- Travel up to 100m
- Standard Automatic Emergency Operation
- VVVF encoder controlled gearless motor
- Compliance with Directive 95/16/EC and European

Standards EN 81 Series

Specifications			
Rated Load (kg)	1.800	2.300	3.000
Passengers	24	30	40
Door Type	2PT/4PC	2PT/4PC	2PT/4PC
Door Opening (mm)	1.200x2.000 1.300x2.000	1.400x2.000 1.400x2.000	1.600x2.000 1.700x2.000
Car Depth (mm)	2.500	2.700	2.900
Car Width (mm)	1.500	1.700	2.000
Shaft Depth (mm)	2.900	3.100	3.300
Shaft Width (mm)	2.250	2.500	2.800
Pit Depth (mm)	1.150	1.220	1.700
Headroom* (mm)	3.900	3.900	4.000

\* For internal Car height 2100mm





# Eco 2i Traction MRL [2:1]

## Features:

- ▶ Capacity range from 375kg up to 1.600kg
- ▶ Speed up to 2,5 m/sec
- ▶ Travel up to 100m
- ▶ Standard Automatic Emergency Operation
- ▶ High efficiency VVVF gearless motor
- ▶ Frame type car sling
- ▶ Smooth and quiet driving unit
- ▶ Compliance with Directive 95/16/EC and European

## Standards EN 81 Series

Specifications				
Rated Load (kg)	375	630	1.000	1.600
Passengers	5	8	13	21
Door Type	2PT	2PT	2PT	2PT
Door Opening (mm)	800x2.000	900x2.000	1.000x2.000	1.200x2.000
Car Depth (mm)**	1.100/1.200	1.400	2.100/2.600	2.400
Car Width (mm)	950/900	1.100	1.100/1.400	1.450
Shaft Depth (mm)**	1.550/1.750	1.800	2.500/2.000	2.800
Shaft Width (mm)**	1.510/1.510	1.660	1.750/2.050	2.170
Pit Depth (mm)	1.060 (1m/s)	1.060 (1m/s)	1.150 (1m/s)	1.200 (1m/s)
	1.260 (1.6m/s)	1.260 (1.6m/s)	1.350 (1.6m/s)	1.400 (1.6m/s)
Headroom* (mm)	3.350 (1m/s)	3.350 (1m/s)	3.350 (1m/s)	3.450 (1m/s)
	3.550 (1.6m/s)	3.550 (1.6m/s)	3.550 (1.6m/s)	3.650 (1.6m/s)

\* For internal Car height 2100mm

\*\* Single Entrance/Through Car



# Traction MR

## Features:

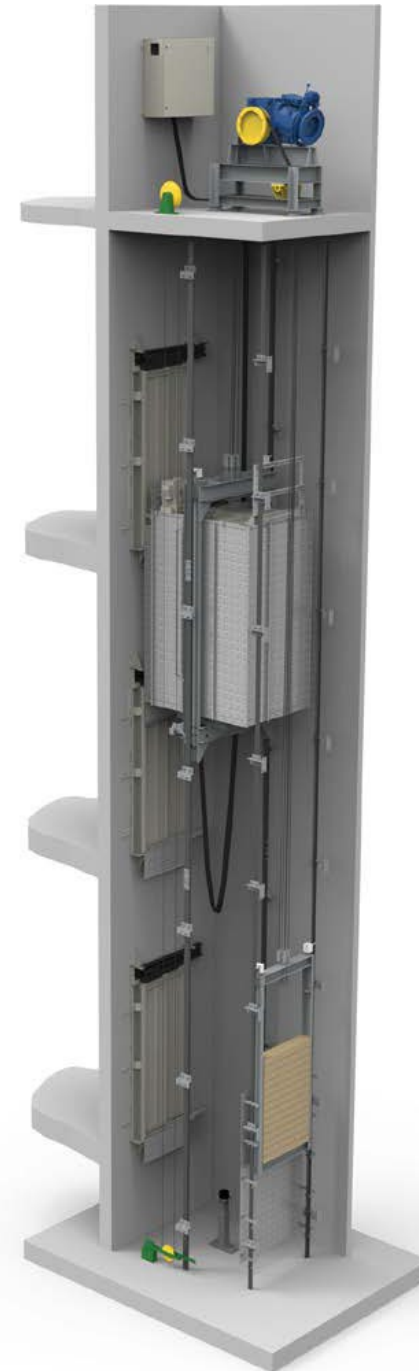
- Compliance with Directive 95/16/EC and EN 81 series of European standards
- Capacity range from 200kg up to 20.000kg
- Speed up to 2 m/sec
- Travel up to 100m
- Standard Automatic Emergency Operation

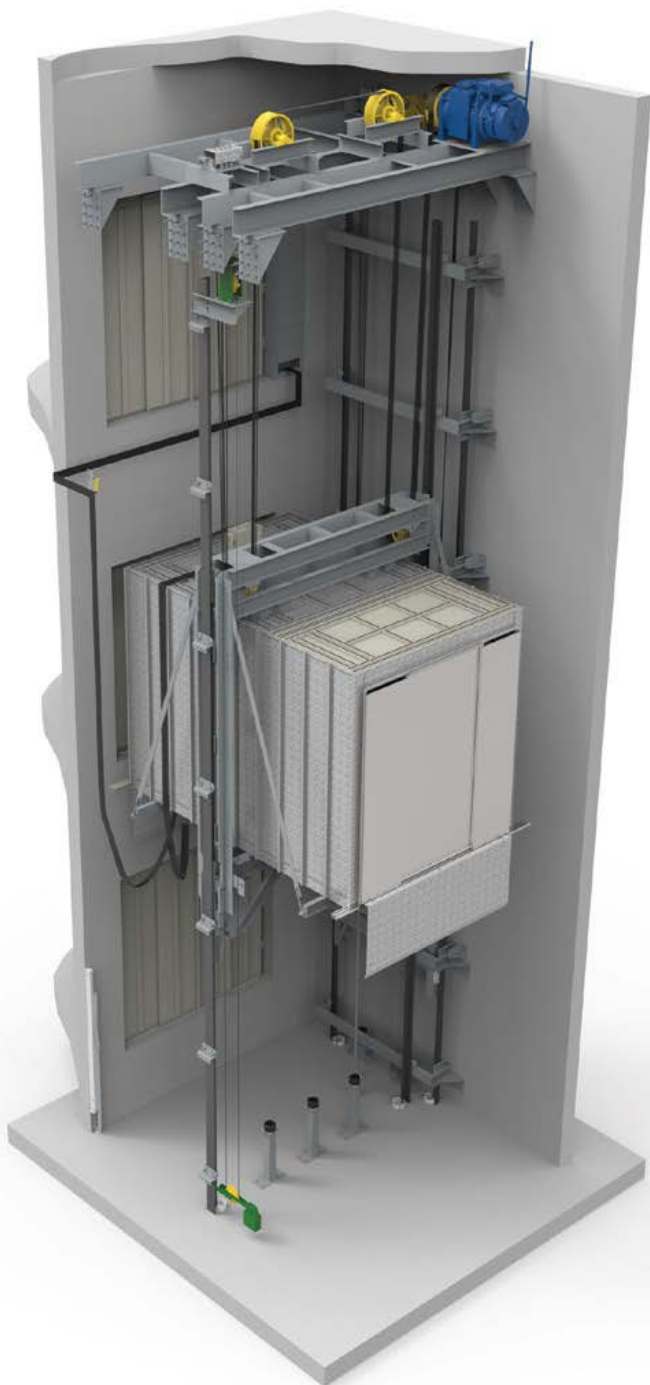
Specifications			
Rated Load (kg)	300**	1.600**	3.000***
Passengers	4	21	40
Door Type	2PT	2PT	4PC
Door Opening (mm)	700x2.000	1.100x2.000	1.700x2.000
Car Depth (mm)	900	2.400	2.900
Car Width (mm)	1.000	1.400	2.000
Shaft Depth (mm)	1.500	3.000	3.300
Shaft Width (mm)	1.450	2.100	2.800
Pit Depth (mm)	1.200	1.200	1.700
Headroom* (mm)	3.350 (1.0m/s) 3.550 (1.6m/s)	3.350 (1.0m/s) 3.550 (1.6m/s)	3.500 (1.0m/s)

\* For internal Car height 2100mm

\*\* Counterweight at back side

\*\*\* Counterweight at side





# Traction MR/MRL Cargo

## Features:

- ▶ Capacity up to 20.000kg
- ▶ Speed up to 1 m/sec
- ▶ Standard Automatic Emergency Operation
- ▶ All equipment located within the lift shaft
- ▶ Smooth and quiet driving unit situated within the head of the shaft
- ▶ Compliance with Directive 95/16/EC and European

Standards EN 81 Series

Specifications			
Rated Load (kg)	4.000	6.000	8.000
Door Type	4PC/6PC	4PC/6PC	4PC/6PC
Door Opening (mm)	1.900x2.000 2.100x2.000	2.100x2.000 2.300x2.000	2.400x2.000 2.700x2.000
Car Depth (mm)	3.200	4.000	4.600
Car Width (mm)	2.300	2.650	3.000
Shaft Depth (mm)	3.750/3.910	4.550/4.710	5.150/5.310
Shaft Width (mm)	3.100	3.450	3.900
Pit Depth (mm)	1.750	1.750	1.750
Headroom* (mm)	4.000	4.100	4.250

\* For internal Car height 2100mm



# Basic Traction MRL [1:1]

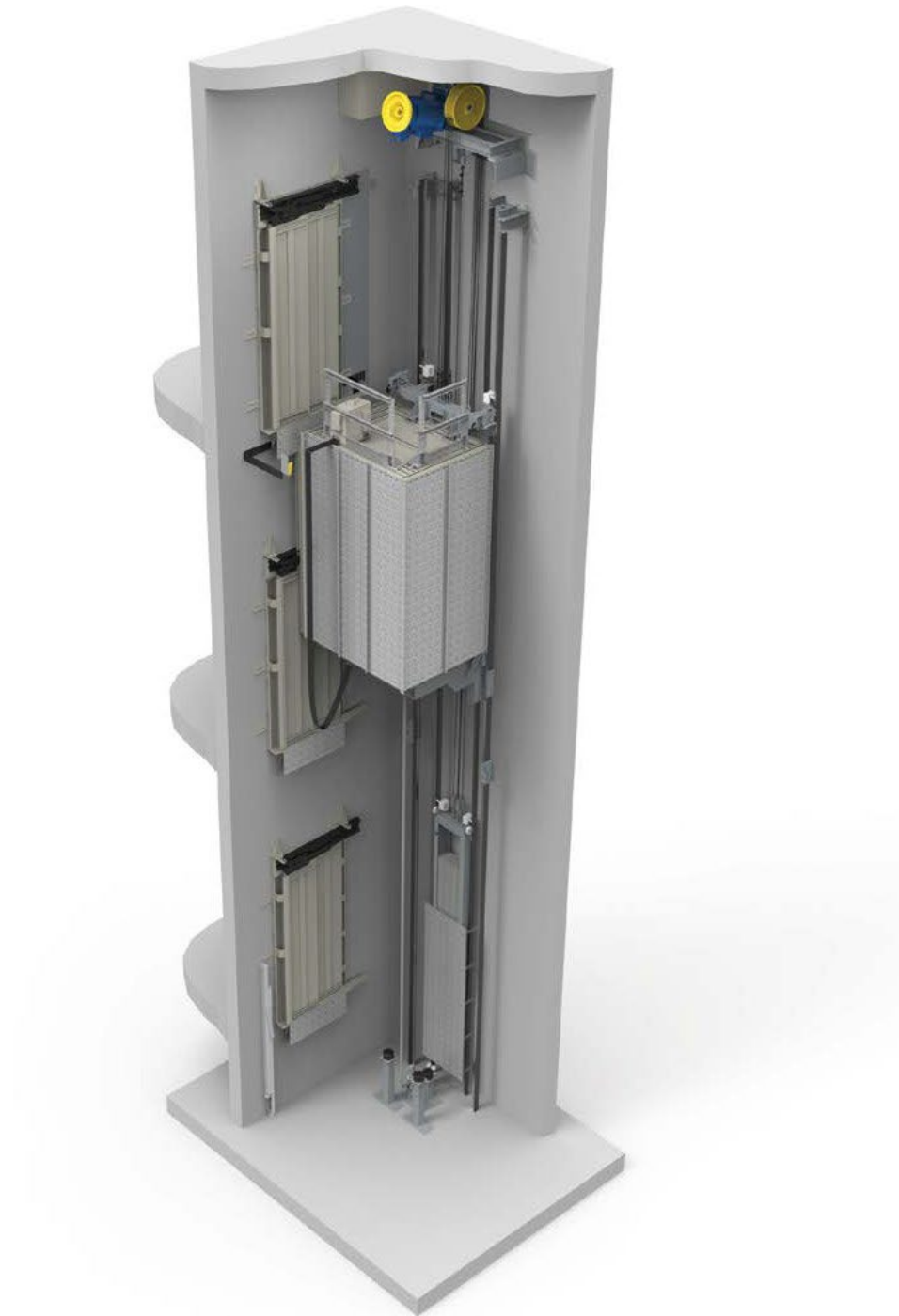
## Features:

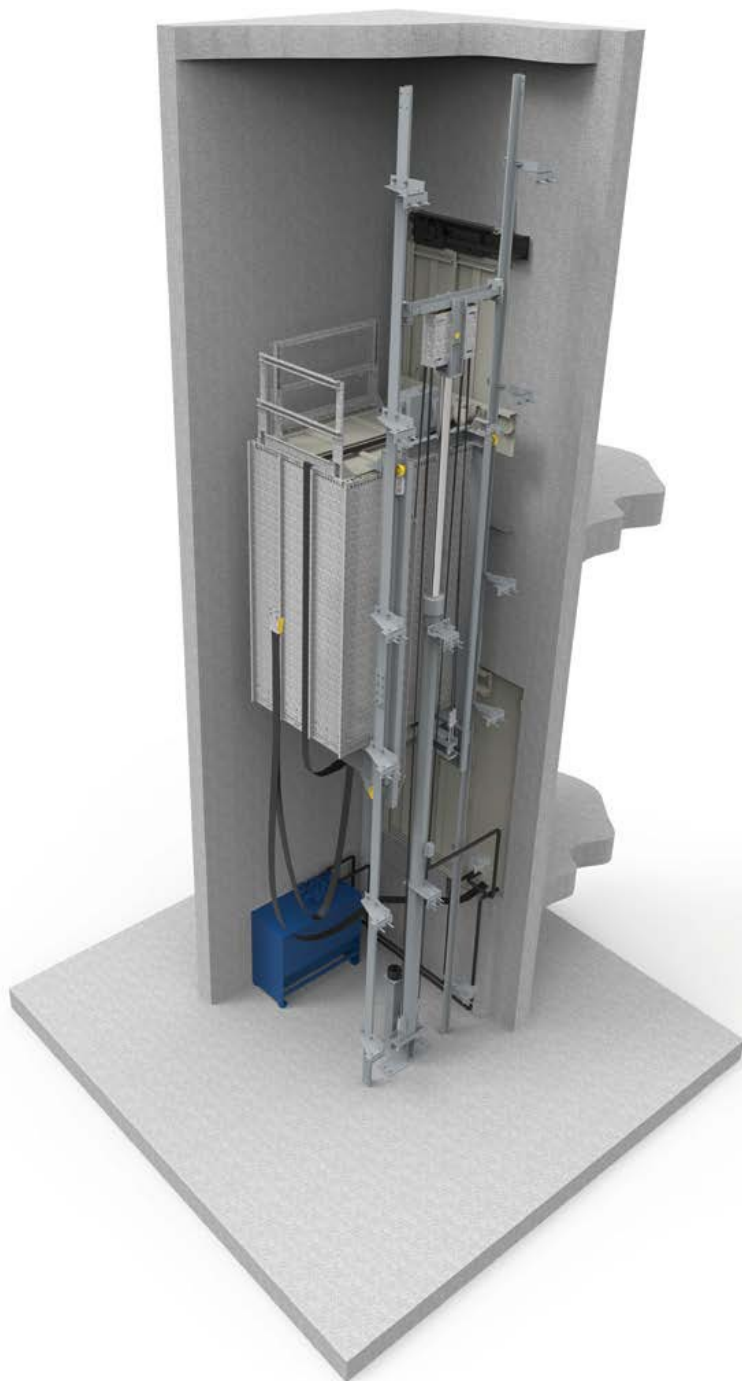
- Capacity range from 375kg up to 1.000kg
- Speed up to 1m/sec
- Standard Automatic Emergency Operation
- High efficiency VVVF geared/gearless motor
- L type car sling
- Compliance with Directive 95/16/EC and European

Standards EN 81 Series

Specifications			
Rated Load (kg)	375	630	1.000
Passengers	5	8	13
Door Type	2PT	2PT	2PT
Door Opening (mm)	700x2.000	900x2.000	1.100x2.000
Car Depth (mm)	1.200	1.400	1.600
Car Width (mm)	900	1.100	1.400
Shaft Depth (mm)	1.600	1.800	2.000
Shaft Width (mm)	1.400	1.600	1.950
Pit Depth (mm)	1.200	1.200	1.200
Headroom* (mm)	3.600	3.600	3.800

\* For internal Car height 2100mm





# Hydraulic MR/MRL Passenger Lift

## Features:

- ▶ Capacity range from 200kg up to 1.600kg
- ▶ Speed up to 1m/sec
- ▶ Travel up to 20m
- ▶ Standard Automatic Emergency Operation
- ▶ With Machine Room or without
- ▶ Compliance with Directive 95/16/EC and European

Standards EN 81 Series

Specifications				
Rated Load (kg)	225	630	1.000	1.600
Door Type	2PT	2PT	2PT	2PT
Max Door Opening (mm)	600x2.000	900x2.000	1.000x2.000	1.100x2.000
Car Depth (mm)	1.000	1.400	1.800	2.450
Car Width (mm)	700	1.100	1.300	1.400
Min Shaft Depth (mm) Single Entrance	1.400	1.800	2.200	2.850
Min Shaft Depth (mm) Through Car	1.600	2.000	2.400	3.050
Min Shaft Width (mm)	1.200	1.600	1.800	1.900
Pit Depth (mm)	1.200	1.200	1.200	1.550
Headroom* (mm)	3.350	3.350	3.350	3.350

\* For internal Car height 2100mm



# Twin Jack Indirect [1:2] Acting Hydraulic Lift

## Features:

- Compliance with Directive 95/16/EC and European

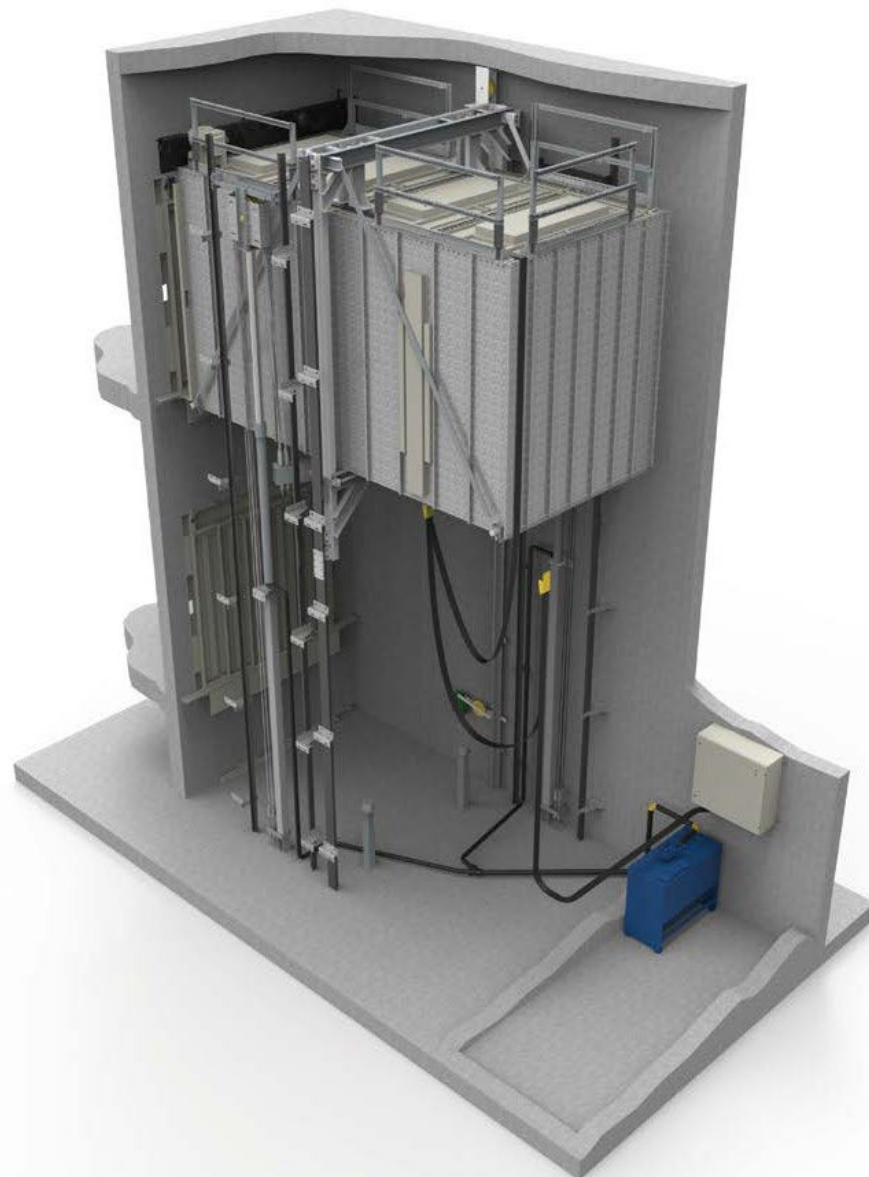
Standard EN 81-2 + A3

- Lifting Capacity up to 20.000kg
- Speed up to 0,63 m/sec
- Travel up to 18m (7 stops)
- Low noise and smooth operation
- Available with various cabin types
- Standard Automatic Emergency Operation
- Machine room at any location in relation to the lift shaft
- Double COP in case of through car arrangement

## Specifications

Rated Load (kg)	1.500	2.000	3.000
Door Type	4PC	4PC	4PC
Max Door Opening* (mm)	1.400x2.000	1.500x2.000	1.800x2.000
Car Depth (mm)	2.400	2.600	3.000
Car Width (mm)	1.400	1.600	1.900
Min Shaft Depth (mm) Single Entrance	2.800	3.000	3.400
Min Shaft Depth (mm) Through Car	2.950	3.150	3.550
Min Shaft Width (mm)	2.250	2.550	2.900
Min Pit Depth (mm)	1.200	1.200	1.200
Min Headroom* (mm)	3.300	3.300	3.300

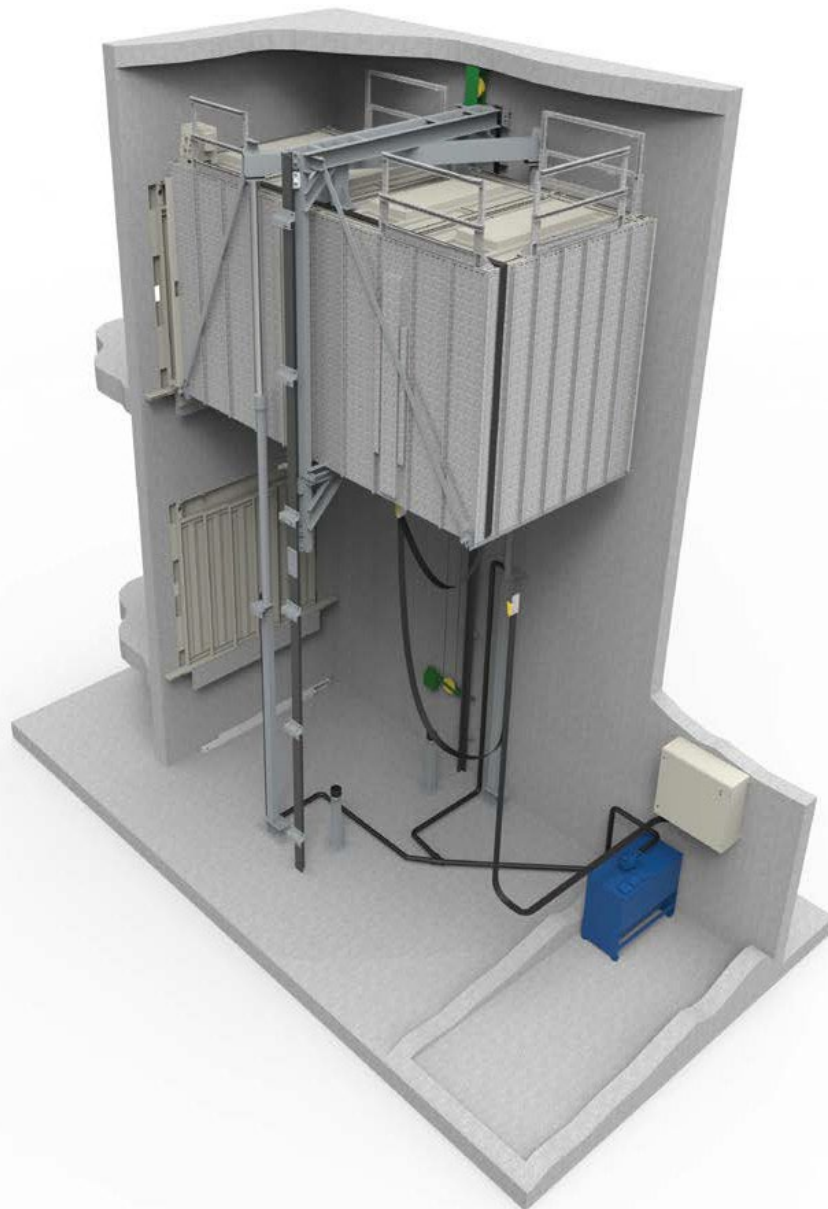
\* For internal Car height 2100mm



# Twin Jack Direct [1:1] Acting Hydraulic Lift

## Features:

- ▶ Compliance with Directive 95/16/EC and European Standard EN 81-2 + A3
- ▶ Lifting Capacity up to 20.000kg
- ▶ Speed up to 0,63 m/sec
- ▶ Travel up to 18m (7 stops)
- ▶ Low noise and smooth operation
- ▶ Available with various cabin types
- ▶ Standard Automatic Emergency Operation
- ▶ Machine room at any location in relation to the lift shaft
- ▶ Double COP in case of through car arrangement



## Specifications

Rated Load (kg)	1.500	2.000	3.000
Door Type	4PC	4PC	4PC
Max Door Opening* (mm)	1.300x2.000	1.400x2.000	1.700x2.000
Car Depth (mm)	2.400	2.600	3.000
Car Width (mm)	1.400	1.600	1.900
Min Shaft Depth (mm) Single Entrance	2.800	3.000	3.400
Min Shaft Depth (mm) Through Car	2.950	3.150	3.550
Min Shaft Width (mm)	2.100	2.400	2.750
Pit Depth (mm)	1.200	1.200	1.200
Headroom* (mm)	3.300	3.300	3.300

\* For internal Car height 2100mm



# FOCUS Range - EN81-21

## Low Pit/Headroom



**Focus LPH – Specifications EN81-21**

Rated Load (kg)	300	450	630
Max Speed	0.63 m/s	0.63m/s	0.63m/s
Passengers	4	5	8
Door Type	2PT	2PT	2PT
Door Opening (mm)	700x2.000	800x2.000	900x2.000
Car Depth (mm)	1000	1.250	1.400
Car Width (mm)	900	1.000	1.100
Shaft Depth (mm)	1.350	1.600	1.800
Shaft Width (mm)	1.400	1.500	1.600
Pit Depth (mm)	170	170	170
Headroom* (mm)	2.850	2.850	2.850



**Focus LH – Specifications EN81-21**

Rated Load (kg)	300	450	630	1000
Max Speed	1.00 m/s	1.00 m/s	1.00 m/s	1.00 m/s
Passengers	4	5	8	13
Door Type	2PT	2PT	2PT	2PT
Door Opening (mm)	700x2.000	800x2.000	900x2.000	900x2.000
Car Depth (mm)	1000	1.250	1.400	1.600
Car Width (mm)	900	1.000	1.100	1.400
Shaft Depth (mm)	1.350	1.600	1.800	1.950
Shaft Width (mm)	1.400	1.500	1.600	1.950
Pit Depth (mm)	400	400	450	475
Headroom* (mm)	2.850	2.850	2.850	2.900

### Features:

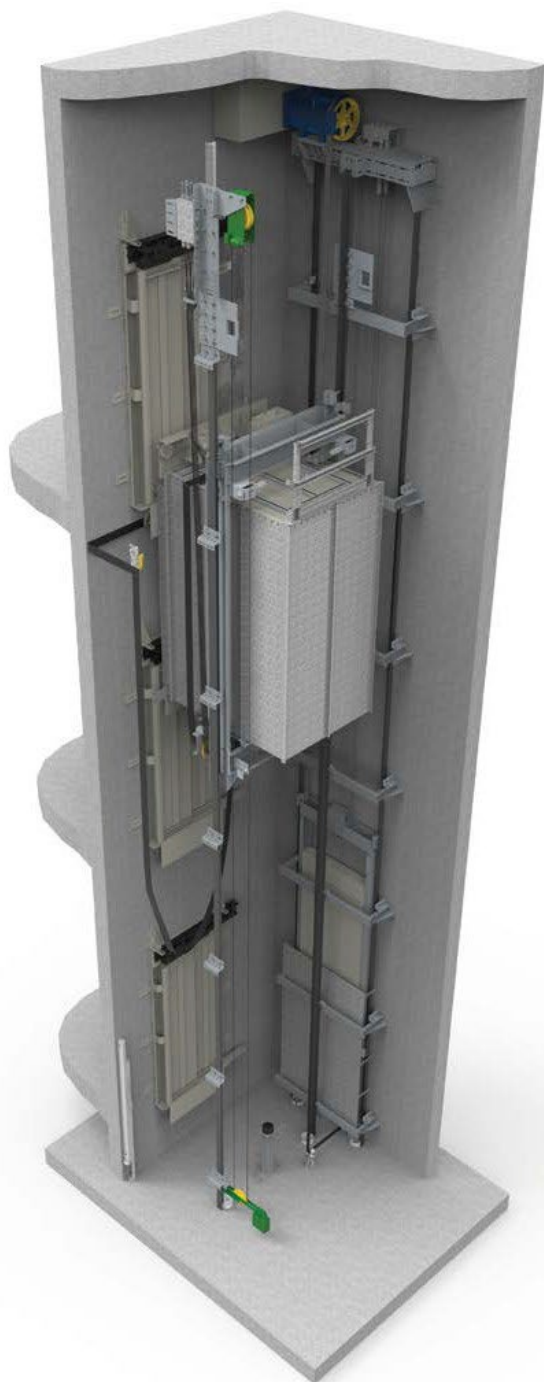
- Capacity range from 300kg up to 1.000kg
- Min Pit depth 170mm
- Min Headroom 2850mm
- Speed up to 1m/sec
- Standard Automatic Emergency Operation
- High efficiency VVVF geared/gearless motor
- L type car sling
- Compliance with Directive 95/16/EC and European

Standards EN 81 Series - EN81-21  
PASSENGER LIFTS

In existing buildings, and where a lift shaft already exists, it is possible to install a passenger lift by Acute Elevators with reduced headroom or a low/reduced pit.

To allow a lift with specification outside of EN81-20 firstly, Derogation from BEIS is required but we will assist with this, making the application process very simple

\* For internal Car height 2100mm



# Eco 2i Traction Low Pit / Headroom EN81-21

## Features:

- ▶ Capacity range from 375kg up to 2.000kg
- ▶ Speed up to 1 m/sec
- ▶ Travel up to 30m
- ▶ Standard Automatic Emergency Operation
- ▶ High efficiency VVVF gearless motor
- ▶ Frame type car sling
- ▶ Smooth and quiet driving unit
- ▶ Compliance with Directive 95/16/EC and European

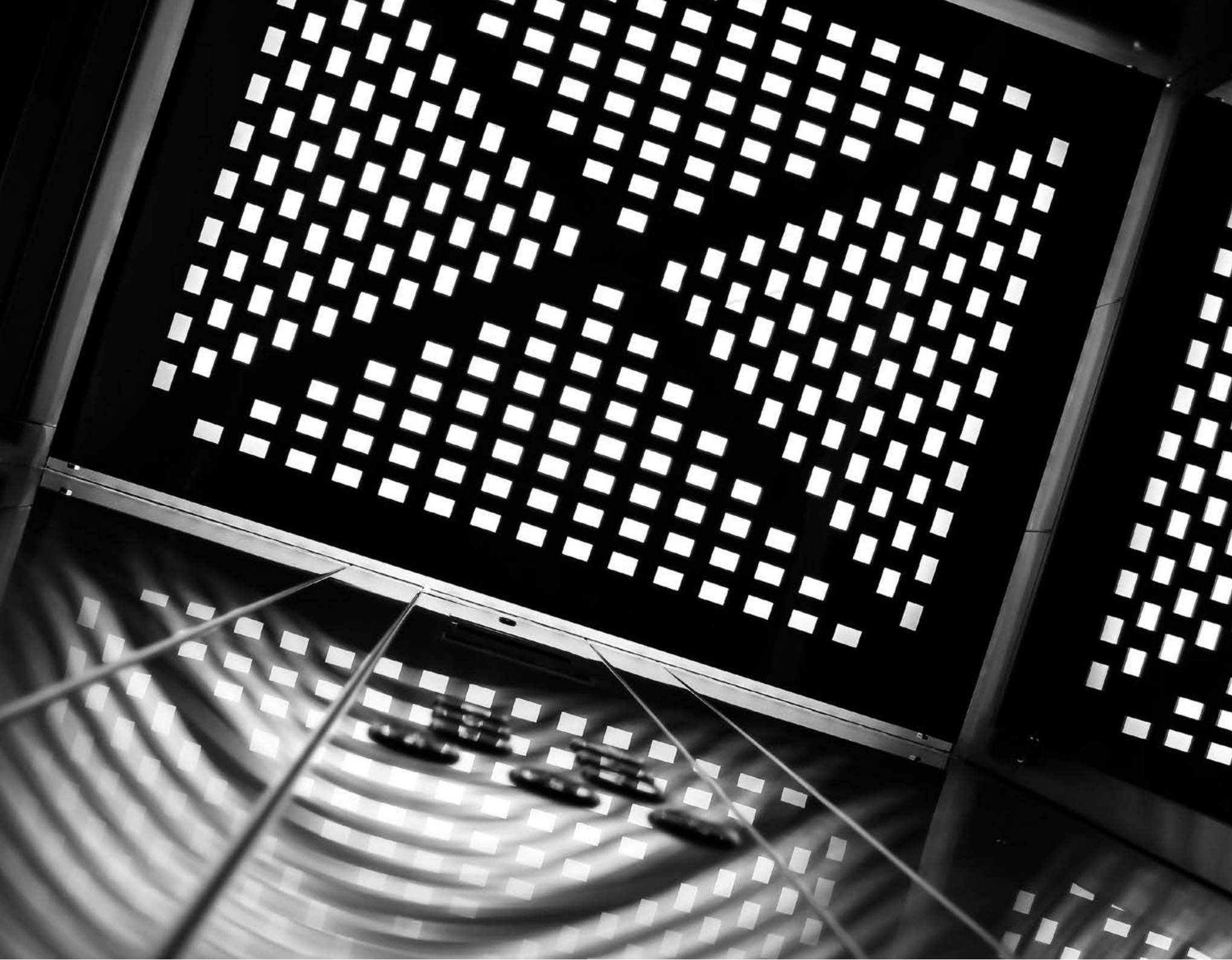
## Standards EN 81 Series

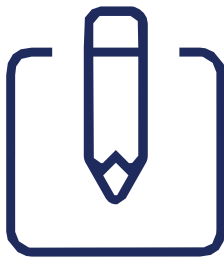
Specifications						
Rated Load (kg)	300	450	630	1.000	1.600	2.000
Passengers	4	5	8	13	21	25
Max Speed	1 m/s	1 m/s	1 m/s	1 m/s	1 m/s	1 m/s
Door Type	2PT	2PT	2PT	2PT	2PT	2PT
Door Opening (mm)	700x2.000	800x2.000	900x2.000	900x2.000	1.200x2.000	1.200x2.000
Car Depth (mm)**	1.000	1.250	1.400	2.100	2.400	2.400
Car Width (mm)	900	1.000	1.100	1.100	1.450	1.750
Shaft Depth (mm)**	1.350	1.600	1.750	2.450	2.800	2.800
Shaft Width (mm)**	1.500	1.600	1.700	1.700	2.150	2.500
Pit Depth (mm)	600	600	600	600	700	700
Headroom* (mm)	2.800	2.800	2.800	2.800	3.000	3.000

\* For internal Car height 2100mm

\*\* Single Entrance







# Accessories

Make Your Lift Unique

The details are not the details. They make the design. ► Charles Eames

Create the cabin that appeals to your style.

ACUTE offers a great range of materials and colours giving you the opportunity to create the ideal cabin for your needs.

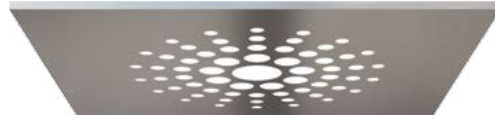
Choose among different kinds of side walls and floors and choose a fantastic false ceiling to light the cabin up. Add handrails, mirrors and operating panels to complete the interior design.

Combine granites, tiles, carpets, laminates, steel and wooden panels to lift the style up!

# False Ceilings



FC1



FC2



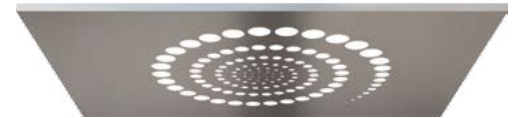
FC3



FC4



FC5



FC6



FC7



FC8



FC9



FC10



FC11



FC12



FC13



FC14



FC15





FC16



FC17

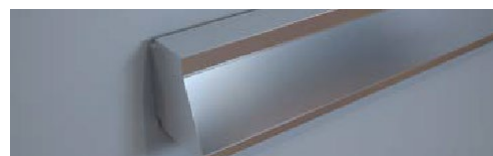
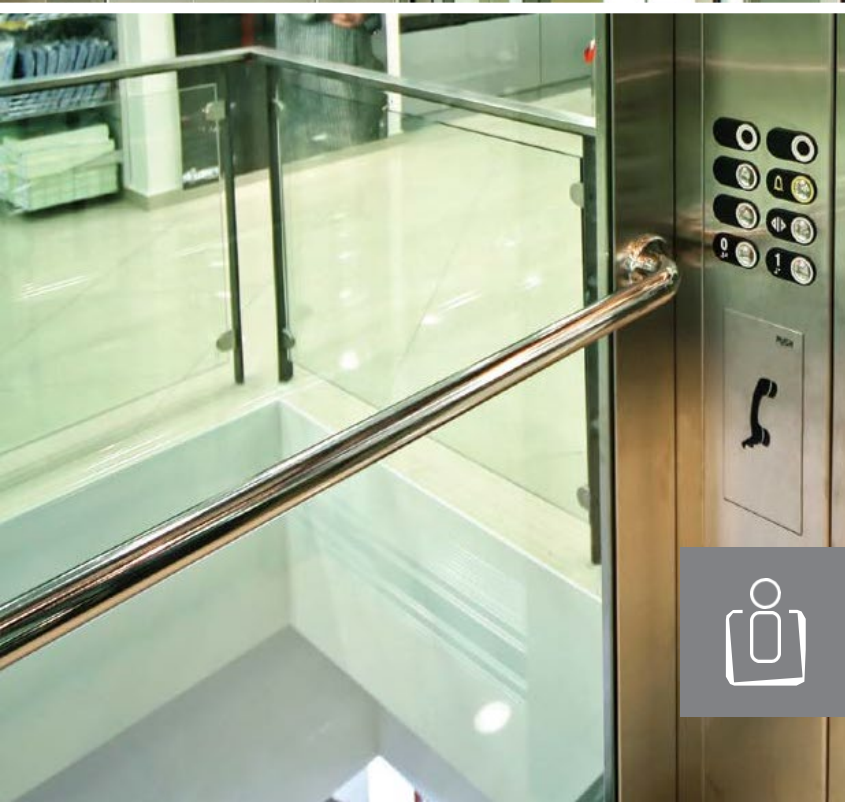


FC18



FC19

## Handrails



HR1



HR2



HR3



HR4



High resolution images can be found on our website.

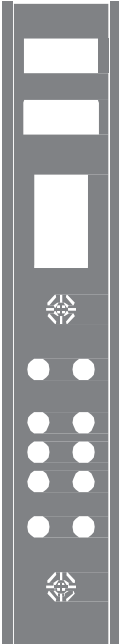

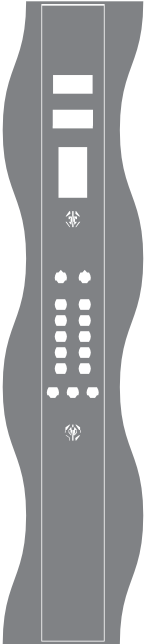
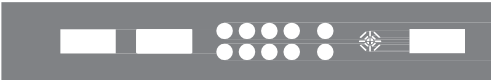
In order to view the full range of our samples contact your ACUTE Sales Representative.

# Car & Landing Operating Panels

## Landing Operating Panels

FACE PLATE WITH BOX BEHIND				
Buttons Only	Buttons + 7SEG	Buttons + Duplex 7SEG	Buttons + LCD	Buttons + Duplex LCD
				
				
WALL MOUNTED				
Buttons Only	Buttons + 7SEG	Buttons + Duplex 7SEG	Buttons + LCD	Buttons + Duplex LCD
				
				

## Car Operating Panels

Wall Mounted	Column	Wave Shaped
		
Horizontal with Handrail		
		



## Hall Lanterns

FACE PLATE WITH BOX BEHIND		WALL MOUNTED	
7SEG / LCD	7SEG / LCD with DDA	7SEG / LCD	7SEG / LCD with DDA

## DDA & Firefighting

FACE PLATE WITH BOX BEHIND		WALL MOUNTED	
DDA	Firefighting 7SEG / LCD	DDA	Firefighting 7SEG



COPs, LOPs and Hall Lanterns come with both Blue and Red signalization. Contact your ACUTE Sales Representative for more details.

[www.acute-elevators.co.uk](http://www.acute-elevators.co.uk)



# Floors

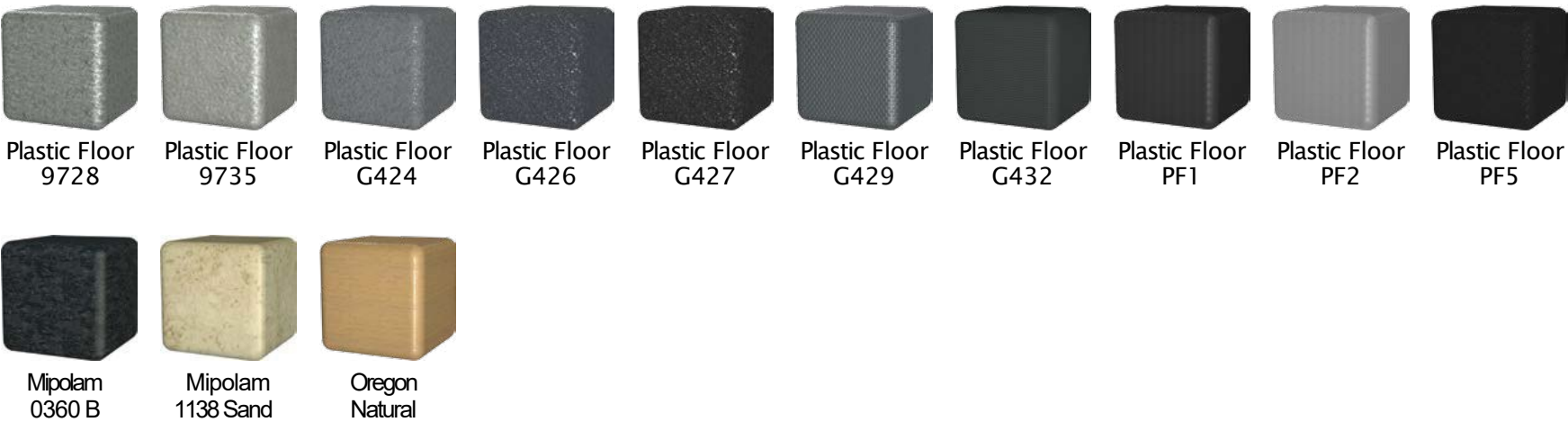
## Granites & Tiles



## Steel



## Plastic Floors





# Side Walls

## Stainless Steel



Stainless St.  
Mirror



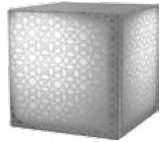
Stainless St.  
Satine



Stainless St.  
EtchSilv01



Stainless St.  
EtchSilv02



Stainless St.  
EtchSilv03



Stainless St.  
Gold Mirror



Stainless St.  
EtchGold01



Stainless St.  
Dama



Stainless St.  
Leather



Stainless St.  
Linen



Stainless St.  
Bronze Mirror



Stainless St.  
Bronze Satine



Stainless St.  
Blue Mirror



Stainless St.  
341 Blue



High resolution images can be found on our website.

In order to view the full range of our samples contact your ACUTE Sales Representative.

# Side Walls

## Laminate



Laminate  
200



Laminate  
202



Laminate  
251



Laminate  
313



Laminate  
381



Laminate  
382



Laminate  
383



Laminate  
387



Laminate  
388



Laminate  
406 Glossy



Laminate  
U1715



Laminate  
410 Lines



Laminate  
410



Laminate  
1306



Laminate  
421



Laminate  
431



Laminate  
460



Laminate  
571



Laminate  
859



Laminate  
860



Laminate  
861



Laminate  
877



Laminate  
879



Laminate  
871



Laminate  
1286



Laminate  
1304



Laminate  
1324



Laminate  
1342



Laminate  
1354



Laminate  
1379



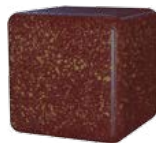
Laminate  
2199



Laminate  
5610



Laminate  
9307



Laminate  
9575



Laminate  
9834



Laminate  
AB810



Laminate  
9574



Laminate  
R5372



Laminate  
R5410 (HG)



Laminate  
P5447





## Wooden Panels



Wooden  
Panel 1599



Wooden  
Panel 6380



Wooden  
Panel 6610



Wooden  
Panel 6678



Wooden  
Panel P332

## Epoxy



Epoxy 501  
Black



Epoxy 501  
Silver



Epoxy 501  
Gold



Epoxy 501  
Bronze



Epoxy  
7032



Epoxy  
7035



Epoxy  
7042



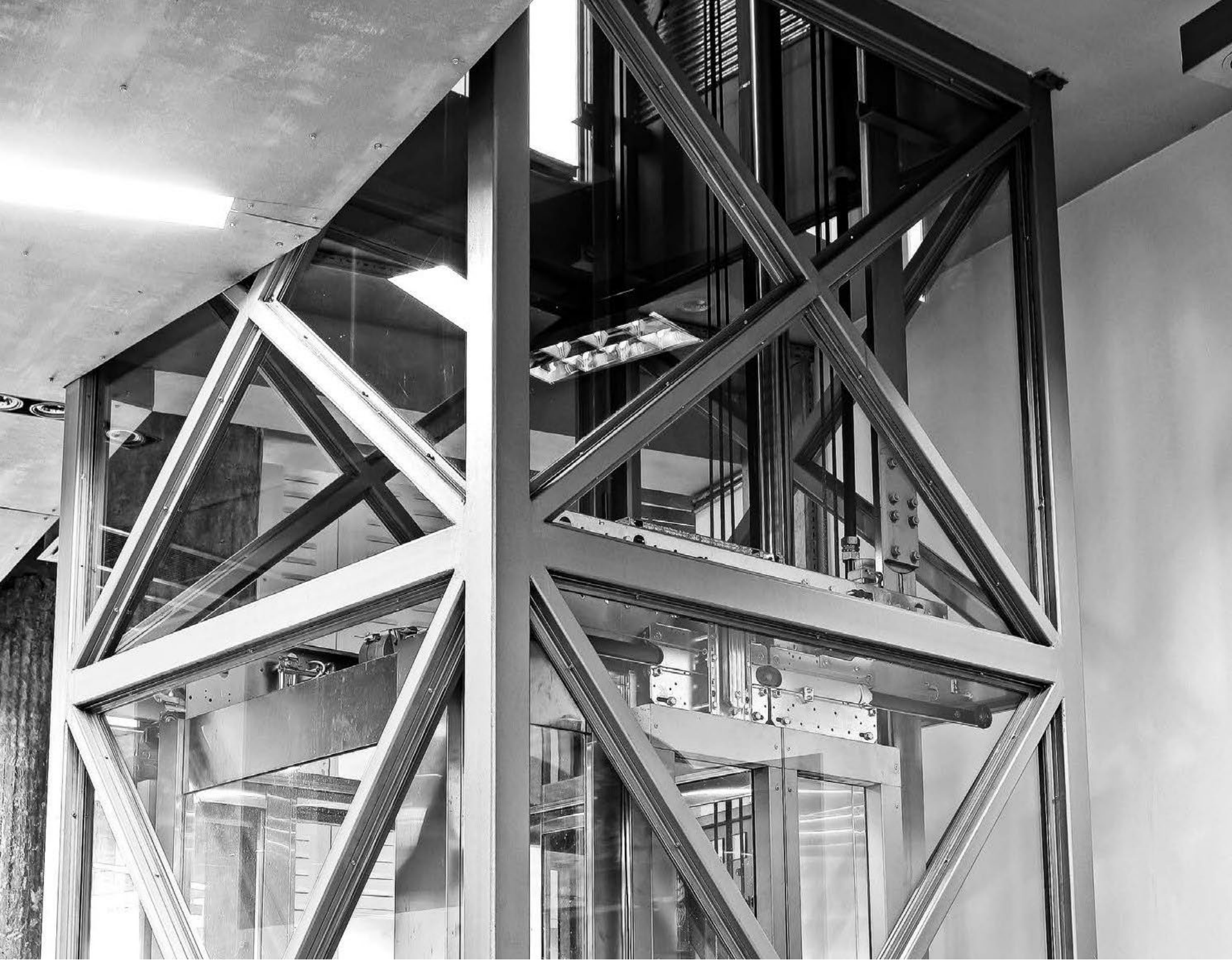
### Laminates

Due to the large stock availability of our suppliers, please double check with your Sales Representative if the selected material is still in use.

### Epoxy Paint

Except from the standard ACUTE options, you can choose a color of your likes for your cabin based on the RAL international color matching system.

In order to view the full range of our samples contact your ACUTE Sales Representative.





# Spare Parts

Every Part is Essential

A company's flexibility is shown not only with the integrated solutions of full lift systems, but also whether it can be supportive in individual cases, e.g. a renovation of a damage or old part.

Components of superior quality in a large variety (motors, ropes, pistons, power units, controllers, cabins, doors etc.), are covering with outmost safety and reliability every need.

For a greater convenience, ACUTE is currently working on an online catalogue where you can find details on any component. whether it can be supportive in individual cases, e.g. a renovation of a damage or old part.



# Modernization Kit

## Hydraulics

POWER UNIT	MOTOR	HYDRAULIC PUMP	CAR SLING	PISTON
High quality control valve block. Smooth operation with low noise levels. Standard automatic emergency operation.	Low noise, highly efficient, with integrated flywheel.	Extremely low noise level screw pump.	Stiff structure for safe operation made by ACUTE. Safety gear mechanism absolutely reliable in activation. Easy & quick installation.	High quality seal without oil leakages by HYDRONIC, OMAR & COAM. Minimum maintenance required.
				
GUIDE RAILS	PULLEY	VALVE BLOCK	SHAFT COMPONENTS	
Supplied by top quality manufacturers.	ACUTE produces the two-point suspension pulley.	BLAIN & BUCHER with a wide range of adjustments.	ACLA buffers & European made ropes.	
				



## Motors

### MOTORS

Alternative choices between double-speed or VVVF, geared or gearless. Manufactured by ACUTE, SASSI & MONTANARI. Low noise and vibration levels. Long life span.



### MOTOR BASE

Motor bases manufactured by ACUTE.

### SAFETY GEAR

Instantaneous Safety gears (ACUTE) or Progressive (Dynatech, Cobiachi)

### SPEED GOVERNOR

Speed Governors from PFB.



For the whole range of our hydraulic & traction elevator parts, contact your ACUTE Sales Representative or visit our website.

[www.acute-elevators.co.uk](http://www.acute-elevators.co.uk)

# Doors

## Automatic Sliding Car & Landing Doors



### Specifications

- ▶ Low noise, reliable & smooth operation using VVVF driven motor
- ▶ Option for automatic emergency operation
- ▶ Wide variety of choices depending on the needs of your building
- ▶ Finished in various stainless steel patterns or epoxy paint
- ▶ Glass panels with or without stainless steel frame
- ▶ Round shaped
- ▶ Easy installation
- ▶ Wide span of life with minimum maintenance
- ▶ Door locks certified according EN81 regulations
- ▶ Fire rated if required (E-120, EI-60)

## Swing Opening Landing Doors



Selected as an economic solution for both passenger and goods lifts. Entrance clearances vary from 600mm to 3.000mm, single panel or two-panels, satisfying a wide range of applications

### Distinguished for:

- ▶ Stiff and reliable structure
- ▶ Wide range of paints and finishes
- ▶ Easy installation and maintenance





## Automatic Folding Car Doors

### AUTOMATIC FOLDING CAR DOORS

The automatic folding car door is the ideal solution for lifts with swing opening landing doors. The main advantage is the small shaft width required.



### DOORKNOBS FOR SWING OPENING LANDING DOORS

Large selection of doorknobs for semi-automatic doors, to cover your needs.



Colombo Tank



MG 0381



Colombo Etro

# Electricals

## Hydraulic/Traction Lifts

### INVERTER

The GEFRAN Inverters designed for new installations and upgrades, are the ideal system for a wide range of applications, including very low rise (homelifts) or very high rise (skyscrapers).



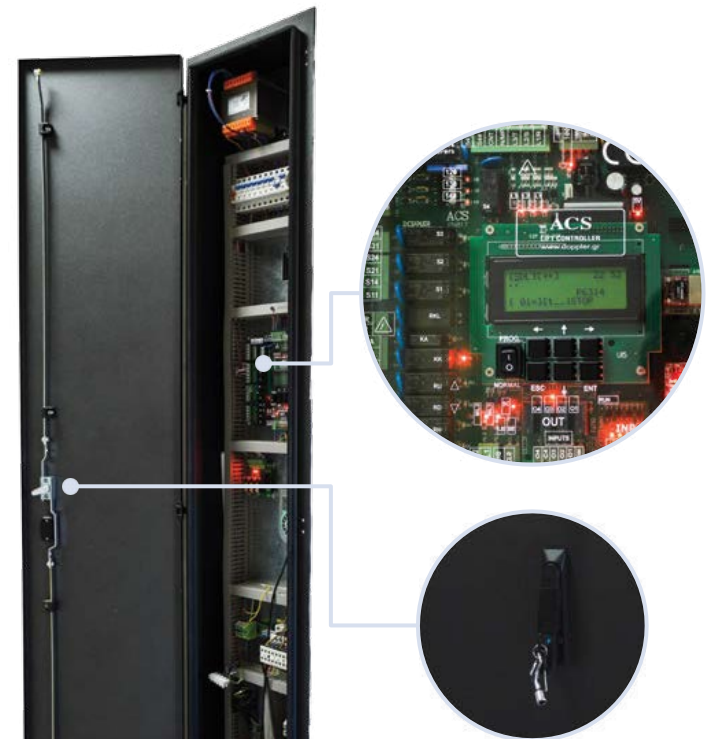
### UPS

Modified Sine Wave Output ► RS232 and USB interface  
DC Start ► Complete software monitoring system



### CONTROLLER

Suitable for Hydraulic and Traction lifts ► Up to 64 stops  
Parallel, cabin serial, cabin & landings serial communication  
Internal 3-phase and thermistor monitoring circuits ► Real-time clock & date  
Internal Door Bridging controller for hydraulic applications  
Two doors independent control ► Voice Announcer ► Emergency Rescue Operation  
In conformity with EN81-70, EN81-72 (firefighter lifts standard), EN81-73  
Special software for lift access security





## Value Added Products/Services

### RECO+ (Kinetic Energy Recovering System)

Suitable for:

Traction lifts driven by inverter ► Synchronous & Asynchronous motors ► New installations & modernizations

Standard models could be used for lift up to 1.000kg and for travel up to 70m ► Unique Emergency Rescue Function

RECO+™



### TALK2LIFT

Talk2Lift can be adjusted on the electronic board of any elevator cabin.

The cabin holds an "extra button" which upon pressing prompts the passenger to pronounce their destination.

A wide variety of facades makes it easy to match any elevator cabin.



For further details, please contact your ACUTE Sales Representative or visit our website.

[www.acute-elevators.co.uk](http://www.acute-elevators.co.uk)





# Elevating New Heights

We can create a more sustainable, cleaner and safer world by making wiser energy choices.

► Robert Alan Silverstein

Global Energy demands rise steeply every year.

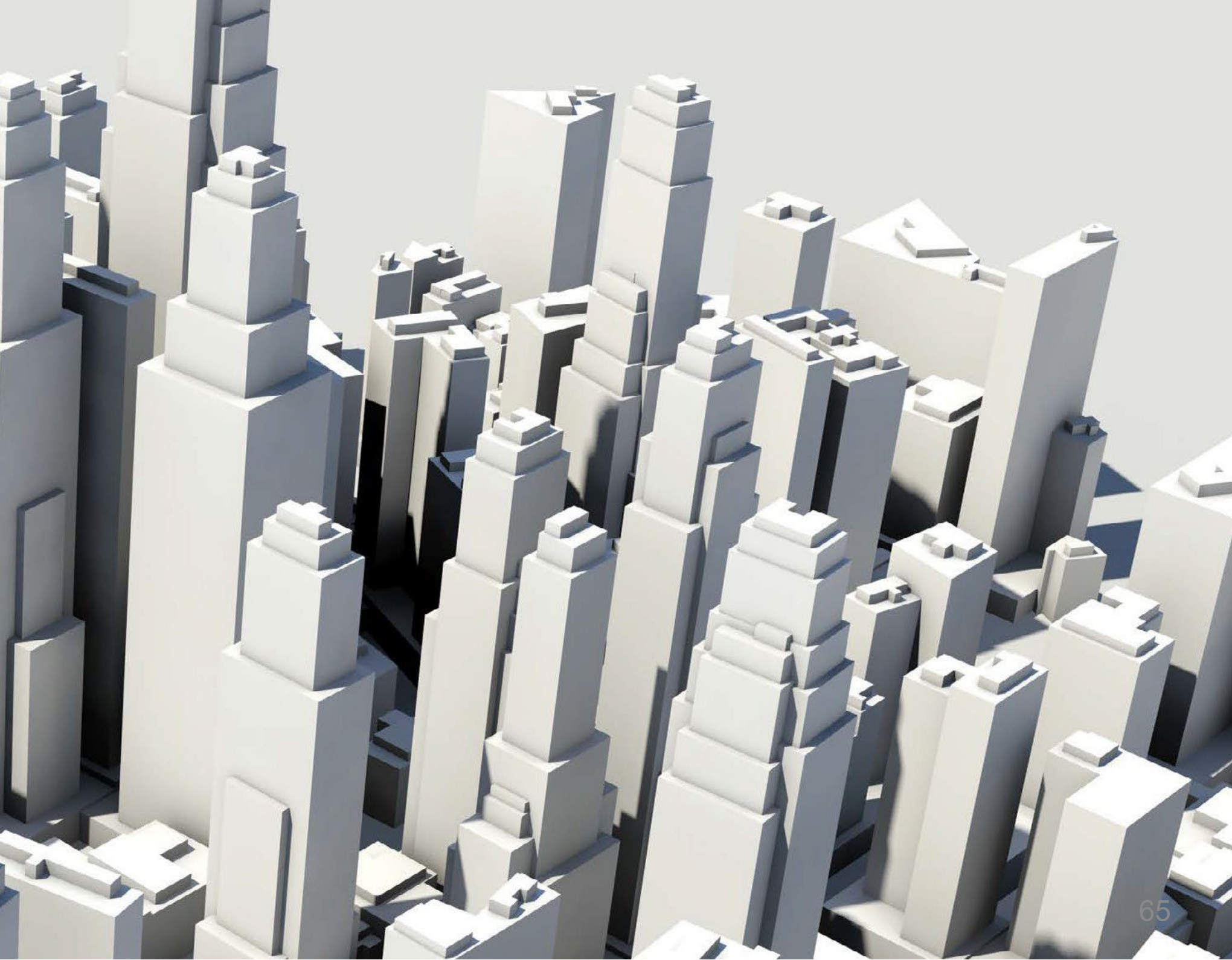
The global contribution from buildings towards energy consumption, both residential and commercial, has steadily increased reaching figures between 20% and 40% in developed countries.

Currently, about 35% of the buildings are over 50 years old. By improving the energy efficiency of buildings, we could reduce total EU energy consumption by 5% to 6% and lower CO2 emissions by about 5%.

In 2010, energy services delivered in residential and commercial buildings accounted for about one third of worldwide final energy demand.

For this reason, energy efficiency in buildings is today a prime objective for energy policy at regional, national and international levels.

Thus, ACUTE focuses on the development of eco-friendly and energy-efficient products that can lead to significant energy savings.



# ACUTE

## ELEVATORS

**Contact:**

[www.acute-elevators.co.uk](http://www.acute-elevators.co.uk)  
[info@acute-elevators.co.uk](mailto:info@acute-elevators.co.uk)  
0203 410 0495 - London  
0161 523 6299 - Manchester  
Unit 2, Space Business Centre  
Knight Road, Strood. ME2 2BF