

# ANNUAL REPORT

---

## 2018



GROWTH IN SUPPORT

1111 Research Drive, Bozeman MT 59718 | 406.995.7909 ext. 2701 | [yellowstoneclubfoundation.org](http://yellowstoneclubfoundation.org)



# ? What is YCCF ?



## The Yellowstone Club Community Foundation

partners with our community to promote arts, education, community services and conservation through two semi-annual grant cycles.

## Contact

**BRITT IDE**  
Executive Director  
britt.ide@yellowstoneclub.com

**JACQUE POERTNER**  
Associate Director  
jacque.poertner@yellowstoneclub.com

**ANNA SHIPLEY**  
Communications Coordinator  
anna.shipley@yellowstoneclub.com

1111 Research Drive, Bozeman MT 59718  
406.995.7909 ext. 2701  
yellowstoneclubfoundation.org



## Letter from our Executive Director

Thank you for your interest in and support of the Yellowstone Club Community Foundation. Our team is honored to work with you to support the Big Sky and Gallatin Valley community in Arts, Education, Community Services, Health and Conservation. We are proud of our work funding direct grants to nonprofits and funding broad community-wide projects that benefit the entire nonprofit sector, like the sponsorship of the 24-hour online Give Big Gallatin Valley. This event raised \$1.28 million from 4,700 donors, including 764 new donors, for the community's nonprofits. We are focused on funding capacity building opportunities like communications and leadership training for nonprofits to help them better serve their mission.

We also provide small sponsorships of nonprofit partner events up to big commitments, including \$150,000 to the Bozeman Sports Park to benefit the entire community with more field space. This past year, we strengthened our commitment to healthcare access for all by committing \$375,000 over two years to help fund the Big Sky Medical Center. Our support will help increase primary care provider hours—extending them into the evenings and on Saturdays to assist community employees. Hearing “thank you” from school kids, cancer survivors, food bank patrons, counselors, conservationists, health providers, river recreators and artists makes our jobs special. We could not do this work without our donors. Thank YOU for making it all possible.





## Achievements



**\$4.87** MILLION

in grants and scholarships awarded since 2010



**75** LOCAL NON-PROFITS

supported since inception, with **\$446k** awarded to **48** non-profits within the past year



**6** ANNUAL YOUTH SCHOLARSHIPS



**\$150K** GRANT

to the **Bozeman Sports Park Foundation** for soccer, lacrosse and rugby fields for kids and adults from Big Sky and Gallatin Valley



**\$375K** TWO-YEAR GRANT

to **Big Sky Medical Center** to extend care in Big Sky with an additional advanced care practitioner and expanded evening and weekend hours



**\$1.28M** RAISED IN 24 HRS

YCCF underwrote the **Give Big Gallatin Valley** online giving day where the community raised \$1.28M in 24 hours with 764 first-time nonprofit donors



**GALLATIN RIVER RESTORATION PROJECT**

**Gallatin River Task Force** completed a three-year Moose Creek restoration project on the Gallatin River with the support of YCCF



**DOWN PAYMENT ASSISTANCE PROGRAM**

YCCF seed funded a new Down Payment Assistance Program to help community workers buy a home in Big Sky



**SUBSIDIZED COMMUNICATIONS TRAINING**

Subsidized a communications training for Big Sky and Bozeman nonprofits



**MEETING & EVENT SPACE**

Continue to fund nonprofit meeting/event space with matching funds for nonprofits at **Fork & Spoon**





### **Corey C. Griffin Scholarship**

Two **\$5,000** scholarships are available to high school seniors in Gallatin Valley.

### **Rieschel STEM Scholarship**

This **\$5,000** Scholarship is awarded to a high school senior in Gallatin Valley pursuing further education in science, technology, engineering and/or math.

### **Big Bald Dave Scholarship**

YCCF is proud to honor the memory of Dave Mueller and his love for outdoor adventure by awarding an extraordinary summer adventure to one Big Sky student.

### **Friends of Big Sky Education Scholarship**

One Lone Peak High School Student receives two **\$3,000** scholarships for their freshman and sophomore years of college.

### **Montana Wilderness School Scholarship**

**\$3,000** awarded to the tuition of an underserved Gallatin County student.

### **Leadership Montana Scholarship**

YCCF provides 50% of the tuition for a local nonprofit leader to attend this program.



*Thank you for supporting our Big Sky Youth Scholarship Programs. With your help, we had a positive impact on the lives of many families in Big Sky and on the entire community. Our summer camp scholarships give working families a chance to provide a safe and enriching summer environment for their children. Our enrichment scholarships provide exposure to life changing experiences. Our winter scholarships provide our local children an opportunity to feel connected to the community and support their mental and physical health and wellbeing.*



**Jen O'Connor**  
- Women In Action





“In August 2017, we moved our packing facilities from the Community Café/Fork & Spoon to coincide with the Gallatin Valley Food Bank storage facility. This improved efficiencies and simplified our packing and delivery needs. During this period we distributed to 21 schools an average of 411 bags per week, for a total of 5,452 bags in September, October, November & December.”

**Lyra Leigh-Nedbor**  
- Gallatin Valley Food Bank KidsPack Program

## FORK & SPOON HOMESTLYE KITCHEN

Fork & Spoon offers affordable, pay-what-you-can, quality dinners in a welcoming and casual environment.

**This past spring, the Yellowstone Club Community Foundation awarded Fork & Spoon funds to offset the cost of space use and catering for hosting local nonprofits.**

**Visit:** [ForkandSpoonKitchen.org](http://ForkandSpoonKitchen.org) to view

## KIDS PACK

The Healthy KidsPack Program strives to alleviate childhood hunger by providing nutritionally balanced, kid-friendly foods to area elementary students every Friday during the school year. KidsPack is offered and accessible to every student, regardless of income.

**With our support, KidsPack reaches 900 children each week in 26 schools throughout Madison, Jefferson and Gallatin counties.**



## BIG SKY MEDICAL CENTER

Since opening in 2015, the Big Sky Medical Center has become a vital resource to the community.

**The Foundation Awarded the Bozeman Health Foundation \$375,000 to extend primary care hours in Big Sky.**

The grant extended clinic hours will be used to serve those who are not able to access Big Sky Medical Center's facilities during regular weekday hours.



## GALLATIN RIVER TASK FORCE

The Gallatin River Task Force is driven by one simple ambition ... to make sure the Gallatin River flows with clean, cold, abundant water, now and forever.

**Gallatin River Task Force receive three grants from the Foundation over the past year that all focus on preserving our favorite local river:**

- 1. Big Sky Sustainable Watershed** Stewardship Plan Implementation.
- 2. Promoting CLEAN DRAIN DRY** in the Upper Gallatin.
- 3. Big Sky Sustainability Initiative**

“This winter 4,707 people a day received our avalanche advisory. This year we taught 117 avalanche classes reaching 5,266 people. 27 volunteers accompanied us on 79 field day, totaling 528 hours.”

**Doug Chabot**  
- Gallatin National Forest Avalanche Center

## WOMEN IN ACTION

The goal of Women In Action (WIA) is to enhance and enrich the lives of children and families within our Big Sky community through a broad range of social programs that include counseling services, education programs and camp scholarship opportunities.

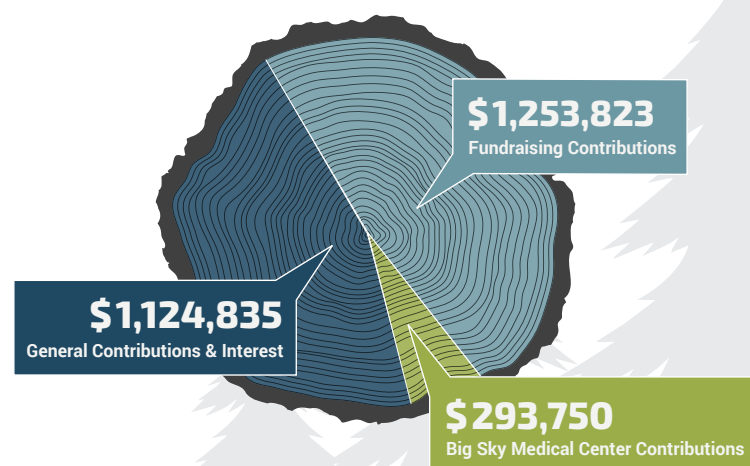
**The Foundation supports WIA through two key grants:**

- 1. Big Sky Mental Health and Behavioral Initiative** brings a Clinical Psychologist to Big Sky once a week on a sliding scale fee.
- 2. The summer and Winter Camp Scholarship** Program offers financial assistance for Big Sky youth, ages 5-17, to attend summer camps and ski programming during winter.

## TOTAL CONTRIBUTIONS

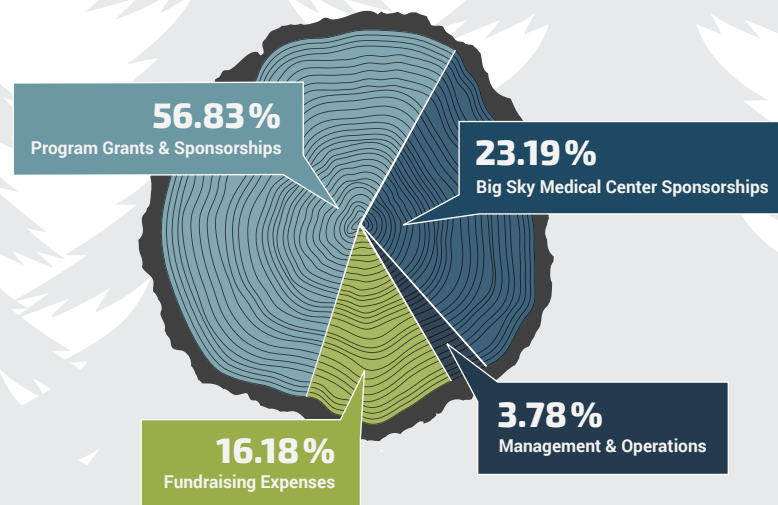
**\$2,672,408**

Total Contributions & Support



## DISTRIBUTION OF GRANTS AND EXPENSES

Total Grants & Expenses



2018 data represents the 12 month period ending 9/30/2018. IRS Form 990 is available on our website. Financials audited annually.

## Ways to Give



By Mail



Gifts of Stock or  
through your will or trust



Annual Giving



Multi-year Giving  
through the  
Black Diamond Club



Member Account



Annual  
Fundraising Events



Online at:  
[yellowstoneclubfoundation.org/donate](http://yellowstoneclubfoundation.org/donate)

## Grantee Snapshot



Please visit our website to see a full list of grantees  
[yellowstoneclubfoundation.org](http://yellowstoneclubfoundation.org)





---

## GROWTH IN SUPPORT

**ANNUAL REPORT 2018**

1111 Research Drive, Bozeman MT 59718 | 406.995.7909 ext. 2701 | [yellowstoneclubfoundation.org](http://yellowstoneclubfoundation.org)