

S2 IT GROUP

Oracle Cloud Excellence
Implementer Program



ORACLE®

Cloud Standard

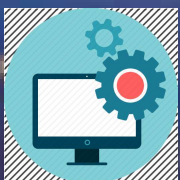
Available on

ORACLE®
Cloud Marketplace



INFORMATION BY YOU, TECHNOLOGY BY US...

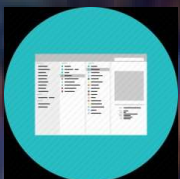
YOUR ON-SHORE IT PARTNER



IT AND CLOUD CONSULTING



SOFTWARE DEVELOPMENT



QUALITY ASSURANCE & PRODUCTION SUPPORT



CORPORATE TRAINING



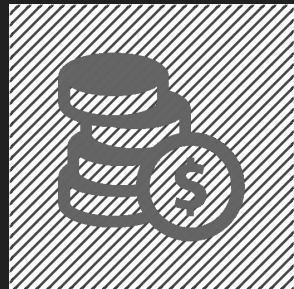


ARE THESE VALID CONCERNS

Oracle Cloud Excellence
Implementer Program



- ▶ Not having the right people on the team from start ??
- ▶ Not investing in Training and Change management ??
- ▶ Not finding the right Testing Approach ??
- ▶ Poor Planning and Not Properly Vetting Vendors ??
- ▶ No proper Delivery Model ??
- ▶ Not happy with Offshore Model ??



Information by You.

Technology by Us!

S2 IT GROUP
Your on-shore IT Partner



- ❑ S2 IT Group is a IT service provider established in 2009 and based out of Atlanta – Georgia
- ❑ S2 IT Group specializes in Oracle/Workday Applications, Quality Assurance, Production Support and Implementation of Oracle Cloud offerings
- ❑ Oracle Gold Partner, Cloud Standard Partner, Cloud Excellence Implementer
- ❑ Member of Oracle Customer Advisory board
- ❑ S2 IT Group has been listed thrice on INC500 – 2015, 2016 & 2017
- ❑ Winner at Red Herring Top 100 start ups, North America -2016
- ❑ 60+ Certified Consultants, 300+ Cloud Certification, 56 Cloud Certified Specialist
- ❑ Available on Cloud Market Place



- ENTERPRISE APPLICATION PRACTICE
- QUALITY ASSURANCE
- CORPORATE TRAINING
- ENGAGEMENT MODEL
- OUR UNIQUE APPROACH
- OUR PARTNERS
- OUR CLIENTS



A hand in a dark suit and white shirt is pointing towards a digital interface. The interface features a row of four rounded rectangular buttons. The second button from the left is highlighted with a white border and contains the text 'ENTERPRISE APPLICATIONS' in blue. The background is dark and blurred, suggesting an office or technology environment.

ENTERPRISE APPLICATIONS



ENTERPRISE APPLICATIONS

❖ ENTERPRISE APPLICATIONS - DOMAIN

- ❖ Oracle Applications, Workday and J D Edwards
 - ❖ Supply Chain Management, Manufacturing and **Financial Road mapping**
 - ❖ Assessment of current footprint
 - ❖ Application-Implementation, Upgrade & Rollouts
 - ❖ Production Support & Sustenance
 - ❖ Key role in IT Quality Assurance
 - ❖ Database upgrade

❖ SERVICES AND DIFFERENTIATOR

- ❖ Business Process & Subject Matter Expertise
 - ❖ Financials- Accounts Payable, Account Receivables , General Ledger and Fixed Assets
 - ❖ Manufacturing- Discrete, Process & Oracle Shop Floor Manufacturing, Project Manufacturing
 - ❖ Procure to Pay, Order to Cash & Quality Management
 - ❖ Inventory, Mobile Application & Warehouse Management System
 - ❖ Human Capital Management – HRMS, Payroll, Benefits
 - ❖ Enterprise Asset Management, Install Base & Mobile Field Services
 - ❖ Project Contract, Project Management, Project Billing and Costing
 - ❖ Transportation Management





ENTERPRISE CONSULTING SERVICES



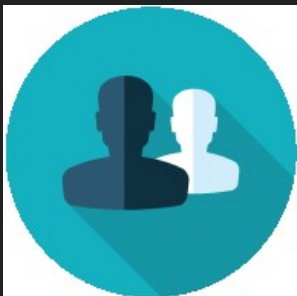
STRATEGY AND ASSESSMENT

- ❖ Oracle Workshop
- ❖ System Evaluation
- ❖ Business Case development
- ❖ Solution Road Mapping



IMPLEMENTATION, TESTING & TRAINING

- ❖ Functional Consulting
- ❖ Development [**On-site and Onshore**]
- ❖ Manual, Automated, Regression and Load Testing
- ❖ Training [Class Room and UPK training]
- ❖ Upgrades, Remote Support, Solution enhancement



BUSINESS PROCESS CONSULTING

- ❖ Supply Chain and Manufacturing Transformation
- ❖ Best Practice Adoption
- ❖ Expertise in SCM, Procure to Pay, Order to Cash, Financials, Mfg to repair (field service), Project suite and Manufacturing applications



SUPPORT, SUSTENANCE AND ENHANCEMENT POTENTIAL

IT SUPPORT / SUSTENANCE



KEY DIFFERENTIATORS



- ❖ Rollout or a Version Upgrade
- ❖ Onboarding new facility services & product
- ❖ New 3rd Party Application Integration
- ❖ Business Impact Analysis
- ❖ To-be process documentation
- ❖ Update existing documentation
- ❖ Testing QA & User Training



ENHANCEMENTS

- ❖ Design new functional requirements
- ❖ Develop new requirements
- ❖ All Database support
- ❖ Functional Enhancements
- ❖ CEMLI enhancements
- ❖ New Change requests
- ❖ Patch Application
- ❖ Instance Clone
- ❖ Code Migrations

PRODUCTION SUPPORT/SUSTENANCE



- ❖ Onsite Production Support
- ❖ On Shore Production Support
- ❖ Functional Support at Site or On Shore
- ❖ Technical Support at site or On Shore
- ❖ Patch Application, Clone and Technical Object migrations
- ❖ **Continuous Support On Oracle 11i**



QUALITY ASSURANCE

❖ Key Differentiators

- ❖ Wide range of **certified consultants**.
- ❖ **Competitive rates** to our clients.
- ❖ Two type model to suit client budget needs:
 - ❖ **ON SITE** - At client site
 - ❖ **ONSHORE** - S2 IT office at Atlanta GA
- ❖ Provides **two weeks consultants performance** guarantee at free of cost.
- ❖ **Supervise/control and monitor** all consultants work and provide guidance, training, escalate the issues on time to deliver quality of work.
- ❖ **S2IT provides resources with varied experiences based of client needs** such as Leads or Associate Consultants.
- ❖ All phases supported by COE team at site
- ❖ Co-ordinate and collaborate with clients **ON SITE teams** and develop good work atmosphere.





QUALITY ASSURANCE TESTING



- ❖ Oracle ERP/EBS, Oracle Cloud Testing
- ❖ Workday Cloud Testing
- ❖ Mobile Testing
- ❖ Automation Testing
- ❖ Web services Testing
- ❖ Performance Tester
- ❖ Regression Testing
- ❖ Integration Testing
- ❖ Functional Testing
- ❖ UAT Testing
- ❖ Production Emergency Testing
- ❖ PRE/POST Deployment Testing
- ❖ Transactional Data Validation
- ❖ Security Testing



HOW WOULD YOU BENEFIT FROM OUR QUALITY ASSURANCE???



- ❖ Enables proper utilization of Master Data and Transactional data
- ❖ Hybrid Frameworks for multiple systems and greater customization
- ❖ Identification of Business scenarios across all the modules of ERP application
- ❖ Customized Test Scenario generation
- ❖ Collaboration during Test Scripts Preparation
- ❖ Scheduled Test Script Execution
- ❖ Detailed test results with S2 IT customized reports and screen shots of key transactions of business scenarios
- ❖ Issue Resolution and Retesting
- ❖ Status reporting and bug prioritization



CORPORATE TRAINING

- ❖ Usage of **Oracle iLearning Tool**
- ❖ **QA Training**
- ❖ **UPK** for end user training
- ❖ Build corporate **training material** using Oracle iLearning – Cloud based tool
- ❖ **At Site** – Class Room Training
- ❖ Remote – **Webex based Training**



KEY DIFFERENTIATOR

- ❖ **Free Training** as part of project work
- ❖ Free training provided to **Minority, College graduate, Veterans** who are looking for career in IT space
- ❖ **Senior and certified trainers**
- ❖ Oracle **partner on cloud subscription** based iLearning tool.



A hand in a dark suit and white shirt is pointing towards a digital screen. The screen displays a horizontal row of five rounded rectangular buttons. The second button from the left is highlighted with a white border and contains the text 'ENGAGEMENT MODEL' in blue. The other buttons are grey and empty. The background is dark and out of focus.

ENGAGEMENT MODEL

ENGAGEMENT MODEL

S2 IT Group Client Engagement Model - Implementation, Quality Assurance, Production Support and Cloud Implementation

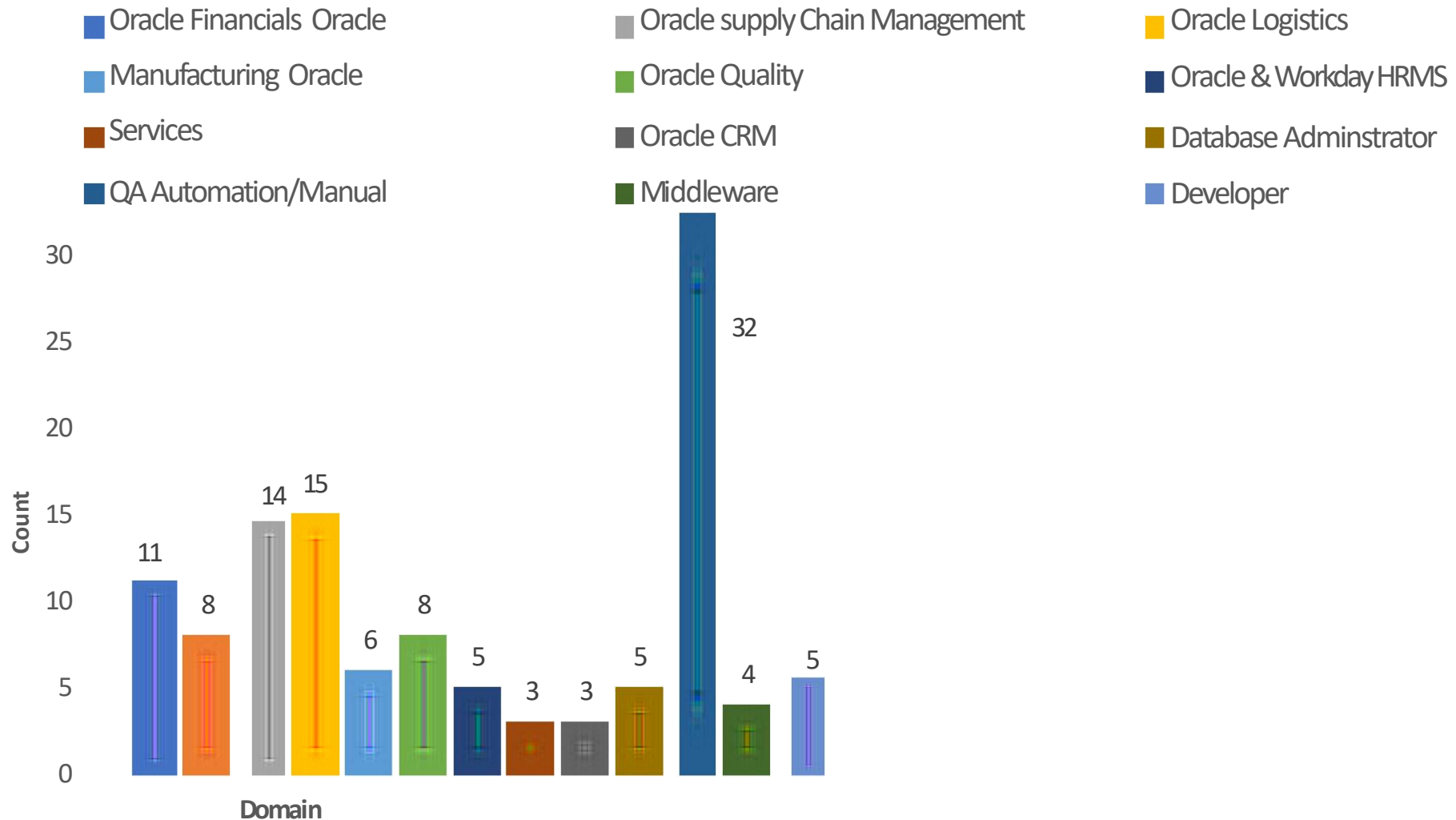
Client Team		S2 IT Group - Team	Experience
Executive Committee		Managing Partners	
Project Management Office		Client Engagement Manager	10+
Project Manager		Industry SME	15+
Business Owners	ESCALATION - DIRECT ACCESS	Senior Architect/Architect	15+
Senior Architect/Architect		Functional Lead Or Lead	10+
Functional Lead Or Lead		Technical Lead	10+
Technical Lead		Functional Analyst Or Business Analyst	8+
Functional Analyst Or Business Analyst		Developer	4+
Developer		QA Lead, Testers	32+
QA Mgr, Lead, Testers		Support Level	5+
Support Level	S2 IT Group - Center Of Excellence		

* All project - Executed either from Client Site or our Office in Atlanta

DIRECT ACCESS OF OUR LEADERSHIP AND CENTER OF EXCELLENCE

OUR EXPERIENCE AND EXPERTISE

S2 IT GROUP CONSULTANT





OUR EXPERTISE

- ❑ Oracle cloud
 - ✓ Oracle SCM Cloud
 - ✓ Oracle Financial Cloud
 - ✓ Oracle Manufacturing Cloud
 - ✓ Oracle Log Fire (WMS Cloud)
- ❑ ERP Functional and Technical Consulting
- ❑ Workday Cloud
 - ✓ HCM (HR, Benefits, Payroll, Compensation)
- ❑ Quality Assurance
 - ✓ Manual Testing
 - ✓ Automation Testing
 - ✓ Performance Testing
 - ✓ Retail Testing
- ❑ CRM(Salesforce) – Developer, Business Analyst, Admin
- ❑ Developer (Oracle, SQL, JAVA, IBM COGNO's BI, Informatica)
- ❑ Business Analyst(Non ERP)



A hand in a dark suit and white shirt is pointing towards a glowing, rectangular button with rounded corners. The button has a bright white outline and a soft, yellowish-white glow. The text "OUR UNIQUE APPROACH" is centered on the button in a blue, sans-serif font. The background is dark and out of focus, showing other similar buttons and a blurred figure of a person in the background.

OUR UNIQUE
APPROACH



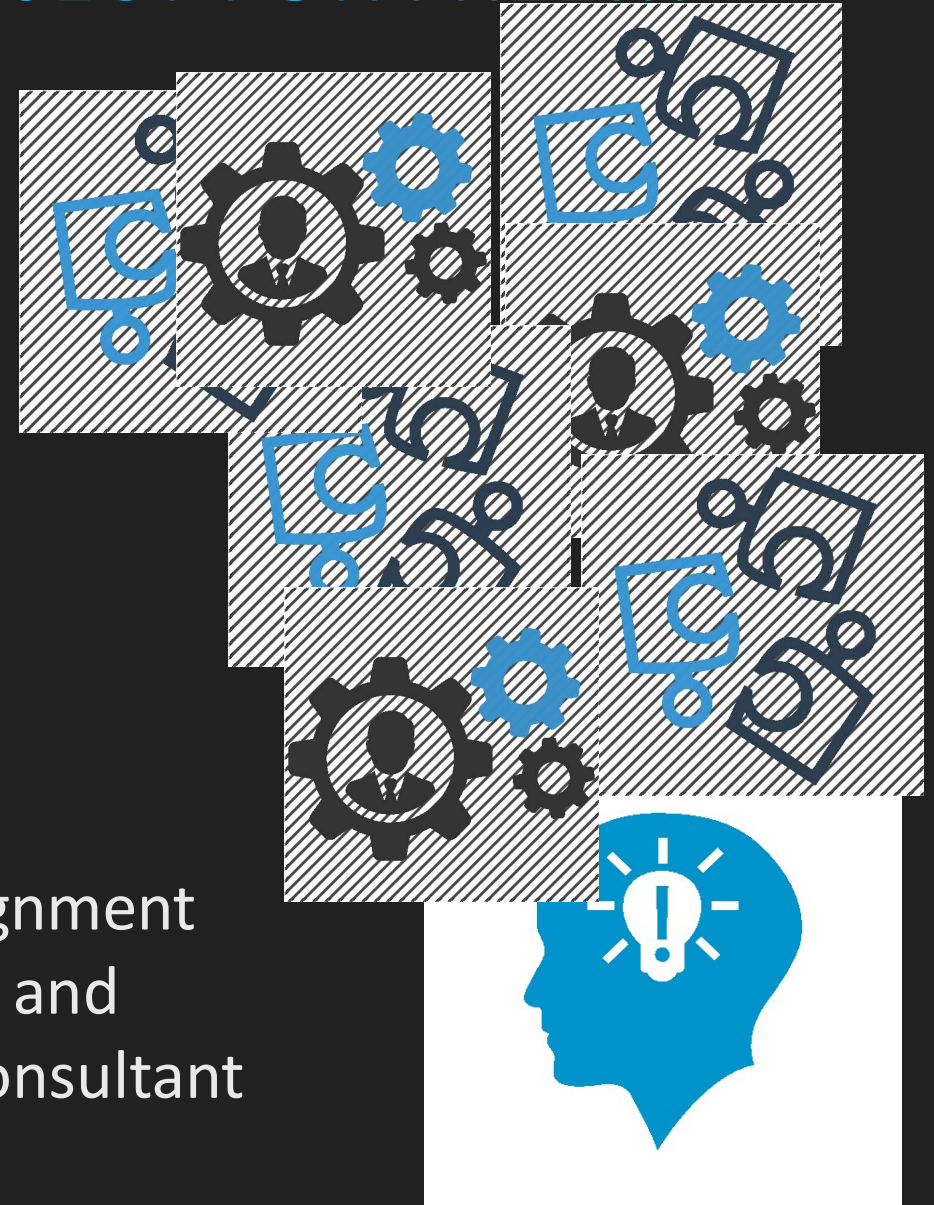
WE KICK START YOUR PROJECT FOR FREE!!!

WEEK 1

Understand overall requirement and prepare level 1 process documents

WEEK 2

Site Readiness and consultant alignment with SME with similar experience and “Staging POC” before the S2 IT Consultant join the project team



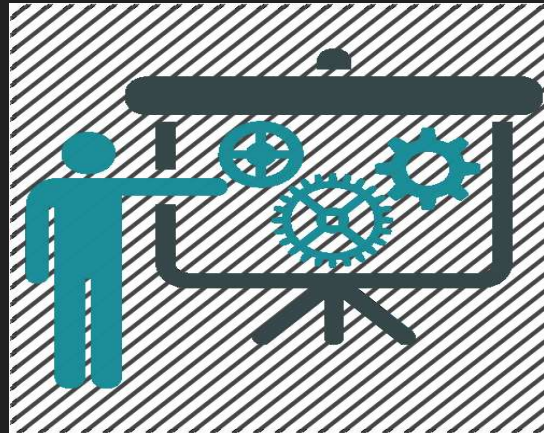


PROJECT IMPLEMENTATION METHODOLOGY



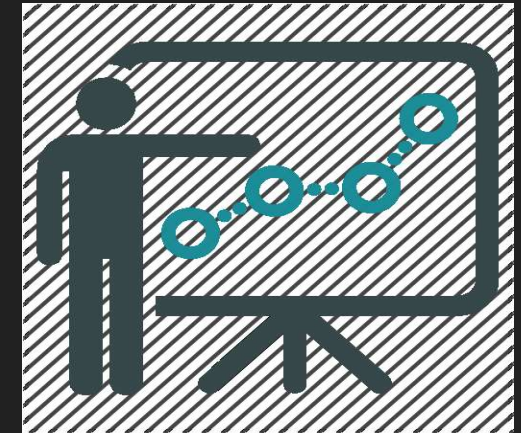
ASSESS

- ❖ Team Introduction
- ❖ Understand scope & deliverables
- ❖ Understand current application landscape
- ❖ Assess current technical architecture
- ❖ Identify current customizations and interfaces
- ❖ Understand pain areas and challenges



REVIEW

- ❖ Validate understanding with the client
- ❖ Build alternatives or options
- ❖ Discuss new features to be adopted
- ❖ Prepare a comparative analysis between old version and new version

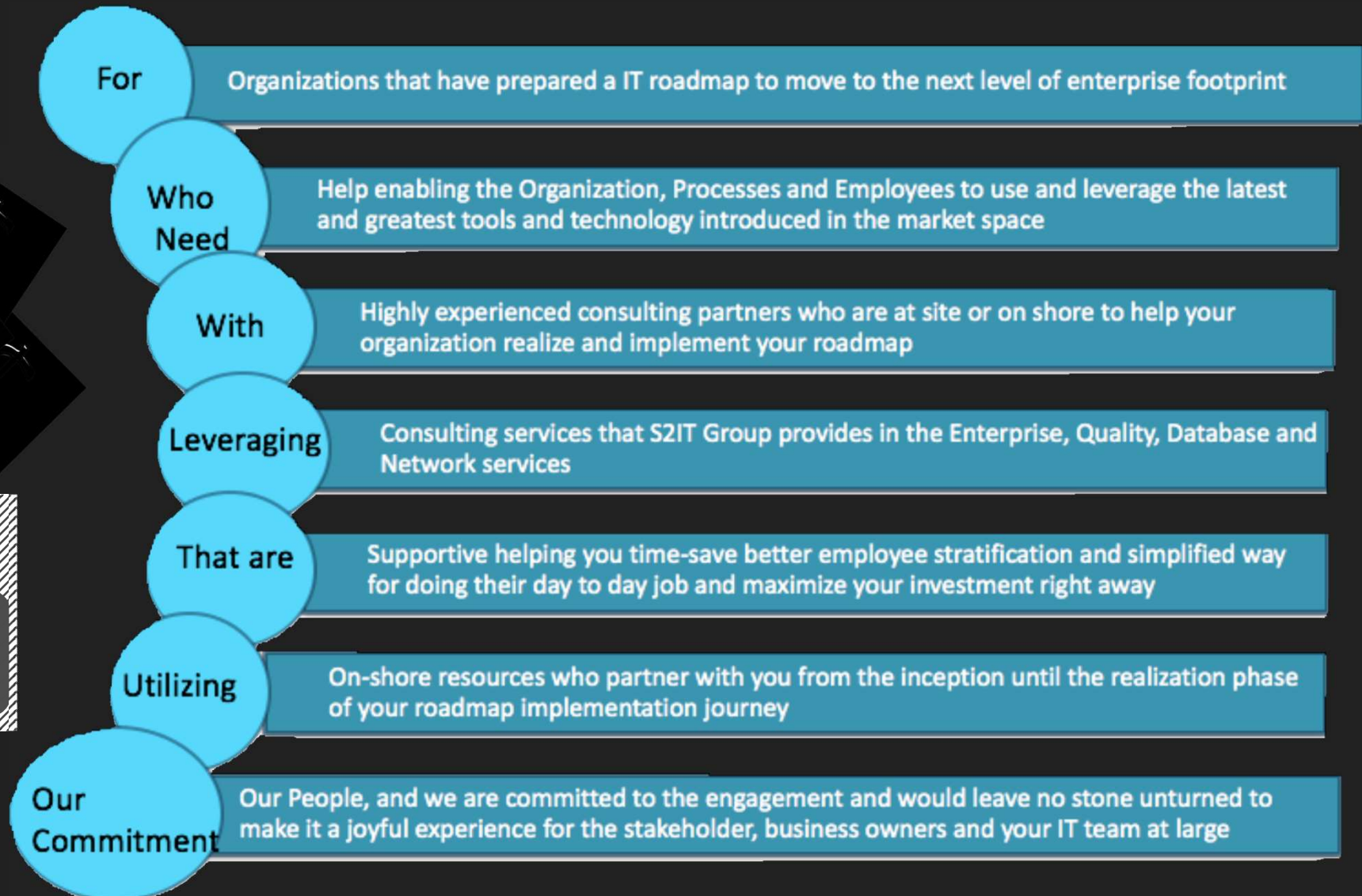


REPORT

- ❖ Document understanding with the client
- ❖ Prepare retrofit analysis
- ❖ Prepare upgrade assessment report with risks, assumptions and approach.
- ❖ Prepare high level costs and budgetary time-lines



HIGH LEVEL APPROACH





OUR DELIVERY MODEL

- ❖ Onshore / Onsite model
- ❖ Standard Processes for Project Staging
- ❖ Standard iLearning tool
- ❖ Unique methodology of Quality Assurance and Training
 - ❖ Manual Testing – 30000 hours
 - ❖ Automated Testing – 24x7 test cycle
 - ❖ Readily available processes and scripts for standard testing
 - ❖ Sanity/Smoke Testing



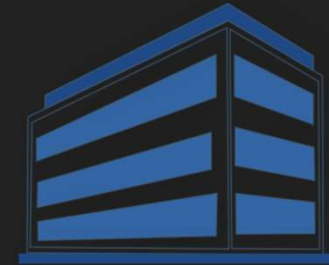


Onshore Development and delivery model



On Site Client

- Requirements Gathering & Prioritization
- Statement of Work
- Implementation sign-off & Launch Approval
- Onsite testing
- Implementation



Onshore Headquarters
In Alpharetta, GA

- Planning
- Prototyping
- Project Management
- Post Implementation Support

- Project Management
- Technical Design
- Build / Programming
- Unit/Assembly Testing
- Documentation

Post implementation support:

- Help Desk
- System. Admin.
- Maintenance
- Extension / Integration



OUR PARTNERS



OUR CLIENT LIST





ORACLE

Cloud Standard

Available on

ORACLE
Cloud Marketplace



Thank You

Information by You.

Technology by Us!



S2 IT GROUP
Your on-shore IT Partner