



Kia Tu Pakari ai Tatou

“Kia Tu Pakari ai Tatou”

SmartGrowth Combined Tangata Whenua Forum

Wednesday 30 September at 9:30am – 12:00pm

Venue: Historic Village, 17th Ave, Tauranga, Balcony Room

Karakia / Whakatau

9:30am	1. Meeting protocols	Chairperson
9:30am	2. Apologies	Chairperson

Forum Matters

9:40am	3. CTWF Governance Review (Paper A)	Tu Pakari Advisor
9:50am	4. SmartGrowth Leadership Group - Alternates (Paper B)	Chairperson
10:15am	5. Morning tea	

SmartGrowth Implementation



Kia Tu Pakari ai Tatou

10:30am	6. Iwi Māori Spatial Plan (Paper C)	Tu Pakari Advisor
10:45am	7. Western Bay of Plenty Transport System Plan – Governance Representation	Chairperson Neil Mason
11:00am	8. Combined Resource Consent Consultation Policy	Tu Pakari Advisor
Other Business		
11:30am		
Conclusion		
12:00pm	9. Key message for SmartGrowth Leadership Group	Chair
12:00pm	10. Karakia Whakamutunga	Chairperson

Future CTWF meetings

Bi-monthly meeting – TBC

If you have any questions or queries, please contact SmartGrowth on 07 579 0027 or info@smartgrowthbop.org.nz



Kia Tu Pakari ai Tatou

Combined Tangata Whenua Forum Terms of Reference

6.3 Combined Tangata Whenua Forum

Key Responsibilities:

- Have input into the development of the SmartGrowth strategies and implementation of actions from tangata whenua perspective.
- Support the implementation of the Strategy through an audit role and the provision of information and advice.
- Provide timely and effective feedback on implementation actions.
- Provide essential communication links to and from constituent iwi and hapu.
- Provide input into the appointment of a Tu Pakari Advisor in conjunction with SLG chair and CTWF chair.
- Maintain links between Treaty settlement outcomes and strategy implementation.

Form:

- Membership comprising the Tauranga Moana Tangata Whenua Collective (TCC) and iwi/hapu members of Partnership Forums (WBOPDC).
- Meet at least six times a calendar year, generally on a bi-monthly basis.
- Meet up to six times a calendar year, generally on a bi-monthly basis to workshop issues and topics of interest to SmartGrowth and the CTWF
- Meeting attendance funded in a manner consistent with TCC and WBOPDC Council policy.
- Scope for members of the CTWF to be seconded to the Committee if required to provide insight into specific issues.
- Serviced by the Tu Pakari Advisor in respect of agendas, papers, and report preparation.
- Tu Pakari Advisor shall be co-Chairperson of the CTWF, the CTWF shall elect a co-Chairperson of the CTWF and follow the elections process as CTWF members to SLG

CTWF Representation to SLG:

- Representation from the CTWF to SLG will consist of:
 - 1 member appointed by the Tauranga Moana Tangata Whenua Collective (TCC);
 - 1 member appointed by the Partnership Forums (WBOPDC);
 - 2 members elected by the CTWF; and
- CTWF representatives to SLG term will be 3 years and rotating on an annual basis starting from the:



Kia Tu Pakari ai Tatou

- local body elections confirming the Tauranga Moana Tangata Whenua Collective appointee and Partnership Forums appointee (year 1)
- longest serving CTWF elected member (year 2)
- next serving CTWF elected member (year 3)
- Appointments or elections will take place in the last calendar quarter of the year unless a SLG CTWF vacancy occurs
- Nominees for CTWF members to SLG must be a member of either the Tauranga Moana Tangata Whenua Collective or Partnership Forums
- Nominees will require the written support of one other CTWF member which must be submitted to the Tu Pakari Advisor one month prior to the scheduled meeting
- CTWF members will receive the agenda including, where provided information on the nominees
- If one nomination is received, no election will be required

Kia Tu Pakari ai Tatou:

- The CTWF will be responsible for ensuring the Rangatiratanga of the hapu and Iwi (tangata whenua values, principles, traditions and customs) are taken into account and maintained throughout the implementation of the strategy.
- The CTWF is a reference group to support the future growth related needs of hapu and Iwi.

Tangata whenua Audit:

- An audit on the implementation of the strategy by the CTWF will be a key monitoring function for tangata whenua in assessing the outcomes of the strategy.

Tangata whenua Leadership

- The collective knowledge and experience within the CTWF provides strong leadership and direction to the SmartGrowth Implementation decisions on specific and generic actions affecting tangata whenua.
- Tangata whenua will provide leadership in the implementation of some actions solely, shared as a member of the SmartGrowth Implementation Committee or as a support to other lead agencies.
- Tangata whenua engagement in the implementation and monitoring will provide confidence in the growth and development processes.

Communication and Liaison with Tangata whenua:

- The CTWF provides a regional forum for hapu, Iwi and Maori to raise implementation issues. The use of Marae and specialist workshops has proven to be an effective communication tool in engaging tangata whenua. These internal networks and techniques should be utilised to ensure that momentum



Kia Tu Pakari ai Tatou

of the strategy is maintained.

Relationships:

- CTWF participants are able to raise issues for discussion within the CTWF meetings to be taken to the SLG and other forums by the tangata whenua representative and/or the Tu Pakari Advisor.
- The CTWF is able to develop issues/ recommendations that have not been solicited by the SLG and present these to the committee.

Participation:

- The CTWF will openly debate issues, with the opportunity for all participants to contribute. All meetings are open to whanau, hapu Iwi and Maori across the sub-region.

Autonomy:

- The CTWF will consolidate and summarise all the knowledge and representations of the participating hapu and iwi.
- It is recognised that this knowledge will be based on personal/hapu and iwi values and views.
- It is acknowledged that the CTWF participants will not always agree on issues.
- Any feedback/ recommendation to the SLG will include all of the opinions and positions of the CTWF participants.
- CTWF participants will be able to present, in person, their differing views to the SLG, to ensure their position is appropriately articulated.

Communication:

- Communication between the CTWF and the SLG will be either a formal written report or presentation prepared by the Tu Pakari Advisor.
- A major focus of the communication between the two groups will be on building relationships, trust and honest interaction.

Operational Process:

- Facilitation, Independent Chair to continue in this role.
- CTWF participants own the process and operation of the group so they must contribute to the running of the process.
- Participating hapu and iwi will support each other to ensure equal opportunity to contribute.
- Open invitation for members of both the CTWF and SLG to attend each other's meetings.
- Alternate's representation is allowable.



Kia Tu Pakari ai Tatou

- Alternate must come prepared for meetings and may not propose different hapu and iwi agendas to those already raised by the usual representative. The CTWF will have access to copies of all the reports sent to the SLG.

Combined Tangata Whenua Forum [CTWF] – Membership

Members	Representation	Members	Representation
Shad Rolleston	SmartGrowth Tu Pakari Advisor	Des Tata, Peri Kohu	Te Mana O Ngai Tamarawaho Inc
Reon Tuanau, Whitiora McLeod	Ngāi Te Rangi	Tiki Bluegum	Ngāi Tamawhariua
Te Pio Kawe, Rangiwakaehu Walker	Ngāi Te Ahi	Reremanu Wihapi, Dean Flavell	Tapuika Iwi Authority
Mita Rahiri, Ngaronoa Reweti-Ngata	Ngāti Kahu	Kevin Tohiariki	Te Whanau A Tauwhao
Pia Bennett	Ngāti Mākino	Nessie Kuka	Matakana Island
Verna Ohia-Gate, Matire Duncan	Nga Potiki	Sylvia Willison	Ngai Tamarawaho
Buddy Mikaere	Ngāti Pūkenga	Julie Shepherd	Pirirakau Hapu
Wiremu Hiamoe, Rapata Rangitukunoa	Ngāti Tapu	Riki Nelson	Ngāti Te Wai
Sonny Ranapia	Ngāti Whakahemo	Manu Wihapi	Tuhourangi
	Ngāti Whakaue	Stanley Walker, Lance Waaka	Te Waka a Ngāti Ruahine
Hayden Henry, Neil Te Kani	Ngāi Tukairangi	Maru Tapsell, Archie Grant	Waitaha
Carlton Bidois	Ngāti Ranginui	Puhirake Ihaka	Tangata Whenua Collective Chairperson (Ngati Whakahemo)
Veronica Manu Seddon, Tawharangi Nuku	Ngāti Hangarau	Tania Turner	
Gail Kataraina Skerrett-White, Raewyn Bennett	Ngāti Pikiāo	SmartGrowth Partner Staff	
Pine McLeod	Ngāti He	Carlo Ellis, Keren Paekau	Tauranga City Council



Kia Tu Pakari ai Tatou

Reg Hodge	Ngāti Whakaue	Chris Nepia, Petera Tapsell	Western Bay of Plenty District Council
Dean McLeod	Ngati Kaahu	Clarke Koopu	Bay of Plenty Regional Council
Wharekonehu Tenoni	Rangiwewehi		
John Pini	Tapuika		
Nathan James, Chris Stokes	Ngati Kuku		



Kia Tu Pakari ai Tatou

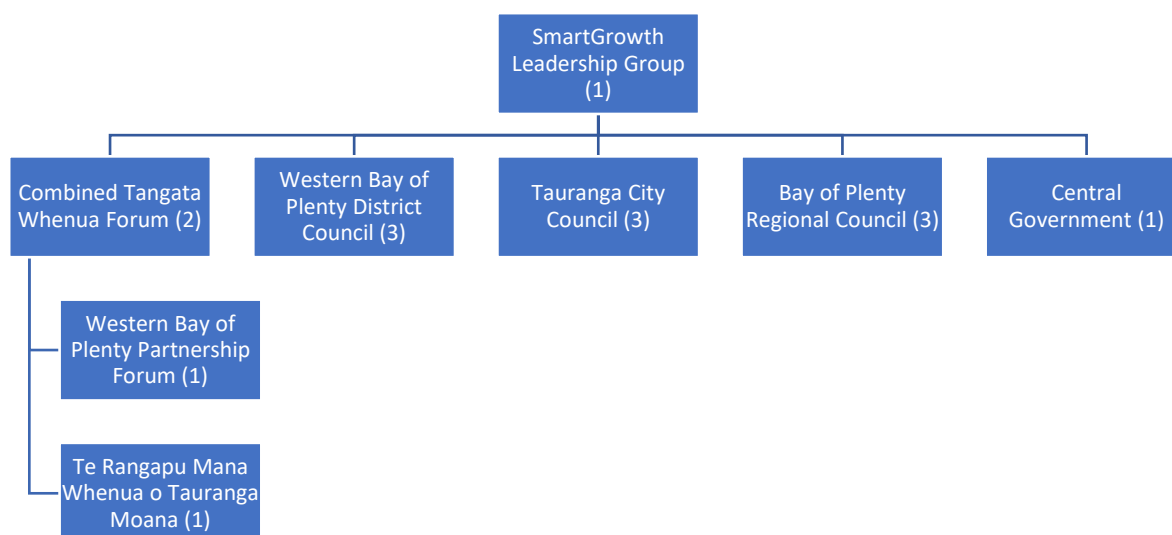
Committee Name	Combined Tangata Whenua Forum
Committee Meeting Date	30 September 2020
Author (s)	Shad Rolleston – Tu Pakari Advisor
Purpose	

SmartGrowth Governance Representation

Background to Tangata Whenua Representation

Tangata whenua participate in SmartGrowth at a governance, and management level through the Combined Tangata Whenua Forum (CTWF) and Tu Pakari Advisor. The CTWF consists of a joint forum from the Western Bay of Plenty Partnership Forum, and Te Rangapu Mana Whenua o Tauranga Moana Forum. The Tu Pakari advisor provides engagement and technical advice to the CTWF, tangata whenua governance members appointed to the SmartGrowth Leadership Group (SLG), and supports Chief Executives, Senior Managers and Council officers.

SLG is made up of three representatives from each of the Councils, one from central government, four from tangata whenua, and an independent chair. SLG make strategic decisions on behalf of the partnership which are then implemented by the individual partners. The partnership promotes consensus decision making.



Tangata whenua are currently represented on the SLG by four representatives. The Western Bay of Plenty Partnership Forum, and the Rangapu Mana Whenua o Tauranga Moana appoint one each from its membership, and the remaining two members are elected from the Combined Tangata Whenua Forum.

Representation Models

In 2019, the CTWF resolved to review governance representation for the SLG. CTWF are interested in ensuring tangata whenua are **adequately** represented at a governance level. Three options were discussed at CTWF in February, and the Tu Pakari Advisor was directed to engage further with tangata whenua on proposed governance models. The proposed governance options are:

- Status Quo –
 - Western Bay of Plenty Partnership Forum appoint one member from its membership
 - Te Rangapu Mana Whenua o Tauranga Moana appoint one member from its membership
 - CTWF elect 2 members from its membership
- Option 2
 - Western Bay of Plenty Partnership Forum appoint two members from its membership
 - Te Rangapu Mana Whenua o Tauranga Moana appoint two members from its membership
- Option 3
 - Appointments panel – an appointments panel would form to assess nominations and make appointments to SLG based on expertise and skill

Te Rangapu Mana Whenua o Tauranga Moana

The Rangapu Mana Whenua o Tauranga Moana discussed and confirmed Option 2 at their meeting 4 September 2020.

Recommendations

That Combined Tangata Whenua Forum:

1. **Note** the contents of this report;
2. **Agree** to Option 2; and
3. **Update** the Combined Tangata Whenua Forum Terms of Reference to reflect SmartGrowth Leadership Group governance appointments.



Kia Tu Pakari ai Tatou

PAPER B

Committee Name	Combined Tangata Whenua Forum
Committee Meeting Date	August 2020
Author	Shad Rolleston, Tu Pakari Advisor

SmartGrowth Leadership Group – Alternates

Background

At the March meeting of the SLG, an updated Joint Committee Agreement was put forward which allowed the Crown to join the SmartGrowth partnership at a governance level. The Agreement was approved by the SLG and referred to the partner councils for adoption. Two matters have been raised by the Bay of Plenty Regional Council:

- A provision for alternates to attend SLG meetings.
- That the Independent Chair not be given voting rights

In relation to the first matter, it has been agreed among the partners that **alternates** will be added into the Agreement. One alternate per SmartGrowth partner will be allowed for. This includes the three councils, tāngata whenua and the Crown.

In terms of the second matter, it is not possible to give effect to this request as Clause 24(2), Schedule 7 of the Local Government Act 2002 states that the chairperson or other person presiding at a meeting has a deliberative vote. This is also echoed in the standing orders of both the Tauranga City Council (which is the administrative authority for SmartGrowth). As noted previously where matters are contentious or there are differing views, these are left on the table for further discussion and report back. Having a voting chair also contributes to the quorum.

Appointment Options for Alternate

The CTWF alternate member will represent the interests of the CTWF when a full CTWF governance member is absent. Two options for appoints are suggested:

Option 1 – CTWF Chair becomes the alternate to the SLG

Option 2 – CTWF appoint an alternate to SLG

Option 2 – CTWF Appointments Process for Alternate

I suggest CTWF apply the following process to elect and appoint an alternate CTWF governance member to SLG.

- Nominees must be confirmed members of either the Western Bay of Plenty Partnership Forum or Te Rangapu Mana Whenua o Tauranga Moana;
- Nominations open DATE and close 5pm DATE;

- Nominations are to be sent to the Tu Pakari advisor in writing;
- Election will be held DATE by ballot; and
- Successful candidate will be announced concluding the election.

Recommendations

It is recommended that Combined Tangata Whenua Forum:

- 1 **Receive and note** the contents of this report;
- 2 **Discuss and confirm** the appointments Options 1 or 2 to appoint an alternate to SmartGrowth Leadership Group; and
- 3 **Update** the Combined Tangata Whenua Forum Terms of Reference to reflect SmartGrowth Leadership Group alternates appointments.



Kia Tu Pakari ai Tatou

PAPER C

Committee Name	Combined Tangata Whenua Forum
Committee Meeting Date	August 2020
Author	Shad Rolleston, Tu Pakari Advisor

Iwi Māori Spatial Plan

Background

SmartGrowth Leadership Group (SLG) resolved 1 July to prepare a subregional spatial plan to integrate the outcomes of the Urban Form Transport Initiative (UFTI), SmartGrowth strategy, and Future Development Strategy into one long term strategic spatial document for the Western Bay of Plenty sub-region.

A spatial plan sets the strategic direction for a community to form the basis for the co-ordination of decision-making, infrastructure, services and investment. It is a means of aligning council plans, as well as providing a visual illustration of the intended future location, form and mix of residential, rural and business areas, along with the critical transport and infrastructure required to service those areas and any relevant environmental constraints (for example, natural hazards).¹

Iwi Maori Spatial Layer/Plan

He Manukura led engagement with iwi, hapū and Māori landowners on input into UFTI. An outcome of the He Manukura report was consideration of an iwi spatial layer to inform broader community planning, and the preparation of a subregional spatial plan.

Scoping

In order to progress the preparation of an iwi Māori spatial layer, it would be useful to understand what might be included in such a plan. As noted above, a spatial plan sets the long term strategic direction for a community. An iwi Maori spatial layer would need to consider the issues and aspirations of the iwi Maori community, and how that might influence a subregional spatial plan.

It's the view of the current Combined Tangata Whenua Forum governance members that the CTWF provide a leadership role in preparing the iwi Maori spatial layer. In terms of next steps, the governance members suggest a technical workshop through He Manukura to scope the preparation of the iwi Maori spatial layer, to address the following questions:

¹ MfE (2010), Building Competitive Cities: Reform of the Urban and Infrastructure Planning System - A Discussion Document, p.72



Kia Tu Pakari ai Tatou

- What will be included in a iwi Maori spatial layer?
- Who will be involved?
- Who will prepare the iwi Maori spatial layer?
- What information is required to prepare the iwi Maori spatial layer
- How long will it take to prepare?
- How will the iwi Maori spatial layer inform the subregional spatial plan?
- Who owns the information and inputs to the iwi Maori spatial layer?
- How much is it going to cost?
- Who's paying for the preparation of the iwi Maori spatial layer?

Recommendations

It is recommended that Combined Tangata Whenua Forum:

- 1 **Receive and note** the contents of this report;
- 2 **Confirm** the CTWF will lead the preparation of the iwi Maori spatial layer;
- 3 **Confirm** He Manukura will workshop the preparation of a scoping document to prepare the iwi Māori spatial plan; and
- 4 **Report** back to CTWF with a clear scope of the iwi Maori spatial layer