



“ Kia Tū Pakari ai Tātou ”

SmartGrowth Combined Tāngata Whenua Forum

Tuesday 12 April 2022 – 9:30am – 12:30pm

ONLINE VIA TEAMS

Karakia / Whakatau		
Karakia tīmatanga		
1.	Apologies	Chairperson
2.	Conflicts of interest	Chairperson
Minutes and Actions		
3.	Previous minutes from 1 February 2022 <i>(Paper A)</i>	Chairperson
4.	Actions from previous meetings <i>(Paper B)</i>	Chairperson
Forum Matters		
5.	Report back from SLG <i>(Paper C)</i>	Tū Pakari Advisors / SLG representatives
6.	CTWF vision, outcomes and priorities <i>(Paper C)</i>	Tū Pakari Advisors
7.	Our approach for spatial planning <i>(Paper C)</i>	Tū Pakari Advisors
8.	Process for appointment of CTWF representatives to SLG <i>(Paper will be circulated before meeting)</i>	Tū Pakari Advisors
Guest Presentation		
9.	Proposed Change 6 (National Policy Statement Urban Development) to the Bay of Plenty Regional Policy Statement <i>(Paper D)</i>	Nassah Rolleston- Steed, Toi Moana



“ Kia Tū Pakari ai Tātou ”

Other Business	
10.	
Conclusion	
Karakia Whakamutunga	
Future Meetings	
<ul style="list-style-type: none">– 2022 Combined Tāngata Whenua Forum meetings – 21 June, 25 August, 25 October and 13 December.– 2022 SmartGrowth Leadership Group meetings – 14 June, 1 September and 29 November	
If you have any questions or queries, please contact SmartGrowth on administration@smartgrowthbop.org.nz	

Frequently Used Acronyms	
CEAG	Chief Executives Advisory Group
JSP	Joint Spatial Plan
MHUD	Ministry of Housing and Urban Development
PDA	Priority Development Areas
SLG	SmartGrowth Leadership Group
UFTI	Urban Form & Transport Initiative



“ Kia Tū Pakari ai Tātou ”

Combined Tāngata Whenua Forum [CTWF] – Membership

Combined Tāngata Whenua Forum Chair

Chair Matemoana McDonald
Deputy Chair: Des Heke

Combined Tāngata Whenua Forum Governance representatives to SmartGrowth Leadership Group

Matire Duncan, Kevin Tohiariki, Geoff Rice, Irene Walker, Matemoana McDonald (alternate)

Combined Tāngata Whenua Forum representatives from:

- Tauranga City Council – Te Rangapū Mana Whenua o Tauranga Moana
- Western Bay of Plenty District – Te Kāhui Mana Whenua o Tauranga Moana
- Western Bay of Plenty District – Te Ihu o Te Waka o Te Arawa
- Mauao Constituent Member to the Bay of Plenty Regional Council

Te Rangapū Mana Whenua o Tauranga Moana members as at 16 December 2021

Iwi/Hapū	Representative	Alternate Representative
Ngāti Ranginui		
Ngāti Ranginui Iwi Rūnanga	Des Heke Kaiawha	Destiny Leaf
Ngāti Kahu	Parewhakarau Tapuikuka (Pare Kuka)	Mokohiti Brown
Ngāti Hangarau	Veronica Manu Seddon	Tim O'Brien
Ngāi Tamarāwaho	Des Tata	Kura Martin-Tukaokao Eruera Brown
Ngāti Ruahine	Alison Flavell	Leanne Faulkner Te Arawhiti Harrison
Ngāi Te Ahi	Rangiwhakaehu Irene Walker	Rondell Reihana Te Pio Kawe
Ngai Te Rangi		
Te Rūnanga o Ngāi Te Rangi	Whitiora McLeod	Pia Bennett
Ngāti He	Anthony Ririnui	
Ngāi Tūkairangi	Hayden Henry	Kiamaia Ellis
Ngāti Kuku	Nathan James	Aroha Kopae Ngawaka Walker
Ngāti Tapu	Puhirake Ihaka	Rapata Rangitukunoa
Ngāti Kaahu	Pine McLeod	Jesse Piri Campbell
Ngā Potiki		
Ngā Pōtiki ā Tamapahore	Ropata Stephens	Verna Ohia-Gates
Ngāti Pukenga		
Ngāti Pūkenga	Buddy Mikaere	Pahu Akuhata
Te Arawa		
Te Kapu o Waitaha	Maru Tapsell	
Tapuika Iwi Authority	Rawiri Biel	Rangituohu Nathan Dean Flavell
Te Runanga o Ngāti Whakaue ki Maketu	TBC	



“ Kia Tū Pakari ai Tātou ”

Western Bay of Plenty District Partnership Forum members as at 16 December 2021

Te Kāhui Mana Whenua o Tauranga Moana	Te Ihu o Te Waka o Te Arawa
Bob Leef - Ngati Taka	Dean Flavell
Buddy Mikaere - Ngati Pukenga	Geoff Rice
Kevin Tohiariki - Te Whanau o Tauwhao ki Otawhiwhi	Manu Pene
Nessie Kuka - Ngai Tuwhiwhia	Manu Wihapi
Peri Kohu - Ngai Tamarāwaho	Maru Tapsell
Reon Tuanau - Ngai te Rangi	Petera Tapsell
Riki Nelson - Ngati te Wai	Raiha Biel
Te Uta Rolleston - Ngai Tamawhariua ki te Moutere o Matakana	Roland Kingi
Lara Burkhardt - Ngā Pōtiki	Tania Turner
Hineira Hamiona - Ngai Tamawhariua ki Te Rereatukahia	Vance Skudder
	Vivienne Robinson

Mauao Constituent Member to the Bay of Plenty Regional Council

Matemoana McDonald

Partner Organisations

Tū Pakari Advisor (Kai Ārahi)	Elva Conroy
Tū Pakari Advisor (Pou Ārahi)	Te Pio Kawe
SmartGrowth – Senior Advisor	Kelvin Norgrove
SmartGrowth – Support	Valeria Torella / Juanita Assink
Bay of Plenty Regional Council	Clarke Koopu
Western Bay of Plenty District Council	Chris Nepia
Tauranga City Council	Keren Paekau



“Kia Tū Pakari ai Tātou”

SmartGrowth Combined Tāngata Whenua Forum

Tuesday 1 February 2022

9:30am – 12:30pm

Microsoft Teams

Forum Members		
	In attendance	Matemoana McDonald - Mauao Constituent Member to Toi Moana (Bay of Plenty Regional Council) (Chairperson)
	In attendance	Des Heke - Te Rūnanga o Ngāti Ranginui (Deputy Chairperson)
	In attendance	Parewhakarau Tapuikuka (Pare Kuka) - Ngāti Kahu
	In attendance	Whitiora McLeod - Te Rūnanga o Ngāi Te Rangī
	Apologies	Rangiwhakaehu Irene Walker - Ngāi Te Ahi
	In attendance	Hayden Henry - Ngāi Tūkairangi
	In attendance	Nathan James - Ngāti Kuku
	In attendance	Puhirake Ihaka - Ngāti Tapu
	In attendance (In part)	Buddy Mikaere - Ngāti Pūkenga
	In attendance	Manu Pene - Ngāti Whakaue ki Maketu, Te Ihu o Te Waka o Te Arawa
	In attendance	Geoff Rice - Te Ihu o Te Waka o Te Arawa
	In attendance	Matire Duncan - Te Rangapū Mana Whenua o Tauranga Moana
	In attendance	Ropata Stephens – Ngā Potiki
	Apologies	Kevin Tohiariki
	In attendance	Rawiri Biel - Te Ihu o Te Waka o Te Arawa
	In attendance	Veronica Manu Seddon – Ngāti Hangarau
	Absent	Alison Flavell - Ngāti Ruahine
	Absent	Anthony Ririnui - Ngāti He
	Apologies	Pine McLeod - Ngāti Kaahu
	Absent	Maru Tapsell – Te Kapu o Waitaha
	In attendance	Rereamanu Wihapi – Te Ihu o Te Waka o Te Arawa
	Absent	Des Tata - Ngāi Tamarāwaho
Forum Alternates		
	In attendance	Destiny Leaf - Te Rūnanga o Ngāti Ranginui
	Absent	Mokohiti Brown – Ngāti Kahu
	Absent	Tim O’Brien - Ngāti Hangarau
	Absent	Kura Martin – Tukaokao Eruera Brown - Ngāi Tamarāwaho
	In attendance	Leanne Faulkner – Ngāti Ruahine / Te Wakaiti
	Absent	Te Arawhiti Harrison - Ngāti Ruahine
	Absent	Rondell Reihana - Ngāi Te Ahi
	Absent	Pia Bennett - Te Rūnanga o Ngāi Te Rangī
	Absent	Kaimaia Ellis - Ngāi Tūkairangi
	Absent	Aroha Kopae - Ngāti Kuku
	Absent	Ngawaka Walker - Ngāti Kuku
	Absent	Rapata Rangitukunoa - Ngāti Tapu
	Absent	Jesse Piri Campbell - Ngāti Kaahu
	Absent	Verna Ohia-Gates - Ngā Pōtiki ā Tamapahore
	Absent	Pahu Akuhata - Ngāti Pūkenga



“Kia Tū Pakari ai Tātou”

	Absent	Rangituohu Nathan – Tapuika Iwi Authority
	Absent	Dean Flavell – Tapuika Iwi Authority
SmartGrowth		
	In attendance	Peter Winder – SmartGrowth Independent Chair
	In attendance	Kelvin Norgrove – SmartGrowth Strategic Advisor
	In attendance	Te Pio Kawe – Pou Arahi Strategic Advisor / Ngāi Te Ahi (Alternate)
	In attendance	Elva Conroy – Kai Arahi Technical Advisor
	In attendance	Juanita Assink – SmartGrowth Support
Partner Staff		
	In attendance	Clarke Koopu – Bay of Plenty Regional Council
	Apologies	Rachael Davie – Western Bay of Plenty District Council
	Absent	Chris Nepia – Western Bay of Plenty District Council
	In attendance	Merehine Waiari – Western Bay of Plenty District Council
	In attendance	Corey Stevens – Western Bay of Plenty District Council
	Absent	Ben Wilson – Western Bay of Plenty District Council
	In attendance	Keren Paekau – Tauranga City Council
	In attendance	Nikaelah Tukaki – Tauranga City Council
	In attendance	Cynthia Hamel – Tauranga City Council
	In attendance	Rawiri Bhana – Bay of Plenty Regional Council
Observers / Guest Speakers)		
	In attendance	Piatarahi Bennett (Guest Speaker) – Project lead of Tauranga Moana ko WAI mātou programme
	In attendance	Merehine Waiari (observer)
	In attendance	Mark Batchelor – Planning Manager, CKL



“Kia Tū Pakari ai Tātou”

Opening Karakia (Te Pio Kawe)

Item 2 – Apologies

Apologies received from Adam Fort, Dr. Wayne Beilby, Jesse Campbell, Pine McLeod.

Whitiora McLeod requested the call etiquette be amended to request the Chair to identify each spokesperson by their Iwi / Hapū name and be minuted accordingly.

Moved: *Te Rūnanga o Ngāi Te Rangī (Whitiora McLeod)*

Seconded: *Ngāti Hangarau (Veronica Seddon)*

Item 3 – Conflicts of Interest

- No conflicts of interest recorded.

Moved: *Te Rūnanga o Ngāi Te Rangī (Whitiora McLeod)*

Seconded: *Ngāti Hangarau (Veronica Seddon)*

Item 4 – Previous Minutes – 8 December 2022 (Paper A)

The minutes were taken as read. The minutes of the previous held 8 December 2022 meeting were accepted as a true and correct record.

Matters Arising:

Te Rūnanga o Ngāi Te Rangī – Whitiora McLeod

- Concerned about recent change of Irene Walker as alternate to SLG. Issue parked until Terms of Reference discussion. Page 11 – Item 9 – Engagement approaches for spatial planning & Māori Housing Aspirations – would like to discuss re land trusts, maybe structure like a land trust forum who meets 5-6 times per annum. Te Pio noted that there are numerous existing forums under Te Rangapū, Housing Action Plan and Ara Rau Tangata.
- Page 16 – **Transport System Plan** primary outcomes – **a lot of focus on** technical perspective rather than social **and** cultural **aspects**. On pretext of co-designing as partners, in the primary outcomes there should be both a social and cultural outcome, not solely technical. This highlights what we have compromised to enable the development of the city. Te Pio Kawe requested Whitiora McLeod raise these with Buddy Mikaere to receive his feedback as to how cultural, social bottom lines will be represented as well as requesting this of future presenters to cover off.

The Chair noted the points raised by Whitiora McLeod to be considered for raising at the SmartGrowth Leadership Group.

Moved: *Ngāi Tūkairangi (Hayden Henry)*

Seconded: *Te Rūnanga o Ngāti Ranginui (Des Heke)*



“Kia Tū Pakari ai Tātou”

Item 5 - Previous Actions (Paper B)

- A specific action table summarising all actions along with progress update to enable members to be aware for information purposes with majority of actions are pending / in progress.
- Communications and Engagement plan to be tabled at April hui.
- Working closely with TCC and Western Bay to ensure mandated reps with each forums are current.
- Terms of Reference included on today's agenda.

Feedback:

- Te Rūnanga o Ngāi Te Rangi (Whitiara McLeod) requested adding to action list the development of an engagement process for Māori Land Trusts (MLT). It was noted that the Tu Pakari Advisors have been engaging on Māori Land Trusts, utilising a survey to register MLT blocks. From the 13 MLT's who have registered, 2-3 have requested assistance to move applications forward.
- Te Rūnanga o Ngāti Ranginui (Des Heke) – in respect to korero, agree with Te Pio in part about taking on another mechanism or forum, need to be cognisant as to what is happening. Ensure necessary policy guidance around engagement is provided to the Councils as core relationship is between local government planning and Tāngata Whenua, Māori landowners. Individual MLT's are not well represented. Tend as a collective to miss as engagement policies are so Iwi/hapū centric, that engagement is missed with MLT's.

As an iwi rep, Des finds difficult to advocate for MLT's when not wearing that hat when engagement hasn't occurred.

- The Chair noted need to remind ourselves of the purpose of the CTWF, we cannot be the “be all and end all” that we would like to be. This Forum is a governance committee dealing with high level, notwithstanding we need to be aware of what is happening at grass roots level.

ACTION: Whitiara McLeod and Te Pio Kawe to continue to liaise, along with other members in regard to engagement with Māori Land Trusts.

Item 6 – Tauranga Moana ko Wai Mātou Programme

- The CTWF received a presentation from Pia Bennett – Ko Wai Mātou! Overview and update on Tauranga Moana Wai Projects and NPSFM Implementation Action Plan.
- It was noted that the SmartGrowth CTWF supports and advocates on the mahi presented.
- Elva thanked Pia and team for leading such a large work programme.

Question & Answers

- For a lot of us, we are involved in projects with timeframes set by others with minimal funding & capacity – what advice can you give for those facing similar challenges?
- Challenges won't go away anytime soon, what inspires me to keep going is complete focus on the kaupapa. Unable to leave this space as all I want to which inspires me to keep going, whether funding available or not. Remain persistent.



“Kia Tū Pakari ai Tātou”

- When first took this on, met with Ngati Rangi and took some tautoko – maybe chance for more tautoko from CTWF iwi/hapū members to provide more support and contribute to the kaupapa.
- Further acknowledgement of the presentation by CTWF members. Covered every aspect of Māori values particularly Kaitiakitanga and Whānaungatanga.
- In response to a question about who she represents, Pia noted that she works for Te Rūnanga o Ngāi Te Rangi but isn't representing any particular Iwi or hapū for this project. She is working on a project on behalf of Tauranga Moana Iwi and hapū.
- Te Pio added his support to the kaupapa, how we incorporate supporting actions within the SmartGrowth strategy that support the Kaupapa we have heard.

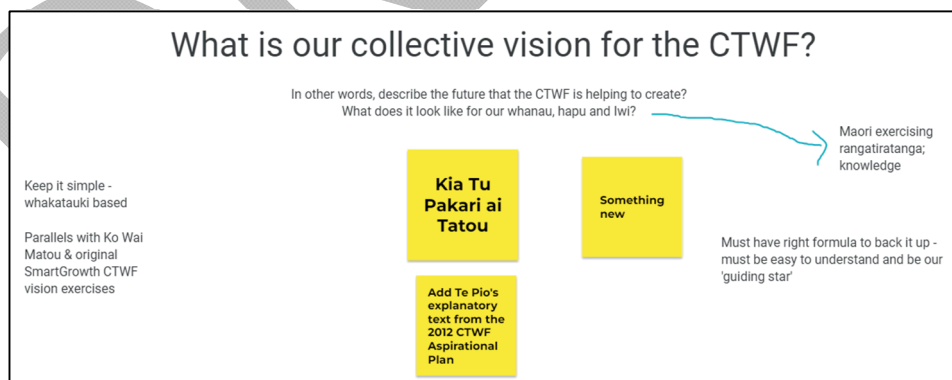
Moved: Te Rūnanga o Ngāi Te Rangi (Whitiora McLeod)

Seconded: Te Rūnanga o Ngāti Ranginui (Des Heke)

Item 7 – CTWF Discussion – Establishing our own Strategic Direction (Paper C)

- We need to develop a work programme to assist with us being proactive, focused & effective that guides our collective work.
- Elva spoke to the pre-circulated questions to the agenda for consideration.
- In support of the kaupapa, reflection back on the CTWF's Aspiration Plan (2012)¹ which Tū outlines a potential vision by distilling our whakataukī.

“Kia tū pakari ai tātou : We are responsible for ensuring the rangatiratanga of the hapū and iwi (tangata whenua values, principles, traditions and customs) are incorporated and maintained throughout the implementation processes of the SmartGrowth Strategy. We support future hapū and iwi growth management and development needs.”



¹ <http://www.smartgrowthbop.org.nz/media/1096/f-nga-wawata-a-te-roopu-tu-pakari-aspirational-plan.pdf>



“Kia Tū Pakari ai Tātou”

What are our collective values and/or principles to guide the way we work?



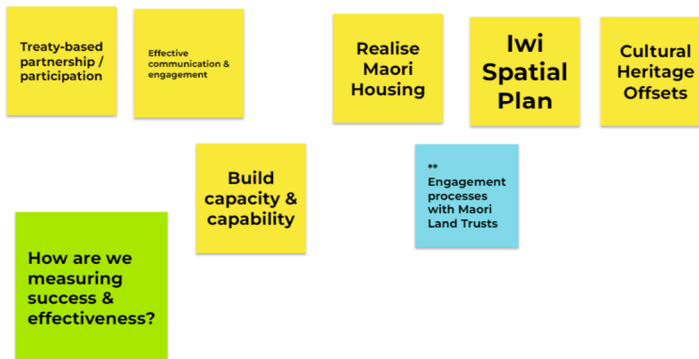
The following outcomes are suggested to help describe what our collective vision looks like, in practice.



Are these accurate? Anything missing or not need?

What are the priority actions &/or outputs for the CTWF this year?

Where should we be focusing our efforts over the next 11 months?



- Over the next six weeks, we'll look at sending communications via email to ensure that all CTWF members can contribute to this work programme.



“Kia Tū Pakari ai Tātou”

ACTION: Elva to circulate what has been gathered and will look to populate & refine further. Aim is to have as a one pager work programme for the team.

- What is our collective vision for the CTWF?
- What are our collective values and/or principles to guide the way we work?
- What are our priorities for 2022?
- What are the priority actions and/or outputs for the CTWF this year? Where should we be focusing our efforts over the next 11 months.

Item 8 – Amendments to Terms of Reference (Paper D)

- Te Pio Kawe tabled the proposed amendments to the Terms of Reference.
- Goal to have draft finalised by August 2022 in time for the next triennium.
- Te Pio and Whiti met in early January 2022 to work through changes as it was an item raised at the 8 December 2021 CTWF hui.
- Issues raised herein are around key responsibilities for the forum, trying to correct the wording as to where stand in implementation and role for the CTWF members.
- Membership & Form
- Following meeting held with Te Pio & Whiti, Te Pio spoke with some of the current SLG rep to understand how representatives have been appointed to SLG., Reference was made to Shad Rolleston’s paper on Tāngata Whenua Representation in July 2020 with 3 options:

“Representation Models

In 2019, the CTWF resolved to review governance representation for the SLG. CTWF are interested in ensuring tangata whenua are adequately represented at a governance level. Three options were discussed at CTWF in February, and the Tū Pakari Advisor was directed to engage further with tangata whenua on proposed governance models. The proposed governance options are:

“Status Quo –

- *WBOP Partnership Forum appoint one (1) member from its membership*
- *Te Rangapū Mana Whenua o Tauranga Moana appoint one (1) member from its membership*
- *CTWF elect two (2) members from its membership*

Option 2

- *WBOP Partnership Forum appoint two (2) members from its membership*
- *Te Rangapū Mana Whenua o Tauranga Moana appoint two (2) members from its membership*

Option 3

- *Appointments panel – an appointments panel would form to assess nominations and make appointments to SLG based on expertise and skill.*



“Kia Tū Pakari ai Tātou”

Engagement on Governance Models

Te Rangapū Mana Whenua o Tauranga Moana confirmed on [date] and the Western Bay of Plenty Partnership Forum on [date] confirmed Option 2 as a governance model.

Recommendations

The Combined Tangata Whenua Forum:

1. **Note** the contents of this report; and
2. **Endorse** to Option 2”

The next SLG Hui on 21 October 2020, Tāngata Whenua Representation was reported in Paper B of the Quarterly Update Report from the Strategic Advisor (Ken Tremaine) as:

“Tāngata whenua are currently represented on the SLG by four representatives. The Western Bay of Plenty Partnership Forum, and the Rangapū Mana Whenua o Tauranga Moana appoint one each from its membership, and the remaining two members are elected from the Combined Tāngata Whenua Forum (CTWF).”

The current (October 2020) CTWF governance representation on SLG are:

- *Matire Duncan - Te Rangapū Mana Whenua o Tauranga Moana;*
- *Kevin Tohiariki - Western Bay of Plenty Partnership Forum;*
- *Irene Walker – CTWF; and*
- *Puhirake Ihaka – CTWF.*

Kevin Tohiariki was recently appointed by Western Bay of Plenty Partnership Forum in July 2020, replacing Maru Tapsell. The SLG will need to confirm Kevin Tohiariki as an SLG member.”

- Confusion arises between the CTWF recommendation for Option 2 in July and the reported status in the October SLG Update report for Status.
- The current Tangata Whenua representatives on SLG are a mix of options:
 - 1 representative from Te Rangapū, Matire Duncan,
 - 1 from WBoPDC Kevin Tohiariki,
 - 2 from CTWF were Irene Walker and Puhirake Ihaka; Puhirake resigned in late 2021 and was replaced by Geoff Rice as the 2nd WBOPDC representative.
 - Matemoana McDonald was nominated and appointed as the Chairman of the CTWF Hui on 6th October 2021. The CTWF Chair is also one of the four TW representatives on SLG.



“Kia Tū Pakari ai Tātou”

- Question raised around the appointment of Geoff Rice when there was no vacant seat as only had one and this was already filled by Kevin. Geoff’s appointment to SLG has come through as WBoPDC whereas needs to be for CTWF.
- Will come back through to this hui for re-appointment as CTWF rep, not WBOPDC.
- Matire endorsed Te Pio’s update. Noted change to 1 for Rangapū, 1 from Partnership at Western Bay and 2 CTWF.
- Puhirake – sequence of timing and events from July onwards – agree with papers that were tabled. In terms of where the 2 from each came from – period in between read out Option 2 put to SLG was that model – 2 from Rangapū, 2 from Western Bay. Is Te Pio saying this was rejected by SLG and returned as 1 from Rangapū, 1 from Western Bay and 2 from CTWF? At Te Rangapū, it was endorsed that there be two from each of the forums and an alternate and to be tabled to SLG under Option 2. Do recall the Rangapū, in advance of this being confirmed with SLG, that had minuted an election which appointed two people to it, awaiting final confirmation from SLG.
- Whiti expressed his dissatisfaction as to how the reps were appointed, noting we don’t have to join the CTWF, we decided to ensure none of us were being out voted.
- Matemoana responded to Whiti’s feedback, noting that she was in no way speaking for CTWF, she was representing CTWF and providing feedback from the CTWF.
- Peter Winder – thanked the Forum for the opportunity to speak.
- Noted at next meeting of SLG in March, the need to recognise the TW representatives situation and ensure that we have a valid way of making decisions at SLG and that at the core of a problem we now have is an inconsistency between resolutions of SLG.

ACTION: The Tū Tū Pakari Advisor is to make it clear at the next meeting the SLG what it is the CTWF would like the outcome to be and that if that is possible, we can resolve this by way of a simple resolution at the SLG meeting, however it starts with CTWF.

Item 9 – Forum Project – Cultural Heritage Offsets – Presentation by Des Heke & Mark Batchelor

- Basis of this was for both the recognition of cultural heritage and definition of offsetting and compensation in the upcoming bill along with growing needs for the city in terms of spatial planning.
- Spatial Plan issues discussed in May 2021 hui, Tiki and Des spoke about the issues. Have provided a summary of this which would like to recap on of how korero began and how it has become part of the schedule.
- Working with Elva to develop a project brief to present back to the WBoPDC and TCC in regard to their planning and current spatial planning in the LTPCC and BOPRC.
- BoPRC are going through process in relation to Regional Policy Statement plan change affecting urbanisation. Have met with Nassah around the plan change issues in relation to cultural heritage and how that may be complimentary to cultural offsets. This will require BoPRC to look at TLA policies to enable them to develop their own policies around this.



“Kia Tū Pakari ai Tātou”

Mark Batchelor

- CTWF May 2021 – issues raised around cultural affects due to urbanisation. Concern with responding to offsetting of cultural resources such as landscape, water ways and special features in landscape constructed or otherwise
- Talked about biodiversity offsets and during this time have gone back and forth preparing discussion paper.
- The Chair enquired if this is the mechanism for getting this work through, assuming will come under what we are looking at in the development of the spatial plans, more specifically the Iwi spatial plan. Given limited capacity as SmartGrowth CTWF, was there any discussion with Nassah about this work being picked up by the relevant councils?

- At this stage, there was an interest from WBOPDC to explore in the LTCCP.

Looked at joining the two issues together, special housing accords, challenges through city plan, emission of sites, these sites are being discovered then we lose the heritage and evidence of occupation. We observe this, in turn we are being involved in biodiversity of our own wetlands and can't build on our own lands, with the culture landscape changing.

Up to Iwi for determination as to what is for destruction / alteration. Will be counted as development contribution.

Further comments can be made to Des & Mark who will respond via the submission process,

ACTION: Des to report back on how progressing in this space.

ACTION: Elva to circulate the papers referred to in Des' presentation in the e-pānui.

Item 10 – Other Business

- Elva raised question around future meetings if would like to continue with guest speakers, how would like meetings structured?
 - Important to keep the agenda light for good discussion.
 - Guest presenters when needed but must be relevant to our work.
 - Whiti – good conversation over some topics, especially while meetings continuing online.

Item 11 - Karakia Whakamutunga (Geoff Rice)

Meeting Closed: 1:05pm

Next Meeting:

12 April 2022

9:30am-12:30pm

Western Bay of Plenty District Council Chambers (alert level dependent)



“Kia Tū Pakari ai Tātou”

Action List				
	Date	Action	Person Responsible	Status
1.		Potential meeting between Ministers and CTWF	Standing item	Pending
2.	2 June 2021	Elva, Tiki and Des to prepare a research brief to investigate cultural heritage offsets.	Elva Conroy	In progress
5.	11 August 2021	The Combined Tāngata Whenua Forum priorities will be workshopped at the October Hui.	Te Pio Kawe	Pending. Included in agenda.
6.	11 August 2021	Develop a Communications and Engagement Plan to enable greater interaction with hapū, Iwi, marae and Māori Land Trusts to discuss Forum matters, particularly concerning housing.	Tū Pakari Advisors	In progress
10.	11 August 2021	Western Bay of Plenty District Council and Tauranga City Council to assist in collating a contact list for all Māori Land Trusts and also an outline of all the Māori Land Blocks.	Chris Nepia Keren Paekau	Pending
16.	6 October 2021	Te Pio and Elva to work with Kelvin, and Council Takawaenga teams with regards to resourcing / support	Te Pio, Elva	Ongoing
17.	8 December 2021	Tū Pakari advisor to obtain updated forum membership lists from TCC & WBOPDC staff. This is to ensure all forum members receive agendas, minutes and e-panui.	Elva, Te Pio	Ongoing. Updated lists received Dec 2021. Will be requested quarterly.
	1 February 2022	Elva to circulate the outcomes of the CTWF work programme discussion	Elva Conroy	
	1 February 2022	Des to report on cultural heritage offsets.	Des Heke	
	1 February 2022	Elva to circulate the papers referred to in Des' presentation in the e-pānui.	Elva Conroy	



Frequently Used Acronyms	
JSP	Joint Spatial Plan
MHUD	Ministry of Housing and Urban Development
PDA	Priority Development Areas
SLG	Strategic Leadership Group
UFTI	Urban Form & Transport Initiative
CTWF	Combined Tangata Whenua Forum

DRAFT

Paper B - Actions from previous CTWF meetings

	Date	Action	Person Responsible	Status at 1 Dec 21
1.		Potential meeting between Ministers and CTWF	Standing item	Pending
2.	2 June 2021	Elva, Tiki and Des to prepare a research brief to investigate cultural heritage offsets.	Elva Conroy	Still in progress. Brief prepared, cost estimates to be finalised.
5.	11 August 2021	The Combined Tāngata Whenua Forum priorities will be workshopped at the October Hui.	Te Pio Kawe	Included in agenda. Action closed.
6.	11 August 2021	Develop a Communications and Engagement Plan to enable greater interaction with hapu, Iwi, marae and Māori Land Trusts to discuss Forum matters, particularly concerning housing.	Tū Pakari Advisors	Still in progress. Will be presented at next CTWF meeting.
10.	11 August 2021	Western Bay of Plenty District Council and Tauranga City Council to assist in collating a contact list for all Māori Land Trusts and also an outline of all the Māori Land Blocks.	Chris Nepia Keren Paekau	Pending.
16.	6 October 2001	Te Pio and Elva to work with Kelvin, and Council Takawaenga teams with regards to resourcing / support	Te Pio, Elva	Ongoing. Te Pio, Elva and Kelvin meet monthly.
17.	8 December 2021	Tu Pakari advisor to obtain updated forum membership lists from TCC & WBOPDC staff. This is to ensure all forum members receive agendas, minutes and e-panui.	Te Pio, Elva	Updated lists received 15 December and mid March. Action closed.
19.	1 February 2022	Elva to circulate the outcomes of the CTWF work programme discussion	Elva	Circulated with e-panui. Action closed.
20.	1 February 2022	Des to report on cultural heritage offsets	Des	Next CTWF update scheduled for June 2022
21.	1 February 2022	Elva to circulate the papers referred to in Des' presentation in the e-pānui.	Elva	Circulated with e-panui. Action closed.

To: Combined Tāngata Whenua Forum (CTWF)

From: Te Pio Kawe, Tū Pakari Advisor - Pou Ārahi
Elva Conroy, Tū Pakari Advisor - Kai Ārahi

Date: 22 March 2022



Subject: Supporting information for the 12 April CTWF Meeting

This paper provides supporting information for the CTWF Meeting, in relation to:

- Item 5. Report back from SLG
- Item 6. CTWF vision, outcomes and priorities
- Item 7. Our approach for spatial planning
- Item 8. Process for appointment of CTWF reps to SLG

ITEM 5. REPORT BACK FROM SLG

The SmartGrowth Leadership Group (SLG) met on 22 March 2022. Having central government ministers in attendance meant that there could be strategic discussions about how to progress towards shared objectives, including the lessons from our work to date on Priority Development Areas and emerging thinking from work on funding and financing.

The Tū Pakari advisors and CTWF representatives will provide a brief presentation in relation to this kaupapa.

The SmartGrowth quarterly report can also be accessed from the SLG website¹.

CTWF RECOMMENDATIONS

That CTWF members:

1. Receive this report.

ITEM 6. CTWF VISION, OUTCOMES AND PRIORITIES

At our last CTWF meeting, we discussed the:

- Collective vision for the next 10 years (& beyond).
- Outcomes (i.e. what the vision looks like, in practice).
- Collective values and/or principles to guide the way we work.
- Our priority actions and outputs for this year.

The raw discussion points can be accessed here². The draft Vision and 2022 priorities is attached.

¹ <https://www.smartgrowthbop.org.nz/about-us/leadership-group/agendas-papers-minutes/>

² <https://drive.google.com/file/d/1P3Utzp3j4Llo21WGNoQBm7Rw9mc8pYOC/view?usp=sharing>

WHAT THIS MEANS FOR THE CTWF

The first two pages (vision, role, values, outcomes) form the foundation for our collective role with SmartGrowth. It also helps to guide the Tu Pakari advisors in their mahi and the CTWF representatives on SLG in terms of articulating our collective position.

The third and fourth³ page (priorities) highlights what we will focus on this year to ensure we are more proactive and productive. There will be a standing item on the CTWG agenda to provide an update in relation to each priority.

CTWF RECOMMENDATIONS

That CTWF members:

1. Provide feedback on the draft Vision & priorities document i.e. is there anything missing?
2. Provide guidance on the implementation of our priorities for 2022.

³ NB will add a final page with the activities for each priority.



Te Tūāpapa mō te Rōpū Tū Pakari

The Foundation for the Combined Tāngata Whenua Forum



OUR COLLECTIVE VISION

Kia tū pakari ai tātou
Together, we thrive



OUR ROLE IN DELIVERING THE VISION

We are responsible for ensuring the rangatiratanga of hapū and iwi (particularly tāngata whenua values, principles, traditions and customs) are incorporated throughout SmartGrowth Strategy projects, processes and decisions.

We are responsible for supporting future hapū and iwi growth management and development needs.



OUR GUIDING PRINCIPLES

Rangatiratanga/Mana
Whānaungatanga
Tipuranga
Kaitiakitanga
Manaakitanga



OUR COLLECTIVE OUTCOMES

TE WHENUA

Our people are enabled to occupy, develop and use multiple owned Māori Land and Treaty Settlement Land.

TE NGĀKAU

Our marae communities are connected to social and health services, education and sporting facilities, and where practical, public transport.

TE TAIAO

The health and wellbeing of our natural environment is not compromised further as a result of land use and development.

NGĀ WĀHI TŪPUNA

Our sites and areas of cultural significance are cared for and protected from further degradation and loss.

TE MANAWAROA

Our communities and cultural infrastructure are resilient to a changing climate.



2022 Priorities for the Combined Tāngata Whenua Forum

In 2022, the CTWF will focus on the following projects:

REALISING
MĀORI
HOUSING

SPATIAL
PLANNING

CULTURAL
HERITAGE
RESEARCH

We will also focus on ensuring:

TREATY-BASED
PARTNERSHIP /
PARTICIPATION

AN EFFECTIVE
CTWF

To support all of the above, we need:

- To build our collective capability and capability.
- Effective communication and engagement with hapū, iwi, marae committees and Māori Land entities.
- Support from SmartGrowth partner agencies.

ITEM 7. OUR APPROACH FOR SPATIAL PLANNING

CONTEXT

Our goal is to collect, collate, analyse, map and document the future aspirations of tāngata whenua in relation to the Western Bay of Plenty sub-region. We'll need to link with our hapū, iwi, marae committees and Māori Land entities to answer the following:

- What are the key values or principals that underpin and guide Tangata Whenua Spatial Planning?
- What is a long term tāngata whenua strategic direction or vision for the sub-region?
- What will the sub-regional look like from a tāngata whenua perspective in 25, 50 or 100 years?
- What are the steps required to achieve the long-term vision?

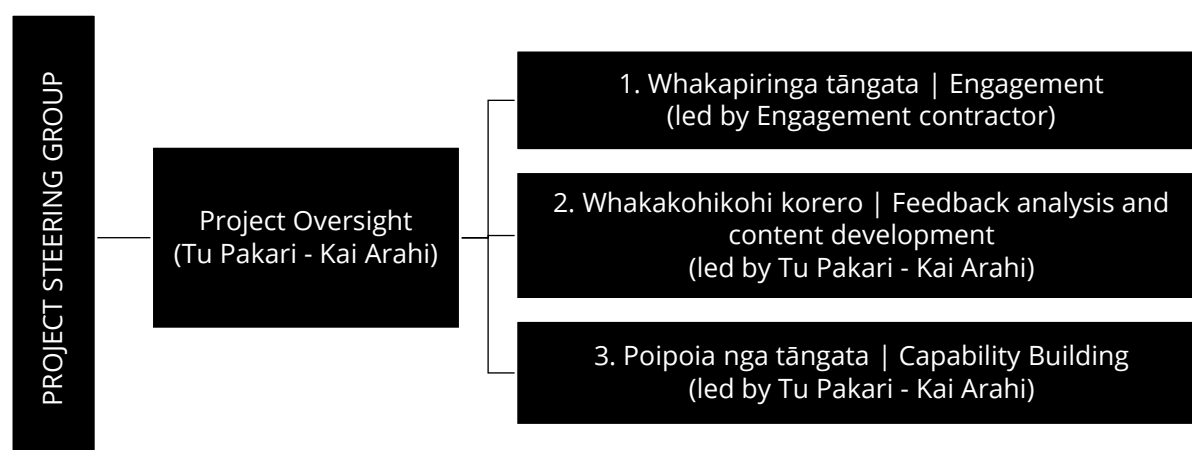
OUTPUTS

We will utilise the CTWF outcomes (refer vision document) to form a starting point for focused discussions. The outputs for this project will be used to guide and influence:

1. Future SmartGrowth Plans (e.g. Joint Spatial Plan 2024) and investment by local and central government into tāngata whenua initiatives.
2. Projects and work programmes led by hapū and Iwi within their respective rohe (e.g. hapū/iwi management plans)
3. Future engagement and/or capability building with tāngata whenua.

STRUCTURE OF PROJECT TEAM

The project will be set up as follows:



PURPOSE OF EACH WORKSTREAM

The purpose and function of each workstream is summarised below:

Workstream	Purpose	Key functions
1. Whakapiringa tāngata Engagement	To lead effective, meaningful and well-supported engagement so that tāngata whenua can articulate their values, concerns, and aspirations of relevance to this project.	Connect and communicate Facilitate discussion and collect feedback
2. Whakakohikohi korero Feedback analysis and content development <i>Mā te whiritahi ka whakatutuki ai ngā pūmanawa ā tāngata</i> <i>Together weaving the realisation of potential</i>	To collate and analyse tāngata whenua values, concerns and aspirations into maps and clear directives / ways of working / actions to inform and guide: <ul style="list-style-type: none"> • continued engagement with tāngata whenua. • the SmartGrowth JSP / Future Development Strategy • plans and projects developed by and for tāngata whenua • plans and projects developed by SmartGrowth partner agencies. 	Bridge between engagement feedback and spatial planning outputs Identify gaps and/or content for engagement and capability building
3. Poipoia nga tāngata Capability Building <i>Poipoia te kākano kia puawai</i> <i>Nurture the seed and it will blossom</i>	To build collective capability with regards to spatial planning, plan/policy development and its practical application and benefit for tāngata whenua. This includes sharing learnings from similar projects and from each other.	Build knowledge and skills Enable sharing of knowledge and experiences

WHAT THIS MEANS FOR THE CTWF

This is a spatial planning programme not a (singular) spatial plan

This project helps to build the groundwork, networks and capability for continued work with/by tāngata whenua in future planning for the sub-region. We've needed to highlight to our SmartGrowth partner agencies that engagement feedback will be based on aspirations and capacity of tāngata whenua **at that point in time**. In some areas of the sub-region, this feedback may be detailed; while in other areas, feedback might be broad or non-existent (i.e. where capacity is limited).

The next 18 months will be busy.

The proposed workplan for the next 18 months is provided overleaf.

Of note:

- The Kai Ārahi will start allocating at least 60% of her time on this project.
- We'll be advertising shortly for a contractor to lead engagement for tāngata whenua spatial planning and Māori Housing aspirations (through the Housing Aspiration Plans). ***Please keep to ear to the ground for a suitable helper.***
- We will need to link with spatial planning work underway within Tauranga City.
- We may need a phased approach for remaining (e.g. Eastern Town, where pressure is greatest).
- We will need to link with each hapū and Iwi to identify preferred way of working.
- CTWF members will be provided with updates at every CTWF meeting. There will also be direct engagement with CTWF members to start gauging 'current state' in terms of capacity, capability and information.

PROJECT STEERING GROUP

A Project Steering Group will be set up to provide more regular support and guidance especially regarding engagement and capability building in the first six months.

This group will comprise **2-3 tāngata whenua representatives and/or topic-specific advisors mandated by the CTWF; 1-2 tāngata whenua representatives from the SmartGrowth Leadership Group;** and Staff from the three Councils, particularly from the Takawaenga / Māori policy and GIS mapping teams.

CTWF RECOMMENDATIONS

That CTWF members:

1. Indicate their level of comfort with the proposed approach for spatial planning.
2. Suggest tāngata whenua members to join the Project Steering Group.
3. Confirm their level of comfort with Arthur Flintoff, which has spatial planning knowledge, joining the Project Steering Group.

Workstream	10 January – 30 June 2022	1 July – 16 December 2022	9 January – 30 June 2023
1: Whakapiringa tāngata Engagement Led by: contractor (engagement) and Tū Pakari – Kai Ārahi (communications) Directed by: Tū Pakari Advisors and tāngata whenua representatives on the Project Steering Group Supported by: Pou Ārahi, CTWF members, Council partner agencies	Activities: <ul style="list-style-type: none"> • Confirm engagement clusters & methods with Project Steering Group and CTWF. • Engagement with Iwi/hapū clusters and marae committees. To include discussion. • Develop messaging and questions for engagement. 	Activities: <ul style="list-style-type: none"> • Continued engagement with Iwi/hapū clusters and marae committees. • Engagement with Māori Land and Treaty entities. 	Activities: <ul style="list-style-type: none"> • Continued engagement with Iwi/hapū clusters, marae committees as well as Māori Land and Treaty entities.
	Deliverables: <ul style="list-style-type: none"> • TWSP Communications & Engagement Plan • Updated contacts database / spreadsheet • Project E-pānui x2 including draft framework for spatial planning. 	Deliverables: <ul style="list-style-type: none"> • Communications & engagement feedback report/s • Updated contacts database / spreadsheet • Project E-pānui x3 including draft spatial planning content. 	Deliverable: <ul style="list-style-type: none"> • Communications & engagement feedback report/s • Updated contacts database / spreadsheet • Project E-pānui x3 draft spatial planning content.
2: Whakakohikohi korero Feedback analysis and content development Led by: Tū Pakari – Kai Ārahi Supported by: Engagement	Activities: <ul style="list-style-type: none"> • Develop framework for spatial planning. • Collate cluster-specific information to guide engagement (i.e. what we know, what we don't know). • Collate publicly available data from Treaty Settlements and Iwi/Hapū Management Plans. 	Activities: <ul style="list-style-type: none"> • Analysis of engagement feedback as it is received. • Identification of gaps and/or content for engagement and capability building. • Development of spatial planning content¹ following feedback analysis. 	Activities: <ul style="list-style-type: none"> • Analysis of engagement feedback as it is received. • Identification of gaps and/or content for engagement and capability building. • Development of spatial planning content following feedback analysis.

¹ May include maps, values/principles, vision, statements of positions, actions etc

Workstream	10 January – 30 June 2022	1 July – 16 December 2022	9 January – 30 June 2023
contractor, CTWF members, Council partner agencies	<ul style="list-style-type: none"> Connect with, and collate relevant content from, SmartGrowth partner agencies in relation to overlapping projects. 	<ul style="list-style-type: none"> Connect with, and collate relevant content from, SmartGrowth partner agencies in relation to overlapping projects. 	<ul style="list-style-type: none"> Connect with, and collate relevant content from, SmartGrowth partner agencies in relation to overlapping projects.
	Deliverable: <ul style="list-style-type: none"> Interim spatial planning framework 	Deliverable: <ul style="list-style-type: none"> Preliminary spatial planning content based on analysis of feedback received up to 30 Nov 2022. 	Deliverable: <ul style="list-style-type: none"> Spatial planning content based on analysis of feedback received up to 30 Nov 2022.
3: Poipoia ngā tāngata Capability building Led by: Tū Pakari – Kai Ārahi Supported by: Engagement contractor, CTWF members, Council partner agencies	Activities: <ul style="list-style-type: none"> Preparation of resources / collateral to support engagement. Gauge current capacity and capability of tāngata whenua to be contribute to the TWSP via CTWF workshop and iwi/hapū authority survey. Hold one capability building wananga / workshop. This may involve contracting people to lead topic-specific workshops / wananga. 	Activities: <ul style="list-style-type: none"> Hold at least 2 capability building wananga / workshops. This may involve contracting people to lead topic-specific workshops / wananga. Preparation of resources / collateral to support engagement. 	Activities: <ul style="list-style-type: none"> Hold at least 2 capability building wananga / workshops. This may involve contracting people to lead topic-specific workshops / wananga. Preparation of resources / collateral to support engagement.
	Deliverable: <ul style="list-style-type: none"> Outcomes from initial CTWF survey / workshop discussion Tāngata whenua capability plan. Summary report of resources prepared and workshops / wananga held. 	Deliverable: <ul style="list-style-type: none"> Summary report of resources prepared and workshops / wananga held. 	Deliverable: <ul style="list-style-type: none"> Summary report of resources prepared and workshops / wananga held.

ITEM 8. PROCESS FOR APPOINTMENT OF CTWF REPS TO SLG

This paper was unavailable at the time of agenda preparation. The paper will be pre-circulated before the meeting.

To: Combined Tāngata Whenua Forum (CTWF)
From: Nassah Rolleston-Steed
Date: 16 March 2022
Subject: Proposed Change 6 (National Policy Statement Urban Development) to the Bay of Plenty Regional Policy Statement

WHAT I WANT TO TALK TO THE CTWF ABOUT

To provide tangata whenua with an update and seek feedback on Proposed Change 6 (PC6) to the Bay of Plenty Regional Policy Statement. PC6 purpose is to implement the National Policy Statement Urban Development 2020 (NPSUD). Toi Moana staff last presented to CTWF on this matter on 11 August 2021, and have contacted tangata whenua across the Region in March and November 2021.

Tangata whenua interest from earlier rounds of consultation has been limited. Toi Moana staff had discussions with Des Heke regarding cultural offsetting framework following comments received on 16 November. This included a site visit to Kaitemako on Friday 14 January. Following consideration of cultural offsetting concept proposed Treaty of Waitangi Principles Policy UG 22B has been amended to include reference to cultural offsetting in the explanation.

Toi Moana staff acknowledge a research project to develop and refine a cultural offsetting framework is being progressed under the CTWF banner.

WHY I WANT TO TALK TO THE CTWF ABOUT THIS

Toi Moana staff are endeavouring to promote opportunities to consult with iwi Māori particularly those located in 'urban environments' (as defined by the NPS-UD). We want to ensure tangata whenua are aware of PC6 and have opportunity to provide input and understand the changes proposed and their implications.

Regional Council is applying to use the Streamlined Planning Process (SPP) for PC6 and is in negotiation with Ministry for the Environment officials with respect to that process. Staff are aiming to lodge the SPP in April so this is the last opportunity for tangata whenua to have informal input on PC6 before the formal submissions process gets underway.

WHAT I WANT FROM THE CTWF

Opportunity to discuss and get feedback on PC6 and any implications for tangata whenua. Toi Moana staff are happy to meet with hapū or iwi separately at a time and venue that suit whānau. I will provide a copy of the most up to date version of PC6 in advance of the hui noting changes are still being made in response to feedback being received from territorial authorities.

Name: Nassah Rolleston-Steed

Position: Principal Advisor

Contact number: 0273999713