



“ Kia Tū Pakari ai Tātou”

He Pitopito Korero

NŌ TE TĪMA
TŪ PAKARI

SMARTGROWTH TŪ PAKARI UPDATE - DEC 2023

This e-pānui is a way of keeping tāngata whenua connected to the [Combined Tāngata Whenua Forum \(CTWF\)](#) and the many projects associated with SmartGrowth.

Feel free to share this e-pānui with your whānau, hapū, marae committees, Iwi and wider networks.

The Tū Pakari team have had an incredibly busy year.
Kua pau te hau...

We have prepared a detailed report of the key activities, achievements and challenges for 2023 (attached). This will be presented to the SmartGrowth Leadership Group (SLG) on Monday 18 December.

As the year comes to a close, we would like to take the opportunity to thank our CTWF members and tāngata whenua representatives on SLG. Your collective support and guidance is appreciated.

E rere ana ngā mihi nunui, ngā mihi maioha
kia koutou katoa.

Committee Name	SmartGrowth Leadership Group
Committee Meeting Date	28 November 2023
Author (s)	Te Pio Kawe, Tū Pakari – Pou Ārahi (Strategic Advisor) Elva Conroy, Tū Pakari – Kai Ārahi (Technical Advisor)
Purpose	To provide an update on the Tū Pakari work programme across 2023 to progress Combined Tāngata Whenua Forum outcomes and priorities.

1. It has been a busy year for the Tū Pakari team (of two part-timers) particularly in relation to Māori housing, Combined Tāngata Whenua Forum (CTWF) and SmartGrowth Strategy.
2. 2023 has highlighted the importance and value of the Tū Pakari team, CTWF and appointed tāngata whenua representatives on SLG to ensure the voice of tāngata whenua within SmartGrowth.

Māori Housing

Meeting with Minister Woods

3. The tāngata whenua representatives of SLG met with the previous Minister of Housing, Megan Woods on 1 August 2023. The purpose of the meeting was to present our collective WBOP Māori Housing workstream approach for Marae and Māori Land Trust.
4. The multi-year approach was received positively and supported by housing officials; however, we were unable to access any further project feasibility, infrastructure and housing funding for the sub-region.

Ara Rau Tāngata

5. As previously reported to SLG, Ara Rau Tāngata Inc is a Whenua Māori led forum to support and address the needs and aspirations for Māori land.
 - a) This forum was formally established as an Incorporated Society in July this year. Strategic planning has concluded with implementation commencing in 2024. This includes providing practical solutions for whenua Māori; education and workshops; and access to resources and technical experts. A strength of this forum is the ability to:
 - b) collate and share research of case studies of what works well and is sustainable.
 - c) strengthen existing relationships with agencies, and looking for new relationships to achieve innovations that support future aspirations.
 - d) Ara Rau launch and conference / workshops in 2024.

Progress Māori Housing in 2024

6. The Pou Ārahi has reallocated time to focus on supporting the WBOP Māori Housing workstream for the City Deals subregional economic and infrastructure investment proposal to be presented to the new National lead coalition government.
7. This approach highlights the economic benefits and outcomes detailed in the BERL 2013 Report on the “Economic Impact of Papakāinga Housing in the Bay of Plenty” would generate from the build of 252 homes in WBOP the following:
 - a) A spend of \$64.9M, Generate 53.1m in additional GDP, and support 1,128 full-time jobs,

b) 25 new whānau returning to the WBOP would also spend 1.13m, generate \$1.08m in additional GDP and support another 19 full-time jobs.

8. The summary table below shows the capital investment required for each step of the process to enable and unlock the opportunities for 144+ papakāinga homes to be built during 2026.

Timeframes: 12 - 18 months, Trusts / whānau host hui and wānanga to establish their collective whenua and papakāinga vision and values during phases 1 & 2.		12 - 24 months, the majority of Land Trusts require capital investment support to engage professional advice from consultants to deliver the required technical reports and plans, required to progress each stages of the process.				
	Development Phase 2024			Build / Construction Phase 2025 - 2026		
Phases:	1	2	3	4	5	6
WBOP Marae, Ahu Whenua / Māori Land Trusts and other Māori Entities. Whānau must work with councils, government agencies, and multiple professionals to progress their housing needs and aspirations.	Establish Ahu Whenua Trust kaupapa / vision for papakāinga.	Feasibility funding to develop concept design and layout plans.	Structure Plan: with the appropriate infrastructure services and consents.	Business case to fund the build of all papakāinga civil infrastructure services.	Business case for homeownership / rental housing options.	Trusts and whānau building homes on their whenua.
	Funding for WBOP Ara Rau Tāngata Papakāinga workshops.	Concept Plan: future land uses, based on social, eco and taiao values.	Funding for detailed infrastructure design drawings & plans and appropriate consents.	Funding required to construct / build the infrastructure / civil services.	Trusts / individuals seek funding for housing options for rental and or homeownership.	Trust project manager tenders new infrastructure and house builds .
	Whānau / Trust progress key papakāinga development design, orientation, layout, communal areas, and infrastructure options.	Consider the engagement of whānau members with the appropriate project management, trade, and / or contracting building / housing skills and expertise to assist or deliver specific services.		Business case and funding applications are prepared and developed by local consultants and the Trusts project manager.		Construction phases may include whānau procurement, employment and training opportunities for whānau.
Estimated WBOP Māori Housing Investment:	\$150,000	\$268,747	\$1,099,011	\$13,862,286	\$61,920,000	144
	\$150,000	\$418,747	\$1,517,759	\$15,380,045	\$77,300,045	
Marae & Māori Land Trusts engaged:		12				
Estimated home builds on Māori Land in WBOP subregion:			STAGE 1	108	STAGE 2	125
Estimated home builds for 2024-2026:			144	Ave Cost per Papakāinga Whare:		\$536,805.87

The multi-year approach The WBOPDC are progressing 12 additional papakāinga projects through their “Better off Funding” for whānau through Māori Land Trusts, Marae, hapū and Iwi. This funding will assist with the project feasibility and consenting steps for these papakāinga projects.

Development of the SmartGrowth WBOP Māori Land Dashboard (KPI's)

- The SmartGrowth team, led by, Monique Etherington is progressing the development of a WBOP Māori Land Dashboard (KPI's) to provide clarity on the status of housing across the subregion along with the support provide by Crown agencies.
- For reference, MHUD have a national dash board that shows the level of regional funding based on the delivery of their Māori housing programs: [He Kura Te Tangata - Te Tūāpapa Kura Kāinga - Ministry of Housing and Urban Development \(hud.govt.nz\)](https://www.hud.govt.nz/).

This is a collaboration between the SmartGrowth partners and will feed into the PDA tracker monitoring in 2024.

Combined Tāngata Whenua Forum

CTWF Meetings

12. The CTWF met on 28 March, 26 May, 28 July, 27 September and 28 November at the Council Chambers of WBOPDC. Member attendance was both in-person and online.
13. Key agenda items across the year include:
 - a) Regular Tū Pakari updates.
 - b) Confirmation of tāngata whenua representatives on SLG and appointment of SmartGrowth Strategy Political Liaison.
 - c) SmartGrowth specific presentations, including SmartGrowth Strategy, Industrial Land Study; Sub-regional Water Services Study; Transport System Plan; Waka Kotahi Business Case for Tauriko SH29 Network.
14. Sessions were also held with regards to the draft Strategy, in particular:
 - a) May Overview session: To introduce / reintroduce Forum members to the draft SmartGrowth Strategy, focused on key parts of the Strategy to tāngata whenua e.g., housing; climate change; areas to be protected and developed carefully; blue-green environment; rural as well as urban form and centres.
 - b) July session: Focused on Transformational shifts; Future Development Strategy and Māori Housing.
15. Guest presentations included:

Presenter	Kaupapa
Tauranga Carbon Reduction Group / Sustainable BOP Charitable Trust	Key sustainability and climate change priorities as they relate to SmartGrowth.
Transpower & PowerCo	Overview about the WBOP electricity sector and upcoming strategy development.
Gia Nelson, student from Mount Maunganui College	About safety concerns on Hewlett's Road. This resulted in a CTWF letter of endorsement to TCC, Waka Kotahi and KiwiRail.
Quayside Holdings Ltd	Start an ongoing dialogue and relationship with the Forum.
Ministry of Housing and Urban Development	An update on MHUD & Māori Housing.
BOPRC Freshwater Policy Team	An update on freshwater planning under the National Policy Statement for Freshwater Management.
Fitzwalter Jain Consulting on behalf of BOPRC	Overview about Western Bay Public Transport Services & Infrastructure Project.
Priority One	Overview about the City Deals Proposal (Māori Housing project).

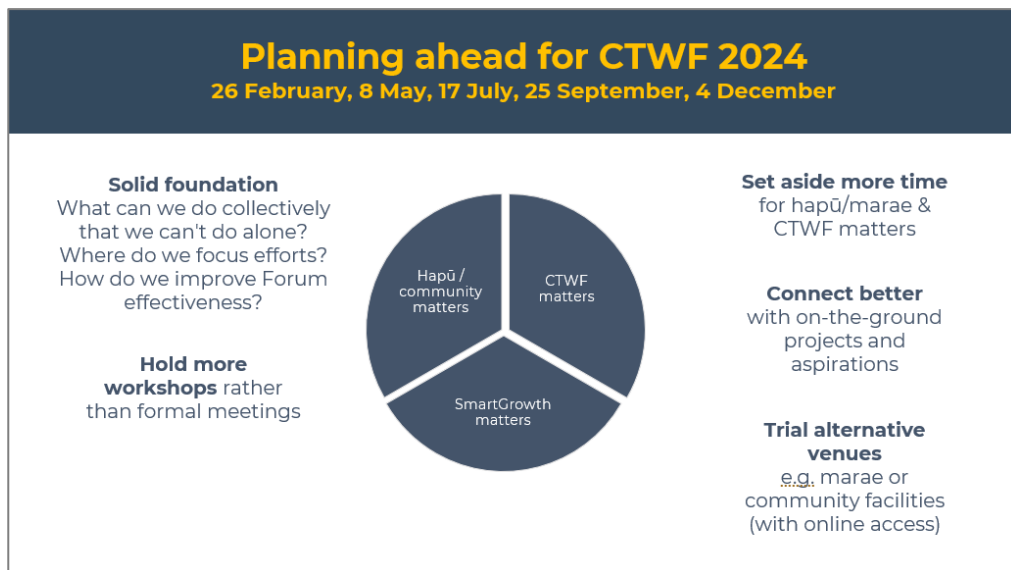
16. Copies of all CTWF agendas, minutes and presentations can be accessed on the SmartGrowth website: <https://www.smartgrowthbop.org.nz/categories/ctwf-meetings>.

E-Pānui / E-newsletter

17. The Tū Pakari team released two e-pānui this year to support communication from CTWF members to their respective hapū, Iwi, marae and Māori Land Trusts. Ideally, e-pānui need to be released regularly (6-8 weekly) to be effective but, due to limited capacity, were released sporadically. Refer to [Appendix 3](#) for a copy of the e-pānui.

CTWF effectiveness survey

18. In September this year, a survey was released to gauge how CTWF members were feeling in terms of overall CTWF effectiveness and meeting satisfaction. Refer to [Appendix 2](#) for excerpts of the survey outcomes.
19. The survey highlighted that the CTWF is not operating as effectively as it could be. For 2024, opportunities will be pursued to:
 - a) ensure a clear purpose and strategic direction for the CTWF which aligns with, and delivers, CTWF outcomes.
 - b) find a better balance with CTWF meetings to ensure focused discussion on key topics of significance to tāngata whenua.
 - c) trial alternative venues for CTWF meetings to better connect with hapu / Māori land trusts as well as projects. For example, Te Rereatukahia marae (Ngāi Tamawhariua) which is working on papakāinga and climate resilience projects.



20. Planning for mana whenua-based workshops on marae will be progress at our first CTWF hui in February 2024.

SmartGrowth Strategy

21. The Tū Pakari team has allocated a significant amount of their time this year to the SmartGrowth Strategy. This has included:
 - a) Drafting content for the draft Strategy, including but not limited to, the tāngata whenua chapter; embedding CTWF outcomes; contributing to other chapters (e.g., housing, rural); as well as ensuring integration across chapters.

- b) Preparing the background paper which sets out how SmartGrowth has considered tāngata whenua values, interests and aspirations in preparing the draft Strategy. This report is available on the SmartGrowth website¹.
- c) Providing support to the tāngata whenua representative on the Strategy Hearing Panel.
- d) Attending and contributing to Strategy working group meetings and contributing/supporting presentations to SLG. In additional part of the informal engagement hui with former SmartGrowth Forum partners in May 2023.
- e) Including, within the September e-pānui, information about the draft Strategy including an assessment of the extent to which the draft Strategy progresses CTWF outcomes and tāngata whenua aspirations.
- f) Supporting CTWF and tāngata whenua representatives on SLG throughout the plan drafting, submission and hearing process. As outlined earlier, this included focused sessions with CTWF in May, July and September about the draft Strategy.
- g) On request of CTWF members, informal workshop sessions were held in October to support the development of submissions to the draft Strategy. These sessions were successful and resulted in a number of attendees making their own submissions and presenting at the hearings.
- h) Feedback was also collated from the three online sessions to form a collective submission to the draft Strategy. Refer to Appendix 1 for a copy of the collective submission.

Draft Strategy sessions for Tāngata Whenua

Online sessions:

- Tuesday 10/10 evening
- Friday 13/10 morning
- Tuesday 17/10 afternoon

Mix of active CTWF members (active & non-active) as well as whānau

Feedback:

- Some individual submissions
- Collective feedback from online sessions



Tāngata Whenua Spatial Planning

22. A regular question this year has been “*what’s happening with the Tāngata Whenua Spatial Plan?*” **For 2023, all available capacity within the Tū Pakari team was reallocated to support the SmartGrowth Strategy processes.** This has affected the ability to focus on, or progress, the work behind the Tāngata Whenua Spatial Planning work programme.

¹ <https://www.smartgrowthbop.org.nz/articles/smartgrowth-strategy-2023-background>

What was originally intended?

23. The project (previously known as the Iwi Spatial Plan) originated through the UFTI programme. Preliminary scoping of the project was carried out in late 2020, which proposed research and targeted engagement before developing the Spatial Plan. It would take a 'top down' approach.
24. Following discussions with the CTWF in 2021, including a spatial planning workshop, the approach changed slightly as follows:
 - a) Tāngata whenua engagement and spatial mapping / planning would happen in parallel.
 - b) Some hapū and Iwi were keen to progress their own rohe-based spatial planning and GIS system, demonstrating a 'bottom up' approach. Support would be provided from Tū Pakari advisors where possible.
 - c) Opportunities would be pursued to build collective capability re: spatial planning, plan/policy development and its practical application. This would create long term benefits and continued involvement of tāngata whenua in SmartGrowth projects.

What progress has been made?

25. Progress has been limited by a number of challenges, including:
 - a) Competing priorities and limited capacity of tāngata whenua and Tū Pakari team.
 - b) Resourcing (funding, people) to support tāngata whenua engagement.
 - c) Finding ways to adequately support hapū / Iwi who want to lead their own spatial planning.
 - d) Consultation fatigue felt by tāngata whenua.
26. Engagement to date has included three He Tirohanga Matawhānui workshops in 2022, multiple collective Māori Land Trust meetings (resulting in Ara Rau Tāngata Inc.), updates at CTWF meetings along with ad hoc meetings with individual hapu, iwi and Māori Land Trusts. It has been a start but not enough.
27. Capability building has been guided by the CTWF. A number of workshops were held in 2022 relating to Iwi and hapu management plans and their connection to spatial planning. Plans have been developed with BOPRC staff to coordinate GIS training and support. These plans have yet to be implemented as they need to be rolled out at the right time.

Where to from here?

28. There are frustrations from the CTWF and Tū Pakari team regarding the lack of tangible progress on the Tāngata Whenua Spatial Planning work programme. **Early 2024 will see a fresh eyes look at work programme, resourcing and potential innovations for engagement.**

Resourcing and Budget

Resourcing

29. The Tū Pakari advisors renewed their contracts for the period 1 May 2023 to 30 April 2024.
30. The number of Pou Hononga engagement specialists reduced from two to one in 2023. The contract for the remaining engagement specialist expires on 31 March 2024.
31. The WBOPDC and TCC Takawaenga (i.e., tangata whenua liaison) teams have recruited well in 2023 and have boosted their respective liaison and engagement teams. We will need to work closer with these engagement teams in 2024 to avoid duplication of effort and ensure consistent engagement with marae, Māori communities and Māori land trusts.

Budget

32. The Tāngata Whenua budget will be underspent as planned and budgeted engagement hui did not occur. The Pou Hononga engagement specialist vacancy remains unfilled.
33. The Tū Pakari budget costs and programme will be monitored and reviewed with the SmartGrowth Strategic Advisor and SMG.

Summary

34. The Tū Pakari team has worked incredibly hard to support and progress Māori housing aspirations, CTWF and SmartGrowth Strategy.
35. For 2023, all available capacity within the Tū Pakari team was reallocated to support the SmartGrowth Strategy processes. This has affected the ability to focus on, or progress, the work behind the Tāngata Whenua Spatial Planning work programme.
36. For 2024, it will be essential to ensure that the Tū Pakari team are adequately supported to avoid burnout and maintain focus on supporting CTWF outcomes and aspirations.

Recommendations

That the **SmartGrowth Leadership Group**:

1. **Receive** the report for discussion.
2. **Continues** to support and resource the Tū Pakari and Pou Hononga engagement on the development of the CTWF priorities in 2024/25 to progress:
 - a) Māori Housing / papakāinga opportunities as connected marae community centres with Māori land trusts,
 - b) engagement on the Tāngata whenua spatial plan,
 - c) the needs and aspirations of tāngata whenua in the short, medium and long terms actions in the SmartGrowth Strategy and implementation plans 2024 to 2074.



Elva Conroy <elva.conroy@gmail.com>

Collective feedback on the draft SmartGrowth Strategy from tāngata whenua sessions

Elva Conroy <elva.conroy@gmail.com>
To: haveyoursay@westernbay.govt.nz

Thu, Oct 19, 2023 at 2:32 PM

Confidential

Kia ora koutou

Please find below collective feedback from the recently-held tāngata whenua sessions about the draft SmartGrowth Strategy.

About the tāngata whenua sessions

At the Combined Tāngata Whenua Forum meeting of 27 September, members requested an additional opportunity to informally discuss the draft Strategy. This is to enable the preparation of informed and effective submissions.

For this reason, I organised and facilitated three online sessions to (1) de-mystify the draft strategy (2) discuss what the draft content means for attendees and (3) how to provide feedback. It would build upon the information prepared in the most recent Tū Pakari e-pānui:

<https://www.smartgrowthbop.org.nz/categories/e-panui>

The sessions were held:

- Wednesday 11 October (evening)
- Friday 13 October (morning)
- Tuesday 17 October (afternoon)

In total 10 participants joined the sessions, comprising a mix of representatives from CTWF, hapū, iwi and Māori land trusts.

How were attendees feeling?

Some attendees were comfortable with the general direction of the draft Strategy. Others had not had time to navigate the 180 page document. Many attendees were incredibly frustrated with the lack of capacity and time to provide feedback ("*Putting a submission through by 20th October is a huge and shitty process and I am not sure where to start*").

On a personal note - it is important to note that our hapū and iwi reps across the sub-region are overwhelmed, particularly with overlapping local and central government consultation processes, together with limited time and resourcing to participate effectively. If you do not receive much feedback on the draft Strategy from tāngata whenua, it could be more of an indication of lack of capacity rather than a lack of interest or concern.

What was the feedback?

Feedback about sub-regional growth

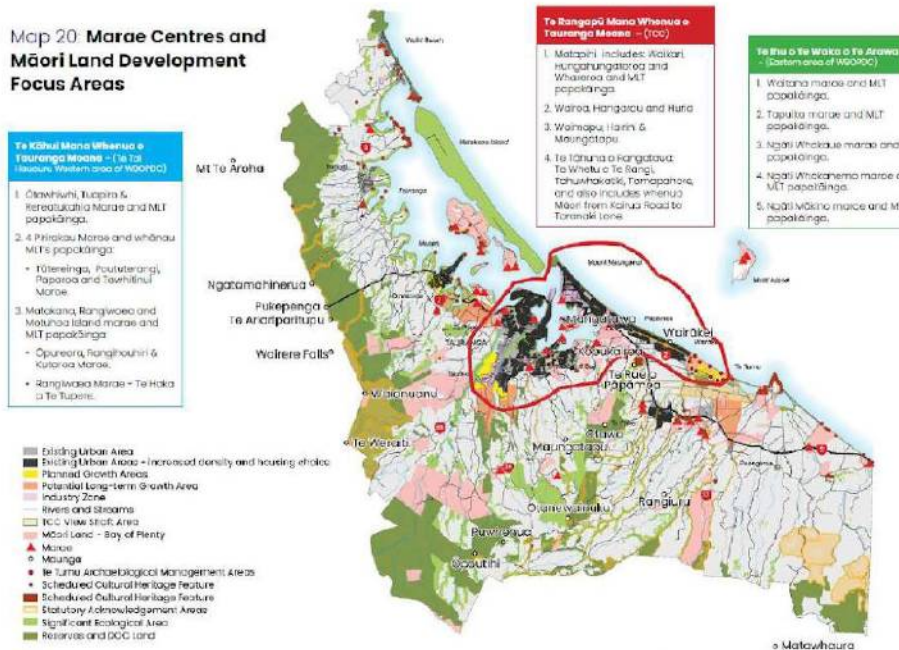
- How can we manage growth and provide houses for others, when we can't currently and adequately provide homes for our own? Where's the manaakitanga and kotahitanga?
- Māori are already overrepresented in the worst statistics relating to employment, income, housing and homelessness.
- Increasing the supply of housing/rentals is good but needs to cater for the range of needs, especially lower income.
- The SmartGrowth Strategy needs to ensure that Māori are not left further behind.
- We need to ensure that manuhiri are not prioritised over mana whenua.
- We need affordable rentals and homes in urban areas as well as the ability to build on our whenua.
- Our current population requires priority over future population.
- Is there sufficient capacity within the natural environment to handle more people? Is there sufficient water supply for a growing population? We need to ensure that our waterways and aquifers are kept healthy and not stressed by overabstraction.

- Need to ensure a whole systems approach, from maunga ki te moana.

Feedback about the draft Strategy

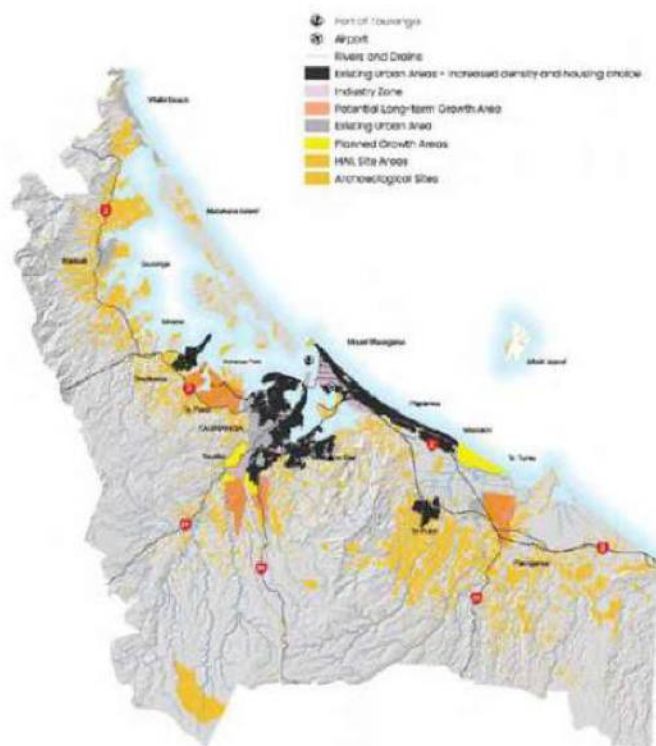
- The consultation process on the draft Strategy was too short.
- Strategy implementation is critical and needs to be resourced well.
- Support reference to CTWF outcomes and proposed Marae Centres and Māori Land Development Focus. SmartGrowth needs to ensure that this is adequately funded so that it is as successful and results in tangible outcomes for our people. Need to build capacity and capability within tāngata whenua to ensure success is long-lasting. Matapihi would benefit from tāngata whenua-led spatial planning.

Map 20: Marae Centres and Māori Land Development Focus Areas



- Resource consent processes need to be streamlined. We want to be able to respond quickly to the growing needs of our whanau, especially those who can't afford to rent/buy and to enable those who want to move home.
- In relation to Māori land development:
 - Infrastructure is just as huge a cost as paying for a house.
 - Hopefully someone can fight for us and win a "no rates to pay on Māori Land and "slice down the water rates cost for Māori land dwellers. Have a Maori bank for whanau wanting or needing to build a comfortable home on their land with reasonable price infrastructure .
- Don't forget the role of whakatauki within the strategy. They are a reflection of our values based on our tupuna. For example:
 - Whatungarongaro te tangata, toitū te whenua - As man disappears from sight, the land remains.
 - Te oranga o te tangata, he whenua./he taiao – The health of the people is drawn from the land/environment.
 - He aha te mea nui te ao? He tangata he tangata, he tangata! What truly matters in life - it is the people, the people, the people!
- Map 2c - there is discomfort that archaeological sites and HAIL sites are on the same map. There is no need for them to be displayed together. Suggest separating.

Map 2c:

'Go Carefully' – Hazardous Activities and Industries List and Archaeological Sites

Although I am a member of the Strategy Working Group, I am more than happy to speak to the matters outlined in this email at the December hearings.

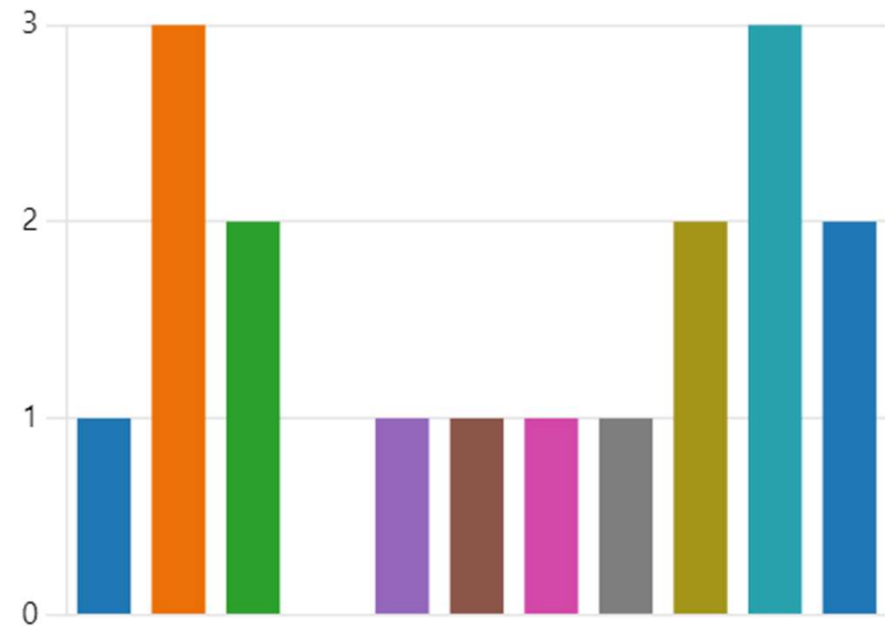
Nga mihi

Elva Conroy
 SmartGrowth Tu Pakari - Kai Arahi (Technical Advisor)
 022 070 4652

Outcomes of recent CTWF survey

● No longer a member	1
● Limited time / capacity	3
● Other priorities	2
● Not interesting or worth my time	0
● The CTWF is ineffective	1
● No trust in SmartGrowth	1
● Not relevant for my hapū / Iwi	1
● Prefer to work through Council-...	1
● Prefer to work directly with Cou...	2
● Not applicable	3
● Other	2

If you don't attend the CTWF meetings regularly (or at all), what are your reasons?



Outcomes of recent CTWF survey

CTWF perception: How strongly do you agree or disagree with the following statements?

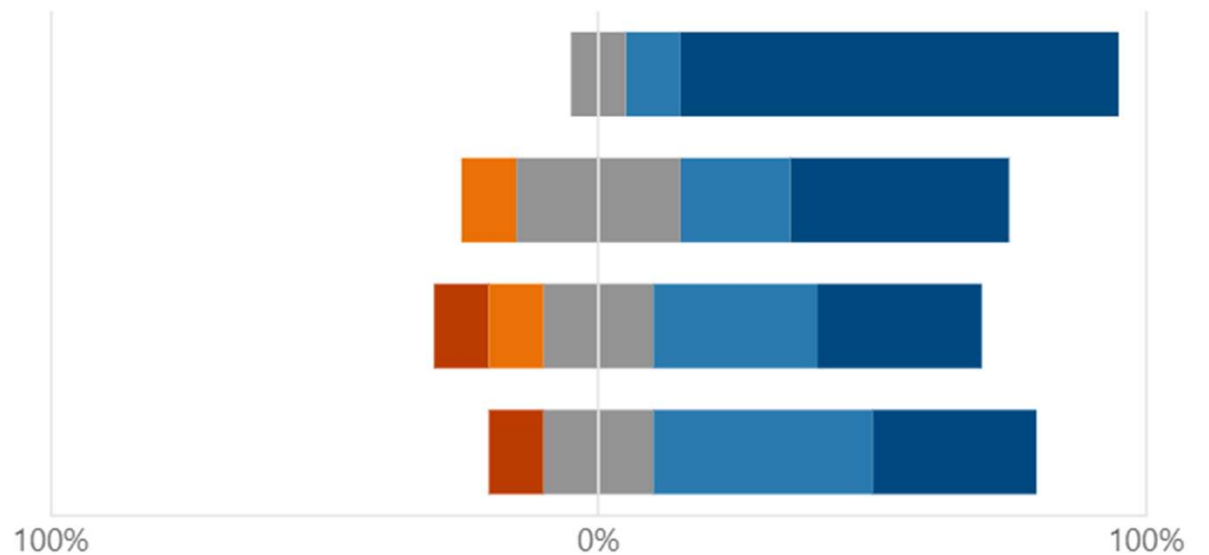
Strongly disagree Disagree Neither agree nor disagree Agree Strongly agree

The CTWF is an essential part of SmartGrowth

The CTWF makes a difference within SmartGrowth

Our values and aspirations are evident within SmartGrowth

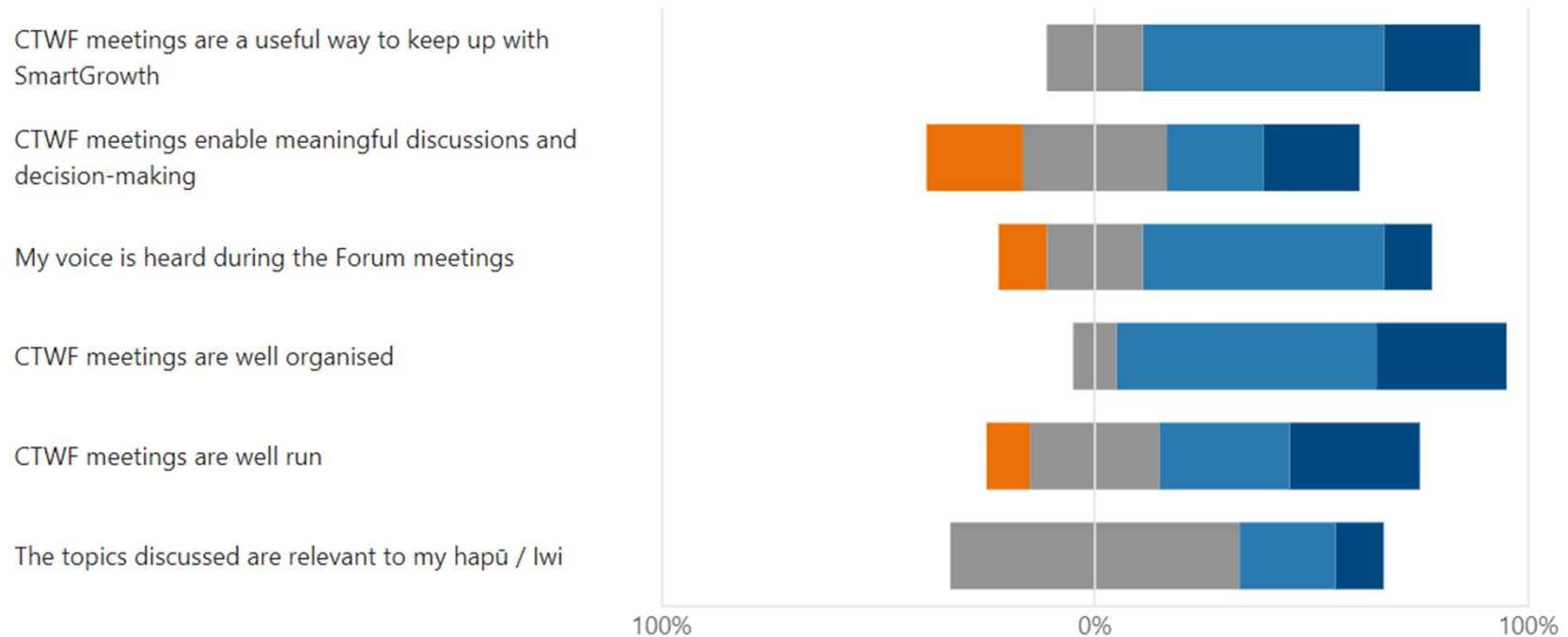
We are a valued partner within SmartGrowth



Outcomes of recent CTWF survey

CTWF meetings: How strongly do you agree or disagree with the following statements?

Strongly disagree Disagree Neither agree nor disagree Agree Strongly agree



Outcomes of recent CTWF survey

What would you like to see MORE of at CTWF meetings?

Strategic Conversations and Aspirations:

Strategic conversation to deliver on the aspirations of tāngata whenua.

Evidence that iwi concerns are actively addressed.

Discussion on impediments to Tāngata Whenua outcomes and implementation.

Progress on Tāngata Whenua Spatial Plan.

Relevant Presentations and Updates:

Presentations on emerging issues and opportunities.

National and regional research updates.

Updates on housing and papakāinga developments on Māori land.

Site visits.



“ Kia Tū Pakari ai Tātou”

He Pitopito Korero

NŌ TE TĪMA
TŪ PAKARI



SMARTGROWTH TŪ PAKARI UPDATE - MAY 2023

A way of keeping tāngata whenua connected to the Combined Tāngata Whenua Forum (CTWF) and to the many projects associated with SmartGrowth.

Feel free to share this e-pānui with your whānau, hapū, marae committees, Iwi and wider networks.

1. Welcome to SmartGrowth

Firstly, he mihi maioha to our CTWF newbies: **Spencer Webster, Maihi Wihapi, Darlene Dinsdale and Andrea Webster**. Feel free to touch base with Te Pio or myself if you have any q's about SmartGrowth or the CTWF.

Secondly, a special welcome *back* to:

- **Craig Batchelar** - Acting Strategic Advisor, SmartGrowth (replacing Kelvin)
- **Antoine Coffin** - Spatial Planning Manager, Bay of Plenty Regional Council

1

Welcome to SmartGrowth

2

Information from the last CTWF Meeting 28 March

3

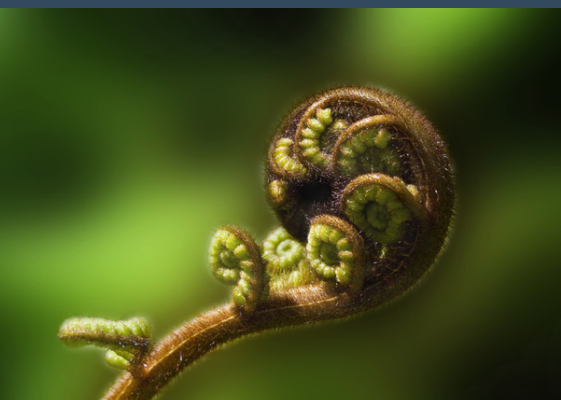
Next CTWF Meeting 26 May

4

SmartGrowth communication tools

5

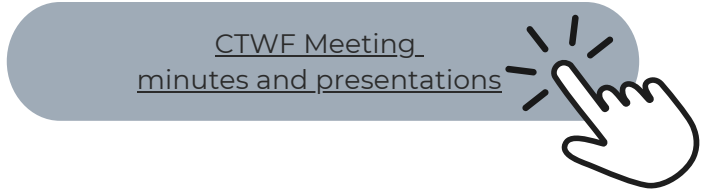
A win for Iwi-led Planning





2. Last CTWF Meeting

The last CTWF meeting was held on 28 March 2023. The minutes and associated documents, which were circulated on 20 April, can be accessed from the SmartGrowth Website (click [here](#)).



Key matters discussed:

CONFIRMATION OF SLG REPRESENTATIVES

Whitiara McLeod and Riki Nelson were confirmed as tangata whenua representatives on the SmartGrowth Leadership Group. They will join Matire Duncan, Geoff Rice and Matemoana McDonald (alternate).

CTWF Workplan and Way of Working for 2023

CTWF reps confirmed the following priorities for 2023:

- Continue working on (1) Realise Māori housing; (2) Spatial planning; (3) Cultural heritage research; (4) Implementation of the Transport System Plan
- Add (5) Treaty-based partnership within SmartGrowth as a new priority focus area. Whiti to lead.

CTWF Priorities & Projects

10:00 Confirmation of CTWF Projects and way of working for 2023

What are our priorities for 2023?

How can we improve our way of working?
Workshops vs meetings?

How can we improve our way of sharing what we're doing?
Is the e-panui enough?

The 2023 CTWF priorities are provided overleaf.

CTWF reps were also keen on holding kaupapa-specific workshops for focused discussion.

A CTWF workshop, focused on the SmartGrowth Strategy, is scheduled for **Friday 26 May** (immediately following the 1hr CTWF meeting).



2023 Priorities for the Combined Tāngata Whenua Forum

In 2023, the CTWF will focus on the following priority areas:

- 🌀 Spatial Planning led by, and/or involving tāngata whenua
- 🌀 Realising Māori Housing aspirations
- 🌀 Carrying out Cultural Heritage Research
- 🌀 Transport System Plan implementation
- 🌀 Ensuring a Treaty-based partnership within SmartGrowth

To support all of the above, we need:

- To build our collective capability and capacity.
- Effective communication and engagement with hapū, iwi, marae committees and Māori Land entities.
- Support from SmartGrowth partner agencies.



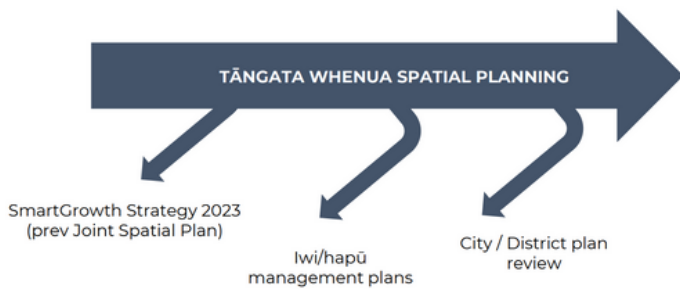
Māori Housing

Te Pio recapped the stages for development in Māori housing and Marae communities with the help of SmartGrowth.

Focus for 2023:

- Engagement with interested land blocks.
- Ara Rau Tangata

Timeframes: 12 - 18 months, Whānau host hui and wananga during phases 1 & 2.			12 - 24 months, Trust / whanau hui continue, the Trust engages planning, engineering / technical team and project manager.			
Phases:	1	2	3	4	5	6
Whenua Māori & Land Trusts	Establish Ahu Whenua Trust kaupapa / vision for papakāinga	Concept Plan: future land uses, based on social, eco and taiao values	Structure Planning: develop full civil services & consents	Business case to fund detailed papakāinga infrastructure plan	Business case for homeownership / rental housing options	Whanau building homes on their whenua
Ahu Whenua Land Trusts in the WBOP subregion	Funding for WBOP Papakāinga workshops	Funding for Trusts to develop individual concept design and layout plans	Funding for detailed infrastructure design drawings & plans and appropriate consents	Funding required to construct / build the infrastructure / civil services	Trusts / individuals seek funding for housing options for rental and or homeownership	Tender construction and building of new homes on the whenua.
	Whanau wananga / hui	Engagement and procurement of whanau members with the appropriate planning, trade, and management skills and expertise with papakāinga housing development projects may be engaged / contracted to deliver specific services.				
		Engage local consultants as technical advisors develop plans that meet council planning, development standards and consent requirements		Business case and funding applications are prepared and developed by local consultants and the Trusts project manager.		Construction phases should explore whanau procurement options



Spatial Planning

Elva reiterated that the outputs from tāngata whenua spatial planning can feed into many areas e.g. SmartGrowth Strategy, Iwi/hapu Management Plans, review of City and District Plans.

OUR COLLECTIVE OUTCOMES

TE WHENUA
Our people are enabled to occupy, develop and use multiple owned Māori Land and Treaty Settlement Land.

TE NGĀKAU
Our marae communities are connected to social and health services, education and sporting facilities, and where practical, public transport.

TE TAIAO
The health and wellbeing of our natural environment is not compromised further as a result of land use and development.

NGĀ WĀHI TŪPUNA
Our sites and areas of cultural significance are cared for and protected from further degradation and loss.

TE MANAWAROA
Our communities and cultural infrastructure are resilient to a changing climate.

MAPS

Clusters of potential land blocks for papakāinga

Marae community clusters

Potential areas for new marae / urupa

Areas at risk

Focus for 2023:

- Continued engagement for Māori housing / tāngata whenua spatial planning
- Content analysis and mapping in relation to the CTWF outcomes
- Input into the SmartGrowth Strategy 2023

3. Next CTWF Meeting

Our next CTWF gathering will be on Friday 26 May at the WBOP District Council office and online.

Please email SmartGrowth Administration administration@smartgrowthbop.org.nz if you have not received a meeting invite.

Kaupapa for the morning:

9:30 CTWF Meeting
(1 hour)

- Appointment of Political Liaison for the SmartGrowth Strategy Process
- Update on the Industrial Land Study

10:30 CTWF Workshop
(2 hours)

- Informal and focused discussion about the draft SmartGrowth Strategy

4. SmartGrowth Communication Tools

SmartGrowth is in the process of developing better tools for communication purposes.

Examples include:

1. New and improved website
2. Use of storytelling videos (example to be shown at CTWF workshop)
3. Use of storymaps to tell / show the SmartGrowth "connected centres" story

5. A WIN FOR IWI-LED PLANNING



At this year's NZ Planning Institute Conference, this project won:

- Best Non-Statutory Plan
- Supreme Nancy Northcroft Award

In August last year, Roana Bennett presented to the CTWF about He Toka Tū Moana mō Maketu (Maketu climate change adaptation plan).



Click [here](#) for the project video

Click [here](#) for the plan



“ Kia Tū Pakari ai Tātou”

He Pitopito Korero

NŌ TE TĪMA
TŪ PAKARI



SMARTGROWTH TŪ PAKARI UPDATE - SEPT 2023

- 1 Tū Pakari Team Update
- 2 New SmartGrowth Chair
- 3 Last CTWF Meeting - 28 July
- 4 SmartGrowth Strategy
- 5 Next CTWF Meeting - 28 September

A way of keeping tāngata whenua connected to the Combined Tāngata Whenua Forum (CTWF) and to the many projects associated with SmartGrowth.

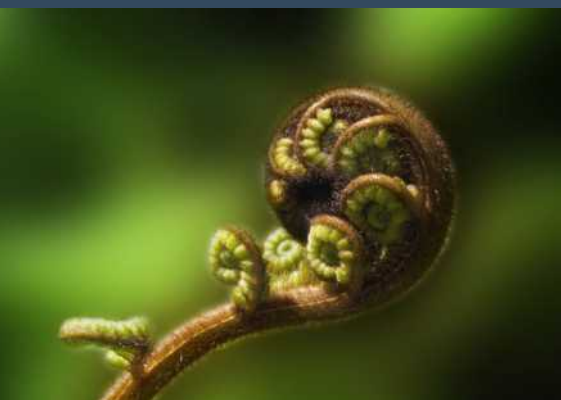
Feel free to share this e-pānui with your whānau, hapū, marae committees, Iwi and wider networks.

1. Tū Pakari Team Update

A warm welcome to new CTWF members: Rana Witeri, Tui Henry, Lorin Waetford and Spencer Webster.

Apologies for the lack of regular e-pānui updates. The Tū Pakari Team have been exceptionally busy lately with the draft SmartGrowth Strategy and progressing the Māori housing mahi. Elva has also reduced her capacity from 20 to 16 hours per week.

We will endeavour to send out our e-pānui more regularly – at least once in between CTWF meetings.





2. New SmartGrowth Chair



A warm welcome to Andrew Turner as new Independent Chair for SmartGrowth.

Andrew, the former Deputy Mayor of Christchurch, has significant experience in governance and has held several directorships and board positions. He is Chair of Te Toi Mahana – the Wellington Community Housing Trust.

3. Last CTWF Meeting

The last CTWF meeting was held on 28 July.

We had a number of guest presenters, including:

- **Glen Crowther (Sustainable BOP Charitable Trust)** who spoke about key sustainability and climate change priorities as they relate to SmartGrowth.
- **Kaylene Meyer (Waka Kotahi)** who provided an overview of the Business Case recently prepared for the Tauriko SH29 Network.
- **Tania Lund, Neville Goodwin, Angela Pointon and Cynthia Turuwhenua (Transpower or PowerCo)** to talk about the combined Plan for Western Bay of Plenty to accommodate future demand for electricity.

We also had another session with the SmartGrowth Strategy team and covered off a number of kaupapa including:

- **Transformational Shifts** and underlying principle of **Ngā Wai ki Mauao me Maketu**.
- **Future Development Strategy**, which will be part of the new SmartGrowth Strategy.
- **Approach for Māori Housing** within the Strategy.
- **Special Consultative Procedure** to be used to consider submissions to the draft Strategy. Matire Duncan is the tāngata whenua representative on the hearing panel.

All speakers prepared presentation slides. These slides, along with the minutes, can be downloaded from the SmartGrowth Website (refer link above).

[CTWF Meeting
minutes and presentations](#)



"Ki te kahore he
whakakitenga ka ngaro te iwi"

"Without foresight or vision
the people will be lost"

4. SmartGrowth Strategy

Last week the SmartGrowth Leadership Group approved to release the draft SmartGrowth Strategy. Take a look and share your thoughts by **20 October 2023**.



[Link to draft
SmartGrowth Strategy.](#)



[Link to SmartGrowth
StoryMap](#)



A reminder: What is it?

We know that we have a housing crisis, together with a growing population; transport challenges as well a changing climate.

The SmartGrowth Strategy is a 50-year high level strategic document to manage growth in an integrated, coordinated and collaborative way. It will build on past SmartGrowth plans and strategies, including the 2013 Strategy and draft Joint Spatial Plan (2021).

What will it do?

The Strategy will:

- look at the Tauranga and Western Bay of Plenty districts as a whole.
- consider housing, infrastructure, transport, community development, tāngata whenua values and aspirations, and the environment together to achieve effective long term growth.
- ensure a collaborative approach, involving tāngata whenua, Councils and Central Government agencies.

How many new homes are needed?

The Western BOP sub-region is one of the fastest growing areas of Aotearoa. The population is projected to be 300,000 people by 2050. We will need up to 43,000 new homes.



What is in it?

The Strategy is made of multiple parts:

1. Spatial Plan & Maps
2. Future Development Strategy (or FDS)

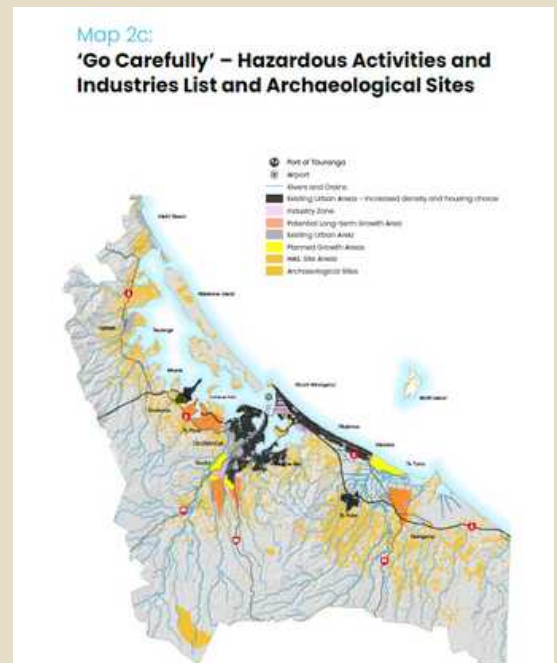
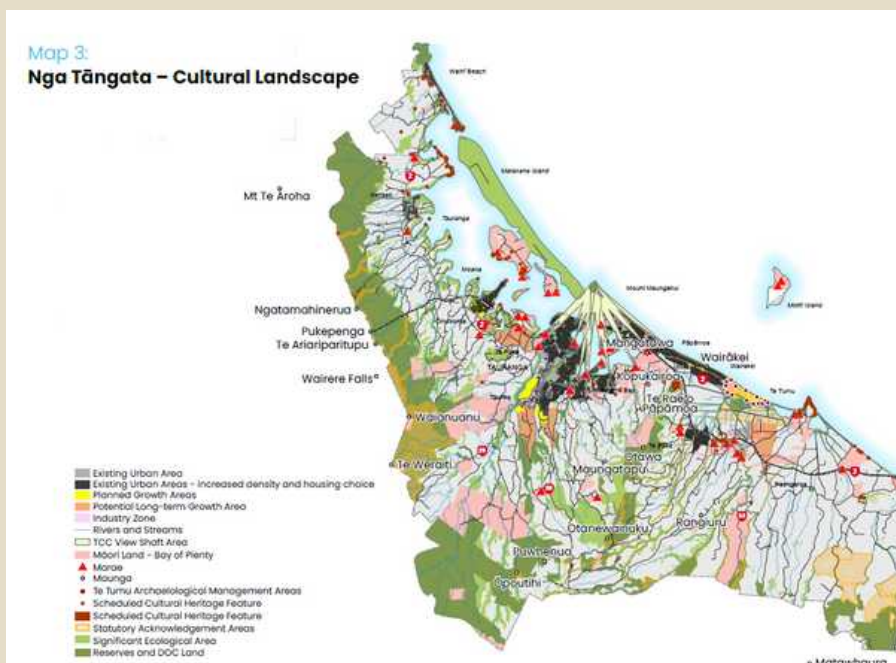
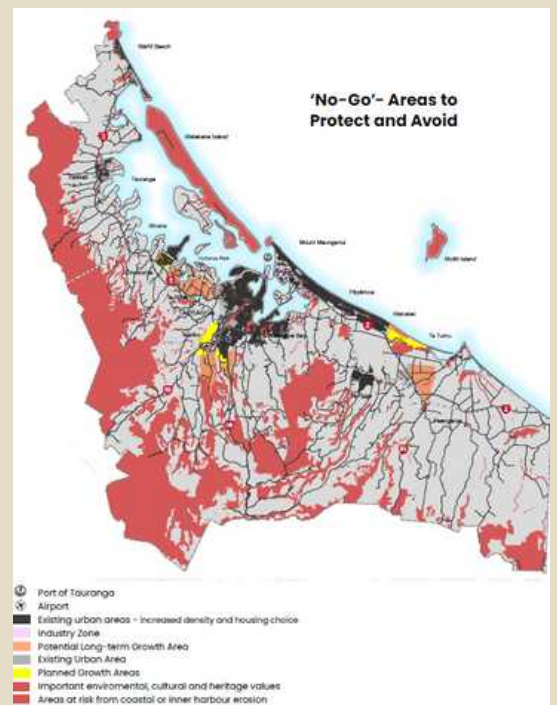
An Implementation and Funding Plan will be prepared separately to outline priority actions over a three-year period to make it all happen (e.g. funding and delivery, roles and responsibilities, and timing).

1. SPATIAL PLAN & MAPS

This identifies the natural and physical constraints to future development. It includes:

- the 'No-Go' areas to protect and avoid.
- the sensitive areas that require a 'Go Carefully',
- precautionary approach to urban growth.

It also discusses tāngata whenua values and aspirations, Te Taiao, climate resilience, rural resources, urban form, housing, transport, network and social infrastructure, and economic wellbeing.

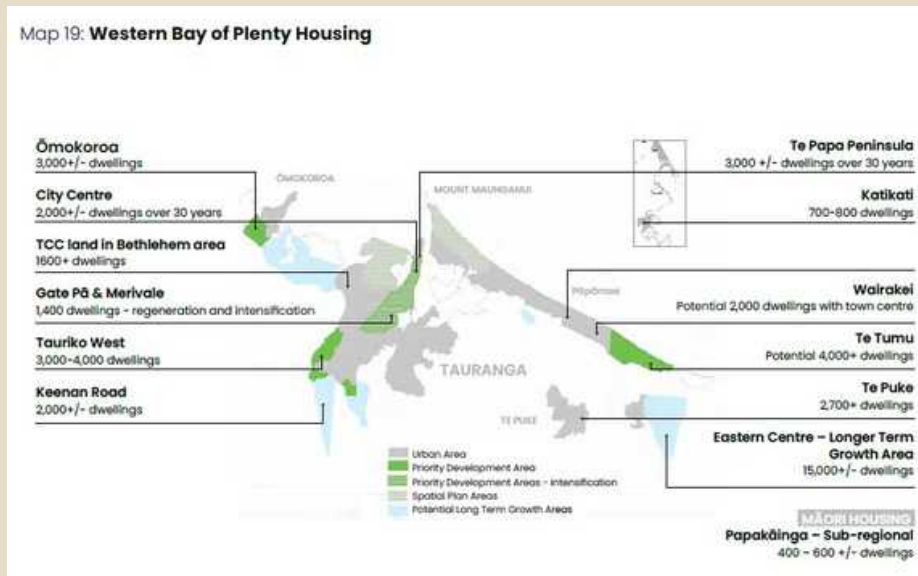
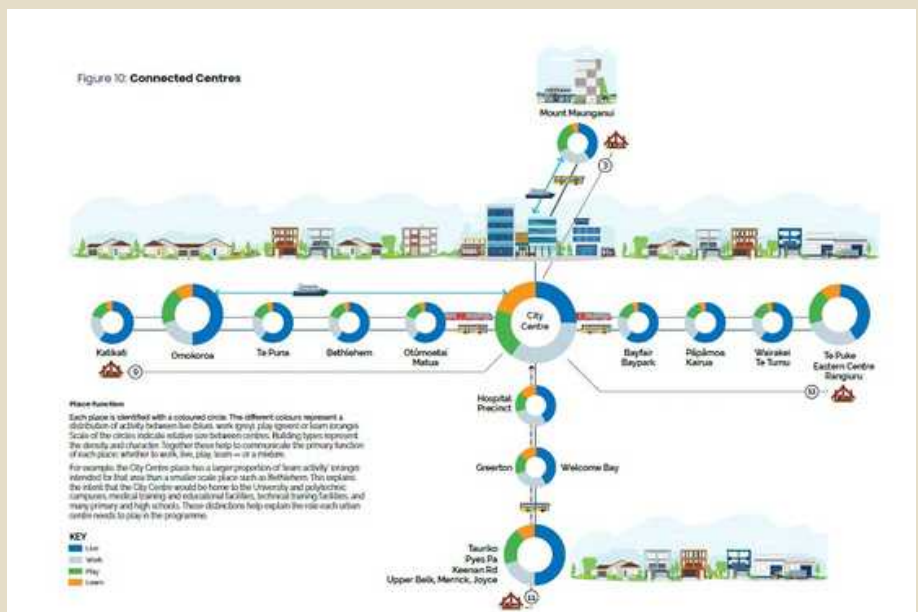
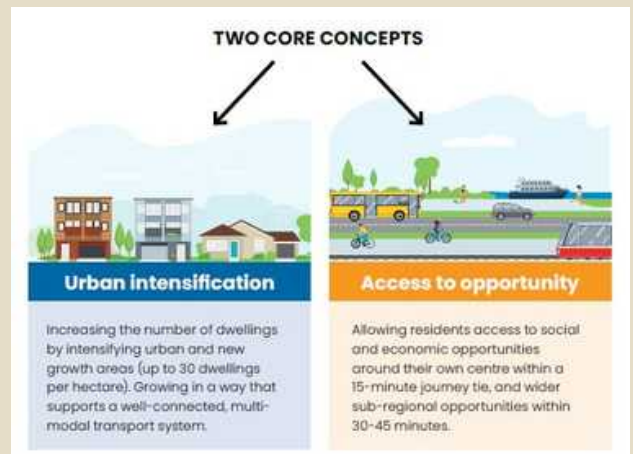




2. FUTURE DEVELOPMENT STRATEGY (OR FDS)

This is 30-year plan that identifies the housing/business land and infrastructure specifically needed developing both 'up' through intensification, and 'out' through greenfields.

The FDS is a specific requirement of the National Policy Statement for Urban Development.



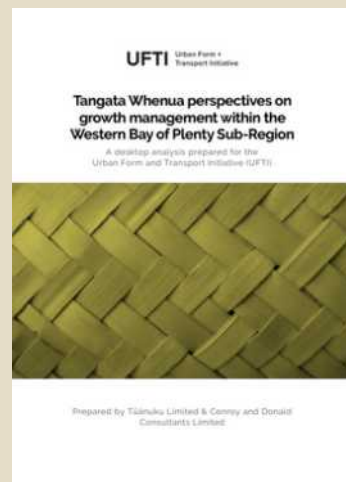
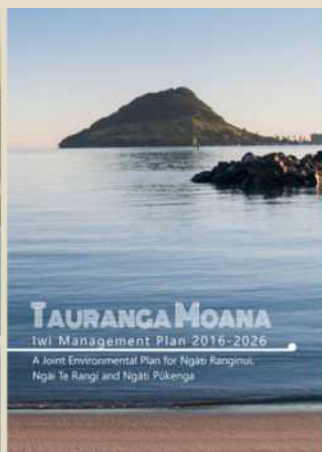
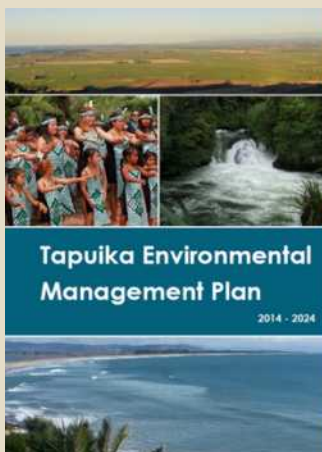


What involvement has the CTWF had in developing the draft Strategy?

The Strategy has been discussed at the CTWF several times over the last 12 months. Previous iterations (known as the Joint Spatial Plan) were also presented to the CTWF in 2021.

Content within the Strategy relating to tāngata whenua values, aspirations and actions has been developed using:

- CTWF vision and outcomes.
- Past CTWF technical reports.
- Iwi and hapū Management Plans.
- Feedback provided:
 - during CTWF meetings.
 - during the three 'He Tirohanga Matawhanui' hui in late 2022.
 - by Māori Land Trusts, via Ara Rau Tāngata, in relation to papakāinga and development on Māori Land.





What does this Strategy do for tāngata whenua?

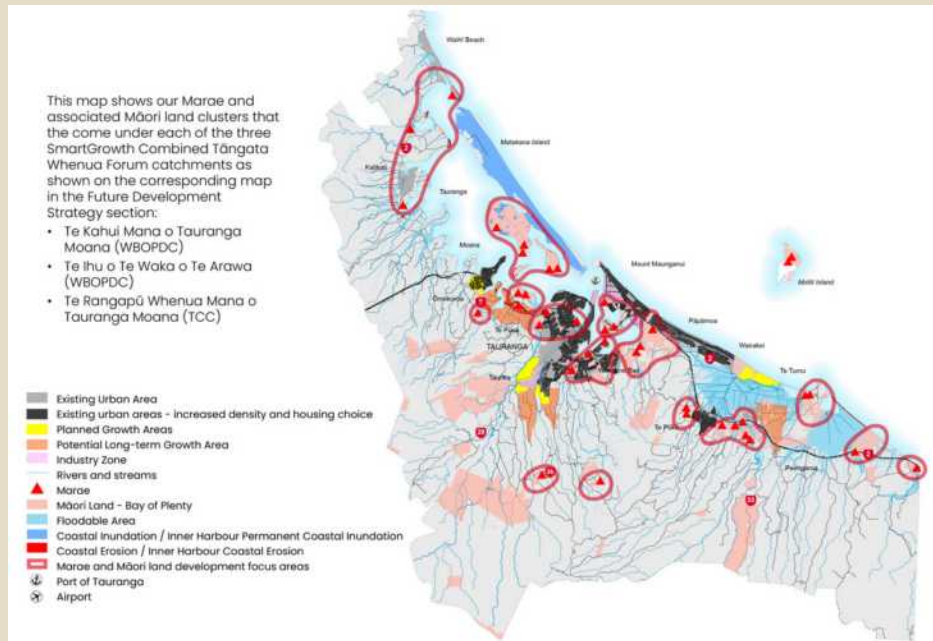
- Greater recognition of tāngata whenua values (right) and the underlying principle of Ngā Wai ki Mauao me Maketu (refer overleaf).
- The connected centres programmes is focused on urban areas. However, many of our marae are in rural areas. For this reason, the draft Strategy recognises marae as important centres for tāngata whenua. It is listed as Transformational Shift #2 within the draft Strategy.
- Content relating to tāngata whenua is not just limited to the tāngata whenua chapter (p58). Tāngata whenua challenges and aspirations are weaved across many of the topic chapters e.g. housing, rural, economic development.
- A marae or hapū-centric approach is proposed to support affordable development of housing, opportunities for papakāinga (housing, education, social, hauora facilities). This directly links with the CTWF Māori housing and tāngata whenua spatial planning work programmes.

Manaakitanga – respect and care for others:

We build warm and affordable homes and communities for all socioeconomic backgrounds. We also are good ancestors who plan and make decisions for our mokopuna and future generations.

Kaitiakitanga – environmental responsibility and reciprocity:

We are dependent on the natural world for their well-being and survival and therefore have a responsibility to care for and protect the environment in return. We are good ancestors who leave the natural environment in a better state for our mokopuna and future generations. Environmental reciprocity involves moving away from an exploitative mindset and creating a more balanced relationship between human activity and nature to ensure the health and wellbeing of all.





What is meant by the principle “Ngā Wai ki Mauao me Maketu”?

The concept ‘Mountains to the Sea’ is well known however, we needed something specific for our area, hence , “Ngā Wai ki Mauao me Maketu”.

This principle is embedded with the Strategy; a commitment to environmental sustainability and responsibility. In other words, ensuring that population growth and social and economic development can be safely accommodated within natural resource limits.

This principle recognises:

- the interconnected nature of people and environment. Growth planning within the sub-region can have far-reaching impacts on both the well-being of communities and ecosystems.
- the connection within the environment from the maunga (mountains) to the moana (harbours and ocean), including ngāhere (forests), awa and manga (rivers and streams), repo (wetlands) and tāhuna (estuaries). This highlights the importance of integrated catchment planning and taking into account cumulative impacts on the natural environment.
- the cultural significance of the two landmarks to the many hapū and Iwi of the sub-region: Mauao as the visual and cultural icon to all who live in Tauranga Moana; and Maketu as the landing place of Te Arawa waka.

What is happening with the Tāngata Whenua Spatial Planning project?

We have been talking about the Tāngata Whenua Spatial Planning project for a number of years. Progress has slowed due to the limited capacity within the Tu Pakari team and the availability of contractors to support hapū and Māori Land Trust engagement.



How can I provide feedback to the draft Strategy?

Share your thoughts via an option that suits you best:

- **Online** - head to the [web page](#) to check out the draft strategy and/or fill out a feedback form.
- **Hard copy** – printed feedback forms are available at all council libraries and service centres.
- **Face to face kanohi ki te kanohi**

Date: 4-6 December 2023

Venue: Council chambers, Western Bay of Plenty District Council

Email haveyoursay@westernbay.govt.nz to register your interest.



5. Next CTWF Meeting - 27 September

Our next CTWF hui will be on **Wednesday 27 September** at the WBOP District Council office and online.

The agenda is still being finalised; however, we are looking at the hosting a number of guest presenters:

- Hewletts Road Community
- Quayside Holdings Ltd
- Ministry of Housing and Urban Development
- BOPRC Freshwater policy team

We will also have an updates from our tāngata whenua representatives on the SmartGrowth Leadership Group, along with the SmartGrowth Strategy team.