



# Freshwater progress

*Te Kōrero o te rōpū whakahaere  
o te wai māori o Tauranga Moana*  
**The Tauranga Moana  
Freshwater Management Unit**

*The purpose of this booklet is to explain draft options to address requirements of the National Policy Statement for Freshwater Management 2020 (NPSFM) in the Draft Tauranga Moana Freshwater Management Unit (FMU). These options are to do with how we manage freshwater in Tauranga Moana to achieve outcomes the community wants there.*



**This booklet covers:**

- A description of the draft FMU
  - Freshwater management issues in this FMU
  - Options for:
    - A.** A long-term vision for freshwater;
    - B.** Proposed outcomes for key freshwater values;
    - C.** Water quality, ecosystem health and other issues and targets;
    - D.** Water take limits and minimum flows; and
    - E.** The kinds of rules and other methods being considered to achieve these things.
- We are early in the policy development process and are seeking feedback from the community to help inform the important decisions.

Your feedback to the questions inside this booklet can be provided in writing on the corresponding question sheet, online via our website or in person at one of our community events.

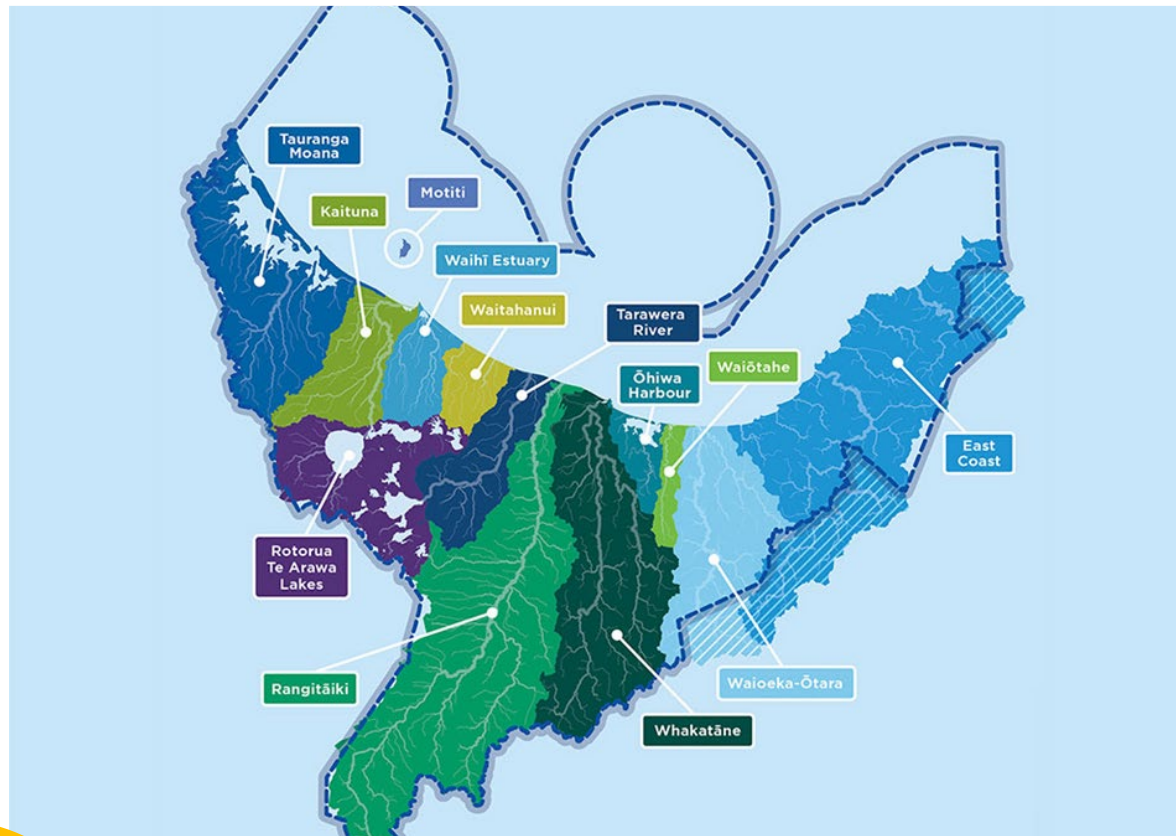


## Update on progress - Combined Tangata Whenua Forum

## 27 September 2023

# *Te Mana o Te Wai- Tirohanga whānui*

## Essential Freshwater Overview





# Te Mana o te Wai

- Te Mana o te Wai is a concept that refers to the fundamental importance of water and recognises that protecting the health of freshwater protects the health and well being of the wider environment.
- Hierarchy of obligations in TMOTW prioritises the health and well being of water bodies and freshwater ecosystems
- Encompasses the 6 principles of:
  - Mana whakahaere
  - Kaitiakitanga
  - Manaakitanga
  - Governance
  - Stewardship
  - Care and respect

**Te Mana o te Wai underpins all our NPSFM work**



# Tangata whenua engagement

- Hui-a-rohe held in May
- 26 participants attended Mauao event
- Further targeted engagement from September 2023
- Tangata whenua welcomed at community events
- Final Tauranga Moana community event held 20 September – Katikati



# Kaupapa Māori workstream

## Framework for future focussed plan - The idea of portals.....

- Challenge with tangata whenua rep time and band width to identify input to plan envisaged by NPSFM
- Propose approach that presumes the presence of cultural values and attributes that will influence consenting outcomes.
- ‘Portals’ into plan to enable future incorporation of values
- **On-going support for tangata whenua to generate/articulate/present mātauranga.**

# Key Water Quality issues

1. Water quality and ecosystem health in Little Waihi and Kaituna Estuary impacted by multiple factors – nutrients, turbidity, E.coli, ecosystem health.
2. Water quality is not always safe for swimming at monitored freshwater sites.
3. Sedimentation of Tauranga harbour.
4. Cultural indicators of health.



# Scale of change required - water quality

## Tauranga Moana

Nitrogen	Phosphorus	Sediment	<i>E. coli</i>
Small	Small	Moderate	High

## Waihi

Nitrogen	Phosphorus	Sediment	<i>E. coli</i>
High	High	High	High

## Kaituna

Nitrogen	Phosphorus	Sediment	<i>E. coli</i>
Small	Small	Small	Moderate

## Kaituna

Nitrogen	Phosphorus	Sediment	<i>E. coli</i>
High	High	High	High

## Waitahanui

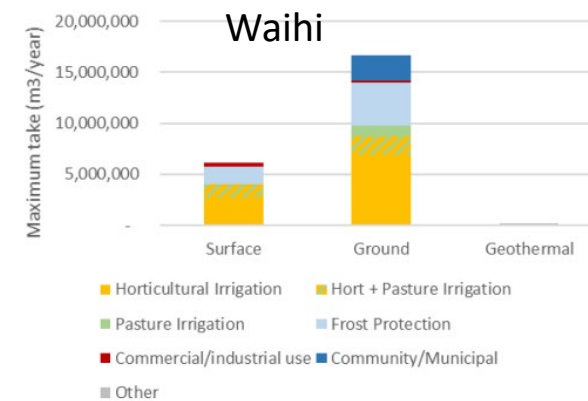
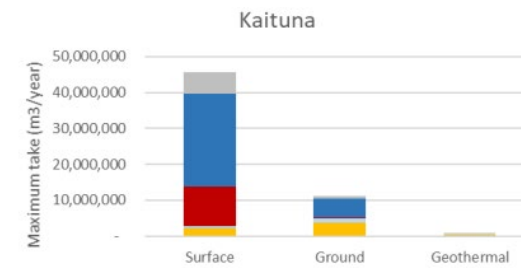
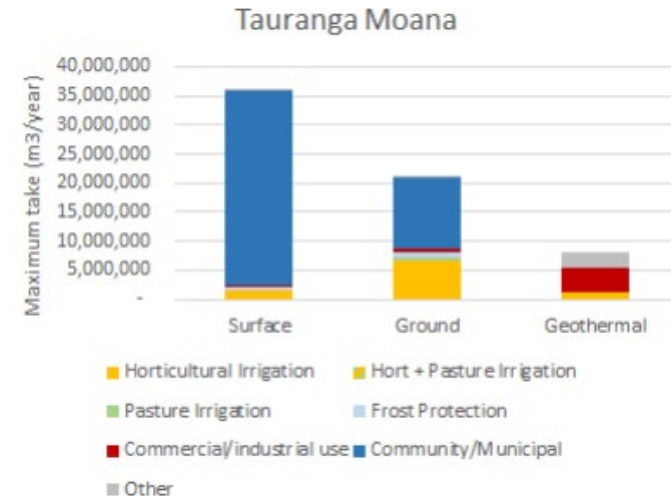
Nitrogen	Phosphorus	Sediment	<i>E. coli</i>
Small	Small	Small	Moderate

**KEY:** Indicative scale of change needed to improve water quality, or likely water quantity constraint.



# Water Quantity

- Volume dominated by municipal water takes
- Important horticultural, hydro electric and commercial uses
- Water also used as Permitted Activity or for drinking water without consent.





# New approach to limit setting in streams

- Current limits to allocation '1 size fits all' (10% of low flow)
- Sometimes, the limits are exceeded
- New approach – limits tailored maintaining levels of fish habitat
- Limit vary – depends on fish present and stream characteristics



# Surface Water Quantity issues



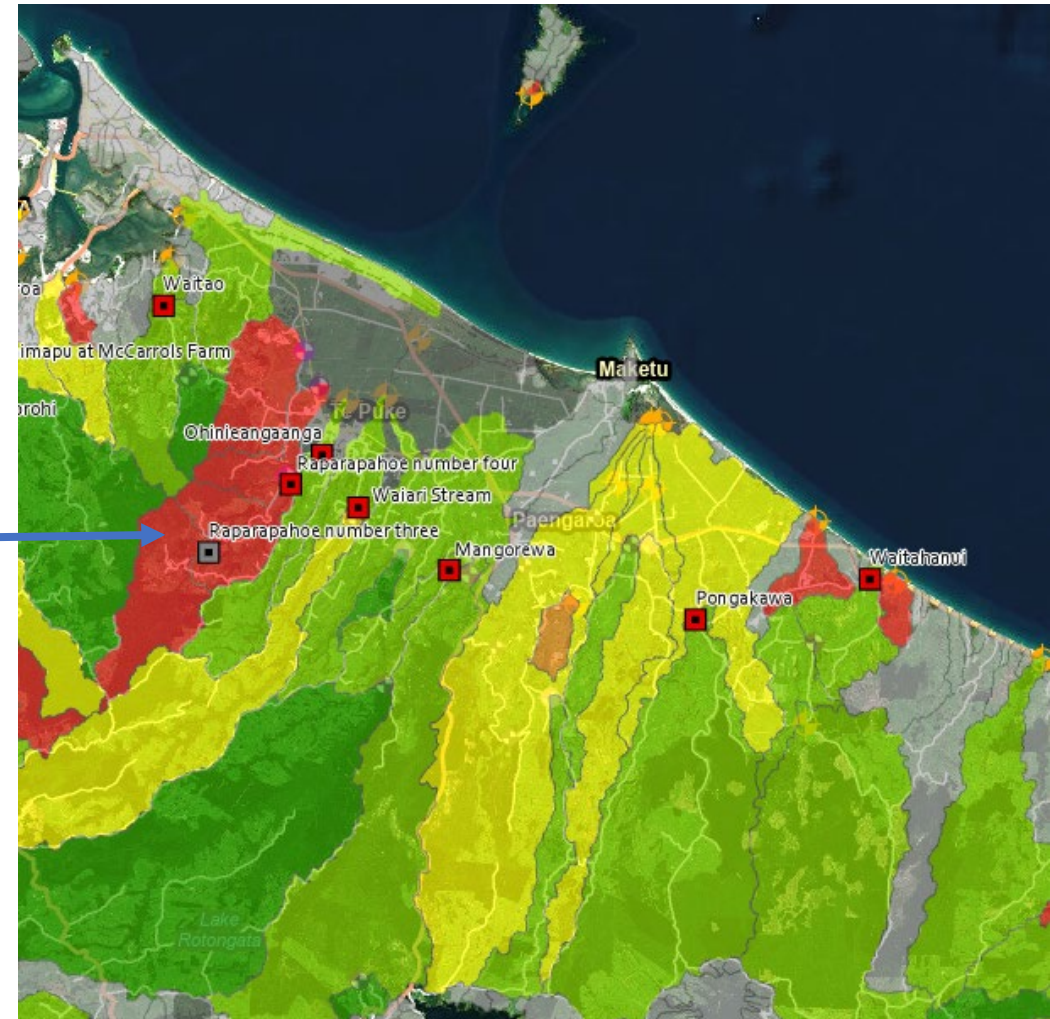
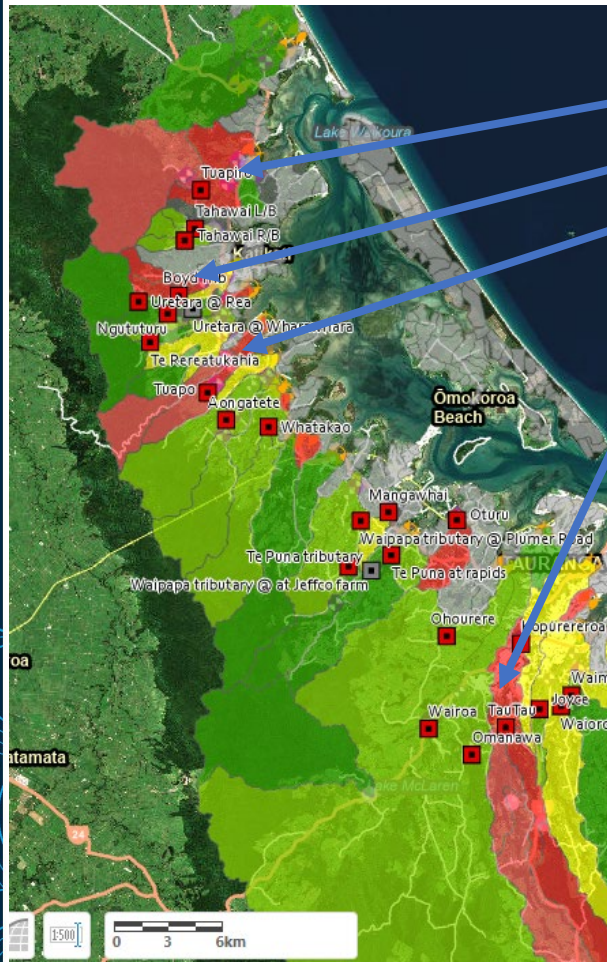
1. Some streams fully/over allocated.
2. Applying minimum flows will mean some allocation is unreliable.
3. Ensuring that users are not allocated more than they need (efficiency).
4. Important municipal takes in some over allocated streams

# Surface water allocation status -Tauranga, Kaituna, Waihi, Waitahanui

## Draft allocation status

### Over allocated

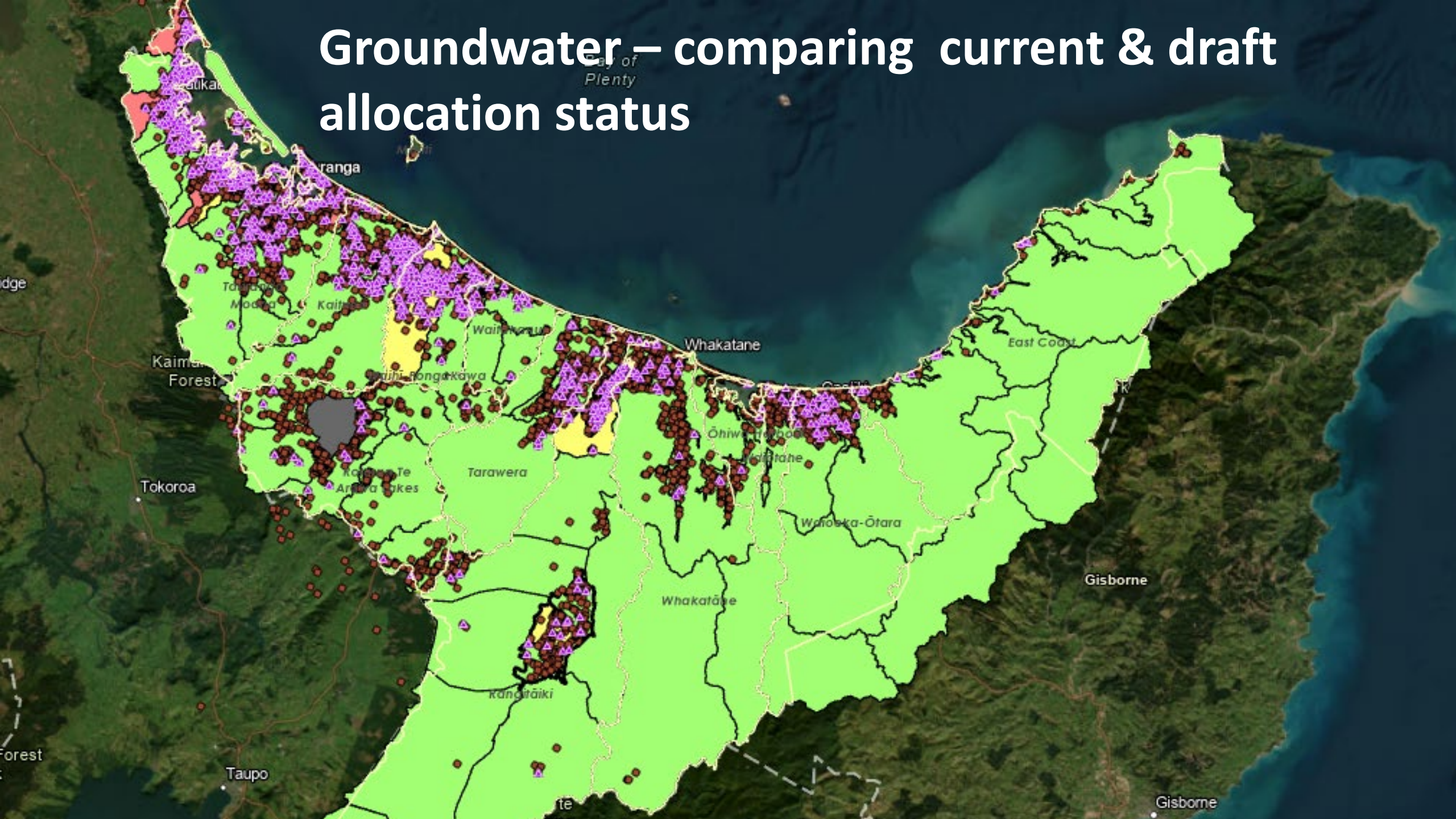
- Tuapiro
- Boyd
- Tuapo
- Tautau/Kopurererua
- Raparapahoe



# Groundwater allocation status - draft revised

- More resource consents for groundwater than surface water
- Groundwater limits maintain stream flow, stop saltwater intrusion and keep water levels in bores
- Current limits have been reviewed
- Draft limits significantly **reduces water availability** in northern Tauranga harbour – Katikati/Waihī Beach/Waipapa-Ōmokoroa, plus coastal area at Mount/Welcome Bay
- Draft limits significantly **increases water availability** in Kaituna, Waihī and Waitahanui zones.

# Groundwater – comparing current & draft allocation status



# Addressing over allocation

- NPSFM requires efficient allocation and use, phasing out over allocation, avoiding future over allocation
- Health needs of people (drinking water) prioritised above other uses
- Significant opportunities to improve efficiency
- New provisions being drafted support:
  - ✓ No new allocation in fully allocated resources
  - ✓ Secondary allocation and water storage
  - ✓ Catchment driven initiatives – rostering, water user groups, transfer
  - ✓ Consent review and common catchment review/expiry
- Clawback of efficiently used allocation in limited circumstances

# Identifying and achieving the values for each Freshwater Management Unit

- NPSFM requires a long-term vision for freshwater for each FMU
- Visions set out what tangata whenua and community want to achieve
- Visions should be ambitious, but reasonable
- NPSFM identifies compulsory values, and BOPRC must consider other values that apply
- Each value must identify an environmental outcome
- FMU booklets set out draft visions, values and outcomes for feedback – 30 September!

