



“ Kia Tū Pakari ai Tātou”

He Pitopito Korero

NŌ TE TĪMA
TŪ PAKARI



SMARTGROWTH TŪ PAKARI UPDATE - SEPT 2023

- 1 Tū Pakari Team Update
- 2 New SmartGrowth Chair
- 3 Last CTWF Meeting - 28 July
- 4 SmartGrowth Strategy
- 5 Next CTWF Meeting - 28 September

A way of keeping tāngata whenua connected to the Combined Tāngata Whenua Forum (CTWF) and to the many projects associated with SmartGrowth.

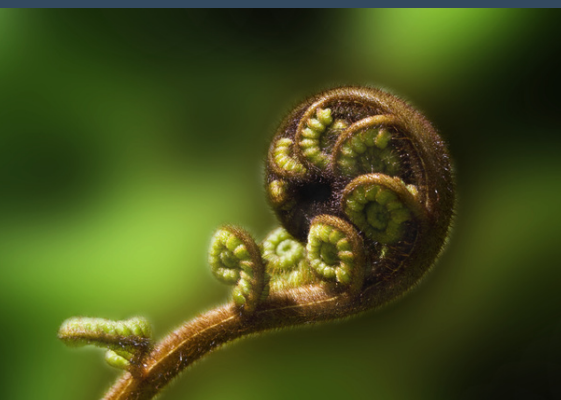
Feel free to share this e-pānui with your whānau, hapū, marae committees, Iwi and wider networks.

1. Tū Pakari Team Update

A warm welcome to new CTWF members: Rana Witeri, Tui Henry, Lorin Waetford and Spencer Webster.

Apologies for the lack of regular e-pānui updates. The Tū Pakari Team have been exceptionally busy lately with the draft SmartGrowth Strategy and progressing the Māori housing mahi. Elva has also reduced her capacity from 20 to 16 hours per week.

We will endeavour to send out our e-pānui more regularly – at least once in between CTWF meetings.





2. New SmartGrowth Chair



A warm welcome to Andrew Turner as new Independent Chair for SmartGrowth.

Andrew, the former Deputy Mayor of Christchurch, has significant experience in governance and has held several directorships and board positions. He is Chair of Te Toi Mahana – the Wellington Community Housing Trust.

3. Last CTWF Meeting

The last CTWF meeting was held on 28 July.

We had a number of guest presenters, including:

- **Glen Crowther (Sustainable BOP Charitable Trust)** who spoke about key sustainability and climate change priorities as they relate to SmartGrowth.
- **Kaylene Meyer (Waka Kotahi)** who provided an overview of the Business Case recently prepared for the Tauriko SH29 Network.
- **Tania Lund, Neville Goodwin, Angela Pointon and Cynthia Turuwhenua (Transpower or PowerCo)** to talk about the combined Plan for Western Bay of Plenty to accommodate future demand for electricity.

We also had another session with the SmartGrowth Strategy team and covered off a number of kaupapa including:

- **Transformational Shifts** and underlying principle of **Ngā Wai ki Mauao me Maketu**.
- **Future Development Strategy**, which will be part of the new SmartGrowth Strategy.
- **Approach for Māori Housing** within the Strategy.
- **Special Consultative Procedure** to be used to consider submissions to the draft Strategy. Matire Duncan is the tāngata whenua representative on the hearing panel.

All speakers prepared presentation slides. These slides, along with the minutes, can be downloaded from the SmartGrowth Website (refer link above).

[CTWF Meeting
minutes and presentations](#)



"Ki te kahore he
whakakitenga ka ngaro te iwi"

"Without foresight or vision
the people will be lost"

4. SmartGrowth Strategy

Last week the SmartGrowth Leadership Group approved to release the draft SmartGrowth Strategy. Take a look and share your thoughts by **20 October 2023**.



[Link to draft
SmartGrowth Strategy.](#)



[Link to SmartGrowth
StoryMap](#)



A reminder: What is it?

We know that we have a housing crisis, together with a growing population; transport challenges as well a changing climate.

The SmartGrowth Strategy is a 50-year high level strategic document to manage growth in an integrated, coordinated and collaborative way. It will build on past SmartGrowth plans and strategies, including the 2013 Strategy and draft Joint Spatial Plan (2021).

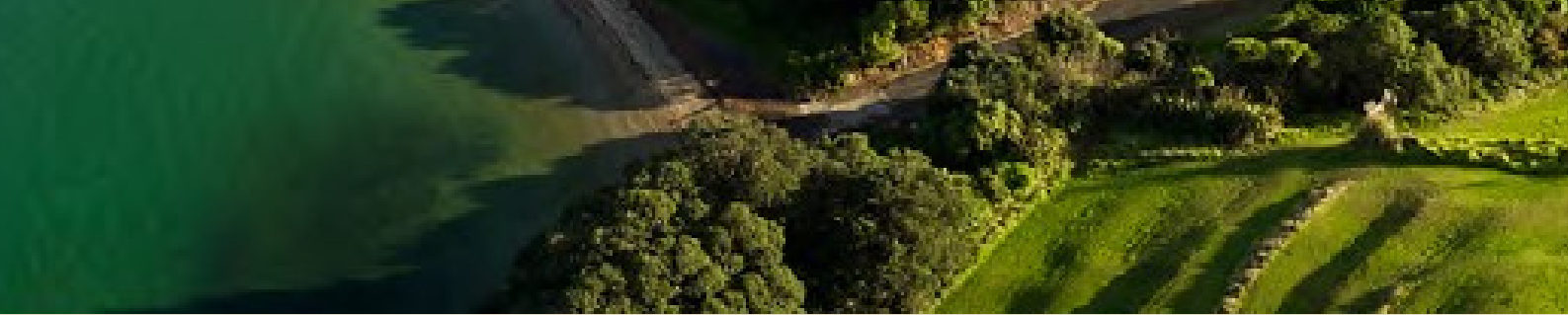
What will it do?

The Strategy will:

- look at the Tauranga and Western Bay of Plenty districts as a whole.
- consider housing, infrastructure, transport, community development, tāngata whenua values and aspirations, and the environment together to achieve effective long term growth.
- ensure a collaborative approach, involving tāngata whenua, Councils and Central Government agencies.

How many new homes are needed?

The Western BOP sub-region is one of the fastest growing areas of Aotearoa. The population is projected to be 300,000 people by 2050. We will need up to 43,000 new homes.



What is in it?

The Strategy is made of multiple parts:

1. Spatial Plan & Maps
2. Future Development Strategy (or FDS)

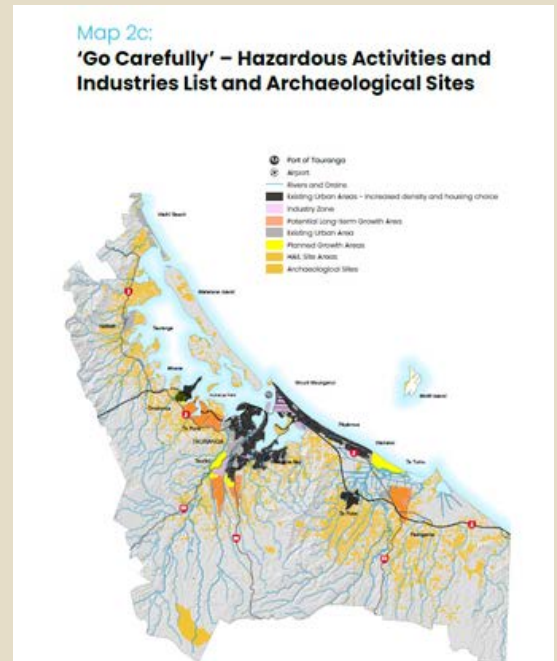
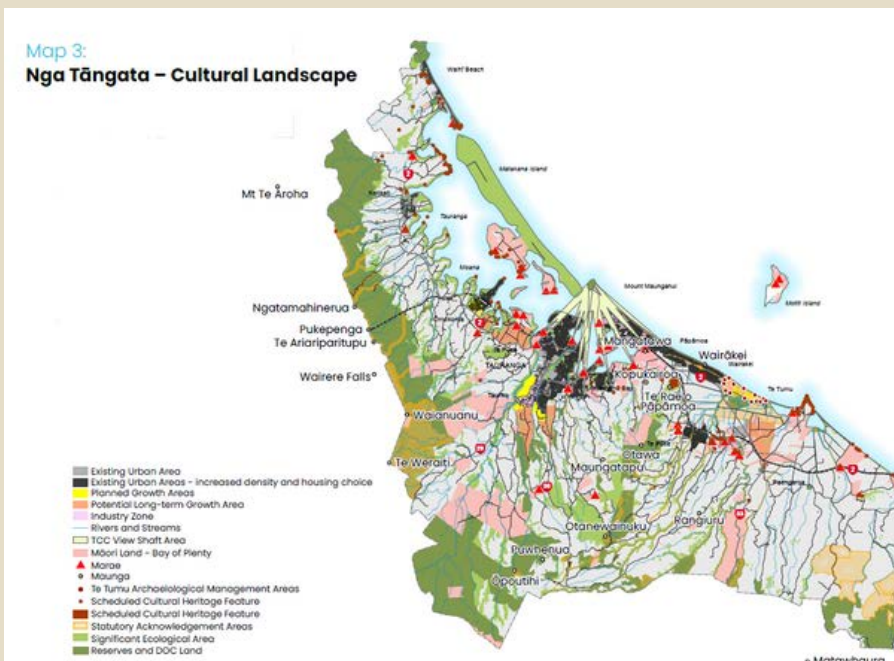
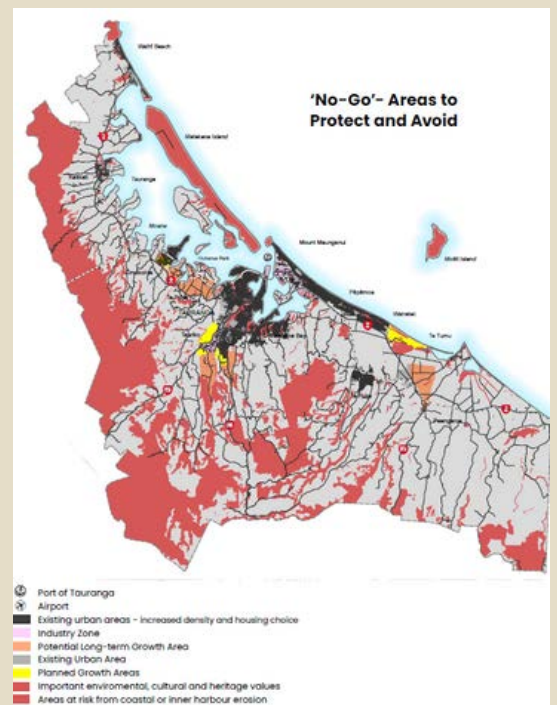
An Implementation and Funding Plan will be prepared separately to outline priority actions over a three-year period to make it all happen (e.g. funding and delivery, roles and responsibilities, and timing).

1. SPATIAL PLAN & MAPS

This identifies the natural and physical constraints to future development. It includes:

- the 'No-Go' areas to protect and avoid.
- the sensitive areas that require a 'Go Carefully',
- precautionary approach to urban growth.

It also discusses tāngata whenua values and aspirations, Te Taiao, climate resilience, rural resources, urban form, housing, transport, network and social infrastructure, and economic wellbeing.

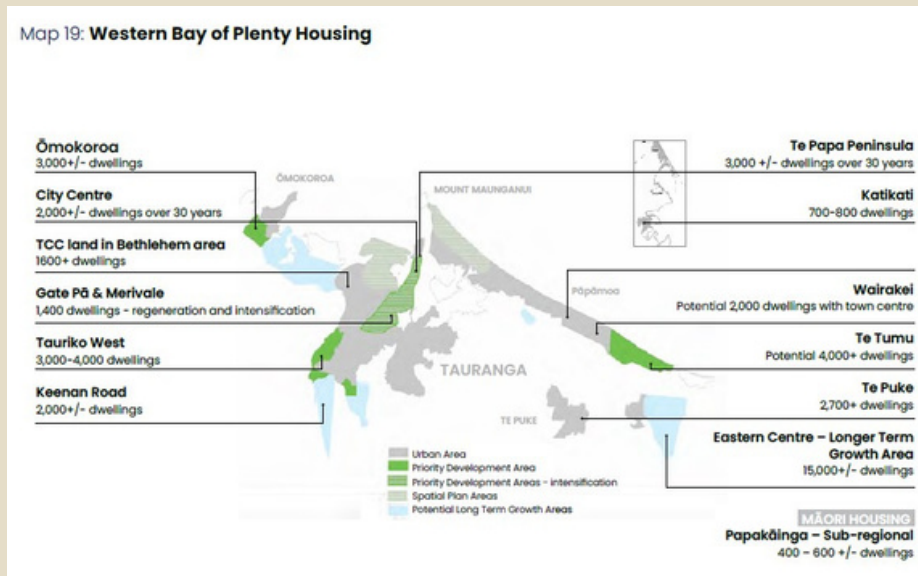
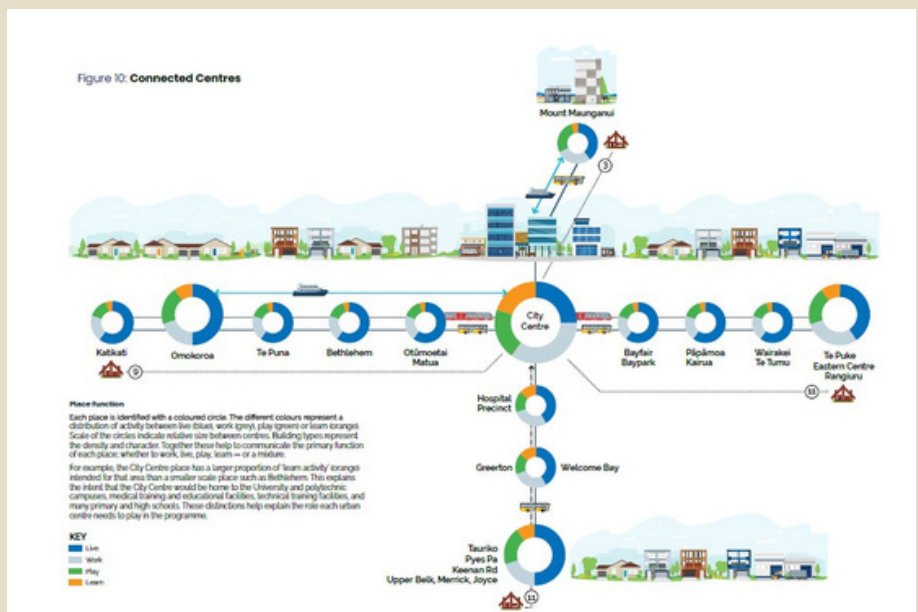
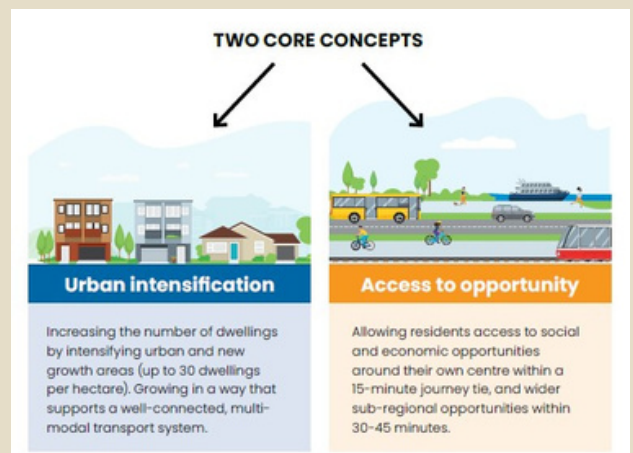




2. FUTURE DEVELOPMENT STRATEGY (OR FDS)

This is 30-year plan that identifies the housing/business land and infrastructure specifically needed developing both 'up' through intensification, and 'out' through greenfields.

The FDS is a specific requirement of the National Policy Statement for Urban Development.



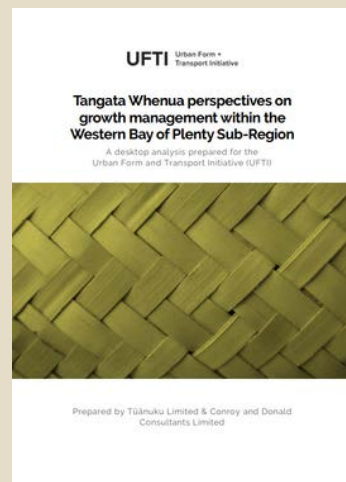
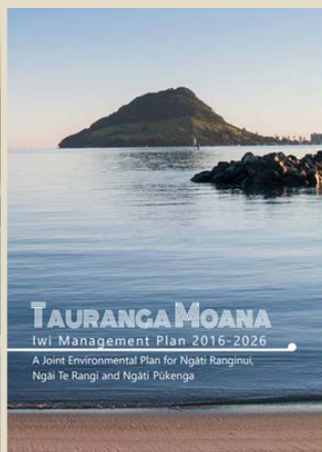
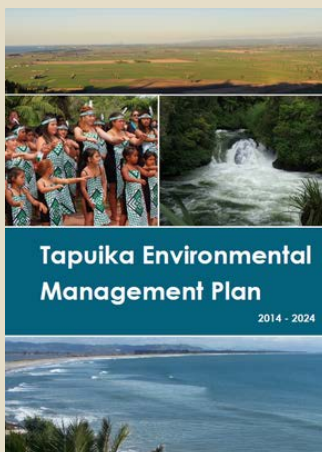
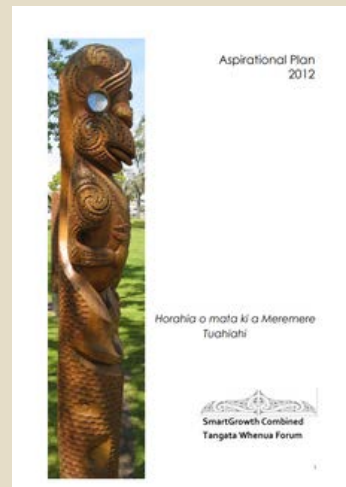


What involvement has the CTWF had in developing the draft Strategy?

The Strategy has been discussed at the CTWF several times over the last 12 months. Previous iterations (known as the Joint Spatial Plan) were also presented to the CTWF in 2021.

Content within the Strategy relating to tāngata whenua values, aspirations and actions has been developed using:

- CTWF vision and outcomes.
- Past CTWF technical reports.
- Iwi and hapū Management Plans.
- Feedback provided:
 - during CTWF meetings.
 - during the three 'He Tirohanga Matawhanui' hui in late 2022.
 - by Māori Land Trusts, via Ara Rau Tāngata, in relation to papakāinga and development on Māori Land.





What does this Strategy do for tāngata whenua?

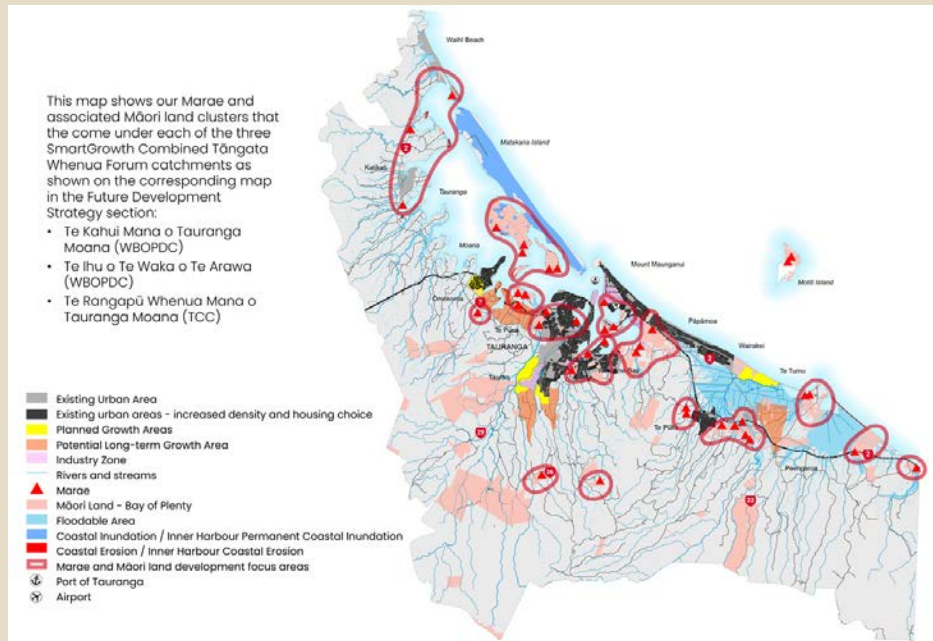
- Greater recognition of tāngata whenua values (right) and the underlying principle of Ngā Wai ki Mauao me Maketu (refer overleaf).
- The connected centres programmes is focused on urban areas. However, many of our marae are in rural areas. For this reason, the draft Strategy recognises marae as important centres for tāngata whenua. It is listed as Transformational Shift #2 within the draft Strategy.
- Content relating to tāngata whenua is not just limited to the tāngata whenua chapter (p58). Tāngata whenua challenges and aspirations are weaved across many of the topic chapters e.g. housing, rural, economic development.
- A marae or hapū-centric approach is proposed to support affordable development of housing, opportunities for papakāinga (housing, education, social, hauora facilities). This directly links with the CTWF Māori housing and tāngata whenua spatial planning work programmes.

Manaakitanga – respect and care for others:

We build warm and affordable homes and communities for all socioeconomic backgrounds. We also are good ancestors who plan and make decisions for our mokopuna and future generations.

Kaitiakitanga – environmental responsibility and reciprocity:

We are dependent on the natural world for their well-being and survival and therefore have a responsibility to care for and protect the environment in return. We are good ancestors who leave the natural environment in a better state for our mokopuna and future generations. Environmental reciprocity involves moving away from an exploitative mindset and creating a more balanced relationship between human activity and nature to ensure the health and wellbeing of all.





What is meant by the principle “Ngā Wai ki Mauao me Maketu”?

The concept ‘Mountains to the Sea’ is well known however, we needed something specific for our area, hence , “Ngā Wai ki Mauao me Maketu”.

This principle is embedded with the Strategy; a commitment to environmental sustainability and responsibility. In other words, ensuring that population growth and social and economic development can be safely accommodated within natural resource limits.

This principle recognises:

- the interconnected nature of people and environment. Growth planning within the sub-region can have far-reaching impacts on both the well-being of communities and ecosystems.
- the connection within the environment from the maunga (mountains) to the moana (harbours and ocean), including ngāhere (forests), awa and manga (rivers and streams), repo (wetlands) and tāhuna (estuaries). This highlights the importance of integrated catchment planning and taking into account cumulative impacts on the natural environment.
- the cultural significance of the two landmarks to the many hapū and Iwi of the sub-region: Mauao as the visual and cultural icon to all who live in Tauranga Moana; and Maketu as the landing place of Te Arawa waka.

What is happening with the Tāngata Whenua Spatial Planning project?

We have been talking about the Tāngata Whenua Spatial Planning project for a number of years. Progress has slowed due to the limited capacity within the Tu Pakari team and the availability of contractors to support hapū and Māori Land Trust engagement.



How can I provide feedback to the draft Strategy?

Share your thoughts via an option that suits you best:

- **Online** - head to the [web page](#) to check out the draft strategy and/or fill out a feedback form.
- **Hard copy** – printed feedback forms are available at all council libraries and service centres.
- **Face to face kanohi ki te kanohi**

Date: 4-6 December 2023

Venue: Council chambers, Western Bay of Plenty District Council

Email haveyoursay@westernbay.govt.nz to register your interest.

Growing pains?
We've got a plan for that.
Check it out.

Affordable
homes on whenua
Māori close to marae

Balance
development with
limits of Te Taiao

Opportunities
for more papakāinga

Find out more
smartgrowthbop.org.nz/
smartgrowth-strategy-2023

"Kia Tū Pakari ai Tātou"

5. Next CTWF Meeting - 27 September

Our next CTWF hui will be on **Wednesday 27 September** at the WBOP District Council office and online.

The agenda is still being finalised; however, we are looking at the hosting a number of guest presenters:

- Hewletts Road Community
- Quayside Holdings Ltd
- Ministry of Housing and Urban Development
- BOPRC Freshwater policy team

We will also have an updates from our tāngata whenua representatives on the SmartGrowth Leadership Group, along with the SmartGrowth Strategy team.