

CUSHING

1,975 ft² Beds: 3+ Baths: 2.5



- Durable, comfortable and draft-free.
- Consumes **70% less energy**.
- Can be built in **4-6 months**.
- **Costs less** to construct and operate.
- Produces **less waste** in construction.
- **Built off-site** in a controlled environment.

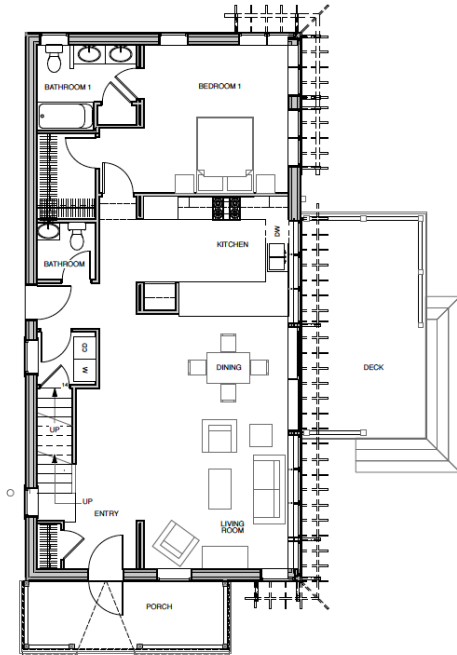
A MODERN TAKE ON MAINE VERNACULAR.

A cross between modern and traditional, the Cushing offers banks of glass, tall ceilings, and open living space on its first floor. The Cushing is a great home for families seeking extra living space near the kids' rooms, for games, study, music, and more. Featuring cutting-edge design and energy-efficient construction, the Cushing is capable of producing as much energy as it will consume in one year, achieving Net Zero Energy status.

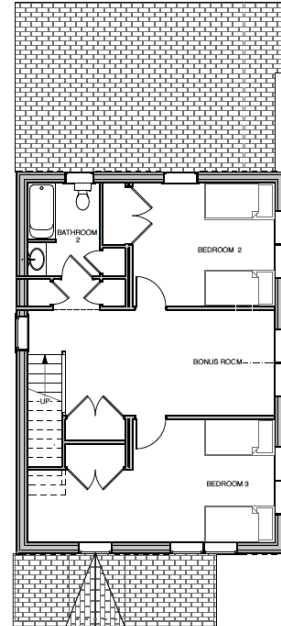


CUSHING

A BETTER WAY TO A BETTER HOME



first floor



second floor

CONSCIENTIOUS DESIGN

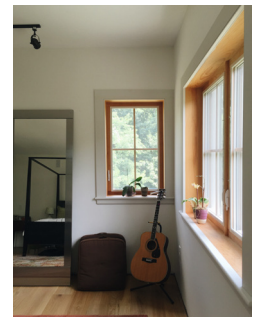
- Sun-shading overhangs for cooling in summer
- “Solar tuned” for more sun & warmth in winter
- Windows optimized for natural ventilation

ENERGY EFFICIENT FEATURES

- Super-insulated: R-60 roof, R-40 walls, R-20 basement
- Photovoltaic solar panels
- High-efficiency heat and air conditioning Triple-glazed windows
- Airtight construction
- Low-flow plumbing fixtures

HEALTHY INDOOR ENVIRONMENT

- Efficient ventilation / fresh air exchange
- Low VOC paints, adhesives and sealants
- Formaldehyde-free insulation



YOUR NEW HOME AWAITS.

BRIGHTBUILTHOME.COM | 207 747 4822

CUSHING