

JEWELL

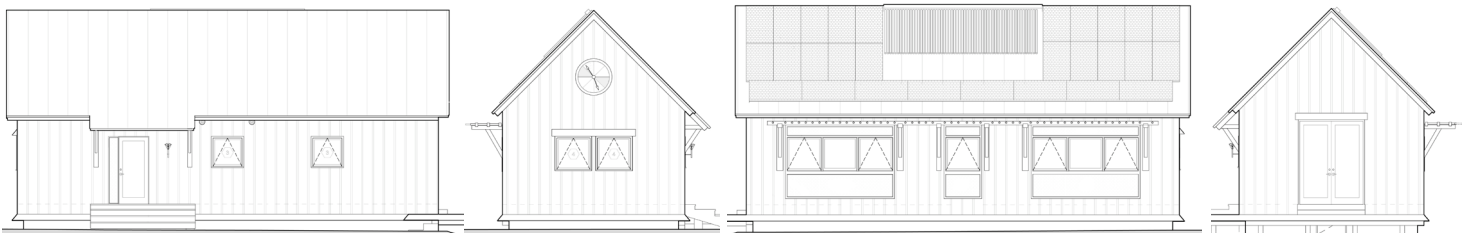
750-960 ft² Beds: 1-2 Baths: 1



- **Durable, comfortable** and **draft-free**.
- Consumes **70% less energy**.
- Can be built in **4-6 months**.
- **Costs less** to construct and operate.
- Produces **less waste** in construction.
- **Built off-site** in a controlled environment.

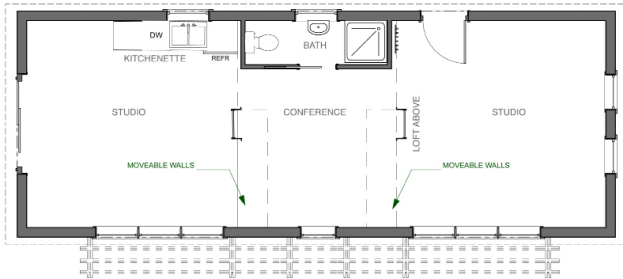
OUR FLAGSHIP DESIGN.

The granddaddy of BrightBuilt - the Jewell, formerly the BrightBuilt Barn, is a nod to both Maine's historically agrarian landscape and to the potential of modern innovation, in a tidy-little barn structure. With Studio, 1-Bedroom and 2-Bedroom options, this design also offers lots of options for work, leisure, or living, in a compact footprint. The Jewell is capable of producing as much energy as it will consume in one year, achieving Net Zero Energy status.

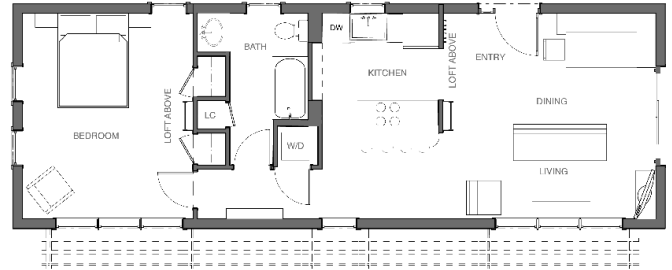


JEWELL

A BETTER WAY TO A BETTER HOME



studio
3/4 bath



1 bedroom
1 bath



2 bedroom
1 bath

CONSCIENTIOUS DESIGN

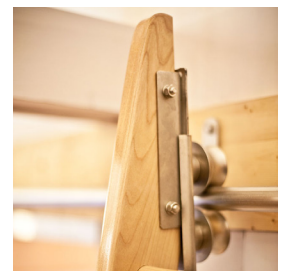
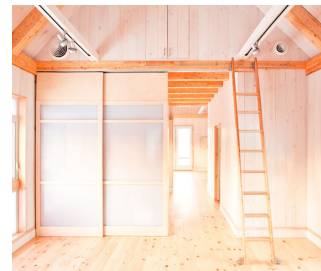
- Sun-shading overhangs for cooling in summer
- "Solar tuned" for more sun & warmth in winter
- Windows optimized for natural ventilation

ENERGY EFFICIENT FEATURES

- Super-insulated: R-60 roof, R-40 walls, R-20 basement
- Photovoltaic solar panels
- High-efficiency heat and air conditioning Triple-glazed windows
- Airtight construction
- Low-flow plumbing fixtures

HEALTHY INDOOR ENVIRONMENT

- Efficient ventilation / fresh air exchange
- Low VOC paints, adhesives and sealants
- Formaldehyde-free insulation



YOUR NEW HOME AWAITS.
BRIGHTBUILTHOME.COM | 207 747 4822

JEWELL