

JORDAN

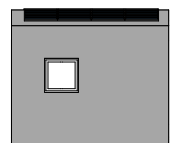
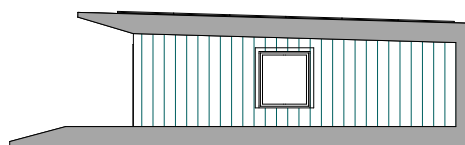
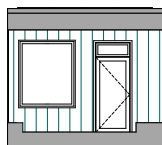
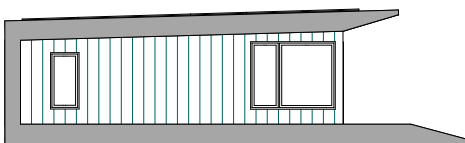
420 ft² Bed: Studio Bath: 1



- **Speedy** move-in
- **Durable, comfortable** and **draft-free**.
- **Low-maintenance** materials.
- **Built off-site** in a controlled environment.
- Added **space for another generation** or visiting guests.

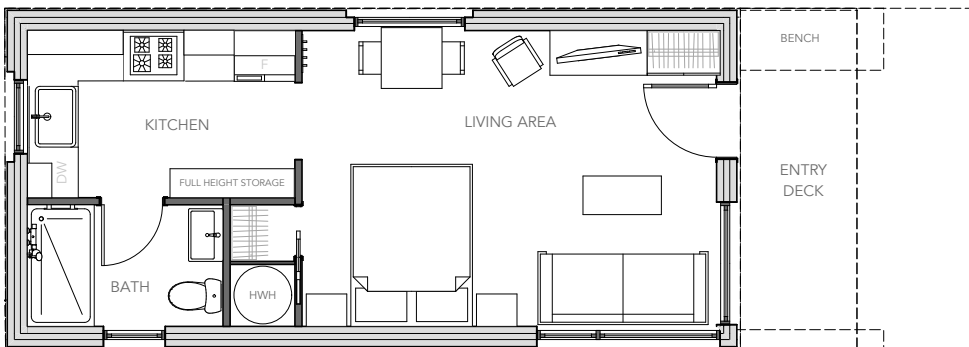
STUDIO LIVING FOR THE TINY HOME LOVER.

Designed to be quickly installed in tight fitting spaces in an urban setting or on the same property as an existing home, the Jordan is a smart investment for homeowners who desire efficient living space or have a need for additional space. With all of the modern amenities a tiny home lover might need – the Jordan comes with a full kitchen, dishwasher, and creative storage, and more. Featuring cutting-edge systems and energy-efficient construction, the Jordan is capable of producing as much energy as it will consume in one year, achieving Net Zero Energy status.



JORDAN

A BETTER WAY TO A BETTER HOME



FEATURES

- Large entry deck with bench
- Flexible furnishing options
- Full service kitchen
- Ample small-space storage options
- Barrier-free design optional
- Warm and comfy year round

CONSCIENTIOUS DESIGN

- Sun-shading overhangs for cooling in summer
- "Solar tuned" for more sun & warmth in winter
- Windows optimized for natural ventilation

ENERGY EFFICIENT FEATURES

- Super insulated: R-60 roof, R-40 walls and floor
- Photovoltaic solar panels option
- Triple-glazed windows
- Draft-free construction
- Energy star appliances

HEALTHY INDOOR ENVIRONMENT

- Filtered fresh air, 24 hours a day
- Low VOC paints, adhesives and sealants
- Formaldehyde-free insulation
- No fossil fuel combustion



YOUR NEW HOME AWAITS.
BRIGHTBUILTHOME.COM | 207 747 4822

JORDAN