

ABB Controller Compatibility



Contents

Chapter 1. Requirements.....	3
Chapter 2. Confirming Software Requirements.....	5

Chapter 1. Requirements

Supported Devices

Here are the compatible robots organized by required robot controllers.

IRC5 or IRC5C		
<ul style="list-style-type: none"> • IRB 120 • IRB 1200-5-0.9 • IRB 1200-7-0.7 • IRB 140 • IRB 140T • IRB 1410 • IRB 1600-10-1.2 • IRB 1600-10-1.45 • IRB 1600-6-1.2 • IRB 1600-6-1.45 • IRB 2400-10-1.55 • IRB 2400-16-1.55 • IRB 2600-12-1.65 • IRB 2600-12-1.85 • IRB 2600-20-1.65 • IRB 4400-60-1.96 • IRB 4400L-10-2.53 • IRB 4600-20-2.50 • IRB 4600-40-2.55 	<ul style="list-style-type: none"> • IRB 4600-45-2.05 • IRB 4600-60-2.05 • IRB 6620 • IRB 6640-185-2.80 • IRB 6640-235-2.55 • IRB 6650S-125-3.5 • IRB 6650S-125-3.5 LeanID • IRB 6650S-200-3.0 • IRB 6650S-200-3.0 LeanID • IRB 6650S-90-3.9 • IRB 6660-100-3.3 • IRB 6660-130-3.1 • IRB 6660-205-1.9 • IRB 6700-150-3.20 • IRB 6700-150-3.20 LeanID • IRB 6700-155-2.85 • IRB 6700-155-2.85 LeanID • IRB 6700-200-2.60 • IRB 6700-200-2.60 LeanID 	<ul style="list-style-type: none"> • IRB 6700-205-2.80 • IRB 6700-205-2.80 LeanID • IRB 6700-235-2.65 • IRB 6700-235-2.65 LeanID • IRB 6700-245-3.00 • IRB 6700-245-3.00 LeanID • IRB 6700-300-2.70 • IRB 6700-300-2.70 LeanID • IRB 6790-205-2.80 • IRB 6790-235-2.65 • IRB 7600-150-3.50 • IRB 7600-325-3.10 • IRB 7600-340-2.80 • IRB 7600-400-2.55 • IRB 7600-500-2.55 • IRB 8700-550-4.20 • IRB 8700-800-3.50

Safety Setup

ForgeOS 5.4.0 and later supports the PROGRAM Mode configuration. In PROGRAM Mode, you do not connect the READY pendant enabling switch or key switch to the robot. Speeds are limited by ForgeOS instead of by safety-rated hardware.

Software Requirements

Requirement	Part Number	Description
ForgeOS	5.4.0 or later	Minimum ForgeOS version that supports ABB robots.
RobotWare	6.08.01	Minimum software version supported by Forge/OS.

Requirement	Part Number	Description
RobotStudio, Basic License	2019.5.2 or later	Required on a PC to configure the ABB controller.
PC Interface	616-1	Required to run Forge software on the ABB controller.
Multitasking	623-1	Required to run Forge programs in parallel on the ABB controller.

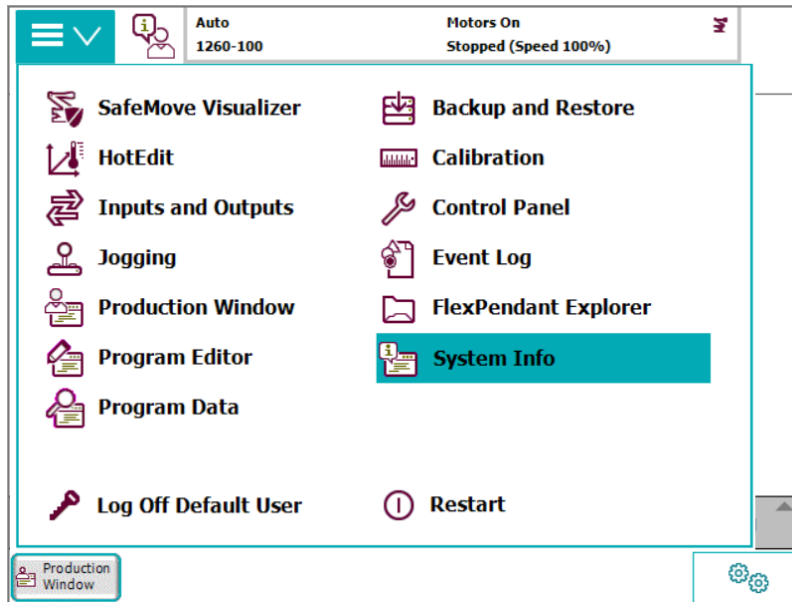
Hardware Requirements

Requirement	Part Number	Description
24V/2.5A Power Supply	e.g., Siemens 6EP1332-5BA00 or similar	Powers the READY pendant and safety control modules. Min./Max. current: 2.5/5.0 Amps.
Cat5e Shielded Ethernet Cable	-	Connects the robot controller to a IPC.
USB flash drive, 8GB or larger	-	Required to transfer robot files from Forge/OS to the robot.

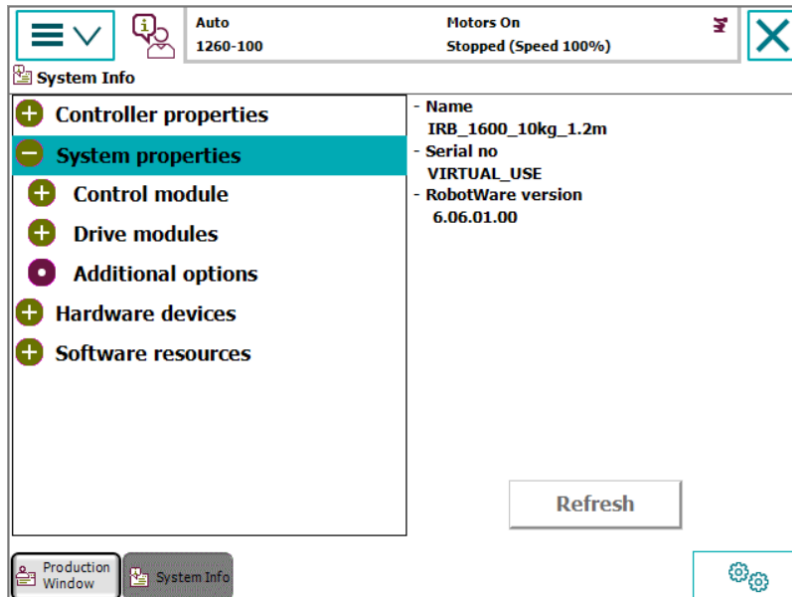
Chapter 2. Confirming Software Requirements

Follow these steps to check the software version and ABB options on an IRC5 or IRC5C robot controller.

1. Plug the ABB controller into a power source. Follow ABB instructions for powering the ABB controller.
2. Turn the power switch on the ABB controller clockwise to power the controller on. Wait for the controller to boot up.
3. On the ABB teach pendant, follow these steps to find the RobotWare version:
 - a. Tap the menu button, then tap **System Info**.



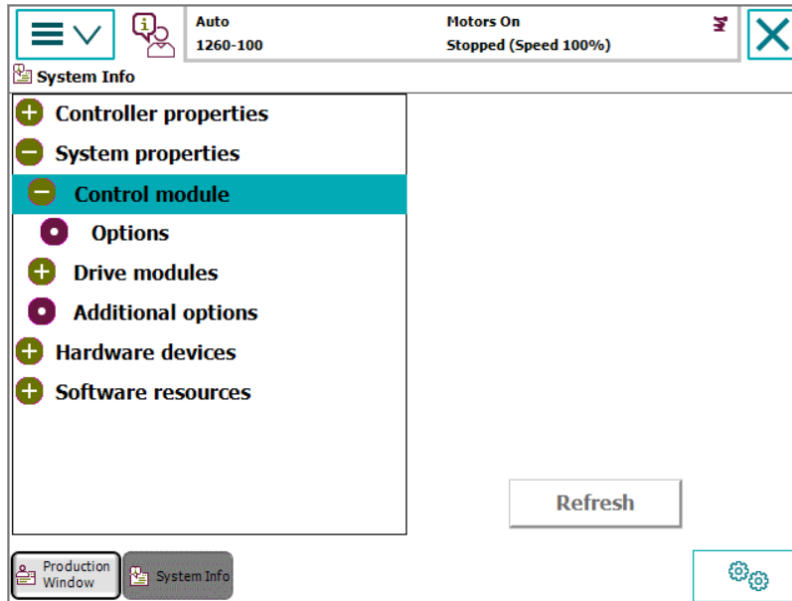
- b. In the System Info menu, tap **System properties**. Look for the **RobotWare version** on the right.



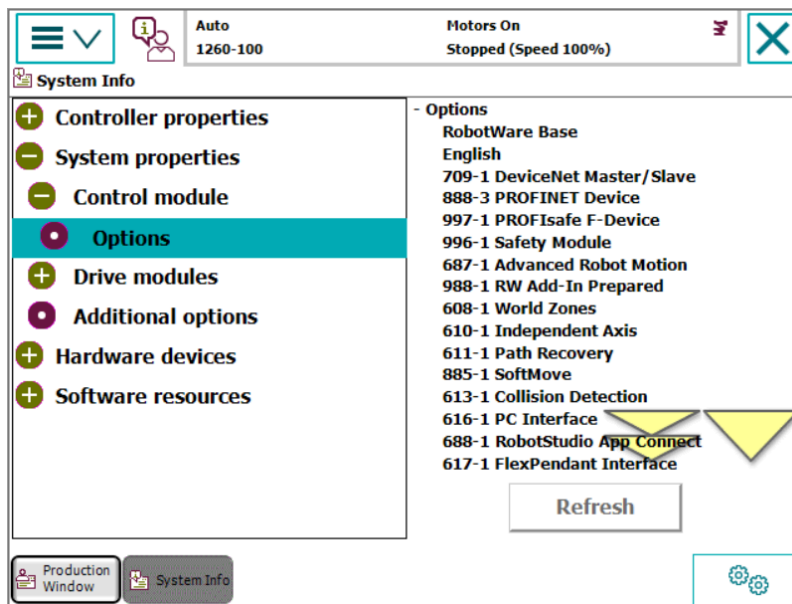
- c. If you see a version number below the minimum supported version, **contact ABB Robotics to upgrade**.

4. On the ABB teach pendant, follow these steps to view installed ABB options:

a. In the System Info menu, under **System properties**, tap **Control module**.



b. Tap **Options**, then view the list of installed options on the right. Check for each of the required options.



c. If you are missing any of the required ABB options, **contact ABB Robotics to upgrade**.