

EPSON Compatibility Guide



Contents

Chapter 1.	3
Chapter 2. Checking the Firmware Version.....	5

Chapter 1.

Supported Devices

Here are the compatible robots organized by required robot controllers.

VT6L	RC700/A
<ul style="list-style-type: none">• VT6L	<ul style="list-style-type: none">• C3• C4• C4L• C8• C8L• C8XL• C12XL• N2• N6-A850• N6-A1000

Software Requirements

Requirement	Description	VT6L	RC700/A
Controller Firmware	Minimum software version supported by Forge/OS.	v7.5.53.0	v7.5.3.0
RC+ 7.0 (Full Version)	Required software on Windows PC for robot setup.	v7.5.2 or later	v7.5.2 or later

Hardware Requirements

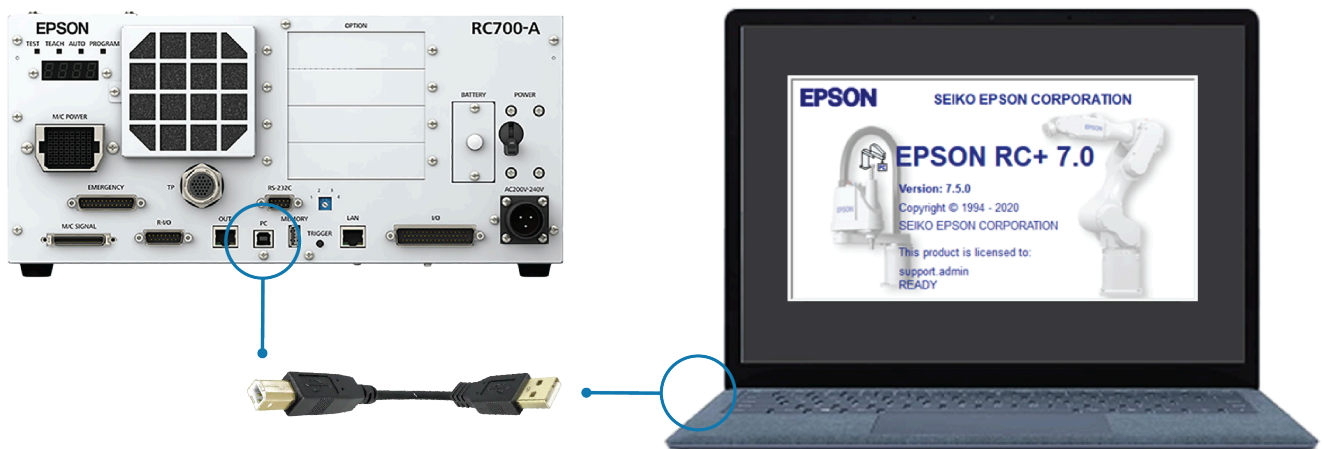
Requirement	Part Number	Description	Supplier
Emergency Terminal Block Kit (with Cable)	RE000975-1	Required to connect the READY pendant safety features to the robot.	EPSON

Requirement	Part Number	Description	Supplier
USB A-Male to B-Male Cable		Connects a Windows PC to the robot controller for setup in RC+.	EPSON
24V/2.5A Power Supply	e.g., Siemens 6EP1332-5BA00 or similar	Powers the READY pendant and safety devices. Min./Max. current: 2.5/5.0 Amps.	
Cat5e Shielded Ethernet Cable		Connects the robot controller to a IPC.	
USB flash drive, 8GB or larger	R-400030	Required to transfer robot files from Forge/OS to the robot.	READY Robotics

Chapter 2. Checking the Firmware Version

Follow these steps to check what firmware version your EPSON controller is on.

1. Plug the robot controller's power cable into a power outlet. Follow EPSON documentation for powering it on.
2. Plug the USB Cable into the robot controller's **PC** port. Plug the other end into a Windows PC with EPSON RC+ installed.

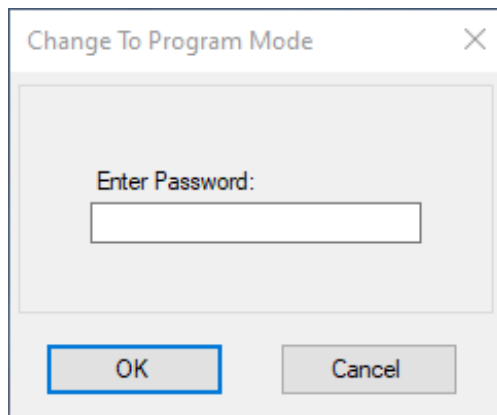


3. Open EPSON RC+ in Program Mode.

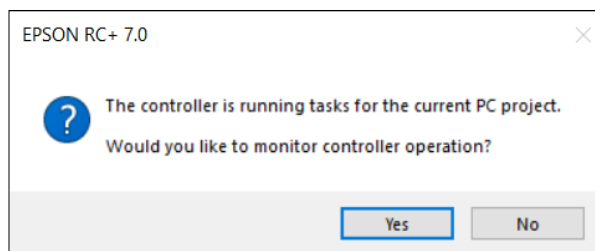
- If you see the pop-up below, click **Change To Program Mode** before the 5 second countdown expires.
- If the default boot mode is set to Program Mode, wait for the 5 second countdown to expire.



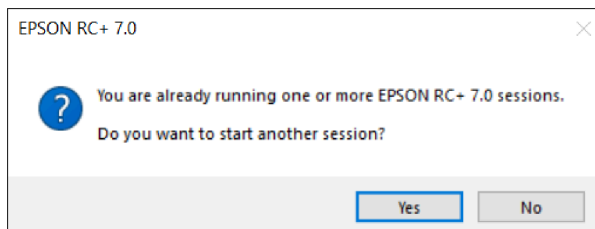
4. If you set a password, enter it. Then click **OK**.



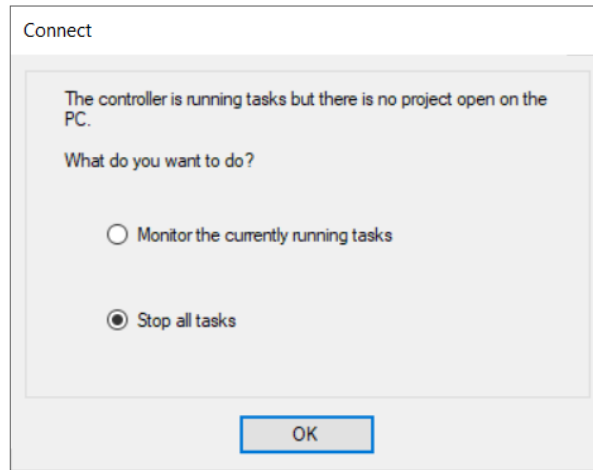
5. If you see a pop-up about monitoring controller operation before Program Mode boots, click **Yes**. If you see it after Program Mode boots, click **No**.



6. If you see a pop-up about starting another session, click **Yes**.



7. If you see a pop-up about current tasks running, select **Stop all tasks**.



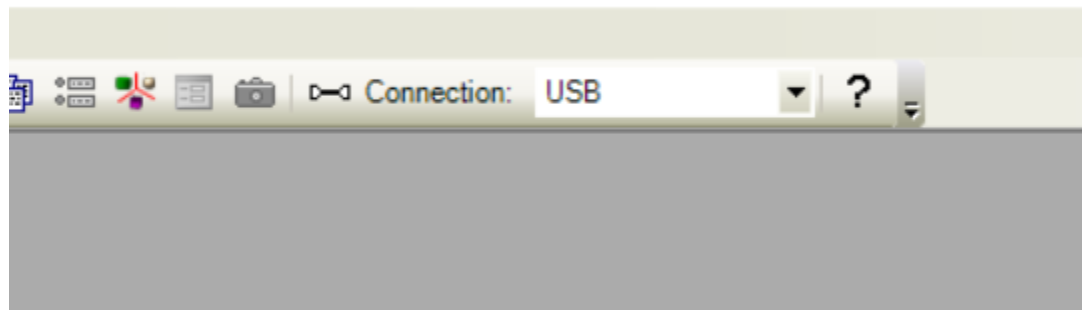
8. In the top menu, select a **Connection** type of **USB**.



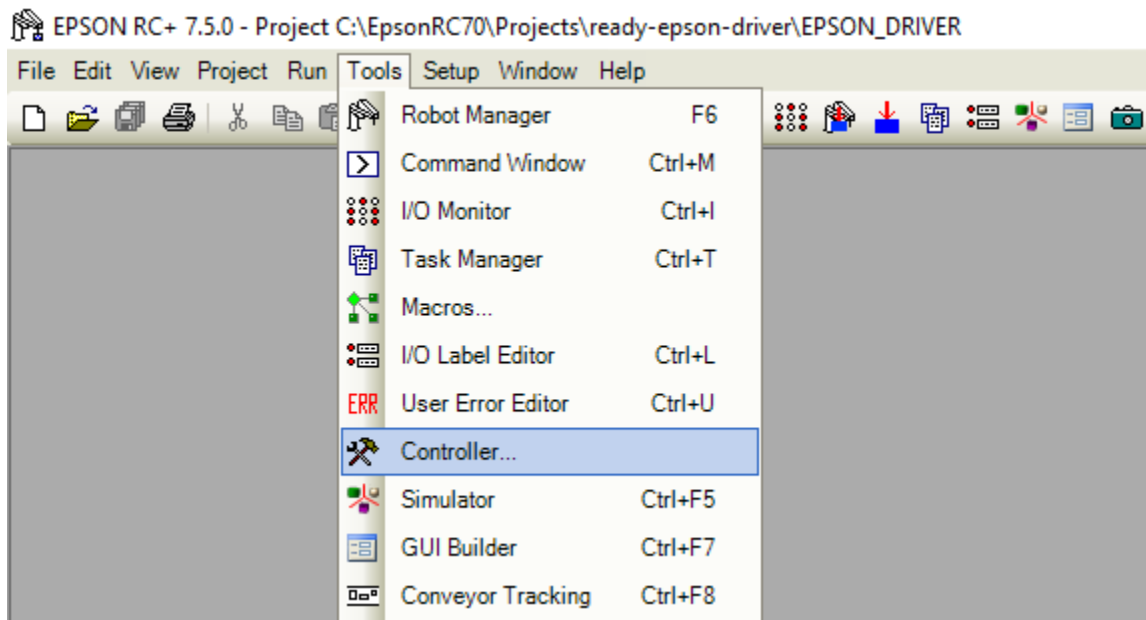
Tip:

The USB option is only available when:

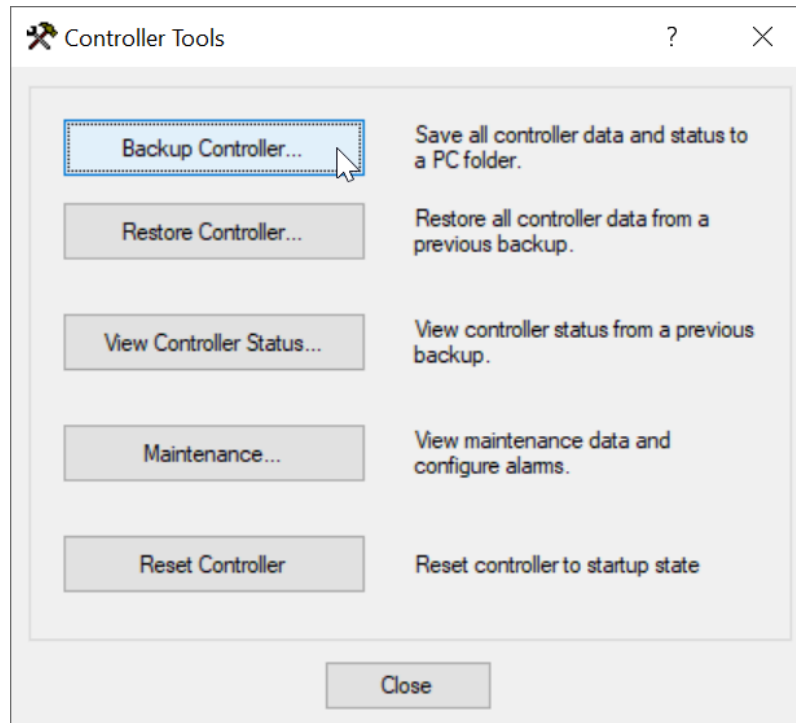
- You are using the full version of RC+.
- Your USB cable is connected to the robot controller and Windows PC.



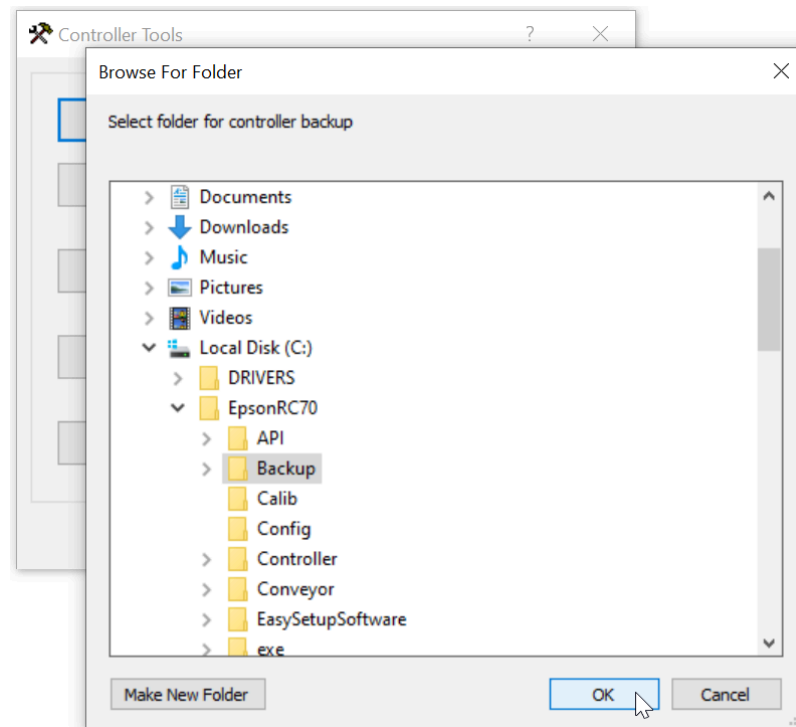
9. Go to **Tools**. Select **Controller** in the dropdown.



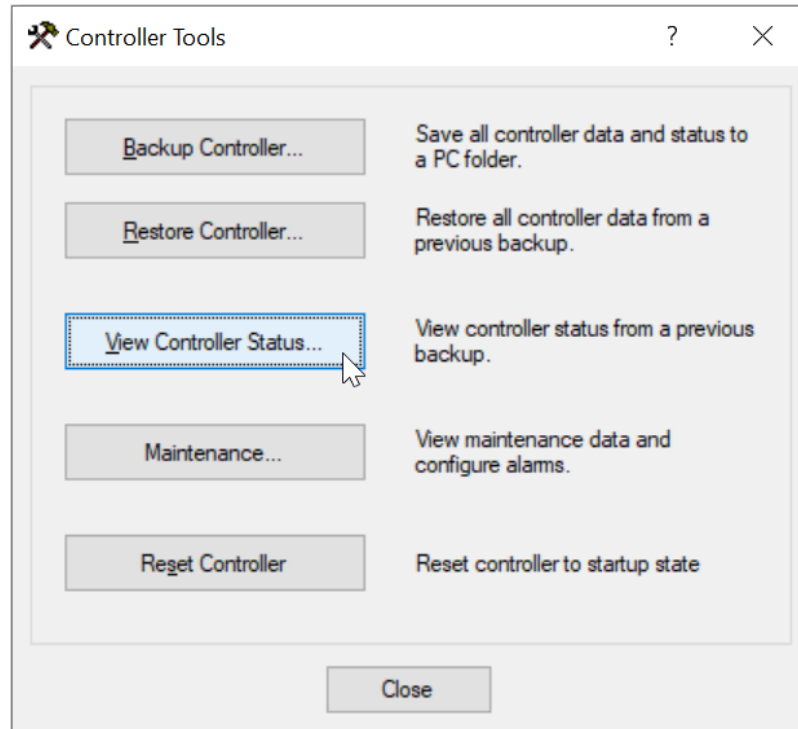
10. Click **Backup Controller**.



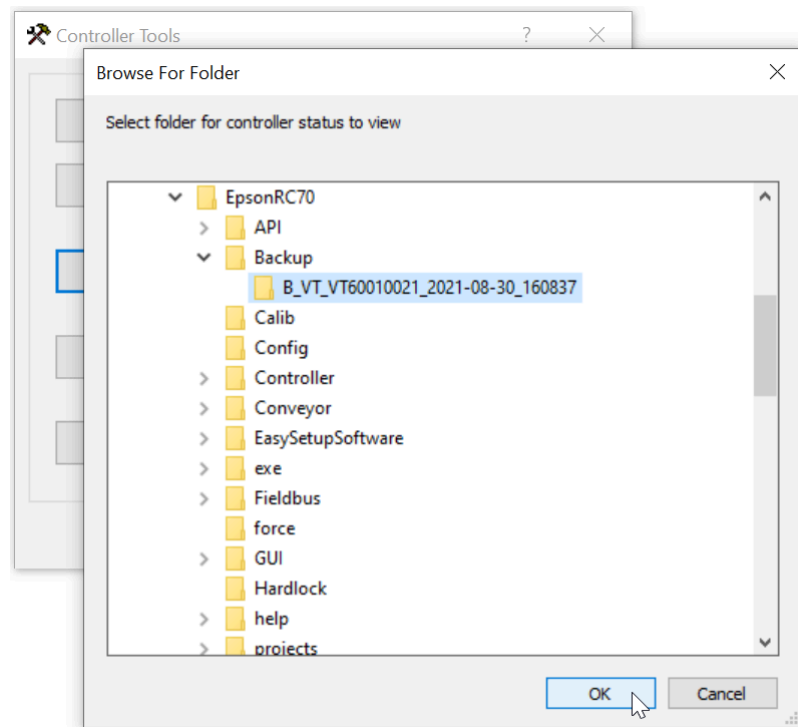
11. Select the location where you would like to store your backup. Click **OK**.



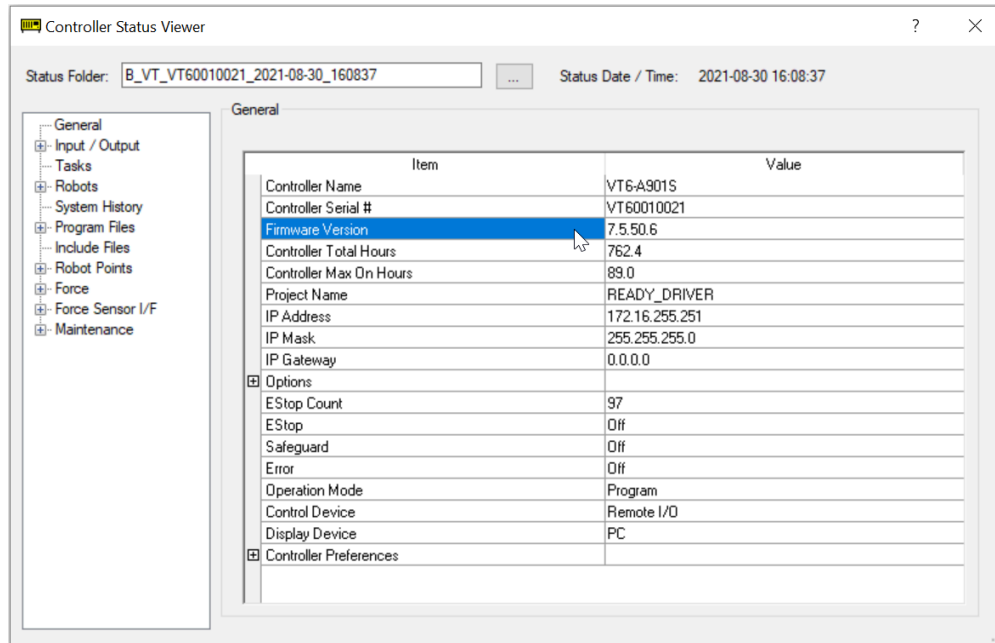
12. Click **View Controller Status**.



13. Select the backup file that you just created. Click **OK**.



14. Find the **Firmware Version**.



15. Verify that your firmware version matches the requirement. **If you need to upgrade, contact EPSON Support.**