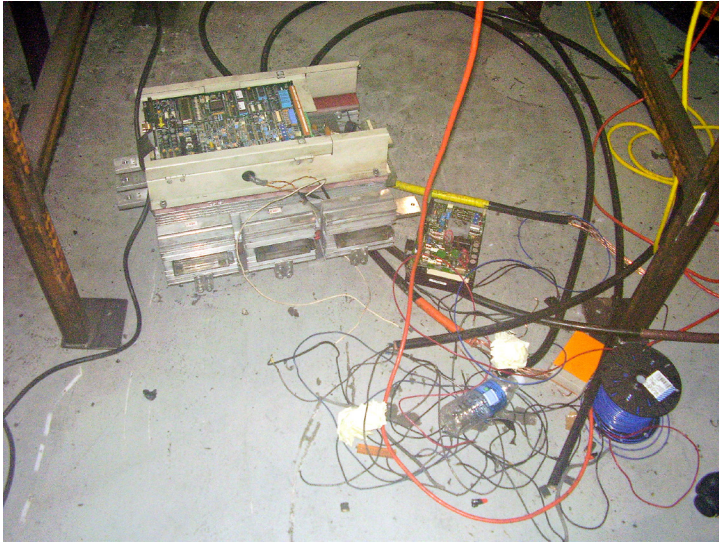


#BEFORE AND AFTER: PLASTICS EXTRUDER BREAKDOWN



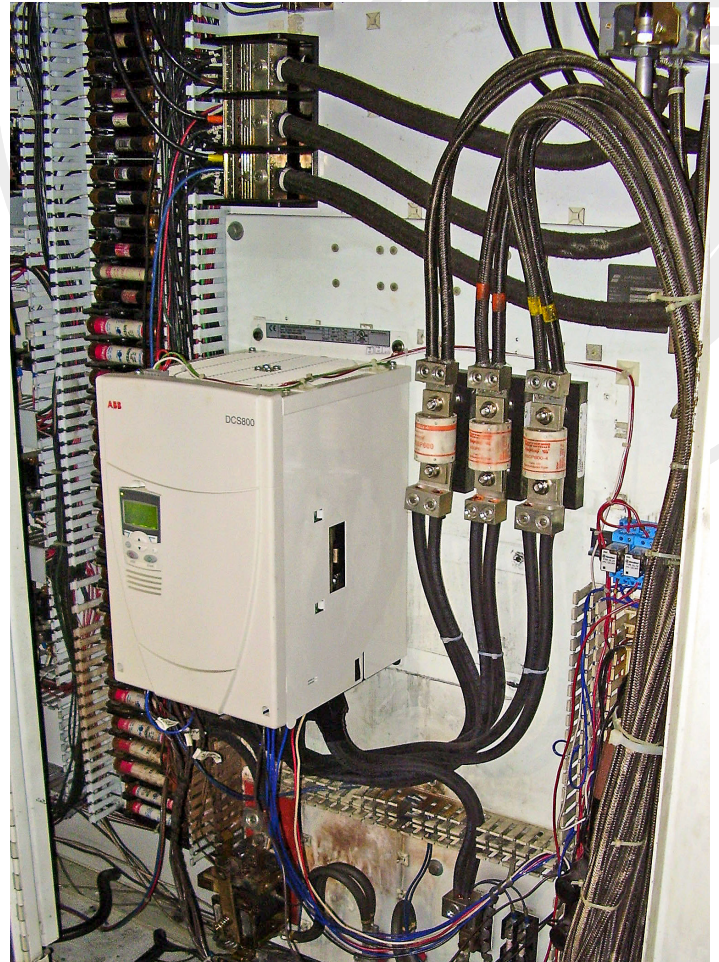
Before

Original Design:

- Obsolete Vintage Safronics DC Drive
- The customer was so upset at the breakdown, they gutted the entire panel and threw on the old DC drive onto the floor
- The customer had a partial schematic from another similar machine
- The OEM design used a cheap single-pole DC side armature contactor
- Production was down with critical production needs



**APPLICATIONS
ENGINEERING GROUP**



After

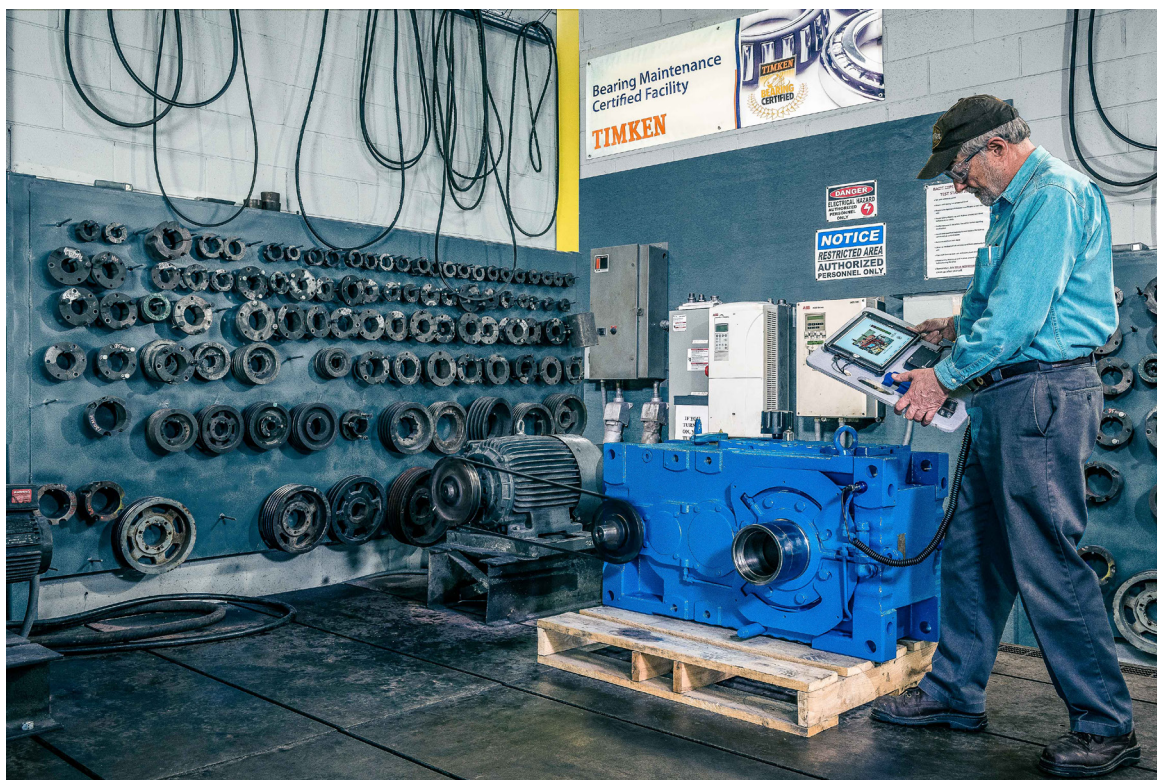
New Design:

- ABB DCS800 DC Drive
- B&D's engineers arrived at the same time as the courier with the drive
- The engineers made the schematic as they installed the new drive
- Provided copies of the parameters including local back-up and back-up on B&D's server
- Customer training
- Local service and support
- Total job - 16 hours



SERVING INDUSTRY SINCE 1947

SERVICE•SOLUTIONS•EXPERTISE



SERVING INDUSTRY SINCE 1947

SERVING INDUSTRY SINCE 1947