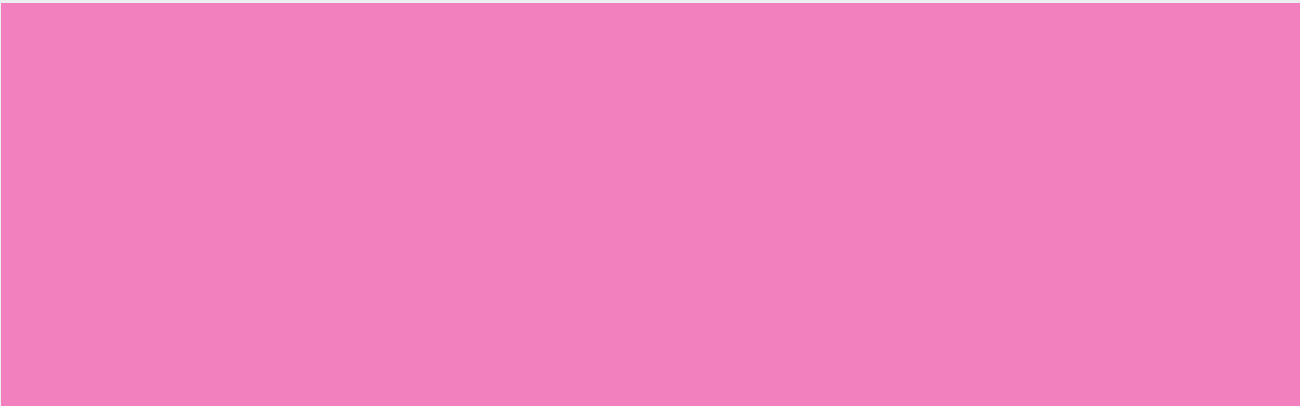




GV190CY



T1009CY



T1013CY



T3011CY

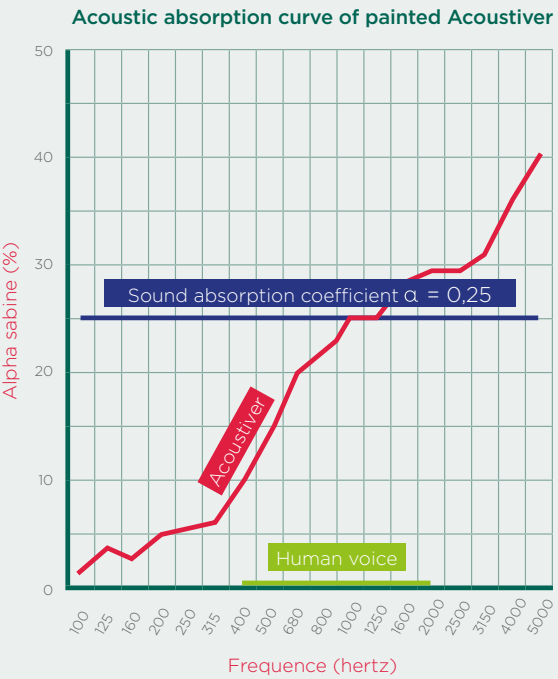
Acoustiver Paintable
Acoustical Wallcovering

The solution for sound control.
A glass fiber wallcovering laminated with a fleece that is specifically designed for improving acoustical comfort.

- Reduces echoes and absorbs up to 40% of noise pollution
- Has white top coat and is ready to paint

Used in commercial projects to help absorb and reduce background noise. Typical projects are conference rooms, meeting rooms, open office plans, hotel ball rooms, restaurants and many other projects. Also used in residential projects for home theaters, home offices, basements, and many other areas and especially where there are hard surfaces to reduce echo effect.

When it is time to redecorate, simply repaint. That’s it.



| TECHNICAL DATA | Finish | Pattern | Weight oz/yard ² | Roll size length x width | TOTAL coverage feet ² /roll |
|-------------------|----------------------------|---------|--------------------------------|-----------------------------|-------------------------------------------|
| | PRE-PAINTED GLASS FIBER | GV190CY | 14,75 | 21.87 yards x 39.37 inches | 215,30 |
| | | T1009CY | 13,86 | | |
| | | T1013CY | 15,04 | | |
| | | T3011CY | 15,63 | | |



Novelio® Acoustiver

Paintable Acoustical Wallcoverings



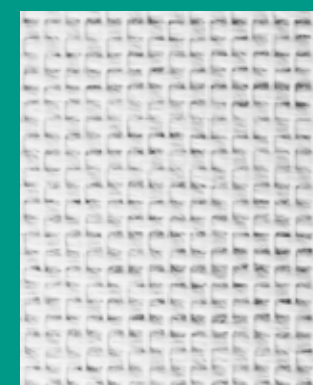
ACOUSTIC
ABSORPTION



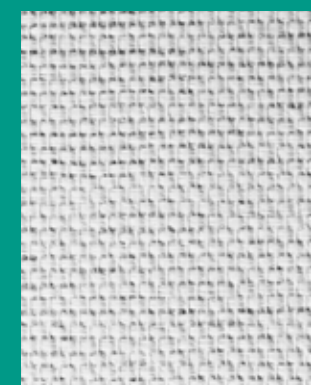
FIRE RESISTANT



GV190CY



T1009CY



T1013CY

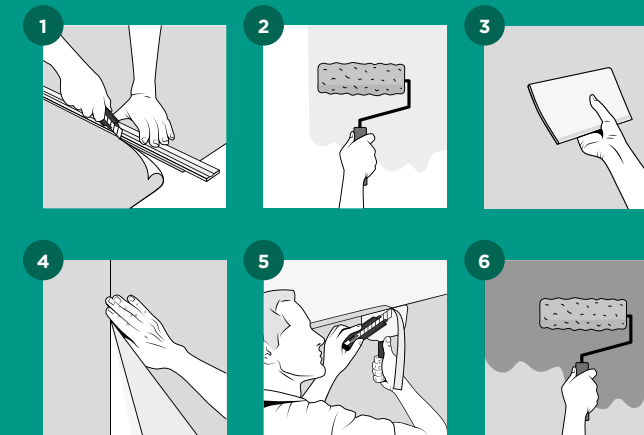


T3011CY

Instructions

The wall must be clean (no dust, dirt or grease), dry, even and primed.
Temperature should not be below 46.4 °F.

1. Check preparation of the surface (cracks must be filled in, uneven parts must be sanded).
Cut to length according to room height (+ 4 in).
2. Apply the adhesive evenly on the wall using ¾" nap roller (-5.9oz/yard²). Heavy Duty Clear or clay premixed wallcovering adhesive is recommended.
3. Place the wallcovering panel on the wall vertically and smooth it with a plastic spatula.
4. Place the adjacent panel edge to edge (respect vertical pattern repeat).
Repeat steps 1, 2, and 3 with other panels until you have finished the room.
5. Cut off any surplus with a knife.
6. Apply a 1st coat of acrylic latex paint.
When dry, apply 2nd coat of acrylic latex paint.



The glass fiber fabric is carefully checked before leaving our factory but should also be checked again just before hanging. Any claim should be accompanied with roll label and a sample featuring the defect.

Certification

A+ – top class rating for VOC emissions according to the requirements of French legislation

CE mark – based on the EN15102 European norm

Oeko-Tex Standard 100 – contains no harmful substances certification

Euroclass B-s1-d0 – fire resistance certification

ASTM E84 – ASTM E84 Class A Fire Rating available on request

ASTM E84

CLASS A
(available on request)



Euroclass B-s1-d0



SAINT-GOBAIN ADFORS CZ s.r.o.

Sokolovská 106
570 21 Litomyšl • Czech Republic
Tel. : +420 461 651 111, +420 461 651 231
Fax : +420 461 651 231
glasgrid.eu@saint-gobain.com
www.adfors.com

USA Distributor and technical Information:

Roos International Ltd. Inc.
1020 N.W. 6th St. Ste H
Deerfield Beach
FL 33442
USA

Toll Free: 800-888-2776
Phone: 954-429-3883
Fax: 954-429-8208
E-mail: dich@roosintl.com

www.novelioclassicusa.com