



**Coolpo  
Tools  
Instruction**

# Table of Contents

|   |          |
|---|----------|
| <b>1. Summary.....</b>                        | <b>1</b> |
| <b>2. System Requirement and Install.....</b> | <b>1</b> |
| 2.1 Windows.....                              | 1        |
| 2.2 Mac.....                                  | 1        |
| 2.3 Install .....                             | 1        |
| <b>3. Upgrade.....</b>                        | <b>2</b> |
| 3.1 Get Started.....                          | 2        |
| 3.2 Upgrade .....                             | 2        |
| <b>4. Features.....</b>                       | <b>3</b> |
| 4.1 Layout.....                               | 3        |
| 4.2 Camera.....                               | 4        |
| 4.3 Whiteboard.....                           | 5        |
| 4.4 Block.....                                | 5        |
| 4.5 Language.....                             | 6        |
| 4.6 Save and Quit.....                        | 6        |

## 1. Summary

With Coolpo Tools, you will be able to: Customize Interface Layout, change camera settings, determine whiteboard and block the areas you don't wish to be seen. It's compatible with Coolpo PANA 2.0.0 and up.

## 2. System Requirement and Install

### 2.1 Windows:

win8 or Above

### 2.2 Mac :

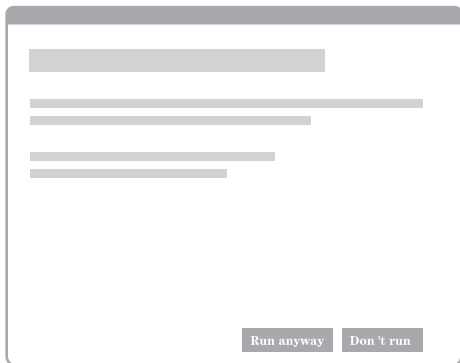
10.15.6 or above

System:

i3 CPU, Ram 1GB

### 2.3 Download and install

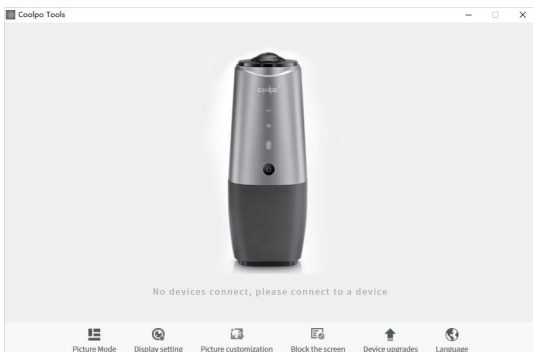
Go to <https://www.coolpolens.com/en/support.html>, click and download Coolpo tool. Find and click on the software to start install. (You may see a pop-up window like below, click 'more info', and then click on 'Run anyway')



### 3. Upgrade

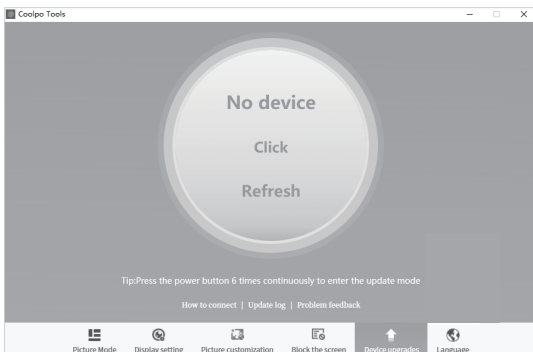
#### 2.1 Get Started

Connect power cable, make sure USB cable is connected with computer, press power button. Double click Coolpo Tools, you will see interface below:

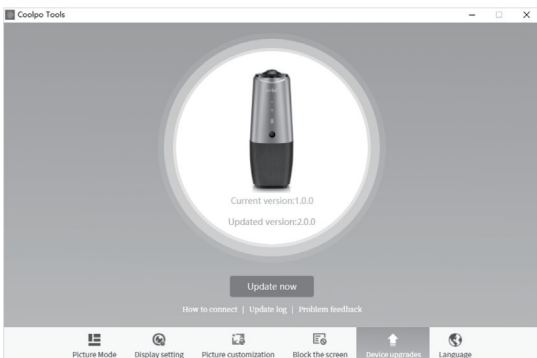


#### 2.2 Upgrade

If your device version is 1.0.0, you will need to turn off your device, click on the power button 6 times rapidly, and upgrade.



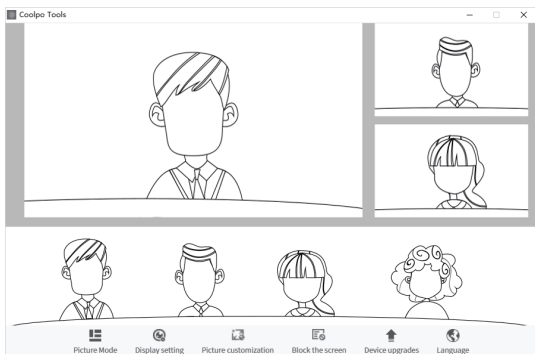
If your device version is 2.0.0. under Software Upgrade, click on 'Upgrade Now'. After the upgrade, device will reboot automatically.

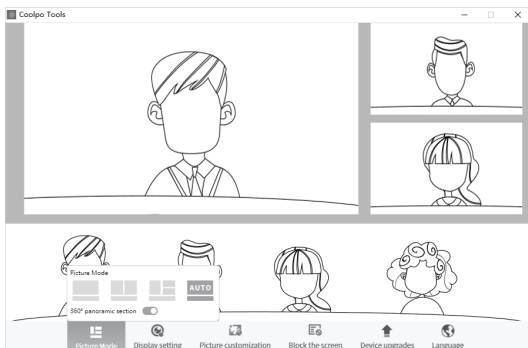


## 4. Feature

### 4.1 Picture Mode

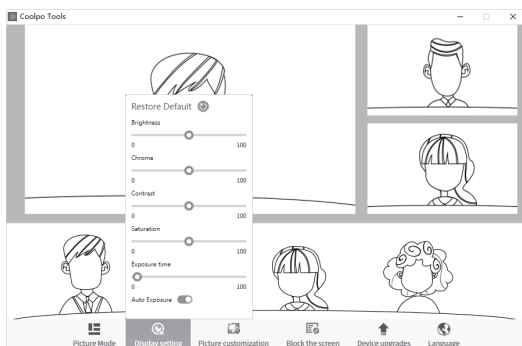
The default mode is on 'AUTO', you can choose three different mode as shown below. Panorama mode is not supported under 4k quality.





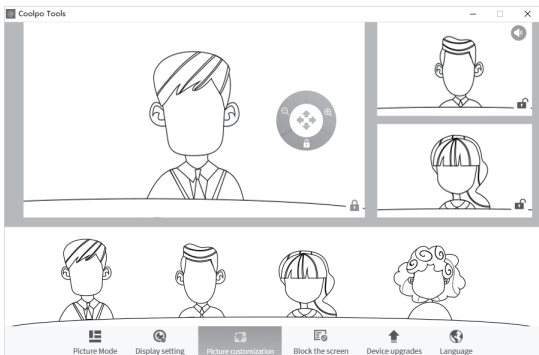
## 4.2 Display Setting

It allows you to adjust camera's settings: Brightness, Color Balance, Contrast and Saturation. If you want to adjust exposure time, turn off Auto Exposure first.



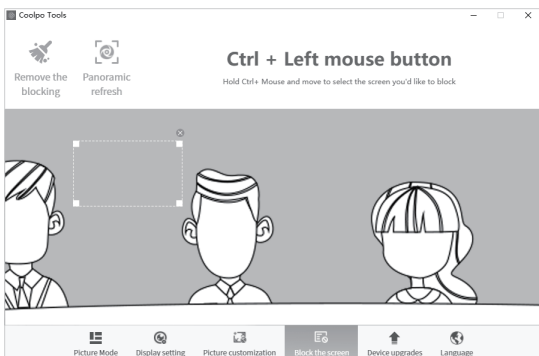
### 4.3 Picture customization

Choose any frame and click the lock on the bottom right corner to lock on current area. In this frame, drag the wheel to move camera around to find your preferred display area. or you can zoom in and out. Click the lock again to unlock. Once you change the picture mode, it will automatically unlock.\* You cannot use Picture customization under AUTO picture mode.



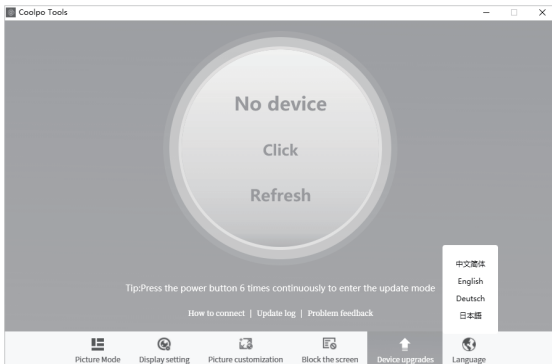
### 4.4 Block Screen

Ctrl+Left clicke, and drag the area you don't wish to show on screen. We suggest make a bigger area around the object/person you want to block. Click 'x' on upper right corner to unblock the area.



## 4.5 Language

Coolpo Tool support Chinese(Simplified), English, German and Japanese.



## 4.6 Save and Quit

If you want to return to default setting, click on 'Default Setting' and quit, click 'Save' and quit.

