



LACMTA FREE STANDING MAP CASE

Location Name

Bus and Rail System



THE LACMTA MAP CASE

is featured at many LA Metro stations. Available in both single and double sided versions, the Map Case clearly displays the maps and schedules for the entire LA Metro system. The Map Case is equipped with LED illumination and signage indicating the specific station name. The LACMTA Map Cases are fabricated in Hawthorne, CA and are BUY AMERICA compliant.



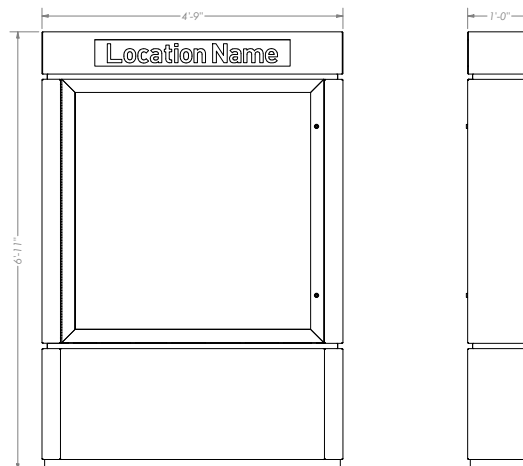
FEATURES AND SPECIFICATIONS

SPECIFICATIONS

- Double / Single Sided Map Case
- Stainless Steel Frame & Cladding
- Tempered Glass

FINISH

- Brushed Stainless Steel (#4 Vertical Grain)
- Cladding Reveals Powder Coat (3-5 mil) Glossy Black





THREE SIDED AD PANEL

Location Name

Bus and Rail System



THE THREE SIDED ADD PANEL

is ideal for all your advertising needs. The Medium "V" configuration offers a 360 Degree view. Best used in open environments, allowing for visibility of all three ads. The all metal construction is done in-house and is BUY AMERICA compliant.



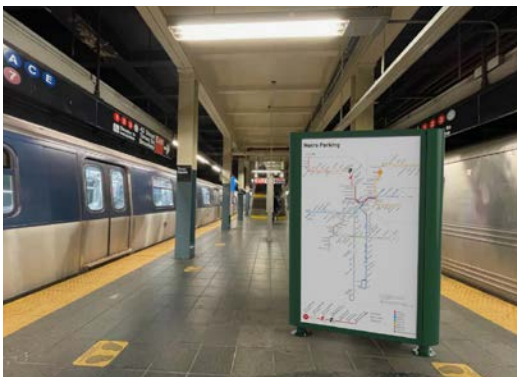
"WIDE V" CONFIGURATION



"NARROW V" CONFIGURATION



FLAT CONFIGURATION



FEATURES AND SPECIFICATIONS

SPECIFICATIONS

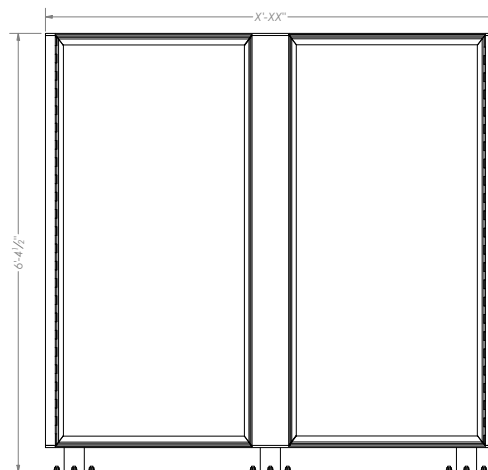
- 1/8" Aluminum Sheet
- 3 1/2" Schedule 40 Aluminum pipe
- 1/4" Tempered Glass
- LED Illumination
- 110 Volt or Solar Options
- Standard Ad Size – 4' x 6'

MOUNTING

- Surface mounted with 4x, 1/2" x 4-1/2" anchor bolts (by others)

FINISH

- Powder Coat (3-5mil)

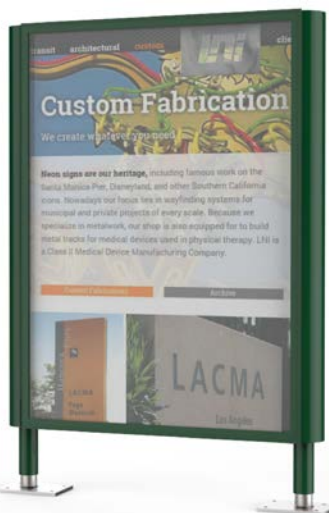




TWO SIDED AD PANEL

Location Name

Bus and Rail System

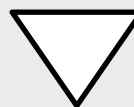


THE TWO SIDED ADD PANEL

is ideal for all your advertising needs. The Flat configuration allows for two advertisements and fits tightly against a surface or stands alone. The all metal construction is done in-house and is BUY AMERICA compliant.



"WIDE V" CONFIGURATION



"MEDIUM V" CONFIGURATION



"NARROW V" CONFIGURATION



FEATURES AND SPECIFICATIONS

SPECIFICATIONS

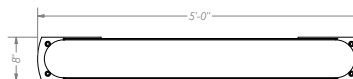
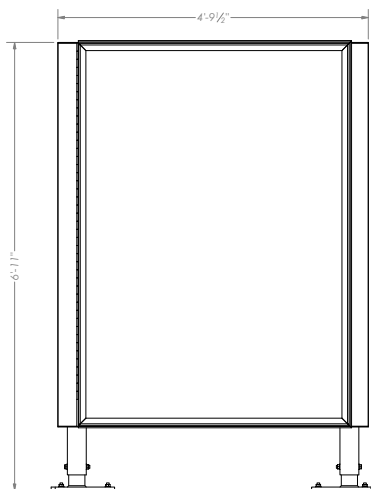
- 1/8" Aluminum Sheet
- 3 1/2" Schedule 40 Aluminum pipe
- 1/4" Tempered Glass
- LED Illumination
- 110 Volt or Solar Options
- Standard Ad Size – 4' x 6'

MOUNTING

- Surface mounted with 4x, 1/2" x 4-1/2" anchor bolts (by others)

FINISH

- Powder Coat (3-5mil)





SINGLE SIDED MAP CASE

Location Name

Bus and Rail System



THE SINGLE SIDED MAP CASE

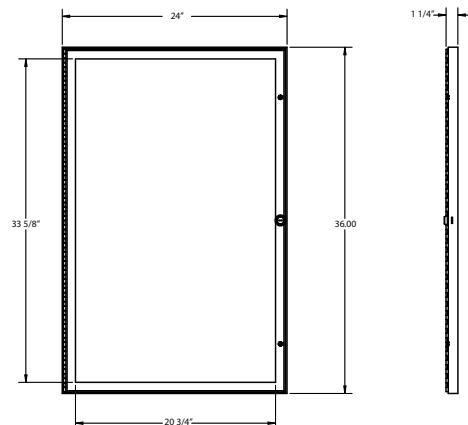
is ideal for any transit shelter. The 24" x 36" map case is sized to accommodate standard maps and advertisements. Constructed of aluminum and tempered glass, the LNI Map Case is built with durability in mind.



FEATURES AND SPECIFICATIONS

SPECIFICATIONS

- 24" x 36" x 1.25" or 24" x 24" x 1.25"
- 1" x 1" Aluminum Angle
- Tempered Glass
- Tamper Proof Fasteners
- Continuous Stainless Steel Hinge
- Keyed Cam Lock

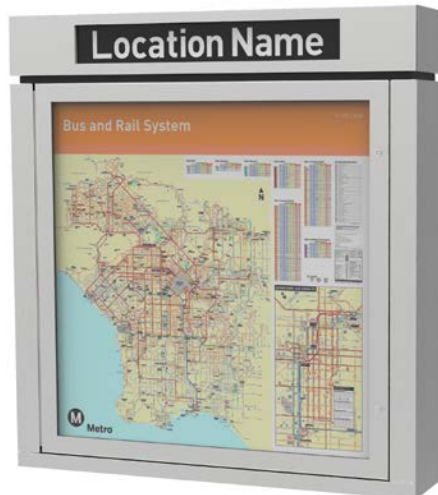




WALL MOUNTED MAP CASE

Location Name

Bus and Rail System



THE WALL MOUNTED MAP CASE

is featured at many LA Metro stations. The Map Case clearly displays the maps and schedules for the entire LA Metro system. The Map Case is equipped with LED illumination and signage indicating the specific station name. The LACMTA Wall Mounted Map Cases are fabricated in Hawthorne, CA and are BUY AMERICA compliant.



FEATURES AND SPECIFICATIONS

SPECIFICATIONS

- Single Sided Map Case
- All Steel Construction
- Tempered Glass

FINISH

- Brushed Stainless Steel (#4 Vertical Grain)
- Powder Coat (3-5 mil) RAL # 9011

MOUNTING

- Wall Mounted

