



TRASH RECEPTACLES

ANNEX SERIES



AURORA SERIES



CITY SERIES



COAST SERIES



CONTOUR SERIES



DUAL ESTATE SERIES



DUAL URBAN SERIES



ECLIPSE SERIES



ESTATE SERIES



METROPOLITAN SERIES



MIRAGE SERIES



PALM SERIES



PLAZA SERIES



SUNSET SERIES



URBAN SERIES



VENTURE SERIES



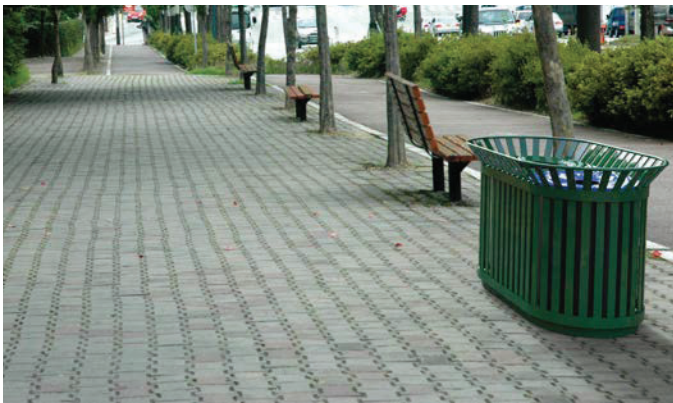


DUAL ESTATE TRASH RECEPTACLE



THE DUAL ESTATE TRASH RECEPTACLE

is perfect for municipalities, office complexes, universities and apartment buildings. Equipped with both trash and recycling compartments, the receptacle keeps the trash and recycling separated for proper disposal. The all metal construction is fully fabricated in California and is BUYAMERICA compliant.



FEATURES AND SPECIFICATIONS

SPECIFICATIONS

- 32 Gallon x2 Capacity
- Side Opening Door w/ Push/Pull lever & Key Cam Lock (optional)
- 1/4" x 1.5" Steel Flat Bar
- 3/16" x 2" Flat Steel Bar

FINISH

- Powder Coat (3-5 mil) *Specify RAL #*

MOUNTING

- Surface Mounted

