



TRASH RECEPTACLES

ANNEX SERIES



AURORA SERIES



CITY SERIES



COAST SERIES



CONTOUR SERIES



DUAL ESTATE SERIES



DUAL URBAN SERIES



ECLIPSE SERIES



ESTATE SERIES



METROPOLITAN SERIES



MIRAGE SERIES



PALM SERIES



PLAZA SERIES



SUNSET SERIES



URBAN SERIES

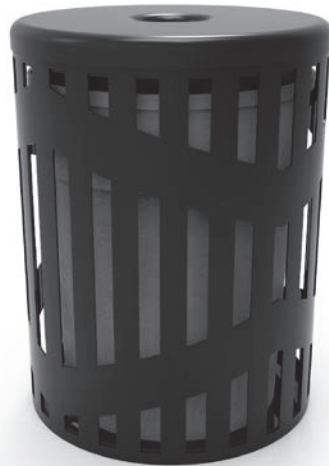


VENTURE SERIES





CONTOUR TRASH RECEPTACLE



THE CONTOUR TRASH RECEPTACLE

is perfect for municipalities, office complexes, universities and apartment buildings. The all metal construction is fully fabricated in California and is BUYAMERICA compliant.



FEATURES AND SPECIFICATIONS

FEATURES

- 32 Gallon Capacity
- 18 Gauge Laser Cut Body
- 1/8" Steel Structure
- 3/16" Steel Base
- Standard round lid (pictured)

FINISH

- Powder Coat (3-5mil) *Specify RAL #*

MOUNTING

- Surface Mounted



HINGED LID OPTION



DOMED LID OPTION



RAIN COVER OPTION

