



TRASH RECEPTACLES

ANNEX SERIES



AURORA SERIES



CITY SERIES



COAST SERIES



CONTOUR SERIES



DUAL ESTATE SERIES



DUAL URBAN SERIES



ECLIPSE SERIES



ESTATE SERIES



METROPOLITAN SERIES



MIRAGE SERIES



PALM SERIES



PLAZA SERIES



SUNSET SERIES



URBAN SERIES



VENTURE SERIES



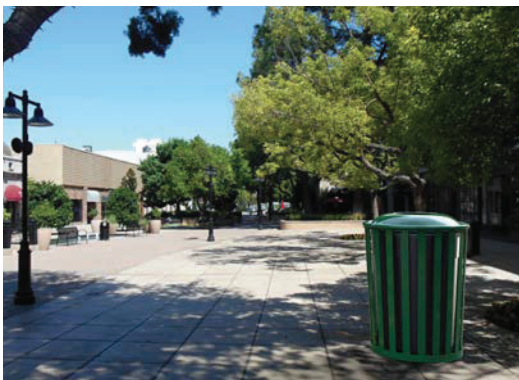


METROPOLITAN TRASH RECEPTACLE



THE ESTATE TRASH RECEPTACLE

is perfect for municipalities, office complexes, universities and apartment buildings. The all steel construction is fully fabricated in California and is BUYAMERICA compliant.



FEATURES AND SPECIFICATIONS

FEATURES

- Available in 32, 44 or 55 Gallon Capacity
- Convex Lid (pictured)
- 16 Gauge Spun Steel Lid
- 1/4" x 2" Steel Flat Bar
- 1" Rolled Steel Tube
- Plastic Liner (sold separately)

FINISH

- Powder Coat (3-5mil)
- *Specify RAL #*

MOUNTING

- Surface Mounted

