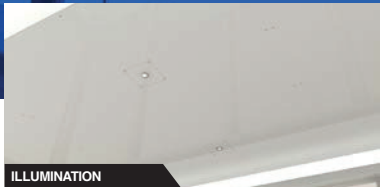




# JOURNEY SHELTER SYSTEM



ILLUMINATION



SOLAR POWER



OPTIONS / MAP CASE



OPTIONS / LEAN RAIL



OPTIONS / 2 SIDED AD PANEL



## FEATURES AND SPECIFICATIONS

### COST EFFECTIVE DELIVERY

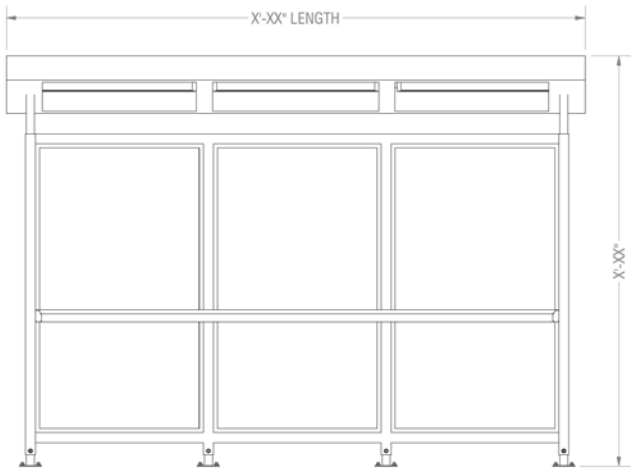
- Shipped in one piece, or on pallets for storage and multi-location rollouts

### INSTALLATION

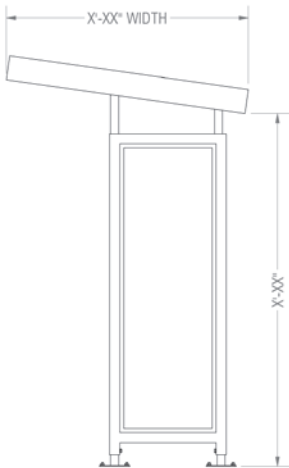
- Install on pre-placed anchors

### MAINTENANCE

- Extremely durable
- Individual components are replaceable if damaged
- Warranty terms to meet your project requirements



FRONT VIEW



SIDE VIEW

SIZE (WxL)	ROOF TYPE	ROOF PANEL	 Insignis.com   310.978.2000 sales@insignis.com 15542 Broadway Center St., Gardena, CA, 90248	WALL	FINISH	LIGHTING	CODE
3'-0" 6'-0" 4'-0" 7'-0" 5'-0" 8'-0" 6'-0" 10'-0" Custom	Flat = F	Aluminum = A Polycarbonate = PC		Perforated = P Polycarbonate = PC Glass = P Decorative Design = DD	Client to specify RAL color	None Solar Grid	<b>E</b>



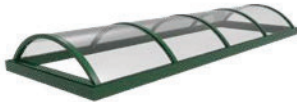
## ROOF AND PANEL OPTIONS

Not all roof and panel options are available for all eight Shelter Series designs.

### DOME ROOF



Aluminum Roof



Polycarbonate Roof

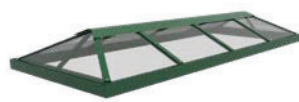


Aluminum Standing Seam Roof

### HIP PEAK ROOF



Aluminum Roof



Polycarbonate Roof



Aluminum Standing Seam Roof

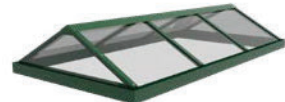


Tile Roof

### PEAK ROOF



Aluminum Roof



Polycarbonate Roof



Aluminum Standing Seam Roof

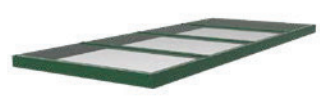


Tile Roof

### FLAT ROOF



Aluminum Roof



Polycarbonate Roof



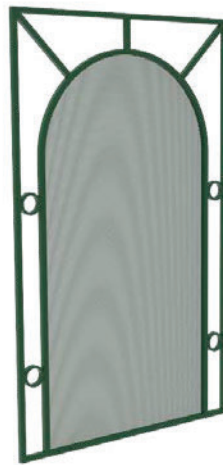
Aluminum Standing Seam Roof

### GLASS



**Glass Wall Panels**  
Create an open feeling while still being shielded from the elements.

### VICTORIAN



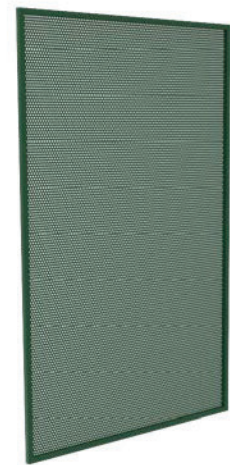
**Victorian Wall Panels**  
Creates a classic look that blends seamlessly into most environments.

### LASER CUT



**Laser Cut**  
Add almost any image to your shelter. Making it specific to your city.

### PERFORATED METAL



**Perforated Metal**  
Choose from a number of perforated metals to give the shelter a unique look.