

Main & Edinger Center

📍 1469 S Main St, Santa Ana, CA



Anchored by **DOLLAR GENERAL** market™

At Signalized Intersection
of Main St & Edinger Ave in the Heart of Santa Ana



RED MOUNTAIN
GROUP

Kristin Ambrose
Sr Vice President Leasing
714-460-1564
kambrose@rmrginc.com

Matt Pope
Leasing Associate
714-821-2178
mpope@rmrginc.com



redmountaingroupinc.com

Main & Edinger Center

Property Highlights

- **Retail Shopping Center at signalized intersection** of Main Street & Edinger Avenue in the Heart of Santa Ana
- **Main Street is a Primary Throughfare Serving the Trade Area**
- **Excellent Access and Visibility**
- **Heavily Populated Trade Area, In-fill Location**
- **High Traffic Counts** (71,000 ADT)

Demos

		
RADIUS	POPULATION	AVG HH INCOME
1 MILE	48,617	\$107,924
3 MILE	289,523	\$100,153
5 MILE	652,949	\$111,494

Source: Applied Geographic Solutions 2022



Site Plan



Main & Edinger Center
1469 S Main St, Santa Ana, CA



redmountaingroupinc.com

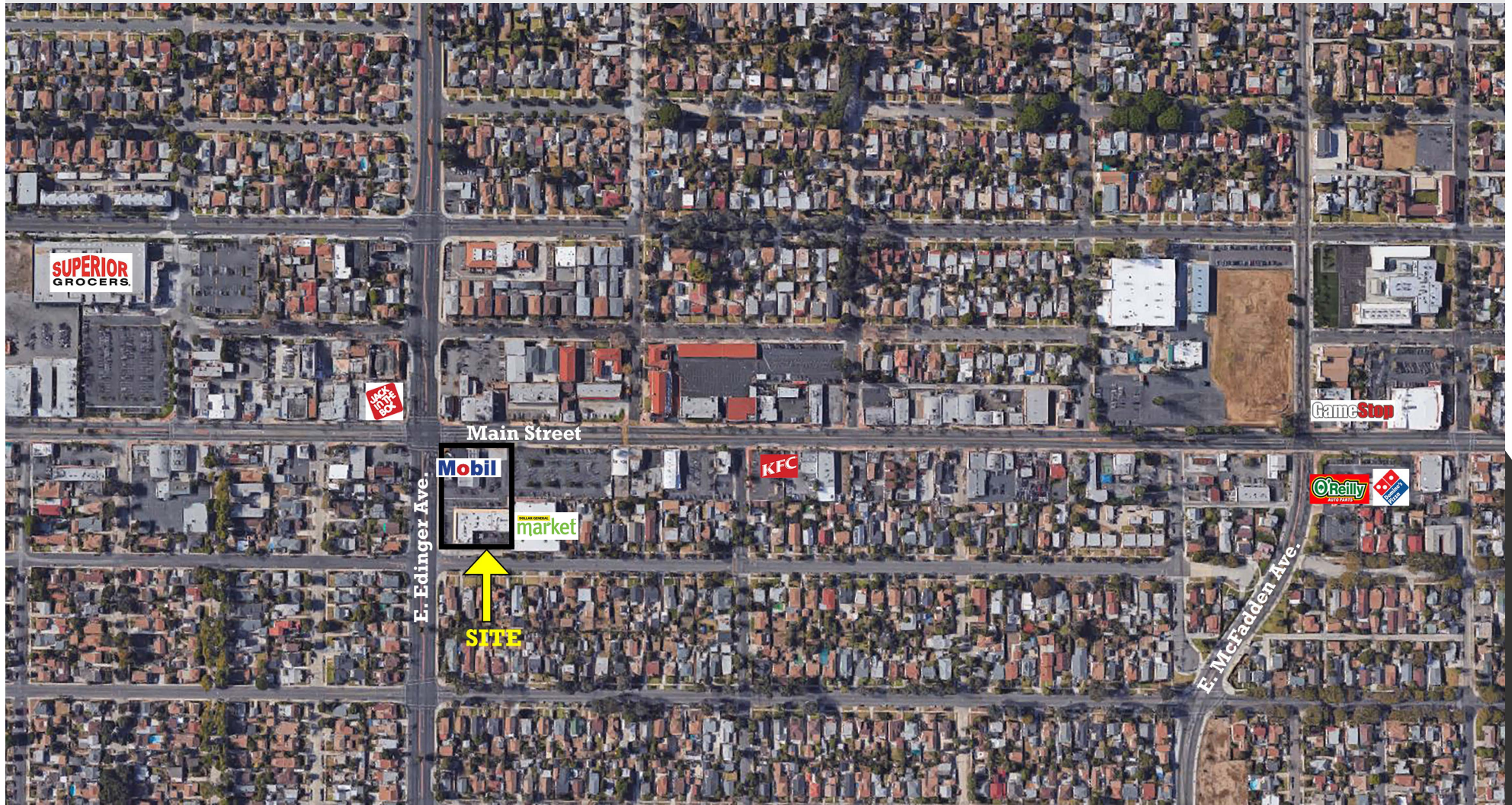
Kristin Ambrose
Sr Vice President Leasing
714-460-1564
kambrose@rmrginc.com

Matt Pope
Leasing Associate
714-821-2178
mpope@rmrginc.com



1234 E 17th Street, Santa Ana, CA 92701

Aerial



Main & Edinger Center
1469 S Main St, Santa Ana, CA



redmountaingroupinc.com

Kristin Ambrose
Sr Vice President Leasing
714-460-1564
kambrose@rmrginc.com

Matt Pope
Leasing Associate
714-821-2178
mpope@rmrginc.com

1234 E 17th Street, Santa Ana, CA 92701

