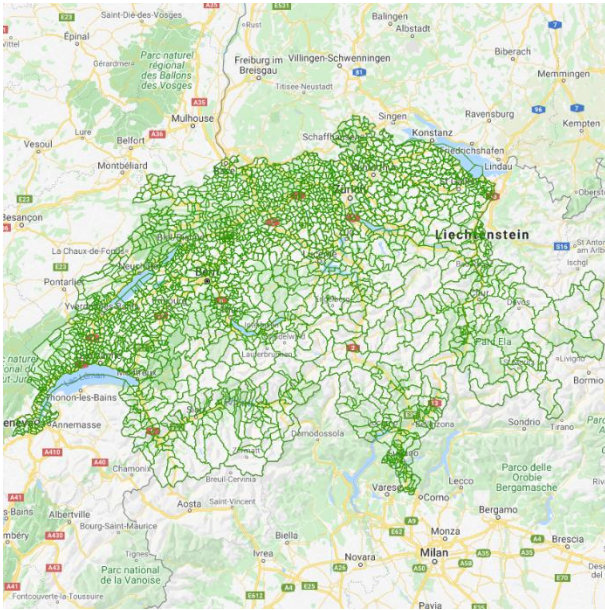


1. INTRODUCTION

The Swiss Municipalities Boundaries are provided by Swisstopo. The data provides a spatial reference for each of the Municipality boundaries in Switzerland. The layer is useful for providing a reference to the different areas within Switzerland, territory planning and hot spot mapping.

If you have any questions relating to the information in this document, please contact Geoplan Support on +44 (0)1423 722719, or email support@geoplan.com. The Support Team is available Monday – Friday, 9.00am – 5.00pm GMT, excluding UK public holidays.

2. IMAGES



3. DATA

Layer Name	Total Records
Districts	2240

Source – Swisstopo – Federal office of Topography

Recency – 2019

Geographical Coverage and Accuracy – Switzerland

Projection – EPSG:4326. WGS84

Available Formats – Shapefile

Layer Type – Boundary

4. DATA HEALTH

Data Health	Green
-------------	-------

- The most up to date District Boundaries for Switzerland

5. LICENSE INFORMATION

License type – Annual

Update cycle – Updated when required

6. FURTHER INFORMATION

Data Specification

Header Record	Description	Example	Data Type	Maximum Field Size
GEO_ID	Geoplan unique identifier	717821	Integer	N/A
MUNICIPALI	District name	Aadof	Character	50
ADMIN_ID*	Unique Identifier	CH20144551	Character	20
POP_TOT	Total Population	8885	Integer	N/A
POP_DENS	Population Density	445.52	Integer	N/A

* Import Key Column

Copyright

Copyright Information: GEOPLAN © Geoplan Spatial Intelligence Limited.