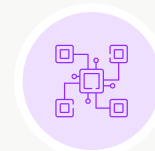
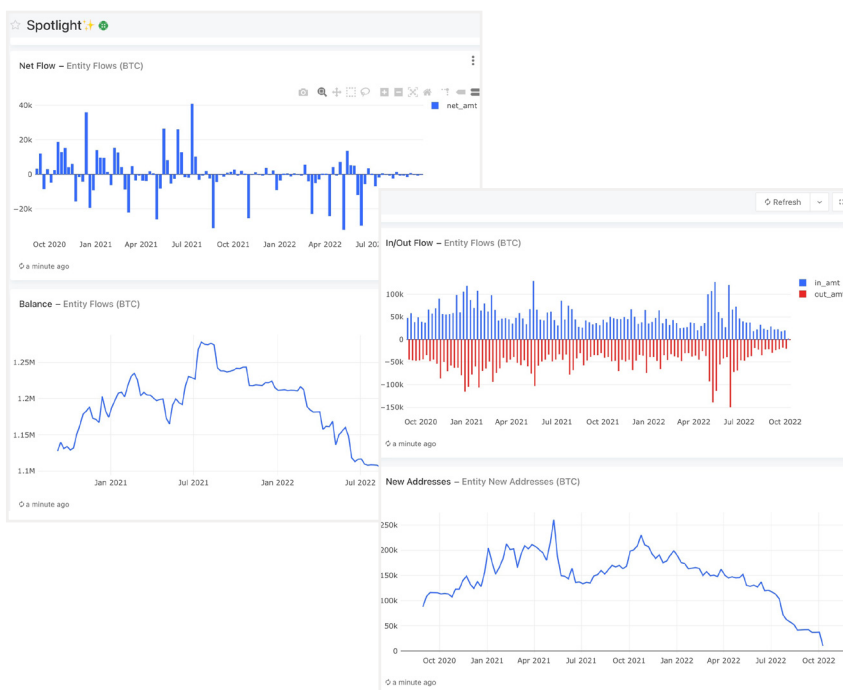


# Bet on crypto — with confidence

## Spotlight: Your intelligent blockchain platform

Elementus Spotlight demystifies blockchains and breaks down the barrier to entry by coupling the most comprehensive and tagged data set in the market with patented methodologies built to specifically — and transparently — trace the flow of funds. The result is a deep on chain intelligence including balances, flows, counterparties, participants and risks — with powerful analytics and intuitive visualizations for actionable insights, and the ability to compare each chain on a level playing field.



### Comprehensive & unified data

A single source of truth of the most comprehensive chain data sets on the market, so you can make intelligent and safe decisions with confidence



### Holistic overview

Deliver a next-level look at how each entity is performing with the deepest levels of data attribution, so you can compare, contrast, and make informed decisions for growth



### Risk management

Comprehensive data and deep levels of attribution enable gauging counterparty risk in real time

## Blockchain problems are data problems

Without a single source of truth in web3, it's hard to know who you can trust to work with. Without your own dependable data to reference for support, it's impossible. Lacking anywhere else to turn, businesses will often waste precious time and resources integrating multiple point solutions or freemium offerings that offer an incomplete picture because the data feeding in is inaccurate, outdated, or both. That's what it boils down to — and what Elementus solves for: **a data problem.**



### Limited Data

Incomplete and siloed blockchain data results in the lack of visibility into activity, making it impossible to map data attributions.



### Bad Intelligence

Without comprehensive and unified data, BI tools are useless, and leveraging data for better decision making is out of the question.

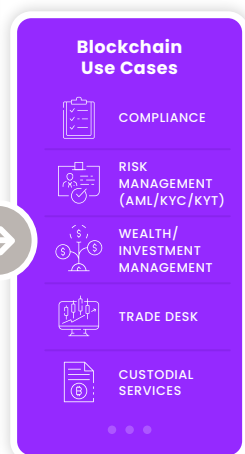
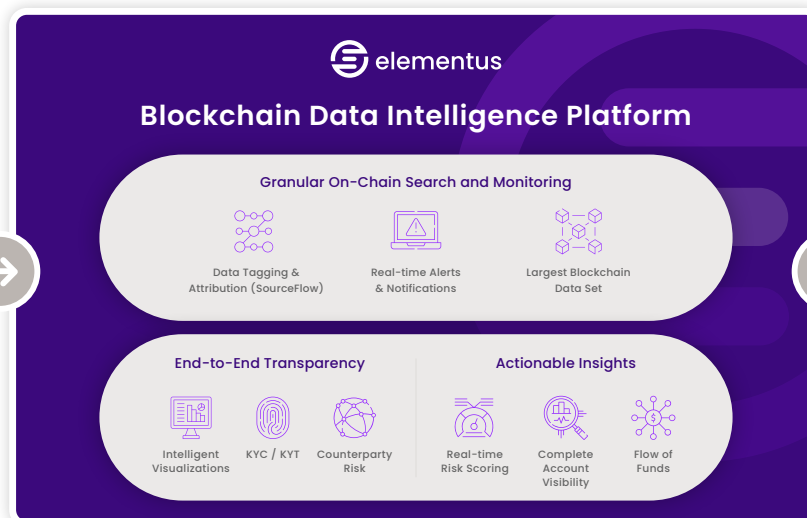
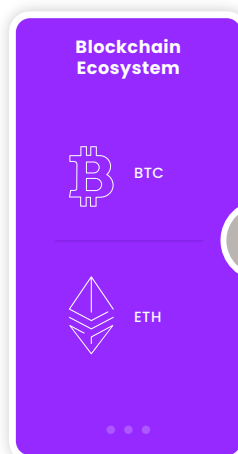


### Risk Vulnerability

Incomplete data equals an inability to see the full picture, making it easier for bad actors to evade detection from security defenses.

## Partner with Elementus for all your blockchain needs

Elementus is a data-first web3 company on a mission to help forward thinking, data-driven organizations of all sizes to leverage the power of blockchain. Whether you're investigating on-chain activities, identifying risk, discovering valuable market intelligence, or a combination of all three, our platform provides the most complete data set and sophisticated attribution capabilities on the market, resulting in the actionable insights you need to grow and prosper safely in a web3 world.



**Want to see it in action? If you're ready for us, we're ready for you.**

Reach out to [hello@elementus.io](mailto:hello@elementus.io), or visit [elementus.io](https://elementus.io)