

WOODWORKERS' ASSOCIATION OF N.S.W.

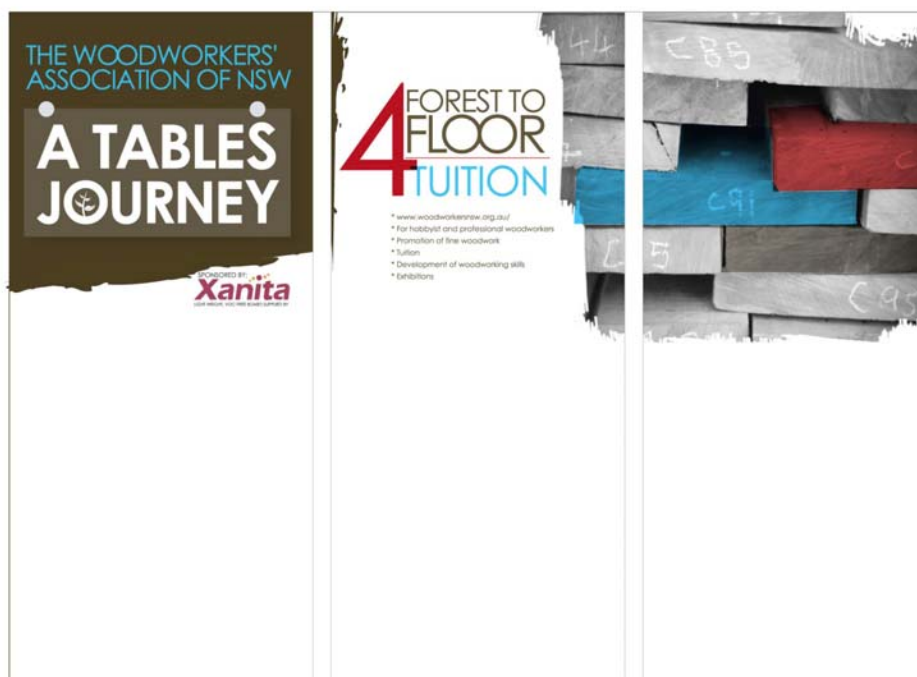


May - June 2008

www.woodworkersnsw.org.au

Timber and Working with Wood Show

13-15 June Show Ground, Moore Park



The Woodworkers' Association of NSW stand at the Timber & Working with Wood Show will feature the journey of a table through the stages of development from design to finishing.

Join members on the stand and enjoy the Show
Details page 3

Next meeting: Monday 2 June 2007 7:00 PM for 7:30

Guest speaker: Richard Parsons (see "From the Chair" p.3)

POWERHOUSE MUSEUM ULTIMO

Parking available at the end of Macarthur St adjacent to the museum

Meeting fee \$4

Visitors welcome—first visit free.

The Woodworkers' Association of NSW, Inc

ABN 51 544 261 324

Correspondence to PO Box 1016 Bondi Junction NSW 1355

Chair Phil Greenwood (02) 9325 2874 pgreenwood@wentworthchambers.com.au

Vice Chair Phil Gould (02) 4423 3295 pmgould@bigpond.com .au

Secretary Alec Horley 0418446513 ahorley@ozemail.com.au

Treasurer Miko Nakamura (02) 9805 1775 miko.nakamura@optusnet.com.au

Committee members

Peter Hunt (02) 9369 1193 p_j_hunt@msn.com.au

Phil Lake (02) 518 4150 philjanlake@yahoo.com.au

Kim Larymore (02) 9858 1578 Larymore@tpg.com.au

Warwick Wright (02) 9555 7960 warwick@grainwoodworks.com.au

Frank Duff (02) 9896 4017 fwduff@optusnet.com.au

Exhibition Committee Cath Fogarty (Co-ordinator), Warwick Wright, Tracy Gumm, Adam Crosland, Phil Gould.

Membership Secretary Peter Hunt PO Box 1016 Bondi Junction NSW 1355 0418 867 870 p_j_hunt@msn.com.au

Webmaster Paul Barton (02) 9608 8195 paullbarton@bigpond.com

Editor Paul Barton **Assistant Editor** Warwick Wright

Aims of the Woodworkers' Association of NSW, incorporated

To provide a forum for networking and to encourage camaraderie amongst all those who work in wood.

To promote public awareness and appreciation of fine woodwork.

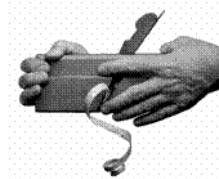
To encourage creativity, design and development of skills and application by all woodworkers.

To represent professional woodworkers and promote sustainability of fine woodwork as a career.

To promote awareness of environmental issues including encouraging the judicious use of our precious native timber resources and use of sustainably harvested, recycled and reclaimed timbers.

Opinions expressed in articles in this newsletter are not necessarily those of the editor or the Committee of The Woodworkers' Association of NSW Inc.

Articles for the next newsletter should be forwarded to Paul Barton by July 2008.



**Welcome to new
and returned mem-
bers.**

John Cross

Peter Stibilj

John Madden

Gordon Joseph

woodworkersnsw.org.au

For contact details, discounts, members gallery and much more

Membership is open to anyone interested in woodworking, both hobbyist and professional. The Association meets every second month; the first Monday of every even month.

From the Chair

The first month of being “in the chair” has been illuminating. I have quickly come to realise just how many skilful and talented woodworkers we have in NSW.

What is it about wood that makes people, from so many different walks of life, so passionate?

Perhaps it is because every piece of wood has had a previous life, and sometimes many lives. As part of a tree, starting from a mere seed blown into a paddock or deliberately planted, it experienced the delights and ravages of the natural environment. Then it was felled, milled in some fashion or other and handled by countless unknown people – perhaps for construction of a home, or a piece of furniture or perhaps both. Or maybe it supported a railway track and watched coal hoppers pass over it before “retiring” to someone’s garden.

And when finally it comes into our hands, it is offering itself again for a new life, offering us an opportunity to be creative or productive or both. The “personality” of the particular piece of wood entices us with ideas. It inspires us to care for it, treat it with respect, work with it to get the best result. Like music, wood can stir the soul. For some it can provide comfort and support in a world so removed from the natural environment.

And it seems that wood does something to people who enjoy working with it. Both professional and amateur woodworkers often seem to share a number of admirable personality traits – integrity, humility, generosity and respect for others. These are not common qualities in many profes-

sional and business groups.

Admittedly it is early days, but I have yet to come across a woodworker who is not willing, indeed delighted, to help another person with a piece of advice, or a suggestion or a helping hand with a project.

As an Association of such people, we can be a force for good. We can foster the work of our professional members. We can share knowledge and information with each other. We can enhance our skills together. And we can inform and show the community the importance of cherishing our natural environment and respecting its products. And we can laugh and enjoy ourselves at the same time.

On a related note, I recently went to Mudgee to stay in some restored railway carriages which had been lovingly placed on a hilltop by Scott McGregor, a crazy and delightful railway enthusiast and DIY television presenter (see www.otr.com.au and click on Ruwenzori retreat). Whilst in the area my wife, Wendy, and I went and visited one of our members, David Davenport, at his nearby workshop. After initially training as a cabinet maker, David worked for many years as an architect in Sydney before moving to the country.

Examples of his work can be seen on the WWA website in the Members Gallery section. Apart from his own work, David also assists HSC students doing their design and technology projects. Exhibiting the very qualities that I have referred to above, David kindly showed us through his workshop and even his fertile vegie garden. *

At the next general meeting on Monday, 2 June, Richard Parsons of Canaple Timbers will be telling us about the ways he salvages locally grown timbers and mills

them. In the past Richard has hosted workshop visits from Association members to his premises at Tennyson and I have heard numerous stories about his wonderful set-up there. I am hoping we can persuade him to have us back later in the year. He has been a generous supporter of the Association and we look forward to welcoming him back.

As a sneak preview, at the August meeting Tracy Gumm will be telling us about her recent visit to Sweden where she represented Australia in a collective wood-working workshop. Another fascinating opportunity for us to learn and appreciate the skills of innovative and clever woodworkers.

Finally I would like to encourage all members to come to the upcoming Timber and Working with Wood Show on 13 to 15 June at Fox Studios, Moore Park. There is always a ton of fascinating things to see relating to wood-working in all its different facets.

The Association will have an interesting and innovative stand of which the members can be proud. Please come and spend some time on the stand, see what we have done and spend some time talking to members of the public who may be interested in what the Association does. And of course don't forget the raffle where there are lots of goodies to be won - it is an important source of income for our Association and if everyone contributes, everyone benefits.

Encourage your friends to come along, get involved and share this wonderful passion.

Phil Greenwood

* David Davenport's workshop will be featured in a subsequent issue of the newsletter. Ed

Member's Classifieds

Richard Crosland's School of Fine WoodWork

Learn with the master. Richard Crosland's School of Fine Woodwork operates small, hands-on classes for students of all levels.



The friendly, creative atmosphere fosters rapid progress and many beautiful pieces are the lasting result.

All tools provided and work in progress can be stored at the Alexandria workshop.

Call Richard at the school: 9313 4142

"USER" BEDROCKS-Fettled Stanleys Repairs and Service

Academy HSS Irons
G15 Rust Preventative
Trade Prices on:
DMT Diamond Plates
King Waterstones

Jim Davey 4447 8822(w)
4447 8790(ah)
JDAVEY@bigpond.com



Terry Gleeson furniture maker and woodwork teacher

1191 Old Northern Road
Middle Dural, NSW 2158

Phone: 02 9651 1012

Fax: 02 9651 1341

e-mail: thechairmaker@ozemail.com.au



Otto & Son Wood Carvers & Sculptors

131 Queen St
Beaconsfield

Small classes in woodcarving from decorative furniture carving to ornamental & sculptural work. Beginners to advanced.

Call Laurens on 02 9698 8637 /
0414 800 107



www.anglemag.com

A revolution in precision angle joinery
NOW available—via phone or the web

Zahrina Snell Phone 0413 33 88 26
Fax (02) 9683 6053

Special offer for members
See page 12

For Sale Blackwood and Myrtle various sizes

John Brassell
Tel 4576 1535
Mob 0414 458 829

dbr33063@bigpond.net.au

WORKSHOP 101 CLASSES

- * Introduction to Woodworking
- * Furniture Making
- * Veneering Masterclass with guest instructors Neil & Pam Erasmus

Classes are hands-on & small, we have a well equipped workshop and are located close to the city.

To get more info contact Max
on 9516-0380 / max@irminsul.com.au

Timber & Working with Wood Show

Continued from front page

Hordern Pavilion, Sydney
13-15 June 2008

FOREST TO FLOOR: A TABLE'S JOURNEY

The newly designed stand made from 100% recyclable material* invites the public to participate in the process of designing and making fine furniture. The Association has chosen a table to illustrate the development from conception to finished article.

The Eco- friendly stand is made from Xanita X-Board manufactured from 100% post consumer, recycled paper fibre waste. The material has been generously donated by Xanita.

The stand is divided into sections to represent the key stages of a table's development.

- Design
- Selection of materials
- Construction and
- Surface preparation and finishing.

The stand will be a source of inspiration for woodworkers, students and anyone interested in woodwork. The Association offers a range of activities including

- Demonstrations
- Tuition in fine woodwork
- Exhibitions
- Sources of discount materials and equipment
- Bi monthly meetings and networking.

Continued next page

ASSISTANCE FROM MEMBERS**Can you provide a table for the stand?**

We need a range of styles, construction methods and finishes. Finished tables and work in progress, scale models and prototypes required.

Join members on the stand and receive free entry to the show.

Assistance is required for

- Promoting the Association
- Advice on commissioning
- Experience with design, construction and/ or finishing.
- Selling raffle tickets
- Helping out!
- Pack up of stand

Offers of help for any of the above would be appreciated.

Please contact
Kim Larymore
 (02) 9858 1578
 0403 015 266

Email larymore@tpg.com.au

The Competition**Interested in exhibiting your work?**

There is still time to enter the competition run by the TWWWS. Valuable prizes.

Entries close 2 June

Visit go to <http://www.workingwithwood.com.au/sydney/competitions.htm>

Reminder: Raffle tickets

Please return by 6 June to PO Box 1016 Bondi Junction 1355



A model of the new Woodworkers Association stand. Join us for a whole new experience of the Timber & Working with Wood Show.

Exhibitions

Aris Ruicens, Wood Artist

Most woodworkers are familiar with the place of functionality in their work and, for some, function is all important.

I would guess that Aris Ruicens considers form and line as the driving force behind his decorative work with function being of far less importance.

It therefore came as a surprise to learn that he had picked up first prize at the Hunters Hill Art and Craft Show in the "functional section". Aris is not sure whether the winning piece

"African Spice" is made from Robinia or White Cedar. Feature carvings are in Brazilian Walnut with insitu epoxy resin casts and a crest made from a nylon paint brush.

Other work entered in the show include: a cradle basket from Beefwood and Buloke; a tripod vase made from Claret Ash; and a lidded bowl in Blackwood and resin inlay.

Warwick Wright



Cradle basket



African Spice

Look out for upcoming exhibitions by members.

Phil Gould & John Gallagher, Depot Gallery, August 2008

Ian Factor & Alex McDowell, Peter Rozea & John Dixon. Gig Gallery Glebe, November 2008

Paul Nicholson, David Norrie, Ed Garcia & Chris Watt as part of Splinter Workshop exhibition at Sydney University. Early 2009

Woodworkers Association, Depot Galleries I & II, August 2009 (see page 11)

The last meeting including AGM 7 April

The AGM was held on 7 April followed by a presentation on veneered boards by Alan Perry.

Welcome to the new committee. Phil Greenwood was elected Chairman with Phil Gould as Vice Chairman. Miko Nakamura takes over as Treasurer and Alec Horley as Secretary and Public officer.

The other members of the committee are: Kim Larymore, Phil Lake, Peter Hunt, Warwick Wright and Frank Duff.



Phil Greenwood



Miko Nakamura



Alec Horley



Phil Gould

Former Exhibiting Members

With the change in the Association's Rules in 2007, the former membership category of "Exhibiting Member" ceased to exist.

A new award—to recognise the former exhibiting members contribution to the Association—was announced at the AGM.

Each of the former exhibiting members eligible for the Awards have been given a *Certificate of*



John Brassell (right) being presented with his award by the outgoing Chairman at the AGM

Recipients of Awards

Fred Blake
John Brassell
Michael Borton
Jim Davey
Rodger Gifkins
Geoff Hanna
Laurens Otto

Achievement in Fine Woodwork.

Let us know if you think you are eligible

The Association membership records were not maintained over a period of years sufficiently well enough to identify all members who were, or entitled to be, Exhibiting Members.

If you who have maintained continuous membership and were entitled to be an "Exhibiting Member" please advise the Secretary, Alec Horley.

Brush Off the Dust and Find the Woodie Below

David Hire interviews member John Gallagher



Hello, once again. This month we do have an interview. You may not have seen him at our meetings because he normally teaches on Monday nights. However you might have seen him on cable TV as co-presenter of the woodworking show called **Milton Woodshop**. He is Mr John Gallagher.

Some of you might not know that cable TV does have shows on woodworking amongst all the other junk. Mostly from the US are shows such as *New Yankee Workshop* with Norm Abrams (going about 20 years). *Woodworks with David J Marks* (now writing articles for *Fine Woodworking*).

One I would like to see is *The Woodwrights Shop* with Roy Underhill (going 25+ years in the US.) Uses traditional ways and tools.

Do we have any dreamers out there who could see the possibility of a regular Australian wood working show??

Let's meet some one who has had a go. Welcome John Gallagher.

dh **John, you graduated from Sturt in what year?**

ig 2003

dh **Did you have a career in some other area prior to Sturt?**

ig Yes, I owned a deli for 3 years plus general hospitality experience.

Dh **You teach the Monday night courses at Sturt. How long have you been doing that?**

ig Since 2005

dh **You are also teaching the first full time 12 week course that Sturt has run. How is that going?**

ig I think it is going well. But it is challenging for me and the students.

dh **You seem to be packing a lot into 12 weeks based on the complexity of the projects undertaken. How do you do it?**

ig I don't know, just keep at it.

dh **Do you see any major changes in the 12 week course as you are now about 3/4 way through?**

ig Making a cabinet is difficult for most students. However those with a technical drawing background seem to do better.

dh **What aspect of woodworking is your speciality? turning? marquetry?**

ig I don't have a speciality, although I do make a lot of cabinets.

dh **Do you have a favourite species of wood you like to use?**

ig I have a handful of favourites but I use a huge variety to please the customer. I like the look of silver ash and it is easy to work. I like the look of New Guinea rosewood. And, of course, a light coloured spotted gum but it is horrible to work.

dh **What is your favourite item of woodworking that you like to make?**

ig Cabinets, drawers and doors.

dh **What is your favourite finish?**

ig I have been experimenting lately. I like Feast Watson Satinproof and over the years I have used a lot of Scandinavian oil. Lacquer when the piece is veneered.

dh **Is there a particular era of furniture that you like and do you make pieces in that style?**

ig People have frequently commented that my work has an arts and crafts look.

dh **Do you have your own workshop facilities? Tell us about it.**

ig Yes, in Botany commercial premises where I lease a corner of a factory.

dh **What is likely to be the next power tool you obtain?**

ig I need a new cordless drill, and a vacuum bag for veneer pressing would be good.

dh **And the next hand tool?**

ig A set of Lie Neilson chisels

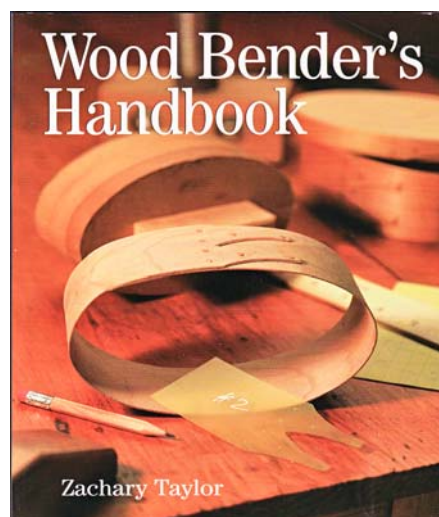
Continued next page

Brush Off the Dust

from page 8

- dh **What is your favourite thing about woodworking?**
 jg The overall reward of starting with raw material and making something of beauty out of it
- dh **Least favourite?**
 jg Sanding
- dh **What has been your greatest success?**
 jg Running a business for 5 years.
- dh **Would you like to share a wood-working embarrassment?**
 jg I haven't made that many but recently I made a drawer 20 mm undersize.
- dh **Now your TV show, Milton Woodshop. Each episode was for 30 minutes. How long did it take to film a 30 minute episode?**
 jg It took 4.5 days to film 6 episodes. We were there from 6:00 am to 7 or 8 pm. Sixty to seventy percent of the work was filmed then edited. And there was preparation time before. At the end Phil Gould and I both needed to recover.
- dh **What is your favourite joint?**
 jg Mortice and tenon.
- dh **Do you prefer machine power or are you a traditionalist?**
 jg Machine power so long as it doesn't compromise the job.
- dh **How can fellow woodworkers contact you?**
 jg johng@piecefurniture.com.au
- dh **What would you like to tell your fellow woodworkers?**
 jg Enjoy it and keep doing it.
- dh **Any closing comments?**
 jg I am still enjoying it so I will keep doing it.

John, thank you for your time and all the best for your woodworking future.



Book Review by Michael McGrath

Wood Bender's Handbook

For all you bent woodies this is a case of too little, too late, but for the inquisitive, adventurous or simply creative this book is a treasure trove. Almost anything you need to know about small-scale bending of wood is in this handbook.

Lamination is briefly mentioned, but the core of the *Wood Bender's Handbook* deals with hot bending, whether in hot water, steam, with hot air or around a heated rod or pipe. Cold and dry bending are also covered as is kerf bending.

Zachary Taylor shows how to make effective molds or formers and set them up so that wood can be placed and bent as quickly as possible, before it cools down — just eighteen seconds from steamer to fully clamped for a chair back, for instance.

Tables in the appendix provide a ready reference for matching bending method to project, but set out bending characteristics for a variety of Euromerican timbers only. Aussie species are conspicuous by their absence, as usual.

This is a thoroughly enjoyable book to read and should spark the imagination of even the most moribund woodworker. When it's time to think outside the rectangular box, pick up the *Wood Bender's Handbook* and get curvaceous.

The Wood Bender's Handbook

Zachary Taylor, Sterling

144pp Price: to be advised

Available from all good bookstores.

For wholesale enquiries, please contact Capricorn Link:
 sales@capricornlink.com.au

Editors Note

Capricorn Link has announced that it has been appointed exclusive distributor for complete range of The Taunton Press Books and DVD's in Australia. Further details as they come to hand.

A Collection of Member's Work



Alex Springall



James Carr

The Timber and Working with Wood Show presents an opportunity for members to display their work:

- the Association's stand as part of "Forest to Floor"
- "Putting Timbers on Show" competition, or
- The Show's professional stand.

The competition and professional stand are run by the TWWWS organisers and details are available from the website (p.4).

Members wishing to contribute to the Association stand should contact Kim Larymore (details p.2)

Not everyone will be able to have their work on show so here is a collection of images of members work collected over the past few years.



David Davenport



**See more of members work in
*The Members Gallery at***

www.woodworkersnsw.org.au



David Norrie

Peter Hayes



Ian Factor



Nick Statham



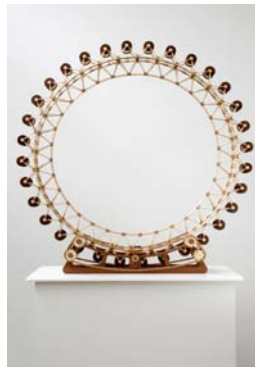
Evan Dunstone



Tony Kenway



Ian Factor



Richard Crosland



Tracy Gumm



Leon Sadubin



Robert Chapman



Paul Nicholson

New Exhibition for 2009

Following the success of Design + Wood 2007, the Association will be staging a new exhibition in August 2009. Cath Fogarty, co-ordinator, is making preliminary arrangements and we are currently discussing sponsorship proposals.

Members who have nominated as being professional or semi-professional will be contacted with details of entry fee and selection criteria.

Start planning that special exhibition piece now.

Contact Warwick Wright or Phil Gould

DISCOUNTS FOR MEMBERS

Allwood Nowra

Ph/Fax 44233295

Cabinet Timbers

www.philipgould.com.au

Anagote, Marrickville, 9558 8444,
Cabinet timbers, 10%**AngleMag**, Oatlands,
www.anglemag.com 0410344144,
Zahrina Snell, Magnetic saw guide,
10%**CARBA-TEC**, Auburn,
9648 6446, David Croaker,
Woodworking tools & equipment,
(varies)**F & K Electrics**, Stanmore,
9519 7997,
Power tools, 10% (varies)**Feast Watson**, H/O Scoresby Vic.
www.feastwatson.com.au
1800 252 502, Timber finishes**Roger Gifkins**, via Kempsey,
www.gifkins.com.au
6567 4313, Dovetail jig, 10%**Hare & Forbes**, Northmead,
www.machineryhouse.com.au
9890 9111, Machinery (varies)**Henry Bros Saws**, Vineyard, 9627
5486,
Saw blades, knives, cutters, (Trade
prices)**HNT Gordon**, Alstonville,
www.hntgordon.com.au
6628 7222, Classic plane makers,
10%**Howard Products**, Tamworth,
www.howardproducts.com.au
1800 672 646, Orange oil, wood care
products**Laminex Industries**, Caringbah,
132 136, Sheet products**Liberon Enterprises**, Fyshwick
ACT, www.liberon.com.au
6280 9720, Eric Bray, Finishing mate-
rials, 25%**Major Woodworking Equip-
ment**, Padstow,
www.majwood.com.au
9708 3233, Ryan, Equipment, 5% -
15%**Mathews Timber**, St Marys,
9833 3100, Cabinet timbers**Natural Paint Place**

02 9519 0433

sales@thenaturalpaintplace.com.au

www.energyandwatersolutions.com.au/oil/oils.htm

www.livos.com.au

583a King St, Newtown, Sydney
NSW 2042
10% discount**Nover & Co., Eastern Creek**,
www.nover.com.au 9677 3200,
Sheet products, kitchen hardware**Total Tools**, Wetherill Park,
www.totaltools.com.au
9203 1950, Hand & power tools**Trend Timbers**, Mulgrave
(Windsor),
www.trendtimbers.com.au
4577 5277, Adrian Clark, Cabinet
timbers, 7.5%**Veneercraft**, Padstow, 9533 4294,
Frank Kletzmayer (TBA)
Wood veneers, 10%**Warringah Timbers**, Dee Why,
9981 3733, Timber suppliesSAW BLADES, KNIVES AND CUTTERS
TO SUIT EVERY INDUSTRY541 Old Hawkesbury Rd Vineyard 2707
Tel. 02 96275088 Fax 02 9627 2707
Email hbsaws@acay.com.au**FELDER NSW**
Pty LtdFelder NSW Pty Ltd
Unit 2, 125 Russell Street
Emu Plains NSW 2750
Tel: 02 4735 1011
Fax: 02 4735 8222 Email:
sales@felder.net.au
Homepage: www.felder.net.au**Offer to Members**CARBA-TEC (NSW) offers the following discounts
to members, but only on production of their mem-
bership card at time of purchase:

Machinery – 5% discount.

Merchandise (books, project gear, hand tools, etc
but excl. Lie-Nielsen, Woodcut) – 5% discount.Clock movements (excl. grandfather clock move-
ments) – 5% discount.Exclusions: Discounts do not apply to stock already
on special/sale or at reduced prices.Variations: Conditions to this offer may change at
manager's discretion.**CARBA-TEC Australia's Largest Range of
Tools for Wood.**Location 113 Station St. Auburn (cnr Adderley St.
West) – near the M4 Motorway.

Contacts:

Sydney@carbatec.com.auPhone (02) 9648 6446 Fax (02) 9648 6443
www.carbatec.com.au

Mother of Pearl & Sons Trading

advise that hardware and finishing products are now sold by

THE HARDWARE Co Pty Ltd
113 Parramatta Rd, Annandale
Near the corner of Johnson St

Contact Damien Wood

www.thehardwareco.com.au
Phone 02 9569 6255

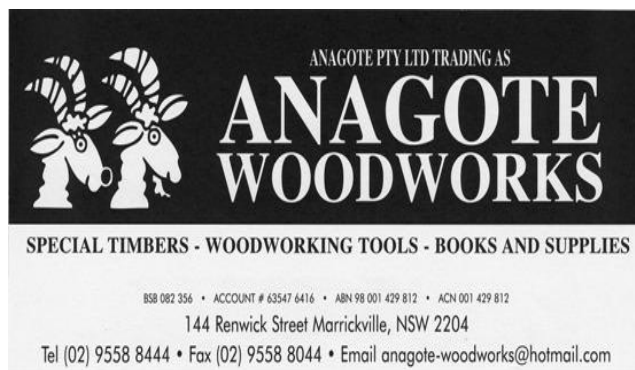


MWE MAJOR WOODWORKING EQUIPMENT

ABN 85 071 918 402
55 Gow Street, Padstow
PO Box 165
Padstow NSW 2211 Australia

Telephone: (02) 9708 3233
Fax: (02) 9708 5556
Email: majwood@tpg.com.au
www.majwood.com.au

Distributors of Jet, Powermatic, Performax, Freud and CMT
For more details see www.majwood.com.au



ANAGOTE PTY LTD TRADING AS
ANAGOTE WOODWORKS

SPECIAL TIMBERS - WOODWORKING TOOLS - BOOKS AND SUPPLIES

858 082 356 • ACCOUNT # 63547 6416 • ABN 98 001 429 812 • ACN 001 429 812
144 Renwick Street Marrickville, NSW 2204
Tel (02) 9558 8444 • Fax (02) 9558 8044 • Email anagote-woodworks@hotmail.com



TREND TIMBERS PTY LTD
TIMBERS
for any project.

BIG or small
Australian & Exotic Timbers,
we have it all for your next masterpiece!

Over 80 commercial species in stock.
We will courier, post or truck to almost any destination Phone us today for our species list

Trend Timbers Pty Ltd
Lot 1 Cunneen St Mulgrave NSW 2756
Ph: 0245 775277 Fax: 0245 776846
Email: sales@trendtimbers.com.au
www.trendtimbers.com.au



HOWARD PRODUCTS FOR WOODWORKERS
RESTOR-A-FINISH Removes marks fast
ORANGE OIL for the best oiled finish
FEED-N-WAX easy to apply liquid wood wax
OTHER FAMOUS PRODUCTS INCLUDE
ORANGE TUNG WOOD OIL tung oil that's
easy to use containing no dangerous chemicals
and **FIXSTIX** fills cracks, doesn't shrink.
Help at info@howardproducts.com.au
www.howardproducts.com.au



The world's safest table saw, with finger sensing technology.
www.gabbett.com/msawstop.htm
Ring Gabbett Machinery on 9831 5044.



Timber Merchants & Sawmillers

Distinctive Timbers
are what Tasmania is world renowned for!
We mill, dry & stock select grade furniture
timber & building materials

Distinctive Timbers International
87 Drake St
Devonport Tas 7310

Phones 03 6424 8202 Mobile 0407 111 903
Fax 03 6424 8202

www.distinctivetimbers.com.au/

**Available Free of
Charge**

**Pecan Timber recently
felled, average diameter
15"**

**Phone : (02) 4578 2994
evenings only
Gretchen Wheen ,
Richmond NSW.**

SPECIAL OFFER FROM ANGLEMAG

PURCHASE 1 x ANGLEMAG with 1 x Pull Saw (255mm/0.5mm) for only \$199

RECEIVE FREE

**1 x spare Saw Blade (0.3mm) PLUS...
1 x Instructional DVD (36mins)**

(VALUE OVER \$80) (Postage separate)

**To order please call: Tel: 0413 338 826
(WHILST STOCKS LAST)**



ANGLEMAG
SYDNEY AUSTRALIA



The World's Most Precise And Versatile Joinery Tool For Woodworkers

If undelivered please return to
PO Box 1016
Bondi Junction
NSW 1355

POSTAGE
PAID