

Woodworkers' Association Newsletter

ABN 51 544 262 364

WOODWORKERS' ASSOCIATION OF NSW



Special points of interest:

Next meeting is the Annual General Meeting to be held at the Putney Tennyson Bowling & Community Club, Frances Rd, Putney (map page 5) on Monday the 4th April.

Terry Gleeson will also be demonstrating the making of shooting boards.

Inside this issue:

Kauri Project	1
Last meeting	4
Aster Show	5
Brush the dust off	6
Health and Safety Policy	8
When flood interrupted play	10

The Kauri Project

The next in our series featuring members who participated in the Kauri Project. In this newsletter we feature Richard Parsons and Thirston Morris.

Most of us have visited Richard's facilities where he has the same toys as the rest of us but his are a whole lot bigger than ours!

Richard was natural choice for processing the old Kauri and getting it ready to distribute to other contributors.

It is fitting that we feature Thirston as well because he is also the subject of David Hire "Brush the dust off" interview

Richard Parsons

'My custom designs incorporate appropriate use of individual timber species, good design, workmanship and finishing, aimed at producing valued items which have lasting appeal and satisfaction for my clients. I enjoy working with timber as a material, from the newly harvested log through to the finished item. The challenge is to bring out the best in the material.

I assisted in taking down

this Kauri Tree at the Royal Botanic Garden and then transported and milled the logs. I reflected on the significance of this tree. At the time the tree was planted it was nearing the end of the great "age of sail" and, historically, kauri has played an important role for boat building among its many other uses, and so I decided to make a sailors chest to recall this time and tradition.'

Awards

- 2000 Woodmasters at the ABC -The Boral prize for 'The best piece in Australian hardwood' for a Dining setting in recycled blue gum.
- 2006 MBA Excellence in Construction Awards - 'Best use of Timber'



WWA Committee

Chair: Phil Greenwood

02 9235 2874

phgreenwood@optusnet.com.au

Secretary: Gordon Joseph

#02 9488 9191

gwjoseph@bigpond.net.au

Treasurer: Miko Nakamura

#02 9805 1775

treasurer@woodworkersnsw.org.au

Membership secretary:

Peter Hunt

#02 9369 1193

p_j_hunt@msn.com.au

Frank Duff

#02\$ 9896 4017

fwduff@optusnet.com.au

Peter Harris

#02 9879 3329

peterh47@ihug.com.au

Kim Larymore

#02 9858 1578

klarymore@optusnet.com.au

Peter Dunn

02 4576 1590

bentneck@iprimus.com.au

If you would like to join the Committee, or would like to be more involved in the work of the Association, please call Gordon Joseph and let him know. The more the merrier ...

From the chair



The AGM

Another year has passed and the Annual General Meeting has come around again. It's time for new office-bearers and committee members to be elected. Please note the meeting is on **Monday, 4**

April at the Putney Tennyson Bowling & Community Club, Frances Rd, Putney (map inside).

There is lots to do and many hands make light work. So if you have been thinking that you might like to be a bit more involved without committing too much time, please nominate for a position or membership of the committee. Nomination forms are available from our excellent Secretary, Gordon Joseph. I can promise you that everyone who nominates will get a role of one kind or another that they will enjoy.

Speaking of enjoyment, Paul Barton loves editing this newsletter. But for a number of reasons, he needs to pass the baton. If you have any smouldering desire to have the title "Editor" after your name, or are just willing to help, now is a great time to let us know. Paul says he will be eternally grateful. So will we.

I do wish to formally thank each of the office-bearers, the committee members and our Editor for their efforts over the past year. We

have had fun and things have run smoothly. Financially we are sound and our activities are expanding and increasing. Things are looking good.

February meeting

David Boucher gave a delightful and fascinating talk at our February meeting. Some of the detail is captured in the article and photos in this newsletter. I urge you to visit his website (boucherandco.com.au) and his gallery in Queen St, Woollahra to be captivated by the range of extraordinary designs and the craftsmanship involved in his work.

Queensland floods

At the last meeting I reported on the fate of Richard Vaughan, one of our life members, whose workshop (or "shedudio" as he calls it) was flooded in Brisbane. Further details are in the newsletter. Our Constitution does not permit Association funds to be used for the benefit of individuals, so members at the meeting decided they would

personally support Richard and \$400 was raised and forwarded to him. He was very appreciative.

Fusion Australia

On a similar theme, we have been involved in supporting the work of Fusion Australia which works with school children with behavioural problems in Western Sydney. At their request, we provided the raw materials for a project and Peter Dunn is spending his Wednesdays working with 4 boys.

Workshop

Meanwhile, we continue to develop the Workshop as a useful resource for all members. I do wish to thank John Brassell for his recent donations of a Lamello biscuit machine and a mortising attachment for the drill press. If anyone wishes to donate some good, old chisels or planes for use at the workshop, they would be much appreciated.

From the chair—Cont.

In conjunction with the upgrading of the Workshop, an OH&S assessment has been performed and a safe working practices policy has been adopted by Committee. The terms of the policy are published in this newsletter and I commend them to you.

Royal Easter Show

This year the Royal Agricultural Society has decided to showcase woodwork at the Royal Easter Show. About time too! They have invited us to participate and demonstrate what we do. This is an opportunity for the Association to show members of the public the benefits of working with wood so I hope you will get involved. We are going to have two or three people there each day working on a variety of projects. There will be experts and amateurs working together, so it should be fun. At the very least, I urge you to come to the Show, see the entries in the different woodwork competitions and say g'day to those of us demonstrating and promoting the Association. The Show starts on Thursday, 14 April and concludes on Wednesday, 27 April.

T&WWWS

The old regular - the Timber and Working with Wood Show - is on from 17-19 June. Phil Lake is again organising the Competition and is looking for entries from Association members. You still have time to finish that project and there is nothing better than a deadline to get a job done! So please consider showing off your work and gaining glory for yourself and your Association.

And don't forget we are having our Parliament House exhibition in September next year!

Phil Greenwood



The proprietors of Australian Woodwork who have outlets in both the Hunter Valley and Darling Harbour have recently approached me with a plea for assistance. I visited the Hunter Valley shop on the weekend of the 26th and 27th of March and spoke with them about their situation..

Australian Woodwork stock larger items of furniture but their bread and butter is the small items such as bowls, boxes and chopping boards. Turned bowls, particularly in burl are popular but the shop is running out of suppliers.

If you have the talent and can supply the good, please contact them on 4990 4994.

The editor.

Last Meeting—David Boucher

David Boucher grew up on an orchard at Stanthorpe in South East Queensland. He left school early and got a job working on the roads driving a backhoe. When he was 21, he decided there must be more to life than digging a hole and filling it again. So he decided to make something. With the help of his wife, Margaret, they made a set of bar stools. He then tried to sell them. That took six weeks. But the experience of making something and then being able to sell it was enough to persuade him to quit his job and start making furniture for a living.

David spoke about the value of maintaining a photographic record of each job, which is so easy these days with digital photography, and having a maker's mark.

Boucher & Co has opened a gallery in Queen St, Woollahra where you can see some of these amazing pieces. You can also see more at his website - <http://www.boucherandco.com>.

Notwithstanding his lack of training, he started making pine furniture. The business flourished and he was able to take on staff and expand premises. And then it all went bad. A timber supplier who was owed a lot of money was taken over and it called in its debts at a time when David and Margaret were not able to make immediate payment. Their business was liquidated. They moved to Dalby 200km north west of Brisbane. David got a job with a company making barbeque furniture. Within six months, that company went bust. However David saw an opportunity and offered to take over the debts of the business in return for the equipment and existing orders. He then went about changing the focus of the business to restoration of furniture. Doing this work taught him a great deal about how different pieces of furniture were made at different times and he was able to expand his knowledge and skills exponentially. But there is only so much furniture to restore in Dalby and after a couple of years they had to look further afield for work.



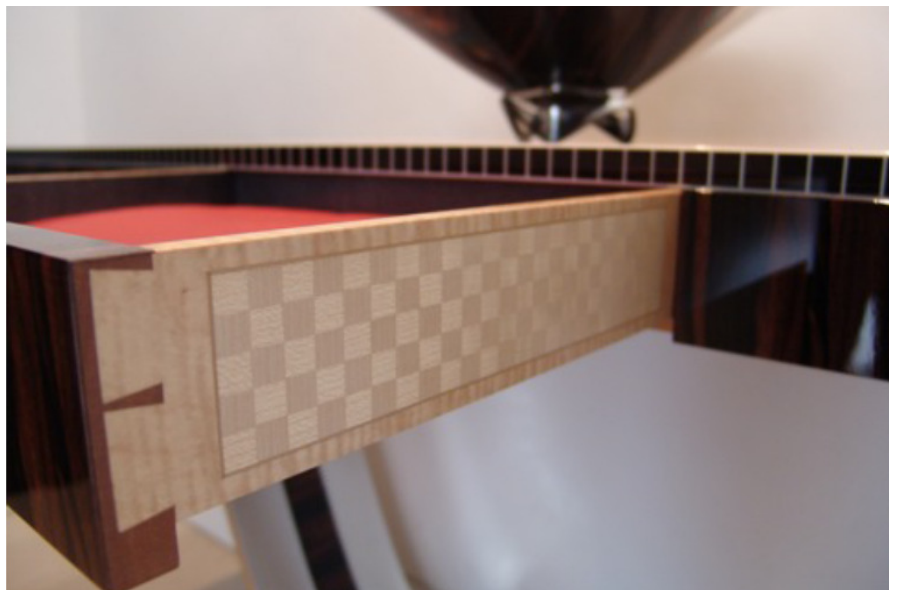
In due course David was asked to make a piece of furniture to order and this was the opening of a new door of opportunity and challenge. And things have grown from there.

He now has a fabulous workshop in Toowoomba and a team of superlative artisans.

David spends most of his time on seeing clients, obtaining commissions and designing unique pieces that will last several lifetimes and bring delight to generations.

He likes to incorporate "wow" factors into each design - things that may not be obvious at first, but when one finds them one is startled and impressed.

Not only is each commissioned piece unique, it is intended to have the best craftsmanship in the world. So there are great challenges for those in the workshop. And all work done on each piece is done meticulously by one person in the workshop - from start to finishing.



David has many international clients and his work is exhibited in museums and galleries around the world.

From Page 1—The Kauri Project – Thirston Morris

For an interview with Thirston, see David Hire's "Brush the Dust Off" on the next page. Meanwhile, here are some images of Thirston's pieces, in particular his novel "woven" chest fashioned from the Kauri tree.



"Asmara" Blanket Chest



Cantilevered Shelves



The Association has been invited to participate with other clubs in demonstrating what we do at the Royal Easter Show.

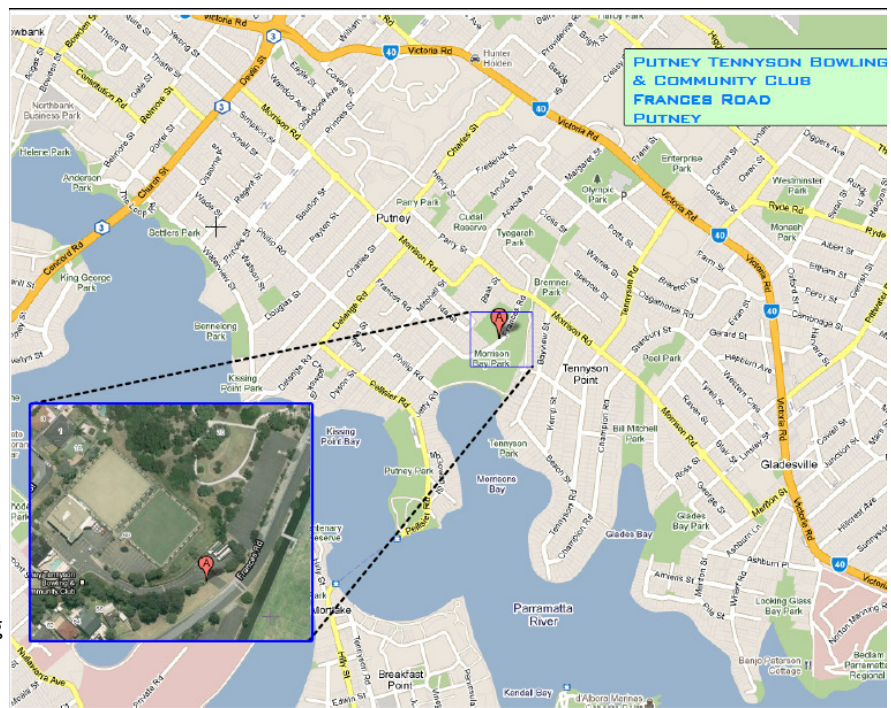
We have been allocated a decent space where we can have a few workbenches and machines so we can do some work whilst people wander past (on the other side of a low barrier).

Our plan is to have 2-3 people there each day from **Thurs, 14 April to Wed 27 April** from 9.30am to 5.30pm.

People can bring something they want to work on, or can assist others with the making of shooting boards, cutting boards, bench hooks and boxes.

People assisting will get a free pass to the Show.

We are also wishing to obtain items made by members that they would like to place on display at the Show.



Brush the Dust Off And find the woody below

Conducted by David Hire

Hello, once again. This month we have a wood worker with international experience. By that I mean he has worked wood in England, South Africa and Australia. Let's meet Mr Thirston Morris.



dh Welcome Thirston. How long have you been in Australia?

tm It will soon be six years.

dh Where did you do your training in woodwork?

tm I started in high school where I had some success. My father is a master carpenter and joiner and I worked with him. In the UK, I studied City and Guilds. I have qualifications as a wood machinist and as a hand crafted cabinet maker.

dh How is woodwork different in South Africa versus England versus Australia?

tm Remarkably similar in the work that I did. South Africa has lost many of the old school woodworkers and their traditional skills. Not a lot of people in South Africa have an appreciation for high end furniture. In the UK, the market is much larger and there is a greater appreciation for fine furniture and the skill involved in producing this work. Since the 1980s there has been a surge in interest in commissioned furniture.

dh What aspect of woodworking is your specialty? turning? marquetry?

tm I don't feel that I have a specialty as I have covered a broad range of work, from first and second fix carpentry through to stair building, commercial kitchen work and fine furniture.

dh Do you have a favourite species of wood you like to use?

tm Blackwood is good and I use it a lot. I like Queensland Walnut but have only ever been able to get enough for a small project. In the UK I used a lot of European and American species, for example, European Oak, Beech, American Black walnut and Canadian rock maple.

A South African timber I like is Kiaat. It is a medium brown and works well.

dh What is your favourite item of woodworking that you like to make?

tm I like to make tables and cabinets but I like commissioned pieces with a challenge. I like working wood when curves are involved. I get myself into trouble sometimes with complex curves.

dh What is your favourite finish?

tm I am still working that out. In the UK, I would send it out to a finisher and there are lots to choose from there. In Australia, I like an oil finish but it takes so long to apply the multiple coats.

In the UK, there's a brushed lacquer but I haven't found it here. I use a lot of pre catalyzed and acid catalyzed lacquer.

dh Is there a particular era of furniture that you like and do you make pieces in that style?

Brush the Dust off - continued.

tm I like contemporary style but done with traditional methods. I like English and French furniture from 17th and 18th century. I use various details from these eras in my furniture.

dh Tell us about your workshop facilities? I believe you have an arrangement with Phil Gould.

tm I have a workshop at home but work mostly from Phil's workshop. It helps to have an extra pair of hands and sometimes two brains are better than one. I have also spent time working with Leon Sadubin at Woodhill.

dh What is likely to be the next power tool you obtain?

tm A large panel saw would be good, but a high volume low pressure (HVLP) spray gun would also be good.

dh And the next hand tool?

tm Nothing I have to have but I like collecting tools so a new Compass plane would be good.

dh What is your favourite thing about woodworking?

tm Designing and implementing and when complete, analyzing what I have achieved or not achieved. Sometimes I get a wonderful surprise.

dh Least favourite?

tm Sanding.

dh What has been your greatest success?

tm The large cabinet with Leon Sadubin. It was made with Jarrah, Australian red cedar and Oliehout or wild olive.

dh Would you like to share a woodworking embarrassment?

tm (A silence descended as tm waved a bandaged little pinkie finger, something about a finisher and stitches).

dh What is your favourite joint?

tm Lapped dovetail.

dh Do you prefer machine power or are you a traditionalist?

tm Both, each has its own place.

dh How can fellow woodworkers contact you?

tm My mobile is 0413 771 905

dh What would you like to tell your fellow woodworkers?

tm I think that woodworking is the most interesting job in the world and I am passionate about it.

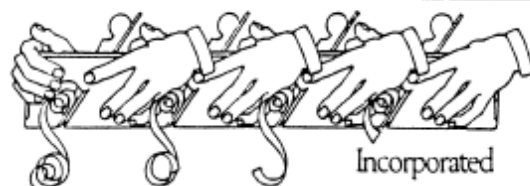
dh Any closing comments?

tm I wish there was greater appreciation for fine woodworking by everyone all around the world.

dh Thirston, thank you for your time and all the best for your woodworking future.

PS. David is looking for more interviewees. If you are interested, drop him a line at dhire@zip.com.au

WOODWORKERS' ASSOCIATION OF N.S.W.



ABN 51 544 261 324

HEALTH & SAFETY POLICY

The Association's Committee has prepared this Health & Safety Policy in the interests of members and guests. The Policy not only applies at the Association's Abbotsford Workshop, but also where applicable at any other venue at which an Association activity is held.

The Committee is concerned with the health and safety of its members and guests, whether they are using woodworking machines and tools at an Association activity or watching others doing so.

A key principle of the Health & Safety Policy is the Committee's expectation that:

- we all have a responsibility for our own safety and that of nearby persons;
- no one will use machines or tools if they do not have relevant experience or, if members with appropriate expertise are not present to provide training and guidance;
- we will all use safety devices e.g. push sticks, when operating woodworking machines; and
- we will all wear or use PPE (personal protection equipment) when operating woodworking machines or when near machines being operated by others.

To help ensure your health and safety and that of others, it is the Association Committee's policy that:

- for insurance reasons, all people who attend the Workshop must on arrival sign the Attendance Register, even if they do not intend using any machines or tools;
- under no circumstances is anyone to operate woodworking machines or power tools at the Workshop unless another person is present;

- the Felder combination machine at the Workshop may only be used by the Workshop Supervisors appointed by the Committee or people authorised by a Supervisor;
- the names of people authorised by a Supervisor to operate the Felder combination machine will be recorded in the Felder Operator's Register;
- members or guests deemed by a Workshop Supervisor to require more training on a particular machine or power tool must undertake such training if requested to do so, before using such machine or power tool;
- if a member or guest is not confident on how to safely use a particular machine or power tool they must consult the relevant user manual or seek guidance from an experienced person;
- to minimise the exposure to airborne dust particles by machine and power tool operators and persons nearby, where applicable, dust extraction equipment must be used;
- any hazard or potential hazard identified by a user of a machine or power tool or a person watching, must be reported to a Workshop Supervisor or a member of the Committee [a hazard is anything, including work practices and procedures, that has the potential to harm the health or safety of a person];
- anyone using a machine or power tool must wear clothing, footwear and hair style appropriate for a woodworking workshop [loose clothing, neckties, open sandals and thongs, jewellery and long loose hair are not appropriate for work in a workshop];
- safe work practices by all using machines and power tools are a must, including wearing PPE, using safety devices such as push sticks, securing work pieces with clamps where appropriate, turning off power and unplugging machines and power tools before making adjustments and not leaving a machine or tool running unattended.

Woodwork is a wonderful profession and hobby but injuries can occur when using woodworking machines and tools. And yes, even experienced woodworkers can be injured, often due to complacency.

DO have regard for your personal safety and that of others.

DON'T use machines and power tools unless you have experience or are firstly shown how to use them.

DO adopt safe work practices at all times and wear PPE.

Whilst not a safety issue, it is a requirement of the Committee that due to the Abbotsford Workshop being adjacent to homes, woodworking machines and power tools may only be operated between 8.30am and 5.00pm Monday to Friday and 10.00am to 4.00pm on weekends and public holidays.

When flood interrupted play.....

When the disastrous floods hit Queensland recently, one of the victims was Association Life Member Richard Vaughan.

As Richard himself put it, he is a BLB (Bloody Lucky Bloke).

The following is an extract from an e-mail sent by Richard.

I am a Bloody Lucky Bloke. Always have been really, but it sure has hit a new marker, rather like the timber moisture gauge on my shed wall.

Talk of love and support is so familiar that until you're the focus of it and feel love and support in full power it is too easy to bleep by what seem just cliches.

Lots of cliches about what comes "out of the woodwork" too, but for sure there are plenty of mates in there. My colleagues in wood are a remarkable community.

I apologise for this being somewhat generic info format but I don't have time to respond individually to so many people - BLB. Retelling what has been done will take time from doing what's needed next. So much to do. Brain feels like a camera on a vantage point recording traffic and simultaneously being in every car.

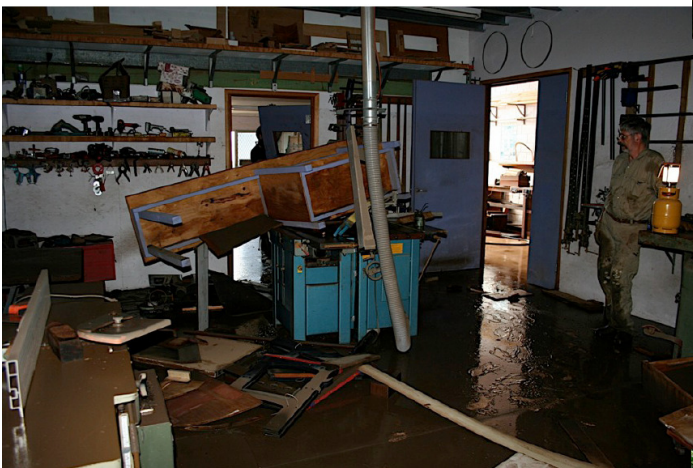
Thursday 13th late arvo was able to get to shedudio via a circuitous

silt. I opened my shed and rolled mine out. That was satisfying.

One speculation as we blasted the filth was how we would greet a person chastising us for misuse of a fire hose. Enema was mentioned.

It was safe walking in an hour or so.

The photo of my benchroom with the bench inverted on top of the Luna in the machine room was my entry image, but all I really noticed



was that the water stopped on the stairs to the office. All books safe. Misinformation was never so welcome. I'd been told it was over the roof. Ahh. It's manageable was my immediate reaction. Enough to distract me from the murky components of the revolving bookshelf commission I'd been working on for the previous several months.

The glass isn't just half full - it simply isn't big enough.

high ground route, almost 2 hours for 28 km on trip meter (just reset with new tank of petrol by coincidence - it sure felt further than that) Water was a receding tide maybe 50 metres down the road from the shed. Neighbour Paul the mechanic lives nearby and was there with sons and using the fire hose to purge the drive of the pratfall slippery



Members' Advertisements



AngleMag Magnetic Saw guide

\$75.00 for members—\$100.00 for non-members

Contact Woodworkers' Association of NSW

Committee members

Wikileaks news - logging in Peru

Fellow member Michael McGrath has alerted us to the following.

Please follow the link below to an important article for all woodworkers who import South American mahogany.

In fact this scenario is repeated around the world for much of the tropical hardwoods used in fine furniture.

Peru admits timber certificates faked in secret cable--3 March

<http://tinyurl.com/illegal-logs>

Opens to:

http://www.survivalinternational.org/news/7061?utm_source=Survival+International&utm_campaign=59fca26e41-E_news_March_2011_3_3_2011&utm_medium=email

Members' Classifieds

Richard Crosland's School of Fine WoodWork

Learn with the master. Richard Crosland's School of Fine Woodwork operates small, hands-on classes for students of all levels. The friendly, creative atmosphere fosters rapid progress and many beautiful pieces are the lasting result



All tools provided and work in progress can be stored at the Alexandria workshop.

Call Richard at the school 93134142

"USER" BEDROCKS-Fettled Stanleys Repairs and Service

Academy HSS irons

G15 Rust Preventative

Trade Prices on:

DMT Diamond Plates

King Waterstones

Jim Davey 4447 8822 (w)

44478790 (ah)

jdavey@bigpond.com



Terry Gleeson

Furniture maker and woodwork teacher

1191 Old Northern Road

Middle Dural, NSW 2158

Phone 02 9651 1012

Fax 02 9651 1341

E-mail

thechairmaker@ozemail.com.au



TERRY GLEESON
Furniture Maker & Woodwork Teacher

Discounts for members

These people generously provide discounts to members of the Woodworkers' Association of NSW. Please support them in return:

Timber

Allwood Cabinet Timbers
Nowra, 4423 3295
www.philipgould.com.au

Anagote Cabinet Timbers
Marrickville, 9556 6444,
10%

Mathews Timber Cabinet Timbers
St Marys, 9833 3100

Warringah Timbers,
Dee Why, 9981 3733

Trend Timbers, Cabinet Timbers
Mulgrave (Windsor), 4577 5277
www.trendtimbers.com.au

Veneercraft

Padstow, 9533 4294
Wood veneers, 10%

Tools and Equipment

CARBATEC Tools and Equipment
David Croaker
Auburn, 9648 6446

F&K Electrics Power tools
Stanmore, 9519 7997, 10% (varies)

Roger Gifkin's Dovetail jig, 10%
www.gifkins.com.au 6567 4313

Total Tools Hand & Power tools
Wetherill Park
www.totaltools.com.au 9203 1950

Hare & Forbes, machinery
Northmead, 9890 9111
www.machineryhouse.com.au

Henry Bros Saws
Vineyard, 9627 5486

Saw blades, knives, cutters (Trade prices)

HNT Gordon, Alstonville,
www.hntgordon.com.au 6628 7222
Classic plane makers, 10%

Major Woodworking Equipment
Padstow, 9708 3233
www.majwood.com.au Ryan, 5%-15%



Finishes

Feast Watson, H/O Scoresby Vic.
www.feastwatson.com.au 1800 252 502

Howard Products, Tamworth
www.howardproducts.com.au 1800 672 646
Orange oil, wood care products

Liberon Enterprises
Fyshwick ACT
www.liberon.com.au 6280 9720
Eric Bray, Finishing materials 25%

The Natural Paint Place
King St, Newtown 9519 0433
www.energyandwatersolutions.com.au

Other

Laminex Industries
Caringbah 132 136, Sheet products

Nover & Co
Eastern Creek, www.nover.com.au 9677 3200
Sheet products, kitchen hardware

Members' Advertisements



AngleMag Magnetic Saw guide

\$75.00 for members—\$100.00 for non-members

Contact Woodworkers' Association of NSW

Committee members

Triton Work Centre and Triton Router Table in good condition and for sale.

Contact Peter Harris or Kim Larymore

Don't forget....

A benefit of fully paid-up membership is free advertising in both this newsletter and the Association website.

Please contact any member of the committee if you have old machinery, tools, surplus wood, a service or anything else of interest to offer.

Members' Classifieds

Richard Crosland's School of Fine WoodWork

Learn with the master. Richard Crosland's School of Fine Woodwork operates small, hands-on classes for students of all levels. The friendly, creative atmosphere fosters rapid progress and many beautiful pieces are the lasting result



All tools provided and work in progress can be stored at the Alexandria workshop.

Call Richard at the school 93134142

"USER" BEDROCKS-Fettled Stanleys Repairs and Service

Academy HSS irons

G15 Rust Preventative

Trade Prices on:

DMT Diamond Plates

King Waterstones



Jim Davey 4447 8822 (w)

44478790 (ah)

jdavey@bigpond.com

Terry Gleeson

Furniture maker and woodwork teacher

1191 Old Northern Road

Middle Dural, NSW 2158

Phone 02 9651 1012

Fax 02 9651 1341

E-mail

thechairmaker@ozemail.com.au



TERRY GLEESON
Furniture Maker & Woodwork Teacher

Big on Performance. Easy on the Budget.

Hammer

The obvious choice!

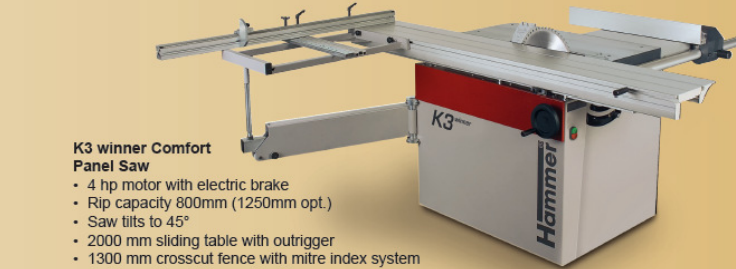
Perfect for applications which require high levels of precision and robust enough to contend with Challenging professional demands.

Time to upgrade to a Hammer



N 4400 Bandsaw

- 4 hp motor with electric brake
- Large wheels (Ø 440 mm)
- Cutting height 275 mm
- Rip capacity 420 mm
- Tilttable
- Can take 6-19mm blade



K3 winner Comfort Panel Saw

- 4 hp motor with electric brake
- Rip capacity 800mm (1250mm opt.)
- Saw tilts to 45°
- 2000 mm sliding table with outrigger
- 1300 mm crosscut fence with mitre index system
- Solid cast iron tables and units
- Professional rip-fence with round bar guide
- Extremely durable
- Options on saw (scorer, dado)



A3 31 Planer Thicknesser

- 4 hp motor
- Remarkably user friendly
- Allows for rapid retooling
- Solid cast iron planer tables
- 3 knife quick-change self-setting cutterblock system
- Quick self setting knives
- 4-230mm thicknessing capacity



C3 31 Combination machine

- 4 hp motors with electric brakes
- 4-speed 30 mm spindle (optional HS router)
- Surface planing width 310 mm
- Max sawblade dia.: 315 mm
- 3 knife quick-change self-setting cutterblock system
- Saw blade tilttable 90°-45°
- Solid cast iron tables and units
- Quick change-over times
- Options (mortiser, mobility kit, scorer, dado)

VIDEO
online

HAMMER,
Quality and precision
from AUSTRIA



FELDER NSW PTY LTD

Unit 1, 125 Russel Street • Emu Plains • NSW 2750
Tel. (02) 4735 1011 • Fax (02) 4735 8222
admin@felder.net.au • www.felder.net.au

www.felder.net.au

**MALENY
WOOD
EXPO 2011**
*from chainsaw
to fine furniture*

www.malenywoodexpo.com.au/woodexpo/

30th April, 1st May, at Maleny Showgrounds



SPECIAL TIMBERS

144 Renwick Street, Marrickville, NSW 2204

Tel (02) 9558 8444

Fax (02) 9558 8044

Anagote@hotmail.com

Monday - Friday – 8am to 4.00pm
Saturday morning – 9am to 11.30am



TIMBER, TOOLS AND MACHINERY SALES.
 Visit our all new purpose built showroom.

NSW distributors of Jet and Powermatic
 woodworking machinery. Over 80 species of
 timber for cabinet & furniture making, joinery,
 boat building, wood carving & turning.



15 Railway Rd North, MULGRAVE 2756

Ph: 02 4577 5277 Fax: 02 4577 6846

Email: sales@trendtimbers.com.au

www.trendtimbers.com.au



**Butcher Block Con-
 ditioner: FOODSAFE**
 guaranteed. Coats
 wood with an anti-
 bacterial blend of
 carnauba wax, food
 grade mineral oil
 and vitamin E. For
 counter tops, bowls
 and chopping
 blocks.



HOWARD Woodcare PRODUCTS
Restor-A-Finish/ Eliminates marks and
 blemishes in furniture finishes
Feed-N-Wax/ Provides a rich easy to
 apply coat of beeswax and carnauba
Orange Oil/ Essential oil for wood it
 polishes, cleans and nourishes finishes.
 Also try **Orange Tung Wood Oil**
 when you desire a non-toxic perma-
 nent coating over dressed wood and
FixStix in wood colours which blends
 with wood grain when filling holes
 and never shrinks or falls out.
www.howardproducts.com.au
1 800 672 646



Offer to Members

CARBA-TEC (NSW) offers the following discounts
 to members, but only on production of their mem-
 bership card at time of purchase:

Machinery – 5% discount.

Merchandise (books, project gear, hand tools, etc
 but excl. Lie-Nielsen, Woodcut) – 5% discount.

Clock movements (excl. grandfather clock move-
 ments) – 5% discount.

Exclusions: Discounts do not apply to stock already
 on special/sale or at reduced prices.

Variations: Conditions to this offer may change at
 manager's discretion.

**CARBA-TEC Australia's Largest Range of
 Tools for Wood.**

Location 113 Station St. Auburn (cnr Adderley St.
 West) – near the M4 Motorway.

Wood at Sturt 2011

Weekly Classes:

Mondays and Tuesdays 6-9pm

Short Courses:

Basic woodwork with Paul Nicholson
2nd & 3rd April 2011

Making joints with Jim Littlefield
18th & 19th June 2011

Power tools for women with Katalin Sallai
13th & 14th August 2011

Hand finishing (Tutor to be confirmed)
22nd & 23rd October 2011

Build a work bench with David Upfill-Brown
7th to 18th November 2011



Winter School 4th - 8th July 2011:

Wood carving with Grant Vaughan
Marquetry with Katalin Sallai

12 Week courses:

9th May - 29th July with James Carr

15th August - 4th November with David Upfill-Brown



STURT
STURT
STURT
STURT
AUSTRALIAN
CONTEMPORARY
CRAFT & DESIGN

Details & enrolment forms on our website

Cnr Range Rd & Waverley Pde
Mittagong NSW

Fax 02 4860 2081 Ph 02 4860 2083

www.sturt.nsw.edu.au

See members' work in

The Members' Gallery

www.woodworkersnsw.org.au

Not all members with web sites are included in the Members' Gallery. If you would like to be included please advise the webmaster

treasurer@woodworkersnsw.org.au

New and returning members

Rick Bartholomew (356) a returning member

John Connors (357)

Stewart Einfeld (358)

If undelivered please return to

PO Box 1016

Bondi Junction

POSTAGE

PAID