

Nov/Dec 2013 Newsletter

Woodworkers Association of NSW

PO Box 1016

Bondi Junction NSW 1355

ABN 51 544 262 364

What members say

Full frontal survey results

The association's committee wants to encourage more members to attend our general meetings. To understand what members want, a survey was carried out to learn how they feel about where and when meetings are held and what happens at the meetings.

So a survey form was devised and posted out to all members. The return rate was 48 per cent – a high rate for this sort of survey.

The first question was to find out whether members wanted to stick with the current one meeting every second month or move up to one meeting a month.

There was a resounding vote for staying with the current system. Only 24 per cent of respondents wanted monthly meeting while 65 per cent wanted to stay with one meeting every two months.

The survey checked to see whether Monday was the preferred night for the general meetings. It was: 57 per cent wanted Mondays with runner-up Tuesday, at 27 per cent. The nights that were definitely not wanted for meetings were Friday, Saturday and Sunday.

Most respondents want the current start time, 61 per cent for starting at "7:00 for 7:30".

And the Putney Bowling Club

was slightly preferred (49 per cent) as a venue over the next most popular, our Abbotsford workshop (45 per cent). Only 33 per cent of respondents wanted to return to the Powerhouse Museum.

Only six per cent suggested other venues or suburbs.

Continues page 5

2014 dates to note

Monday meeting:
Monday 3 February

Newsletter copy deadline
for Jan/Feb 2014 edition:
Friday 3 January

Association Christmas meeting

7 for 7.30pm, Monday 2 December 2013

Abbotsford workshop, at the Western end of Spring Street, Abbotsford

Speaker: A member will do something with a jig but essentially conviviality is the order of proceedings . . .

and, two items for Dutch auction among members

Oak table top: 1,210 x 1,181mm with rounded corners, in 6 pieces of widths 135, 198, 207, 209, 215, 217mm all thickened to 17 mm.

In one lot, or failing that as separate pieces. (Starting bid \$100 at time of print.)

Maple piece: 960 x 233 x 27.2mm

Australian Wood Review

Wood Diary

Event listings in the magazine and website for free. Submit your info 5-6 weeks before the magazine goes on sale.

Doctor Wood

AWR runs a question column. Send your woodworking question or problem to . . . doctorwood@woodreview.com.au . . . and they'll hunt round for the answer.

Stories

Tell them your story. And tell them what stories you'd like to read in the magazine (or if you'd like to write for them.)

Contact Linda Nathan, Editor

Australian Wood Review

Published by

Interwood Holdings P/L

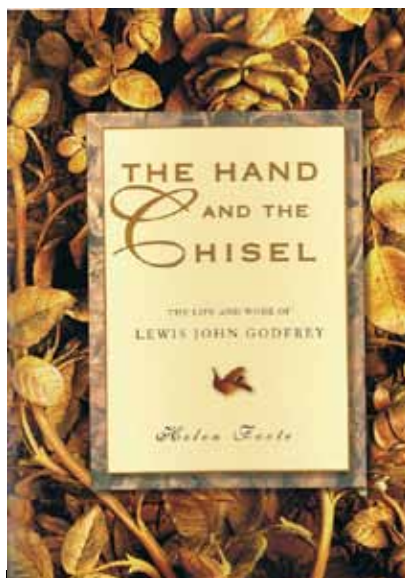
P 07 3806 2288

F 07 3806 2277

woodreview.com.au

PO Box 4336

Loganholme DC Qld 4129



WWA members: \$29.95*

Regular price: \$34.95

** (+ free postage in Australia)*

A biography of an exceptional craftsman from the elite trade of carving, who rendered in wood and stone with grace and perfection, from tiny wooden carvings to the ornate facades of public buildings and churches, all executed with perfect precision.

This colour illustrated record of Godfrey's known (Australian and NZ) work is a revealing and long-overdue tribute to his incredible talent.

The author, Helen Foote, is Lewis John Godfrey's great-granddaughter. Before Helen began the book, the little she knew about him was that, in his day, he was a carver of some repute. What began as a casual enquiry became a quest, as Helen discovered more and more impressive works by Godfrey in Australia and New Zealand.

Published by

Melbourne Publishing Group Pty Ltd

(A4 pbback with French flaps, 76 pp)

TO ORDER

m.mumford@melbournepublishing.com

or

F: 03 5629 9043

P: 0408 343 992

www.melbournepublishing.com

Free timber brochures from Boral

Members may be interested in brochures about timber distributed by Boral Limited.

They're mostly on flooring and decking but the *Species Quick Reference Guide* lists 19 hardwood species with technical information on qualities including hardness, density, strength, fire ratings and susceptibility to termites and borers.

At www.boral.com.au/ click on "Brochures" then "Timber" for a list of PDF files (and/or link to request printed copies)

Gallery Lane Cove

exhibition announced

Open to all association members

1 to 13 September 2014

Managing committee

Phil Lake

John Gallagher

Stuart Faulkner

Richard Crosland

Peter Dunn

Brian Dawson

Alex Springall

Miko Nakamura

Regular updates posted to the website, on the calendar page.

Square Drive Screws

Heard They're Good? Try Them!

- High Quality
- Easier Driving
- Better Control
- Longer Life
- Heat Treated Steel
- Small Body Diameter
- Sharp Point

Wide Range of Sizes

Introductory Pack

500, #8 and 10 Gauge screws with driver included

\$46.00 inc. post

SCREW-IT-SCREWS

BUY ON-LINE AND SAVE!

www.screwitscrews.com.au



The the inimitable Terry and visiting association members October 2013

A visit to see Terry

A 15-strong group of woodies turned up at Terry Gleeson's workshop on Sunday 27 October: a beautiful sunny day. We had a great time being shown around by the inimitable Terry and members had a very interesting and entertaining day: we thank Terry for his time and effort in making it a great success and Miko, our chief organiser, for making it all happen.

Terry lives adjacent to his large and rambling workshop in Mid Dural. The workshop used to be the compost shed for a mushroom farm which Terry and his three brothers bought way back in the late 70s.

Terry did a cabinetmaker apprenticeship and has been a woodworker all his life.

And it shows in the way he effortlessly and with great skill, manipulated the machines and tools in his workshop. He now spends almost all of his time teaching.

Currently, he has 38 students whom he sees in small groups at various times during the week.

He took us around many of his machines, demonstrating what each can do, how to operate it safely and, probably more importantly, what not to do.

Starting with the table saw, Terry demonstrated the use of sleds as an accurate and safe way to cut. He then showed us his band saws, a large panel saw, a stroke sander, a thicknesser and a planer. At each machine, his

demonstration was clear and his tips invaluable: safely cutting thin strips on the panel saw without endangering fingers: e.g., cut one half, then quickly lift the wood off the blade, and cut the other half – simple!

He showed us how to use the planer (put downward pressure on the out-table, only horizontal push on the feed-table), how to thickness correctly (support the piece on entry and on exit

... more next page



to eliminate snipe) and how to use the planer to rebate. He has installed a spiral tungsten carbide planning head and reckons it has 10 times the life of the traditional three blades. (Another item for my wish list!)

Terry is a font of knowledge, experience and of tales of acquisition. He bought his panel saw from Royal Adelaide Hospital by offering the asking price, as long as it included delivery. He had his eye on a huge bandsaw for a year before the seller finally said "If it's for you, you can have it for \$1,000".

After the visit, we all enjoyed a sausage sizzle set on Terry's verandah, before inspecting new member Scott Nieass' immaculate Ford model A. Scott has spent six years rebuilding this car, which has a stunning "brake" body of coachwood.

Chief cooks were Steve Townsend and John Connors.

Brian Dawson



Scott Nieass' Ford model A

**For a site visit to your workshop
contact a committee member**
Contact details on the back page

Terry's workshop visit cont . . .



"Downward pressure on the out-table, horizontal push on the feed-table"





WOODIES LOVE US, THIS WE KNOW

Feed-N-Wax Penetrates and feeds dry wood leaving a superior natural wax finish.

Orange Oil This was the first orange oil ever made for polishing and sealing wood and it remains by far the best product of its type available.

HOWARD Restore-A-Finish
Remove heat rings and scratches from furniture finishes instantly and permanently.

HOWARD PRODUCTS
1800 672 646
www.howardproducts.com.au

Now you can buy ONLINE straight from our website

E

S

C

A

TWELVE WEEK MASTERCLASS

with
Brian Reid (USA),
David Upfill-Brown (Australia and USA)
Neil Erasmus (Australia)

13TH MAY TO 2ND AUGUST 2013

ERASMUS
school of creative arts

PHONE 08 9293 7171 or 0409 107 292
EMAIL erasmus@erasmusdesigns.com
WEB www.erasmusdesigns.com

- Climate controlled teaching studio
- Forest setting in Perth Hills
- Professionally equipped
- Accommodation available for interstate/overseas students

Summary of results

	Responses
Preferred frequency	
monthly meetings	24%
2-monthly meetings	65%
Preferred night	
Mon	57%
Tue	27%
Wed	20%
Thur	24%
Fri	10%
Sat	4%
Sun	6%
definitely not Mon	10%
definitely not Tue	18%
definitely not Wed	22%
definitely not Thur	16%
definitely not Fri	37%
definitely not Sat	51%
definitely not Sun	51%
Preferred start time	
6-6:30	14%
6:30-7	22%
7-7:30	61%
7:30-8	10%
Preferred place	
Abbotsford workshop	45%
Powerhouse Museum	33%
Putney Bowling Club	49%
Other	6%
Preferred activity	Average
Expert speaker	4.2
Show&tell	3.4
Demo tools, techniques	3.8
Watch woodworking DVDs	2.0
Dinner+ snacks	1.4
Light supper only	2.9

The last section, on activities at general meetings, showed the favourite activity was having an expert speaker (average 4.2 out of 5). Next was demonstrations of tools and techniques (3.8 out of 5), then show and tell (3.4 out of 5). The average score for the option of watching woodworking videos or slideshows scored only 2.0 out of 5.

The question on refreshments was not well designed since the options (dinner, snacks or light supper) were not clearly defined. However, the results show fairly clearly that we should keep the food and drinks simple, a light supper or just snacks and drinks.

The committee would like to thank all the members who responded to the survey and to the members who made many other useful suggestions.

Steve Townsend

Crateing 2013

More information

vwa.org.au/exhibitions/
create-crate
facebook.com/createfromacrate
wasteconverters.com.au/
RecyclingCompetition

Further enquiries

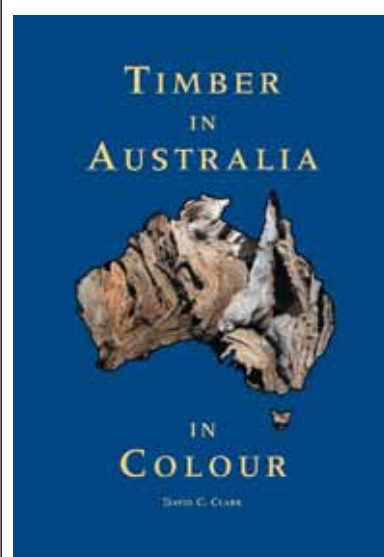
Ward Petherbridge
Managing Director
Waste Converters Recycling P/L
185 Westernport Highway
Dandenong South 3175
03 9799 1935
0418 350 551
ward@wasteconverters.com.au

Show your work in the newsletter
Email the editor photos and a few words about the item (or items) to
jhn@bigpond.com



Agents for **Hegner** German light machines, **Stubai** Austrian bench and carving chisels, **Gyokuchō** Japanese saws, **Marples** British layout tools, **Renaissance** British Museum Standard wax, **Joint Genie** British doweling jigs, **Brusso** American box and cabinet brassware **White Crocodile** German polishing brushes and hundreds of other quality tools, equipment items, book and video titles.

PO Box 1229 Mona Vale NSW 1660
Ph: (02) 9979 7797 Fax: (02) 9979 8062
www.thewoodworks.com.au
info@thewoodworks.com.au



by David C Clark - \$35

The first full length, illustrated study of timbers available in Australia

- 540 different timbers listed
- 560 full colour illustrations
- comprehensive introduction to timber as a material
- common and botanical name index
- specific information sections on eucalypts, Australian oaks and wattles
- technical notes on each timber: where it grows, mechanical and working properties, colour, texture and grain and uses

www.palmerhiggsbooks.com.au



Your very own precision dovetail saw

Association member, Paul Nicholson will be running a five-day course in making a dovetail saw. The course will be held in Sydney, at Splinter Workshop in St Peters, in January 2014 and students will make their own dovetail saw entirely from scratch.

This is a course Paul has been conducting each year at the Sturt Craft Centre, Mittagong. The January course will be the first time it's been offered in Sydney.

Paul is a renowned expert at dovetails and his dovetail saws are specially constructed for the most accurate pin and tail cuts possible.

The 220 mm-long blade is constructed from 1095 spring steel and has a heavy brass spine to provide weight and stiffness.

The blade is 0.4 mm thick and the steel has been hardened to Rockwell 48-52. The handle is shaped so it fits each student's hand perfectly.

The teeth are individually filed and sharpened with a needle file. There are 24 teeth to the inch.

Most dovetail saws on the market have 15 to 20 teeth per

inch but Paul says there are great benefits in having 24: "With 24 tpi you are able to start the cut more accurately and have better control," he says.

"A coarser saw is able to cut more quickly but when cutting a dovetail the difference in speed is only a few seconds – if that.

Balance that against the greater accuracy and control, and the finer saw wins hands down." Unlike coarser saws, the Nicholson saw doesn't have the teeth set. Each tooth is filed from alternate sides so the filing burr provides

More next page . . .



the 'set'. This means you get a much narrower kerf – around half a millimetre. The teeth also have a lot of negative rake, again allowing easy starts to cutting.

The blade is assembled by sandwiching the steel between two flat brass bars and hand-riveting them together.

The handle is roughly cut out on a bandsaw from a range of selected highly figure timbers. Some students bring their own special timbers.

The handles are then shaped with a series of hand-cut rasps and precisely drilled in a jig and fitted to the blade using brass spit-nut saw screws.

"It is a demanding course that requires perseverance and attention to fine detail," says Paul, "but the reward is a beautiful

precision saw that will give the user a new level of accuracy in cutting dovetails."

Paul's approach to furniture making is traditional with a strong emphasis on hand-tool skills.

Desks and cabinetry with fine dovetailed drawers and secret compartments are a specialty.

He teaches traditional woodwork at the Splinter Workshop.

"I feel strongly about keeping the traditional skills and techniques alive. Teaching is an opportunity to contribute to this goal," Paul says.

"People who make their own saw feel a special sense of achievement when every dovetail they cut is done with a saw they created themselves."

The course costs \$750 including materials and runs from Monday 13 to Friday 17 January. Six places available. For more information, contact Paul Nicholson on 0430 032 767 or email at paulnicholson.furniture@gmail.com

Steve Townsend



CARBA-TEC
TOOLS FOR WOOD

Voucher
***10% off**
1 purchase instore
Ad must be presented to claim offer.
Valid until 31st December 2013

Get the latest Catalogue FREE!
View the latest catalogue online or download your own!
www.carbatec.com.au

Check out our full range of products online at
www.carbatec.com.au

Order Toll Free: 1800 658 111
Visit us at: 113 Station Rd, Auburn NSW

* Offer excludes Festool & can't be used in conjunction with any other offer.

WOODWORK CLASSES

STUART FAULKNER & PAUL NICHOLSON

WE PROVIDE:

- tuition for all levels
- a 4:1 student to teacher ratio within a dynamic group setting
- day, evening, weekend term classes, specialist workshops and short courses
- a safe working environment and individual safety training
- a well maintained and fully equipped machine room
- a comprehensive selection of dedicated finely tuned quality student hand tools

MORE INFORMATION

www.splinterworkshop.com.au – Woodwork Classes

Stuart: 0419 690 757 Paul: 0430 032 767

MEMBERS OF WOODWORKERS' ASSOCIATION OF NSW



SYDNEY SCHOOL FOR WOOD



TREND TIMBERS
SPECIALISTS IN FINE WOODS

TIMBER, TOOLS AND MACHINERY SALES.
Visit our all new purpose built showroom.

NSW distributors of Jet and Powermatic
woodworking machinery. Over 80 species of
timber for cabinet & furniture making, joinery,
boat building, wood carving & turning.



15 Railway Rd North, MULGRAVE 2756

Ph: 02 4577 5277 Fax: 02 4577 6846

Email: sales@trendtimbers.com.au

www.trendtimbers.com.au

The Sydney Woodcarving Group

The SWG meets regularly at four locations, where our members
share their expertise and ideas. Beginners are welcome – tools
and timber supplied for learning projects.

Groups meet at:

Southside (Lilli Pilli): First Saturday of the month
and one weekday evening

Epping: Second and forth Wednesday of the month

Chester Hill: Second Saturday of the month

Shellharbour: First Monday and third Saturday of the month.

For more information and location details, phone

Rosemary Mackie on 0419 607 489 or visit

www.sydneywoodcarving.org.au



ANAGOTE

Quality timber stockists

144 Renwick Street
Marrickville, NSW 2204
P: 02 9558 8444, F: 02 9558 8044
anagote@hotmail.com
Monday to Friday: 8am - 4pm
Saturday: 9 - 11:30am

Liberon Products Australia Pty Ltd



Liberon products have been
known around the world since
the early 1900's initially
created in France. They have
an enviable reputation for
high quality restoration and
the finishing of wooden
furniture and antiques.

We were known previously in
Australia as Liberon
Enterprises, but with a new
owner and new name, we are
no longer at Fyshwick
in the ACT.

For a full colour catalogue,
email Carol at address as
below.

Woodworkers' NSW members
received our products at
wholesale prices,
plus postage/freight.

PO Box 306, Eumundi QLD
4562

P 07 5471 1028

carol@liberon.com.au

www.liberon.com.au

Hammer®

Perfect woodworking.

Big on Performance. Easy on the Budget.

Perfect for applications which require high levels of precision and robust enough to contend with challenging professional demands.

Amazing Specials

N3800 Bandsaw

- Large wheels (Ø 380 mm)
- Cutting height 310 mm
- Rip capacity 360 mm
- Tilttable table

now only 1,819.00
\$ excl.GST



FELDER-GROUP AUSTRALIA

NSW Emu Plains, Email: admin@felder.net.au
WA Malaga, Email: sales@krengineering.com.au
QLD Darra, Email: info@felderqld.com.au
VIC Melbourne, Email: info@feldervic.com.au

www.hammer-australia.com

Immediate-Info:

NSW (02) 4735 1011
WA (08) 9209 3055
QLD (07) 5543 5599
VIC (03) 9018 8346



A3 26 Planer Thicknesser

- Remarkably user friendly
- Allows for rapid retooling
- Solid cast iron planer tables
- 3 knife quick-change self-setting cutterblock system

now only 3,221.00 \$ excl.GST



Silent POWER

Spiral blade cutterblock = Pulling cut*
Extremely quiet, noise is reduced by half.
Usable blade life twenty times longer than standard blades.



Video online



C3 31 Combination machine

- Surface planing width 310 mm
- 3 knife quick-change self-setting cutterblock system
- Saw blade tilttable 90°-45°
- Solid cast iron tables and units
- Quick change-over times

now only 9,282.00 \$ excl.GST



K3 basic Panel Saw

- Solid cast iron tables and units
- Aluminium rip-fence with profile bar guide
- Extremely durable

now only 4,734.00 \$ excl.GST

* Optional: all planer/thicknessers are also available with the new Silent-POWER spiral knife cutterblock. Prices valid till 30th November or while stocks last

Association member discounts

- Allwood Cabinet Timbers, Nowra, 4423 3295 www.philipgould.com.au
- Anagote Timbers, Marrickville, 9556 6444 (10% discount)
- Feast Watson, H/O Scoresby Vic. 1800 252 502 www.feastwatson.com.au
- F&K Electrics Power tools, Stanmore, 9519 7997 (10% discount - varies)
- Henry Bros Saws, Vineyard, Saw blades, knives, cutters, 9627 5486 (trade prices)
- Howard Products, Tamworth, orange oil, wood care products, 1800 672 646
www.howardproducts.com.au
- HNT Gordon, Alstonville, classic plane makers, 6628 7222 www.hntgordon.com.au
(10% discount)
- Laminex Industries, Caringbah, NSW, sheet products, 132 136
- Liberon Products Australia Pty Ltd, Eunundi, SE Queensland, 07 5471 1028 carol@liberon.com.au
www.liberon.com.au (wholesale prices)
- Major Woodworking Equipment, Padstow, 9708 3233 www.majwood.com.au
contact Ryan, (5-15% discount)
- Mathews Timbers, St Marys, 9833 3100
- The Natural Paint Place, King Street, Newtown, 9519 0433
www.energyandwatersolutions.com.au
- Nover & Co, Eastern Creek, NSW, sheet products, kitchen hardware, 9677 3200
www.nover.com.au
- Roger Gifkin's Dovetail Jig, 6651 9513, www.gifkins.com.au (10% discount)
- Trend Timbers, Mulgrave/Windsor, 4577 5277 www.trendtimbers.com.au
- Veneercraft, Padstow, wood veneers, 9533 4294 (10% discount)
- Warringah Timbers, Dee Why, 9981 3733

**Please contact the editor if your listing is no longer current
or needs amending. jhn@bigpond.com**

Remaining 2013 deadline dates: 2 September, 4 November

NSW WWA member ads

- 1955 Wadkin 300mm planer 3Hp
- Invicta Delta 400mm thicknesser 7.5Hp,
- 1942 Wadkin 30in bandsaw (wheels newly rubbered, new bearings top and bottom)
- 1959 Ross 17cfm compressor plus regulator, fittings, hoses and a 2-quart pressure pot spray gun.

All 3-phase motors and all in great condition (albeit not very pretty). I have instruction manuals for the jointer, thicknesser and bandsaw.

I also have some very nice highly figured yellow box approx 1 cubic metre, and quite a lot of shorts of river red gum, plus other bits and pieces. Make an offer I can't refuse.
nicholashill@ozemail.com.au
 or call 02 9997 8788

• AngleMag saw guide

\$75 for members

\$100 for non-members

Contact Peter Harris
 or Kim Larymore
 (see last page for contact details)



Terry Gleeson
maker of
Fine Furniture



• Terry Gleeson's
School of Woodwork
 1191 Old Nothern Road
 Middle Dural NSW 2158
P: 02 9651 1012
F: 02 9651 1341
thechairmaker@optusnet.com.au



• Richard Crosland's **School of Fine Woodworking**

Learn with the master Richard Crosland's school provides small, hands-on classes for students of all levels. The friendly, creative atmosphere fosters progress and many beautiful pieces are the lasting result.

All tools are provided and work in progress can be stored at the Alexandria workshop.

Call Richard at the school
02 9313 4142, or visit
www.crosland.com.au



• Tormek 1002 SuperGrind tool sharpening system

Early model Tormek without internal motor (a drill drives the wheel). In as-new condition with tool attachment. Wheel is 250mm x50mm SuperGrind stone (RRP around \$300 on its own). Suits all current Tormek accessories and comes with drill as shown for \$250 (or best offer).

Contact Michael McGrath
02 9949 6683, or
accent@swiftdsl.com.au



• Jim Davey's User **Bedrocks-fettled Stanleys**

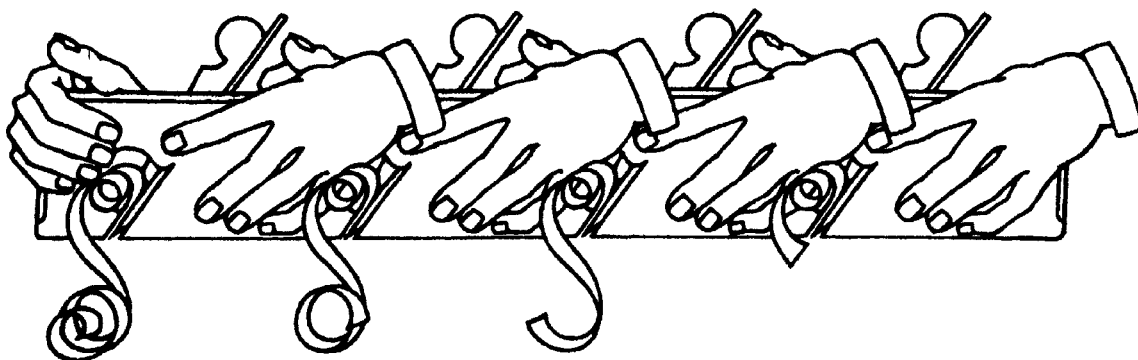
Repairs and Service

Academy HSS irons
 G15 Rust Preventative

Trade prices on:
 DMT diamond plates
 and King waterstones
4447 8822 (bh)
4447 8790 (ah)
jdavey@bigpond.com

For new listings, or to update an existing listing, contact the editor
jhn@bigpond.com

Remaining 2013 deadline dates: 2 September, 4 November



Association Committee contact information

Committee members

Chair: vacant

Vice Chair: Steve Townsend • 0411 477 075 • steve@ibis4.com

Secretary/Public Officer: Phil Lake • 0403 114 712 • secretary@woodworkersnsw.org.au

Treasurer: Miko Nakamura • 02 9805 1775 • treasurer@woodworkersnsw.org.au

General committee members

John Connors • 02 9818 4728 • connorsjohn@icloud.com

Brian Dawson • 02 9880 7646 • 0418 212 496 • brian@valuesystems.com.au

Frank Duff • 02 9896 4017 • 0403 821 389 • fwduff@optusnet.com.au

Peter Dunn • 02 02 4344 7806 • 0410 411 951 • bentneck@bigpond.com

Peter Harris • 02 9879 3329 • peterh47@ihug.com.au

Currently assisting the committee

Membership Secretary: Peter Hunt • 0418 867 870 • p_j_hunt@msn.com.au

Newsletter/Website: Jo Healy-North • 0417 667 367 • jhn@bigpond.com

Life members

Richard Crosland, Phil Lake, Kim Larymore, Leon Sadubin, Richard Vaughan, Alan Wale

New members update

Phillip Bohringer, Dominic Ullio, Kath Jennery

If you'd like to join the committee or be more involved in the association, call a member!

If undelivered please return to PO Box 1016 Bondi Junction NSW 1355

POSTAGE
PAID