

## Sep/Oct 2013 Newsletter

Woodworkers Association of NSW

PO Box 1016

Bondi Junction NSW 1355

ABN 51 544 262 364



*CH001 Chair: Plantation Grown Tasmanian Oak, H: 850mm, Foot print: 470mm. This Australian made chair is part of the newly opened refurbished Burton Street Tabernacle in Darlinhurst, Sydney. Always great to see the work of local makers being used in high profile projects! For more info, visit [www.xilo.net.au](http://www.xilo.net.au)*

## Next meeting of the association

**7 for 7.30pm, Monday 30 September 2013**

Putney Tennyson Bowling & Community Club, Frances Road, Putney, NSW

### **Speaker: Ross Easton, from the Woodwork Forums**

The online Woodwork Forums is a most useful information resource available to all woodworkers. It gives you access to hundreds of thousands of items contributed by thousands of woodworkers. And it gives you the power to rapidly search for exactly what you want. Plus, there are social events, buying groups to get the lowest prices and special interest groups (boats, musical instruments, etc). They even have forums for particular brands like Festool, Triton, GMC.

It's Australian and it's free! Go to it and you can quickly find out where you can get rare species of timber, what make of router table will best suit your needs, who has spare parts for old machinery the experience of others with finishes on difficult woods.

Ross Easton is a long time member and user. He is coming along to show us how easy it is to use the Woodwork Forums and how it can make you a better, happier woodworker.

## Member info

### *Australian Wood Review* offers:

#### **Wood Diary**

Event listings in the magazine and website for free. Submit your info 5-6 weeks before the magazine goes on sale.

#### **Doctor Wood**

AWR runs a question column. Send your woodworking question or problem to . . .  
doctorwood@  
woodreview.com.au  
. . . and they'll hunt round for the answer.

#### **Stories**

Tell them your story.  
And tell them what stories you'd like to read in the magazine (or if you'd like to write for them.)

#### **Contact Linda Nathan, Editor**

*Australian Wood Review*

Published by  
Interwood Holdings P/L  
P 07 3806 2288  
F 07 3806 2277  
woodreview.com.au  
PO Box 4336  
Loganholme DC Qld 4129



## Woollahra Small Sculpture Exhibition

26 October - 10 November 2013, Woollahra Council

Chambers, 536 New South Head Road, Double Bay

Prize to be announced 25 October

The Woollahra Small Sculpture Prize exhibition includes works from across Australia and overseas and requires artists to present an original, freestanding sculpture up to 80 cm in any dimension.

The 2013 finalists were selected by guest judges Nick Mitzevich, Director of the Art Gallery of South Australia and Professor Ian Howard from the College of Fine Arts at the University of New South Wales.

NSW Woodworkers Association Members are invited to tour the exhibition. Guided tours are free and available by prior arrangement.

#### **For more information**

E: [sculpture@woollahra.nsw.gov.au](mailto:sculpture@woollahra.nsw.gov.au)

P: 02 9391 7135

[www.sculptureprize.woollahra.nsw.gov.au](http://www.sculptureprize.woollahra.nsw.gov.au)

**Square Drive Screws**

**Heard They're Good?  
Try Them!**



- High Quality
- Easier Driving
- Better Control
- Longer Life
- Heat Treated Steel
- Small Body Diameter
- Sharp Point

**Wide Range of Sizes**

**Introductory Pack**  
500, #8 and 10 Gauge screws  
with driver included  
**\$46.00 inc. post**

**SCREW-IT-SCREWS**

**BUY ON-LINE AND SAVE!**  
[www.screwitcrews.com.au](http://www.screwitcrews.com.au)

## To update or change

your advertisement, or to submit new artwork,  
simply email [jhn@bigpond.com](mailto:jhn@bigpond.com)

**2013 Newsletter deadlines:**  
**4 November**

**Newsletter columns:**  
**1 col - 5.4 cm // 2 col: 11.2 cm // 3 col: 17 cm**

**Submit content as text (in Word)**

**Submit images as jpegs, min 210 dpi**  
To contact the editor, email [jhn@bigpond.com](mailto:jhn@bigpond.com)

<b>Dates</b>	<b>Course</b>	<b>Tutor</b>	<b>Level</b>	<b>Cost+materials</b>
Aug – Sept	<b>4 week Woodwork</b> 1 day Easy Start course for absolute beginners: 11am - 4pm	<b>Roy Schack</b>	Beginners	\$TBC
Thurs 5 Sept	<b>Intro to wood</b>	<b>Daryl Ingate</b>	Total beginners	\$58
7-8 Sept	Project planning	Daryl Ingate	All	\$290+
7-8 Sept	Wood for Women II	Phoebe Everill	Intermediate	\$290+
30 Sept - 1 Nov	Design & make a chair	David Upfill-Brown	Int – Adv	\$3,000+
19-20 Oct	Tool making	Daryl Ingate	All	\$290+

## ***The Hand and the Chisel***

A biography of an exceptional craftsman from the elite trade of carving, who rendered in wood and stone with grace and perfection, from tiny wooden carvings to the ornate facades of public buildings and churches, all executed with perfect precision.

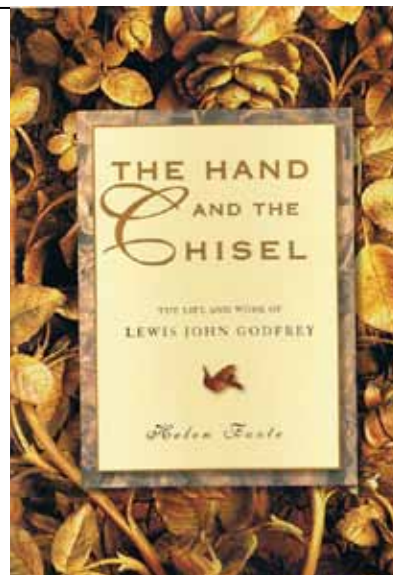
This colour illustrated record of Godfrey's known (Australian and NZ) work is a revealing and long-overdue tribute to his incredible talent.

The author, Helen Foote, is Lewis John Godfrey's great-grand-daughter. Before Helen began the book, the little she knew about him was that, in his day, he was a carver of some repute. What began as a casual enquiry became a quest, as Helen discovered more and more impressive works by Godfrey in Australia and New Zealand.

*Published by Melbourne Publishing Group Pty Ltd  
(A4 paperback with French flaps, 76 pp)*

### **TO ORDER**

Email: [m.mumford@melbournepublishing.com](mailto:m.mumford@melbournepublishing.com)  
 Or: Fax 03 5629 9043 | Phone 0408 343 992 | [www.melbournepublishing.com](http://www.melbournepublishing.com)



**WWA members: \$29.95\***

*Regular price: \$34.95*

*\* (+ free postage in Australia)*

## **We need your photos**

The committee has decided to add a long-overdue gallery section to the association's website. We want to showcase the amazing accomplishments of our members. Please send in photos of your best pieces with information about the materials, tools and techniques used in making the piece.

Any particular problems that had to be overcome are always of interest.

Photos should be of top quality with good lighting and a plain background to best show your work. Photos in digital format should be emailed to committee member

**Steve Townsend at [steve@ibis4.com](mailto:steve@ibis4.com)**

# Chiswell Furniture in Australia

Joseph Chiswell and his brother Richard had a home based workshop in Chingford, Essex, where their sons, the founders of Chiswell Furniture in Australia, were born, raised and trained. Their letterhead, c1900, states that the business, which specialised in antique chair and cabinet reproductions, had been established for over 200 years. One of Joseph's sons, Charles a wood-carver, decided to emigrate to Sydney bringing with him samples and photographs of their furniture-making skills.

At that time there was no capability in Australia of reproducing the great English furniture styles to their original quality. When shown Charles' samples, the Grace Bros furniture buyer at that time, Mr Ern Graham, had no hesitation in guaranteeing to buy their entire first year's production if the family was to relocate to Sydney. So Chiswell Bros began

in Sydney on 20 June 1920 in converted stables in Glebe with a verbal agreement among the partners: sons of Joseph Arthur (Brewer), wood carver and furniture historian Ernest (Ern), chair maker Charles (Charlie), wood carver James (Jim), designer, draughtsman, wood machinist and cabinetmaker, son of Richard, Richard (Dick), cabinetmaker.

By 1922, having quickly outgrown the Glebe premises, a



*Furniture made for the 1928 Catholic eucharist congress*

move was made to 583 Princes Highway (then Rocky Point Road) Rockdale. Timber and veneer supplies of 'Spanish' (from Cuba) mahogany and English oak had to be indented from London. By 1925 the partnership had also outgrown this factory site, a much larger adjacent site was purchased fronting Subway Road (then un-named), with rear access from Keats Avenue. Two bays of a new brick factory of 'saw tooth' roof design were erected with an adjoining fibro building for polishing and upholstering. A significant contract for furniture for the Roman Catholic Eucharistic Congress at the Sydney Showground in 1928 was commissioned by Grace Bros and executed by Chiswell

... more next page

## "Crateing" Exhibition 2013

### Create from a Crate

An exhibition of finished pieces  
October - November 2013  
at a Melbourne and  
regional Victorian Gallery - TBA

### More information

[vwa.org.au/exhibitions/create-crate](http://vwa.org.au/exhibitions/create-crate)  
[facebook.com/createfromacrate](https://facebook.com/createfromacrate)  
[wasteconverters.com.au/RecyclingCompetition](http://wasteconverters.com.au/RecyclingCompetition)

### Further enquiries

Ward Petherbridge  
Managing Director  
Waste Converters Recycling P/L  
185 Westernport Highway  
Dandenong South 3175  
03 9799 1935  
0418 350 551  
[ward@wasteconverters.com.au](mailto:ward@wasteconverters.com.au)



**WOODIES LOVE US, THIS WE KNOW**

**Feed-N-Wax** Penetrates and feeds dry wood leaving a superior natural wax finish.

**Orange Oil** This was the first orange oil ever made for polishing and sealing wood and it remains by far the best product of its type available.

**HOWARD Restore-A-Finish**  
Remove heat rings and scratches from furniture finishes instantly and permanently.

**HOWARD PRODUCTS**  
**1800 672 646**  
[www.howardproducts.com.au](http://www.howardproducts.com.au)

Now you can buy ONLINE straight from our website

**ERASMUS**  
school of creative arts

**TWELVE WEEK MASTERCLASS**

with  
**Brian Reid (USA),**  
**David Uphill-Brown (Australia and USA)**  
**Neil Erasmus (Australia)**

**13<sup>TH</sup> MAY TO 2<sup>ND</sup> AUGUST 2013**

- Climate controlled teaching studio
- Forest setting in Perth Hills
- Professionally equipped
- Accommodation available for interstate/overseas students



PHONE 08 9293 7171 or 0409 107 292  
EMAIL [erasmus@erasmusdesigns.com](mailto:erasmus@erasmusdesigns.com)  
WEB [www.erasmusdesigns.com](http://www.erasmusdesigns.com)



Bros and Edward Hill. Chiswell Bros made the table and high chairs, sideboard and serving tables. Specifications for the supplied items were:

- 'Elizabethan' period oak dining table 18ft x 5ft
- Set of 20 'Charles II' period oak side chairs
- Pair of 'Charles II' period oak arm chairs
- Pair of 'Elizabethan' style oak serving tables 5ft long
- 'Elizabethan' style oak side board 9ft long.

All pieces were heavily carved, a feature of these periods.

After the Congress, the settings were transferred to the boardroom of Lewisham Hospital, where they remained until their auction in 1992. The boardroom setting was used in the ABC-TV mini series, 'Brides of Christ'. Similar contracts were carried out for the foyers of the Capitol and State theatres and boardroom for Liberty Silks, then in the Grace Building in York Street Sydney, where Chiswell also executed the room panelling and a large carved, double-sided shingle. By 1929, two more brick bays were added to the Chiswell factory, plus an incinerator, permanent office accommodation and covered delivery dock. The agreement between the five partners was formalised in 1930 under the trading name of Chiswell Brothers.

High class reproduction furniture, including chairs, sideboards, tables, occasional, bedroom and lounge furniture continued to be made to order, often from detailed sketches provided by trained furniture specialists employed by the likes of Grace Bros, Anthony Hordern and Bebarfalds. The partnership performed strongly during the Depression and the following years owing to its still unique position in the market place. The

years preceding World War II saw the workforce increase to 17 and the introduction of less ornate 'Elizabethan' style dining settings and occasional pieces as standard production items to cater for the requirements of an expanding customer base. This included Beard Watson, Cotton Reid and Sharpe, Morley Johnson, Hall & Co, Mark Foys and RH. Gordon. The war years saw retail sales, and hence production, severely



*Example of a period reproduction chair*

curtailed. The partnership fulfilled defence contracts for such items as Mosquito Bomber components and ammunition boxes.

The immediate post war years saw restrictions on materials plus price controls. A formula for costing was enforced by the then Commonwealth Department of Trade and Customs. Manufacturers were issued with a number (Chiswell Bros' was No 46) which had to be stamped on every piece. This was the first manufacturer identification on Chiswell furniture. Minimum standards were progressively enforced with labelling to confirm compliance.

Owing to these restrictions and the conditions of the market place, further simplification of the 'Elizabethan', 'Jacobean', 'Queen Anne' and 'Chippendale' styles, manufactured to a price, were the 'bread and butter' of the partnership into the mid 1950s.

The folding leaf 'Eziway' extension table (above) was introduced. The action was developed by partner Jim from the American Seng Company hardware, extensively used in period extension tables pre-war. It used toothed metal runners engaging a central sprocket, which enabled both halves of the table top to be simultaneously extended by withdrawing one half only. The Chiswell 'Eziway' action substituted timber components for the extension runners and folding leaf pivots and mounts. Fortunately, the company still had access to prewar skills and as a result two major commissions were secured. Early in 1948, His Majesty King George VI proclaimed a tour of Australia, which was to be undertaken by the then Princess Elizabeth and Prince Phillip. The Government of NSW decided to

*... more on page 7*



Agents for **Hegner** German light machines, **Stubai** Austrian bench and carving chisels, **Gyokuchō** Japanese saws, **Marples** British layout tools, **Renaissance** British Museum Standard wax, **Joint Genie** British doweling jigs, **Brusso** American box and cabinet brassware **White Crocodile** German polishing brushes and hundreds of other quality tools, equipment items, book and video titles.

PO Box 1229 Mona Vale NSW 1660  
Ph: (02) 9979 7797 Fax: (02) 9979 8062  
[www.thewoodworks.com.au](http://www.thewoodworks.com.au)  
[info@thewoodworks.com.au](mailto:info@thewoodworks.com.au)



**CARBA-TEC**  
TOOLS FOR WOOD

**Voucher**  
**\*10% off**  
1 purchase instore  
Ad must be presented to claim offer.  
Valid until 30th October 2013

Get the latest  
Catalogue FREE!  
Sign up instore or online  
to receive your FREE copy!

Check out our full range  
of products online at  
**www.carbatec.com.au**  
**Order Toll Free: 1800 658 111**  
Visit us at: 113 Station Rd, Auburn NSW  
\* Offer excludes Festool & can't be used in  
conjunction with any other offer.

## Show your work in the newsletter

**With no space for a full scale dinning table in my small studio, I built the table and stools shown above to fit my space.**

The table top and rails are made from timber I have carefully chosen off the street - I'm not sure what it is, but it's a hard wood. The legs are also rescued but I can't remember where from . . .

The timber for the stools is pine - old bed slats, I think. And a friend very kindly made the cushions for me.

The finish is pretty standard: a few sanded coats of clear varnish, followed by some Danish oil and,

when a neighbour gave me some beautiful furniture wax I used some on the table top. In making the table, I wanted to see how far I could stretch the strategy of wrapping the rails around the legs, instead of the usual mortice and tenon approach.

I really like the simplicity of the design and find it's very versatile. It's also proved quite eye-catching: I recently made more of the stools and added a storage space underneath. I took one to a little market stall recently and two people ordered one!

**Jo Healy-North**

## Your turn: Show your work in the newsletter

Email the editor photos (at least 200 dpi) and a few words about the item (or items) [jhn@bigpond.com](mailto:jhn@bigpond.com)

provide a Royal Train for the occasion and placed the furnishing of the train in the hands of Grace Bros.

Four coaches were to be furnished and a contract was awarded to Chiswell Bros for the Royal Diner. All items were to be executed in the Robert Adam style.

The Royal dining chairs and table made by Chiswell Bros were of Spanish (Cuban) mahogany. The 18ft long table was made up of four 3ft 6ins x 3ft 6ins tables with two 2ft x 3ft 6ins 'D end' tables for each end. Eighteen oval backed chairs completed the set-

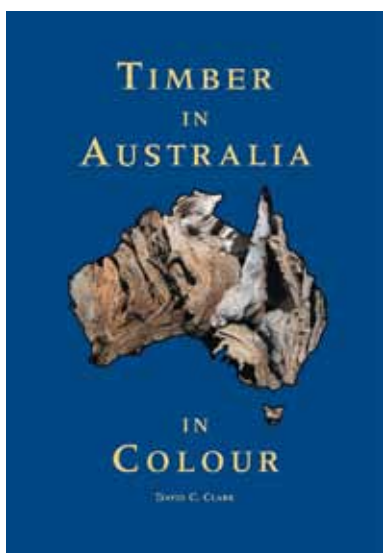
ting. A round table and four chairs of identical design, made at the same time for partner Brewer, still remain in his family.

The acclaim given to the Royal Train dining furniture led to the contract for the furnishing of the office for the NSW Railways Commissioner (Mr Reg Windsor) in 1952.

The 'Chippendale' style suite, consisting of a 6ft x 3ft 9ins double pedestal desk, six side chairs, one swivel base executive chair and a base for an existing drinks cabinet was all in Spanish (Cuban) mahogany. The furniture, minus the drinks cabinet base, is now in NSW Government House. The

year 1952 marked the untimely death of partner Charlie Chiswell, who had actively participated in the furniture section of the Sydney Chamber of Commerce, which evolved into the formation of the NSW Guild of Furniture Manufacturers in 1948. Charlie was a Guild Councillor in 1951-52.

*Part two of the History of the Chiswell Brothers will appear in the next newsletter. The series is kindly made available by Jamse and Margaret Chiswell and was first published in the 2010 August September newsletter of the Furniture History Society.*



**by David C Clark - \$35**

**The first full length, illustrated study of timbers available in Australia**

- 540 different timbers listed
- 560 full colour illustrations
- comprehensive introduction to timber as a material
- common and botanical name index
- specific information sections on eucalypts, Australian oaks and wattles
- technical notes on each timber: where it grows, mechanical and working properties, colour, texture and grain and uses

[www.palmerhiggsbooks.com.au](http://www.palmerhiggsbooks.com.au)

## WOODWORK CLASSES

**STUART FAULKNER & PAUL NICHOLSON**

### WE PROVIDE:

- tuition for all levels
- a 4:1 student to teacher ratio within a dynamic group setting
- day, evening, weekend term classes, specialist workshops and short courses
- a safe working environment and individual safety training
- a well maintained and fully equipped machine room
- a comprehensive selection of dedicated finely tuned quality student hand tools

### MORE INFORMATION

[www.splinterworkshop.com.au](http://www.splinterworkshop.com.au) – Woodwork Classes

Stuart: 0419 690 757 Paul: 0430 032 767

MEMBERS OF WOODWORKERS' ASSOCIATION OF NSW



**SYDNEY SCHOOL FOR WOOD**





# Other woodies

**The Hornsby Woodworking Men's Shed successfully brings together, in one community space, men and women to share their skills, have a laugh and work on practical woodworking tasks individually (personal projects) or as a group for the shed or the community. The group activities focus on toy making for sale or for charities, particularly at Christmas.**

The club's mission is to attract people with an interest in working with wood, create an environ-

ment where members can start learning or improve their wood-working skills by being provided with equipment, knowledge and assistance and to help charities by making toys and other items for others in need.

The shed is a great place to learn new skills. Members are shown a plethora of skills they never had the opportunity to learn in their working life.

In fact, the quality of some items that we produce would be

the envy of professionals. Women members fit in comfortably and add vitality. In fact, they are among the most ardent supporters recognising as they do, the role the shed plays in mitigating the "underfoot syndrome" – the after-retirement shock of suddenly being with each other every hour of the day: new friendships are forged outside established social circles.

## Health

On a more serious note, given that men are notorious for not taking as much care of their health as they should, our shed provides regular access to health



professionals where informative talks and advice are given in a collective environment, where the informality makes for a more relaxed and effective atmosphere. Our monthly meetings feature a variety of other guest speakers of broad interest, from a variety of backgrounds. Overall, we have a real sense of community and readily collaborate with other sheds to help foster the concept and community links.

## Safety

Recently, a safety procedure statement was completed for all the woodworking machinery to ensure better and more effective workplace health and safety. Members have to read and under-

## The Sydney Woodcarving Group

The SWG meets regularly at four locations, where our members share their expertise and ideas. Beginners are welcome – tools and timber supplied for learning projects. Groups meet at:

**Southside (Lilli Pilli):** First Saturday of the month and one weekday evening

**Epping:** Second and forth Wednesday of the month

**Chester Hill:** Second Saturday of the month

**Shellharbour:** First Monday and third Saturday of the month.

For more information and location details, phone  
Rosemary Mackie on  
0419 607 489 or visit

[www.sydneymwoodcarving.org.au](http://www.sydneymwoodcarving.org.au)

*More next page . . .*





stand the procedures before they operate any machinery, and are supervised until they are competent. These safety procedures are available to other sheds to assist them with this important process.

We have well over 100 members, most of whom are retired. Those attending are able to work in our fully equipped and spacious workshop, which includes lathes, bandsaws, pedestal drills, table saws, routers, disc sanders, finishers, hand tools and all the other relevant machinery.

These machines are used successfully and safely because of the shed's supervisory structure, the willingness of members to comply with shed rules and their general compatibility with each other. The camaraderie is infectious.

#### ***Donated timber***

Our supply of wood is mostly donated from the community and is very much appreciated. It is our lifeline. Thus excess and unwanted wood is given a new life and saved from becoming landfill. Our 'can do' committee oversees and monitors every aspect of the whole operation.

The shed is at 33A Sefton Road Thornleigh and open for workshops on Tuesdays and Fridays (9.30am to 2.30pm) and Saturday afternoons (12.30 to 4.00pm). Visitors are welcome, just come in any time during opening hours. For more information contact the secretary Philip Hirshbein, on 0401 068 666, or phil@bein.id.au



**TREND TIMBERS**  
SPECIALISTS IN FINE WOODS

**TIMBER, TOOLS AND MACHINERY SALES.**  
**Visit our all new purpose built showroom.**

**NSW distributors of Jet and Powermatic  
woodworking machinery. Over 80 species of  
timber for cabinet & furniture making, joinery,  
boat building, wood carving & turning.**



**15 Railway Rd North, MULGRAVE 2756**

**Ph: 02 4577 5277 Fax: 02 4577 6846**

**Email: [sales@trendtimbers.com.au](mailto:sales@trendtimbers.com.au)**

**[www.trendtimbers.com.au](http://www.trendtimbers.com.au)**

## **Buick tools for sale**

**130 Camden Street, Newtown 2042,  
02 9557 5799**

David Buick is moving, so all tools and machinery going at bargain prices: Wadkin Bursgreen table saw 10ags, Meber 400 professional bandsaw, Multico 9 inch planer, 3 phase, Excellor cadet mortice master chain mortiser, 1ph, a lathe, 1 metre, Tormek super grinder-whetstone, bench drills, Multico and Hafco,

Advantech dust extractor 2hp, single phase, a variety of hand tools, some antiques, and a selection of timbers: Queensland Maple, Cyprus Pine, Imbuia, Silky Oak, Tasmanian Oak and Jarra.

# Hammer®

Perfect woodworking.

## Big on Performance. Easy on the Budget.

Perfect for applications which require high levels of precision and robust enough to contend with challenging professional demands.

### Amazing Specials

#### N3800 Bandsaw

- Large wheels (Ø 380 mm)
- Cutting height 310 mm
- Rip capacity 360 mm
- Tilttable table

**now only 1,819.00**  
\$ excl.GST



### FELDER-GROUP AUSTRALIA

NSW Emu Plains, Email: [admin@felder.net.au](mailto:admin@felder.net.au)  
WA Malaga, Email: [sales@krengineering.com.au](mailto:sales@krengineering.com.au)  
QLD Darra, Email: [info@felderqld.com.au](mailto:info@felderqld.com.au)  
VIC Melbourne, Email: [info@feldervic.com.au](mailto:info@feldervic.com.au)

[www.hammer-australia.com](http://www.hammer-australia.com)

#### Immediate-Info:

NSW (02) 4735 1011  
WA (08) 9209 3055  
QLD (07) 5543 5599  
VIC (03) 9018 8346



#### A3 26 Planer Thicknesser

- Remarkably user friendly
- Allows for rapid retooling
- Solid cast iron planer tables
- 3 knife quick-change self-setting cutterblock system

**now only 3,221.00** \$ excl.GST



*Silent  
POWER*  
Spiral blade cutterblock =  
Pulling cut\*

Extremely quiet, noise is reduced by half.  
Usable blade life twenty times  
longer than standard blades.



Video online



#### C3 31 Combination machine

- Surface planing width 310 mm
- 3 knife quick-change self-setting cutterblock system
- Saw blade tilttable 90°-45°
- Solid cast iron tables and units
- Quick change-over times

**now only 9,282.00** \$ excl.GST



#### K3 basic Panel Saw

- Solid cast iron tables and units
- Aluminium rip-fence with profile bar guide
- Extremely durable

**now only 4,734.00** \$ excl.GST

\* Optional: all planer/thicknessers are also available with the new Silent-POWER spiral knife cutterblock. Prices valid till 30th November or while stocks last



### Quality timber stockists

144 Renwick Street  
Marrickville, NSW 2204  
P: 02 9558 8444, F: 02 9558 8044  
anagote@hotmail.com  
Monday to Friday: 8am - 4pm  
Saturday: 9 - 11:30am

## Liberon Products Australia Pty Ltd



Liberon products have been known around the world since the early 1900's initially created in France. They have an enviable reputation for high quality restoration and the finishing of wooden furniture and antiques.

We were known previously in Australia as Liberon Enterprises, but with a new owner and new name, we are no longer at Fyshwick in the ACT.

For a full colour catalogue, email Carol at address as below.

Woodworkers' NSW members received our products at wholesale prices, plus postage/freight.

PO Box 306, Eumundi QLD  
4562

P 07 5471 1028

carol@liberon.com.au

www.liberon.com.au



*Delivered September 1999, single phase, 3X2KW motors, excellent condition, beautifully engineered.*

## FELDER BF6-31 combo machine for sale

**Contact David Muston - 02 9949 6384**

- Circular saw with sliding table, cross cut fence, micro-adjustable ripping fence, 300mm diameter blade
- Spindle moulder - 30mm diameter spindle plus high speed spindle (for use with router cutters)
- Planner/thicknesser - 300mm wide, 4 knife self-setting disposable knife system, digital read out on thicknesser
- Fitted trolley



# Association member discounts

- Allwood Cabinet Timbers, Nowra, 4423 3295 [www.philipgould.com.au](http://www.philipgould.com.au)
- Anagote Timbers, Marrickville, 9556 6444 (10% discount)
- Feast Watson, H/O Scoresby Vic. 1800 252 502 [www.feastwatson.com.au](http://www.feastwatson.com.au)
- F&K Electrics Power tools, Stanmore, 9519 7997 (10% discount - varies)
- Henry Bros Saws, Vineyard, Saw blades, knives, cutters, 9627 5486 (trade prices)
- Howard Products, Tamworth, orange oil, wood care products, 1800 672 646  
[www.howardproducts.com.au](http://www.howardproducts.com.au)
- HNT Gordon, Alstonville, classic plane makers, 6628 7222 [www.hntgordon.com.au](http://www.hntgordon.com.au)  
(10% discount)
- Laminex Industries, Caringbah, NSW, sheet products, 132 136
- Liberon Products Australia Pty Ltd, Eunundi, SE Queensland, 07 5471 1028 [carol@liberon.com.au](mailto:carol@liberon.com.au)  
[www.liberon.com.au](http://www.liberon.com.au) (wholesale prices)
- Major Woodworking Equipment, Padstow, 9708 3233 [www.majwood.com.au](http://www.majwood.com.au)  
contact Ryan, (5-15% discount)
- Mathews Timbers, St Marys, 9833 3100
- The Natural Paint Place, King Street, Newtown, 9519 0433  
[www.energyandwatersolutions.com.au](http://www.energyandwatersolutions.com.au)
- Nover & Co, Eastern Creek, NSW, sheet products, kitchen hardware, 9677 3200  
[www.nover.com.au](http://www.nover.com.au)
- Roger Gifkin's Dovetail Jig, 6651 9513, [www.gifkins.com.au](http://www.gifkins.com.au) (10% discount)
- Trend Timbers, Mulgrave/Windsor, 4577 5277 [www.trendtimbers.com.au](http://www.trendtimbers.com.au)
- Veneercraft, Padstow, wood veneers, 9533 4294 (10% discount)
- Warringah Timbers, Dee Why, 9981 3733

**Please contact the editor if your listing is no longer current  
or needs amending. [jhn@bigpond.com](mailto:jhn@bigpond.com)**

***Remaining 2013 deadline dates: 2 September, 4 November***

# NSW WWA member ads

- 1955 Wadkin 300mm planer 3Hp
- Invicta Delta 400mm thicknesser 7.5Hp,
- 1942 Wadkin 30in bandsaw (wheels newly rubbered, new bearings top and bottom)
- 1959 Ross 17cfm compressor plus regulator, fittings, hoses and a 2-quart pressure pot spray gun.

All 3-phase motors and all in great condition (albeit not very pretty). I have instruction manuals for the jointer, thicknesser and bandsaw.

I also have some very nice highly figured yellow box approx 1 cubic metre, and quite a lot of shorts of river red gum, plus other bits and pieces. Make an offer I can't refuse.  
[nicholashill@ozemail.com.au](mailto:nicholashill@ozemail.com.au)  
 or call 02 9997 8788

## • AngleMag saw guide

\$75 for members

\$100 for non-members

Contact Peter Harris  
 or Kim Larymore  
 (see last page for contact details)



Terry Gleeson  
maker of  
Fine Furniture



- Terry Gleeson's  
**School of Woodwork**  
 1191 Old Nothern Road  
 Middle Dural NSW 2158  
**P: 02 9651 1012**  
**F: 02 9651 1341**  
[thechairmaker@ozemail.com.au](mailto:thechairmaker@ozemail.com.au)



- Richard Crosland's  
**School of Fine Woodworking**

Learn with the master Richard Crosland's school provides small, hands-on classes for students of all levels. The friendly, creative atmosphere fosters progress and many beautiful pieces are the lasting result.

All tools are provided and work in progress can be stored at the Alexandria workshop.

Call Richard at the school  
**02 9313 4142, or visit**  
[www.crosland.com.au](http://www.crosland.com.au)



## • Tormek 1002 SuperGrind tool sharpening system

Early model Tormek without internal motor (a drill drives the wheel). In as-new condition with tool attachment. Wheel is 250mm x50mm SuperGrind stone (RRP around \$300 on its own). Suits all current Tormek accessories and comes with drill as shown for \$250 (or best offer).

Contact Michael McGrath  
**02 9949 6683, or**  
[accent@swiftdsl.com.au](mailto:accent@swiftdsl.com.au)



- Jim Davey's User  
**Bedrocks-fettled Stanleys**

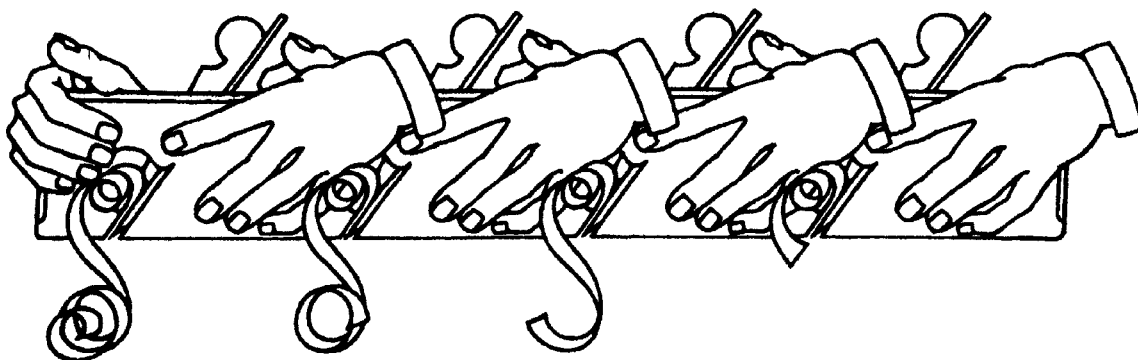
Repairs and Service

Academy HSS irons  
 G15 Rust Preventative

Trade prices on:  
 DMT diamond plates  
 and King waterstones  
**4447 8822 (bh)**  
**4447 8790 (ah)**  
[jdavey@bigpond.com](mailto:jdavey@bigpond.com)

**For new listings, or to update an existing listing, contact the editor**  
**[jhn@bigpond.com](mailto:jhn@bigpond.com)**

*Remaining 2013 deadline dates: 2 September, 4 November*



## Association Committee contact information

### Committee members

**Chair:** Vacant

**Vice Chair:** Rick Bartholomew • 02 9476 6676 • rickardo@idx.com.au

**Secretary/Public Officer:** Merv Walter • 02 9634 2066 • secretary@woodworkersnsw.org.au

**Treasurer:** Miko Nakamura • 02 9805 1775 • treasurer@woodworkersnsw.org.au

### General committee members

Brian Dawson • 02 9880 7646 • 0418 212 496 • brian@valuesystems.com.au

Frank Duff • 02 9896 4017 • 0403 821 389 • fwduff@optusnet.com.au

Peter Dunn • 02 02 4344 7806 • 0410 411 951 • bentneck@bigpond.com

Peter Harris • 02 9879 3329 • peterh47@ihug.com.au

Steve Townsend • 02 9719 8753 • 0411 477 075 • Steve@ibis4.com

### Currently assisting the committee

**Membership Secretary:** Peter Hunt • 0418 867 870 • p\_j\_hunt@msn.com.au

**Newsletter/Website:** Jo Healy-North • 0417 667 367 • jhn@bigpond.com

### Life members

Richard Crosland, Phil Lake, Kim Larymore, Leon Sadubin, Richard Vaughan, Alan Wale

### New members update

Benedetto Parolini and Ken Pitman

**If you'd like to join the committee or be more involved in the association, call Merv Walter**

*If undelivered please return to PO Box 1016 Bondi Junction NSW 1355*

POSTAGE  
PAID