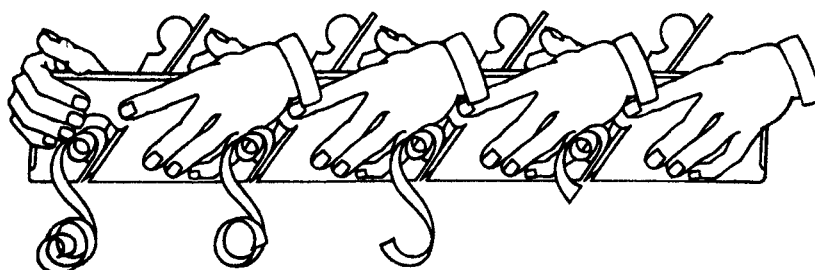


Woodworkers Association of NSW inc

ABN 51 544 261 324

Newsletter

May June 2014



Association members take a break outside the Abbotsford workshop

Workshop open every Sunday

Our first weekly workshop opening on Sunday 5 May was a great success. Fourteen people attended including 2 new members. Several members came with their own projects to work on, including a first timer.

John Brassell demonstrated circle cutting on the small bandsaw on a jig invented and made by John Kirkwood. The workshop was literally buzzing.

We encourage members to participate and use our excellent facilities and we look forward to seeing you on Sundays at the regular time of 10am to 4pm.

Brian Dawson

Next association member meeting

7 for 7.30pm, Monday 2 June 2014

Abbotsford workshop, Western end of Spring Street, Abbotsford

Members who participated in the African Mahogany competition will speak about their work. See page 5 for the box made by association member Peter Harris

Your new committee

At the annual general meeting four office bearers were elected. Without a surplus of nominations no election was required.

The returning officer, Gordon Joseph, declared the following elected:

Chairman: Brian Dawson

Vice chairman: Phil Lake

Secretary: Steve Townsend

Treasurer: Miko Nakamura

Committee members:

John Connors, Frank Duff, Peter Dunn, Peter Harris. For contact details see back page.

Chairman's chatter



Newly elected association Chairman, Brian Dawson

I would like to give a vote of thanks to Steve Townsend who has been working under the title of Vice chairman but who has effectively been the Chairman this past year. Steve worked tirelessly over the year and I'm sure will make an excellent Secretary.

Many of you will have seen my name in the newsletter but few have met me so let me introduce myself. My working life has taken a few twists and turns via quantity surveying, lecturing at the University of Westminster and working at Leighton contractors but has always been in the construction industry. I have had my own management consultancy firm for the past 30 years but I am

now well and truly retired. I am an amateur woodworker, having played around with wood since my first house conversion in London in the seventies but it was not until my arrival in Sydney in the early eighties that I seriously "got into it".

In my first owner builder role, I decided to build my workshop first then the house. The workshop was almost triple garage size with an upper floor for storage and was the best workshop I ever had. I bought some serious woodworking machinery and tools, read lots of books and magazines and made things: the usual sort - cutting boards, tables, boxes, bookshelves, a bed and so on. I loved every minute of it

but it wasn't until I went to Sturt School of Wood in Mittagong, 4 years ago, that I found out how little I knew. I did a 12-week course with one of the original graduates, Toby Muir Wilson - a wonderful and inspiring teacher. (You can see his work by Googling his name and looking at his flickr site.)

I considered joining the NSW Woodworkers Association about 10 years ago but it all looked too "professional" and beyond my skill level. I have since realised that this is an association for amateurs as well as professionals. Currently we have 29 per cent professional, 14 per cent semi professional and the rest amateurs. We believe this is a good mix and would like to maintain it. We wish to encourage all levels of experience to our Association

I am excited and honoured to be your Chairman and I will work hard for the Association. At our first committee meeting we decided to focus on a couple of areas. The first is safety. We have started a systematic review of safety procedures and will be implementing a series of initiatives regarding machine operation, general safety procedures and accreditation.

The second is opening times of the workshop. We have decided to open every Sunday to encourage greater use of our excellent facilities.

We are also looking at a range of other issues. These include having regular exhibitions, having better representation of members' work on our website and creating new brochures. Please contribute any ideas or suggestions you may have.

Brian Dawson



The timber louvres in one of our new storage sheds had rotted away and posed a security threat. Phil Lake leapt to the rescue and is currently finishing off fitting his beautifully crafted western red cedar replacement. Beautiful job!

Last year's ups and downs

Retiring vice-chairman Steve Townsend reported to the AGM on the achievements of the last year, including:

- Finalising a new lease from Canada Bay Council (thanks to Phil Greenwood) at a peppercorn rent, with an extra two lockable storage sheds.
- Increasing use of the workshop, two Wednesdays monthly, and the last Sunday of the month.
- Installing a new 18-inch Laguna bandsaw and new dust extraction (still to be plumbed in)
- Shed maintenance continued with feathered boards for heritage cladding renewal acquired; louvers in one storage shed have been replaced (see above).
- Excellent speakers and presentations at general meetings and some great visits undertaken.
- Exhibitions held.
- Workshop Open Day for Council's Seniors Week: well attended, and several new members gained

as a result. Later in 2014 an open day plus woodworking course will be held.

But on the downside there was a 12 per cent drop in membership, with an associated drop in income. A campaign for more members and younger members in particular is needed to ensure a healthy future for the association.

Steve Townsend extended a special thanks to Peter Harris for managing the workshop; to Peter Hunt for the enormous work done on membership records and mail-outs; to Gordon Joseph who has taken over as membership secretary at short notice; to treasurer, Miko Nakamura, for pushing the coming Lane Cove exhibition and many other services; to Phil Lake, as secretary, for his knowledge and hard work; to Jo Healy-North for the newsletter and assistance with advertisers; and to all the retiring committee members.

Hand-Krafted

At the last general meeting Phil Martin, spoke about his website, www.handkrafted.com which brings together makers and buyers of hand-crafts.

Phil believes that participating in the creation of something unique and of high quality evokes a great feeling of pride and satisfaction.

Phil is passionate about making handmade craftsmanship more accessible through Handkrafted, so more people can appreciate and enjoy purpose made pieces in their daily lives.

The target audience for customers is readers of design magazines, a younger demographic. For more information and to sign up, visit

www.handkrafted.com

Australian Wood Review

Wood Diary

Event listings in the magazine and website for free. Submit your info 5-6 weeks before the magazine goes on sale.

Doctor Wood

AWR runs a question column. Send your woodworking question or problem to . . . doctorwood@woodreview.com.au . . . and they'll hunt round for the answer.

Stories

Tell them your story. And tell them what stories you'd like to read in the magazine (or if you'd like to write for them.)

Contact Linda Nathan, Editor

Australian Wood Review

Published by
Interwood Holdings P/L
P 07 3806 2288
F 07 3806 2277
woodreview.com.au
PO Box 4336
Loganholme DC Qld 4129



Seniors Week Workshop open day

Half a dozen volunteers were on hand on Sunday 23 March to help with proceedings of the NSW Woodworkers open day for Seniors Week.

Those who came to the open day were well looked after by our team and were very interested in what we had to offer. So much so that three people signed up for membership and several made enquiries about joining.

We could have more open days, and not just for Seniors Week: three new members from a dozen or so visitors on one open day suggests we could get quite a few more members.

We could also have better advertised the event and could have better signage around the workshop: one of the new recruits said he had been to our workshop twice, looked in the window, and wanted to find out more.

The new recruit contacted Canada Bay Council but no-one there could tell him when the workshop was open. He spoke to a park ranger who also could not help with contact details or opening times. A sign on the door of the workshop would have solved the problem. But in sum, it was a successful day. I feel we can profitably expand this activity.

Brian Dawson

Who will build our letterbox?

Our address with the Department of Fair Trading has had to change to "50A Spring Street, Abbotsford" (they won't accept a PO box number). Therefore we may occasionally get mail sent to that address. Currently there is nowhere for the postman to put letters. We need a letterbox. It needs to be at the front of the building, not too close to the street, mounted on a pole. It should have "50A" in easily visible letters. Please phone our secretary, Steve Townsend, on 0411 477 075 to let him know if you would like to build it for us.



A letterbox built by Frank Duff for his son using 100 year old feathered weather boards from the Kiara Cheese factory, destroyed in a gale, boards that were halved, with help from Kim on the small bandsaw in our workshop.

On show for Seniors Week



Blanket Chest made by Brian Dawson. The chest was Brian's response to "Create from a Crate" competition. "My pallets were mostly American white and red oak. I produced the wavy effect on the front panels by cutting 60 profiles and glueing them alternately together. The legs and frame were fumed to create a darker look. The legs are tapered and all six panels are floating to allow for shrinkage.

Member's Discount!

5% off*

purchases made in-store at Carba-Tec® Sydney.

Proof of Woodworkers Association NSW membership must be presented in-store at Carba-Tec® Sydney.

In-Store Demonstrations!

Stay tuned to our website for up & coming demonstrations!

- ▶ Product Reviews
- ▶ Articles
- ▶ Demonstrations
- ▶ Projects
- ▶ Tips & Tricks
- ▶ Woodworker Profiles
- ▶ Videos

Develop & Discover Woodworking

Check out our full range of products online at www.carbatec.com.au

Order Toll Free: 1800 658 111

Visit us at: 113 Station Rd, Auburn NSW

* Offer excludes Festool & can't be used in conjunction with any other offer.



The African mahogany box competition was judged at the April general meeting and was won by this entry from Peter Harris. Peter based it on one by Roy Tsumoto in 400 Wood Boxes. "The wood allocated to me had a pair of book matched pieces with fantastic grain," says Peter. "Making these into the top and front of the box was an obvious necessity." The "innards" were some other mahogany from a discarded bookshelf Peter had in his woodshed. The dovetail joints had tails cut with a router and hand-cut pins. The finish is shellac and wax.



Creations in Wood

Members Exhibition September 2014

Lane Cove Gallery

Tuesday 2 to Saturday 13 September 2014

Any questions or if you want more information, contact:

Phil Lake 0403 114 712 || philwoodie@gmail.com

Brian Dawson 0418 212 496 || brian@valuesystems.com.au

Peter Dunn 0410 411 951 || bentneck@bigpond.com

Miko Nakamura 02 9805 1775 || treasurer@woodworkersnsw.org.au



WOODIES LOVE US, THIS WE KNOW

Feed-N-Wax Penetrates and feeds dry wood leaving a superior natural wax finish.

Orange Oil This was the first orange oil ever made for polishing and sealing wood and it remains by far the best product of its type available.

HOWARD Restore-A-Finish Remove heat rings and scratches from furniture finishes instantly and permanently.

HOWARD PRODUCTS
1800 672 646
www.howardproducts.com.au

Now you can buy ONLINE straight from our website



Square Drive Screws
Heard They're Good? Try Them!

- High Quality
- Easier Driving
- Better Control
- Longer Life
- Heat Treated Steel
- Small Body Diameter
- Sharp Point

Wide Range of Sizes
Introductory Pack
500, #8 and 10 Gauge screws with driver included
\$46.00 inc. post

SCREW-IT-SCREWS

BUY ON-LINE AND SAVE!
www.screwitscrews.com.au

To update or change

Your advertisement, or to submit new artwork, simply email jhn@bigpond.com

Newsletter columns
1 col: 05.4 cm
2 col: 11.2 cm
3 col: 17.0 cm

Submit content as text (in Word)
Submit images as jpegs, min 210 dpi

To contact the editor
email Jo Healy-North at jhn@bigpond.com

The Hand and the Chisel

A biography of an exceptional craftsman from the elite trade of carving, who rendered in wood and stone with grace and perfection, from tiny wooden carvings to the ornate facades of public buildings and churches, all executed with perfect precision.

This colour illustrated record of Godfrey's known (Australian and NZ) work is a revealing and long-overdue tribute to his incredible talent.

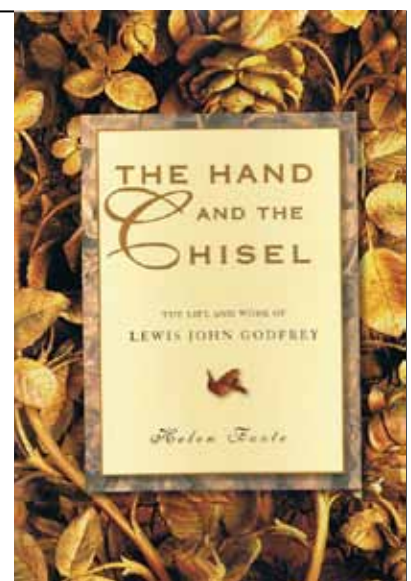
The author, Helen Foote, is Lewis John Godfrey's great-grand-daughter. Before Helen began the book, the little she knew about him was that, in his day, he was a carver of some repute. What began as a casual enquiry became a quest, as Helen discovered more and more impressive works by Godfrey in Australia and New Zealand.

*Published by Melbourne Publishing Group Pty Ltd
(A4 paperback with French flaps, 76 pp)*

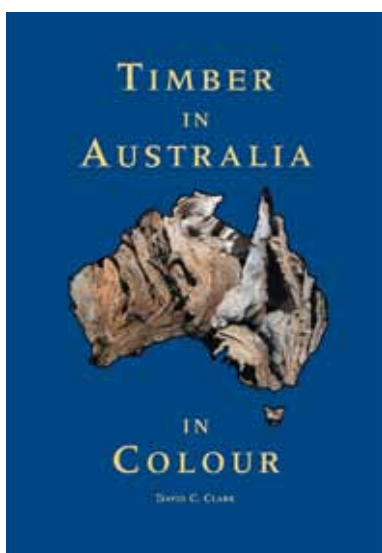
TO ORDER

Email: m.mumford@melbournepublishing.com

Or: Fax 03 5629 9043 || Phone 0408 343 992 || www.melbournepublishing.com



WWA members: \$29.95*
Regular price: \$34.95
*** (+ free postage in Australia)**



by David C Clark - \$35

The first full length, illustrated study of timbers available in Australia

- 540 different timbers listed
- 560 full colour illustrations
- comprehensive introduction to timber as a material
- common and botanical name index
- specific information sections on eucalypts, Australian oaks and wattles
- technical notes on each timber: where it grows, mechanical and working properties, colour, texture and grain and uses

www.palmerhiggsbooks.com.au

WOODWORK CLASSES

STUART FAULKNER & PAUL NICHOLSON

WE PROVIDE:

- tuition for all levels
- a 4:1 student to teacher ratio within a dynamic group setting
- day, evening, weekend term classes, specialist workshops and short courses
- a safe working environment and individual safety training
- a well maintained and fully equipped machine room
- a comprehensive selection of dedicated finely tuned quality student hand tools

MORE INFORMATION

www.splinterworkshop.com.au – Woodwork Classes

Stuart: 0419 690 757 Paul: 0430 032 767

MEMBERS OF WOODWORKERS' ASSOCIATION OF NSW



SYDNEY SCHOOL FOR WOOD

Get your work shown

The committee has decided to add a long-overdue gallery section to the association's website. We want to showcase the amazing accomplishments of our members. Send photos of your best pieces with information about the materials, tools and techniques used in making the piece. Particular problems that had to be overcome are always of interest.

Use top quality photos with good lighting and a plain background to best show your work.

Digital photos should be emailed to
Steve Townsend at steve@ibis4.com



Agents for **Hegner** German light machines, **Stubai** Austrian bench and carving chisels, **Gyokucho** Japanese saws, **Marples** British layout tools, **Renaissance** British Museum Standard wax, **Joint Genie** British doweling jigs, **Brusso** American box and cabinet brassware **White Crocodile** German polishing brushes and hundreds of other quality tools, equipment items, book and video titles.

PO Box 1229 Mona Vale NSW 1660
Ph: (02) 9979 7797 Fax: (02) 9979 8062
www.thewoodworks.com.au
info@thewoodworks.com.au



TREND TIMBERS
SPECIALISTS IN FINE WOODS

TIMBER, TOOLS AND MACHINERY SALES.
Visit our all new purpose built showroom.

NSW distributors of Jet and Powermatic
woodworking machinery. Over 80 species of
timber for cabinet & furniture making, joinery,
boat building, wood carving & turning.



15 Railway Rd North, MULGRAVE 2756

Ph: 02 4577 5277 Fax: 02 4577 6846

Email: sales@trendtimbers.com.au

www.trendtimbers.com.au



ANAGOTE PTY LTD

Quality timber stockists

144 Renwick Street
Marrickville, NSW 2204
P: 02 9558 8444, F: 02 9558 8044
anagote@hotmail.com
Monday to Friday: 8am - 4pm
Saturday: 9 - 11:30am

**Liberon Products
Australia Pty Ltd**



Liberon products have been known around the world since the early 1900's initially created in France. They have an enviable reputation for high quality restoration and the finishing of wooden furniture and antiques.

We were known previously in Australia as Liberon Enterprises, but with a new owner and new name, we are no longer at Fyshwick in the ACT.

For a full colour catalogue, email Carol at address as below.

Woodworkers' NSW members received our products at wholesale prices, plus postage/freight.

PO Box 306, Eumundi QLD
4562

P 07 5471 1028

carol@liberon.com.au

www.liberon.com.au

Free timber brochures from Boral

Members may be interested in brochures about timber distributed by Boral Limited.

They're mostly on flooring and decking but the *Species Quick Reference Guide* lists 19 hardwood species with technical information on qualities including hardness, density, strength, fire ratings and susceptibility to termites and borers.

To to <http://www.boral.com.au/> Click on "Brochures" then "Timber" and you'll find a list of brochures as PDF files (and/or link to request printed copies)

Hammer®

Perfect woodworking.

Big on Performance. Easy on the Budget.

Perfect for applications which require high levels of precision and robust enough to contend with Challenging professional demands.

N3800 Bandsaw

- Large wheels (Ø 380 mm)
- Cutting height 310 mm
- Rip capacity 360 mm
- Tilttable table

From 1,964.⁵⁰
\$ excl. GST



FELDER-GROUP AUSTRALIA

NSW Emu Plains, Email: admin@felder.net.au
WA Malaga, Email: sales@krengineering.com.au
QLD Darra, Email: info@felderqld.com.au
VIC Melbourne, Email: info@feldervic.com.au
SA Adelaide, Email: info@henryeckert.com.au

www.hammer-australia.com

Immediate-Info:

NSW (02) 4735 1011
WA (08) 9209 3055
QLD (07) 5543 5599
VIC (03) 9018 8346
SA (08) 8241 7777



A3 26 Planer Thicknesser

- Remarkably user friendly
- Allows for rapid retooling
- Solid cast iron planer tables
- 3 knife quick-change self-setting cutterblock system

From 3,479.²⁰ \$ excl. GST



Silent POWER

Spiral blade cutterblock = Pulling cut*

Extremely quiet, noise is reduced by half.
Usable blade life twenty times longer than standard blades.



C3 31 Combination machine

- Surface planing width 310 mm
- 3 knife quick-change self-setting cutterblock system
- Saw blade tilttable 90°-45°
- Solid cast iron tables and units
- Quick change-over times

From 10,024.⁶⁰ \$ excl. GST



K3 basic Panel Saw

- Solid cast iron tables and units
- Professional rip-fence with round bar guide
- Extremely durable

From 5,113.³⁰ \$ excl. GST

* Optional: all planer/thicknessers are also available with the new Silent-POWER spiral knife cutterblock. Valid till 30th April 2014 or while stocks last

Association member discounts

- Allwood Cabinet Timbers, Nowra, 4423 3295 www.philipgould.com.au
- Anagote Timbers, Marrickville, 9556 6444 (10% discount)
- Feast Watson, H/O Scoresby Vic. 1800 252 502 www.feastwatson.com.au
- F&K Electrics Power tools, Stanmore, 9519 7997 (10% discount - varies)
- Henry Bros Saws, Vineyard, Saw blades, knives, cutters, 9627 5486 (trade prices)
- Howard Products, Tamworth, orange oil, wood care products, 1800 672 646
www.howardproducts.com.au
- HNT Gordon, Alstonville, classic plane makers, 6628 7222 www.hntgordon.com.au
(10% discount)
- Laminex Industries, Caringbah, NSW, sheet products, 132 136
- Liberon Products Australia Pty Ltd, Eunundi, SE Queensland, 07 5471 1028 carol@liberon.com.au
www.liberon.com.au (wholesale prices)
- Major Woodworking Equipment, Padstow, 9708 3233 www.majwood.com.au
contact Ryan, (5-15% discount)
- Mathews Timbers, St Marys, 9833 3100
- Nover & Co, Eastern Creek, NSW, sheet products, kitchen hardware, 9677 3200
www.nover.com.au
- Roger Gifkin's Dovetail Jig, 6651 9513, www.gifkins.com.au (10% discount)
- Trend Timbers, Mulgrave/Windsor, 4577 5277 www.trendtimbers.com.au
- Veneercraft, Padstow, wood veneers, 9533 4294 (10% discount)
- Warringah Timbers, Dee Why, 9981 3733

**Please contact the editor if your listing is no longer
current or needs amending. jhn@bigpond.com**

**2014 copy deadlines:
Wed 25 June, Mon 25 August, Sun 25 October**

Member notices and adverts



Workshop open days

Instead of every second Wednesday, our Abbotsford workshop will now be open from around 10.00am on the second and fourth Wednesdays of each month.

So in March the Workshop will be open on 12 and 26 March and 9 and 23 April.

The workshop will also be open every Sunday from now on until further notice.



- Richard Crosland's
School of Fine Woodworking

Learn with the master Richard Crosland's school provides small, hands-on classes for students of all levels. The friendly, creative atmosphere fosters progress and many beautiful pieces are the lasting result.

All tools are provided and work in progress can be stored at the Alexandria workshop.

Call Richard at the school
**02 9313 4142, or visit
www.crosland.com.au**

**For new listings, or to update an existing listing,
contact the editor at jhn@bigpond.com**



- Jim Davey's User
Bedrocks-fettled Stanleys

Repairs and Service
Academy HSS irons
G15 Rust Preventative

Trade prices on:
DMT diamond plates
and King waterstones
4447 8822 (bh)
4447 8790 (ah)
jdavey@bigpond.com



Terry Gleeson
maker of
Fine Furniture



- Terry Gleeson's
School of Woodwork
1191 Old Northern Road
Middle Dural NSW 2158

P: 02 9651 1012

F: 02 9651 1341

thechairmaker@optusnet.com.au

- **AngleMag saw guide**

\$75 for members, \$100 for non-members. Contact a committee member (see last page for contact details)

Free sheet of glass

600 x 600 x 8mm with a 30mm wide bevel all round.
Makes a good coffee table top. Pick up in Drummoyne.
Call Steve Townsend on 0411 477 075

The Sydney Woodcarving Group

The SWG meets regularly at four locations. Beginners are welcome. Tools and timber supplied for learning projects. Groups meet at:

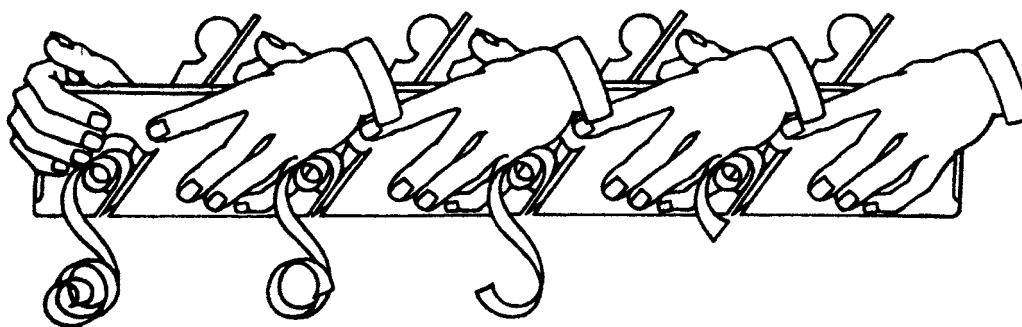
Southside (Lilli Pilli): First Saturday of the month and one weekday evening

Epping: Second and fourth Wednesday of the month

Chester Hill: Second Saturday of the month

Shellharbour: First Monday and third Saturday of the month.

For more information and location details, phone Rosemary Mackie on 0419 607 489 or visit www.sydneymwoodcarving.org.au



Association Committee contact information

Committee members

Chair: Brian Dawson • 0418 212 496 • brian@valuesystems.com.au

Vice Chair: Phil Lake • 0403 114 712 • philwoodie@gmail.com

Secretary/Public Officer: Steve Townsend • 0411 477 075 • secretary@woodworkersnsw.org.au

Treasurer: Miko Nakamura • 02 9805 1775 • treasurer@woodworkersnsw.org.au

General committee members

John Connors • 02 9818 4728 • 0423 989 963 • connorsjohn@icloud.com

Frank Duff • 02 9896 4017 • 0403 821 389 • fwduff@optusnet.com.au

Peter Dunn • 02 4344 7806 • 0410 411 951 • bentneck@bigpond.com

Peter Harris • 02 9879 3329 • 0419 164 098 • peterh47@ihug.com.au

Currently assisting the committee

Membership Secretary: Gordon Joseph • 0409 488 919 • membership@woodworkersnsw.org.au

Newsletter/Website: Jo Healy-North • 0417 667 367 • jhn@bigpond.com

Life members

Richard Crosland, Phil Lake, Kim Larymore, Leon Sadubin, Richard Vaughan, Alan Wale

Welcome to new members

Mitchell McDermott, Nicolas McIntosh and Stephen Sall

If you'd like to join the committee or be more involved in the association, call a committee member!
