

Woodworkers Association of NSW inc

March April 2016 Newsletter

Woodwork joy!

Course participant Valerie Odewahn's work, showing the cranky grain of this unknown piece of eucalypt and resin-filled timber irregularity. (Hinges coming soon.)

In early March, eight of us were very fortunate to spend five days at the Abbotsford workshop with Alex Springall at the Box Making Course he kindly presented. Having marvelled at some of the samples on view on Alex's website (<http://www.springall-fine-woodwork.com>) I was very excited to be a part of the course.

The material for our boxes was kindly pre-jointed and planed by Peter Harris, who along with John Kirkwood, assisted with the machines, as well as valuable advice.

Under Alex's expert guidance, we chose our materials and the type of box we would attempt: a 50-50 mix of mitred versus finger joined. We spent the following days learning many techniques and expert tricks as we went from planing our boxes to the final finishing.

A few mistakes were made (mostly by me) but they were each transformed into valuable lessons, both in how to avoid them and in repairing common errors. We each came away with

a real appreciation of the art of box making as well as valuable knowledge and instruction to take forward to our next projects. We each came away with a box we could be proud of. Alex also very kindly provided us with a set of written course notes which, I have to say, are excellent.

Overall the course was very enjoyable and instructive, providing us with the knowledge and confidence to aspire to some of Alex's own creations.

by Adrian Amoroso

NSW WWA Annual General Meeting 2016

**7 for 7.30pm on Monday 4 April, at the
Association workshop, at 50A Spring Street, Abbotsford**

This is the Annual General Meeting, but that part of the gathering won't take long, as we also have guest speaker Darren Oates, who will tell us about his chair jig.

Seniors' Week notice: As we did last year, the workshop will be open for visitors on Saturday 9 April, as part of our contribution to seniors' week. All are welcome to visit us. More information on page 7.

Welcome to new members Kevin Brown, Lyndsay Courtois and Clare O'Reilly



Brian Dawson, Chair

Committee members

Chair: Brian Dawson

- 0418 212 496
- brian@valuesystems.com.au

Vice Chair: Frank Duff

- 02 9896 4017 • 0403 821 389
- fwduff@optusnet.com.au

Secretary: David Palmer

- 02 9449 2602
- secretary@woodworkersnsw.org.au

Treasurer: Miko Nakamura

- 02 9805 1775
- treasurer@woodworkersnsw.org.au

General committee members

John Brassell

- 02 9680 3594 • 0414 458 829
- johnbrassell@bigpond.com

Peter Dunn

- 02 4344 7806 • 0410 411 951
- bentneck@bigpond.com

Peter Harris

- 02 9879 3329 • 0419 164 098
- peterh47@ihug.com.au

John Kirkwood

- 02 9958 0726 • 0415 634 680
- johnkirkwood@bigpond.com

Steve Townsend

- 02 9719 8753 • 0411 477 075
- steve@ibis4.com

Assisting the committee

Membership: Gordon Joseph

- 0409 488 919
- membership@woodworkersnsw.org.au

Newsletter/Website: Jo Healy-North

- 0417 667 367 • jhn@bigpond.com

Public Officer: Steve Townsend

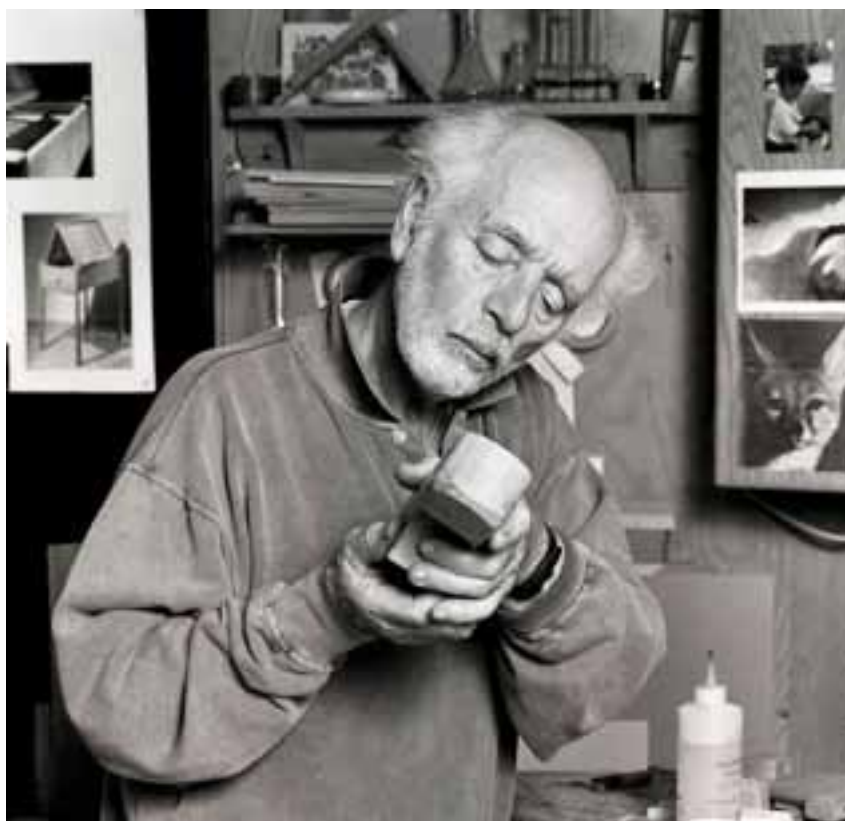
- 0411 477 075 • steve@ibis4.com

If you'd like to join or assist the committee or be more involved in the association, call a committee member!

Life members

Richard Crosland, Phil Lake,
Kim Larymore, Leon Sadubin, Richard
Vaughan and Alan Wale

Chatter *from the* Chair



I have been influenced by a number of great woodworkers over the years. I intend to write occasional pieces on them. They include James Krenov, Sam Maloof and Tage Frid.

James Krenov spent most of his life in America, having had spells in Russia and Sweden.

His philosophic view on woodworking is instructive. Selected quotes distil the essence. Talking about craftsmen, he says:

To the right people it brings joy, and if it were handled better by educators and museums, more craftsmen would be encouraged to try to become aware of wood and become attuned to wood. Wood with lustre, with depth of tone, with delicacy: coarseness – masculine woods, feminine woods. It's a matter of mood and method, and the whole thing becomes a cycle and a way of working, with wood at the beginning of it all.

And about working commercially:

The element of competition has never worried me, because from the start, I suppose, I realised wood contains so much inspiration and beauty and rhythm that if used properly it would result in an individual, a unique object.

His humility is inspiring and his words resonate with a gentleness and truthfulness that is rare. From a basement workshop in Seattle, he began his own "business" and gradually acquired a following that ultimately saw him as one of the best known woodworkers in the world.

He never succumbed to commercialism, always maintaining a humble view of his own work. He was invited to head the prestigious School of Redwoods in California and this led to the development of a new energy and appreciation of craft in the 1970s and 80s.

Continues next page



Brian Dawson's Kernov cabinet: recycled jarrah and recycled oak handles

Perhaps his best known works are his classic cabinet and his small hand plane. Each was a triumph and underlined his love of form, balance and the innate texture of wood. Each hand plane he made was unique and had a special purpose. He said that the plane was the woodworker's violin such was his love of the tool.

Linda Nathan, editor of *Australian Wood Review*, was fortunate to interview him in the last month of his life, in September 2009. The article was republished in AWR # 64 in August 2014. It is easily accessed online and I have just re-read it. She starts off with

Continues next page

Australian Wood Review

Wood Diary

Event listings in the magazine and website for free. Submit your info 5-6 weeks before the magazine goes on sale.

Online news

AWR now produces fortnightly eNewsletters with news and event info. Sign-up at woodreview.com.au to receive them.

Stories

Tell them your story. And tell them what stories you'd like to read in the magazine (or if you'd like to write for them.)

Contact Linda Nathan, Editor

Australian Wood Review
linda@woodreview.com.au
 0434 625 550

AWR is published by
 Yaffa Media P/L
 P 02 9281 2333
woodreview.com.au

AngleMag saw guide

\$75 for members
 \$100 for non-members
 Contact a committee member for more information.
 See page 2 for committee member contact details.

To have your work featured in the newsletter, simply email some photos and a few words about the item (or items) to the editor, Jo Healy-North at jhn@bigpond.com



Brian Dawson's Kernov plane: she-oak

Ringling up James Krenov is, in the world of woodwork, a little like putting a call through to God. Not that he considers himself as such. It's just that everyone else does.

His early work building boats gave him a feel for the curved line, the sweeping, gentle, subtle

line and led to another quote on boatbuilding: *There's hardly a straight line on them, but there's harmony. People think right angles produce harmony, but they don't. They produce sleep.*

Quite a number of years ago, I undertook a course at Sturt

School of Wood in Mittagong to build a Krenov style plane run by Rodney Hayward, the head of School of Woodworking at the Australian National University. It was a fascinating week and the plane is still in regular use in my workshop.

Krenov wrote five books, the best known being *A Cabinetmaker's Handbook*, published in 1976. He had trouble finding a publisher because he was adamant that he wanted a book not about how to do it but about why do it. It was about attitudes towards wood, and tools and craftsmanship and soon after it was published, it was seen as a future classic and so it has proven to be. I would recommend it highly.

He also wrote, *The Fine Art of Cabinetmaking*, *The impractical Cabinetmaker*, *James Krenov: Worker in Wood* and *With Wakened Hands*. There is a website dedicated to him at www.james-krenov.com.



www.heartwoodcreative.com.au

Square Drive Screws

Heard They're Good?

Try Them!



- High Quality
- Easier Driving
- Better Control
- Longer Life
- Heat Treated Steel
- Small Body Diameter
- Sharp Point

Wide Range of Sizes

Introductory Pack

500, #8 and 10 Gauge screws

with driver included

\$46.00 inc. post

SCREW-T-SCREWS

BUY ON-LINE AND SAVE!

www.screwitscrews.com.au

Create from a crate

The bi-annual *Create from a Crate Competition and Exhibition* brings together some of Australia's most talented woodworkers, designers and makers who make a beautiful object or piece of furniture from two rough and discarded timber pallets. The exhibition provides an engaging way to shine a light on the environmental impact of timber packaging waste. Below is the first in an ongoing series of the editor's deeply subjective selection of the best entries, the images of which are brought to you by, and with many thanks to, Melbourne based freelance guest photographer Guy Dimmick, who kindly attended the exhibition opening in Dandenong. Guy also provided a catalogue of the exhibition, from which comes the information about each piece.



Low table from reclaimed crate timbers. H 400 x 1,000 mm square

Nita Robson

Nita began making furniture later in life. At a crossroads, she applied to study design at TAFE. She spent a numbers of years acquiring the skills require to design and make furnituer and small products.

Nita opened her own workshop in 2011 in Sawtell, NSW, trading as *Rings of Times*. Her pieces have clean lines and simple forms, and she believes the most responsible way to use precious resources is to use sustainable materials in pieces which will endure the tests of time, including fads, fashions and the coming generations.

First launched in 2002, the Victorian Woodworkers Association in partnership with Waste Converters Recycling have run six highly successful competitions. This year over 40 skilled furniture makers, sculptors, turners and carvers from around Australia have taken up the challenge to produce a prize-winning design or artwork from just two recycled wooden pallets.

Every year hundreds of thousands of crates and pallets containing goods and components from all over the world are imported into Australia. Much

of this packaging ends up in landfill, and it is estimated that over 500,000 tonnes of timber waste is disposed of each year in Victoria, enough to fill the MCG 1.5 times.

The exhibition was conceived by Ward Petherbridge from Waste Converters Recycling as a way of educating the community about wood-packaging waste. The site processes around 20,000 tonnes of timber waste annually and much of the timber processed is from exotic foreign timber species. Some of these include oak, cherry, maple and elm. On-site his company

repairs and re-purposes a significant volume of timber pallets, but a large proportion still gets pulverised into low-grade mulch.

Ward approached the Victorian Woodworkers Association to collaborate on the Create from a Crate Competition and jointly they aim to change people's attitudes towards timber waste. The competition provides the incentive for individual wood designers and crafts people to design and construct functional or artistic objects from this often overlooked timber resource.

Source: createfromacrate.com/about/

More Create from a crate

Brian Dawson

Our Chairperson, Brian Dawson, well known to most of the membership, is a semi-retired management consultant, who has worked with wood for 25 years. And while he is mainly self taught, three years ago he spent 12 weeks at Sturt School for Wood in Mittagong, under the tutelage of Toby Muir-Wilson, which greatly

advanced his understanding and skills.

The wine storage cabinet has two drawers, which can be used to store wine glasses or other wine related objects. The main compartment is made from 18 curved ribs with keyed joints. Each was cut on a bandsaw. There are six curved oak rib sections capable of holding seven wine bottles. The gentle curve ensures that each bottle will slide to the

bottom of each section. The top is solid maple, 28 mm thick. The decorative curved skirting and frieze are relief but with a router and finished with water-based paint. The finish to the remainder is shellac and oil. More at flickr.com/photos/brian_dawson and briandawson.wordpress.com

*Wine storage cabinet from maple and American oak:
H 870 x W 790 x D 390 mm*





Agents for *Hegner* German light machines, *Stubai* Austrian bench and carving chisels, *Gyokuchō* Japanese saws, *Marples* British layout tools, *Renaissance* British Museum Standard wax, *Joint Genie* British doweling jigs, *Brusso* American box and cabinet brassware *White Crocodile* German polishing brushes and hundreds of other quality tools, equipment items, book and video titles.

PO Box 1229 Mona Vale NSW 1660
Ph: (02) 9979 7797 Fax: (02) 9979 8062
www.thewoodworks.com.au

Seniors Festival 1 to 10 April 2016

Free event: Learn about woodworking as a hobby
10 am to 4 pm, Saturday 9 April 2016

Contact: Steve Townsend 0411 477 075 steve@ibis4.com

Venue: Woodworkers Assoc. of NSW workshop,
50A Spring Street, Abbotsford.

Take a look at what you can do with woodworking. Make a jewelry box, a bookshelf, a table or chair. What tools will you need? Who can teach you what to do? What are the costs involved?

2016 Lane Cove Exhibition

Your committee has agreed to hold another exhibition at the Lane Cove Gallery.

The 2016 exhibition will be held late October to early November. We look forward to entry submissions.

Application forms will be available on our web site as soon as dates are finalised. This is a great opportunity to show members' works and we would urge as many of our members as possible to enter the exhibition.

We have had two successful exhibitions in the past two years and we want this one to equal or surpass our previous ones

Full information will be available on our website very soon.



Triton – Australian for 'passionate about woodwork'

Since the original Workcentre was born in Australia forty years ago, Triton has grown a committed following of woodworkers around the world who have a passion for innovation and precision. You can find out more about these inspirational makers, shapers and creators by watching their stories on our blog at tritontools.com.au

With more than a hundred products available to support your creative adventure, visit us in store at Masters or at one of our specialist outlets and see how this Australian classic can awaken the woodworker in you.



Engineered Precision

tritontools.com.au



Finishing for the recreational woodworker

Take the mystery out of finishing furniture. Learn how to prepare and finish a wooden surface.

Increase your knowledge of the different materials and tools used. You will learn how to finish with: **oil, shellac and water-based polyurethane**

For bookings
call **0425 217 269**, or
nik@
nikteplyrestorations.com.au



Boutique Timbers

High quality furniture timbers. Slabs up to 1 metre wide, boards, burls, burl slices, blocks, hardwoods, softwoods. Mackay cedar, Australian red cedar, Rosewood, snakewood, Queensland maple, Camphor Laurel, Huon pine, bluegum, redgum, greygum, flooded gum, tallowood, blackbutt, blackwood, pencil cedar, Hairy oak, N and S silky oaks, and more. Cheap Camphor boards and slabs for benches, bars, tables, cutting boards or food display boards.

Delivering to Newcastle, Central Coast and Sydney Metro. Small orders can be collected from Cremorne, Maccas Heatherbrea or Wyong.

Boutique Timbers 256 Spokes Road, Ballengarra

16km west of Pacific Highway, turn onto Rollands Plains Road at Telegraph Point. Follow road for 16km, turn left at Spokes Road and travel 2.5km of gravel road. Visitors welcome from 7 to 7, 7 days a week.

Phone Mal or Greg - 02 6585 8296 or 0416 096 827
Sydney enquiries - 0407 613 002
boutiquetimbers.com.au

carbatec
THE HOME OF WOODWORKING

SEE CARBATEC AT THE
**CANBERRA
TIMBER &
WORKING
WITH WOOD
SHOW**
EXHIBITION PARK
CANBERRA
6-8 TH NOVEMBER 2015

- See a selection of machines on display including advice from our machine experts
- See live handtools demonstrations with the opportunity to try some of the tools
- Purchase some of our most popular products at a mini retail stand

**Member's
Discount!**

5% off*

**purchases made in-store
at Carbatec® Sydney.**

Proof of Woodworkers Association NSW membership must be presented in-store at Carbatec® Sydney.

*Offer excludes Festool products, SawStop, purchasing of gift cards & freight

**VISIT OUR SYDNEY STORE AT:
113 Station Rd, Auburn NSW**

OR PHONE ORDERS FREE CALL: 1800 658 111

Subscribe to our mailing list for specials, events & updates:
www.carbatec.com.au/stay-in-touch



www.carbatec.com.au

*If your listing or
advertisement is no
longer current,
or needs amending,
email me,
Jo Healy-North,
jhn@bigpond.com
(or call me on
0417 667 367)*



ANAGOTE PTY LTD

Quality timber stockists

144 Renwick Street
Marrickville, NSW 220

P: 02 9558 8444, F: 02 9558 8044

anagote@hotmail.com

Monday to Friday: 8am - 4pm

Saturday: 9 - 11:30am



TREND TIMBERS
SPECIALISTS IN FINE WOODS

TIMBER, TOOLS AND MACHINERY SALES.
Visit our all new purpose built showroom.

NSW distributors of Jet and Powermatic
woodworking machinery. Over 80 species of
timber for cabinet & furniture making, joinery,
boat building, wood carving & turning.



15 Railway Rd North, MULGRAVE 2756

Ph: 02 4577 5277 Fax: 02 4577 6846

Email: sales@trendtimbers.com.au

www.trendtimbers.com.au

Liberon Products Australia Pty Ltd



Liberon products have been known around the world since the early 1900's initially created in France. They have an enviable reputation for high quality restoration and the finishing of wooden furniture and antiques.

We were known previously in Australia as Liberon Enterprises, but with a new owner and new name, we are no longer at Fyshwick in the ACT.

For a full colour catalogue, email Carol at address as below.

Woodworkers' NSW members received our products at wholesale prices, plus postage/freight.

PO Box 306, Eumundi QLD 4562

P 07 5471 1028

carol@liberon.com.au

www.liberon.com.au

The Sydney Woodcarving Group

The SWG meets regularly at four locations. Beginners are welcome.
Tools and timber supplied for learning projects. Groups meet at:

Southside (Lilli Pilli): First Saturday of the month and one weekday evening

Epping: Second and fourth Wednesday of the month

Chester Hill: Second Saturday of the month

Shellharbour: First Monday and third Saturday of the month.

For more information and location details, phone Rosemary Mackie on 0419 607 489 or visit www.sydneymwoodcarving.org.au



- Nikolaus Teply

Restorations

Suite 6.02, Precinct 75
70 Edith Street

St Peters NSW 2044

0425 217 269

nikteplyrestorations.com.au
nik@nikteplyrestorations.com.au



Terry Gleeson
maker of
Fine Furniture



- Terry Gleeson's

School of Woodwork

1191 Old Nothern Road
Middle Dural NSW 2158

P: 02 9651 1012

F: 02 9651 1341

thechairmaker@optusnet.com.au



- Richard Crosland's
**School of Fine
Woodworking**

Learn with the master
Richard Crosland's school
provides small, hands-on
classes for students of all
levels. The friendly, creative
atmosphere fosters progress
and many beautiful pieces are
the lasting result.

All tools are provided and
work in progress can be
stored at the Alexandria
workshop.

Call Richard at the school
02 9313 4142, or visit
www.crosland.com.au




WOODIES
LOVE US, THIS
WE KNOW



Feed-N-Wax Penetrates and feeds dry wood leaving a superior natural wax finish.

Orange Oil This was the first orange oil ever made for polishing and sealing wood and it remains by far the best product of its type available.

HOWARD Restore-A-Finish
Remove heat rings and scratches from furniture finishes instantly and permanently.

HOWARD PRODUCTS
1800 672 646
www.howardproducts.com.au

Now you can
buy ONLINE
straight from
our website

STURT
AUSTRALIAN CONTEMPORARY CRAFT

Course in Fine Furniture Design and Technology

For enrolment information contact Dale Dryen
Sturt School for Wood Coordinator
P: 02 4860 2083 or e: ddryen@sturt.nsw.edu.au

Of possible interest to some . . .

Christophe Living is an established French style Furniture and interior design business with a shop in Double Bay and a warehouse workshop (250 sqm) in Padstow (near Bankstown). *Christophe Living* sells high-end Italian imported Louis furniture. We also offer custom-made timber furniture (and with a painted finish).

We are currently looking for an experienced cabinet-maker with both solid timber and mixed MDE/pine construction skills. Ideally, also skilled in spray and hand painted finishes. The arrangement includes your use of the existing workshop for your own work/clientele and orders as they come in from our client base.

You would need to bring or purchase some equipment as the workshop does not currently have a planer / thicknesser and there maybe a need for a larger saw. Any equipment and tools you bring remain your property. Send your CV and photos of work you have made fully by yourself.

Contact JC Burckhardt

Phone 0412 744 711 || email jc@christopheliving.com || www.christopheliving.com

Hammer®

Perfect woodworking.

Big on Performance. Easy on the Budget.

Perfect for applications which require high levels of precision and robust enough to contend with Challenging professional demands.

N3800 Bandsaw

- Large wheels (Ø 380 mm)
- Cutting height 310 mm
- Rip capacity 360 mm
- Tilttable table

From 1,964.⁵⁰
\$ excl. GST



FELDER-GROUP AUSTRALIA

NSW Emu Plains, Email: admin@felder.net.au
WA Malaga, Email: sales@krengineering.com.au
QLD Darra, Email: info@felderqld.com.au
VIC Melbourne, Email: info@feldervic.com.au
SA Adelaide, Email: info@henryeckert.com.au
www.hammer-australia.com

Immediate-Info:

NSW (02) 4735 1011
WA (08) 9209 3055
QLD (07) 5543 5599
VIC (03) 9018 8346
SA (08) 8241 7777



A3 26 Planer Thicknesser

- Remarkably user friendly
- Allows for rapid retooling
- Solid cast iron planer tables
- 3 knife quick-change self-setting cutterblock system

From 3,479.²⁰ \$ excl. GST



C3 31 Combination machine

- Surface planing width 310 mm
- 3 knife quick-change self-setting cutterblock system
- Saw blade tilttable 90°-45°
- Solid cast iron tables and units
- Quick change-over times

From 10,024.⁶⁰ \$ excl. GST



K3 basic Panel Saw

- Solid cast iron tables and units
- Professional rip-fence with round bar guide
- Extremely durable

From 5,113.³⁰ \$ excl. GST

* Optional: all planer/thicknessers are also available with the new Silent-POWER spiral knife cutterblock. Valid till 30th April 2014 or while stocks last