

84TF Fertiliser silo

CONSIDERATION: A soil test to assess the soil bearing capacity meets a minimum 300kPa.
For further infromation please contact GE Silos.

SILO DETAILS:

Silo type:Ring Beam
frame support

Weight: 84 tonnes

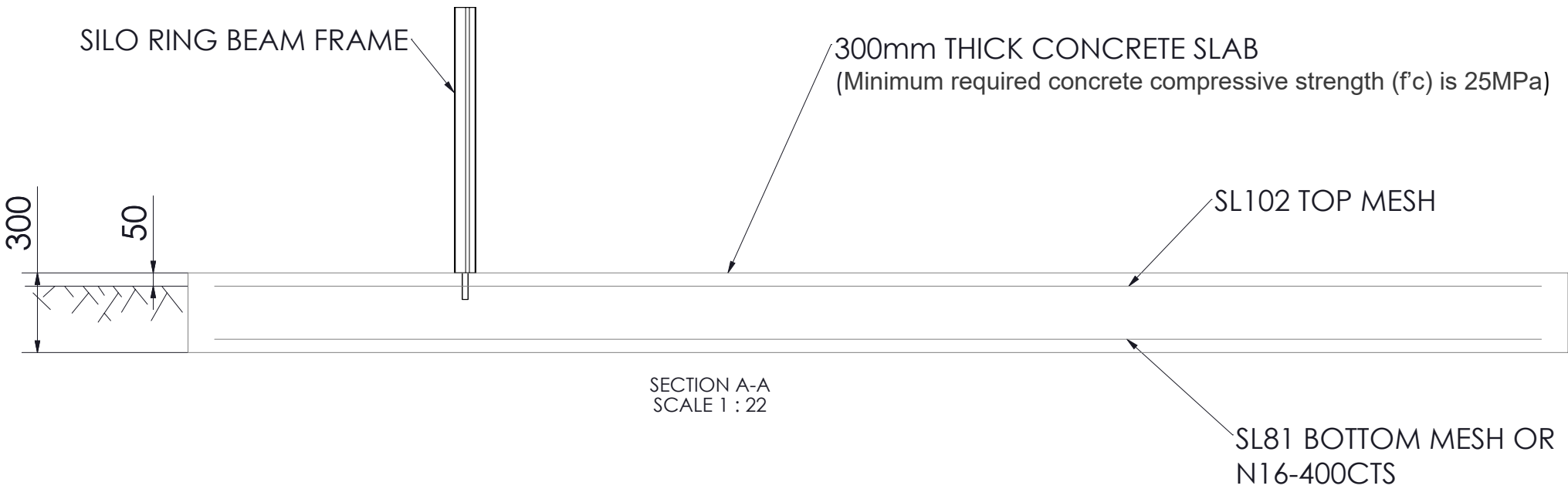
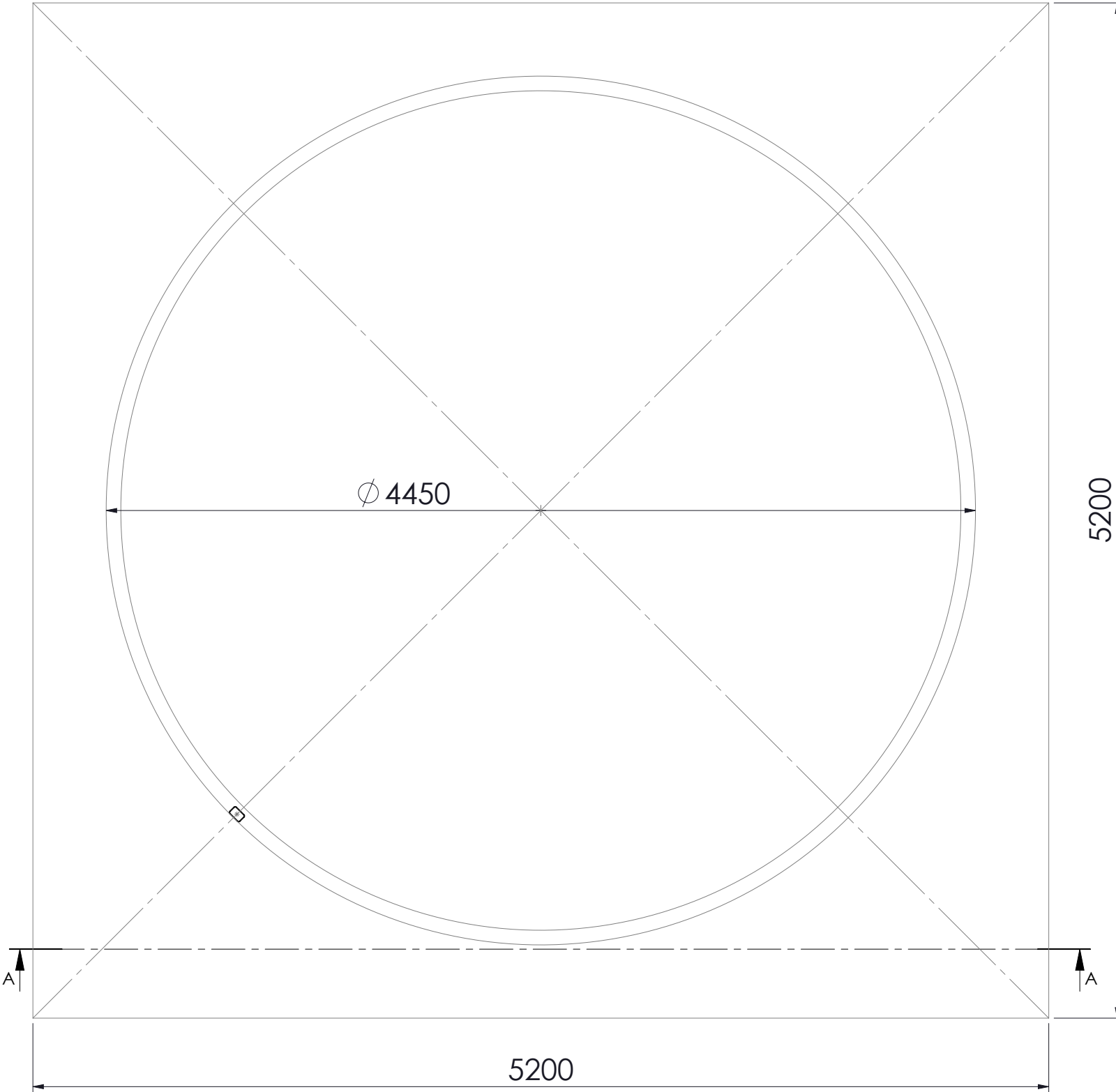
Silo dia: 4.45Ø

Footing: 300mm thick
Concrete slab

NOTE:

-Pad footing has been
designed for a minimum
end bearing pressure of
300KPa.

-All debris and loose
material to be removed
and replaced with 95%
compacted fill as a
minimum.



REV.	DESCRIPTION	DATE	DRW	REQ
A	NEW DRAWING	15/04/22	AD	-

GE

SILOS

Est. 1978

GENERAL TOLERANCES
UNLESS SPECIFIED:

LINEAR:
0±0.25m
0.0±0.1mm
0.00±0.05mm

ANGULAR:
0.0±0.50°
0.00±0.20°

ALL DIMENSIONS IN
MILLIMETERS DO NOT SCALE

THIS DRAWING IS THE
CONFIDENTIAL PROPERTY OF
GE SILOS

WEIGHT 7.2 kg

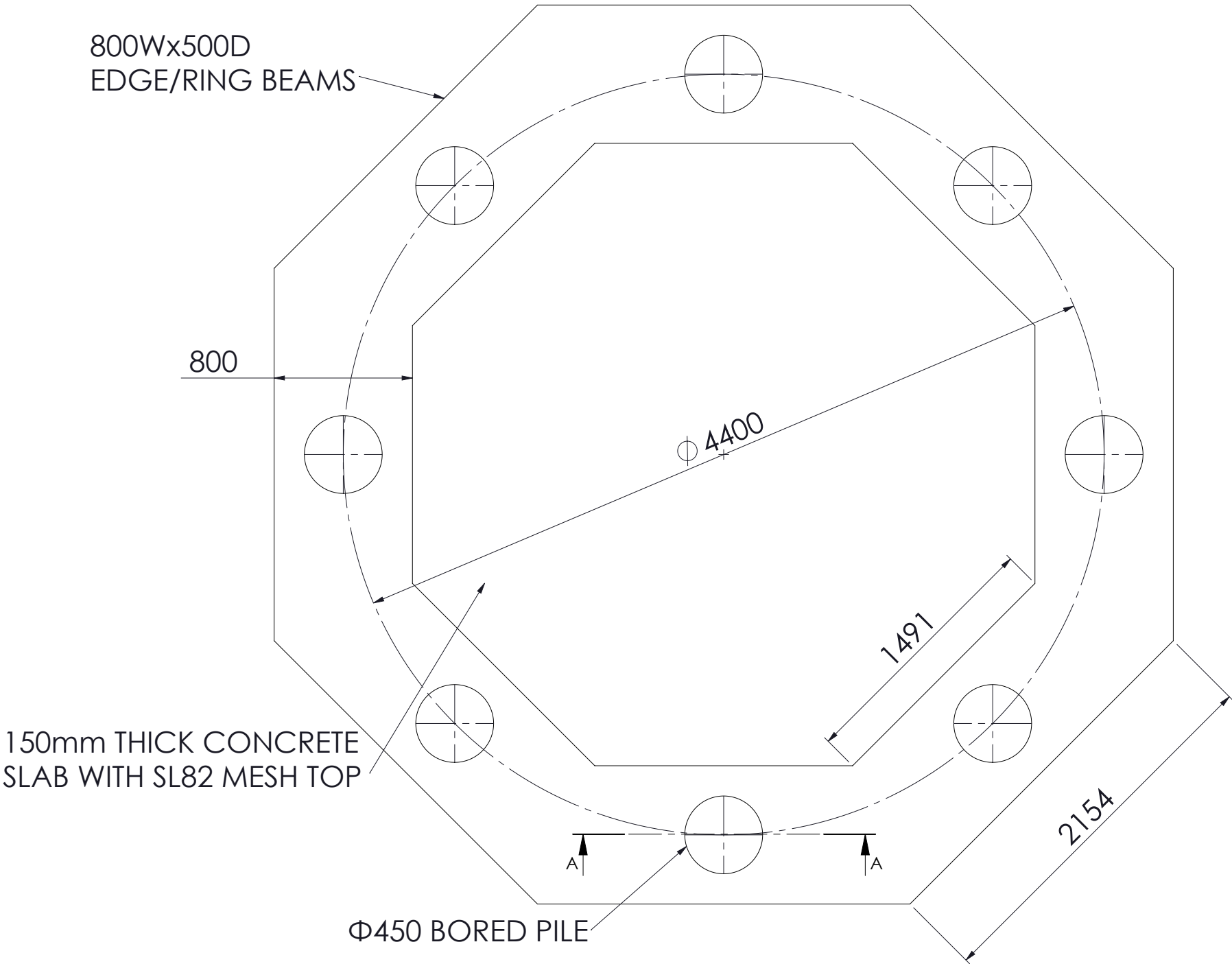
TITLE

GE SILOS
84TF FOUNDATION
-MINIMUM SOIL BEARING CAPACITY 300KPa

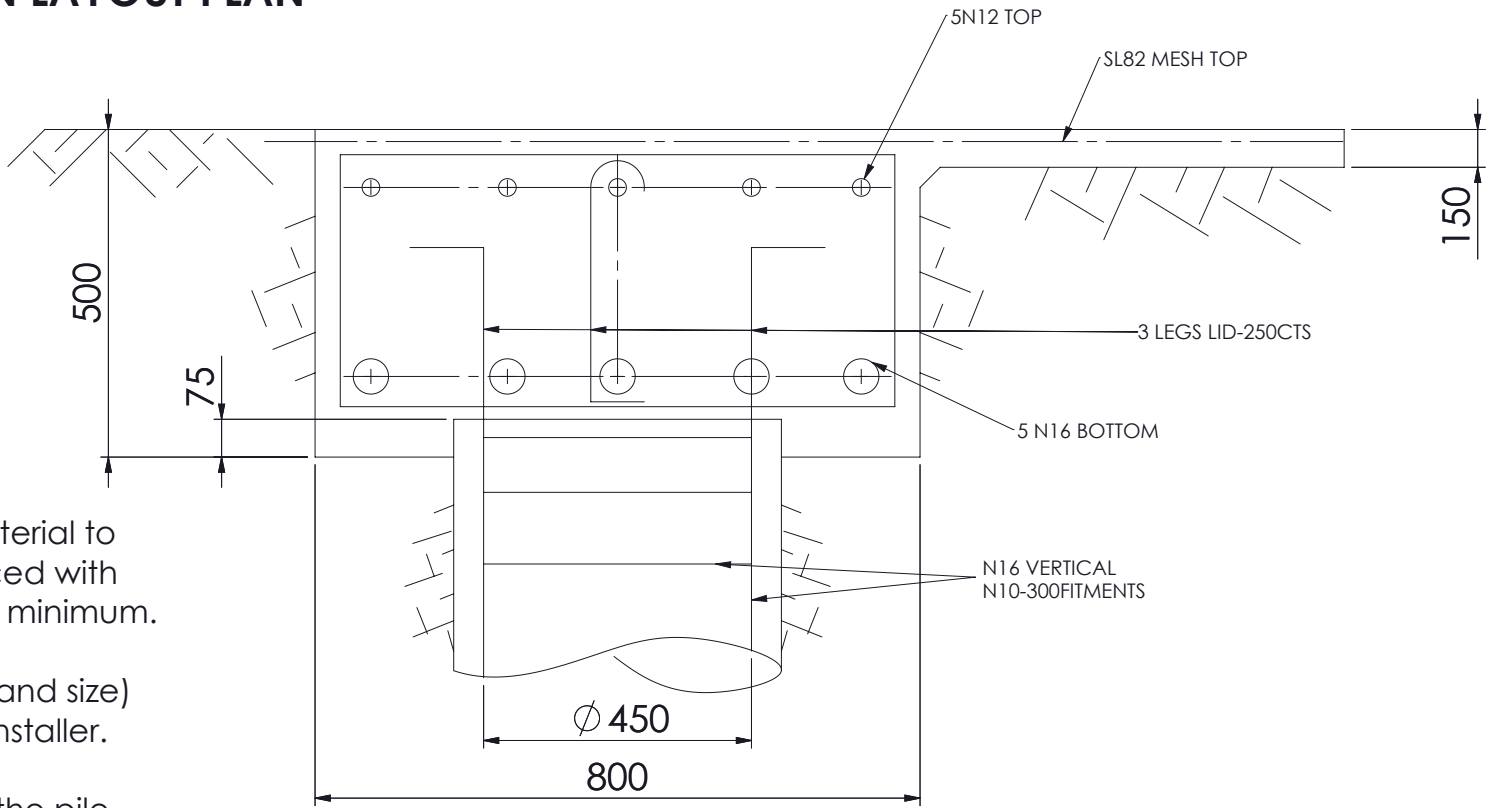
DRW	AD	15/04/22	DRAWING No.	117801 A	REV	A	SHEET SIZE	A3
CHK	MW	15/04/22	117801 A	SCALE 1:27	PH: 0354 322 384	A		

84TF Fertiliser silo

CONSIDERATION: This slab is to be used when the soil bearing capacity is found to be less than 300kPa. For further infromation please contact GE Silos.



PILE FOUNDATION LAYOUT PLAN



SECTION A-A
SCALE 1:10

NOTE:

- All debris and loose material to be removed and replaced with 95% compacted fill as a minimum.
- Pile design (pile length and size) shall be verified by the installer.
- It is the responsibility of the pile installer to determine ground conditions for each site.

REV.	DESCRIPTION	DATE	DRW	REQ
A	NEW DRAWING	05/05/22	AD	-

GENERAL TOLERANCES UNLESS SPECIFIED:	
LINEAR:	ANGULAR:
0 ± 0.25m	0.0 ± 0.50°
0.0 ± 0.1mm	0.00 ± 0.20°
0.00 ± 0.05mm	
WEIGHT 1558.8 kg	

ALL DIMENSIONS IN MILLIMETERS DO NOT SCALE	
THIS DRAWING IS THE CONFIDENTIAL PROPERTY OF GE SILOS	

TITLE		GE SILOS	
84TF Foundation		-PILE FOUNDATION FOR SOIL BEARING CAPACITY LESS THAN 300KPa	
DRW	AD	05/05/22	DRAWING No.
CHK	MW	05/05/22	117901 A
117901 A		SCALE 1:30	PH: 0354 322 384
REV	A	SHEET SIZE	A3