



Power in Numbers

Norm Suchar
Office of Special Needs Assistance Programs
October 2017



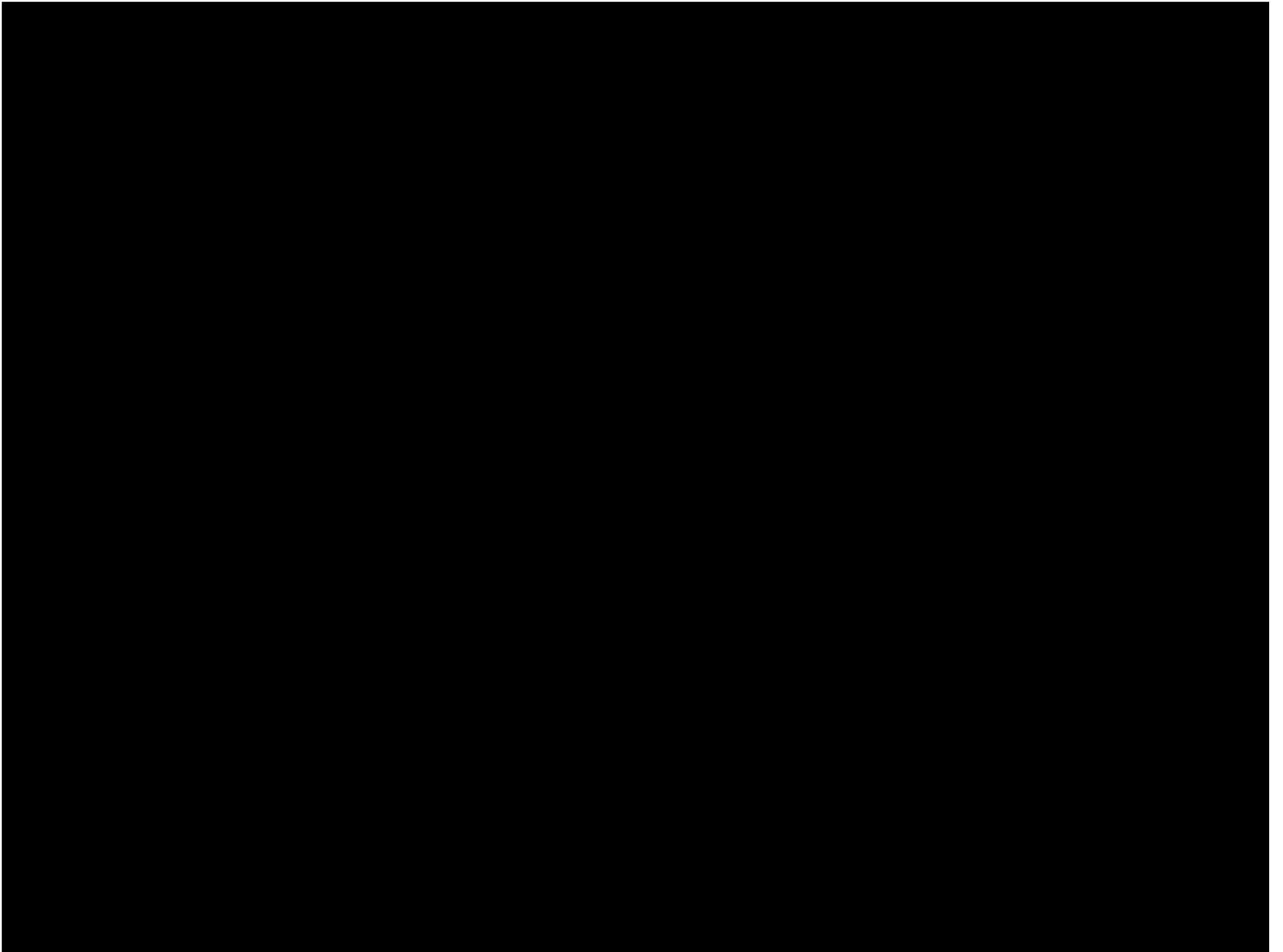
Updates

How should
we spend
\$1,000,000?

What should
we stop
funding?

Why does it
take so long
to house
people?

Who should I
be serving
right now?

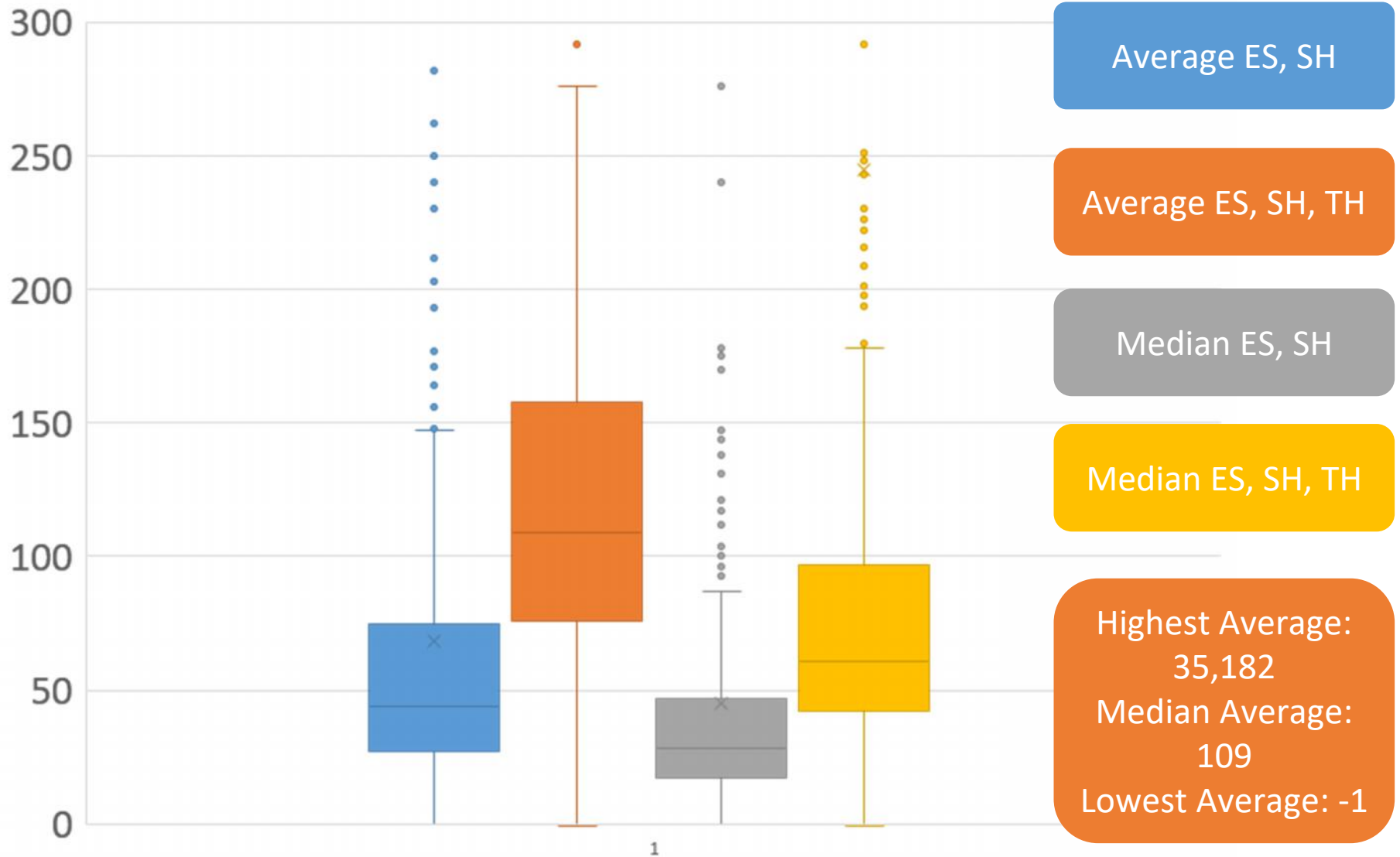


@ ! \$



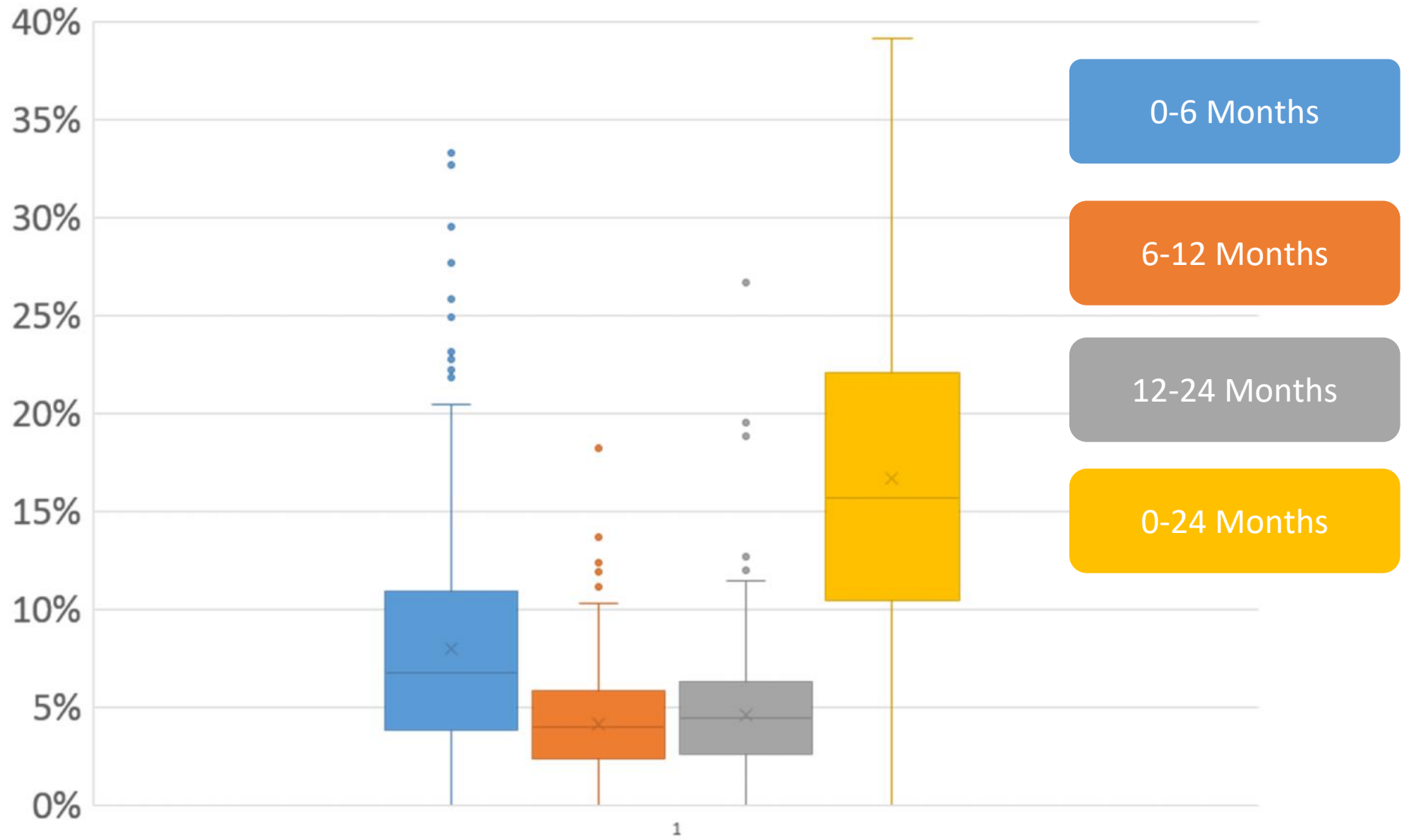
FY 2015 System Performance

Average and Median Length of Time Homeless

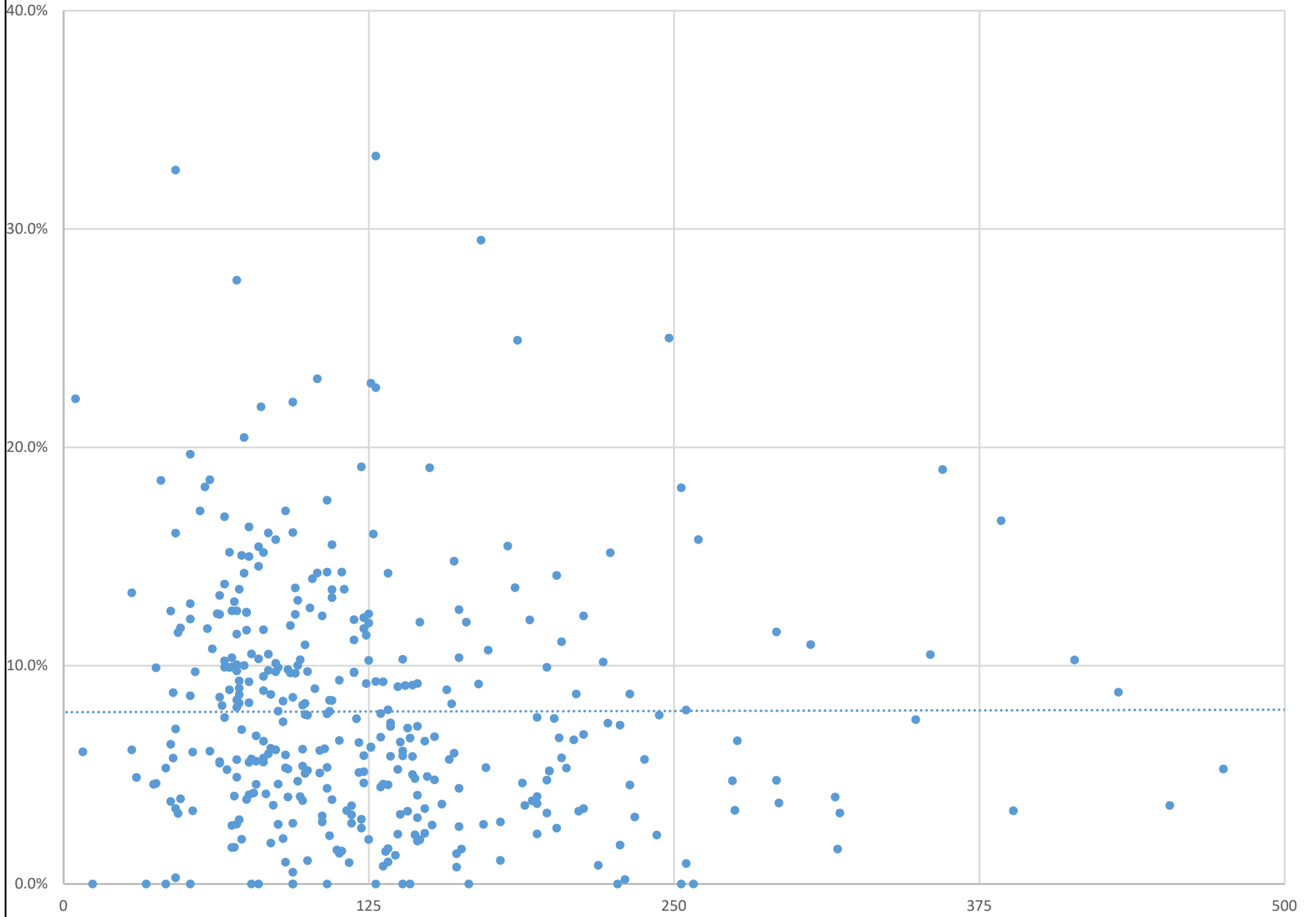


Box and whisker plots work like this: The line in the lower middle of the colored box is the median. The box goes from the 25th percentile to the 75th percentile. The lines above and below the box go out to the maximum and minimum reasonable value. The dots above them are the outliers. Outliers are defined as more than 1.5 times the interquartile range above the 75th percentile.

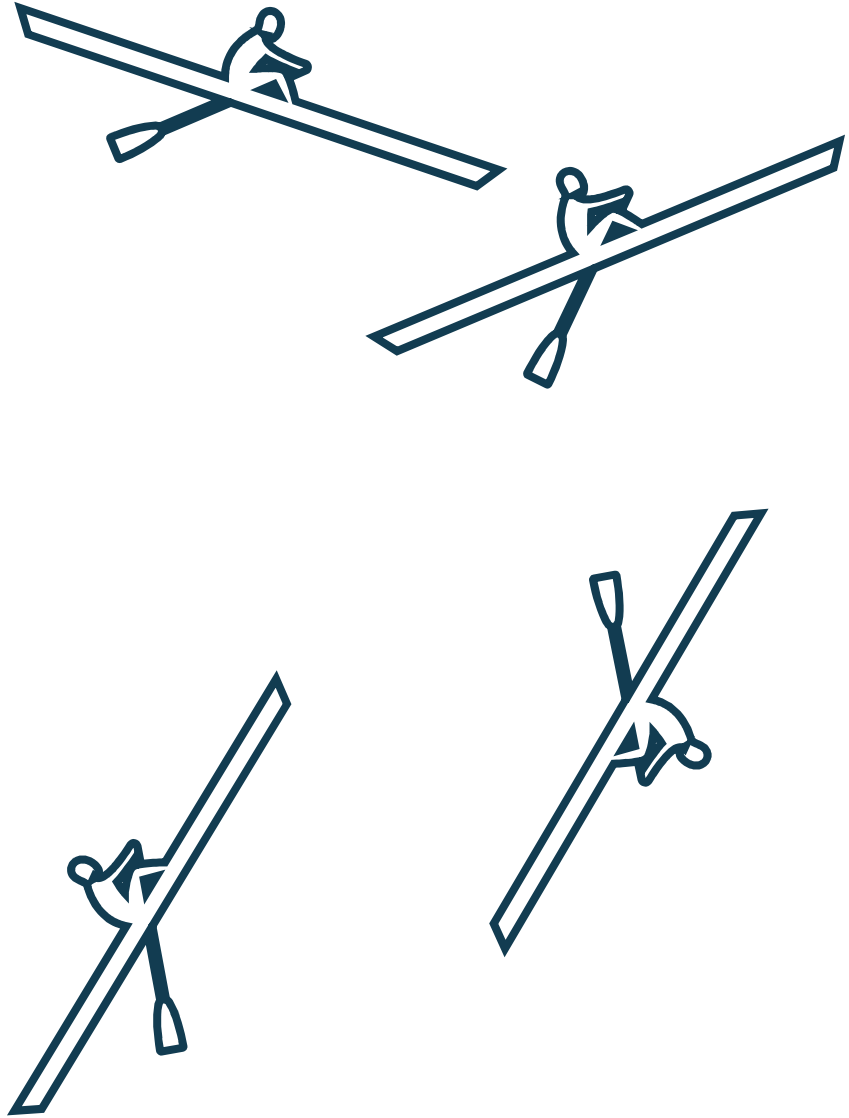
Returns to Homelessness

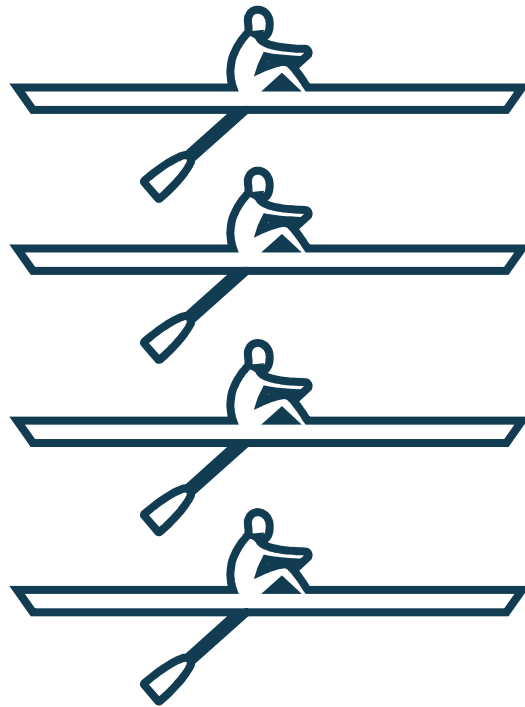


Length of Time Homeless (x-axis) and Returns to Homelessness (y-axis)



@





@city.gov

@faith.org

@business.com

@lived_experience.net

@funders.org



Develop Policies and Procedures



Work with Corrections Department



Do Timesheets



Publish Outcomes Report



Submit CoC Application

\$

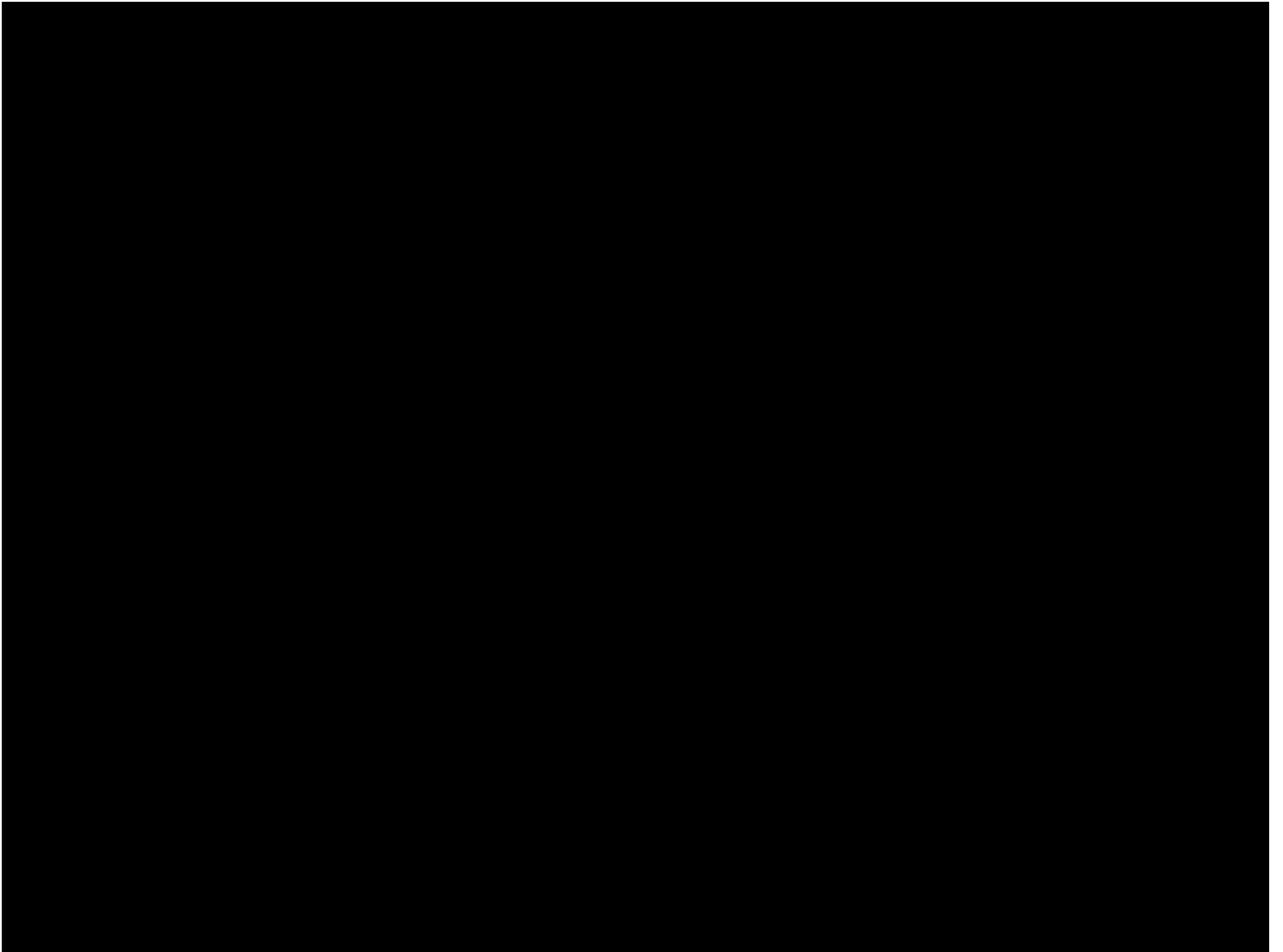
[(outcome)-(expected
outcome)]

\$

\$

[(30 days)-(100 days)]

\$5,000



HUD



Data