

# Tracking Progress Towards Ending Youth Homelessness Together

**Margaret Woley** (*she/her*) &  
**Keianna Pierre Louis** (*she/her*)



Increasing Capacity &  
Building Connections:  
**Bridging to the Future**



Importance of Equity  
Data

National  
Initiative

Community-  
Level

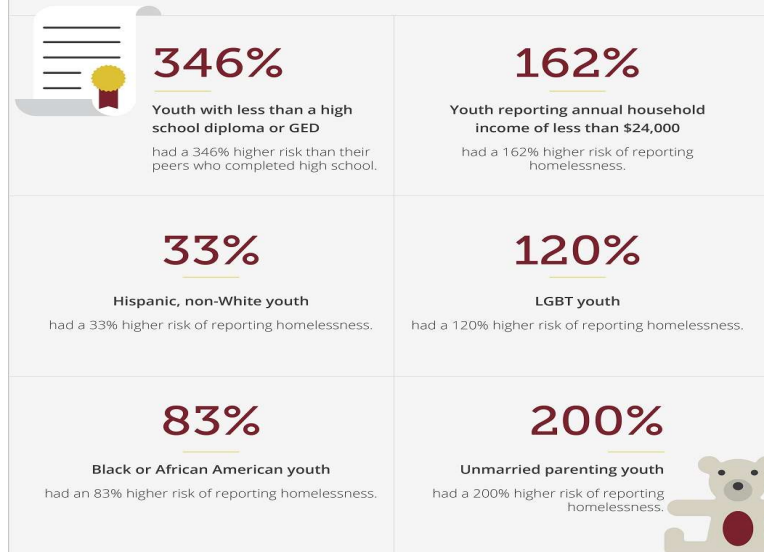


# Why focus on LGBTQ+ and Youth of Color?

Voices of Youth Count: <http://voicesofyouthcount.org/>

**Figure 5.** Youth at Greater Risk of Experiencing Homelessness

Statistics describe the relative risk of certain groups of young adults, 18-25, having reported "explicit homelessness" in the last 12 months.





# A Way Home America





# Community Dashboard

- Creating a common language to talk about progress towards ending youth homelessness
- Differences in policies and practices among communities drive differences in the data
- Specifically looking at data about disproportionality of LGBTQ youth and youth of color



## Dashboard Communities

- Anchorage (AK)
- Austin (TX)
- Balance of State (OH)
- Balance of State (WA)
- Chicago (IL)
- Cleveland (OH)
- El Paso County / Colorado Springs (CO)
- State of Connecticut
- Hennepin County (MN)
- Houston (TX)
- Los Angeles (CA)
- Miami (FL)
- Multnomah County (OR)
- Palm Beach County (FL)
- Philadelphia (PA)
- Pima County (AZ)
- San Francisco (CA)
- Tulsa (OK)

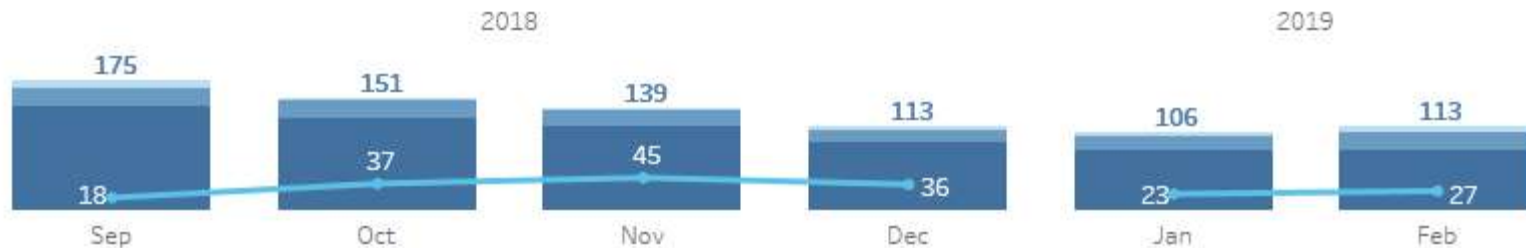




# Community Dashboard

<http://awayhomeamerica.org/>

In February 2019, 113 youth were experiencing homelessness; 27 moved off of the by-name list.



In Palm Beach County the By-Name List includes youth ages 18 to 24 who are experiencing homelessness. All youth are assessed and prioritized based on the TAY-VI-SPDAT or VI-F-SPDAT scores.

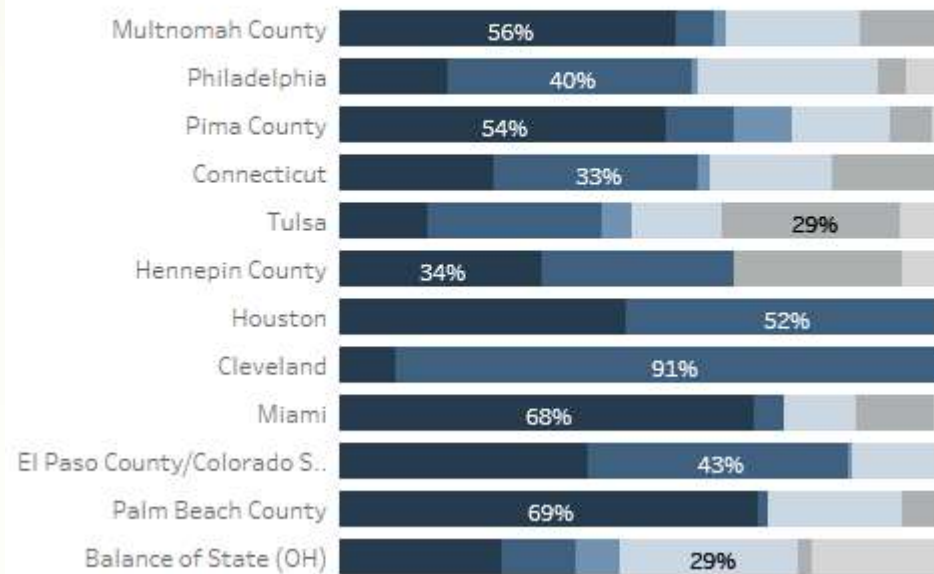


# Peer Learning View

## YOUTH EXPERIENCING HOMELESSNESS

*Goal: No youth are unsheltered. Youth are homeless for less than 30 days.*

Where do youth on the BNL report sleeping most frequently?





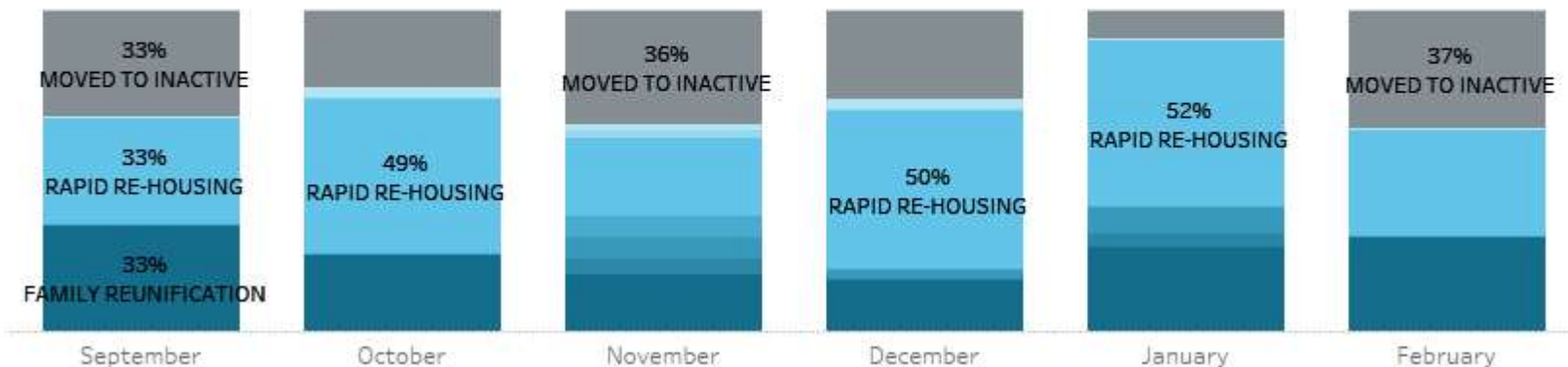


## Community-Level View

### YOUTH EXIT DESTINATIONS

*Goal: Youth leave homelessness to permanent housing.*

37% of youth left the homeless system to **inactive status**.





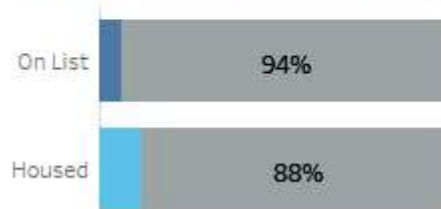
# Centering Youth of Color & LGBTQ+ Youth

## FOCUS POPULATION PROPORTIONALITY

*Goal: LGBTQ+ youth and youth of color access housing in at least the same proportion at which they experience homelessness.*

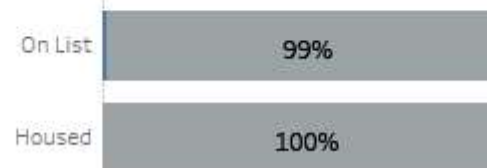
### SEXUAL ORIENTATION

Of youth on the by-name lists, 6% are LGBTQ+, but 12% of those housed are LGBTQ+ youth.



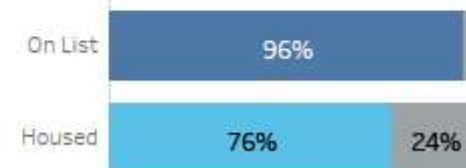
### GENDER IDENTITY

Of youth on the by-name lists, 1% are gender-diverse youth, but None of those housed are gender-diverse youth.



### RACE/ETHNICITY

Of youth on the by-name lists, 96% are youth of color, but 76% of those housed are youth of color.





# Measuring Disproportionality

- Compare to overall population
- Compare to population of people living in poverty (as done in new HUD CoC Analysis Tool)
- Dig in to experiences in the system
  - Length of time homeless
  - Referral to housing programs
- Look at rates of return to homelessness

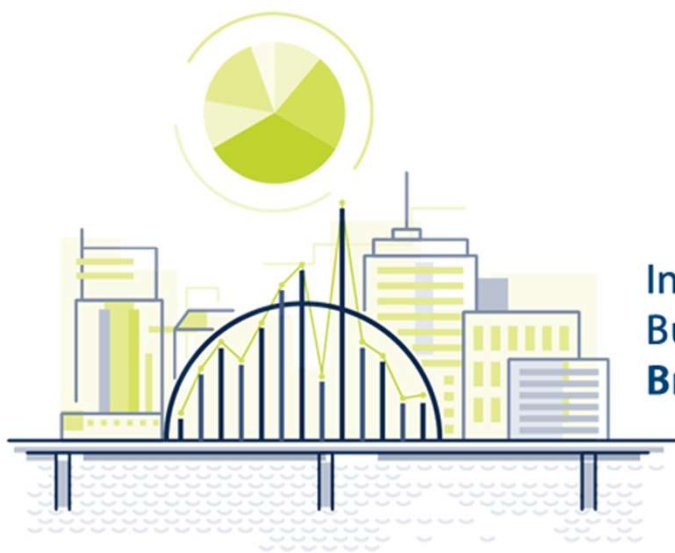


## Up Next

- Alignment with finalized USICH Criteria & Benchmarks for ending youth homelessness
- Continued focus on data related to youth of color and LGBTQ+ youth
- Add qualitative data collection to our data strategy

# Palm Beach County's Youth Population

## How Data is Driving Youth Housing in Palm Beach County



Increasing Capacity &  
Building Connections:  
**Bridging to the Future**



## Housing Youth in Palm Beach County

Keianna Pierre Louis  
Palm Beach County, FL  
Contract/Grants Coordinator  
Email: [Kpierre@pbcgov.org](mailto:Kpierre@pbcgov.org)  
Contact Number: 561-355-4776

- Youth Rapid-Rehousing Lead
- Manages and Budget Youth Rapid-Rehousing (RRH) Funding
- Rapid Rehousing is for youth is a year
- Youth with Income pay a decreasing rental subsidy
- Youth with no income pay \$25/month towards rental
- Shared Housing for Individual Youth





## Point in Time Youth Data

- 1<sup>st</sup> Year Palm Beach County (2017) counts youth in Point in Time Count
- Youth Specific Outreach Teams to Count Youth

### Results

#### Youth Individuals

63 Unsheltered

14 Emergency Sheltered

22 Transitional

Total: 99 Individual Youth

#### Youth Families/Households

1 Unsheltered Household

9 Emergency Shelter Households

8 Transitional Households

Total: 18 Households/42 Persons

Total: 141 Unaccompanied and Parenting Youth



## **Continuum of Care (CoC) Changes**

**Based on 2017 Youth PIT Data and 100- Day Challenge**

- Palm Beach County has one Homeless Resource Center  
60 Emergency Shelter Beds (20 Men; 20 Women; 20 Youth)
- Youth By-Name and Acuity List
- Rapid Rehousing (RRH) for Youth
- Permanent Supportive Housing (PSH) for Youth
- Program Director for Youth
- Youth specific Case Managers
- Monthly Case Conference
- Youth Partnerships Increase on CoC



# How Palm Beach County Discussed Priority for Youth

## Forgotten Youth: LGBTQ+ and Youth of Color

- Facilitate greater community awareness of issues contributing to LGBTQ youth homelessness and local efforts to address these issues (e.g., through community forums).
- Facilitate greater local collaboration and systems change among stakeholders to bridge gaps through expanded communication and sharing of best practices.
- Improve the quality and use of data on sexual orientation and gender identity. (Beginning with our 2017 PIT Count)
- Improve understanding about risk and protective factors for homelessness, and related tools for screening and assessing youth.
- Improve the quality of interventions to prevent LGBTQ youth homelessness.



# Palm Beach County Youth Dashboard Data

Using AWA Dashboard to Track Measures

In Palm Beach County the By-Name List includes youth ages 18 to 24 who are experiencing homelessness. All youth are assessed and prioritized based on the TAY-VI-SPDAT or VI-F-SPDAT scores.

Except for exit destinations, all charts reflect data for currently selected month only.  
Due to changes in data collection, sexual orientation and gender identity details are not available before April 2018.



tableau

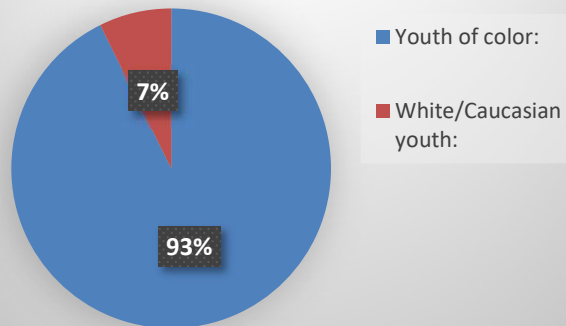
Navigation icons: back, forward, search, etc.



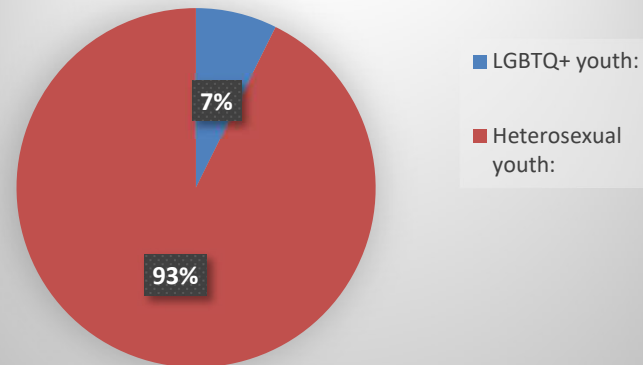
# How long have we been tracking Youth Data?

Palm Beach County has tracked youth data for approximately two years.

Youth By-Name List: Outdoors or Place  
not meant for habitation on



Youth By-Name List:





# How does Palm Beach County Prioritize Youth?

TAY VI - SPDAT	
Score	Acuity
0	0
1	1
2	2
3	3
4	4
5	5
6	6
7	7
8	8
9	9
10	10
11	11
12	12
13	13
14	14
15	15
16	16
17	17

LGBTQ+ ; Gender Identity and/or Sexual Orientation	
Identified	Acuity
No	0
Yes	1

LoH (Current Episode)		
Min	Max	Acuity
1 Day	5 Days	1
6 Days	10 Days	2
11 Days	15 Days	3
16 Days	20 Days	4
21 Days	-	5

Exposure to Violence Home/Community	
Description	Acuity
No	0
Yes	3

Person of Color	
Description	Acuity
No	0
Yes	1

Chronic Mental Illness	
Identified	Acuity
N/A	0
Treated	2
Untreated	5

Chronic Health (Medical) Issues	
Acuity	Description
0	None
2	No
5	Yes





# How does Palm Beach County Prioritize Youth?

- TAY VI-SPDAT Score: Value ranges from 0 – 17 possible points
- Chronic Mental Illness: 0 = Clients with no chronic mental illness, 2 = Clients with a treated chronic mental health illness, 5 = Clients with an untreated chronic mental health illness.
- Exposure to Violence Home/Community: 0 = Clients who haven't had any exposure to violence in their home or community. 3 = Clients who have had exposure to violence in their home/community.
- LGBTQ+: Clients who identify as LGBTQ+ are given 1 point.
- Person of Color: Clients who identify as a person of color are given 1 point.
- Length of time for current episode of Homelessness: 1 = 1 Day – 5 Days, 2 = 6 Days – 10 Days, 3 = 11 Days – 15 Days, 4 = 16 Days – 20 Days, 5 = 21+ Days
- Chronic Health (Medical) Issues: 0 = Clients with no chronic health (medical) issues, 2 = Clients with treated chronic health (medical) issues, 5 = Clients with an untreated chronic health (medical) issues

TAY VI-SPDAT + Chronic Mental Illness + Exposure to Violence Home/Community + LGBTQ + Person of Color + Length of Time Homelessness + Chronic Health (Medical) Issues = Total Score



## Things to Think About Doing in Your Community

### Monthly Case Conference Meetings

- Priority for Youth
- Case Management Assignments
- Mental/Behavioral Health for Assignments
  - PSH or RRH
- Issues/Concerns

### Monthly Youth Meetings

- Ways to Increase Youth Funding
- Ways to Increase Youth Agencies
- Increase Case Management
- Case Loads

### Monthly Youth Action Board Meetings

- Discussions about Current RRH and PSH Programs
- Ways to Increase Youth Participation
- Shared Housing Models
- Issues/Concerns



## Questions?

**END YOUTH  
HOMELESSNESS**