

Leveraging Data on Children Experiencing Homelessness for Early Care and Education

Sara Shaw | Ashley Hirilall | Tamara Halle



Increasing Capacity &
Building Connections:
Bridging to the Future



Acknowledgements

- The planning for this presentation was funded through the Office of Planning, Research and Evaluation (OPRE) in the Administration for Children and Families (ACF) and managed through a contract with Child Trends.





Agenda

- Background Information
- Research Questions
- Methodology
- Findings
- Considerations
- Small Group Discussions



Background Information



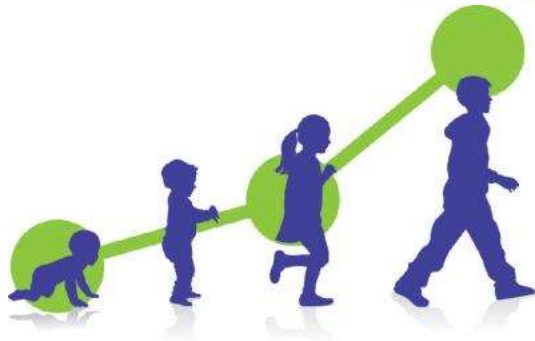


Early childhood homelessness estimates

- Children under 6 represent just about half **(49.6%)** (Solari et al., 2017) of all children in federally funded shelters
- Family Options data show **50.4%** of homeless families had a child under 5 years old and, **30%** had children birth to 2 years old (Gubits et al., 2018)
- **1.2 million** children under 6 experienced homelessness in 2016 (Administration of Children and Families, 2017)



Why do the early years matter?



- Foundation for: Cognitive, social/emotional, and motor development
- Period of rapid development
- Sets stage for later years

Slide 6

AH31

Added note about the difference between youth and early childhood homelessness.

Ashley Hirilall, 4/11/2019



Ecological Model



- Framework for examining settings at different levels of an ecological system and their interactions affect a child's development



Correlates of early childhood homelessness

Health outcomes:

- Increased risk for a stay in Neonatal Intensive Care Units
- Limited access to well-baby visits
- Less likely to be breastfed by their mothers (Little et al., 2005; Richards, Merrill, & Baksh, 2011)

Educational outcomes:

- Poor academic achievement
- Higher rates of behavioral problems (Gewirtz, Hart-Shegos, & Medhanie, 2008; Perlman & Fantuzzo, 2010)



High-quality ECE can buffer the negative outcomes associated with early childhood homelessness





Types of ECE by Funding Source

Public pre-K

Head Start/Early Head Start

Child Care Subsidy



Challenges with identifying young children experiencing homelessness

- Difficulty with measuring the housing status of young children
- Federal agencies rely on different definitions of homelessness for data collection purposes
- ECE systems are only just beginning to collect this data

Data Sources – ECE/Education

	Data Source Type	Data Included	Limitations of Data for National Estimates
Early Head Start/Head Start	Program Information Report (PIR)	(1) the number of <u>families</u> experiencing homelessness in Head Start; (2) the number of <u>children</u> experiencing homelessness in Head Start; (3) the number of children eligible for Head Start due to homelessness; (4) the number of families experiencing homelessness who need and acquired housing.	<ul style="list-style-type: none"> Only includes data on children enrolled in Early Head Start or Head Start programs.
Child Care Development Fund (CCDF)	State CCDF Plans/databases	Number of children experiencing homelessness who receive child care subsidy.	<ul style="list-style-type: none"> Not systematically available across states. When available, data may not tell us where children experiencing homelessness are enrolled Data are available only for children receiving subsidies
Department of Education – McKinney-Vento	Department of Education, ED Facts	Number of children ages three to five experiencing homelessness enrolled in LEA-funded early care and education programs.	<ul style="list-style-type: none"> Not inclusive of children experiencing homelessness who are in non-publicly funded early care and education programs.



Data Sources – Housing

	Data Source Type	Data Included	Limitations of Data for National Estimates
Point In Time (PIT)	Information report – Annual Homeless Assessment Report (AHAR)	Number of children in emergency shelters and transitional housing or counted on the street during one January night.	<ul style="list-style-type: none">Does not capture the number of individuals living doubled up or in other substandard housing locations outside of the living situations included in the point in time count
Homeless Management Information System (HMIS)	Database	Number of children in emergency or transitional housing programs.	Type of data collected varies across communities. Typically, there are very limited data on children birth to five.



Current Study





Research Questions

- How do states and communities support the enrollment of young children experiencing homelessness in ECE?
- How do states and communities use data to identify young children experiencing homelessness?
- What are promising practices and challenges around data used to identify and enroll these families in ECE?



Methodology

Case studies with six states and communities

- North Carolina
- Idaho
- Minnesota
- Oklahoma
- Washington, D.C.
- Los Angeles, California

State, county, or local respondents

- ECE
- Education
- Housing
- Subsidy



Interview Topics

- Identifying young children experiencing homelessness
- Services provided
 - Challenges with providing these services
- Innovative practices to enroll/support young children experiencing homelessness
- Collaboration with other agencies or organizations



Findings





Confusion over differences in definitions across federal agencies

Housing and subsidy staff across all communities discussed confusion about the differences in definitions of homelessness



Estimating the number of children experiencing homelessness

Respondents recognize that current estimates from federal agencies likely underrepresent families experiencing homelessness



Methods for collecting data to identify families experiencing homelessness

- Self-declare housing status
- Enrollment Forms
- McKinney-Vento liaisons through older sibling's student enrollment questionnaire

Respondents recognized that parents may be concerned about disclosing housing status for fear of potential consequences



Improving data systems for identifying and providing outreach to families

- Improving process for collecting housing status (subsidy and housing)
- Need for more systematic data collection and outreach
- Increased collaboration among ECE and housing



Considerations to strengthen data to identify and enroll families experiencing homelessness in ECE

- ECE programs and housing programs could explore:
 - collecting similar data elements on homelessness, when feasible
 - collecting information about housing status frequently and thoughtfully
 - developing high-quality data systems to support families experiencing homelessness



Questions?





Small Group Discussions

1. Three discussion topics: (~10 mins)
 1. Data on young children experiencing homelessness
 2. Quality of data
 3. Data sharing

1. Share out (~10 mins)



#1: Data on young children experiencing homelessness

- What data sources does your community currently use to identify young children experiencing homelessness?
- What are some of the challenges with using these data sources?
- Are there other sources of data that might be helpful for identifying the number of children 0-5 experiencing homelessness in your community?



#2: Quality of Data

- Do you believe the data you are currently using to estimate the number of young children experiencing homelessness are accurate? Why or why not?
- If you have concerns about the quality of the data you have on children birth to five experiencing homelessness, what are they?
- What are some of the strategies you could use to strengthen the quality of the data in your community?



#3 Data Sharing

- Does your community currently share data for the purpose of identifying, or providing services to young children experiencing homelessness? If so, who do you share this data with? And what is the purpose?
- Are there challenges you face in sharing this data? If you are not currently sharing data, are there challenges that prevent you from doing so?
- What are some potential benefits for sharing data between housing and early childhood systems?



Resources

The Early Childhood Self-Assessment Tool for Family Shelters:

https://www.acf.hhs.gov/sites/default/files/ecd/ech_family_shelter_self_assessment_tool_120114_final.pdf

The Early Childhood Self-Assessment Tool for Supportive Housing:

<https://www.csh.org/wp-content/uploads/2017/02/ECD-Family-Supportive-Housing-Self-Assessment-Tool-1.25.pdf>

Early Childhood Provider Training Modules:

<https://eclkc.ohs.acf.hhs.gov/family-support-well-being/article/supporting-children-families-experiencing-homelessness>

Home Visiting:

<https://www.acf.hhs.gov/ecd/home-visiting>



Thank you!

Sara Shaw – sshaw@childtrends.org

Ashley Hirilall – ahirilall@childtrends.org

Tamara Halle – thalle@childtrends.org