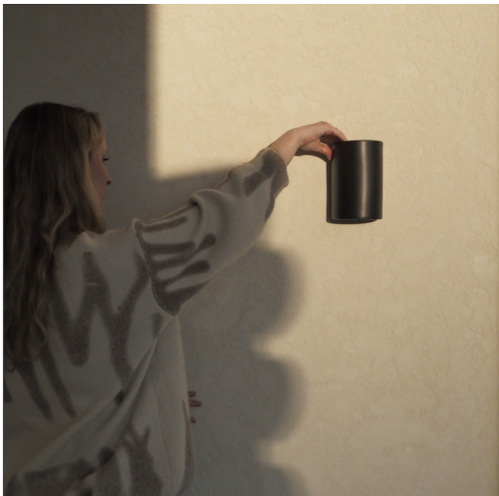
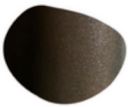


SLATE SHORT INTERIOR CERAMIC WALL LIGHT

Proudly Handmade in Tasmania

PRODUCT CODE	WP_SLA_S_GU10
DIMENSIONS (mm)	120W x 100D x 180H +/- 5mm
WEIGHT (kg)	2.0
CLAY TYPE	Smooth
GLAZE FINISH	Shimmered Slate



LIGHT DIRECTION Globe direction down, emits soft upwards glow.

LIGHT SOURCE GU10 240V, LED, dimmable, up to 15W, globe not included.

IP RATING IP20- For indoor use only, please refer to Wet Area IP Zone Diagram for bathroom installation locations.

MOUNTING PLATE FINISH White powder coated aluminium, protected against corrosion.

WARRANTY 3 year structural warranty, for more information please refer to website.

We Ponder

