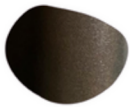


## SLATE TALL INTERIOR CERAMIC WALL LIGHT

Proudly Handmade in Tasmania

PRODUCT CODE	WP_SLAT_GU10
DIMENSIONS (mm)	120W x 100D x 260H +/- 5mm
WEIGHT (kg)	2.5
CLAY TYPE	Smooth
GLAZE FINISH	Shimmered Slate



**LIGHT DIRECTION** Globe direction down, emits soft upwards glow.

**LIGHT SOURCE** GU10 240V, LED, dimmable, up to 15W, globe not included.

**IP RATING** IP20- For indoor use only, please refer to Wet Area IP Zone Diagram for bathroom installation locations.

**MOUNTING PLATE FINISH** White powder coated aluminium, protected against corrosion.

**WARRANTY** 3 year structural warranty, for more information please refer to website.

# We Ponder

