

CHALET L'ARCTIQUE
COURCHEVEL 1850



HEART OF THE THREE VALLEYS



Welcome to Chalet L'Arctique: a six-bedroom (sleeps up to 14) exclusive-use chalet with hot tub and pool, in the centre of Courchevel 1850. Situated over 5 floors this spacious sanctuary blends exquisite interiors, functional layout and traditional Alpine character.

DISCOVER L'ARCTIQUE

14

SLEEPS

6

BEDROOMS

6

BATHROOMS

1

POOL & SPA

Situated in the centre of Courchevel 1850, this privately owned 3544 sq ft chalet is in a perfect position for your winter sports holiday. Just minutes from the ski lifts and ski school meeting points. For those wanting to enjoy the best of Courchevel's famous shopping and dining scene, the chalet is moments from designer boutiques and Michelin starred restaurants. The Chalet has been designed with great care to be a wonderful and serene home for its guests. We hope you have a fantastic stay.

Each stay at the Chalet L'Arctique is looked after by your very own Host so you can maximise time on the slopes and get to that relaxing glass of wine just that bit faster.

Your Host will be providing a continental breakfast each day alongside a daily turndown service if required. They will ensure the chalet is ready for your arrival and are experts in the local area - whether you need recommendations for dinner or how the slopes are looking that week.

ENTRANCE LEVEL

BEDROOM 6: DOUBLE BEDROOM (SLEEPS 2) WITH ENSUITE SHOWER, WASH BASIN AND WC

LAUNDRY AREA WITH WASHING MACHINE AND DRYER

ENTRANCE AREA WITH HEATED SKI LOCKERS AND LOG BURNING FIREPLACE

KITCHENETTE, INCLUDING A COFFEE MACHINE

LOWER LEVEL

SWIMMING POOL WITH WATER JETS AND 10 PERSON HOT-TUB

84-INCH TV WITH SKY TV AND APPLE TV.

SHOWER & KITCHENETTE

FIRST FLOOR

MASTER BEDROOM: DOUBLE BED (SLEEPS 2), BALCONY. ENSUITE BATHROOM WITH DEEP BATH WITH SHOWER, MARBLE WASH BASIN AND WC

BEDROOM 2: DOUBLE BED (SLEEPS 2), BALCONY WITH GREAT VIEWS. ENSUITE BATHROOM WITH JACUZZI BATH WITH SHOWER, WASH BASIN AND SEPARATE WC

SECOND FLOOR

BEDROOM 3: DOUBLE BED (SLEEPS 2), BALCONY WITH GREAT VIEWS. ENSUITE BATHROOM WITH BATH WITH SHOWER, WASH BASIN AND SEPARATE WC

BEDROOM 4: DOUBLE BED (SLEEPS 2), BALCONY WITH GREAT VIEWS. ENSUITE WITH SHOWER, WASH BASIN AND WC

BEDROOM 5: BUNKROOM 2 SETS OF BUNKS (SLEEPS 4). ENSUITE WITH BATH WITH SHOWER, WASH BASIN AND WC

THIRD FLOOR

THERE IS A SOUTH-FACING BALCONY TO THE SITTING ROOM GIVING VIEWS OVER THE CENTRE OF THE RESORT TO AIGUILLE DE MEY IN THE DISTANCE.

OPEN PLAN LIVING SPACE WITH, LARGE COSY WRAP AROUND SOFA, A STRIKING SUSPENDED LOG BURNING FIRE PLACE AND TWO BALCONIES 75-INCH TV, WITH SKY TV AND APPLE TV.

SOLID WALNUT DINING TABLE THAT SEATS 16 AND CRYSTAL DROPLET CHANDELIER. WELL EQUIPPED KITCHEN, WITH LARGE STOVE, HOB, DISHWASHER, FRIDGE/FREEZER, COFFEE MACHINE.











MASTER BEDROOM



BEDROOM





BEDROOM



DINING ROOM LOOKING OUT ON TO THE SLOPES



COSY & LUXURIOUS INTERIORS



FREE STANDING BATHS & EN-SUITES



OPEN FIRES



SKI ROOM & HEATED LOCKERS



TRADITIONAL ALPINE CHARACTER



15 METRES FROM THE SLOPES



COMFY BUNK ROOM (SLEEPS 4 PEOPLE)



SERVICE PROVIDED BY YOUR CHALET HOST



IN THE HEART OF THE THREE VALLEYS



BEDROOM



BUNK ROOM WITH EN-SUITE (SLEEPING UP TO 4 PEOPLE)

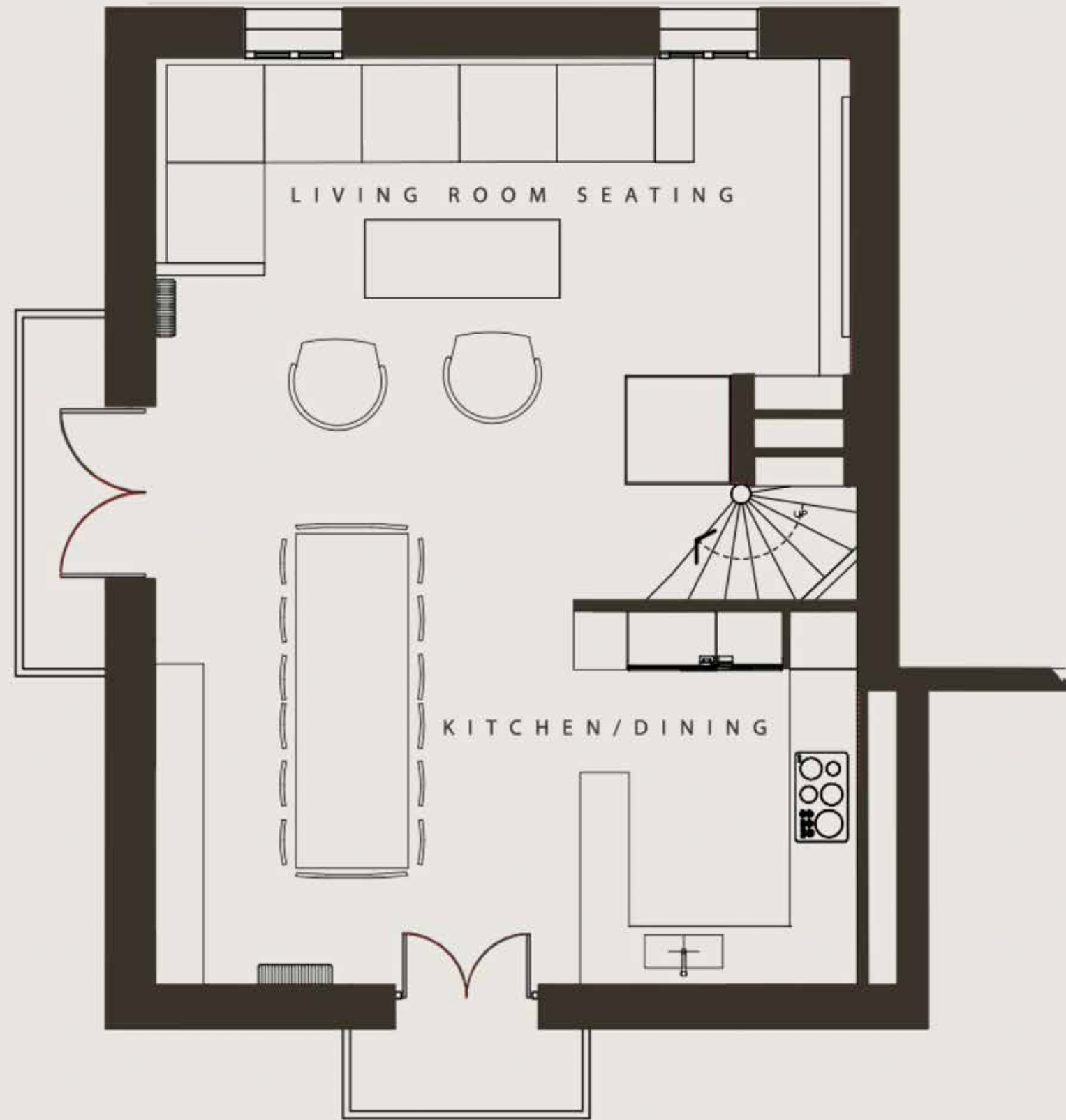




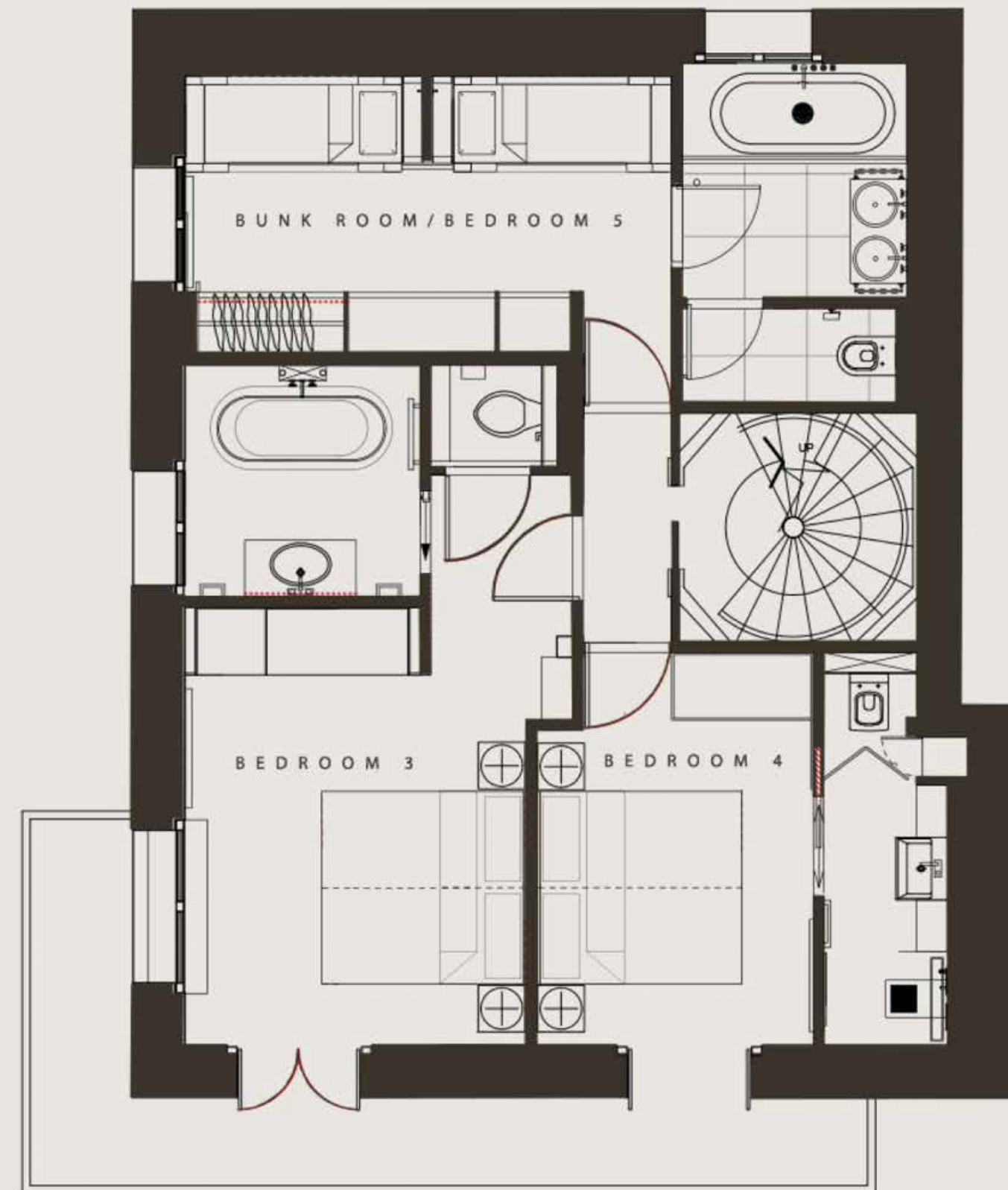
COSY UP NEXT TO ROARING FIRES



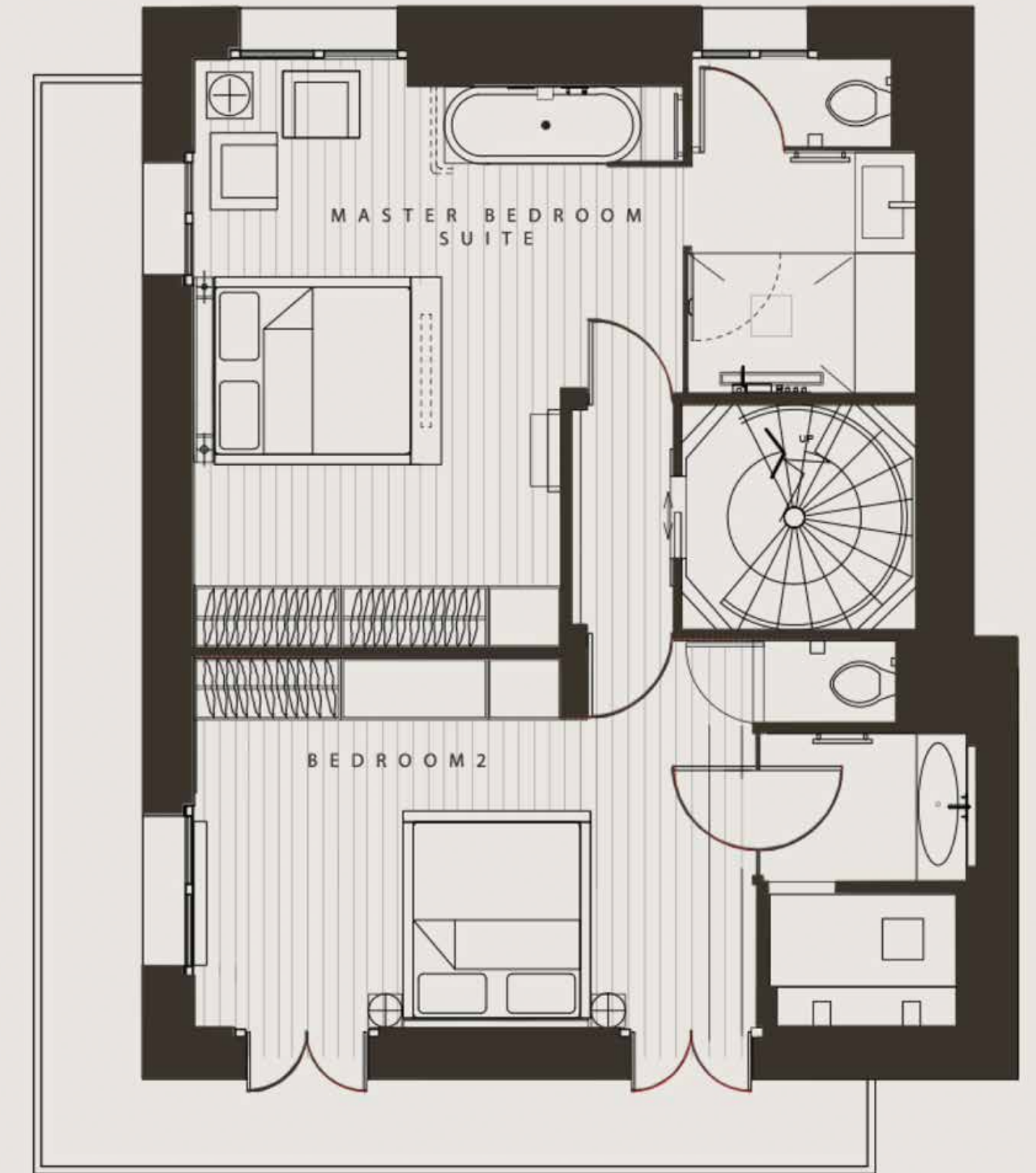
AFTER A DAY ON THE SLOPES, RELAX WITH FINE WINES AND CHAMPAGNE



THIRD FLOOR LIVING ROOM & KITCHEN/DINING



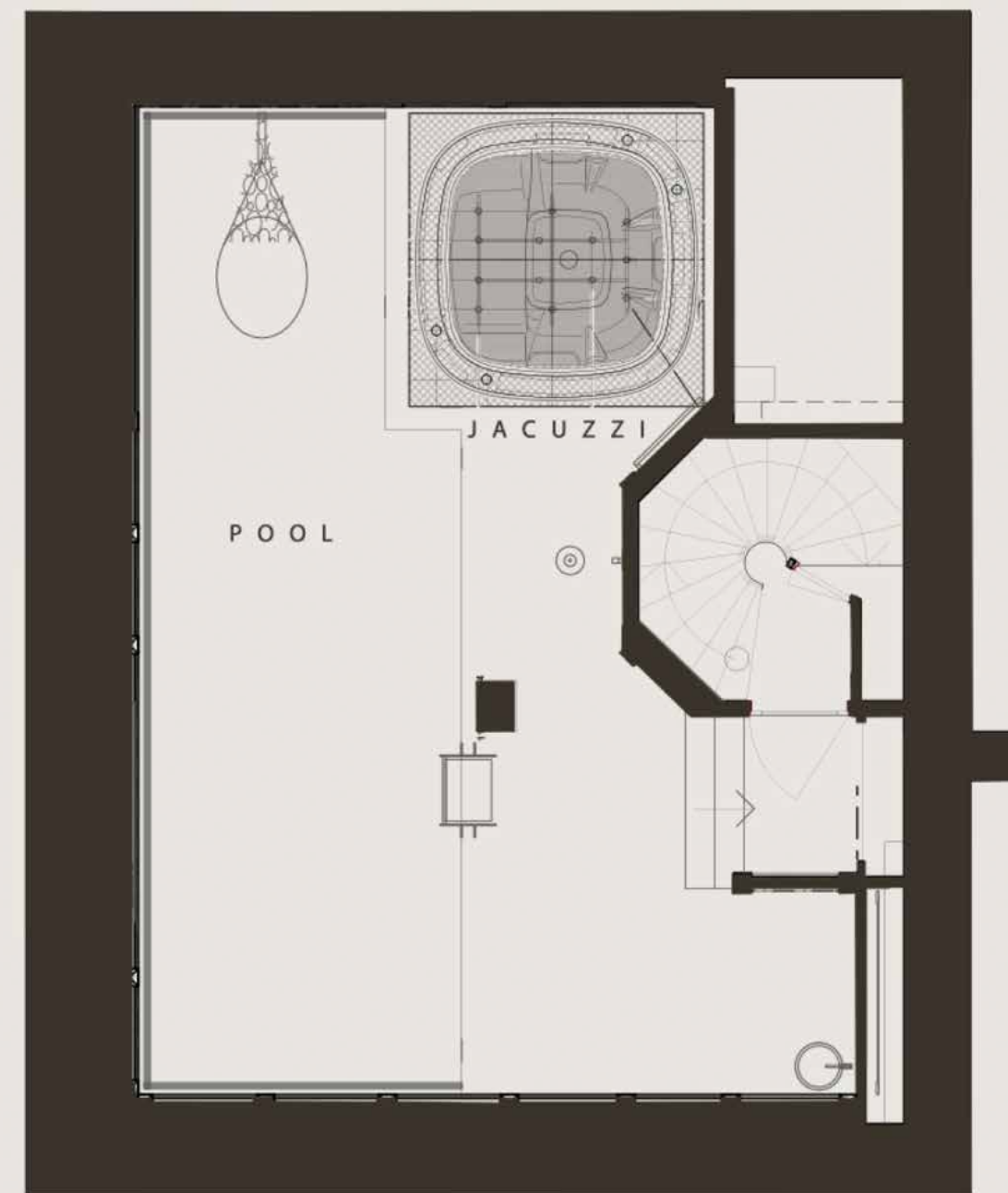
SECOND FLOOR, BEDROOMS 3,4 & 5



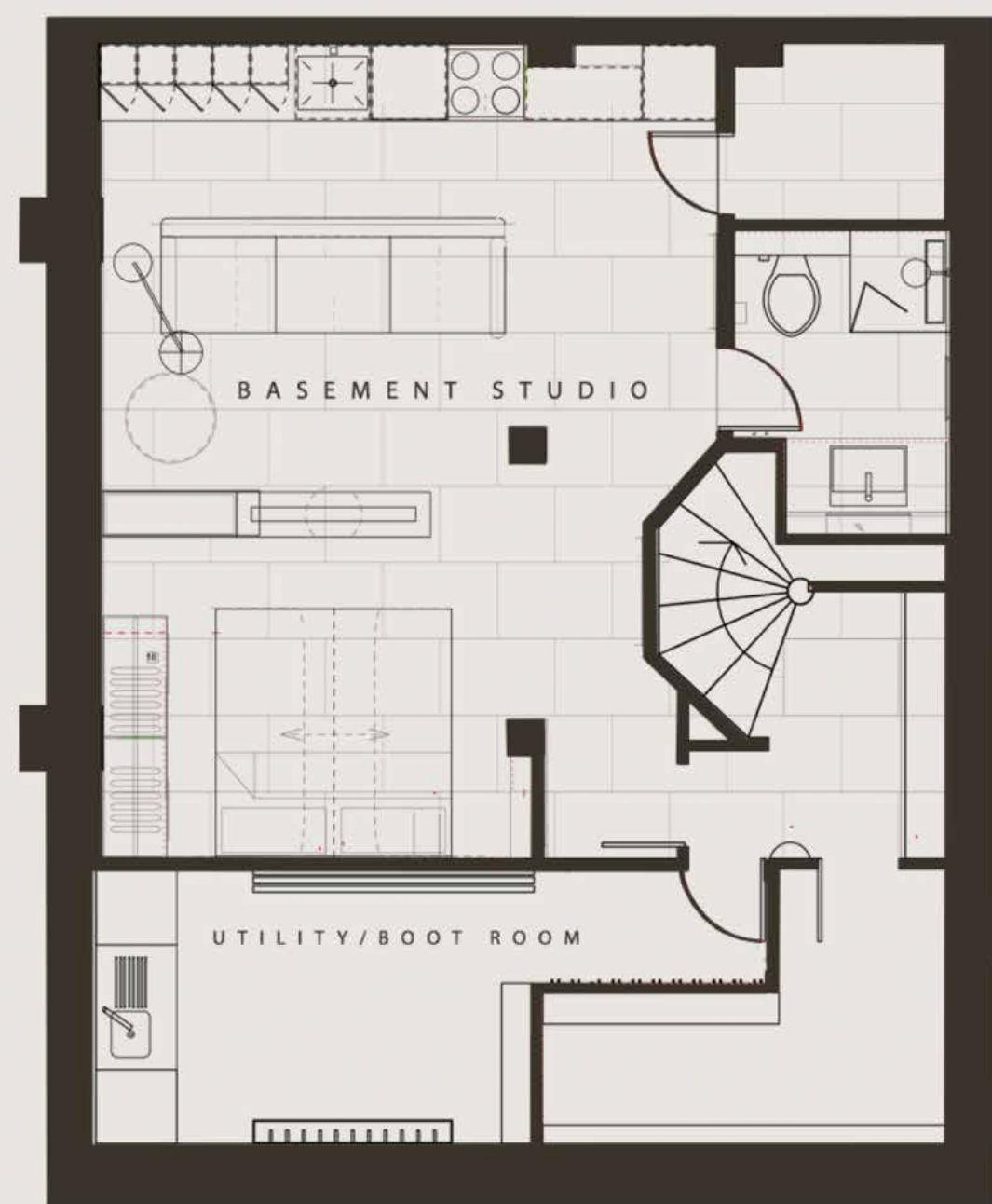
FIRST FLOOR MASTER BEDROOM AND BEDROOM 2



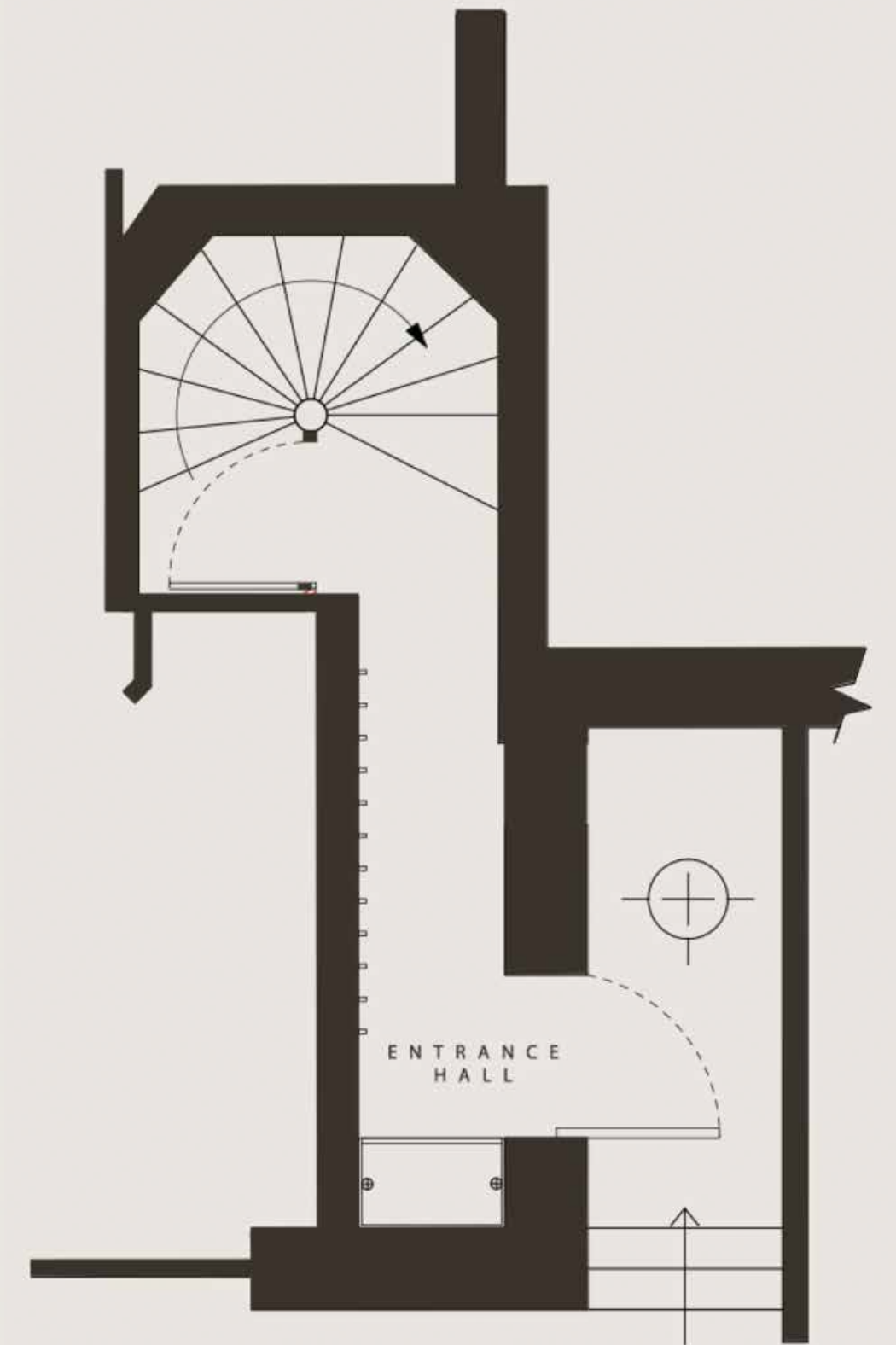
ENTRANCE LEVEL, DOUBLE BEDROOM AND SKI ROOM



LOWER LEVEL POOL AND SPA



BASEMENT STUDIO



ENTRANCE HALL

EXPLORE

THE SPIRIT OF COURCHEVEL

Courchevel 1850, part of the world's largest ski domain, The Three Valleys, is one of Europe's most sought-after winter resorts. With over 600kms of piste and more than 180 lifts, the area offers limitless variety.

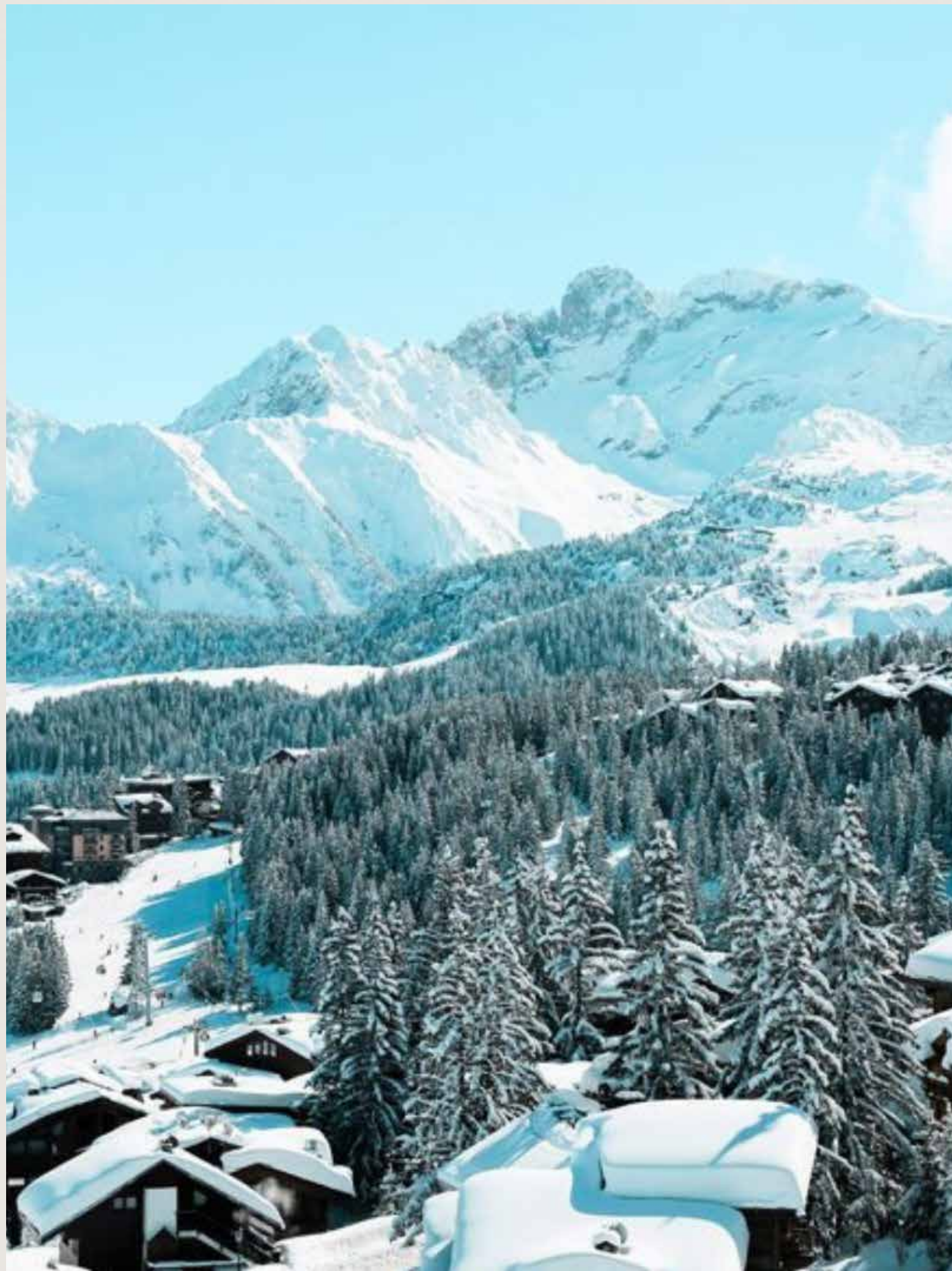
Our luxury ski-in ski-out chalet in the centre of Courchevel 1850 means you'll be able to get directly from your boot room to your favourite run in no time.



WELLNESS & OFF-PISTE ACTIVITIES



RESTAURANTS AND DINING



CHALET L'ARCTIQUE ON THE MAP



A RANGE OF MOUNTAIN FUN



ALTI-PORT, HELICOPTERS & HELI SKIING

CHALET L'ARCTIQUE
EXPLORE COURCHEVEL 1850



5* SHOPPING

45.4147° N, 6.6347° E

CHALET L'ARCTIQUE
RUE DE PLANTRET
ST BON TARENDAISE
COURCHEVEL 1850
73120
FRANCE

BOOKING CHALET L'ARCTIQUE

22/23 SEASON AVAILABILITY

The Chalet is available to rent from Saturday to Saturday. Arrivals are welcome from 16h00. All guests must vacate by 10h00 on the day of departure.

A 50% deposit is required to confirm your booking. Full payment must be received two month before the arrival date. Thereafter the whole booking amount is payable. Please see availability below and send a booking enquiry message.

GET IN TOUCH

To book or enquire please call [+447773816337](tel:+447773816337)

FAQ

Is the chalet ski-in and ski-out?

Chalet L'Arctique is a luxury ski-in/ski-out chalet in Courchevel 1850. You can go straight from the boot room to the slopes.

Ski Rental

Being in the heart of the Three Valleys, there are several ski rental shops in the centre of town. Chalet L'Arctique is within 5 minutes' walk to all the main shops and local attractions of Courchevel 1850.

How do I access the bootroom?

The boot room is located on the ground floor and can be accessed directly from the outside of the property as befits a luxury ski-in/ski-out chalet in Courchevel 1850. You can also access the boot room from the central staircase in the Chalet itself.

Location

Our luxury ski-in ski-out chalet is based in the epicentre of Courchevel 1850, 15 metres from the main chair lift.

Address: Chalet L'Arctique Rue de Plantret St Bon Tarentaise Courchevel 1850 73120 France

Check-in & Check-out

Arrivals are welcome from 16h00. All guests must vacate by 10h00 on the day of departure. We can offer flexible check-in and flexible check-out where possible. We will do our best to accommodate your requirements.

How to get here?

By plane Courchevel 1850 does have its own exclusive airport, used only for small private jets and light aircraft. We recommend flying to Geneva or Lyon which are the nearest large international airports to Courchevel and getting a private transfer to take you the remainder of the way into the mountains. Chambery and Grenoble airports are closer, but there are fewer flights in and out of them during the day, and they are serviced from fewer international airports. Regarding the transfer from airport to Courchevel, a lot of private companies are aware of the huge request from people who want to get there, so it won't be difficult to contact one of the multiple agencies out there in order to receive a quick and comfortable transfer, either for individuals or groups. Public bus services and shuttles also run from Geneva, Lyon and Chambery: timetables are subject to change with the seasons, so we recommend checking before you travel. By train Courchevel 1850 is located in the Three Valleys, and the nearest town is Moutiers, at 24 km away. There you have a train station with services from London, Paris and Geneva among other European towns and cities. From London, services operate to Moutiers from London St Pancras, which takes between seven and a half hours and ten hours. Trains from Paris (Gare de Lyon) for Moutiers normally take between four and six hours. From Geneva and Milan, you will need to do a quick change at Chambery, where you can pick up a connecting train. To get from Moutiers station to Courchevel, there are convenient taxis just outside the station which will bring you right to the door of your luxury chalet. Alternatively, there are several buses that also travel this route. Driving If you fancy a road trip, then we have included below the approximate driving times to Courchevel: London- 13 hours Calais- 10.5 hours Paris- 7.5 hours Frankfurt- 7.5 hours Milan- 4.5 hours Geneva- 2.75 hours Lyon- 2.75 hours Car rental facilities are also available in Courchevel 1850, perfect for exploring the surrounding mountains or venturing further afield to neighbouring towns. Of course, you can also pick up your hire car at the major airports: either pre-book this online or bring your documentation with you when you fly.

Are you pet-friendly?

Unfortunately, we cannot accommodate pets at the chalet.

Can I smoke?

We are strictly a non-smoking luxury chalet in Courchevel.

Cancellation & Change Policy

If you find that you can no longer honour your booking at our privately-owned chalet then we can offer a 50% refund if cancelled up to 30 days before your expected arrival date.

Can beds be twinned?

Yes - we can configure both bedrooms 2 and 3 to make them twin rooms, just let us know at the time of your booking.

Does the chalet provide a cot?

Yes - we can provide a cot for infants. For your convenience, please let us know at the time of your booking.

What is provided in the kitchen?

In the upstairs open-plan kitchen, we have an American style fridge freezer, a dishwasher and a large oven with hob - perfect for both a budding gourmet chef to impress the group and a humbler cook whipping up some comfort food. For those in need of a quick pick-me-up en route to or coming back from the slopes, the ground floor kitchen of the ski-in/ski-out chalet also has a coffee machine. All crockery and cutlery are also provided in both kitchens but do get in touch if you want to check on specific items.

Château L'Arctique

GET IN TOUCH

To book or enquire please call [+447773816337](tel:+447773816337)