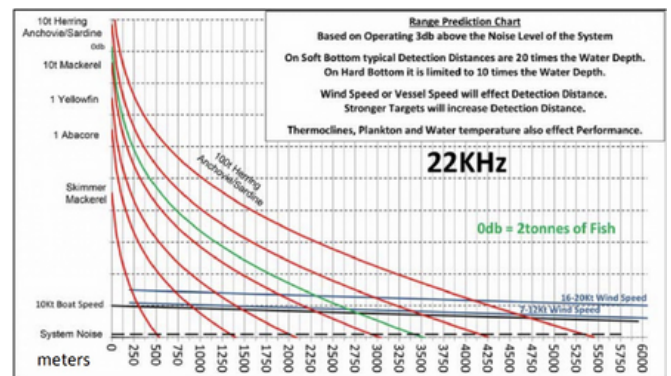
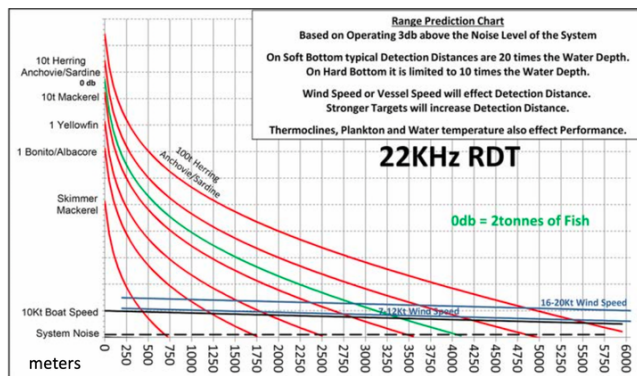


MAQ 22

NOW STABILIZED

- Low frequency operation for long range detection
- Proven to find Tuna, Marlin, Mackerel, Sardine, Herring Anchovy and other pelagic species.
- Selection of beamwidths as narrow as 6° in transmit and receive results in excellent performance when operating in shallow water, on near surface and near bottom detection. The unique qualities, of the narrow beam, means further detection distance at surface and in shallow water. Selectable Transmit power reduction to reduce reverberation and side lobe interferences.



RDT (Rotational Directional Transmission)

Optional for an increase in Range of an average of 20%. Fully stabilized best for shallow water and long range detection.