

PCMH Quality of Care Indicators

IMMUNIZATIONS



% of patients
(turning the age of 2)
who were
fully immunized

11.8%

GOAL: 38.2%

% of patients
(turning the age of 13)
who received Tdap,
HPV, and
meningococcal

9.8%

GOAL: 36.7%

% of patients
(18 and over) who
were immunized
with Tdap vaccine
in the last 10 years

38.6%

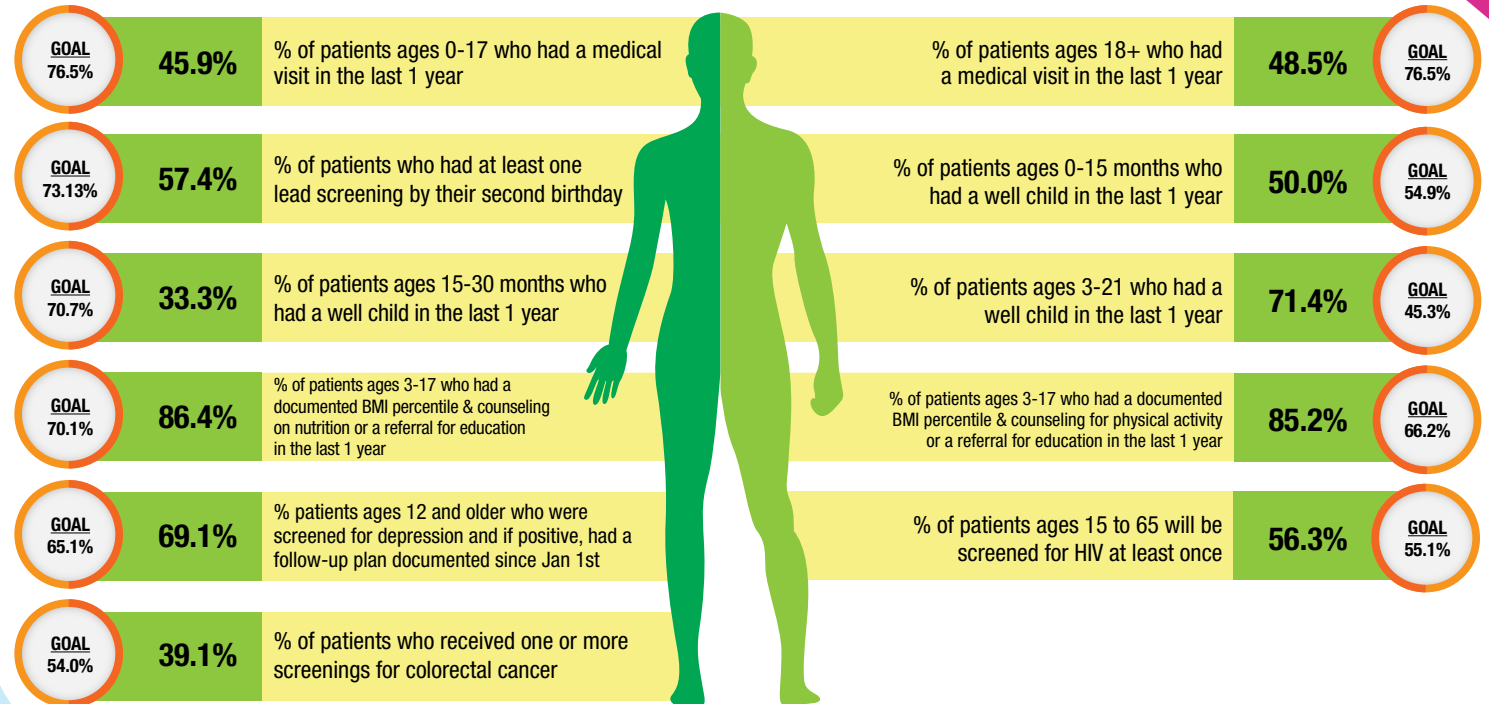
GOAL: 52.6%

% of patients
(18 and over) who
were immunized
with Flu vaccine
each flu season.

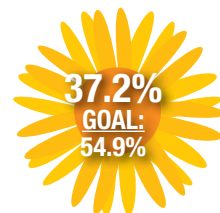
14.4%

GOAL: 35.0%

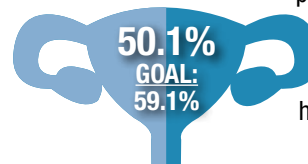
PREVENTATIVE CARE



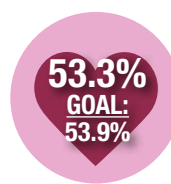
WOMEN'S HEALTH



% of female patients
ages 16-24 who are
sexually active
have a chlamydia
screening every
12 months

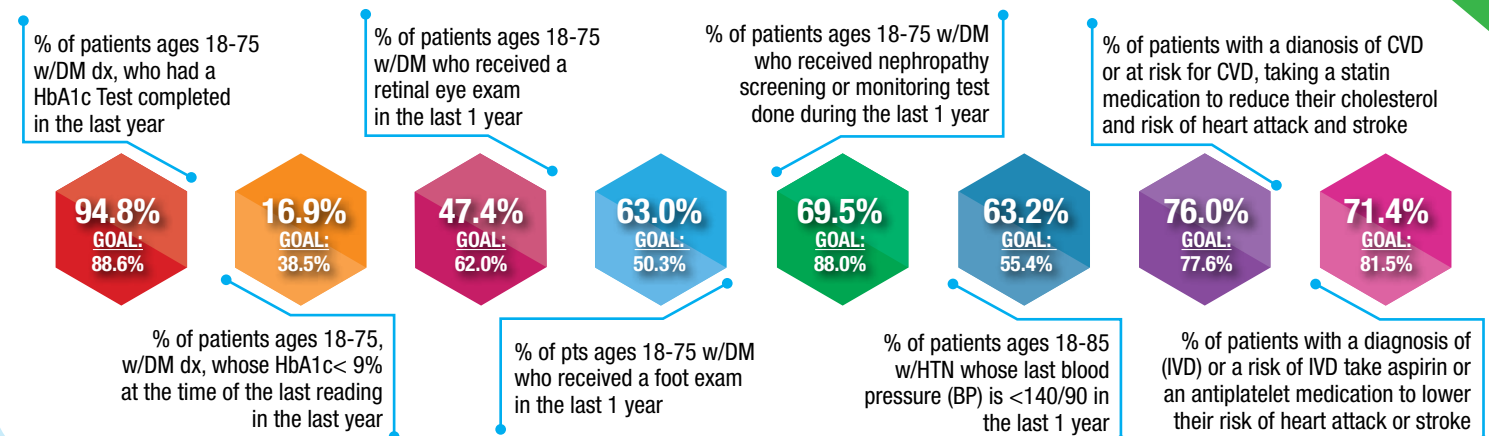


% of female
patients ages 21-64
have a pap test
every 3 years
Ages 30-64
have a pap test with
HPV (co-test)
every 5 years



% of female patients
ages 50-74 have a
mammogram in the
last 2 years

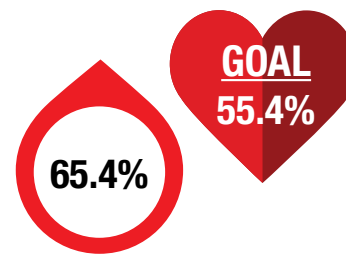
CHRONIC DISEASE MANAGEMENT



VULNERABLE - ELDERLY



% of patients ages 85-120
whose last blood pressure (BP)
is <150/90 in the last 1 year



PCMH Quality of Care Indicators

IMMUNIZATIONS



% of patients
(turning the age of 2)
who were
fully immunized

N/A

GOAL: 38.2%

% of patients
(turning the age of 13)
who received Tdap,
HPV, and
meningococcal

45.5%

GOAL: 36.7%

% of patients
(18 and over) who
were immunized
with Tdap vaccine
in the last 10 years

69.5%

GOAL: 52.6%

% of patients
(18 and over) who
were immunized
with Flu vaccine
each flu season.

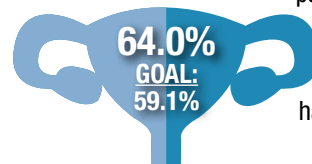
43.0%

GOAL: 35.0%

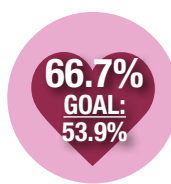
WOMEN'S HEALTH



% of female patients
ages 16-24 who are
sexually active
have a chlamydia
screening every
12 months



% of female
patients ages 21-64
have a pap test
every 3 years
Ages 30-64
have a pap test with
HPV (co-test)
every 5 years



% of female patients
ages 50-74 have a
mammogram in the
last 2 years

VULNERABLE - ELDERLY

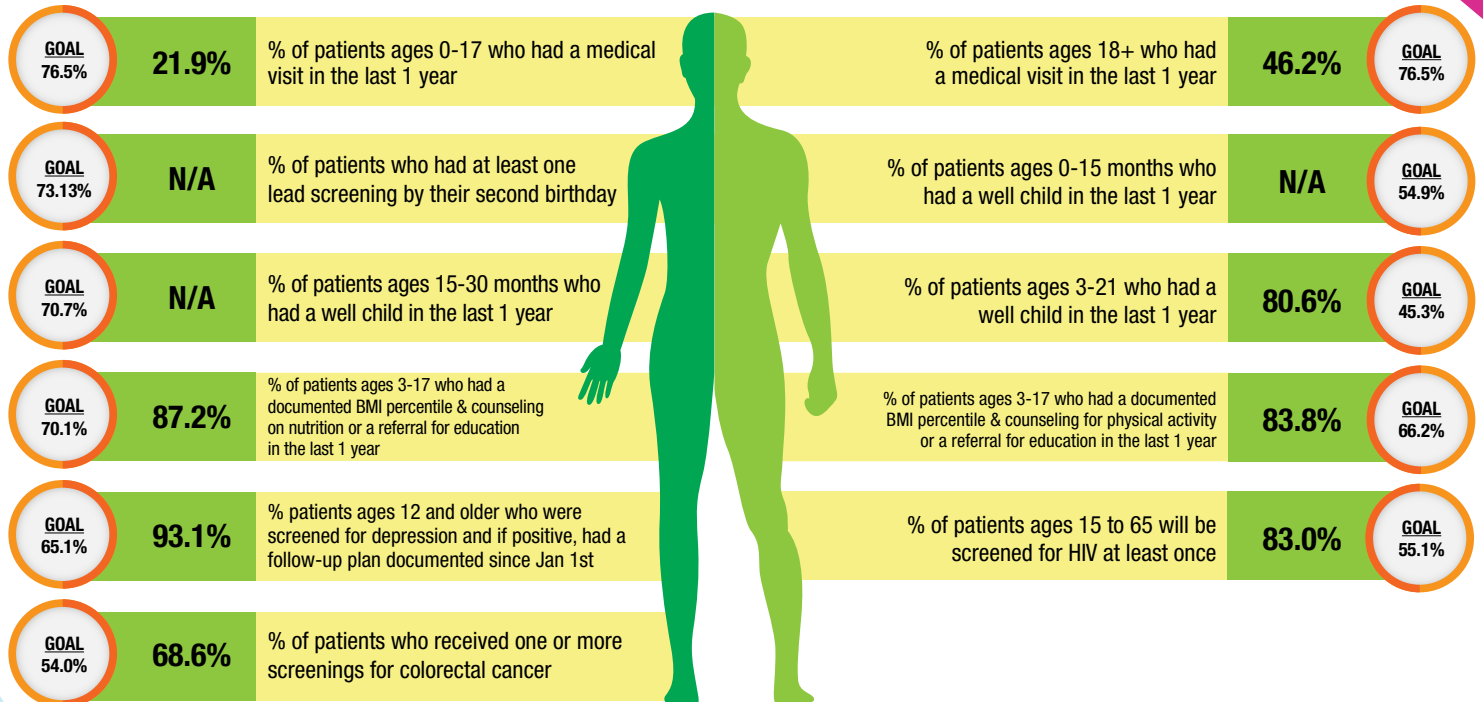


% of patients ages 85-120
whose last blood pressure (BP)
is <150/90 in the last 1 year

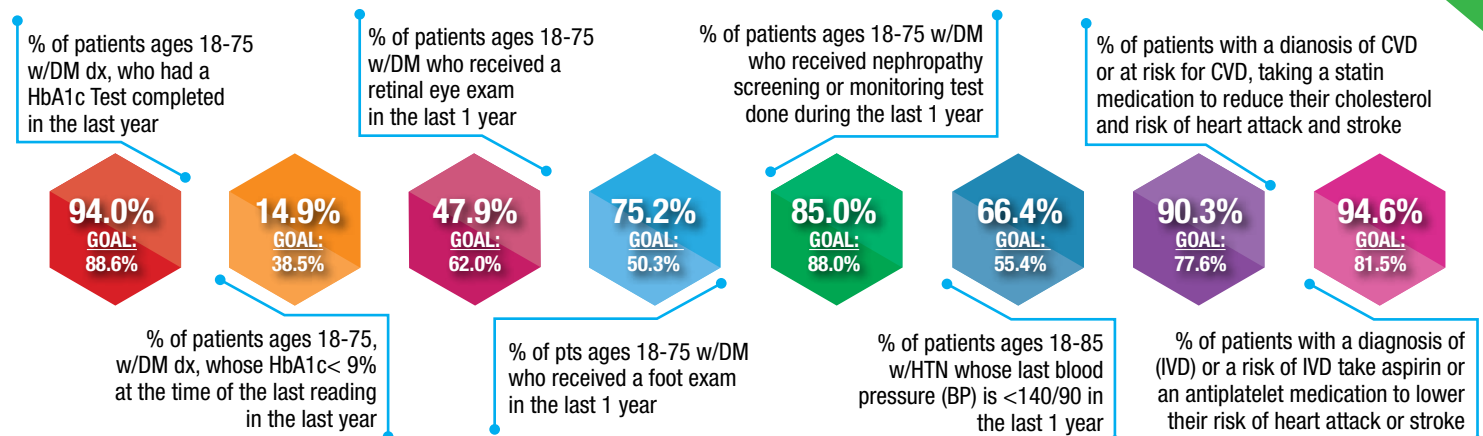
64.4%

**GOAL
55.4%**

PREVENTATIVE CARE



CHRONIC DISEASE MANAGEMENT



PCMH Quality of Care Indicators

IMMUNIZATIONS



% of patients
(turning the age of 2)
who were
fully immunized

N/A

GOAL: 38.2%

% of patients
(18 and over) who
were immunized
with Tdap vaccine
in the last 10 years

27.2%

GOAL: 52.6%

% of patients
(18 and over) who
were immunized
with Flu vaccine
each flu season.

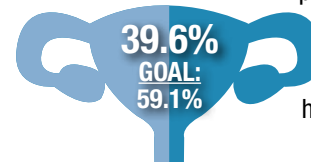
17.5%

GOAL: 35.0%

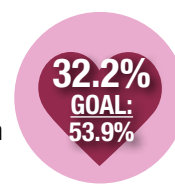
WOMEN'S HEALTH



% of female patients
ages 16-24 who are
sexually active
have a chlamydia
screening every
12 months



% of female
patients ages 21-64
have a pap test
every 3 years
Ages 30-64
have a pap test with
HPV (co-test)
every 5 years



% of female patients
ages 50-74 have a
mammogram in the
last 2 years

VULNERABLE - ELDERLY



% of patients ages 85-120
whose last blood pressure (BP)
is <150/90 in the last 1 year

70.3%

**GOAL
55.4%**

PREVENTATIVE CARE

**GOAL
76.5%**

0.0%

% of patients ages 0-17 who had a medical
visit in the last 1 year

% of patients ages 18+ who had
a medical visit in the last 1 year

49.2%

**GOAL
76.5%**

**GOAL
73.13%**

N/A

% of patients who had at least one
lead screening by their second birthday

% of patients ages 0-15 months who
had a well child in the last 1 year

N/A

**GOAL
54.9%**

**GOAL
70.7%**

N/A

% of patients ages 15-30 months who
had a well child in the last 1 year

% of patients ages 3-21 who had a
well child in the last 1 year

31.6%

**GOAL
45.3%**

**GOAL
70.1%**

0.0%

% of patients ages 3-17 who had a
documented BMI percentile & counseling
on nutrition or a referral for education
in the last 1 year

% of patients ages 3-17 who had a documented
BMI percentile & counseling for physical activity
or a referral for education in the last 1 year

0.0%

**GOAL
66.2%**

**GOAL
65.1%**

82.9%

% patients ages 12 and older who were
screened for depression and if positive, had a
follow-up plan documented since Jan 1st

% of patients ages 15 to 65 will be
screened for HIV at least once

64.2%

**GOAL
55.1%**

**GOAL
54.0%**

31.2%

% of patients who received one or more
screenings for colorectal cancer

CHRONIC DISEASE MANAGEMENT

% of patients ages 18-75
w/DM dx, who had a
HbA1c Test completed
in the last year

90.8%

**GOAL:
88.6%**

% of patients ages 18-75,
w/DM dx, whose HbA1c < 9%
at the time of the last reading
in the last year

20.0%

**GOAL:
38.5%**

% of patients ages 18-75
w/DM who received a
retinal eye exam
in the last 1 year

37.9%

**GOAL:
62.0%**

% of pts ages 18-75 w/DM
who received a foot exam
in the last 1 year

20.5%

**GOAL:
50.3%**

% of patients ages 18-75 w/DM
who received nephropathy
screening or monitoring test
done during the last 1 year

62.9%

**GOAL:
88.0%**

% of patients ages 18-85
w/HTN whose last blood
pressure (BP) is <140/90 in
the last 1 year

72.1%

**GOAL:
55.4%**

% of patients with a diagnosis of CVD
or at risk for CVD, taking a statin
medication to reduce their cholesterol
and risk of heart attack and stroke

79.4%

**GOAL:
77.6%**

% of patients with a diagnosis of
(IVD) or a risk of IVD take aspirin or
an antiplatelet medication to lower
their risk of heart attack or stroke

75.6%

**GOAL:
81.5%**

PCMH Quality of Care Indicators

IMMUNIZATIONS



% of patients
(turning the age of 2)
who were
fully immunized

27.5%

GOAL: 38.2%

% of patients
(turning the age of 13)
who received Tdap,
HPV, and
meningococcal

27.2%

GOAL: 36.7%

% of patients
(18 and over) who
were immunized
with Tdap vaccine
in the last 10 years

51.2%

GOAL: 52.6%

% of patients
(18 and over) who
were immunized
with Flu vaccine
each flu season.

22.2%

GOAL: 35.0%

PREVENTATIVE CARE



GOAL
76.5%

39.1%

% of patients ages 0-17 who had a medical visit in the last 1 year

% of patients ages 18+ who had a medical visit in the last 1 year

45.6%

GOAL
76.5%

GOAL
73.13%

49.2%

% of patients who had at least one lead screening by their second birthday

% of patients ages 0-15 months who had a well child in the last 1 year

40.0%

GOAL
54.9%

GOAL
70.7%

16.7%

% of patients ages 15-30 months who had a well child in the last 1 year

% of patients ages 3-21 who had a well child in the last 1 year

49.3%

GOAL
45.3%

GOAL
70.1%

63.9%

% of patients ages 3-17 who had a documented BMI percentile & counseling on nutrition or a referral for education in the last 1 year

% of patients ages 3-17 who had a documented BMI percentile & counseling for physical activity or a referral for education in the last 1 year

63.4%

GOAL
66.2%

GOAL
65.1%

52.5%

% patients ages 12 and older who were screened for depression and if positive, had a follow-up plan documented since Jan 1st

% of patients ages 15 to 65 will be screened for HIV at least once

62.4%

GOAL
55.1%

GOAL
54.0%

45.6%

% of patients who received one or more screenings for colorectal cancer

CHRONIC DISEASE MANAGEMENT

% of patients ages 18-75 w/DM dx, who had a HbA1c Test completed in the last year

89.9%

GOAL:
88.6%

% of patients ages 18-75 w/DM who received a retinal eye exam in the last 1 year

16.1%

GOAL:
38.5%

% of patients ages 18-75, w/DM dx, whose HbA1c < 9% at the time of the last reading in the last year

45.6%

GOAL:
62.0%

% of pts ages 18-75 w/DM who received a foot exam in the last 1 year

44.5%

GOAL:
50.3%

% of patients ages 18-75 w/DM who received nephropathy screening or monitoring test done during the last 1 year

70.3%

GOAL:
88.0%

% of patients ages 18-85 w/HTN whose last blood pressure (BP) is <140/90 in the last 1 year

73.4%

GOAL:
55.4%

% of patients with a diagnosis of CVD or at risk for CVD, taking a statin medication to reduce their cholesterol and risk of heart attack and stroke

83.7%

GOAL:
77.6%

% of patients with a diagnosis of (IVD) or a risk of IVD take aspirin or an antiplatelet medication to lower their risk of heart attack or stroke

83.0%

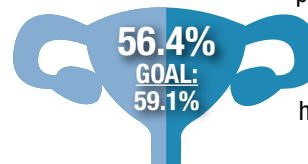
GOAL:
81.5%

WOMEN'S HEALTH



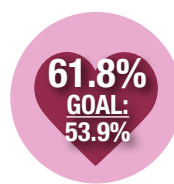
41.8%
GOAL:
54.9%

% of female patients ages 16-24 who are sexually active have a chlamydia screening every 12 months



56.4%
GOAL:
59.1%

% of female patients ages 21-64 have a pap test every 3 years
Ages 30-64 have a pap test with HPV (co-test) every 5 years



61.8%
GOAL:
53.9%

% of female patients ages 50-74 have a mammogram in the last 2 years

VULNERABLE - ELDERLY



% of patients ages 85-120 whose last blood pressure (BP) is <150/90 in the last 1 year

72.2%

GOAL
55.4%

PCMH Quality of Care Indicators

IMMUNIZATIONS



% of patients
(turning the age of 2)
who were
fully immunized

36.6%

GOAL: 38.2%

% of patients
(turning the age of 13)
who received Tdap,
HPV, and
meningococcal

38.6%

GOAL: 36.7%

% of patients
(18 and over) who
were immunized
with Tdap vaccine
in the last 10 years

59.0%

GOAL: 52.6%

% of patients
(18 and over) who
were immunized
with Flu vaccine
each flu season.

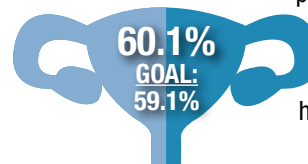
28.3%

GOAL: 35.0%

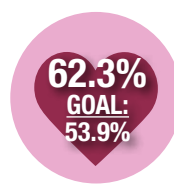
WOMEN'S HEALTH



% of female patients
ages 16-24 who are
sexually active
have a chlamydia
screening every
12 months



% of female
patients ages 21-64
have a pap test
every 3 years
Ages 30-64
have a pap test with
HPV (co-test)
every 5 years



% of female patients
ages 50-74 have a
mammogram in the
last 2 years

VULNERABLE - ELDERLY



% of patients ages 85-120
whose last blood pressure (BP)
is <150/90 in the last 1 year

71.9%

**GOAL
55.4%**

PREVENTATIVE CARE

**GOAL
76.5%**

42.6%

% of patients ages 0-17 who had a medical
visit in the last 1 year

% of patients ages 18+ who had
a medical visit in the last 1 year

49.0%

**GOAL
76.5%**

**GOAL
73.13%**

66.5%

% of patients who had at least one
lead screening by their second birthday

% of patients ages 0-15 months who
had a well child in the last 1 year

39.9%

**GOAL
54.9%**

**GOAL
70.7%**

48.9%

% of patients ages 15-30 months who
had a well child in the last 1 year

% of patients ages 3-21 who had a
well child in the last 1 year

67.3%

**GOAL
45.3%**

**GOAL
70.1%**

78.2%

% of patients ages 3-17 who had a
documented BMI percentile & counseling
on nutrition or a referral for education
in the last 1 year

% of patients ages 3-17 who had a documented
BMI percentile & counseling for physical activity
or a referral for education in the last 1 year

78.3%

**GOAL
66.2%**

**GOAL
65.1%**

72.7%

% patients ages 12 and older who were
screened for depression and if positive, had a
follow-up plan documented since Jan 1st

% of patients ages 15 to 65 will be
screened for HIV at least once

68.7%

**GOAL
55.1%**

**GOAL
54.0%**

51.7%

% of patients who received one or more
screenings for colorectal cancer

CHRONIC DISEASE MANAGEMENT

% of patients ages 18-75
w/DM dx, who had a
HbA1c Test completed
in the last year

91.8%

**GOAL:
88.6%**

% of patients ages 18-75
w/DM who received a
retinal eye exam
in the last 1 year

17.8%

**GOAL:
38.5%**

% of patients ages 18-75,
w/DM dx, whose HbA1c < 9%
at the time of the last reading
in the last year

47.5%

**GOAL:
62.0%**

% of patients ages 18-75 w/DM
who received nephropathy
screening or monitoring test
done during the last 1 year

56.4%

**GOAL:
50.3%**

% of pts ages 18-75 w/DM
who received a foot exam
in the last 1 year

74.5%

**GOAL:
88.0%**

% of patients with a diagnosis of CVD
or at risk for CVD, taking a statin
medication to reduce their cholesterol
and risk of heart attack and stroke

70.6%

**GOAL:
55.4%**

% of patients ages 18-85
w/HTN whose last blood
pressure (BP) is <140/90 in
the last 1 year

84.3%

**GOAL:
77.6%**

% of patients with a diagnosis of
(IVD) or a risk of IVD take aspirin or
an antiplatelet medication to lower
their risk of heart attack or stroke

83.1%

**GOAL:
81.5%**

PCMH Quality of Care Indicators

IMMUNIZATIONS



% of patients
(turning the age of 2)
who were
fully immunized

36.6%

GOAL: 38.2%

% of patients
(turning the age of 13)
who received Tdap,
HPV, and
meningococcal

38.6%

GOAL: 36.7%

% of patients
(18 and over) who
were immunized
with Tdap vaccine
in the last 10 years

59.0%

GOAL: 52.6%

% of patients
(18 and over) who
were immunized
with Flu vaccine
each flu season.

28.3%

GOAL: 35.0%

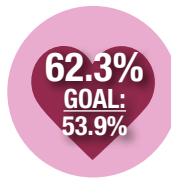
WOMEN'S HEALTH



% of female patients
ages 16-24 who are
sexually active
have a chlamydia
screening every
12 months



% of female
patients ages 21-64
have a pap test
every 3 years
Ages 30-64
have a pap test with
HPV (co-test)
every 5 years



% of female patients
ages 50-74 have a
mammogram in the
last 2 years

VULNERABLE - ELDERLY



% of patients ages 85-120
whose last blood pressure (BP)
is <150/90 in the last 1 year

71.9%

**GOAL
55.4%**

PREVENTATIVE CARE



**GOAL
76.5%**

42.6%

% of patients ages 0-17 who had a medical
visit in the last 1 year

% of patients ages 18+ who had
a medical visit in the last 1 year

49.0%

**GOAL
76.5%**

**GOAL
73.13%**

66.5%

% of patients who had at least one
lead screening by their second birthday

% of patients ages 0-15 months who
had a well child in the last 1 year

39.9%

**GOAL
54.9%**

**GOAL
70.7%**

48.9%

% of patients ages 15-30 months who
had a well child in the last 1 year

% of patients ages 3-21 who had a
well child in the last 1 year

67.3%

**GOAL
45.3%**

**GOAL
70.1%**

78.2%

% of patients ages 3-17 who had a
documented BMI percentile & counseling
on nutrition or a referral for education
in the last 1 year

% of patients ages 3-17 who had a documented
BMI percentile & counseling for physical activity
or a referral for education in the last 1 year

78.3%

**GOAL
66.2%**

**GOAL
65.1%**

72.7%

% patients ages 12 and older who were
screened for depression and if positive, had a
follow-up plan documented since Jan 1st

% of patients ages 15 to 65 will be
screened for HIV at least once

68.7%

**GOAL
55.1%**

**GOAL
54.0%**

51.7%

% of patients who received one or more
screenings for colorectal cancer

CHRONIC DISEASE MANAGEMENT

% of patients ages 18-75
w/DM dx, who had a
HbA1c Test completed
in the last year

91.8%

**GOAL:
88.6%**

17.8%

**GOAL:
38.5%**

% of patients ages 18-75,
w/DM dx, whose HbA1c < 9%
at the time of the last reading
in the last year

% of patients ages 18-75
w/DM who received a
retinal eye exam
in the last 1 year

47.5%

**GOAL:
62.0%**

56.4%

**GOAL:
50.3%**

% of pts ages 18-75 w/DM
who received a foot exam
in the last 1 year

% of patients ages 18-75 w/DM
who received nephropathy
screening or monitoring test
done during the last 1 year

74.5%

**GOAL:
88.0%**

% of patients ages 18-85
w/HTN whose last blood
pressure (BP) is <140/90 in
the last 1 year

70.6%

**GOAL:
55.4%**

% of patients with a diagnosis of CVD
or at risk for CVD, taking a statin
medication to reduce their cholesterol
and risk of heart attack and stroke

84.3%

**GOAL:
77.6%**

% of patients with a diagnosis of
(IVD) or a risk of IVD take aspirin or
an antiplatelet medication to lower
their risk of heart attack or stroke

83.1%

**GOAL:
81.5%**

PCMH Quality of Care Indicators

IMMUNIZATIONS



% of patients
(turning the age of 2)
who were
fully immunized

0.0%

GOAL: 38.2%

% of patients
(turning the age of 13)
who received Tdap,
HPV, and
meningococcal

21.4%

GOAL: 36.7%

% of patients
(18 and over) who
were immunized
with Tdap vaccine
in the last 10 years

59.7%

GOAL: 52.6%

% of patients
(18 and over) who
were immunized
with Flu vaccine
each flu season.

21.4%

GOAL: 35.0%

PREVENTATIVE CARE

**GOAL
76.5%**

34.1%

% of patients ages 0-17 who had a medical visit in the last 1 year

% of patients ages 18+ who had a medical visit in the last 1 year

46.6%

**GOAL
76.5%**

**GOAL
73.13%**

37.5%

% of patients who had at least one lead screening by their second birthday

% of patients ages 0-15 months who had a well child in the last 1 year

N/A

**GOAL
54.9%**

**GOAL
70.7%**

0.0%

% of patients ages 15-30 months who had a well child in the last 1 year

% of patients ages 3-21 who had a well child in the last 1 year

57.4%

**GOAL
45.3%**

**GOAL
70.1%**

74.0%

% of patients ages 3-17 who had a documented BMI percentile & counseling on nutrition or a referral for education in the last 1 year

% of patients ages 3-17 who had a documented BMI percentile & counseling for physical activity or a referral for education in the last 1 year

76.4%

**GOAL
66.2%**

**GOAL
65.1%**

80.8%

% patients ages 12 and older who were screened for depression and if positive, had a follow-up plan documented since Jan 1st

% of patients ages 15 to 65 will be screened for HIV at least once

36.8%

**GOAL
55.1%**

**GOAL
54.0%**

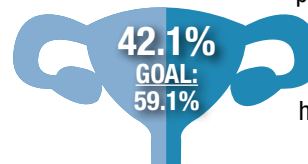
35.4%

% of patients who received one or more screenings for colorectal cancer

WOMEN'S HEALTH



% of female patients ages 16-24 who are sexually active have a chlamydia screening every 12 months



% of female patients ages 21-64 have a pap test every 3 years
Ages 30-64 have a pap test with HPV (co-test) every 5 years



% of female patients ages 50-74 have a mammogram in the last 2 years

VULNERABLE - ELDERLY



% of patients ages 85-120 whose last blood pressure (BP) is <150/90 in the last 1 year

39.1%

**GOAL
55.4%**

CHRONIC DISEASE MANAGEMENT

% of patients ages 18-75 w/DM dx, who had a HbA1c Test completed in the last year

87.0%

GOAL: 88.6%

% of patients ages 18-75 w/DM who received a retinal eye exam in the last 1 year

13.0%

GOAL: 38.5%

% of patients ages 18-75 w/DM who received nephropathy screening or monitoring test done during the last 1 year

34.8%

GOAL: 62.0%

% of patients ages 18-75 w/DM who received a foot exam in the last 1 year

37.0%

GOAL: 50.3%

% of patients ages 18-85 w/HTN whose last blood pressure (BP) is <140/90 in the last 1 year

53.3%

GOAL: 88.0%

% of patients with a diagnosis of CVD or at risk for CVD, taking a statin medication to reduce their cholesterol and risk of heart attack and stroke

55.9%

GOAL: 55.4%

% of patients with a diagnosis of (IVD) or a risk of IVD take aspirin or an antiplatelet medication to lower their risk of heart attack or stroke

75.0%

GOAL: 77.6%

% of patients with a diagnosis of CVD or at risk for CVD, taking a statin medication to reduce their cholesterol and risk of heart attack and stroke

66.7%

GOAL: 81.5%

PCMH Quality of Care Indicators

IMMUNIZATIONS



% of patients
(turning the age of 2)
who were
fully immunized

21.4%

GOAL: 38.2%

% of patients
(turning the age of 13)
who received Tdap,
HPV, and
meningococcal

23.4%

GOAL: 36.7%

% of patients
(18 and over) who
were immunized
with Tdap vaccine
in the last 10 years

64.9%

GOAL: 52.6%

% of patients
(18 and over) who
were immunized
with Flu vaccine
each flu season.

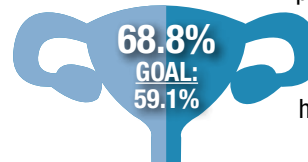
27.2%

GOAL: 35.0%

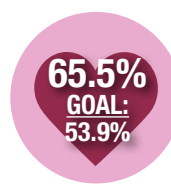
WOMEN'S HEALTH



% of female patients
ages 16-24 who are
sexually active
have a chlamydia
screening every
12 months



% of female
patients ages 21-64
have a pap test
every 3 years
Ages 30-64
have a pap test with
HPV (co-test)
every 5 years



% of female patients
ages 50-74 have a
mammogram in the
last 2 years

VULNERABLE - ELDERLY



% of patients ages 85-120
whose last blood pressure (BP)
is <150/90 in the last 1 year

81.6%

**GOAL
55.4%**

PREVENTATIVE CARE

**GOAL
76.5%**

43.9%

% of patients ages 0-17 who had a medical
visit in the last 1 year

% of patients ages 18+ who had
a medical visit in the last 1 year

51.9%

**GOAL
76.5%**

**GOAL
73.13%**

78.6%

% of patients who had at least one
lead screening by their second birthday

% of patients ages 0-15 months who
had a well child in the last 1 year

62.5%

**GOAL
54.9%**

**GOAL
70.7%**

33.3%

% of patients ages 15-30 months who
had a well child in the last 1 year

% of patients ages 3-21 who had a
well child in the last 1 year

60.9%

**GOAL
45.3%**

**GOAL
70.1%**

76.5%

% of patients ages 3-17 who had a
documented BMI percentile & counseling
on nutrition or a referral for education
in the last 1 year

% of patients ages 3-17 who had a documented
BMI percentile & counseling for physical activity
or a referral for education in the last 1 year

75.4%

**GOAL
66.2%**

**GOAL
65.1%**

81.7%

% patients ages 12 and older who were
screened for depression and if positive, had a
follow-up plan documented since Jan 1st

% of patients ages 15 to 65 will be
screened for HIV at least once

71.8%

**GOAL
55.1%**

**GOAL
54.0%**

52.9%

% of patients who received one or more
screenings for colorectal cancer

CHRONIC DISEASE MANAGEMENT

% of patients ages 18-75
w/DM dx, who had a
HbA1c Test completed
in the last year

89.3%
**GOAL:
88.6%**

% of patients ages 18-75,
w/DM dx, whose HbA1c < 9%
at the time of the last reading
in the last year

18.2%
**GOAL:
38.5%**

% of patients ages 18-75
w/DM who received a
retinal eye exam
in the last 1 year

45.9%
**GOAL:
62.0%**

% of pts ages 18-75 w/DM
who received a foot exam
in the last 1 year

56.6%
**GOAL:
50.3%**

% of patients ages 18-75 w/DM
who received nephropathy
screening or monitoring test
done during the last 1 year

70.9%
**GOAL:
88.0%**

% of patients ages 18-85
w/HTN whose last blood
pressure (BP) is <140/90 in
the last 1 year

69.6%
**GOAL:
55.4%**

% of patients with a diagnosis of CVD
or at risk for CVD, taking a statin
medication to reduce their cholesterol
and risk of heart attack and stroke

86.8%
**GOAL:
77.6%**

% of patients with a diagnosis of
(IVD) or a risk of IVD take aspirin or
an antiplatelet medication to lower
their risk of heart attack or stroke

83.6%
**GOAL:
81.5%**

PCMH Quality of Care Indicators

IMMUNIZATIONS



% of patients
(turning the age of 2)
who were
fully immunized

46.4%

GOAL: 38.2%

% of patients
(turning the age of 13)
who received Tdap,
HPV, and
meningococcal

45.2%

GOAL: 36.7%

% of patients
(18 and over) who
were immunized
with Tdap vaccine
in the last 10 years

59.6%

GOAL: 52.6%

% of patients
(18 and over) who
were immunized
with Flu vaccine
each flu season.

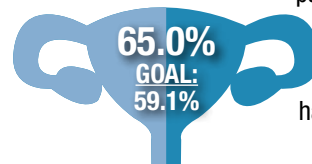
22.6%

GOAL: 35.0%

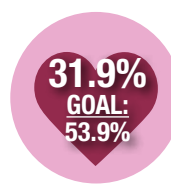
WOMEN'S HEALTH



% of female patients
ages 16-24 who are
sexually active
have a chlamydia
screening every
12 months



% of female
patients ages 21-64
have a pap test
every 3 years
Ages 30-64
have a pap test with
HPV (co-test)
every 5 years



% of female patients
ages 50-74 have a
mammogram in the
last 2 years

VULNERABLE - ELDERLY



% of patients ages 85-120
whose last blood pressure (BP)
is <150/90 in the last 1 year

100.0%

**GOAL
55.4%**

PREVENTATIVE CARE

**GOAL
76.5%**

46.0%

% of patients ages 0-17 who had a medical
visit in the last 1 year

% of patients ages 18+ who had
a medical visit in the last 1 year

20.2%

**GOAL
76.5%**

**GOAL
73.13%**

81.0%

% of patients who had at least one
lead screening by their second birthday

% of patients ages 0-15 months who
had a well child in the last 1 year

46.8%

**GOAL
54.9%**

**GOAL
70.7%**

54.4%

% of patients ages 15-30 months who
had a well child in the last 1 year

% of patients ages 3-21 who had a
well child in the last 1 year

78.1%

**GOAL
45.3%**

**GOAL
70.1%**

83.4%

% of patients ages 3-17 who had a
documented BMI percentile & counseling
on nutrition or a referral for education
in the last 1 year

% of patients ages 3-17 who had a documented
BMI percentile & counseling for physical activity
or a referral for education in the last 1 year

83.4%

**GOAL
66.2%**

**GOAL
65.1%**

59.5%

% patients ages 12 and older who were
screened for depression and if positive, had a
follow-up plan documented since Jan 1st

% of patients ages 15 to 65 will be
screened for HIV at least once

73.7%

**GOAL
55.1%**

**GOAL
54.0%**

2.1%

% of patients who received one or more
screenings for colorectal cancer

CHRONIC DISEASE MANAGEMENT

% of patients ages 18-75
w/DM dx, who had a
HbA1c Test completed
in the last year

12.5%
**GOAL:
88.6%**

% of patients ages 18-75,
w/DM dx, whose HbA1c < 9%
at the time of the last reading
in the last year

12.5%
**GOAL:
38.5%**

% of patients ages 18-75
w/DM who received a
retinal eye exam
in the last 1 year

0.0%
**GOAL:
62.0%**

% of pts ages 18-75 w/DM
who received a foot exam
in the last 1 year

12.5%
**GOAL:
50.3%**

% of patients ages 18-75 w/DM
who received nephropathy
screening or monitoring test
done during the last 1 year

12.5%
**GOAL:
88.0%**

% of patients ages 18-85
w/HTN whose last blood
pressure (BP) is <140/90 in
the last 1 year

58.3%
**GOAL:
55.4%**

% of patients with a diagnosis of CVD
or at risk for CVD, taking a statin
medication to reduce their cholesterol
and risk of heart attack and stroke

N/A
**GOAL:
77.6%**

% of patients with a diagnosis of
(IVD) or a risk of IVD take aspirin or
an antiplatelet medication to lower
their risk of heart attack or stroke

N/A
**GOAL:
81.5%**

PCMH Quality of Care Indicators

IMMUNIZATIONS



% of patients
(turning the age of 2)
who were
fully immunized

22.2%

GOAL: 38.2%

% of patients
(turning the age of 13)
who received Tdap,
HPV, and
meningococcal

38.5%

GOAL: 36.7%

% of patients
(18 and over) who
were immunized
with Tdap vaccine
in the last 10 years

53.3%

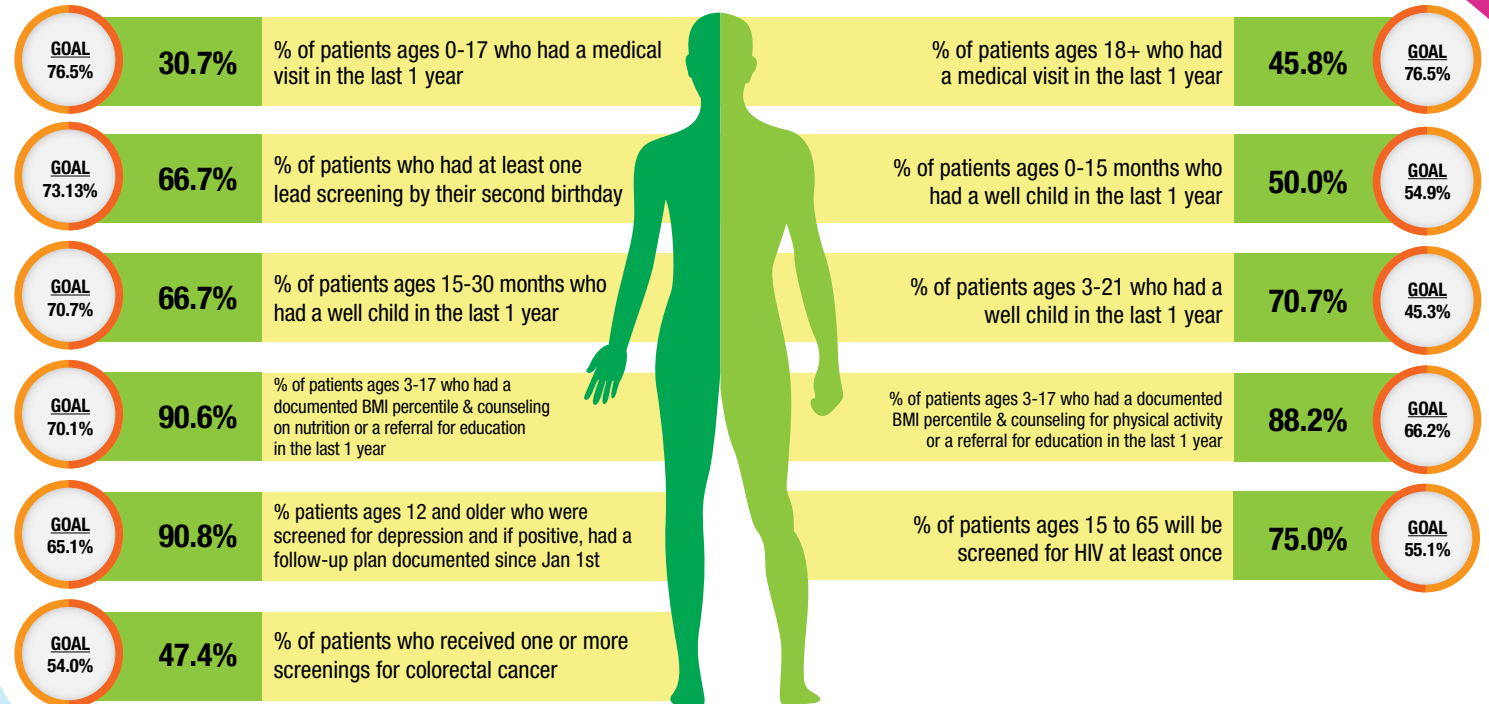
GOAL: 52.6%

% of patients
(18 and over) who
were immunized
with Flu vaccine
each flu season.

20.8%

GOAL: 35.0%

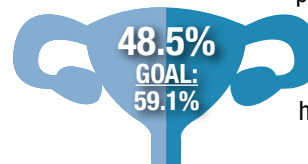
PREVENTATIVE CARE



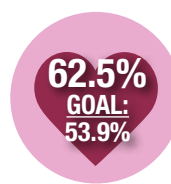
WOMEN'S HEALTH



% of female patients
ages 16-24 who are
sexually active
have a chlamydia
screening every
12 months

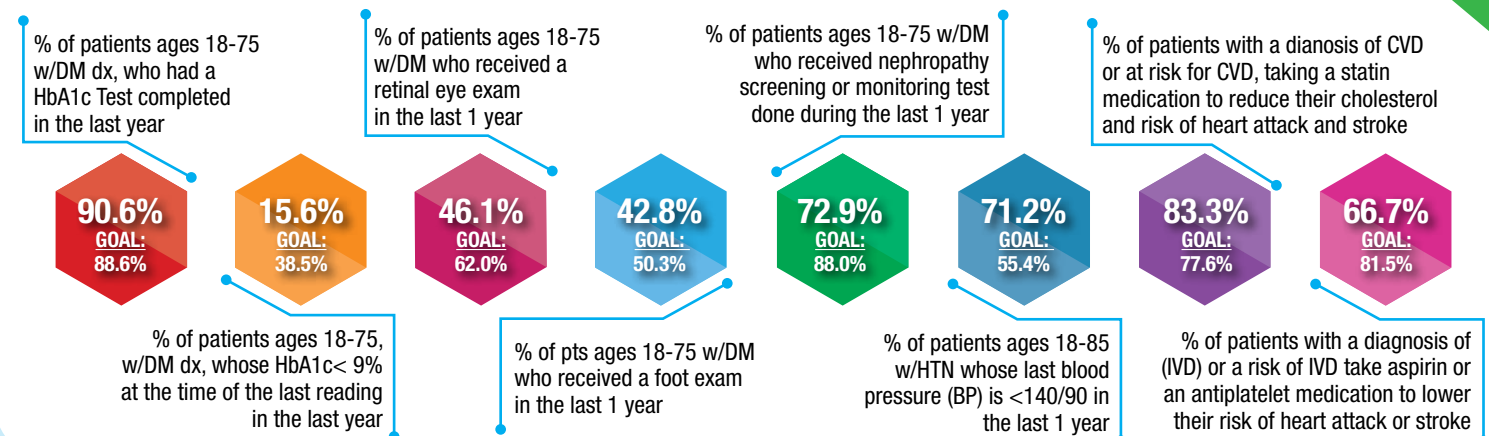


% of female
patients ages 21-64
have a pap test
every 3 years
Ages 30-64
have a pap test with
HPV (co-test)
every 5 years



% of female patients
ages 50-74 have a
mammogram in the
last 2 years

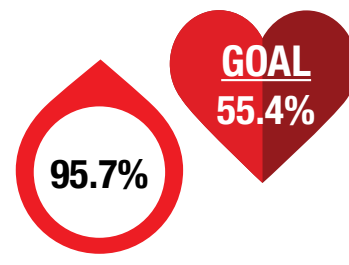
CHRONIC DISEASE MANAGEMENT



VULNERABLE - ELDERLY



% of patients ages 85-120
whose last blood pressure (BP)
is <150/90 in the last 1 year



PCMH Quality of Care Indicators

IMMUNIZATIONS



% of patients
(turning the age of 2)
who were
fully immunized

36.7%

GOAL: 38.2%

% of patients
(turning the age of 13)
who received Tdap,
HPV, and
meningococcal

47.5%

GOAL: 36.7%

% of patients
(18 and over) who
were immunized
with Tdap vaccine
in the last 10 years

79.0%

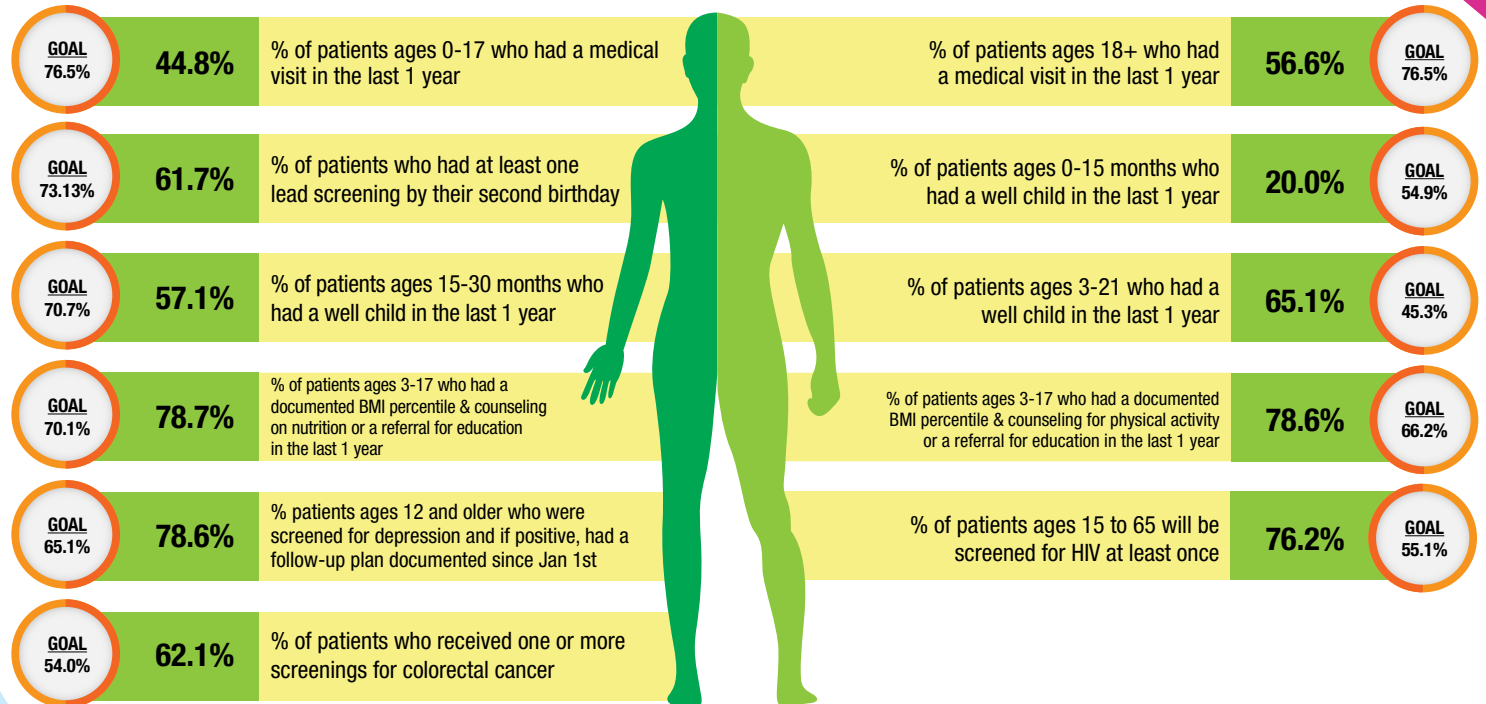
GOAL: 52.6%

% of patients
(18 and over) who
were immunized
with Flu vaccine
each flu season.

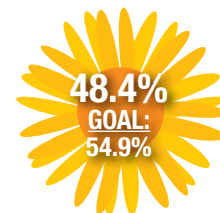
46.8%

GOAL: 35.0%

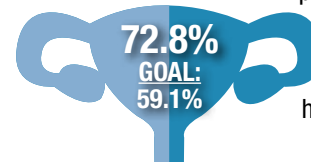
PREVENTATIVE CARE



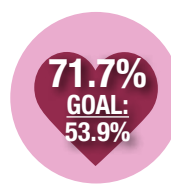
WOMEN'S HEALTH



% of female patients
ages 16-24 who are
sexually active
have a chlamydia
screening every
12 months

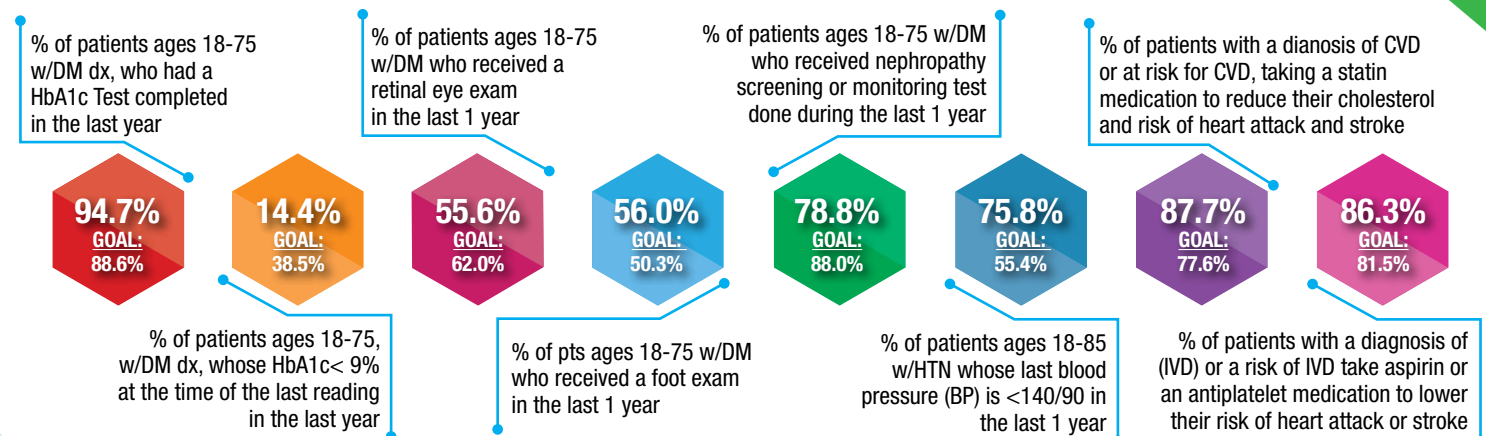


% of female
patients ages 21-64
have a pap test
every 3 years
Ages 30-64
have a pap test with
HPV (co-test)
every 5 years



% of female patients
ages 50-74 have a
mammogram in the
last 2 years

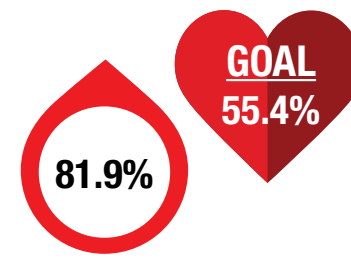
CHRONIC DISEASE MANAGEMENT



VULNERABLE - ELDERLY



% of patients ages 85-120
whose last blood pressure (BP)
is <150/90 in the last 1 year



PCMH Quality of Care Indicators

IMMUNIZATIONS



% of patients
(turning the age of 2)
who were
fully immunized

40.0%

GOAL: 38.2%

% of patients
(turning the age of 13)
who received Tdap,
HPV, and
meningococcal

36.5%

GOAL: 36.7%

% of patients
(18 and over) who
were immunized
with Tdap vaccine
in the last 10 years

67.6%

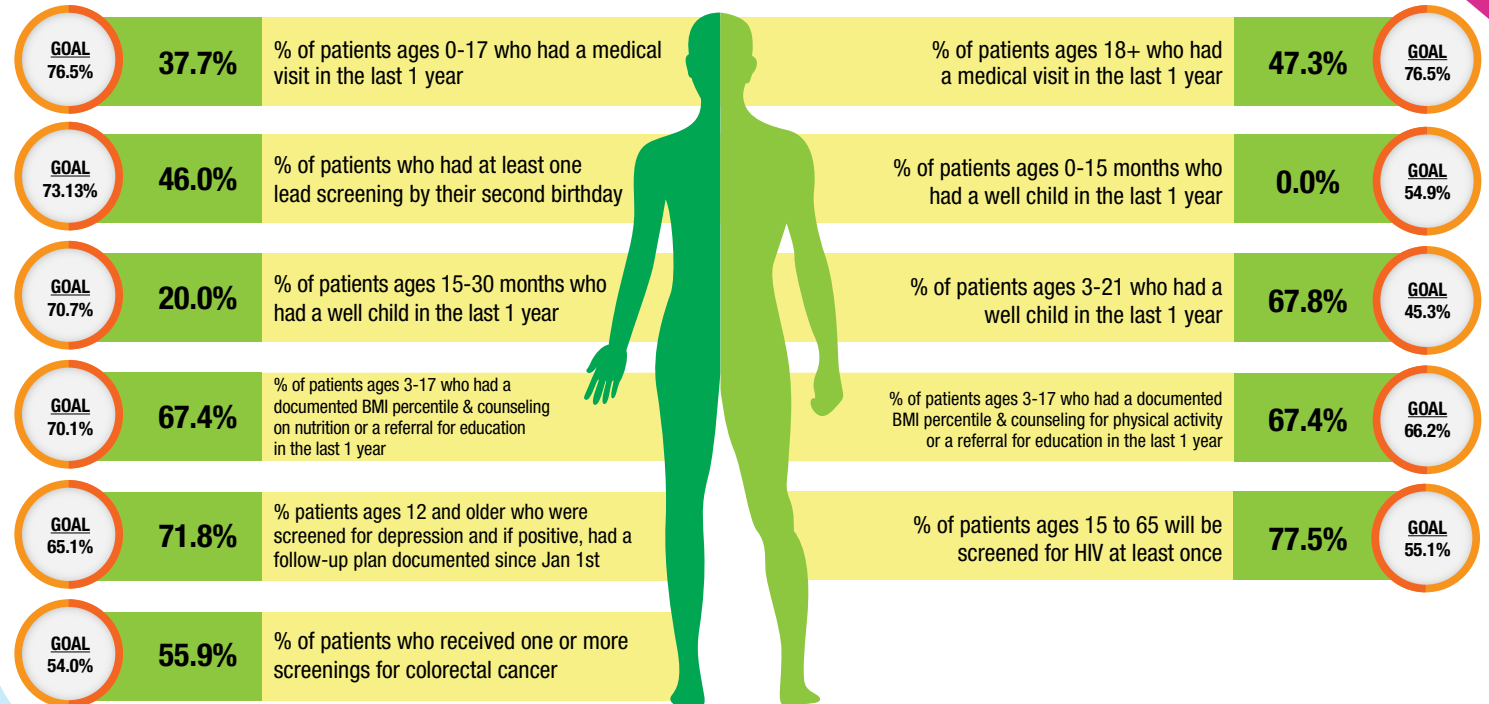
GOAL: 52.6%

% of patients
(18 and over) who
were immunized
with Flu vaccine
each flu season.

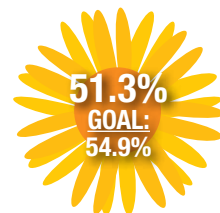
34.2%

GOAL: 35.0%

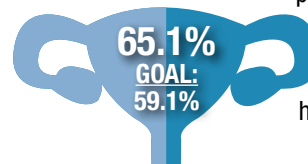
PREVENTATIVE CARE



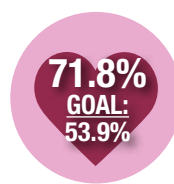
WOMEN'S HEALTH



% of female patients
ages 16-24 who are
sexually active
have a chlamydia
screening every
12 months

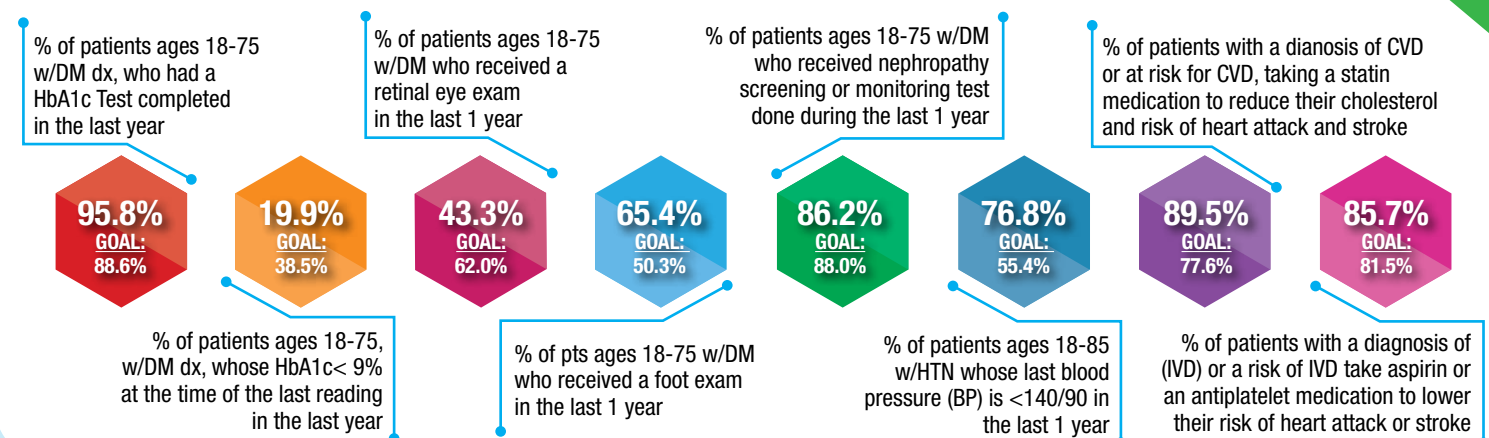


% of female
patients ages 21-64
have a pap test
every 3 years
Ages 30-64
have a pap test with
HPV (co-test)
every 5 years



% of female patients
ages 50-74 have a
mammogram in the
last 2 years

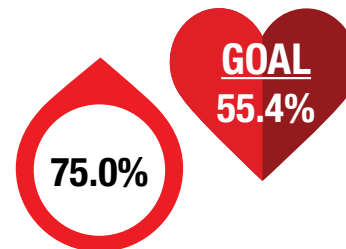
CHRONIC DISEASE MANAGEMENT



VULNERABLE - ELDERLY



% of patients ages 85-120
whose last blood pressure (BP)
is <150/90 in the last 1 year



PCMH Quality of Care Indicators

IMMUNIZATIONS



% of patients
(turning the age of 2)
who were
fully immunized

33.3%

GOAL: 38.2%

% of patients
(turning the age of 13)
who received Tdap,
HPV, and
meningococcal

37.9%

GOAL: 36.7%

% of patients
(18 and over) who
were immunized
with Tdap vaccine
in the last 10 years

66.5%

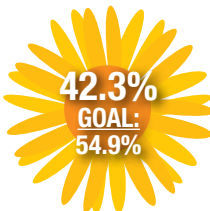
GOAL: 52.6%

% of patients
(18 and over) who
were immunized
with Flu vaccine
each flu season.

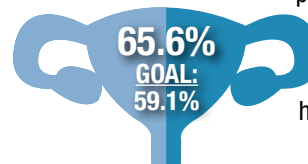
32.3%

GOAL: 35.0%

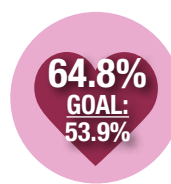
WOMEN'S HEALTH



% of female patients
ages 16-24 who are
sexually active
have a chlamydia
screening every
12 months



% of female
patients ages 21-64
have a pap test
every 3 years
Ages 30-64
have a pap test with
HPV (co-test)
every 5 years



% of female patients
ages 50-74 have a
mammogram in the
last 2 years

VULNERABLE - ELDERLY



% of patients ages 85-120
whose last blood pressure (BP)
is <150/90 in the last 1 year

69.8%

**GOAL
55.4%**

PREVENTATIVE CARE

GOAL
76.5%

38.5%

% of patients ages 0-17 who had a medical
visit in the last 1 year

% of patients ages 18+ who had
a medical visit in the last 1 year

54.0%

GOAL
76.5%

GOAL
73.13%

73.8%

% of patients who had at least one
lead screening by their second birthday

% of patients ages 0-15 months who
had a well child in the last 1 year

0.0%

GOAL
54.9%

GOAL
70.7%

22.2%

% of patients ages 15-30 months who
had a well child in the last 1 year

% of patients ages 3-21 who had a
well child in the last 1 year

70.1%

GOAL
45.3%

GOAL
70.1%

77.8%

% of patients ages 3-17 who had a
documented BMI percentile & counseling
on nutrition or a referral for education
in the last 1 year

% of patients ages 3-17 who had a documented
BMI percentile & counseling for physical activity
or a referral for education in the last 1 year

77.2%

GOAL
66.2%

GOAL
65.1%

68.9%

% patients ages 12 and older who were
screened for depression and if positive, had a
follow-up plan documented since Jan 1st

% of patients ages 15 to 65 will be
screened for HIV at least once

75.0%

GOAL
55.1%

GOAL
54.0%

50.5%

% of patients who received one or more
screenings for colorectal cancer

CHRONIC DISEASE MANAGEMENT

% of patients ages 18-75
w/DM dx, who had a
HbA1c Test completed
in the last year

93.4%

GOAL:
88.6%

% of patients ages 18-75
w/DM who received a
retinal eye exam
in the last 1 year

23.1%

GOAL:
38.5%

% of patients ages 18-75,
w/DM dx, whose HbA1c < 9%
at the time of the last reading
in the last year

40.3%

GOAL:
62.0%

% of patients ages 18-75 w/DM
who received nephropathy
screening or monitoring test
done during the last 1 year

61.7%

GOAL:
50.3%

% of pts ages 18-75 w/DM
who received a foot exam
in the last 1 year

70.6%

GOAL:
88.0%

% of patients with a diagnosis of CVD
or at risk for CVD, taking a statin
medication to reduce their cholesterol
and risk of heart attack and stroke

72.8%

GOAL:
55.4%

% of patients ages 18-85
w/HTN whose last blood
pressure (BP) is <140/90 in
the last 1 year

78.9%

GOAL:
77.6%

% of patients with a diagnosis of
(IVD) or a risk of IVD take aspirin or
an antiplatelet medication to lower
their risk of heart attack or stroke

85.6%

GOAL:
81.5%

PCMH Quality of Care Indicators

IMMUNIZATIONS



% of patients
(turning the age of 2)
who were
fully immunized

46.9%

GOAL: 38.2%

% of patients
(turning the age of 13)
who received Tdap,
HPV, and
meningococcal

50.0%

GOAL: 36.7%

% of patients
(18 and over) who
were immunized
with Tdap vaccine
in the last 10 years

69.7%

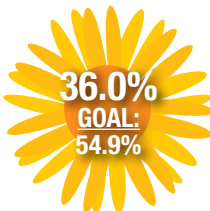
GOAL: 52.6%

% of patients
(18 and over) who
were immunized
with Flu vaccine
each flu season.

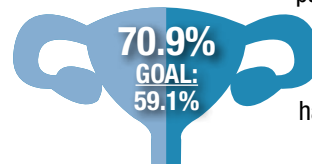
34.9%

GOAL: 35.0%

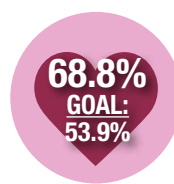
WOMEN'S HEALTH



% of female patients
ages 16-24 who are
sexually active
have a chlamydia
screening every
12 months



% of female
patients ages 21-64
have a pap test
every 3 years
Ages 30-64
have a pap test with
HPV (co-test)
every 5 years



% of female patients
ages 50-74 have a
mammogram in the
last 2 years

VULNERABLE - ELDERLY



% of patients ages 85-120
whose last blood pressure (BP)
is <150/90 in the last 1 year

74.0%

**GOAL
55.4%**

PREVENTATIVE CARE

**GOAL
76.5%**

43.3%

% of patients ages 0-17 who had a medical
visit in the last 1 year

% of patients ages 18+ who had
a medical visit in the last 1 year

49.8%

**GOAL
76.5%**

**GOAL
73.13%**

90.6%

% of patients who had at least one
lead screening by their second birthday

% of patients ages 0-15 months who
had a well child in the last 1 year

75.0%

**GOAL
54.9%**

**GOAL
70.7%**

60.0%

% of patients ages 15-30 months who
had a well child in the last 1 year

% of patients ages 3-21 who had a
well child in the last 1 year

74.1%

**GOAL
45.3%**

**GOAL
70.1%**

84.6%

% of patients ages 3-17 who had a
documented BMI percentile & counseling
on nutrition or a referral for education
in the last 1 year

% of patients ages 3-17 who had a documented
BMI percentile & counseling for physical activity
or a referral for education in the last 1 year

83.6%

**GOAL
66.2%**

**GOAL
65.1%**

77.0%

% patients ages 12 and older who were
screened for depression and if positive, had a
follow-up plan documented since Jan 1st

% of patients ages 15 to 65 will be
screened for HIV at least once

71.1%

**GOAL
55.1%**

**GOAL
54.0%**

59.6%

% of patients who received one or more
screenings for colorectal cancer

CHRONIC DISEASE MANAGEMENT

% of patients ages 18-75
w/DM dx, who had a
HbA1c Test completed
in the last year

95.5%

**GOAL:
88.6%**

% of patients ages 18-75
w/DM who received a
retinal eye exam
in the last 1 year

17.7%

**GOAL:
38.5%**

% of patients ages 18-75 w/DM
who received nephropathy
screening or monitoring test
done during the last 1 year

44.3%

**GOAL:
62.0%**

% of patients ages 18-75 w/DM
who received a foot exam
in the last 1 year

61.2%

**GOAL:
50.3%**

% of patients ages 18-85
w/HTN whose last blood
pressure (BP) is <140/90 in
the last 1 year

86.4%

**GOAL:
88.0%**

% of patients with a diagnosis of CVD
or at risk for CVD, taking a statin
medication to reduce their cholesterol
and risk of heart attack and stroke

73.3%

**GOAL:
55.4%**

% of patients with a diagnosis of CVD
or at risk for CVD, taking aspirin or
an antiplatelet medication to lower
their risk of heart attack or stroke

87.9%

**GOAL:
77.6%**

% of patients with a diagnosis of CVD
or at risk for CVD, taking aspirin or
an antiplatelet medication to lower
their risk of heart attack or stroke

90.6%

**GOAL:
81.5%**

PCMH Quality of Care Indicators

IMMUNIZATIONS



% of patients
(18 and over) who
were immunized
with Tdap vaccine
in the last 10 years

74.8%

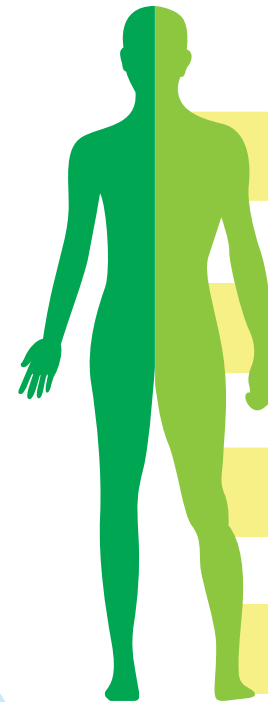
GOAL: 52.6%

% of patients
(18 and over) who
were immunized
with Flu vaccine
each flu season.

55.1%

GOAL: 35.0%

PREVENTATIVE CARE



% of patients ages 18+ who had a medical visit in the last 1 year

73.2%

**GOAL
76.5%**

% patients ages 12 and older who were screened for depression
and if positive, had a follow-up plan documented since Jan 1st

88.6%

**GOAL
65.1%**

% of patients ages 15 to 65 will be screened for HIV at least once

60.0%

**GOAL
55.1%**

% of patients who received one or more screenings for colorectal cancer

66.4%

**GOAL
54.0%**

CHRONIC DISEASE MANAGEMENT

% of patients ages 18-75
w/DM dx, who had a
HbA1c Test completed
in the last year

93.2%

**GOAL:
88.6%**

% of patients ages 18-75
w/DM who received a
retinal eye exam
in the last 1 year

12.4%

**GOAL:
38.5%**

% of patients ages 18-75 w/DM
who received nephropathy
screening or monitoring test
done during the last 1 year

54.9%

**GOAL:
62.0%**

65.9%

**GOAL:
50.3%**

83.1%

**GOAL:
88.0%**

% of patients with a diagnosis of CVD
or at risk for CVD, taking a statin
medication to reduce their cholesterol
and risk of heart attack and stroke

64.2%

**GOAL:
55.4%**

92.7%

**GOAL:
77.6%**

91.3%

**GOAL:
81.5%**

% of patients ages 18-75,
w/DM dx, whose HbA1c < 9%
at the time of the last reading
in the last year

% of pts ages 18-75 w/DM
who received a foot exam
in the last 1 year

% of patients ages 18-85
w/HTN whose last blood
pressure (BP) is <140/90 in
the last 1 year

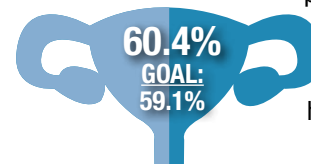
% of patients with a diagnosis of
(IVD) or a risk of IVD take aspirin or
an antiplatelet medication to lower
their risk of heart attack or stroke

WOMEN'S HEALTH



N/A
**GOAL:
54.9%**

% of female patients
ages 16-24 who are
sexually active
have a chlamydia
screening every
12 months



60.4%
**GOAL:
59.1%**

% of female
patients ages 21-64
have a pap test
every 3 years
Ages 30-64
have a pap test with
HPV (co-test)
every 5 years

65.1%
**GOAL:
53.9%**

% of female patients
ages 50-74 have a
mammogram in the
last 2 years

VULNERABLE - ELDERLY



% of patients ages 85-120
whose last blood pressure (BP)
is <150/90 in the last 1 year

69.8%

**GOAL
55.4%**

PCMH Quality of Care Indicators

IMMUNIZATIONS



% of patients
(turning the age of 2)
who were
fully immunized

0.0%

GOAL: 38.2%

% of patients
(turning the age of 13)
who received Tdap,
HPV, and
meningococcal

29.4%

GOAL: 36.7%

% of patients
(18 and over) who
were immunized
with Tdap vaccine
in the last 10 years

56.7%

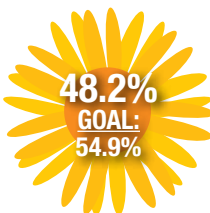
GOAL: 52.6%

% of patients
(18 and over) who
were immunized
with Flu vaccine
each flu season.

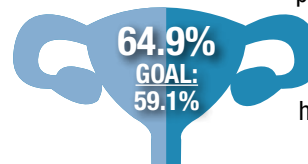
19.0%

GOAL: 35.0%

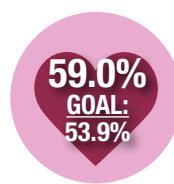
WOMEN'S HEALTH



% of female patients
ages 16-24 who are
sexually active
have a chlamydia
screening every
12 months



% of female
patients ages 21-64
have a pap test
every 3 years
Ages 30-64
have a pap test with
HPV (co-test)
every 5 years



% of female patients
ages 50-74 have a
mammogram in the
last 2 years

VULNERABLE - ELDERLY



% of patients ages 85-120
whose last blood pressure (BP)
is <150/90 in the last 1 year

84.6%

**GOAL
55.4%**

PREVENTATIVE CARE

**GOAL
76.5%**

33.5%

% of patients ages 0-17 who had a medical
visit in the last 1 year

% of patients ages 18+ who had
a medical visit in the last 1 year

44.0%

**GOAL
76.5%**

**GOAL
73.13%**

75.0%

% of patients who had at least one
lead screening by their second birthday

% of patients ages 0-15 months who
had a well child in the last 1 year

N/A

**GOAL
54.9%**

**GOAL
70.7%**

N/A

% of patients ages 15-30 months who
had a well child in the last 1 year

% of patients ages 3-21 who had a
well child in the last 1 year

62.9%

**GOAL
45.3%**

**GOAL
70.1%**

78.2%

% of patients ages 3-17 who had a
documented BMI percentile & counseling
on nutrition or a referral for education
in the last 1 year

% of patients ages 3-17 who had a documented
BMI percentile & counseling for physical activity
or a referral for education in the last 1 year

79.3%

**GOAL
66.2%**

**GOAL
65.1%**

86.9%

% patients ages 12 and older who were
screened for depression and if positive, had a
follow-up plan documented since Jan 1st

% of patients ages 15 to 65 will be
screened for HIV at least once

72.8%

**GOAL
55.1%**

**GOAL
54.0%**

62.5%

% of patients who received one or more
screenings for colorectal cancer

CHRONIC DISEASE MANAGEMENT

% of patients ages 18-75
w/DM dx, who had a
HbA1c Test completed
in the last year

91.3%

**GOAL:
88.6%**

% of patients ages 18-75
w/DM who received a
retinal eye exam
in the last 1 year

19.9%

**GOAL:
38.5%**

% of patients ages 18-75 w/DM
who received nephropathy
screening or monitoring test
done during the last 1 year

52.4%

**GOAL:
62.0%**

% of patients ages 18-75 w/DM
who received nephropathy
screening or monitoring test
done during the last 1 year

74.3%

**GOAL:
50.3%**

% of patients ages 18-75 w/DM
who received nephropathy
screening or monitoring test
done during the last 1 year

76.1%

**GOAL:
88.0%**

% of patients with a diagnosis of CVD
or at risk for CVD, taking a statin
medication to reduce their cholesterol
and risk of heart attack and stroke

71.6%

**GOAL:
55.4%**

% of patients with a diagnosis of CVD
or at risk for CVD, taking a statin
medication to reduce their cholesterol
and risk of heart attack and stroke

81.3%

**GOAL:
77.6%**

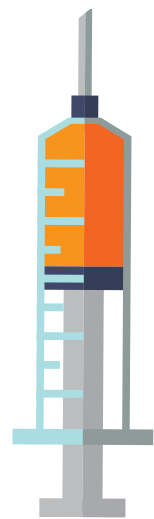
% of patients with a diagnosis of CVD
or at risk for CVD, taking a statin
medication to reduce their cholesterol
and risk of heart attack and stroke

85.7%

**GOAL:
81.5%**

PCMH Quality of Care Indicators

IMMUNIZATIONS



% of patients
(turning the age of 2)
who were
fully immunized

37.2%

GOAL: 38.2%

% of patients
(turning the age of 13)
who received
Tdap, HPV, and
meningococcal

51.5%

GOAL: 36.7%

% of patients
(18 and over)
who were
immunized with
Tdap vaccine in
the last 10 years

90.9%

GOAL: 52.6%

% of patients
(18 and over)
who were
immunized with
Flu vaccine each
flu season.

18.2%

GOAL: 35.0%

PREVENTATIVE CARE



% of patients ages 0-17 who had a medical visit in the last 1 year **49.6%** **GOAL 76.5%**

% of patients ages 18+ who had a medical visit in the last 1 year **25.7%** **GOAL 76.5%**

% of patients who had at least one lead screening by their second birthday **57.2%** **GOAL 50.8%**

% of patients ages 0 -15 months who've had one medical visit during the last 12 months **43.3%** **GOAL 54.9%**

% of patients ages 15-30 months who've had one medical visit during the last 12 months **71.0%** **GOAL 70.7%**

% of patients ages 3-21 who've had one medical visit during the last 12 months **79.0%** **GOAL 45.3%**

% of patients ages 3-17 who had a documented BMI percentile & counseling on nutrition or a referral for education in the last 1 year **83.8%** **GOAL 70.1%**

% of patients ages 3-17 who had a documented BMI percentile & counseling for physical activity or a referral for education in the last 1 year **83.0%** **GOAL 66.2%**

% patients ages 12 and older who were screened for depression and if positive, had a follow-up plan documented since Jan 1st **84.6%** **GOAL 65.1%**

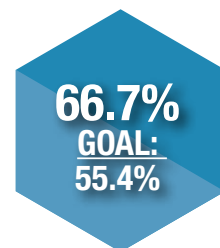
% of patients ages 15 to 65 will be screened for HIV at least once **48.6%** **GOAL 55.08%**

WOMEN'S HEALTH



% of female patients ages 16-24 who are sexually active have a chlamydia screening every 12 months

CHRONIC DISEASE MANAGEMENT



% of patients ages 18-85 w/HTN whose last blood pressure (BP) is <140/90 in the last 1 year

PCMH Quality of Care Indicators

IMMUNIZATIONS



% of patients
(turning the age of 2)
who were
fully immunized

33.3%

GOAL: 38.2%

% of patients
(turning the age of 13)
who received Tdap,
HPV, and
meningococcal

57.1%

GOAL: 36.7%

% of patients
(18 and over) who
were immunized
with Tdap vaccine
in the last 10 years

72.2%

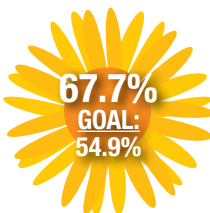
GOAL: 52.6%

% of patients
(18 and over) who
were immunized
with Flu vaccine
each flu season.

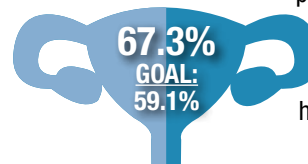
32.1%

GOAL: 35.0%

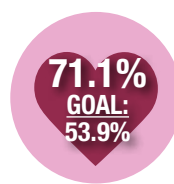
WOMEN'S HEALTH



% of female patients
ages 16-24 who are
sexually active
have a chlamydia
screening every
12 months



% of female
patients ages 21-64
have a pap test
every 3 years
Ages 30-64
have a pap test with
HPV (co-test)
every 5 years



% of female patients
ages 50-74 have a
mammogram in the
last 2 years

VULNERABLE - ELDERLY



% of patients ages 85-120
whose last blood pressure (BP)
is <150/90 in the last 1 year

87.5%

**GOAL
55.4%**

PREVENTATIVE CARE

**GOAL
76.5%**

29.3%

% of patients ages 0-17 who had a medical
visit in the last 1 year

% of patients ages 18+ who had
a medical visit in the last 1 year

46.6%

**GOAL
76.5%**

**GOAL
73.13%**

33.3%

% of patients who had at least one
lead screening by their second birthday

% of patients ages 0-15 months who
had a well child in the last 1 year

0.0%

**GOAL
54.9%**

**GOAL
70.7%**

100%

% of patients ages 15-30 months who
had a well child in the last 1 year

% of patients ages 3-21 who had a
well child in the last 1 year

68.6%

**GOAL
45.3%**

**GOAL
70.1%**

84.9%

% of patients ages 3-17 who had a
documented BMI percentile & counseling
on nutrition or a referral for education
in the last 1 year

% of patients ages 3-17 who had a documented
BMI percentile & counseling for physical activity
or a referral for education in the last 1 year

84.9%

**GOAL
66.2%**

**GOAL
65.1%**

92.5%

% patients ages 12 and older who were
screened for depression and if positive, had a
follow-up plan documented since Jan 1st

% of patients ages 15 to 65 will be
screened for HIV at least once

83.0%

**GOAL
55.1%**

**GOAL
54.0%**

56.8%

% of patients who received one or more
screenings for colorectal cancer

CHRONIC DISEASE MANAGEMENT

% of patients ages 18-75
w/DM dx, who had a
HbA1c Test completed
in the last year

93.5%
**GOAL:
88.6%**

% of patients ages 18-75,
w/DM dx, whose HbA1c < 9%
at the time of the last reading
in the last year

15.0%
**GOAL:
38.5%**

% of patients ages 18-75
w/DM who received a
retinal eye exam
in the last 1 year

45.5%
**GOAL:
62.0%**

73.5%
**GOAL:
50.3%**

% of pts ages 18-75 w/DM
who received a foot exam
in the last 1 year

% of patients ages 18-75 w/DM
who received nephropathy
screening or monitoring test
done during the last 1 year

78.5%
**GOAL:
88.0%**

% of patients ages 18-85
w/HTN whose last blood
pressure (BP) is <140/90 in
the last 1 year

67.2%
**GOAL:
55.4%**

% of patients with a diagnosis of CVD
or at risk for CVD, taking a statin
medication to reduce their cholesterol
and risk of heart attack and stroke

84.2%
**GOAL:
77.6%**

% of patients with a diagnosis of
(IVD) or a risk of IVD take aspirin or
an antiplatelet medication to lower
their risk of heart attack or stroke

82.1%
**GOAL:
81.5%**

PCMH Quality of Care Indicators

IMMUNIZATIONS



% of patients
(turning the age of 2)
who were
fully immunized

26.9%

GOAL: 38.2%

% of patients
(turning the age of 13)
who received Tdap,
HPV, and
meningococcal

40.0%

GOAL: 36.7%

% of patients
(18 and over) who
were immunized
with Tdap vaccine
in the last 10 years

47.3%

GOAL: 52.6%

% of patients
(18 and over) who
were immunized
with Flu vaccine
each flu season.

17.7%

GOAL: 35.0%

PREVENTATIVE CARE



GOAL
76.5%

37.8%

% of patients ages 0-17 who had a medical visit in the last 1 year

% of patients ages 18+ who had a medical visit in the last 1 year

41.5%

GOAL
76.5%

GOAL
73.13%

53.8%

% of patients who had at least one lead screening by their second birthday

% of patients ages 0-15 months who had a well child in the last 1 year

20.0%

GOAL
54.9%

GOAL
70.7%

80.0%

% of patients ages 15-30 months who had a well child in the last 1 year

% of patients ages 3-21 who had a well child in the last 1 year

62.6%

GOAL
45.3%

GOAL
70.1%

88.2%

% of patients ages 3-17 who had a documented BMI percentile & counseling on nutrition or a referral for education in the last 1 year

% of patients ages 3-17 who had a documented BMI percentile & counseling for physical activity or a referral for education in the last 1 year

88.0%

GOAL
66.2%

GOAL
65.1%

72.5%

% patients ages 12 and older who were screened for depression and if positive, had a follow-up plan documented since Jan 1st

% of patients ages 15 to 65 will be screened for HIV at least once

60.2%

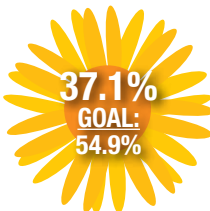
GOAL
55.1%

GOAL
54.0%

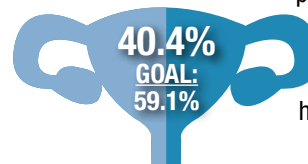
29.4%

% of patients who received one or more screenings for colorectal cancer

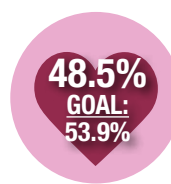
WOMEN'S HEALTH



% of female patients ages 16-24 who are sexually active have a chlamydia screening every 12 months



% of female patients ages 21-64 have a pap test every 3 years
Ages 30-64 have a pap test with HPV (co-test) every 5 years



% of female patients ages 50-74 have a mammogram in the last 2 years

VULNERABLE - ELDERLY



% of patients ages 85-120 whose last blood pressure (BP) is <150/90 in the last 1 year

53.8%

GOAL
55.4%

CHRONIC DISEASE MANAGEMENT

% of patients ages 18-75 w/DM dx, who had a HbA1c Test completed in the last year

88.3%

GOAL:
88.6%

% of patients ages 18-75, w/DM dx, whose HbA1c < 9% at the time of the last reading in the last year

21.1%

GOAL:
38.5%

% of patients ages 18-75 w/DM who received a retinal eye exam in the last 1 year

34.4%

GOAL:
62.0%

% of pts ages 18-75 w/DM who received a foot exam in the last 1 year

29.7%

GOAL:
50.3%

% of patients ages 18-75 w/DM who received nephropathy screening or monitoring test done during the last 1 year

71.4%

GOAL:
88.0%

% of patients ages 18-85 w/HTN whose last blood pressure (BP) is <140/90 in the last 1 year

64.0%

GOAL:
55.4%

% of patients with a diagnosis of CVD or at risk for CVD, taking a statin medication to reduce their cholesterol and risk of heart attack and stroke

66.4%

GOAL:
77.6%

% of patients with a diagnosis of (IVD) or a risk of IVD take aspirin or an antiplatelet medication to lower their risk of heart attack or stroke

81.8%

GOAL:
81.5%

PCMH Quality of Care Indicators

IMMUNIZATIONS



% of patients
(turning the age of 2)
who were
fully immunized

4.0%

GOAL: 38.2%

% of patients
(turning the age of 13)
who received Tdap,
HPV, and
meningococcal

0.0%

GOAL: 36.7%

% of patients
(18 and over) who
were immunized
with Tdap vaccine
in the last 10 years

66.2%

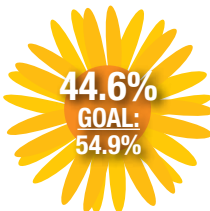
GOAL: 52.6%

% of patients
(18 and over) who
were immunized
with Flu vaccine
each flu season.

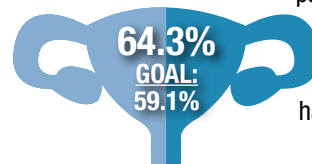
33.8%

GOAL: 35.0%

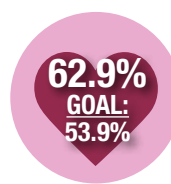
WOMEN'S HEALTH



% of female patients
ages 16-24 who are
sexually active
have a chlamydia
screening every
12 months



% of female
patients ages 21-64
have a pap test
every 3 years
Ages 30-64
have a pap test with
HPV (co-test)
every 5 years



% of female patients
ages 50-74 have a
mammogram in the
last 2 years

VULNERABLE - ELDERLY



% of patients ages 85-120
whose last blood pressure (BP)
is <150/90 in the last 1 year

66.9%

**GOAL
55.4%**

PREVENTATIVE CARE

**GOAL
76.5%**

10.6%

% of patients ages 0-17 who had a medical
visit in the last 1 year

% of patients ages 18+ who had
a medical visit in the last 1 year

54.2%

**GOAL
76.5%**

**GOAL
73.13%**

4.0%

% of patients who had at least one
lead screening by their second birthday

% of patients ages 0-15 months who
had a well child in the last 1 year

0.0%

**GOAL
54.9%**

**GOAL
70.7%**

0.0%

% of patients ages 15-30 months who
had a well child in the last 1 year

% of patients ages 3-21 who had a
well child in the last 1 year

27.6%

**GOAL
45.3%**

**GOAL
70.1%**

12.1%

% of patients ages 3-17 who had a
documented BMI percentile & counseling
on nutrition or a referral for education
in the last 1 year

% of patients ages 3-17 who had a documented
BMI percentile & counseling for physical activity
or a referral for education in the last 1 year

12.6%

**GOAL
66.2%**

**GOAL
65.1%**

76.7%

% patients ages 12 and older who were
screened for depression and if positive, had a
follow-up plan documented since Jan 1st

% of patients ages 15 to 65 will be
screened for HIV at least once

72.4%

**GOAL
55.1%**

**GOAL
54.0%**

58.3%

% of patients who received one or more
screenings for colorectal cancer

CHRONIC DISEASE MANAGEMENT

% of patients ages 18-75
w/DM dx, who had a
HbA1c Test completed
in the last year

92.1%

**GOAL:
88.6%**

% of patients ages 18-75
w/DM who received a
retinal eye exam
in the last 1 year

20.3%

**GOAL:
38.5%**

% of patients ages 18-75 w/DM
who received nephropathy
screening or monitoring test
done during the last 1 year

53.9%

**GOAL:
62.0%**

62.7%

**GOAL:
50.3%**

72.7%

**GOAL:
88.0%**

71.5%

**GOAL:
55.4%**

% of patients with a diagnosis of CVD
or at risk for CVD, taking a statin
medication to reduce their cholesterol
and risk of heart attack and stroke

83.5%

**GOAL:
77.6%**

83.6%

**GOAL:
81.5%**

% of patients ages 18-75,
w/DM dx, whose HbA1c < 9%
at the time of the last reading
in the last year

% of pts ages 18-75 w/DM
who received a foot exam
in the last 1 year

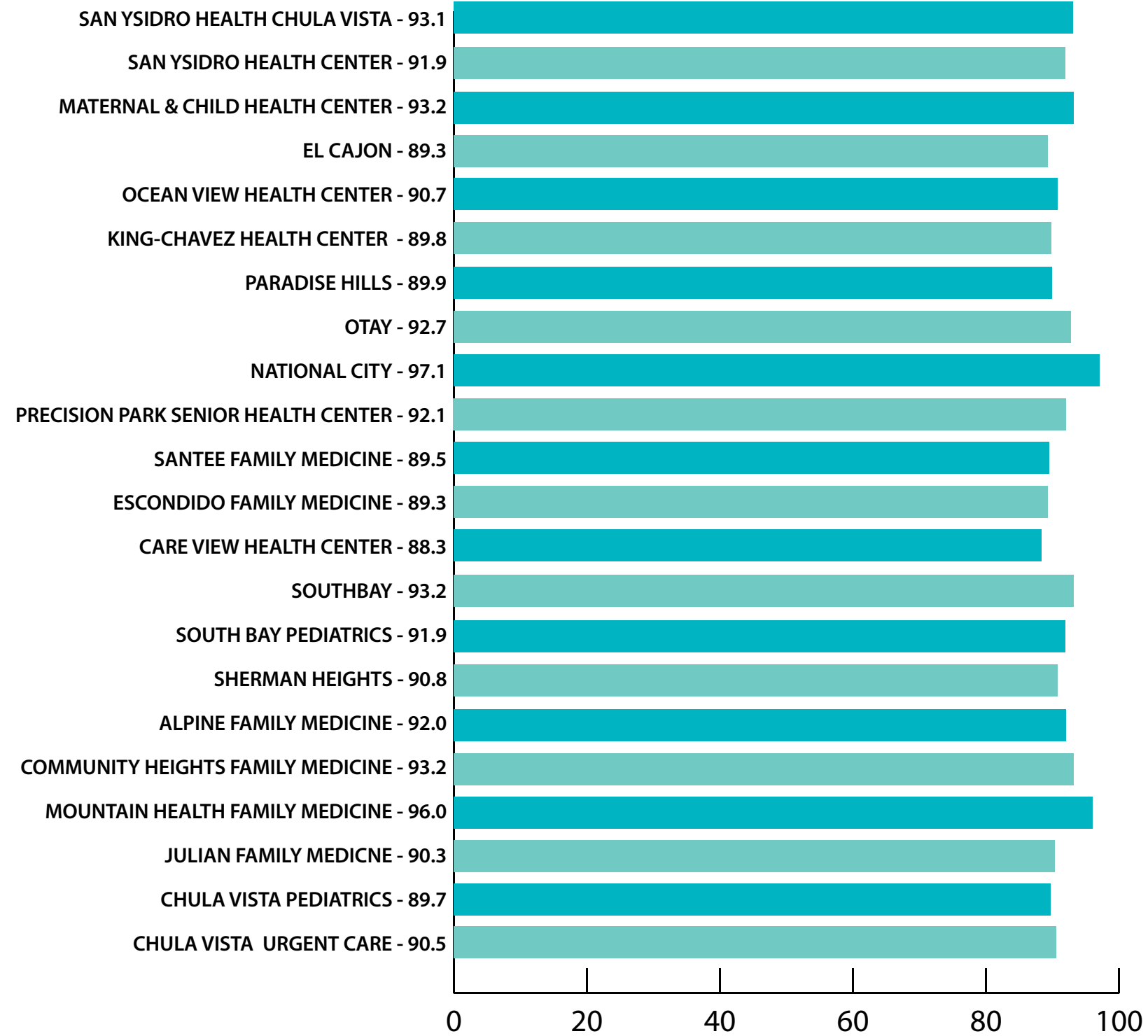
% of patients ages 18-85
w/HTN whose last blood
pressure (BP) is <140/90 in
the last 1 year

% of patients with a diagnosis of
(IVD) or a risk of IVD take aspirin or
an antiplatelet medication to lower
their risk of heart attack or stroke



**SAN YSIDRO
HEALTH**

How satisfied are SAN YSIDRO HEALTH PATIENTS with their HEALTH CARE?



2ND QUARTER 2023