

When you need the highest quality images to see the finest details in your seeds

KUBTEC Cabinet X-ray Systems for Seed Imaging and Analysis

Fully Automatic. Fully Shielded. No Special Training Required.

Measure, annotate, edit, zoom, store, and send images with the DIGICOM® software's simple, yet powerful user interface.

Seed Purification

- X-ray imaging is used by nurseries and seed companies to test seed viability
- Non-destructive testing using X-ray is an effective substitute for traditional destructive germination seed testing such as Tetrazolium chloride (TZ)

Insect Infestation/Contamination

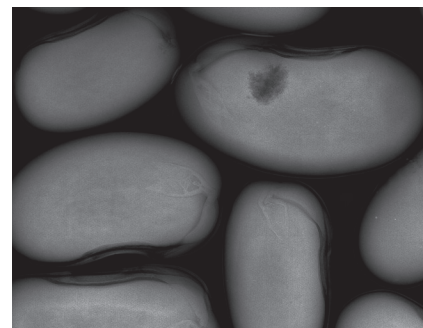
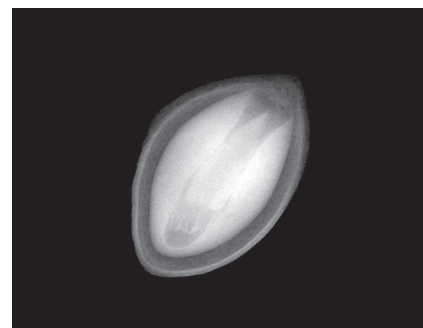
- X-ray imaging can identify the effect of insect infestation on various parts/stages of plants
- Any contamination may prevent germination and stunt seeds disrupting viability

Morphology

- X-ray imaging gives researchers the ability to investigate plant physiology and morphology
- Testing of variable species in unique environments allows for advanced genetic research

X-ray Sterilization

- Seed germination is naturally affected by insects and bacterial growth. This can be improved via non-destructive radiation techniques



KUBTEC Cabinet X-ray Systems for Seed Imaging and Analysis

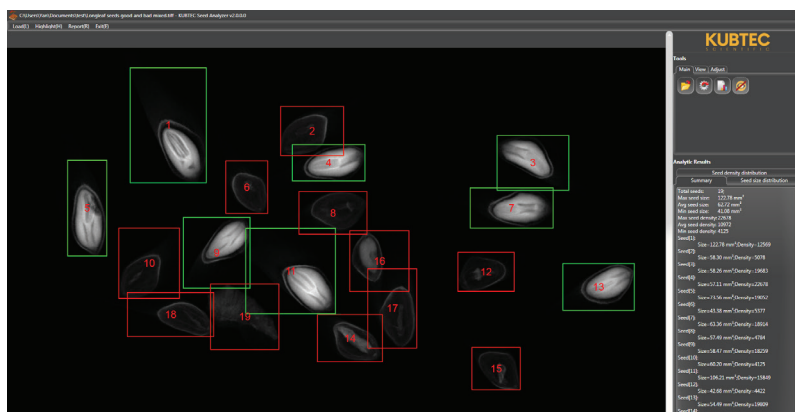
Research, Counting, Density, Infestation, NDT.

Seed Analysis Software

The most versatile package for accurately and automatically counting, categorizing, and measuring seeds, components, artifacts, and other subjects.

Applications Include:

Seed Counting
Seed Inspection
Seed Measuring
Seed Density



Recommended Systems for Seed Applications



XPERT® 80
Cabinet X-ray System



PARAMETER™
Cabinet X-ray System

Energy Range	20-90kV
Detector Size	5" x 6" or 10" x 12"
X-ray Focal Spot	5 µm
Pixel Size	49.5 µm

Energy Range	20-50kV
Detector Size	5" x 6"
X-ray Focal Spot	50 µm
Pixel Size	49.5 µm

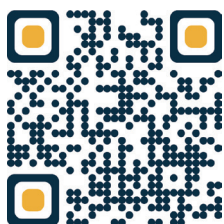
Additional Systems



XPERT 20
Benchtop X-ray System



XCELL® 50
Benchtop X-ray Irradiator



Scan the QR code to visit us online at:
kubtecscientific.com/agriculture

KUBTEC
S C I E N T I F I C

KUBTEC® Systems are used in these organizations:



CHICAGO
BOTANIC
GARDEN

USDA **ARS**
Agricultural Research Service



Specifications subject to change without notice. PARAMETER is a trademark and KUBTEC, the KUBTEC Scientific logo, XPERT, DIGICOM, and XCELL are registered trademarks of KUB Technologies, Inc. M1297A-1021