

THE PROSTHODONTIST MASTER SERIES

# MINI-RESIDENCY IN PROSTHODONTICS

Tony Rotondo and Michael Mandikos



## Rotondo Dental Practice, Brisbane City

### 3x three day modules

**Module 1:** 15-17 September 2022

**Module 2:** 20-22 October 2022

**Module 3:** 24 - 26 November 2022

*"I cannot speak highly enough about the Mini Residency in Prosthodontics. Every aspect of all three Modules of the program has either improved the quality of my day to day practice, or given me a proper understanding of basic and complex principles, that were brushed over at University or other CPD programs. I now feel confident taking on full mouth rehabilitation cases and would strongly recommend this program to anyone looking to improve their skillset. I just wish I'd done it sooner."* **Jack Brazel, Class of 2018**

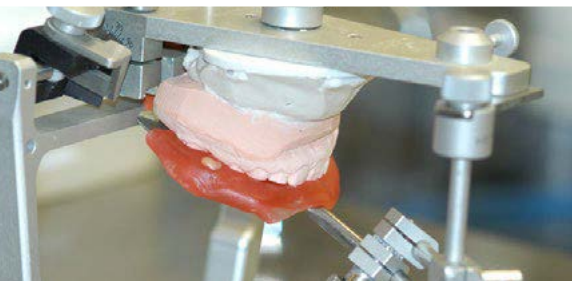
**A practical program designed for the general dentist including didactic and hands-on components:**

- Diagnosis and treatment planning.
- Articulators, occlusal schemes, and concepts.
- Jaw registrations, diagnostic wax-ups, and provisional restorations.
- Sequencing of cases and multidisciplinary treatment.
- The use of splints.
- Literature reviews, and presentations from guest speakers.
- All we can teach you short of enrolling in a three year graduate program!



For more information please contact [info@ceodental.com.au](mailto:info@ceodental.com.au) or visit our website [www.ceodental.com.au](http://www.ceodental.com.au)

The only short course program on complex restorative dentistry in Australia designed to help you take a full-arch case from start to finish. (60 CPD points). CeoDental Seminars' courses are compliant with current DBA Guidelines on continuing professional development.



# MINI-RESIDENCY IN PROSTHODONTICS

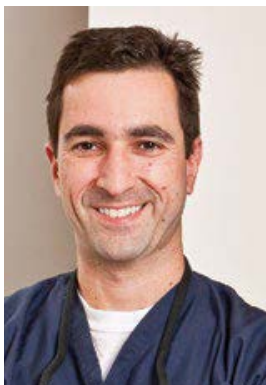
Tony Rotondo and Michael Mandikos

GET IN QUICK!  
THIS COURSE  
SELLS OUT  
EACH YEAR

Tony Rotondo and Michael Mandikos are pleased to announce that we will be again staging the Mini-Residency in Prosthodontics in 2022. Our program is now in its sixteenth year and the feedback from our attendees (all of whom have now become good friends) has been excellent. We can really cram a lot of material into 9 days of combined theory, practical, and of course some light hearted humour and entertainment!

The program this year again consists of 3 modules, each of three days duration (Thursday, Friday, Saturday). Each module will cover in suitable depth, the relevant theory and practical stages involved in performing complex restorative cases. There will be an amount of pre-course reading and essential literature reviews, to ensure participants are well schooled in the current clinical and materials research in this area of dentistry before we discuss these in depth during the course.

Participants will gain the most from this program if they have a case suitable for rehabilitation (or other significant treatment) prior to commencing the Mini-Residency or can locate one soon after completing Module 1, though this is not a requirement for registration. Each of the modules will prepare the participants sufficiently to return to their practices and commence the relevant stages of clinical treatment for their case. Accordingly, after completing the third module of the Mini-Residency, the participants will be able to return to their practices and complete their respective complex restorative cases. Whilst participants are encouraged to have a clinical case selected to treat during this course, it is not essential for everyone attending to have a case.



Michael Mandikos



Tony Rotondo

<b>DATES</b>	Module 1 15-17 September 2022 Module 2 20-22 October 2022 Module 3 24 - 26 November 2022
<b>VENUE</b>	Module 1: The Australian Dental Centre of Excellence Module 2-3: Rotondo Dental Practice, Level 4/106 Edward St, Brisbane City QLD 4000
<b>ATTENDANCE</b>	Limited to 20 (No more than 12 without clinical cases)
<b>COSTS</b>	\$6990 (+GST) for each module, deposit of \$2500 to reserve your position. All three modules must be completed.

Attendees who register for the program agree to register for all three modules as we are unable to take on new attendees part of the way through the program. The course fee for each module will be invoiced approximately 4 weeks before the commencement of the respective module and is payable in advance of that 3-day program. Refunds are not possible due to our inability to accept other registrants part way through the overall program. A deposit payment is required to hold your place on this program.

Registration will be on a first come basis. To register for the Mini Residency please visit [www.ceodental.com.au](http://www.ceodental.com.au). Registration will be confirmed once your deposit is received. This deposit will then be applied to your payment for the final module. The pre-course registration material will then be sent to you. All instruments, materials and notes for most lectures will be provided, and participants are encouraged to bring their own loupes and a big notepad.

We have a program which is unique in Australia. Participants will have the opportunity to learn one on one from Tony and Michael and our guest Orthodontist. Participants will also have special access to the Alumni section of our website which contains copies of the lectures, course notes, instrument and materials lists, past and current Literature.

All our course alumnists retain ongoing access to this special resource.