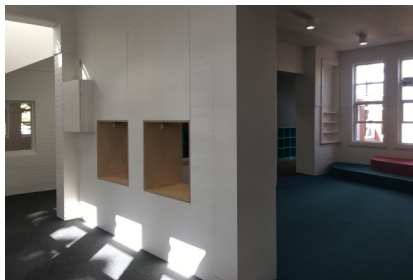
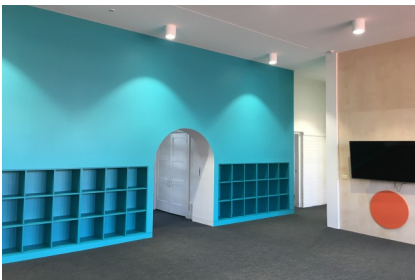


PROJECT PROFILE

Drouin Early Learning Centre Expansion



CLIENT

> Dept. of Education and Training

LOCATION

> Frankston, Victoria

ARCHITECT / DESIGNER

> Chaulk

VALUE

> \$1.20m

SUMMARY

> This refurbishment project included classroom spaces, break-out spaces and an amphitheater for the lower primary school grades. Works encompassed an arched/curved birch ply room divider, recessed shelving details, a wet area and pigeon holes. The curved and stepped levels in the amphitheater provide an assembly and presentation area for the children. The coloured panels on the walls were clad with pin board materials (Autex) to provide acoustic benefits and a place for mounting artwork and notices. Delivered on time and within budget.

CONSTRUCTION HIGHLIGHTS AND TECHNIQUES

- > Curved birch ply joinery
- > Autex acoustic pin board cladding

